



INSTITUTIONAL EFFECTIVENESS PRESENTS:



CONVERSATIONS
ABOUT WINTHROP DATA

**PARTING IS SUCH SWEET SORROW:
2025 GRADUATING SENIOR SURVEY RESULTS**

SEPTEMBER 24, 2025

www.winthrop.edu/ie/ssp



Department of IE Staff



Dr. Noreen Gaubatz – Assistant Provost for Institutional Effectiveness & SACSCOC Liaison



Dr. KB Gwebu – Director of Assessment



Dr. Zach Abernathy – Educational Data Scientist & Professor of Math



Maria Linn – Director of Institutional Research



Kelly Scott – Senior Data Analyst



Nancy Scurry – Budget, Personnel, & Business Analyst





Agenda

- Introduction to the Student Success Partners Series
- Graduating Senior Survey
- Table Conversations – Survey Data
- Large Group Conversations
- Wrap-up
- Next Session





Student Success Partners: Conversations about Winthrop Data

- Data Transparency
- Student Success
- Conversations
- Partners





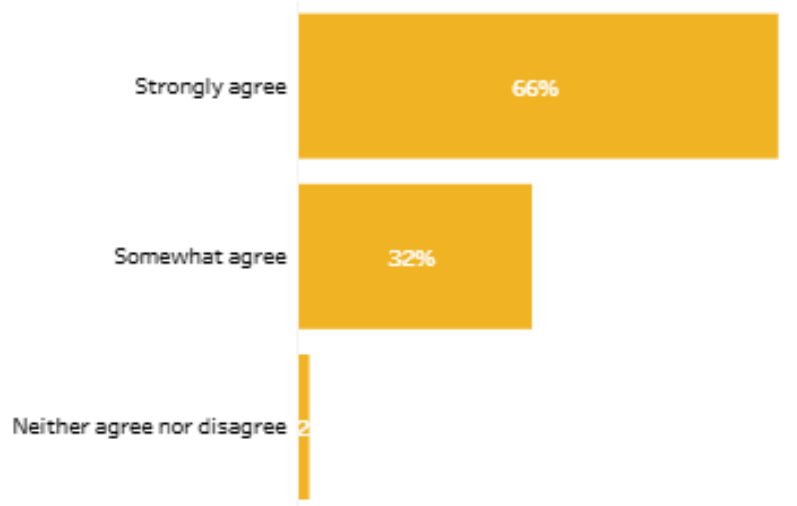
2024-25 SSP Recap

Kelly Scott, Senior Data Analyst

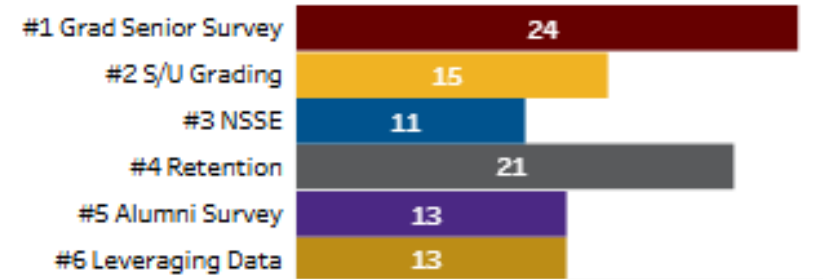


SSP Evaluation Dashboard

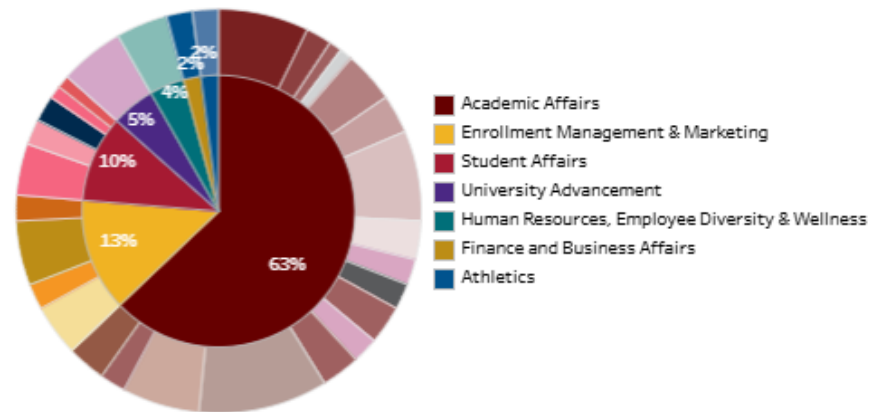
Question: The data presented and discussions held today will be helpful to me in my work.



Attendance by Session



Attendance by Division and Department





2025-26 SSP Changes

Maria Linn, Director of Institutional Research





2025-26 SSP Changes

- Collaborations with colleagues from other departments
- Topics informed by suggestions on evaluation forms
- "Though this be madness, yet there is method in't."
(Shakespearean session titles)
- Contest and door prizes





Contest Results

Nancy Scurry, Budget, Personnel, & Business Analyst



Quiz Answers




**PULLING BACK THE CURTAIN
ON OUR 2025-26
Student Success Partners
SERIES**

Join us for data-sharing sessions
designed to enhance student
success at Winthrop!

CAN YOU GUESS the topic of the sessions based on these
clever Shakespearean-themed titles?

The first submission with the most correct responses will
win a special prize to be awarded at the first SSP session
on September 24th.

The deadline for submissions is Friday, September 5, 2025.

Click

ENTER NOW

or

Scan



- 1** Parting is Such Sweet Sorrow
- 2** Something Wicked This Way Comes
- 3** Who Was Enroll'd 'Mongst Wonders
- 4** To Stay or Not to Stay, That is the Question
- 5** We Know What We Are, But Know Not What We May Be
- 6** Life's Uncertain Voyage

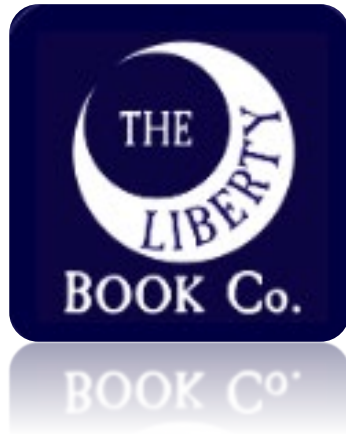


Hosted by the Department of Institutional Effectiveness



OUR 2025-26 STUDENT SUCCESS PARTNERS SERIES CONTEST ANSWERS

- 1** Parting is Such Sweet Sorrow: **Graduating Senior Survey (with 2025 data update)**
- 2** Something Wicked This Way Comes: **Using AI to Analyze Data**
- 3** Who Was Enroll'd 'Mongst Wonders: **Student Enrollment (Collaborative session with Dr. Joseph Miller)**
- 4** To Stay or Not to Stay, That is the Question: **Retention Dashboard Debut**
- 5** We Know What We Are, But Know Not What We May Be: **Career Outcomes (Collaborative session with Becky Ross)**
- 6** Life's Uncertain Voyage: **To Be Determined**



And the Winner Is...

Lee Clark



Honorable Mention:

Carol Adams



About the Data

Maria Linn, Director of Institutional Research





What is the Graduating Senior Survey?

- Institution-wide survey to gather recent graduates' feedback on academics, support services, educational experiences, & graduation outcomes
- Consistently administered electronically to all undergraduate degree completers since 2010
- Invitations sent the Monday prior to Commencement
- December administration includes August UG degree completers and seniors who apply to graduate in Dec
- May administration includes seniors who apply to graduate in May
- Confidential, not anonymous





Why do we collect these data?

Instrument has evolved over time as reporting needs have changed. Results have been used for:

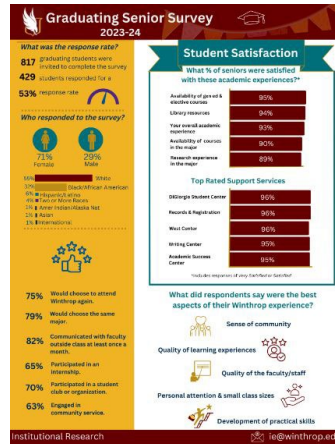
- Performance-based funding metrics
- Key Performance Indicators (KPIs)
- Assessment of University-Level Competencies (ULCs)
- State Accountability Report performance measures & targets
- Continuous Improvement Plans & Reports
- SACSCOC compliance
- Program-level accreditation
- Program reviews
- Career Outcomes Rate (come to our Feb. session for details!)





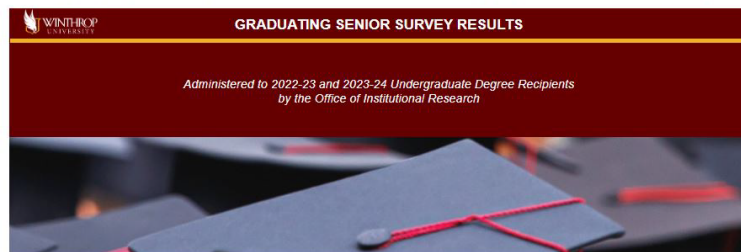
What's available & where?

One-page overview (Public)



Dashboard (F/S only)

Main Menu | Response Rates & Profile | Academic Resources | Support Services | Communication with Faculty &... | Student Organizations | Enriching Experiences



Response Rates & Profile
Academic Resources
Support Services
Communication with Faculty & Hours Worked
Student Organizations
Enriching Experiences & Overall Satisfaction

Archived reports (F/S only)

SharePoint	
IR Winthrop Data (Login Required)	
Home INSTRUCTIONS Documents Back to Institutional Research	
+ New Upload Edit in grid view Share Copy link Sync Add shortcut	
Documents > Institutional Surveys > Graduating Senior Surveys > Reports from Previous Years	
Name	
Archived Reports, 2010-11 through 2017-18	
2018-19 Graduating Senior Survey Report.pdf	
2019-20 Graduating Senior Survey Report.pdf	
2020-21 Graduating Senior Survey Report.pdf	
2021-22 Graduating Senior Survey Report.pdf	
2022-23 Graduating Senior Survey Report.pdf	

Open Ended responses (Deans)

SharePoint	
IR Winthrop Data (Login Required)	
Home INSTRUCTIONS Documents Back to Institutional Research Edit	
+ New Upload Edit in grid view Share Copy link Sync Add shortcut to OneDrive Download Export to Excel	
Documents > Institutional Surveys > Graduating Senior Surveys > Graduating Senior Survey Open Ended Responses - Provost	
Name	
Modified	
File Size	
Senior Survey Open Ended Comments_ALL_2021.22.xlsx	
August 7, 2023	
491 KB	
Senior Survey Open Ended Comments_ALL_2022.23.xlsx	
August 7, 2023	
130 KB	
Senior Survey Open Ended Comments_ALL_2023-24.xlsx	
July 18	
152 KB	



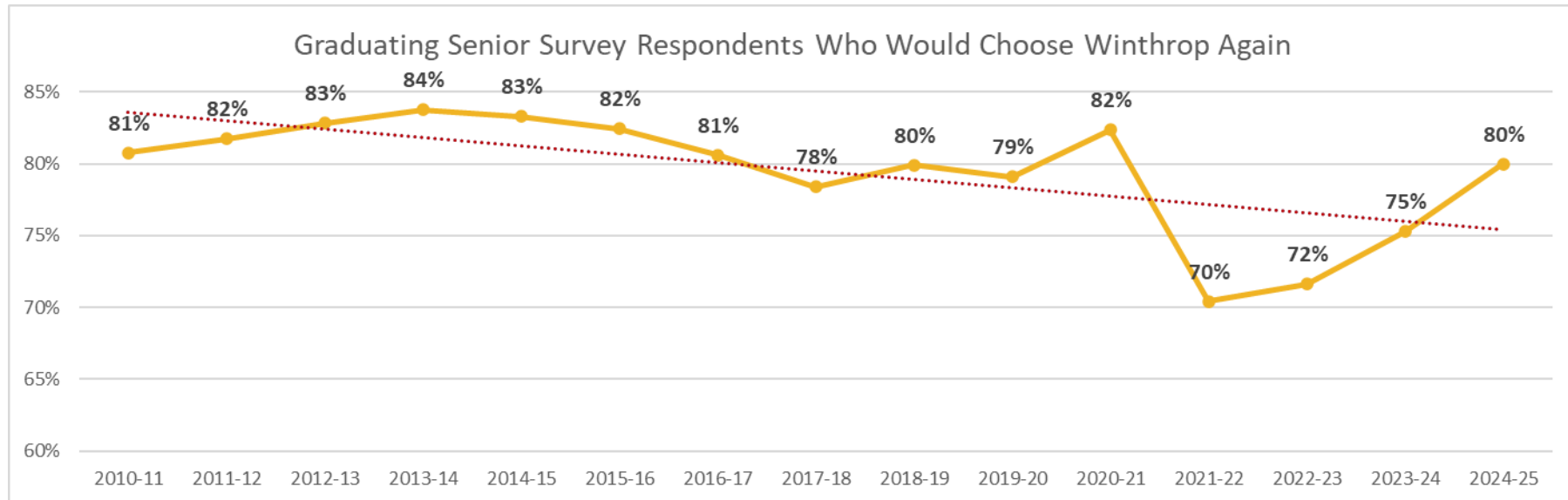
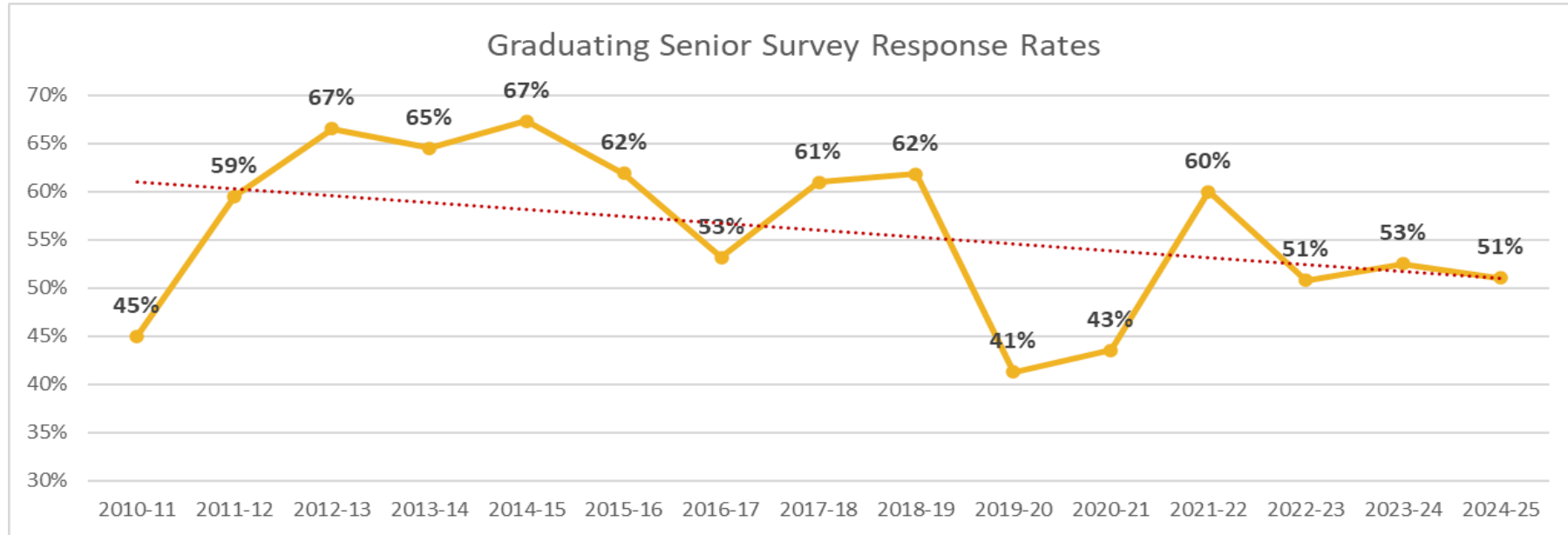


What's new this year?

- Experimented with using AI to summarize qualitative data (come to our Oct. session for details on process!)
- Based on feedback from last year's SSP we:
 - Added "Entered As" filter to the dashboard to view responses for students who entered as freshmen vs. transfers
 - Updated the student organizations listed on the survey instrument



Historical Data Trends



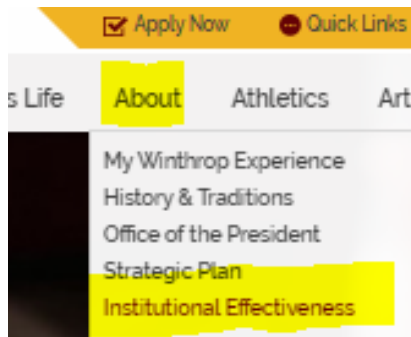


Let's Navigate to the Dashboard

URL: www.winthrop.edu/ie/sharepoint-site

Or click through from www.winthrop.edu:

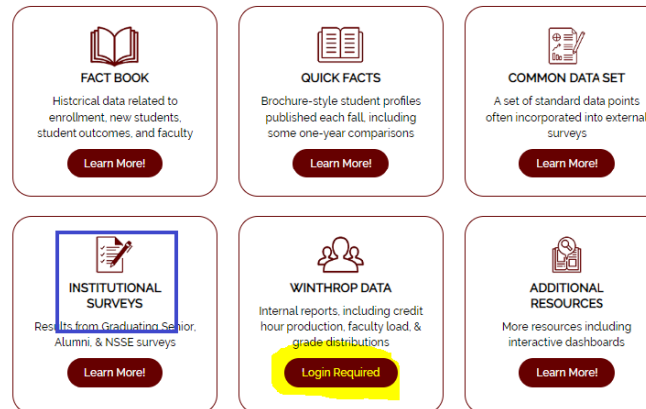
1.



2.



3.



4.

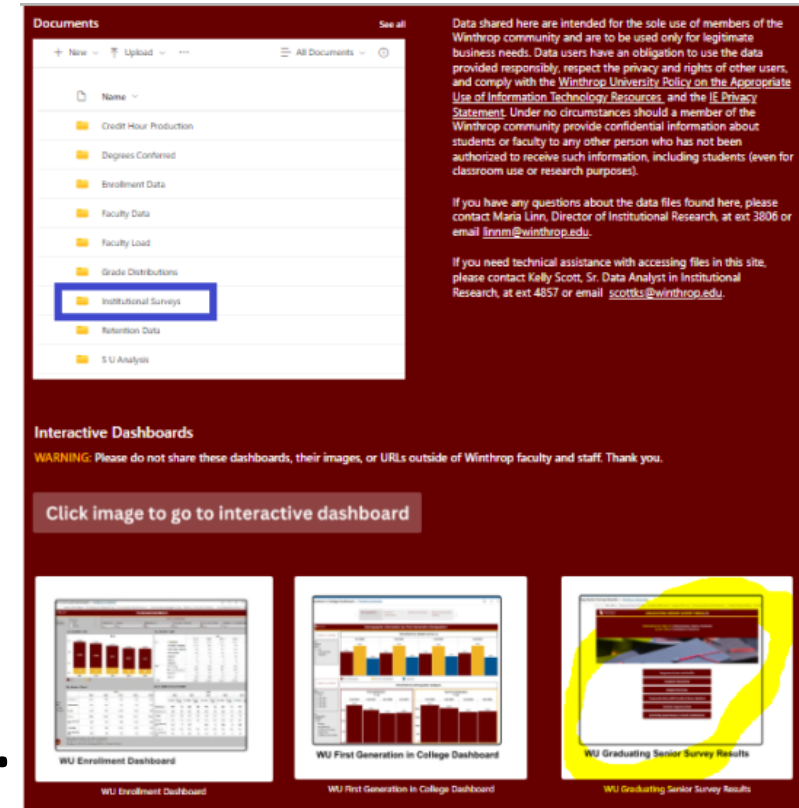
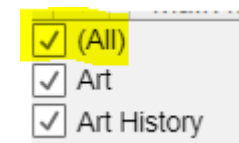




Tableau Tips & Tricks

- Preferred browsers: Microsoft Edge or Google Chrome
- Zoom settings may need to be adjusted (67%) – click refresh after adjusting for best results
- Navigate using gray tabs along the top or buttons on main menu
- When filtering the data, keep in mind that results will be masked for numbers less than 5
- Several options to clear filters:
 - Click the RESET ALL FILTERS button
 - Click the clear filter icon on each filter
 - Choose (All) in each filter's drop-down menu





Guiding Questions

Choose an area of interest and explore and discuss the dashboard and summary of open-ended responses with a partner. Jot down notes to share with the group.

1. What patterns or trends did you notice in the data?
2. Did anything surprise you about the data?
3. How do these results compare to your experiences with students?





Wrap-Up

- **Thank you** for attending! **Coaster** is our departing gift to you.
- Feel free to take the **Graduating Senior handouts** with you for future reference.
- Please, complete an **evaluation form** – on paper or scan the QR code.



PULLING BACK THE CURTAIN
ON OUR NEXT SESSION:

**SOMETHING WICKED THIS WAY COMES:
USING AI TO ANALYZE DATA**

CONVERSATIONS
ABOUT WINTHROP DATA



OCTOBER 28, 2025
2:00 - 3:15 P.M.
DIGS 114

www.winthrop.edu/ie/ssp

STARRING:

