

## Winthrop University Galleries

### EXHIBITIONS & EVENTS

through January 20, 2012

Shift

Winthrop University  
Faculty Exhibition

Eli Arenas, Shaun Cassidy,  
Gerry Derksen, Mark Hamilton,  
Seth Rouser, Tom Stanley, and  
Courtney Starrett  
Elizabeth Dunlap Patrick Gallery  
Rutledge Building

through January 20, 2012

New Work by Paul Martyka,  
Marge Loudon Moody,  
and Phil Moody

Rutledge Gallery / Rutledge Building

through January 20, 2012

BFA & MFA Illustration  
Student Exhibition

Lewandowski Student Gallery  
McLaurin Hall

Thurs. January 19, 2012 - 8 p.m.

WUG Artist Talk:

Phil Moody, Gerry Derksen,  
Mark Lewis, and Ron Parks

Rutledge Gallery / Rutledge Building  
exhibiting New Work Winthrop  
University

Faculty Exhibition in the Rutledge  
Gallery

The work created by these faculty  
members, Fioretti – Little Flower, will  
be installed the evening of Jan. 19 for  
viewing on campus grounds across  
from the Rutledge Gallery  
main entrance.

January 30 - February 10, 2012

2012 South Carolina Schools  
Photography Exhibition  
Lewandowski Student Gallery  
McLaurin Hall

*Opening Reception &  
Awards Ceremony*

*Saturday, February 4, 2012  
2012 South Carolina Schools*

### GALLERY TALKS



*Jessica Reynolds*

*1,6,7*

*mixed media*

*2012*

**M.F.A. Thesis Exhibition**

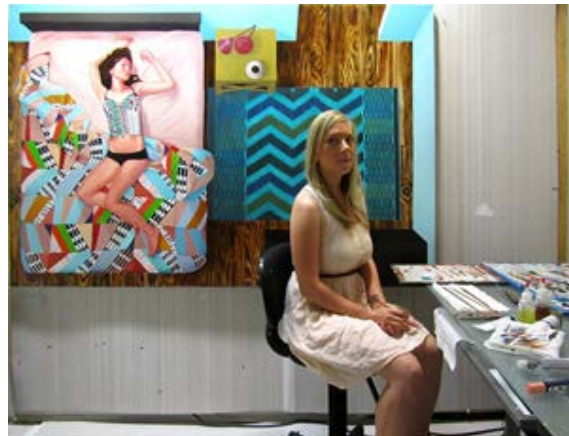
**April 16 - 23, 2012**

---

*What is Big SURS?*

[Big South Undergraduate  
Research Symposium](#)

---



*Undergraduate Juried Exhibition*

*Juror Karen Ann Myers*

---

*Photography Exhibition*  
Lewandowski Student Gallery  
McLaurin Hall / Winthrop University

February 10, 2012  
Opening Reception and  
Awards Ceremony  
6:30 – 8 p.m.  
Rutledge Gallery  
WUG will hold an opening reception  
and awards ceremony to celebrate its  
new exhibitions:  
the 24th Annual Undergraduate  
Juried Exhibition and  
Conjoined Opposites by  
Indrani Nayar-Gall.

Tues. February 28, 2012 - 8 p.m.  
WUG Talk: Indrani Nayar-Gall  
Dina's Place – DiGiorgio Student  
Center  
Unveiling of "Losing Dawn" in the  
main lobby starting at 8 pm prior to  
artist talk  
exhibiting Conjoined Opposites in the  
Elizabeth Dunlap Patrick Gallery  
Rutledge Gallery

February 20 - March 2, 2012  
Foundations Exhibition  
Lewandowski Student Gallery  
McLaurin Hall

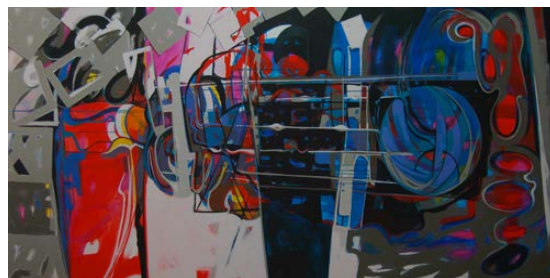
March 12 - 23, 2012  
Sculpture/Drawing Exhibition  
Lewandowski Student Gallery  
McLaurin Hall

February 13 – March 30, 2012  
Conjoined Opposites  
by artist Indrani Nayar-Gall  
Elizabeth Dunlap Patrick Gallery  
Rutledge Building  
[\(more info\)](#)

February 13 – March 30, 2012  
24th Annual Undergraduate J  
Juried Exhibition  
Juror: Karen Ann Myers,  
Assistant Director, Halsey Institute of  
Contemporary Art  
Rutledge Gallery / Rutledge Building

April 2 - 13, 2012  
Big South Undergraduate  
Research Symposium  
(BigSURS)  
Juried Exhibition  
Juror: Virginia Derryberry,  
Chair, Department of Art

Exhibitions, lectures, and receptions  
are open and free to the public.  
Winthrop University Galleries is  
located in the Rutledge Building and  
McLaurin Hall on the campus of  
Winthrop University in  
Rock Hill, South Carolina.



Marge Loudon Moody  
*Chicago Series: 1 Warehouse Finds*  
Acrylic on canvas - 48" x 96" - 2011

**Winthrop University Galleries (WUG)**  
is located in the Rutledge Building  
(1898 Alumni Drive) and  
McLaurin Hall (1896 Alumni Drive) on  
the campus of Winthrop University in  
Rock Hill, South Carolina.  
WUG is funded in part by the  
College of Visual and Performing Arts  
with additional funding from  
Winthrop's Patrons of the Galleries,  
the Elizabeth Dunlap Patrick Endowment, and  
the Edmund D. Lewandowski Endowment.

University of North Carolina - Asheville  
Lewandowski Student Gallery  
McLaurin Hall

April 16 - 23, 2012

Jessica Reynolds:  
M.F.A Thesis Exhibition  
Elizabeth Dunlap Patrick Gallery  
Rutledge Building

Thurs. April 19, 2012 - 8 p.m.

WUG Artist Talk: Jessica Reynolds  
Elizabeth Dunlap Patrick Gallery

April 20, 2012

Opening Reception  
6:30 – 8 p.m.

Rutledge and Patrick Galleries  
Rutledge Building  
B.F.A. Senior Exhibition and  
M.F.A. Thesis Exhibition

April 16 – May 4, 2012

*B.F.A Senior Undergraduate Exhibition*  
Rutledge Gallery / Rutledge Building

April 23 - May 4, 2012

*Senior Interior Design Exhibition*  
Lewandowski Student Gallery  
McLaurin Hall

Thurs. April 26, 2012 - 8 p.m.

WUG Artist Talk: Stephen Lursen  
Rutledge 119 / Rutledge Building

April 26 – May 4, 2012

Stephen Lursen:  
*M.F.A Thesis Exhibition*  
Elizabeth Dunlap Patrick Gallery  
Rutledge Building

- - -

*The Obstacle I*  
Stephen Lursen

Mixed Media  
2011

[Video](#)

May 4, 2012

*MFA Thesis Closing Reception*  
5:30 – 7:00 pm  
Elizabeth Dunlap Patrick Gallery



Sommer Moya-Mendez, Photography 2

Department of Fine Arts  
2012 SC Schools Photography Exhibition

[\(more info\)](#)



*Crossing, 2011*

Shaun Cassidy, Gerry Derksen, & Seth Rouser  
Paint on paper, Photoshop, Processing and Arduino,  
using a sonar micro-sensor.