

Winthrop Symphony Orchestra

Fall 2025 Audition Excerpts

VIOLIN

1) HALF Note = 104 / Quarter Note = 208

FROM: Haydn – Symphony No. 100 in G Major, “Military” (Mvt. 1: Allegro in Cut Time 2/2)

235

242

shot

247

252

257

262

PRACTICE TIP: Begin working on this excerpt slowly at Quarter Note = 112 and gradually increase your speed. Once you get up to Quarter Note = 180, recalibrate your metronome to HALF Note = 90 (it will be the same speed, but you'll get the correct metric feel of cut time, or four 8th notes to each beat).

2) Scales and Arpeggios, Quarter Note = 80

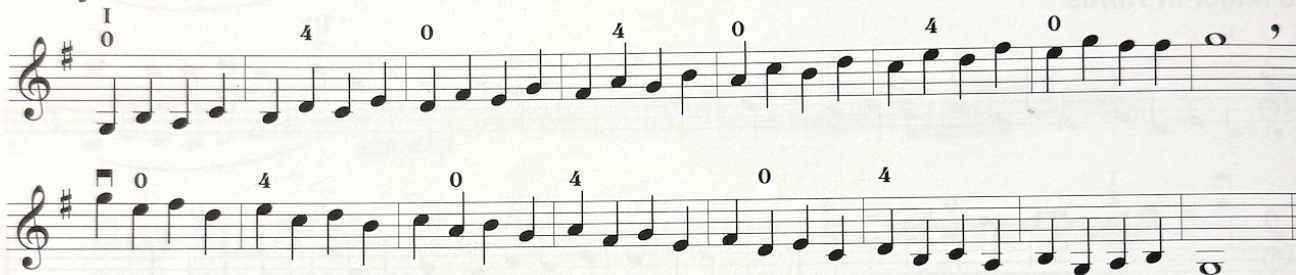
Pick only one option, either OPTION A or OPTION B.

NOTE: Those who select OPTION B will be considered for Violin I and/or principal Violin II.

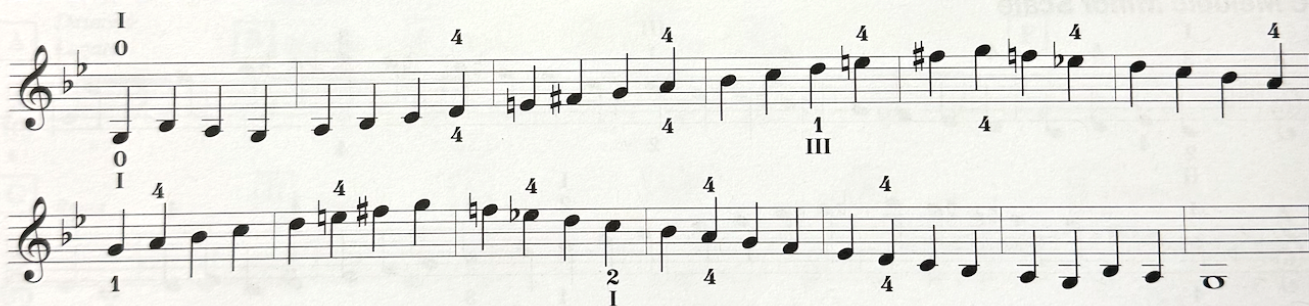
ON NEXT PAGE → → →

OPTION A

G Major in Thirds



G Melodic Minor Scale



OPTION B

G Major Scale



Arpeggio

G Melodic Minor Scale



3) Sight-Reading (music will be provided at the audition)