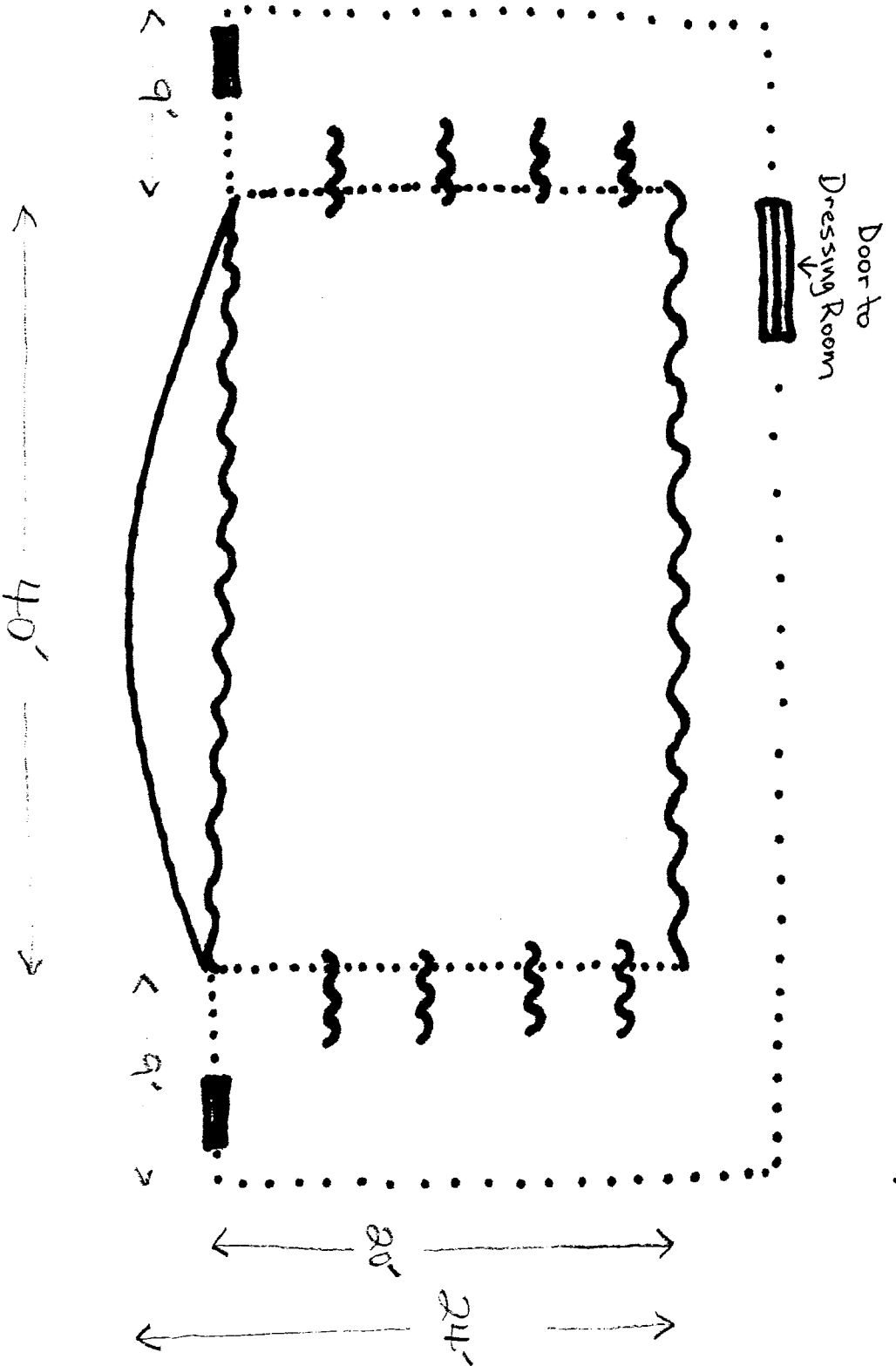


Tillman Auditorium - Winthrop University

(Free hand drawing - not to scale)



Usable stage area: $40' \times 20'$ (Curved apron extends 4' in front of main curtain at center)

Wing space: 9' on either side

Crossover at rear of stage: 4'

* Rear curtain and all eight legs are black; main curtain is maroon (on traveller with purchase line operated from stage right).