

WINTHROP UNIVERSITY MISSION STATEMENT

Winthrop University provides personalized and challenging undergraduate, graduate, and continuing professional education programs of national caliber within a context dedicated to public service to the State of South Carolina. All eligible bachelor's, master's and specialist degrees in the liberal arts and sciences, education, business and the visual and performing arts are nationally accredited – part of the University's commitment to be among the very best institutions of its kind in the nation.

Building on its origins as a women's college, the Winthrop University of the 21st century is achieving national recognition as a competitive and distinctive, co-educational, public, residential comprehensive teaching institution.

Winthrop enrolls an achievement-oriented, culturally diverse and socially responsible student body of 6,000 students and will remain a medium-sized comprehensive teaching university for the foreseeable future. The University recruits South Carolina's best students as well as highly qualified students from beyond the state whose presence adds diversity and enrichment to the campus and state. Winthrop prides itself on being an institution of choice for groups traditionally under-represented on the college campus.

Winthrop's historic campus, located in a dynamic city within a major metropolitan area, provides a contemporary and supportive environment that promotes student learning and development. Winthrop has a diverse and able faculty and professional staff of national caliber and supports their work as effective teachers, scholars, researchers, practitioners, and creative artists. Through this talented group, Winthrop students acquire and develop knowledge, skills, and values that enrich their lives and prepare them to meet the needs and challenges of the contemporary world, including the ability to communicate effectively, appreciate diversity, work collaboratively, synthesize knowledge, and adapt to change. Ongoing assessment of programs and services ensures both that all academic programs challenge students at their highest level of ability and that the library, instructional technology and other academic service areas support courses of study that are consonant with current methods and knowledge. As a result, Winthrop graduates are eminently well prepared to assume successful careers in business, industry, government, education, the arts, and human services, as well as to enter the most competitive graduate or professional schools.

(Adopted by the Winthrop University Board of Trustees - 6/12/98)

(Update Adopted by the Winthrop University Board of Trustees - 11/3/00)

STATEMENTS ON ACCREDITATION

Winthrop University is accredited by the Commission on Colleges of the Southern Association of Colleges and Schools to award bachelor's, master's and specialist degrees. A total of 41 undergraduate and 25 graduate degree programs are available in the College of Arts and Sciences, the College of Business Administration, the Richard W. Riley College of Education and the College of Visual and Performing Arts. Within the four colleges more than 80 undergraduate and 40 graduate programs of study are offered through concentrations and options.

Winthrop's academic programs are measured by national standards of quality. Each academic program that can be nationally accredited through a professional specialized organization has earned that distinction. The documents of accreditation reside in the Office of Academic Affairs. The following is a listing of the specialized organizations that Winthrop University is affiliated with:

Accrediting Council on Education in Journalism and Mass Communication (ACEJMC)

American Chemical Society (ACS)

Association to Advance Collegiate Schools of Business (AACSB International)

Certified Financial Planner Board of Standards (CFP)

Commission on Accreditation for Dietetics Education (CADE)

Commission on Accreditation of Allied Health Education Programs (CAAHEP)

Computing Accreditation Commission of the Accreditation Board for Engineering and Technology, Inc. (CAC/ABET)

Council for Accreditation of Counseling and Related Educational Programs (CACREP)

Council for Interior Design Accreditation (CIDA)

Council on Social Work Education (CSWE)

National Association of the Education of Young Children (NAEYC)

National Association of School Psychologists (NASP)

National Association of Schools of Art and Design (NASAD)

National Association of Schools of Dance (NASD)

National Association of Schools of Music (NASM)

National Association of Schools of Theatre (NAST)

National Council for the Accreditation of Teacher Education (NCATE)

Sport Management Program Review Council (SMPRC)

http://www.winthrop.edu/acad_aff/accred.html

**WINTHROP UNIVERSITY BOARD OF TRUSTEES
2008-2009**

ELECTED MEMBERS	CONGRESSIONAL DISTRICT	TERM EXPIRES
Frances C. Davenport	Alumni	2012
Glenda Pittman Owens	First	2012
Donna Glenn Tinsley	Second	2014
Jane L. LaRoche	Alumni	2010
Janet Smalley	Third	2010
Leland Cox	Fourth	2010
Sue Smith-Rex	At Large	2011
Kathy Bigham, Chair	Fifth	2012
Karl A. Folkens	Sixth	2014
Bob Thompson	At Large	2014

APPOINTED MEMBERS

David E. Vipperman, Governor's Designee	Coterminous with Governor Sanford
Dalton B. Floyd, Jr., Governor's Appointee	Coterminous with Governor Sanford
Samuel R. Foster, Sr., State Superintendent of Education's Designee	Coterminous with Superintendent

EX-OFFICIO MEMBERS

The Honorable Mark Sanford, Governor
 James Rex, State Superintendent of Education
 Anthony J. DiGiorgio, President

INVITED REPRESENTATIVES

Cheryl Ann Fortner-Wood, Chair of Faculty Conference
 Tatiana Sosa, Chair of Council of Student Leaders

ACADEMIC DEPARTMENTS

COLLEGE OF ARTS AND SCIENCES

DEPARTMENT OF BIOLOGY
DEPARTMENT OF CHEMISTRY, PHYSICS AND GEOLOGY
DEPARTMENT OF ENGLISH
DEPARTMENT OF HISTORY
DEPARTMENT OF HUMAN NUTRITION
DEPARTMENT OF MASS COMMUNICATION
DEPARTMENT OF MATHEMATICS
DEPARTMENT OF MODERN LANGUAGES
DEPARTMENT OF PHILOSOPHY AND RELIGIOUS STUDIES
DEPARTMENT OF POLITICAL SCIENCE
DEPARTMENT OF PSYCHOLOGY
DEPARTMENT OF SOCIAL WORK
DEPARTMENT OF SOCIOLOGY AND ANTHROPOLOGY
DEPARTMENT OF SPEECH
STUDENT ACADEMIC SERVICES
SPECIAL PROGRAMS
 AFRICAN AMERICAN STUDIES
 ENVIRONMENTAL SCIENCES
 ENVIRONMENTAL STUDIES
 GERONTOLOGY
 LIBERAL ARTS
 WOMEN'S STUDIES
 INTERNATIONAL AREA STUDIES
 PEACE, JUSTICE, AND CONFLICT
 INTEGRATED MARKETING COMMUNICATION
 RESOLUTION STUDIES

COLLEGE OF BUSINESS ADMINISTRATION

DEPARTMENT OF ACCOUNTING, FINANCE AND ECONOMICS
DEPARTMENT OF COMPUTER SCIENCE AND QUANTITATIVE METHODS
DEPARTMENT OF MANAGEMENT AND MARKETING
STUDENT ACADEMIC SERVICES

RICHARD W. RILEY COLLEGE OF EDUCATION

CENTER FOR PEDAGOGY
DEPARTMENT OF CURRICULUM AND INSTRUCTION
DEPARTMENT OF HEALTH AND PHYSICAL EDUCATION
INSTRUCTIONAL TECHNOLOGY CENTER
STUDENT ACADEMIC SERVICES
MACFEAT LABORATORY SCHOOL
PARTNERSHIPS
 PARTNERSHIPS WITH LOCAL SCHOOLS
 NORTH CENTRAL MATHEMATICS AND SCIENCE REGIONAL CENTER
 SOUTH CAROLINA TEACHING FELLOWS
 CENTER FOR EDUCATOR RETENTION, RECRUITMENT AND ADVANCEMENT (CERRA)

UNIVERSITY COLLEGE

ACADEMY 101
HUMAN EXPERIENCE 102
HONORS PROGRAM
INTERNATIONAL CENTER
LEADERSHIP STUDIES
LEAP
ONCA (OFFICE OF NATIONALLY COMPETITIVE AWARDS)
TEACHING AND LEARNING CENTER
TOUCHSTONE PROGRAM
TRiO
UNDECLARED MAJORS

COLLEGE OF VISUAL AND PERFORMING ARTS

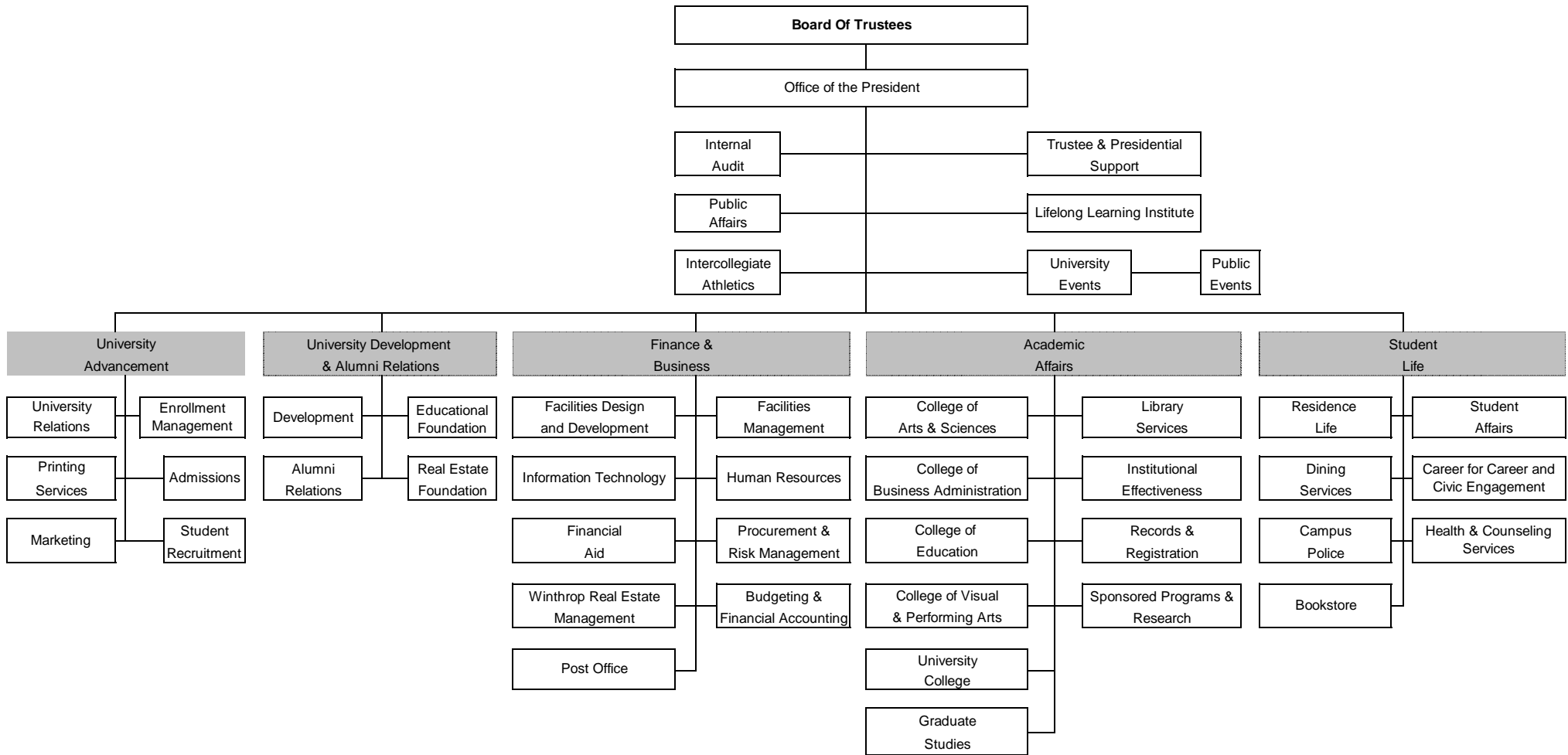
DEPARTMENT OF DESIGN
DEPARTMENT OF FINE ARTS
DEPARTMENT OF MUSIC
DEPARTMENT OF THEATRE AND DANCE
STUDENT ACADEMIC SERVICES
SPECIAL PROGRAMS
 ARTS IN BASIC CURRICULUM PROJECT
 OFFICE OF SPECIAL PROJECTS
 WINTHROP UNIVERSITY GALLERIES

DACUS LIBRARY

PUBLIC SERVICES DIVISION
 REFERENCE DEPARTMENT
 CIRCULATION DEPARTMENT
 ARCHIVES AND SPECIAL COLLECTIONS
TECHNICAL SERVICES DIVISION
 MONOGRAPHS ACQUISITIONS DEPARTMENT
 MONOGRAPHS CATALOGING DEPARTMENT
 SERIALS ACQUISITIONS AND CATALOGING DEPARTMENT
 CATALOGING/DATABASE MANAGEMENT

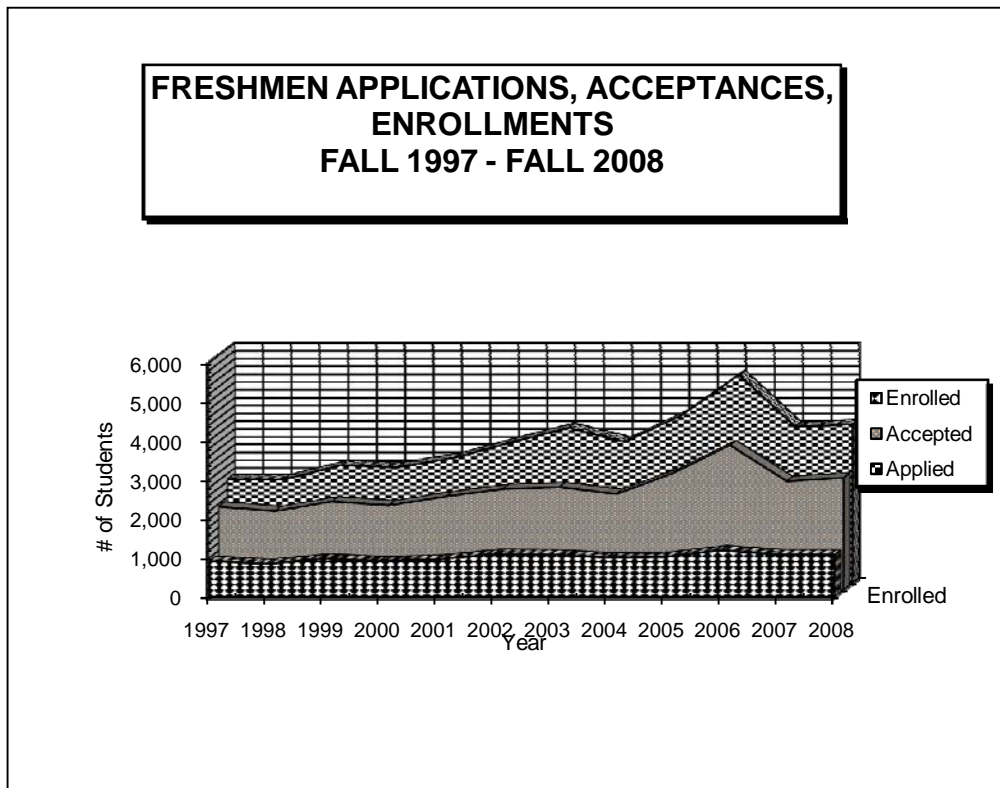
WINTHROP UNIVERSITY

ORGANIZATIONAL CHART 2008 - 2009



FRESHMEN APPLICATIONS, ACCEPTANCES, ENROLLMENTS FALL 1997 - FALL 2008

YEAR	1997	1998	1999	2000	2001	2002	2003	2004	2005	2006	2007	2008
Applications	2,662	2,651	3,014	2,969	3,207	3,604	3,972	3,617	4,303	5,328	3,996	4,065
Acceptances	2,130	2,019	2,261	2,163	2,389	2,579	2,632	2,452	2,985	3,704	2,781	2,872
Acceptances as % of Applied	80.0%	76.2%	75.0%	72.9%	74.5%	71.6%	66.3%	67.8%	69.4%	69.5%	69.6%	70.7%
Enrolled	912	836	971	907	946	1,086	1,074	1,001	1,017	1,183	1,074	1,075
Enrolled as % of Accepted	42.8%	41.4%	42.9%	41.9%	39.6%	42.1%	40.8%	40.8%	34.1%	31.9%	38.6%	37.4%



**FIRST-TIME FRESHMEN CLASS PROFILE
FALL 2008**

GENDER	Winthrop	
	#	Percent
Male	315	29.3%
Female	760	70.7%
Total	1075	100.0%

SCHOOL BACKGROUND	Winthrop	
	#	Percent
S.C. High School	872	81.1%
Out-of-State H.S./GED	183	17.0%
Foreign H.S./GED	17	1.6%
S.C. GED	0	0.0%
Home School	0	0.0%
Unknown High School	3	0.3%
Total	1075	100.0%

RACE	Winthrop			
	Male	Female	Total	Percent
International*	12	12	24	2.2%
Black (Non-Hispanic)	64	188	252	23.4%
Native American	2	3	5	0.5%
Asian / Pacific Islander	3	17	20	1.9%
Hispanic	9	21	30	2.8%
White (Non-Hispanic)	225	519	744	69.2%
Unknown			0	0.0%
Total	315	760	1075	100.0%

ENROLLMENT STATUS	Winthrop			
	Male	Female	Total	Percent
Full-Time	315	760	1075	100.0%
Part-Time	0	0	0	0.0%
Total	315	760	1075	100.0%

HIGH SCHOOL CLASS RANK	Winthrop		
	#	Percent	Cum. %
Top Tenth	188	19.1%	19.1%
Second Tenth	208	21.2%	40.3%
Third Tenth	203	20.7%	60.9%
Fourth Tenth	165	16.8%	77.7%
Fifth Tenth	113	11.5%	89.2%
Bottom 50%	106	10.8%	100.0%
Subtotal	983	100%	
Unknown/unranked	92	8.6%	
Total	1075		

RESIDENCY	Winthrop			
	Male	Female	Total	Percent
South Carolina Residents	242	641	883	82.1%
Non-S.C. Residents	73	119	192	17.9%
Total	315	760	1075	100.0%

UNIVERSITY HOUSING	Winthrop Freshmen			
	Male	Female	Total	Percent
University Residences	265	699	964	89.7%
Off Campus	50	61	111	10.3%
Total	315	760	1075	100.0%

AVERAGE ACT/SAT SCORE	#	Score
SAT		
SAT Math	753	540
SAT Verb	753	535
ACT	310	23
No Score	12	
Total	1075	

AVERAGE HIGH SCHOOL GPA	#	GPA
	1054	3.65

FIRST-TIME ENTERING FRESHMEN FALL 2000 - FALL 2008

	2000	2001	2002	2003	2004	2005	2006	2007	2008	07 to 08	
										% Diff	Diff
Total 1st-Time Freshmen	907	946	1086	1074	1001	1017	1183	1074	1075	0.1%	1
Winthrop's Average SAT and ACT including provisionals, internationals, and age 22 & older											
COMBINED SAT	1056	1055	1055	1069	1068	1080	1054	1053	1075	2.1%	22
VERB	532	530	526	535	536	539	526	525	535	1.9%	10
MATH	524	525	529	534	532	540	528	528	540	2.3%	12
# students w/ SAT	763	756	838	819	809	772	878	772	753	-2.5%	-19
% 1st-Time Freshmen	84.1%	79.9%	77.2%	76.3%	80.8%	75.9%	74.2%	71.9%	70.0%	-2.6%	0
ACT	22	22	22	22	21	22	22	22	23	4.5%	1
# students w/ ACT	135	178	243	251	190	242	299	287	310	8.0%	23
% 1st-Time Freshmen	14.9%	18.8%	22.4%	23.4%	19.0%	23.8%	25.3%	26.7%	28.8%	7.9%	0
# with no SAT or ACT Score	9	12	5	4	2	3	6	15	12	-20.0%	-3
	1.0%	1.3%	0.5%	0.4%	0.2%	0.3%	0.5%	1.4%	1.1%	-20.1%	0

* The use of SAT or ACT scores for admission to Winthrop for all new freshmen is based on the highest score of the two tests.

**SOUTH CAROLINA HIGH SCHOOLS
WHICH CONTRIBUTED TEN OR MORE STUDENTS
TO WINTHROP'S FRESHMAN CLASS IN ONE YEAR
FALL 2004 - FALL 2008**

COUNTY	S.C. High School of Graduation	Enrolled Fall 04	Enrolled Fall 05	Enrolled Fall 06	Enrolled Fall 07	Enrolled Fall 08
Anderson	T.L. Hanna High School	5	1	11	6	8
Anderson	Wren High School	5	7	8	13	8
Beaufort	Beaufort High School	5	7	11	5	6
Beaufort	Hilton Head High School	6	10	8	9	7
Berkeley	Stratford High School	15	15	9	13	7
Charleston	Bishop England High School	5	5	10	5	8
Charleston	Charleston County Schl Of Arts	1	11	10	3	7
Charleston	James Island High School	6	1	10	8	12
Charleston	Wando High School	19	22	22	24	13
Charleston	West Ashley High School	10	13	10	14	7
Cherokee	Gaffney Senior High School	13	3	18	6	8
Colleton	Colleton County High School	11	3	6		3
Dorchester	Fort Dorchester High School	4	10	13	16	6
Dorchester	Summerville High School	9	15	22	17	18
Florence	South Florence High School	10	1	7	7	2
Foreign	Foreign High School / GED	9	14	4	16	17
Georgetown	Waccamaw High School	6	3	2	5	10
Greenville	Eastside High School	12	11	12	12	6
Greenville	Hillcrest High School-Simpson.	14	5	6	5	10
Greenville	James L. Mann High School	7	1	10	7	3
Greenville	Mauldin High School	8	4	17	20	13
Greenville	Riverside High School	1	5	6	17	7
Greenwood	Greenwood High School	4	7	8	3	10
Horry	Socastee High School	5	7	13	4	10
Kershaw	Lugoff-Elgin High School	1	11	15	8	6
Lancaster	Lancaster High School	11	14	5	4	2
Laurens	Laurens School District 55 HS	4	7	6	8	10
Lexington	Chapin High School	4	6	10	19	12
Lexington	Dutch Fork High School	13	12	19	11	17
Lexington	Irmo High School	16	14	14	11	11
Lexington	Lexington High School	15	8	18	19	19
Lexington	White Knoll High School	3	11	10	2	7
Orangeburg	Orangeburg-Wilkinson High Sch	8	1	12	4	1
Richland	A.C. Flora High School	4	4	10	8	3
Richland	Blythewood High School			3	4	14
Richland	Columbia High School	10	3		5	2
Richland	Dreher High School	16	2	6	6	6
Richland	Lower Richland High School	11	5	5	9	4
Richland	Richland Northeast High School	11	9	16	8	6
Richland	Ridge View High School	20	16	12	13	12
Richland	Spring Valley High School	17	15	14	29	25
Spartanburg	Paul M. Dorman High School	13	8	12	9	12
Spartanburg	Spartanburg High School	7	4	6	4	13
Sumter	Crestwood High School	8	3	13	3	6
Sumter	Sumter High School	12	14	13	20	7
York	Clover High School	14	25	28	21	29
York	Fort Mill High School	30	34	32	39	36
York	Northwestern High School	32	38	28	36	24
York	Rock Hill High School	48	33	32	23	18
York	South Pointe High School					15
York	York Comprehensive High School	14	12	15	27	21

FIRST-TIME FRESHMEN ENROLLMENT BY MAJOR FALL 2004 - FALL 2008

COLLEGE / DEGREE PROGRAMS	2004	2005	2006	2007	2008	% OF 5 YEAR TOTAL	07 TO 08 % DIFF.	04 TO 08 % DIFF.
ARTS & SCIENCES	368	360	452	379	458	38.7%	20.8%	24.5%
Biology	116	94	95	84	103	9.4%	22.6%	-11.2%
Chemistry	13	25	33	31	48	2.9%	54.8%	269.2%
English	25	30	45	33	52	3.6%	57.6%	108.0%
Environmental Science	1	1	1	2	6	0.2%	200.0%	N/A
Environmental Studies	4	2	2	4	1	0.2%	N/A	N/A
General Communication Disorders	4	6	12	11	7	0.8%	-36.4%	75.0%
History	20	24	33	24	27	2.5%	12.5%	35.0%
Human Nutrition	10	8	11	14	16	1.1%	14.3%	60.0%
Integrated Marketing Communication	19	11	19	13	19	1.6%	46.2%	0.0%
Mass Communication	45	37	48	43	42	4.1%	-2.3%	-6.7%
Mathematics (B.A.)	11	18	8	4	10	1.0%	150.0%	-9.1%
Mathematics (B.S.)	5	0	11	12	8	0.7%	-33.3%	60.0%
Modern Languages	7	4	11	12	1	0.7%	-91.7%	-85.7%
Philosophy & Religious Studies	0	4	3	1	3	0.2%	200.0%	100.0%
Political Science	24	27	28	33	34	2.8%	3.0%	41.7%
Psychology	46	57	55	39	58	4.9%	48.7%	26.1%
Science Communications	0	0	0	0	1	0.0%	100.0%	100.0%
Social Work	7	2	12	11	9	0.8%	-18.2%	28.6%
Sociology	11	10	25	8	13	1.3%	62.5%	18.2%
BUSINESS ADMINISTRATION	182	184	248	263	222	21.1%	-15.6%	22.0%
Business Administration	124	133	180	190	138	14.7%	-27.4%	11.3%
Computer Science	20	15	23	20	17	1.8%	-15.0%	-15.0%
Information Design *				8	13		62.5%	
Integrated Marketing Communication	19	11	19	13	19	1.6%	46.2%	0.0%
Economics			1	3	4		33.3%	
Sport Management	19	25	25	29	31	2.5%	6.9%	63.2%
EDUCATION	189	184	238	209	179	19.2%	-14.4%	-5.3%
Early Childhood Education	70	61	70	80	43	6.2%	-46.3%	-38.6%
Elementary Education	64	62	70	46	31	5.2%	-32.6%	-51.6%
Middle Level Education			18	11	12		9.1%	
Family & Consumer Science (HEED)	0	1	2	2	2	0.1%	0.0%	100.0%
Physical Education	27	29	38	28	11	2.6%	-60.7%	-59.3%
Special Education	9	6	15	13	15	1.1%	15.4%	66.7%
Sport Management	19	25	25	29	31	2.5%	6.9%	63.2%
Exercise Science***					10	N/A	N/A	N/A
Athletic Training****					24	N/A	N/A	N/A
VISUAL & PERFORMING ARTS	171	198	184	179	183	17.6%	2.2%	7.0%
Art (B.A.)	13	103	22	21	15	3.3%	-28.6%	15.4%
Art (B.F.A.)	79	0	66	92	85	6.2%	-7.6%	7.6%
Art History (B.A.)	1	1	4	4	4	0.3%	0.0%	300.0%
Dance	12	16	18	7	17	1.3%	142.9%	41.7%
Music (B.A.)	7	13	12	2	8	0.8%	300.0%	14.3%
Music Education (Choral)	11	12	19	7	7	1.1%	0.0%	-36.4%
Music Education (Instrumental)	22	18	20	19	21	1.9%	10.5%	-4.5%
Music (Performance)	12	13	7	8	6	0.9%	-25.0%	-50.0%
Theatre	14	22	16	19	20	1.7%	5.3%	42.9%
PRE-MAJOR	129	122	105	86	83	10.1%	-3.5%	-35.7%
INTERDISCIPLINARY MAJORS	38	36	25	42	50	3.7%	19.0%	31.6%
Integrated Marketing Communication	19	11	0	13	19	1.2%	46.2%	0.0%
Sport Management	19	25	25	29	31	2.5%	6.9%	63.2%

* New program "Infid began 2007F"

** Discontinued program

*** New Program began 2008 Spring

**** New Program began 2008 Fall

SOURCE: INSTITUTIONAL RESEARCH 2-7

**HEADCOUNT ENROLLMENT OF TRANSFERS
BY S.C. INSTITUTION OF PREVIOUS ENROLLMENT
FALL 2004 - FALL 2008**

FICE	TECHNICAL COLLEGES	Enrolled Fall 04	Enrolled Fall 05	Enrolled Fall 06	Enrolled Fall 07	Enrolled Fall 08	5 Year % of Total
3996	York	77	94	64	76	79	54.8%
3993	Midlands	19	16	24	16	15	13.2%
3991	Greenville	16	10	4	7	16	6.5%
4920	Trident - Palmer	8	15	15	5	14	7.6%
3992	Piedmont	5	2	1	0	2	1.4%
4926	Tri-County	3	2	3	9	6	3.0%
7602	Chesterfield-Marlboro	1	2	6	0	0	1.6%
3994	Spartanburg	4	7	5	5	2	3.7%
4925	Horry-Georgetown	4	3	4	2	4	2.3%
3995	Central Carolina	4	1	4	2	1	1.9%
3990	Florence-Darlington	0	3	1	2	2	1.1%
6815	Orangeburg-Calhoun	1	2	2	1	0	1.1%
9910	Tech. College of Low Country	3	0	0	0	1	0.5%
10056	Aiken	1	0	2	1	0	0.7%
9932	Williamsburg	1	0	0	0	0	0.2%
4922	South University	1	0	1	0	0	0.4%
5363	Denmark	0	0	0	1	0	0.2%
	Subtotal	148	157	136	127	142	100.0%

FICE	PUBLIC SR COLLEGE & UNIV	Enrolled Fall 04	Enrolled Fall 05	Enrolled Fall 06	Enrolled Fall 07	Enrolled Fall 08	5 Year % of Total
3453	USC-Lancaster	8	10	14	14	16	8.1%
3448	USC-Columbia	12	13	9	6	7	7.0%
3428	College of Charleston	10	7	8	5	4	5.3%
3435	Lander	2	3	3	4	2	2.1%
3451	Coastal Carolina	4	7	3	3	5	3.0%
9226	Francis Marion	3	6	4	5	5	3.2%
3425	Clemson	6	6	3	0	4	2.6%
6951	USC-Upstate	4	9	3	0	3	2.8%
3446	S.C. State	2	6	5	3	1	2.8%
12112	USC-Sumter	1	4	2	1	3	1.4%
3449	USC-Aiken	1	2	0	1	0	0.7%
4927	USC-Union	3	1	1	1	0	1.1%
3454	USC-Salkehatchie	0	1	0	0	1	0.2%
3450	USC-Beaufort	1	1	6	1	0	1.6%
3423	The Citadel	0	0	0	0	0	0.0%
3438	Medical University of S.C.	0	0	0	0	0	0.0%
	Subtotal	57	76	61	44	51	100.0%

**HEADCOUNT ENROLLMENT OF TRANSFERS
BY S.C. INSTITUTION OF PREVIOUS ENROLLMENT
FALL 2004 - FALL 2008**

FICE	PRIVATE SR COLLEGES & UNIV	Enrolled Fall 04	Enrolled Fall 05	Enrolled Fall 06	Enrolled Fall 07	Enrolled Fall 08	5 Year % of Total
3447	Spartanburg Methodist	14	9	8	10	13	7.2%
3419	Charleston Southern (Baptist)	6	3	1	3	2	2.3%
3441	North Greenville	1	1	2	0	1	0.7%
3430	Columbia	1	1	4	3	1	1.6%
3440	Newberry	2	0	2	5	4	1.6%
3427	Coker	4	1	1	2	2	1.4%
3420	Benedict	2	1	1	2	3	1.1%
3424	Clafin	3	4	5	1	3	2.3%
3418	Anderson	1	3	1	1	1	1.1%
3436	Limestone	0	3	1	0	3	0.7%
0439	Morris	0	0	0	1	2	0.2%
3434	Furman	1	0	1	1	0	0.5%
3457	Wofford	1	0	1	0	0	0.4%
3432	Erskine	3	1	3	2	0	1.6%
3431	Converse	0	0	1	0	2	0.2%
3445	Presbyterian	1	0	0	0	3	0.2%
3455	Voorhees	1	0	0	0	0	0.2%
3417	Allen	0	2	1	0	0	0.5%
903404	Johnson and Wales	0	1	0	0	0	0.2%
3422	Central Wesleyan	1	1	0	0	0	0.4%
3429	Columbia International University	1	1	0	1	0	0.5%
3421	Bob Jones	0	0	0	0	2	0.0%
	Subtotal	43	32	33	32	42	100.0%

SUMMARY	Enrolled Fall 04	Enrolled Fall 05	Enrolled Fall 06	Enrolled Fall 07	Enrolled Fall 08	5 Year % of Total
Technical Colleges	148	157	136	127	142	45.7%
Public Sr Colleges & Univ.	57	76	61	44	51	19.9%
Private Sr Colleges & Univ.	43	32	33	32	42	11.2%
Out-of-State	116	94	77	84	93	31.5%
Total	308	359	307	287	328	100.0%

**HEADCOUNT ENROLLMENT
OF FIRST-YEAR GRADUATE STUDENTS AT WINTHROP
BY S.C. INSTITUTIONS OF PREVIOUS ENROLLMENT
Fall 2004- Fall 2008**

FICE	PUBLIC SR COLLEGE & UNIV	Enrolled Fall 04	Enrolled Fall 05	Enrolled Fall 06	Enrolled Fall 07	Enrolled Fall 08	5 Year % SC Public	5 Year % of Total
003425	Clemson	5	42	11	7	12	10.7%	5.7%
003451	Coastal Carolina	9	4	0	2	4	2.5%	1.3%
003428	College of Charleston	5	9	5	0	3	3.1%	1.7%
009226	Francis Marion	0	10	4	0	7	2.3%	1.2%
003435	Lander	2	56	2	1	2	10.0%	5.3%
003438	Medical University of S.C.	0	0	0	0	0	0.0%	0.0%
003446	S.C. State	2	9	8	3	4	3.6%	1.9%
003423	The Citadel	0	4	1	0	1	0.8%	0.4%
003449	USC-Aiken	1	12	0	1	0	2.3%	1.2%
003448	USC-Columbia	13	56	21	14	23	17.1%	9.1%
003453	USC-Lancaster	1	1	1	0	0	0.5%	0.3%
006951	USC-Upstate	3	3	2	2	3	1.6%	0.9%
003456	Winthrop	49	49	90	87	78	45.3%	24.0%
	Subtotal	90	255	145	117	137	100.0%	52.9%

FICE	PRIVATE SR COLLEGE & UNIV	Enrolled Fall 04	Enrolled Fall 05	Enrolled Fall 06	Enrolled Fall 07	Enrolled Fall 08	5 Year % SC Private	5 Year % of Total
003418	Anderson College	0	10	2	1	0	11.7%	1.1%
003420	Benedict	0	1	2	1	0	3.6%	0.3%
003421	Bob Jones	0	0	0	0	0	0.0%	0.0%
003419	Charleston Southern	1	4	1	0	0	5.4%	0.5%
003424	Clafin	0	4	0	0	1	3.6%	0.3%
003427	Coker	0	13	4	4	2	18.9%	1.8%
003429	Columbia International University	0	3	0	0	1	2.7%	0.0%
003430	Columbia	1	11	0	0	0	10.8%	1.0%
003431	Converse	0	6	1	1	1	7.2%	0.7%
003432	Erskine	0	8	1	1	1	9.0%	0.9%
003434	Furman	1	0	1	4	3	5.4%	0.5%
003436	Limestone	1	0	2	2	3	4.5%	0.4%
003439	Morris	0	0	2	0	0	1.8%	0.2%
003440	Newberry	0	0	3	1	7	3.6%	0.3%
003441	North Greenville	1	0	0	1	0	1.8%	0.2%
003445	Presbyterian	0	0	1	4	4	4.5%	0.4%
003422	Southern Wesleyan	0	4	0	0	0	3.6%	0.3%
003455	Vorhees	0	0	0	0	1	0.0%	0.0%
003457	Wofford	1	0	1	0	2	1.8%	0.2%
	Subtotal	6	64	21	20	26	100.0%	9.4%

SUMMARY

SUMMARY	Enrolled Fall 04	Enrolled Fall 05	Enrolled Fall 06	Enrolled Fall 07	Enrolled Fall 08	5 Year % of Total
Public Senior Colleges & Univ.	90	255	145	117	137	52.9%
Private Senior Colleges & Univ.	6	64	21	20	26	9.7%
Out-of-State	94	94	139	117	161	38.7%
Unknown	0	0	4	3	4	
Total	173	413	305	257	328	101.2%

NOTE: Only students classified as fully-admitted, degree-seeking students are counted.

**HEADCOUNT ENROLLMENT
BY GENDER, LEVEL & FULL/PART TIME
FALL 2008**

LEVEL	2008		
	Male	Female	Total
Full-Time Undergraduate	1,421	3,069	4,490
Part-Time Undergraduate	173	405	578
Subtotal	1,594	3,474	5,068
Full-Time Graduate	142	262	404
Part-Time Graduate	168	609	777
Subtotal	310	871	1,181
Grand Total	1,904	4,345	6,249

**HEADCOUNT ENROLLMENT
BY GENDER & LEVEL
FALL 2004 - FALL 2008**

LEVEL	2004		2005		2006		2007		2008	
	Male	Female	Male	Female	Male	Female	Male	Female	Male	Female
Undergraduate	1,588	3,625	1,598	3,589	1,571	3,540	1,562	3,450	1,594	3,474
Graduate	333	901	353	940	348	833	376	994	310	871
Total	1,921	4,526	1,951	4,529	1,919	4,373	1,938	4,444	1,904	4,345
Percent	29.8%	70.2%	30.1%	69.9%	30.5%	69.5%	30.4%	69.6%	30.5%	69.5%

HEADCOUNT ENROLLMENT BY GENDER, CLASS, ETHNICITY & FULL/PART TIME FALL 2008

CLASS/ETHNICITY	FULL-TIME				PART-TIME				TOTAL CLASS	
	FEMALE		MALE		FEMALE		MALE		N	%
	N	%	N	%	N	%	N	%		
FRESHMAN	803	100%	377	100%	13	100%	2	100%	1,195	100%
International	17	2.1%	28	7.4%	0	0.0%	0	0.0%	45	3.8%
Black(Non-Hispanic)	210	26.2%	83	22.0%	6	46.2%	2	100.0%	301	25.2%
Native American	5	0.6%	2	0.5%	0	0.0%	0	0.0%	7	0.6%
Asian	17	2.1%	3	0.8%	0	0.0%	0	0.0%	20	1.7%
Hispanic	22	2.7%	9	2.4%	2	15.4%	0	0.0%	33	2.8%
White(Non-Hispanic)	532	66.3%	252	66.8%	5	38.5%	0	0.0%	789	66.0%
Unknown		0.0%		0.0%		0.0%		0.0%	0	0.0%
SOPHOMORE	731	100%	352	100%	42	100%	22	100%	1,147	100%
International	4	0.5%	9	2.6%	0	0.0%	0	0.0%	13	1.1%
Black(Non-Hispanic)	208	28.5%	94	26.7%	20	47.6%	8	36.4%	330	28.8%
Native American	2	0.3%	3	0.9%	0	0.0%	0	0.0%	5	0.4%
Asian	13	1.8%	3	0.9%	2	4.8%	0	0.0%	18	1.6%
Hispanic	18	2.5%	8	2.3%	1	2.4%	1	4.5%	28	2.4%
White(Non-Hispanic)	486	66.5%	235	66.8%	19	45.2%	13	59.1%	753	65.6%
Unknown		0.0%		0.0%		0.0%		0.0%	0	0.0%
JUNIOR	730	100%	323	100%	58	100%	20	100%	1,131	100%
International	9	1.2%	10	3.1%	1	1.7%	0	0.0%	20	1.8%
Black(Non-Hispanic)	218	29.9%	75	23.2%	19	32.8%	3	15.0%	315	27.9%
Native American	5	0.7%	4	1.2%	2	3.4%	0	0.0%	11	1.0%
Asian	13	1.8%	3	0.9%	0	0.0%	0	0.0%	16	1.4%
Hispanic	19	2.6%	7	2.2%	6	10.3%	0	0.0%	32	2.8%
White(Non-Hispanic)	466	63.8%	224	69.3%	30	51.7%	17	85.0%	737	65.2%
Unknown		0.0%		0.0%		0.0%		0.0%	0	0.0%
SENIOR	789	100%	362	100%	113	100%	64	100%	1,328	100%
International	14	1.8%	10	2.8%	1	0.9%	0	0.0%	25	1.9%
Black(Non-Hispanic)	211	26.7%	81	22.4%	32	28.3%	18	28.1%	342	25.8%
Native American	2	0.3%	0	0.0%	1	0.9%	0	0.0%	3	0.2%
Asian	17	2.2%	5	1.4%	2	1.8%	1	1.6%	25	1.9%
Hispanic	11	1.4%	0	0.0%	2	1.8%	1	1.6%	14	1.1%
White(Non-Hispanic)	534	67.7%	266	73.5%	75	66.4%	44	68.8%	919	69.2%
UNDERGRADUATE SPECIAL	16	100%	7	100%	179	100%	65	100%	267	100%
International	14	87.5%	6	85.7%	1	0.6%	2	3.1%	23	8.6%
Black(Non-Hispanic)	0	0.0%	0	0.0%	52	29.1%	20	30.8%	72	27.0%
Native American	0	0.0%	0	0.0%	0	0.0%	0	0.0%	0	0.0%
Asian	0	0.0%	0	0.0%	0	0.0%	1	1.5%	1	0.4%
Hispanic	0	0.0%	1	14.3%	5	2.8%	0	0.0%	6	2.2%
White(Non-Hispanic)	2	12.5%	0	0%	121	67.6%	42	64.6%	165	61.8%
Unknown		0.0%		0.0%		0.0%		0.0%	0	0.0%
GRADUATE	255	100%	141	100%	265	100%	104	100%	765	100%
International	16	6.3%	19	13.5%	2	0.8%	2	1.9%	39	5.1%
Black(Non-Hispanic)	53	20.8%	13	9.2%	63	23.8%	22	21.2%	151	19.7%
Native American	1	0.4%	0	0.0%	0	0.0%	0	0.0%	1	0.1%
Asian	6	2.4%	2	1.4%	2	0.8%	4	3.8%	14	1.8%
Hispanic	2	0.8%	2	1.4%	3	1.1%	0	0.0%	7	0.9%
White(Non-Hispanic)	177	69.4%	105	74%	195	73.6%	76	73.1%	553	72.3%
Unknown		0.0%		0.0%		0.0%		0.0%	0	0.0%
GRADUATE SPECIAL	7	100%	1	100%	344	100%	64	100%	416	100%
International	0	0.0%	0	0.0%	1	0.3%	1	1.6%	2	0.5%
Black(Non-Hispanic)	0	0.0%	0	0.0%	33	9.6%	6	9.4%	39	9.4%
Native American	0	0.0%	0	0.0%	0	0.0%	0	0.0%	0	0.0%
Asian	0	0.0%	0	0.0%	3	0.9%	0	0.0%	3	0.7%
Hispanic	0	0.0%	0	0.0%	2	0.6%	1	1.6%	3	0.7%
White(Non-Hispanic)	7	100.0%	1	100%	305	88.7%	56	87.5%	369	88.7%
Unknown		0.0%		0%		0.0%		0.0%	0	0.0%
GRAND TOTAL	3,331	53%	1,563	25.0%	1,014	16.2%	341	5.5%	6,249	100%

**HEADCOUNT ENROLLMENT
BY ETHNIC CATEGORY & FULL/PART TIME
FALL 2008**

ETHNIC CATEGORY	FULL-TIME		PART-TIME		TOTAL	
	N	%	N	%	N	%
Undergraduate	4,490	100%	578	100%	5,068	100%
White, non-Hispanic	2,997	66.7%	366	63.3%	3,363	66.4%
Black, non-Hispanic	1,180	26.3%	180	31.1%	1,360	26.8%
International	121	2.7%	5	0.9%	126	2.5%
American Indian	23	0.5%	3	0.5%	26	0.5%
Asian/Pacific Islander	74	1.6%	6	1.0%	80	1.6%
Hispanic	95	2.1%	18	3.1%	113	2.2%
Unknown		0.0%		0.0%	0	0.0%
Graduate	404	100%	777	100%	1,181	100%
White, non-Hispanic	290	71.8%	632	81.3%	922	78.1%
Black, non-Hispanic	66	16.3%	124	16.0%	190	16.1%
International	35	8.7%	6	0.8%	41	3.5%
American Indian	1	0.2%	0	0.0%	1	0.1%
Asian/Pacific Islander	8	2.0%	9	1.2%	17	1.4%
Hispanic	4	1.0%	6	0.8%	10	0.8%
Unknown		0.0%		0.0%	0	0.0%
Total Students	4,894	100%	1,355	100%	6,249	100%
White, non-Hispanic	3,287	67.2%	998	73.7%	4,285	68.6%
Black, non-Hispanic	1,246	25.5%	304	22.4%	1,550	24.8%
International	156	3.2%	11	0.8%	167	2.7%
American Indian	24	0.5%	3	0.2%	27	0.4%
Asian/Pacific Islander	82	1.7%	15	1.1%	97	1.6%
Hispanic	99	2.0%	24	1.8%	123	2.0%
Unknown	0	0.0%	0	0.0%	0	0.0%

**HEADCOUNT ENROLLMENT
FALL 2004 - FALL 2008**

ETHNIC CATEGORY	2004		2005		2006		2007		2008	
	N	%	N	%	N	%	N	%	N	%
Total Students	6,447	100%	6,480	100%	6,292	100%	6,382	100%	6,249	100%
White, non-Hispanic	4,501	69.8%	4,495	69.4%	4,335	68.9%	4,413	69.1%	4,285	68.6%
Black, non-Hispanic	1,634	25.3%	1,638	25.3%	1,615	25.7%	1,603	25.1%	1,550	24.8%
International	137	2.1%	158	2.4%	138	2.2%	133	2.1%	167	2.7%
American Indian	30	0.5%	27	0.4%	27	0.4%	24	0.4%	27	0.4%
Asian/Pacific Islander	61	0.9%	83	1.3%	85	1.4%	96	1.5%	97	1.6%
Hispanic	75	1.2%	79	1.2%	92	1.5%	113	1.8%	123	2.0%
Unknown	9	0.1%	0	0.0%	0	0.0%	0	0.0%	0	0.0%

**AVERAGE WINTHROP STUDENT AGE
1999 - 2008**

LEVEL	1999	2000	2001	2002	2003	2004	2005	2006	2007	2008
Undergraduate	21.6	21.6	21.6	21.6	21.4	21.5	21.5	21.3	21.2	21.3
Graduate	33.5	34.3	34.4	34.5	34.4	33.0	33.0	33.0	32.5	32.9

**UNDERGRADUATE HEADCOUNT ENROLLMENT
BY AGE OF STUDENTS
FALL 2008**

Age	Winthrop		Winthrop Cum FT %	Winthrop		Winthrop Cum PT %
	FT #	FT %		PT #	PT %	
under 18	10	0.2%	0.2%	152	26.3%	26.3%
18 - 19	1,740	38.8%	39.0%	72	12.5%	38.8%
20 - 21	1,712	38.1%	77.1%	21	3.6%	42.4%
22 - 24	764	17.0%	94.1%	101	17.5%	59.9%
25 - 29	149	3.3%	97.4%	70	12.1%	72.0%
30 - 34	46	1.0%	98.5%	50	8.7%	80.6%
35 - 39	38	0.8%	99.3%	33	5.7%	86.3%
40 - 49	27	0.6%	99.9%	57	9.9%	96.2%
50 - 64	2	0.0%	100.0%	19	3.3%	99.5%
65 and older	2	0.0%	100.0%	3	0.5%	100.0%
Unknown	0	0.0%	100.0%	0	0.0%	100.0%
Total	4,490	100.0%	100.0%	578	100.0%	100.0%

Note: State percentiles are for all S.C. Public Senior Institutions.

**UNDERGRADUATE STUDENTS AGE 25 AND OLDER
FALL 1999-2008**

	1999	2000	2001	2002	2003	2004	2005	2006	2007	2008
Number	550	547	548	555	530	558	521	491	447	496
Percent	11.93%	11.73%	11.33%	10.98%	10.27%	10.81%	10.09%	9.51%	8.92%	9.79%

**GRADUATE HEADCOUNT ENROLLMENT
BY AGE OF STUDENTS
FALL 2008**

Age	Winthrop		Winthrop Cum FT %	Winthrop		Winthrop Cum PT %
	FT #	FT %		PT #	PT %	
under 18	0	0.0%	0.0%	0	0.0%	0.0%
18 - 19	0	0.0%	0.0%	0	0.0%	0.0%
20 - 21	2	0.5%	0.5%	0	0.0%	0.0%
22 - 24	172	42.6%	43.1%	92	11.8%	11.8%
25 - 29	130	32.2%	75.2%	220	28.3%	40.2%
30 - 34	36	8.9%	84.2%	132	17.0%	57.1%
35 - 39	33	8.2%	92.3%	103	13.3%	70.4%
40 - 49	21	5.2%	97.5%	124	16.0%	86.4%
50 - 64	10	2.5%	100.0%	93	12.0%	98.3%
65 and older	0	0.0%	100.0%	13	1.7%	100.0%
Unknown	0	0.0%	100.0%	0	0.0%	100.0%
Total	404	100.0%	100.0%	777	100.0%	100.0%

Note: State percentiles are for all S.C. Public Senior Institutions.

HEADCOUNT ENROLLMENT BY CLASS & SEMESTER

FALL

LEVEL / CLASS	2004	2005	2006	2007	2008
Undergraduate	5,213	5,187	5,111	5,012	5,068
New Freshmen	1,001	1,019	1,183	1,074	1,075
Other Freshman	156	118	119	112	120
Sophomore	1,210	1,107	1,115	1,176	1,147
Junior	1,254	1,227	1,070	1,116	1,131
Senior	1,336	1,422	1,400	1,279	1,328
UG Special	256	294	224	255	267
Graduate	1,234	1,293	1,181	1,370	1,181
Total	6,447	6,480	6,292	6,382	6,249

SPRING

LEVEL / CLASS	2004	2005	2006	2007	2008
Undergraduate	4,861	4,811	4,704	4,778	4,687
Freshman	1,005	915	901	1,064	993
Sophomore	1,060	1,066	973	997	1,048
Junior	1,141	1,177	1,166	1,045	1,046
Senior	1,422	1,407	1,453	1,449	1,366
UG Special	233	246	211	223	234
Graduate	929	996	891	807	1,007
Total	5,790	5,807	5,595	5,585	5,694

SUMMER

LEVEL / CLASS	2004	2005	2006	2007	2008
Undergraduate	1,237	1,091	1,051	1,088	1,192
Freshman	40	25	28	41	39
Sophomore	185	183	126	150	206
Junior	341	268	290	318	329
Senior	605	568	570	534	563
UG Special	66	47	37	45	55
Graduate	1,093	864	955	750	868
Total	2,330	1,955	2,006	1,838	2,060

**FULL-TIME/PART-TIME HEADCOUNT
ENROLLMENT AND CREDIT HOUR PRODUCTION
FALL 1999 - FALL 2008**

LEVEL	1999		2000		2001		2002		2003	
	HC	CHP	HC	CHP	HC	CHP	HC	CHP	HC	CHP
Undergraduate	4,611	62,943	4,650	64,354	4,838	67,034	5,056	71,006	5,161	73,086
Full-Time	3,940	59,566	4,032	61,159	4,201	63,831	4,448	67,722	4,597	70,120
Part-Time	671	3,377	618	3,195	637	3,203	608	3,284	564	2,966
Graduate	1,229	6,112	1,412	7,644	1,468	6,915	1,406	6,891	1,397	7,207
Full-Time	281	2,870	289	2,978	270	2,783	303	3,003	328	3,309
Part-Time	948	3,242	1,123	4,666	1,198	4,132	1,103	3,888	1,069	3,898

LEVEL	2004		2005		2006		2007		2008	
	HC	CHP	HC	CHP	HC	CHP	HC	CHP	HC	CHP
Undergraduate	5,213	73,807	5,187	73,547	5,101	67,220	4,802	71,211	5,068	71,572
Full-Time	4,617	70,650	4,587	70,507	4,622	64,192	4,461	68,408	4,490	68,514
Part-Time	596	3,157	600	3,040	479	3,028	341	2,803	578	3,058
Graduate	1,234	6,701	1,293	6,793	1,131	3,229	780	7,792	1,181	7,421
Full-Time	327	3,267	328	3,268	312	2,067	393	4,132	404	4,218
Part-Time	907	3,434	965	3,525	819	1,162	387	3,660	777	3,203

Note: Headcount and CHP by classification of student.

**RESIDENCE HALL ENROLLMENT
COMPARED TO HEADCOUNT ENROLLMENT
BY CLASS
FALL 2008**

CLASS LEVEL	MALE RESIDENTS	FEMALE RESIDENTS	TOTAL RESIDENTS	HEADCOUNT ENROLLMENT	% RESIDENTS/ HEADCOUNT
Undergraduates	675	1,614	2,289	5,068	45.2%
New Freshmen	260	683	943	1,075	87.7%
Other Freshmen	41	32	73	120	60.8%
Sophomore	224	511	735	1,147	64.1%
Junior	84	222	306	1,131	27.1%
Senior	63	161	224	1,328	16.9%
Specials	3	5	8	267	3.0%
Graduates	4	9	13	1,181	1.1%
Grand Total	679	1,623	2,302	6,249	36.8%

FALL 2007

CLASS LEVEL	MALE RESIDENTS	FEMALE RESIDENTS	TOTAL RESIDENTS	HEADCOUNT ENROLLMENT	% RESIDENTS/ HEADCOUNT
Undergraduates	683	1,654	2,337	5,012	46.6%
New Freshmen	297	651	948	1,064	89.1%
Other Freshmen	28	43	71	122	58.2%
Sophomore	208	605	813	1,176	69.1%
Junior	95	246	341	1,116	30.6%
Senior	50	105	155	1,279	12.1%
Specials	5	4	9	255	3.5%
Graduates	7	17	24	1,370	1.8%
Grand Total	690	1,671	2,361	6,382	37.0%

**UNDERGRADUATE
RESIDENCE/NON-RESIDENCE HALL ENROLLMENT
FALL 1998 - FALL 2008**

RESIDENCY	1998	1999	2000	2001	2002	2003	2004	2005	2006	2007	2008
Residence Hall	2,035	2,159	2,152	2,236	2,303	2,466	2,229	2,137	2,257	2,337	2,289
% of Total	46.9%	46.8%	46.3%	46.2%	45.5%	47.8%	42.8%	41.2%	44.2%	46.6%	45.2%
Non-Residence Hall	2,305	2,452	2,498	2,602	2,753	2,695	2,984	3,050	2,854	2,675	2,779
% of Total	53.1%	53.2%	53.7%	53.8%	54.5%	52.2%	57.2%	58.8%	55.8%	53.4%	54.8%
Total UG Enrollment	4,340	4,611	4,650	4,838	5,056	5,161	5,213	5,187	5,111	5,012	5,068

**HEADCOUNT ENROLLMENT
BY STATE OF ORIGIN
FALL 2004 - FALL 2008**

YEAR	S.C. RESIDENTS						OUT-OF-STATE RESIDENTS						TOTAL STUDENTS					
	UG		GRAD		TOTAL		UG		GRAD		TOTAL		UG		GRAD		TOTAL	
	#	%	#	%	#	%	#	%	#	%	#	%	#	%	#	%	#	%
2004	4,514	82.6%	950	17.4%	5,464	84.8%	699	71.1%	284	28.9%	983	15.2%	5,213	80.9%	1,234	19.1%	6,447	100%
2005	4,483	82.1%	980	17.9%	5,463	84.3%	704	69.2%	313	30.8%	1,017	15.7%	5,187	80.0%	1,293	20.0%	6,480	100%
2006	4,450	83.6%	872	16.4%	5,322	84.6%	661	68.1%	309	31.9%	970	15.4%	5,111	81.2%	1,181	18.8%	6,292	100%
2007	4,379	81.2%	1017	18.8%	5,396	84.6%	633	64.2%	353	35.8%	986	15.4%	5,012	78.5%	1,370	21.5%	6,382	100%
2008	4,353	84.4%	804	15.6%	5,157	82.5%	715	65.5%	377	34.5%	1,092	17.5%	5,068	81.1%	1,181	18.9%	6,249	100%

Note: State of origin is state of residence at time of entry.

**COUNTRY OF ORIGIN OF INTERNATIONAL STUDENTS
FALL 2004 - FALL 2008**

COUNTRY	FALL 2004			FALL 2005			FALL 2006			FALL 2007			FALL 2008			% of 5 Year Total		
	UG	G	Tot	UG	G	Tot	UG	G	Tot	UG	G	Tot	UG	G	Tot	UG	G	Total
Armenia	0	0	0	1	0	1	0	0	0	0	0	0	0	0	0	0.19%	0.00%	0.14%
Australia	0	0	0	3	0	3	3	0	3	4	0	4	3	0	3	0.00%	0.00%	1.77%
Austria	0	0	0	1	0	1	2	0	2	1	0	1	1	0	1	0.93%	0.00%	0.68%
Bahamas	0	0	0	1	0	1	1	1	2	1	1	2	1	0	1	0.74%	1.04%	0.82%
Bahrain	0	1	1	0	1	1	0	0	0	0	0	0	0	0	0	0.00%	1.04%	0.27%
Bolivia	0	0	0	1	0	1	2	0	2	2	0	2	1	0	1	1.11%	0.00%	0.82%
Brazil	7	0	7	10	2	12	10	2	12	6	3	9	7	4	11	7.41%	5.70%	6.96%
Bulgaria	1	2	3	1	3	4	0	1	1	0	1	1	0	2	2	0.37%	4.66%	1.50%
Cameroon	0	0	0	0	1	1	0	0	0	0	0	0	0	0	0	0.00%	0.52%	0.14%
Canada	19	6	25	24	4	28	20	3	23	18	3	21	24	1	25	19.44%	8.81%	16.64%
Chile	0	0	0	0	0	0	1	0	1	0	0	0	0	0	0	0.19%	0.00%	0.14%
China, Republic of	2	2	4	1	2	3	0	1	1	2	1	3	5	4	9	1.85%	5.18%	2.73%
Colombia	3	0	3	5	1	6	0	1	1	0	2	2	0	2	2	1.48%	3.11%	1.91%
Croatia	1	0	1	1	0	1	1	0	1	0	0	0	0	0	0	0.56%	0.00%	0.41%
Czech Republic	0	0	0	0	0	0	0	0	0	0	0	0	0	0	0	0.00%	0.00%	0.00%
Denmark	1	0	1	2	0	2	1	0	1	1	0	1	0	0	0	0.93%	0.00%	0.68%
Ecuador	0	1	1	1	0	1	0	0	0	0	0	0	0	0	0	0.19%	0.52%	0.27%
El Salvador	0	0	0	1	0	1	0	0	2	0	0	0	0	0	0	0.19%	0.00%	0.41%
Estonia	0	0	0	0	0	0	0	0	0	0	0	0	1	0	1	0.19%	0.00%	0.14%
Finland	0	0	0	2	0	2	2	0	2	1	0	1	1	0	1	1.11%	0.00%	0.82%
France	10	3	13	6	4	10	11	1	12	8	2	10	10	2	12	8.33%	6.22%	7.78%
Gabon	1	0	1	1	0	1	0	0	0	0	1	1	0	0	0	0.37%	0.52%	0.41%
Georgia	0	0	0	0	0	0	0	0	0	1	0	1	0	0	0	0.19%	0.00%	0.14%
Germany	1	0	1	4	0	4	6	0	6	5	1	6	5	1	6	3.89%	1.04%	3.14%
Ghana	1	0	1	1	0	1	1	0	1	2	0	2	1	0	1	1.11%	0.00%	0.82%
Haiti	0	0	0	0	0	0	0	0	0	0	0	0	0	0	0	0.00%	0.00%	0.00%
Hong Kong	2	0	2	1	0	1	1	1	2	0	1	1	0	1	1	0.74%	1.55%	0.95%
Hungary	0	1	1	0	1	1	0	1	1	0	1	1	0	0	0	0.00%	2.07%	0.55%
Iceland	0	0	0	0	0	0	0	0	0	0	0	0	0	2	2	0.00%	1.04%	0.27%
India	3	5	8	4	5	9	3	3	6	3	3	6	7	3	10	3.70%	9.84%	5.32%
Indonesia	0	0	0	0	0	0	0	0	0	0	0	0	0	0	0	0.00%	0.00%	0.00%
Iran	0	0	0	0	0	0	0	0	0	0	0	0	0	0	0	0.00%	0.00%	0.00%
Ireland	4	0	4	3	0	3	2	0	2	2	0	2	1	0	1	2.22%	0.00%	1.64%
Israel	0	0	0	0	0	0	0	0	0	0	1	1	0	2	2	0.00%	1.55%	0.41%
Italy	0	0	0	0	0	0	0	0	0	0	0	0	1	0	1	0.19%	0.00%	0.14%
Jamaica	2	1	3	0	1	1	2	2	4	0	0	0	0	0	0	0.74%	2.07%	1.09%
Japan	3	1	4	0	2	2	0	2	2	0	0	0	1	0	1	0.74%	2.59%	1.23%
Jordan	0	0	0	0	0	0	0	0	0	0	0	0	1	0	1	0.19%	0.00%	0.14%
Kazakhstan	0	0	0	0	0	0	0	0	0	1	0	1	0	0	0	0.19%	0.00%	0.14%
Kenya	3	0	3	5	1	6	4	2	6	2	1	3	0	0	0	2.59%	2.07%	2.46%
Korea, Republic of	2	0	2	2	0	2	2	0	2	2	0	2	2	0	2	1.85%	0.00%	1.36%
Kyrgyzstan	0	0	0	0	0	0	1	0	1	0	0	0	0	0	0	0.19%	0.00%	0.14%
Lebanon	0	0	0	0	0	0	0	0	0	0	0	0	0	0	0	0.00%	0.00%	0.00%
Liberia	2	1	3	2	1	3	1	0	1	1	0	1	1	0	1	1.30%	1.04%	1.23%
Lithuania	0	0	0	0	0	0	0	1	1	0	1	1	0	0	0	0.00%	1.04%	0.27%
Macedonia	0	0	0	0	0	0	0	0	0	1	0	1	0	0	0	0.19%	0.00%	0.14%
Mauritius	0	0	0	0	0	0	0	0	0	0	0	0	1	1	1	0.00%	0.52%	0.14%
Morocco	1	0	1	0	0	0	0	0	0	0	0	0	0	0	0	0.19%	0.00%	0.14%
Mexico	0	0	0	0	0	0	0	1	1	0	0	0	0	0	0	0.00%	0.52%	0.14%
Nepal	1	0	1	1	0	1	1	0	1	0	0	0	0	1	1	0.56%	0.52%	0.55%
Netherlands	0	0	0	1	1	2	1	1	2	1	0	1	2	0	2	0.93%	1.04%	0.95%
New Zealand	1	0	1	1	0	1	1	0	1	1	0	1	1	0	1	0.93%	0.00%	0.68%
Niger	0	1	1	0	0	0	0	0	0	0	0	0	0	0	0	0.00%	0.52%	0.14%
Nigeria	3	2	5	3	0	3	3	0	3	1	1	2	1	1	2	2.04%	2.07%	2.05%
Norway	0	0	0	1	3	4	0	0	0	3	0	3	0	0	0	0.74%	1.55%	0.95%
Pakistan	0	0	0	0	0	0	0	0	0	0	0	0	1	0	1	0.19%	0.00%	0.14%
Panama	0	0	0	0	0	0	0	0	0	0	0	0	0	0	0	0.00%	0.00%	0.00%
Peru	3	2	5	1	2	3	1	3	4	1	1	2	2	0	2	1.48%	4.15%	2.18%
Philippines	0	2	2	1	1	2	0	1	1	0	2	2	0	1	1	0.19%	3.63%	1.09%
Poland	2	1	3	0	2	2	0	1	1	0	0	0	0	0	0	0.37%	2.07%	0.82%
Portugal	0	0	0	0	0	0	0	0	0	0	0	0	0	0	0	0.00%	0.00%	0.00%
Romania	0	0	0	4	0	4	7	0	7	0	1	1	0	2	2	2.04%	1.55%	1.91%
Russia	1	0	1	1	0	1	0	0	0	0	0	0	2	0	2	0.74%	0.00%	0.55%
Saudi Arabia	0	0	0	0	0	0	0	1	1	15	3	18	27	4	31	7.78%	4.15%	6.82%
Senegal	0	1	1	1	1	2	1	0	1	1	0	1	0	0	0	0.56%	1.04%	0.68%
Sierra Leone	0	1	1	0	1	1	0	0	0	0	0	0	0	0	0	0.00%	1.04%	0.27%
Slovakia	0	1	1	0	0	0	0	0	0	0	0	0	1	0	1	0.19%	0.52%	0.27%

South Africa	1	0	1	1	0	1	1	0	1	0	0	0	0	1	1	0.56%	0.52%	0.55%
Spain	2	2	4	2	1	3	3	0	3	2	0	2	1	0	1	1.85%	1.55%	1.77%
Sri Lanka	0	0	0	0	0	0	0	0	0	0	0	0	0	0	0	0.00%	0.00%	0.00%
Swaziland	0	0	0	0	0	0	0	0	0	1	0	1	1	0	1	0.37%	0.00%	0.27%
Sweden	0	0	0	1	0	1	1	0	1	2	0	2	1	0	1	0.93%	0.00%	0.68%
Switzerland	1	0	1	1	0	1	1	0	1	1	0	1	1	0	1	0.93%	0.00%	0.68%
Taiwan	0	2	2	0	1	1	0	0	0	0	0	0	2	0	2	0.37%	1.55%	0.68%
Tanzania	1	0	1	1	0	1	1	0	1	0	0	0	0	0	0	0.56%	0.00%	0.41%
Thailand	0	2	2	0	1	1	0	0	0	0	0	0	0	0	0	0.00%	1.55%	0.41%
Tonga	0	0	0	1	0	1	0	0	0	0	0	0	0	0	0	0.19%	0.00%	0.14%
Trinidad and Tobago	0	0	0	0	0	0	0	0	0	0	1	1	0	2	2	0.00%	1.55%	0.41%
Turkey	0	0	0	0	0	0	0	0	0	0	0	0	1	0	1	0.19%	0.00%	0.14%
Uganda	0	0	0	0	0	0	2	0	2	2	0	2	2	0	2	1.11%	0.00%	0.82%
Ukraine	1	1	2	0	1	1	0	1	1	0	0	0	0	0	0	0.19%	1.55%	0.55%
United Kingdom	6	1	7	4	0	4	2	0	2	0	0	0	2	2	4	2.59%	1.55%	2.32%
Uzbekistan	1	0	1	1	0	1	1	0	1	1	0	1	0	0	0	0.74%	0.00%	0.55%
Venezuela	0	0	0	0	0	0	0	0	2	1	0	1	0	0	0	0.19%	0.00%	0.41%
Vietnam	0	0	0	0	0	0	0	0	0	0	1	1	3	1	4	0.56%	1.04%	0.68%
Yugoslavia	0	0	0	0	0	0	0	0	0	0	0	0	0	0	0	0.00%	0.00%	0.00%
Zambia	0	0	0	1	0	1	1	0	1	1	0	1	0	0	0	0.56%	0.00%	0.41%
Zimbabwe	1	0	1	2	0	2	2	0	2	1	1	2	1	1	2	1.30%	1.04%	1.23%
TOTAL	94	43	137	114	44	158	107	31	138	99	34	133	126	41	167	100.0%	100.0%	100.0%

GEOGRAPHICAL DISTRIBUTION OF STUDENTS BY STATE FALL 2004 - FALL 2008

STATE	FALL 2004			FALL 2005			FALL 2006			FALL 2007			FALL 2008			% of 5 Year Total		
	UG	G	Total	UG	G	Total	UG	G	Total	UG	G	Total	UG	G	Total	UG	G	Total
Alabama	4	1	5	4	0	4	3	0	3	2	0	2	2	0	2	0.06%	0.02%	0.05%
Alaska	2	0	2	1	0	1	1	0	1	1	0	1	1	0	1	0.02%	0.00%	0.02%
Arizona	3	0	3	3	0	3	3	0	3	2	0	2	2	0	2	0.05%	0.00%	0.04%
Arkansas	0	0	0	0	0	0	1	0	1	1	1	2	1	1	2	0.01%	0.02%	0.01%
California	5	0	5	4	1	5	6	1	7	2	3	5	4	1	5	0.08%	0.10%	0.09%
Colorado	1	0	1	2	0	2	3	0	3	3	0	3	3	0	3	0.04%	0.00%	0.04%
Connecticut	7	0	7	8	0	8	4	0	4	5	0	5	8	0	8	0.12%	0.00%	0.09%
Delaware	4	0	4	4	0	4	2	0	2	1	0	1	1	0	1	0.05%	0.00%	0.04%
Florida	37	4	41	42	5	47	39	2	41	26	4	30	43	4	47	0.70%	0.29%	0.62%
Georgia	63	6	69	63	6	69	50	6	56	58	13	71	65	9	74	1.14%	0.61%	1.03%
Hawaii	2	0	2	2	0	2	2	0	2	2	0	2	0	0	0	0.04%	0.00%	0.03%
Idaho	0	0	0	1	0	1	1	0	1	0	0	0	0	0	0	0.01%	0.00%	0.01%
Illinois	8	2	10	9	3	12	8	1	9	7	0	7	9	2	11	0.16%	0.12%	0.15%
Indiana	3	0	3	3	0	3	2	1	3	3	3	6	4	1	5	0.05%	0.08%	0.06%
Iowa	4	0	4	6	0	6	5	0	5	3	1	4	3	1	4	0.09%	0.02%	0.07%
Kansas	3	1	4	0	1	1	1	0	1	4	0	4	4	0	4	0.04%	0.04%	0.04%
Kentucky	5	3	8	8	1	9	5	1	6	4	0	4	4	3	7	0.11%	0.10%	0.11%
Louisiana	1	0	1	4	0	4	1	0	1	1	0	1	1	0	1	0.03%	0.00%	0.03%
Maine	1	0	1	0	0	0	1	0	1	2	0	2	0	0	0	0.02%	0.00%	0.02%
Maryland	59	2	61	49	2	51	51	1	52	57	1	58	48	3	51	1.05%	0.12%	0.87%
Massachusetts	8	0	8	8	0	8	10	0	10	8	1	9	10	2	12	0.17%	0.02%	0.14%
Michigan	2	1	3	2	5	7	4	3	7	5	6	11	8	4	12	0.06%	0.29%	0.11%
Minnesota	5	0	5	8	0	8	3	0	3	2	0	2	7	1	8	0.09%	0.00%	0.07%
Mississippi	4	0	4	2	0	2	3	0	3	2	0	2	4	0	4	0.05%	0.00%	0.04%
Missouri	3	1	4	1	1	2	3	1	4	3	0	3	4	0	4	0.05%	0.06%	0.05%
Montana	2	0	2	1	0	1	0	0	0	0	0	0	0	0	0	0.01%	0.00%	0.01%
Nebraska	2	0	2	0	1	1	1	1	2	1	0	1	1	0	1	0.02%	0.04%	0.02%
Nevada	0	0	0	5	0	5	0	0	0	1	0	1	0	0	0	0.03%	0.00%	0.02%
New Hampshire	2	0	2	2	0	2	9	0	9	8	0	8	6	0	6	0.10%	0.00%	0.08%
New Jersey	12	1	13	14	2	16	19	2	21	14	1	15	19	2	21	0.29%	0.12%	0.25%
New Mexico	3	1	4	3	1	4	3	0	3	1	0	1	1	0	1	0.05%	0.04%	0.05%
New York	30	9	39	27	14	41	31	7	38	34	1	35	38	2	40	0.59%	0.61%	0.60%
North Carolina	130	200	330	135	200	335	121	233	354	128	260	388	136	277	413	2.50%	17.56%	5.49%
Ohio	48	2	50	49	6	55	43	2	45	41	3	44	42	4	46	0.88%	0.26%	0.76%
Oklahoma	3	0	3	1	0	1	1	0	1	0	0	0	0	0	0	0.02%	0.00%	0.02%
Oregon	4	0	4	3	0	3	3	0	3	0	0	0	0	1	1	0.05%	0.00%	0.04%
Pennsylvania	25	1	26	21	4	25	20	3	23	18	7	25	23	4	27	0.41%	0.29%	0.39%
Rhode Island	2	1	3	1	0	1	1	1	2	1	1	2	3	0	3	0.02%	0.06%	0.03%
South Carolina	4,514	950	5,464	4,483	980	5,463	4,450	872	5,322	4,379	1,017	5,396	4,353	804	5,157	86.69%	75.10%	84.39%
South Dakota	0	0	0	0	0	0	0	0	0	0	0	0	0	0	0	0.00%	0.00%	0.00%
Tennessee	18	2	20	21	2	23	15	2	17	11	1	12	10	1	11	0.32%	0.14%	0.28%
Texas	10	0	10	9	0	9	11	1	12	12	1	13	12	2	14	0.20%	0.04%	0.17%
Utah	2	0	2	2	0	2	2	0	2	1	0	1	1	0	1	0.03%	0.00%	0.03%
Vermont	3	0	3	2	0	2	1	0	1	1	0	1	2	0	2	0.03%	0.00%	0.03%
Virginia	53	1	54	53	6	59	51	6	57	46	7	53	44	7	51	0.99%	0.39%	0.87%
Washington	4	0	4	2	0	2	1	0	1	1	0	1	1	0	1	0.04%	0.00%	0.03%
West Virginia	13	1	14	9	2	11	7	2	9	7	2	9	9	1	10	0.18%	0.14%	0.17%
Wisconsin	4	1	5	2	2	4	1	1	2	1	1	2	2	0	2	0.04%	0.10%	0.05%
Wyoming	0	0	0	0	0	0	0	0	0	0	0	0	0	0	0	0.00%	0.00%	0.00%
Total U.S. States	5,118	1,191	6,309	5,079	1,245	6,324	5,003	1,150	6,153	4,910	1,335	6,245	4,939	1,137	6,076	97.79%	96.77%	97.59%
Dist. of Columbia	1	0	1	1	0	1	1	0	1	0	0	0	0	0	0	0.01%	0.00%	0.01%
International	94	43	137	148	55	203	107	31	138	99	34	133	126	41	167	2.18%	3.21%	2.38%
Puerto Rico	0	0	0	0	0	0	0	0	0	0	0	0	0	0	0	0.00%	0.00%	0.00%
Virgin Islands of the U.S	0	0	0	0	0	0	0	0	0	0	0	0	0	0	0	0.00%	0.00%	0.00%
Unknown	0	0	0	0	0	0	0	0	0	3	1	4	3	3	6	0.01%	0.02%	0.02%
Grand Total	5,213	1,234	6,447	5,228	1,300	6,528	5,111	1,181	6,292	5,012	1,370	6,382	5,068	1,181	6,249	100.0%	100.0%	100.0%

**GEOGRAPHICAL DISTRIBUTION OF STUDENTS
BY S.C. COUNTY
FALL 2004 - FALL 2008**

COUNTY	FALL 2004			FALL 2005			FALL 2006			FALL 2007			FALL 2008			% of 5 Year Total		
	UG	G	Total	UG	G	Total	UG	G	Total	UG	G	Total	UG	G	Total	UG	G	Total
Abbeville	12	0	12	16	12	28	9	13	22	8	9	17	7	3	10	0.20%	0.59%	0.28%
Aiken	97	13	110	80	11	91	84	12	96	74	6	80	74	5	79	1.60%	0.75%	1.43%
Allendale	5	0	5	8	0	8	4	0	4	4	0	4	3	0	3	0.09%	0.00%	0.08%
Anderson	70	11	81	62	23	85	80	14	94	84	25	109	79	24	103	1.47%	1.55%	1.48%
Bamberg	3	1	4	3	0	3	2	0	2	10	0	10	6	0	6	0.09%	0.02%	0.08%
Barnwell	18	0	18	12	3	15	10	5	15	8	12	20	12	4	16	0.23%	0.38%	0.26%
Beaufort	69	73	142	91	45	136	89	3	92	93	73	166	95	6	101	1.71%	3.20%	2.00%
Berkeley	105	7	112	125	4	129	123	3	126	119	3	122	121	7	128	2.32%	0.38%	1.94%
Calhoun	11	2	13	13	0	13	12	1	11	8	1	9	7	1	9	0.20%	0.08%	0.17%
Charleston	257	20	277	280	18	298	296	19	315	293	14	307	254	18	272	5.39%	1.42%	4.61%
Cherokee	39	7	46	33	3	36	45	2	47	47	3	50	39	5	44	0.79%	0.32%	0.70%
Chester	128	31	159	109	32	141	113	14	127	102	17	119	123	18	141	2.25%	1.79%	2.16%
Chesterfield	71	26	97	73	16	89	76	16	92	69	19	88	55	27	82	1.34%	1.66%	1.12%
Clarendon	22	4	26	20	11	31	21	8	29	18	13	31	11	15	26	0.36%	0.81%	0.45%
Colleton	33	1	34	33	2	35	31	2	33	24	4	28	23	0	23	0.56%	0.14%	0.48%
Darlington	48	10	58	35	2	37	30	7	37	37	10	47	40	11	51	0.74%	0.64%	0.72%
Dillon	24	12	36	23	14	37	26	14	40	16	12	28	22	5	27	0.43%	0.91%	0.53%
Dorchester	111	7	118	125	8	133	135	4	139	135	8	143	120	6	126	2.45%	0.53%	2.07%
Edgefield	9	0	9	8	0	8	8	1	9	7	1	8	9	0	9	0.16%	0.03%	0.14%
Fairfield	29	5	34	28	11	39	24	10	34	32	2	34	41	3	44	0.60%	0.50%	0.58%
Florence	92	16	108	77	11	88	89	13	102	75	11	86	66	21	87	1.56%	1.15%	1.48%
Georgetown	56	4	60	64	1	65	58	3	61	63	1	64	60	4	64	1.18%	0.21%	0.99%
Greenville	352	27	379	316	29	345	297	37	334	294	30	324	292	19	311	5.15%	2.03%	5.32%
Greenwood	32	15	47	33	74	107	27	66	93	24	54	78	33	42	75	1.59%	3.64%	1.26%
Hampton	5	2	7	8	3	11	2	2	4	1	1	2	1	0	1	0.19%	0.80%	0.08%
Horry	87	43	130	82	25	107	97	11	108	87	6	93	101	12	113	1.38%	1.36%	1.73%
Jasper	6	0	6	2	2	4	4	1	5	1	3	4	2	1	3	0.45%	0.29%	0.07%
Kershaw	60	52	112	63	39	102	63	44	107	71	54	125	84	50	134	1.01%	3.04%	1.82%
Lancaster	159	49	208	150	36	186	138	34	172	152	37	189	144	35	179	2.90%	3.05%	2.93%
Laurens	41	4	45	39	5	44	33	8	41	38	3	41	42	0	42	0.75%	0.32%	0.67%
Lee	11	2	13	10	0	10	14	3	17	7	3	10	4	1	5	0.18%	0.14%	0.17%
Lexington	268	92	360	257	90	347	264	91	355	249	106	355	241	27	268	5.00%	6.49%	5.29%
Marion	13	0	13	15	1	16	19	6	25	19	4	23	14	1	15	0.31%	0.19%	0.29%
Marlboro	3	0	3	1	0	1	1	0	1	1	2	3	2	2	4	0.03%	0.06%	0.04%
McCormick	23	4	27	29	2	31	37	5	42	24	7	31	24	3	27	0.54%	0.34%	0.50%
Newberry	17	7	24	20	8	28	17	9	26	23	3	26	26	9	35	0.40%	0.58%	0.44%
Oconee	66	4	70	56	5	61	50	4	54	51	2	53	40	4	44	1.03%	0.30%	0.89%
Orangeburg	67	10	77	59	8	67	63	19	82	60	2	62	54	6	60	1.18%	0.72%	1.09%
Pickens	55	4	59	49	3	52	67	2	69	62	5	67	63	6	69	1.16%	0.32%	0.99%
Richland	422	68	490	402	74	476	422	75	497	408	89	497	405	55	460	6.71%	4.98%	7.60%
Saluda	15	4	19	14	1	15	14	3	17	10	2	12	4	3	7	1.79%	1.04%	0.22%
Spartanburg	158	15	173	145	14	159	158	13	171	155	12	167	151	10	161	3.00%	1.02%	2.61%
Sumter	119	9	128	110	9	119	121	8	129	127	12	139	117	10	127	2.32%	0.77%	2.02%
Union	30	11	41	53	5	58	38	4	42	41	3	44	28	1	29	0.74%	0.38%	0.67%
Williamsburg	26	2	28	29	1	30	27	0	27	20	0	20	13	3	16	0.45%	0.10%	0.38%
York	1,170	276	1,446	1,223	319	1,542	1,112	263	1,375	1,128	333	1,461	1,200	321	1,521	22.79%	24.16%	23.06%
Total S.C.	4,514	950	5,464	4,483	980	5,463	4,450	872	5,322	4,379	1,017	5,396	4,352	804	5,156	86.66%	73.86%	84.15%
Out-of-State	605	241	846	590	269	859	554	278	832	534	319	853	590	336	926	11.23%	23.05%	13.55%
International	94	43	137	114	44	158	107	31	138	99	34	133	126	41	167	2.11%	3.08%	2.30%
Grand Total	5,213	1,234	6,447	5,187	1,293	6,480	5,111	1,181	6,292	5,012	1,370	6,382	5,068	1,181	6,249	100.0%	100.0%	100.0%

UNDERGRADUATE HEADCOUNT ENROLLMENT FALL 2004 - FALL 2008

COLLEGE / DEGREE PROGRAMS	2004	2005	2006	2007	2008	% OF 5 YEAR TOTAL	07 TO 08 % DIFF.
ARTS & SCIENCES	2,056	2,056	2,054	1,975	1,957	37.2%	-0.9%
Biology	345	320	338	320	332	6.1%	3.8%
Chemistry	45	73	86	87	121	1.5%	39.1%
English	142	164	153	137	168	2.8%	22.6%
Environmental Science (B.S.)	14	14	7	13	12	0.2%	-7.7%
Environmental Studies (B.A.)	14	10	15	19	16	0.3%	-15.8%
General Communication Disorders	59	56	72	65	52	1.1%	-20.0%
History	163	169	178	152	157	3.0%	3.3%
Human Nutrition	56	59	65	92	87	1.3%	-5.4%
Integrated MKTG Communication *	112	33	33	47	50	1.0%	6.4%
Mass Communication	71	73	72	71	58	1.3%	-18.3%
Mathematics (B.A.)	31	40	23	32	39	0.6%	21.9%
Mathematics (B.S.)	20	15	21	26	25	0.4%	-3.8%
Medical Technology	*	*	*	0	0	0.0%	N/A
Modern Languages	46	65	59	49	34	0.9%	-30.6%
Philosophy & Religious Studies	26	37	33	23	20	0.5%	-13.0%
Political Science	163	175	141	147	134	2.8%	-8.8%
Pre-Engineering	11	11	7	12	9	0.2%	-25.0%
Pre-Integrated Marketing	78	75	94	74	64	1.4%	-13.5%
Pre-Mass Communication	133	109	113	108	93	2.0%	-13.9%
Psychology	291	313	297	266	274	5.3%	3.0%
Science Communications	1	2	2	4	4	0.0%	0.0%
Social Work	100	97	92	99	102	1.8%	3.0%
Sociology	135	146	153	132	106	2.5%	-19.7%
BUSINESS ADMINISTRATION	1,103	1,107	1,157	1,186	1,272	21.4%	7.3%
Business Administration	884	897	939	923	935	16.9%	1.3%
Computer Science	77	76	78	74	78	1.4%	5.4%
Economics	7	8	17	21	27	0.3%	28.6%
Information Design**				14	38	0.2%	N/A
Integrated MKTG Communication *	34	33	33	47	50	0.7%	6.4%
Sport Manangement *	101	93	90	107	144	2.0%	34.6%
EDUCATION	994	969	943	945	948	17.7%	0.3%
Athletic Training ***					29	0.1%	N/A
Early Childhood Education	272	261	273	283	254	4.9%	-10.2%
Elementary Education	322	300	261	232	187	4.8%	-19.4%
Exercise Science ***					19	0.1%	N/A
Family & Consumer Science	83	92	89	69	70	1.5%	1.4%
Middle Level Education	*	19	40	43	48	0.6%	N/A
Physical Education	140	146	134	153	124	2.6%	-19.0%
Special Education	76	58	57	58	73	1.2%	25.9%
Sport Manangement *	101	93	89	107	144	2.0%	34.6%
VISUAL & PERFORMING ARTS	831	853	827	790	731	14.8%	-7.5%
Art (B.A.)	106	111	104	98	78	1.8%	-20.4%
Art (B.F.A.)	355	358	346	356	319	6.4%	-10.4%
Art History (B.A.)	23	26	24	24	29	0.5%	20.8%
Dance	77	72	76	59	56	1.3%	-5.1%
Music (B.A.)	41	50	51	33	41	0.8%	24.2%
Music Education (Choral)	40	41	44	34	33	0.7%	-2.9%
Music Education (Instrumental)	54	58	57	67	69	1.1%	3.0%
Music (Performance)	40	32	32	32	33	0.6%	3.1%
Theatre	95	105	93	87	73	1.7%	-16.1%
PRE-MAJOR	442	453	405	462	354	7.8%	-23.4%
New Start Undecided	2	1	1	112	1	0.4%	-99.1%
Pre-Business	13	9	6	11	8	0.2%	-27.3%
Pre-Education	4	4	3	3	5	0.1%	66.7%
Pre-Major	149	142	118	96	98	2.2%	2.1%
Pre-Nursing	34	17	6	0	0	0.2%	0.0%
Distance Learning	217	255	255	218	224	4.3%	2.8%
Non-Degree Transient	15	13	13	11	4	0.2%	-63.6%
Non-Degree Undergraduate	8	12	3	11	14	0.2%	27.3%

Note: Counts include double majors and students working toward two degrees.

*Interdisciplinary program

Program began in Fall 2007 *Program began in Fall 2008

**UNDERGRADUATE HEADCOUNT ENROLLMENT
SPRING 2005 - SPRING 2009**

COLLEGE / DEGREE PROGRAMS	2005	2006	2007	2008	2009	% OF 5 YEAR TOTAL	08 TO 09 % DIFF.
ARTS & SCIENCES	1849	1969	1,961	1,895	1,810	39.4%	-4.5%
Biology	296	300	308	295	277	6.1%	-6.1%
Chemistry	44	71	78	87	111	1.6%	27.6%
English	136	130	134	134	161	2.9%	20.1%
Environmental Science (B.S.)	7	9	9	15	18	0.2%	20.0%
Environmental Studies (B.A.)	12	15	15	21	15	0.3%	-28.6%
General Communication Disorders	62	65	65	64	50	1.3%	-21.9%
Gerontology (Cert.)	2	10	11	10	0	0.1%	-100.0%
History	139	166	167	148	148	3.2%	0.0%
Human Nutrition	48	61	69	80	80	1.4%	0.0%
Integrated Marketing Communication #	41	38	36	40	38	0.8%	-5.0%
Mass Communication	79	82	82	69	60	1.5%	-13.0%
Mathematics (B.A.)	29	38	39	31	34	0.7%	9.7%
Mathematics (B.S.)	22	16	20	26	22	0.4%	-15.4%
Modern Languages	44	65	54	49	36	1.0%	-26.5%
Philosophy & Religious Studies	24	38	35	25	20	0.6%	-20.0%
Political Science	155	159	138	139	123	3.0%	-11.5%
Pre-Engineering	10	4	4	9	4	0.1%	-55.6%
Pre-Integrated Marketing	64	90	80	83	69	1.6%	-16.9%
Pre-Mass Communication	105	82	77	87	72	1.8%	-17.2%
Psychology	284	287	290	262	276	5.8%	5.3%
Science Communications	2	2	2	3	6	0.1%	100.0%
Social Work	111	94	95	98	90	2.0%	-8.2%
Sociology	133	147	153	120	100	2.7%	-16.7%
BUSINESS ADMINISTRATION	1,038	1037	1,079	1,170	1,176	22.9%	0.5%
Business Administration	821	842	871	883	854	17.7%	-3.3%
Computer Science	70	62	71	77	70	1.5%	-9.1%
Economics	10	12	17	21	29	0.4%	38.1%
Integrated Marketing Communication #	41	38	36	40	38	0.8%	-5.0%
Sport Management #	96	83	84	125	141	2.2%	12.8%
Information Design				24	44	0.3%	83.3%
EDUCATION	921	898	886	877	906	18.6%	3.3%
Athletic Training *					37		
Early Childhood Education	252	253	259	243	239	5.2%	-1.6%
Elementary Education	285	249	235	206	171	4.8%	-17.0%
Exercise Science *					28		
Family & Consumer Science (HEED)	97	104	80	63	62	1.7%	-1.6%
Middle Level Education		18	46	44	49	0.7%	11.4%
Physical Education	127	136	131	142	109	2.7%	-23.2%
Special Education	64	55	51	54	70	1.2%	29.6%
Sport Management #	96	83	84	125	141	2.2%	12.8%
VISUAL & PERFORMING ARTS	764	777	782	725	683	15.5%	-5.8%
Art (B.A.)	102	105	93	89	74	1.9%	-16.9%
Art (B.F.A.)	322	334	327	320	292	6.6%	-8.8%
Art History (B.A.)	22	25	24	24	36	0.5%	50.0%
Dance	65	66	69	51	50	1.3%	-2.0%
Music (B.A.)	37	41	56	29	35	0.8%	20.7%
Music Education (Choral)	33	33	36	30	32	0.7%	6.7%
Music Education (Instrumental)	51	49	58	69	71	1.2%	2.9%
Music (Performance)	37	28	27	31	25	0.6%	-19.4%
Theatre	95	96	92	82	68	1.8%	-17.1%
PRE-MAJOR	146	243	261	236	251	4.7%	6.4%
New Start Undecided	1	1	0	1	0	0.0%	-100.0%
Pre-Business	13	5	9	5	4	0.1%	-20.0%
Pre-Education	1	2	2	0	3	0.0%	100.0%
Pre-Major	107	72	87	79	55	1.7%	-30.4%
Undeclared		152	159	151	189	2.7%	25.2%
Pre-Nursing	24	11	4	0	0	0.2%	0.0%
Distance Learning	151					0.6%	0.0%
Non-Degree Transient	62	41	45	53	44	1.0%	-17.0%
Non-Degree Undergraduate	15	7	9	8	13	0.2%	62.5%

Note: Counts include double majors and students working toward two degrees.

* New program began in Fall 2008 # Interdisciplinary program

**GRADUATE HEADCOUNT ENROLLMENT
FALL 2004 - FALL 2008**

COLLEGE / DEGREE PROGRAMS	2004	2005	2006	2007	2008	% OF 5-YEAR TOTAL	07 TO 08 % DIFF.
ARTS AND SCIENCES	124	131	148	196	212	14.3%	8.2%
Biology	15	21	12	16	15	1.4%	-6.3%
English	14	16	15	17	17	1.4%	0.0%
History	11	13	8	6	13	0.9%	116.7%
Human Nutrition	27	27	25	32	36	2.6%	12.5%
Human Nutrition - Certification	1	3		1	1	0.1%	0.0%
Liberal Arts	20	19	20	23	18	1.8%	-21.7%
Mathematics	6	2	***	***	***	0.1%	N/A
S.S.P./ M.S.School Psychology	26	27	30	31	32	2.6%	3.2%
MSW Social Work	*	*	32	63	71		N/A
Spanish	4	3	6	7	9	0.5%	28.6%
BUSINESS ADMINISTRATION	236	233	196	192	196	18.6%	2.1%
Business Administration	206	201	162	158	171	15.8%	8.2%
Executive MBA	22	26	30	32	25	2.4%	-21.9%
Software Development	8	6	4	2	0	0.4%	-100.0%
EDUCATION	301	294	299	275	303	26.0%	10.2%
Counseling & Dev (Guidance)	45	46	39	38	39	3.7%	2.6%
Curriculum and Instruction (Med)	21	27	36	33	33	2.6%	0.0%
Educational Leadership (MED)	84	67	79	70	88	6.8%	25.7%
Elementary Education ##	3					0.1%	N/A
Middle Level Education	16	32	30	19	10	1.9%	-47.4%
Physical Education	12	11	18	19	22	1.4%	15.8%
Reading	55	41	18	19	21	2.7%	10.5%
Secondary Education (MAT)	****	****	****	****	****	3.7%	N/A
Biology	3	2	4	2	3	0.2%	50.0%
Business	10	11	5	4	5	0.6%	25.0%
English	14	11	7	9	10	0.9%	11.1%
Family Consumer Science	0	2	1	2	1	0.1%	-50.0%
French	0	2	1	1	0	0.1%	-100.0%
Mathematics	0	2	4	6	5	0.3%	-16.7%
Social Studies	12	12	22	17	14	1.4%	-17.6%
Spanish	1	1		2	2	0.1%	0.0%
Secondary Education (MEd) ##	1					0.0%	N/A
Special Education	14	15	21	18	26	1.7%	44.4%
Teacher Education Art K-12	5	5	5	5	7	0.5%	40.0%
Teacher Education Dance K-12	0	0	0	0	0	0.0%	0.0%
Teacher Education Music K-12	4	3	4	5	6	0.4%	20.0%
Teacher Education Physical Ed. K-12	1	4	5	6	11	0.5%	83.3%
VISUAL & PERFORMING ARTS	56	56	59	64	60	5.2%	-6.3%
Art Administration	17	22	24	19	14	1.7%	-26.3%
Art Education	7	5	9	9	7	0.7%	-22.2%
Conducting	11	11	6	10	12	0.9%	20.0%
Fine Arts	11	9	5	5	6	0.6%	20.0%
Music Education	2	3	2	6	8	0.4%	33.3%
Music Performance	8	6	13	15	13	1.0%	-13.3%
UNDESIGNATED/UNASSIGNED	212	282	488	643	410	35.9%	-36.2%
ACRT	3	2	0	7	8	0.4%	14.3%
GNDG	202	273	456	595	364	33.4%	-38.8%
ICRT	2	5	5	9	23	0.8%	155.6%
OBRG	*	*	15	0	0	0.3%	N/A
RCRT	1	1	1	4	2	0.2%	-50.0%
TRNS	4	1	11	2	1	0.3%	-50.0%
TESL				26	12	0.7%	-53.8%
TOTAL	929	996	1,190	1,370	1,181	100.0%	-13.8%

* New program

** MEd EDAS changed to MEd EDLD in Fall 1999

*** Program discontinued

**** Concentrations broken out into separate program options

ELEM (MED) & SCED (MED) changed to options under Curriculum and Instruction (MEd)

5,666 = 5-YEAR TOTAL

GRADUATE HEADCOUNT ENROLLMENT Spring 2005 - Spring 2009

COLLEGE / DEGREE PROGRAMS	2005	2006	2007	2008	2009	% OF 5-YEAR TOTAL	08 TO 09 % DIFF.
ARTS AND SCIENCES	131	131	157	193	212	17.3%	9.8%
Biology	21	18	15	12	13	1.7%	8.3%
English	16	15	11	17	16	1.6%	-5.9%
History	13	11	10	7	11	1.1%	57.1%
Human Nutrition	27	32	32	42	49	3.8%	16.7%
Human Nutrition - Certification	3	3	2	0	2	0.2%	100.0%
Liberal Arts	19	20	20	18	12	1.9%	-33.3%
Mathematics	2***		***	***	***	0.0%	0.0%
School Psychology	27	28	30	30	32	3.1%	6.7%
Social Work###			31	59	67	3.3%	13.6%
Spanish	3	4	6	8	10	0.7%	25.0%
BUSINESS ADMINISTRATION	233	193	179	195	190	20.8%	-2.6%
Business Administration	201	168	143	161	168	17.6%	4.3%
Executive MBA	26	20	29	32	22	2.7%	-31.3%
Software Project Mgmt --Certification			2	0	0	0.0%	0.0%
Software Development	6	5	5	2	0	0.4%	-100.0%
EDUCATION	294	255	285	262	319	29.7%	21.8%
Counseling & Dev (Guidance)	46	38	37	37	39	4.1%	5.4%
Curriculum and Instruction (Med)	27	28	29	26	34	3.0%	30.8%
Early Childhood Education (MAT)					19	0.4%	100.0%
Educational Administration (EdS)						0.0%	0.0%
Educational Leadership	67	59	73	66	90	7.4%	36.4%
Elementary Education ##						0.0%	0.0%
Middle Level Education	32	23	30	16	5	2.2%	-68.8%
Physical Education	11	14	22	18	24	1.9%	33.3%
Reading	41	25	19	18	16	2.5%	-11.1%
Secondary Education (MAT)	****	****	****	****	****		0.0%
Biology	2	4	3	2	3	0.3%	50.0%
Business	11	6	3	6	5	0.7%	-16.7%
English	11	8	6	6	10	0.9%	66.7%
Family Consumer Science	2	2	1	2	1	0.2%	-50.0%
French	2	3	1	0	0	0.1%	0.0%
Mathematics	2	3	6	5	5	0.4%	0.0%
Social Studies	12	16	21	15	13	1.6%	-13.3%
Spanish	1	0	0	2	2	0.1%	0.0%
Secondary Education (MEd)						0.0%	0.0%
Special Education	15	14	20	26	25	2.1%	-3.8%
Teacher Education Art K-12	5	5	5	6	7	0.6%	16.7%
Teacher Education Dance K-12						0.0%	0.0%
Teacher Education Music K-12	3	1	3	5	6	0.4%	20.0%
Teacher Education Physical Ed. K-12	4	6	6	6	15	0.8%	150.0%
VISUAL & PERFORMING ARTS	56	57	63	63	53	6.1%	-15.9%
Art Administration	22	19	23	17	13	2.0%	-23.5%
Art Education	5	6	9	10	6	0.8%	-40.0%
Conducting	11	7	7	8	10	0.9%	25.0%
Fine Arts	9	8	6	6	5	0.7%	-16.7%
Music Education	3	6	6	6	7	0.6%	16.7%
Music Performance	6	11	12	16	12	1.2%	-25.0%
UNDESIGNATED/UNASSIGNED	282	255	124	294	293	26.2%	-0.3%
ACRT	2	3	6	4	33	1.0%	725.0%
GNDG	273	242	105	259	227	23.2%	-12.4%
ICRT	5	6	8	10	7	0.8%	-30.0%
RCRT	1	0	4	1	2	0.2%	100.0%
TRNS	1	4	1	2	2	0.2%	0.0%
TESL				18	22	0.8%	22.2%
Degree Programs (GS Class)						0.0%	0.0%
TOTAL	996	891	808	1,007	1,067	100.0%	6.0%

* New program

** MEd EDAS changed to MEd EDDL in Fall 1999

Started Fall 2006

*** Program discontinued

**** Concentrations broken out into separate program options

ELEM (MEd) & SCED (MEd) changed to options under Curriculum and Instruction (MEd)

NEW START

HEADCOUNT ENROLLMENT AND CREDIT HOUR PRODUCTION

CATEGORY	2006			2007			2008		
	Spring	Summer	Fall	Spring	Summer	Fall	Spring	Summer	Fall
Headcount	438	177	431	417	147	406	404	159	450
CHP	4,656	955	4,566	4,325	872	4,170	4,101	909	4,671

HEADCOUNT ENROLLMENT BY STATUS AND CLASS

STATUS	2006			2007			2008		
	Spring	Summer	Fall	Spring	Summer	Fall	Spring	Summer	Fall
New Freshmen	2	0	4	0	0	0	0	0	1
New Transfer	33	13	49	34	6	57	38	7	70
Readmit	32	25	20	44	18	55	39	17	67
Continuing	361	133	334	331	120	283	324	131	297
Other	10	6	24	8	3	11	3	4	15
TOTAL	438	177	431	417	147	406	404	159	450

CLASS	2006			2007			2008		
	Spring	Summer	Fall	Spring	Summer	Fall	Spring	Summer	Fall
Freshman	26	6	33	19	8	28	27	1	24
Sophomore	61	12	54	55	15	63	52	15	69
Junior	115	31	94	106	34	89	104	38	121
Senior	225	123	235	220	85	209	208	98	215
Undergrad Special	11	5	15	17	5	17	13	7	21
Grad Degree Seeking	0	0	0	0	0	0	0	0	0
Grad Conditional	0	0	0	0	0	0	0	0	0
Grad Special	0	0	0	0	0	0	0	0	0
TOTAL	438	177	431	417	147	406	404	159	450

HEADCOUNT ENROLLMENT BY ETHNIC CATEGORY AND GENDER

ETHNIC CATEGORY	2006			2007			2008		
	Spring	Summer	Fall	Spring	Summer	Fall	Spring	Summer	Fall
Black, non-Hispanic	131	48	117	113	41	109	111	42	130
White, non-Hispanic	293	122	301	288	98	279	271	104	296
American Indian/Alaskan	3	3	3	1	2	2	5	2	6
Asian/Pacific Islander	5	2	4	5	2	6	8	5	8
International	0	0	0	0	0	1	0	0	0
Hispanic	6	2	6	10	4	9	9	6	10
Unknown	0	0	0	0	0	0	0	0	0
Total	438	177	431	417	147	406	404	159	450

GENDER	2006			2007			2008		
	Spring	Summer	Fall	Spring	Summer	Fall	Spring	Summer	Fall
Male	144	62	156	139	49	141	138	57	153
Female	294	115	275	278	98	265	266	102	297
Total	438	177	431	417	147	406	404	159	450

NOTE: The New Start program is a service/information program for adults age 25 and older who are beginning or continuing their education at the undergraduate level.

**Ratio of FTE Students to FTE Teaching Faculty
FALL 2004 - FALL 2008**

(Performance Funding Indicator 3A)

	FALL 2004	FALL 2005	FALL 2006	FALL 2007	FALL 2008
Credit Hour Production	80,292	80,340	79,630	78,570	78,320
Undergraduate	73,924	73,547	73,391	71,225	71,502
Graduate	6,368	6,793	6,239	7,345	6,818
FTE Students*	5,459	5,469	5,413	5,360	5,335
Undergraduate	4,928	4,903	4,893	4,748	4,767
Graduate	531	566	520	612	568
FTE Teaching Faculty**	369	386	362	374	354
FTE Students/FTE Faculty	14.8	14.2	15.0	14.3	15.1

* FTE Students = CHP divided by 15 for undergraduates & 12 for graduates.

** FTE Teaching Faculty=Headcount FT Instructional Faculty(who teach at least 3 hrs Fall) and FTE of Part-time faculty.

CREDIT HOUR PRODUCTION BY DEPARTMENT

FALL 2005-2008

DEPARTMENT	FALL 2005		FALL 2006		FALL 2007		FALL 2008		07 TO 08 % DIFF.	
	UG	G	UG	G	UG	G	UG	G	UG	G
Arts and Sciences	40,339	1,205	40,051	1,551	39,364	1,929	38,549	2,090	-2.1%	8.3%
Biology	4,222	177	4,073	124	3,791	115	3,960	136	4.5%	18.3%
BIOL	4,218	177	3,886	116	3,784	115	3,866	132	2.2%	14.8%
SCIE	4	0	187	8	7	0	94	4	1242.9%	100.0%
Chemistry	2,691	0	2,802	0	3,208	8	3,267	8	1.8%	0.0%
CHEM	1,151	0	1,429	0	1,359	8	1,696	8	24.8%	0.0%
ENVS	60	0	0	0	79	0	0	0	-100.0%	0.0%
GEOL	802	0	597	0	962	0	1,009	0	4.9%	0.0%
PHSC	0	0	0	0	0	0	0	0	0.0%	0.0%
PHYS	678	0	776	0	808	0	562	0	-30.4%	0.0%
English	6,914	160	5,934	165	6,442	175	5,038	197	-21.8%	12.6%
CRTW	1,314	0	1,218	0	1,338	0	813	0	-39.2%	0.0%
ENGL	1,608	120	1,167	123	1,116	129	999	138	-10.5%	7.0%
ENGE	43	16	47	12	43	4	65	20	51.2%	400.0%
SPCH	691	0	0	0	678	0	0	0	-100.0%	0.0%
WRIT	3,258	24	3,502	30	3,267	42	3,161	39	-3.2%	-7.1%
History	3,679	107	3,444	152	2,581	97	2,581	160	0.0%	64.9%
HIST	3,643	99	3,414	108	2,535	69	2,518	144	-0.7%	108.7%
SCST	36	8	30	44	46	28	63	16	37.0%	-42.9%
Human Nutrition	1,509	105	1,454	132	1,901	165	2,169	198	14.1%	20.0%
NUTR	1,188	105	1,148	120	1,412	153	1,470	192	4.1%	25.5%
GEOG	321	0	306	12	489	12	699	6	42.9%	-50.0%
Mass Communication	1,390	0	1,429	0	1,284	0	1,265	0	-1.5%	0.0%
MCOM	1,318	0	1,312	0	1,233	0	1,196	0	-3.0%	0.0%
IMCO	72	0	117	0	51	0	69	0	35.3%	0.0%
Mathematics	4,682	46	4,867	34	5,089	39	4,808	50	-5.5%	28.2%
MAED	76	4	86	4	59	0	59	11	0.0%	100.0%
MATH	2,233	42	2,288	30	2,705	39	2,502	39	-7.5%	0.0%
CTQR	2,373	0	2,493	0	2,325	0	2,247	0	-3.4%	0.0%
Modern & Classical Lang.	3,947	49	3,834	37	3,696	45	3,490	55	-5.6%	22.2%
CHIN	0	0	56	0	32	0	36	0	12.5%	0.0%
FREN	727	3	608	3	545	0	510	0	-6.4%	0.0%
GERM	183	0	251	0	265	0	226	0	-14.7%	0.0%
ITAL	176	0	136	0	172	0	136	0	-20.9%	0.0%
JAPN	80	8	72	0	0	0	0	0	0.0%	0.0%
LATN	32	0	64	0	88	0	0	0	-100.0%	0.0%
MLAN	8	8	4	4	24	0	72	4	200.0%	100.0%
SPAN	2,741	30	2,643	30	2,570	45	2,510	51	-2.3%	13.3%
Philosophy & Religion	1,350	0	1,371	0	1,164	9	1,293	3	11.1%	-66.7%
PHIL	600	0	570	0	576	9	576	3	0.0%	-66.7%
RELG	750	0	801	0	588	0	717	0	21.9%	0.0%
Political Science	2,484	21	2,250	12	2,185	12	2,161	3	-1.1%	-75.0%
AAMS	93	0	108	0	123	0	141	0	14.6%	0.0%
PLSC	2,391	21	2,142	12	2,062	12	2,020	3	-2.0%	-75.0%
Psychology	2,932	459	3,151	463	3,133	434	3,304	440	5.5%	1.4%
PSYC	2,932	459	3,151	463	3,133	434	3,304	440	5.5%	1.4%
Sociology	3,807	3	3,959	21	3,483	29	3,462	3	-0.6%	-89.7%
ANTH	1,206	0	1,248	0	1,269	0	1,215	0	-4.3%	0.0%
GRNT	153	0	117	0	11	0	57	0	418.2%	0.0%
SOCL	2,352	3	2,489	21	2,119	29	2,115	3	-0.2%	-89.7%
WMST	96	0	105	0	84	0	75	0	-10.7%	0.0%
Social Work	732	12	664	354	729	753	721	789	-1.1%	4.8%
SCWK	732	12	664	354	729	753	721	789	-1.1%	4.8%
Speech	691	0	807	0	678	0	976	0	44.0%	0.0%
SPCH	691	0	807	0	678	0	976	0	44.0%	0.0%
Other	0	66	12	57	0	48	54	48	100.0%	0.0%
INAS	0	0	12	0	0	0	54	0	100.0%	0.0%
LART	0	66	0	57	0	48	0	48	0.0%	0.0%

CREDIT HOUR PRODUCTION BY DEPARTMENT

FALL 2005-2008

DEPARTMENT	FALL 2005		FALL 2006		FALL 2007		FALL 2008		07 TO 08 % DIFF.	
	UG	G	UG	G	UG	G	UG	G	UG	G
Business Admin.	11,080	1,575	12,110	1,380	11,464	1,440	12,238	1,386	6.7%	-3.8%
Acct, Finance, & Econ.	3,864	426	4,059	465	3,792	456	4,089	348	7.8%	-23.7%
ACCT	1,434	162	1,314	159	1,506	237	1,485	156	-1.4%	-34.2%
ECON	1,620	87	1,923	66	1,635	63	1,815	42	11.0%	-33.3%
FINC	810	177	822	240	651	156	789	150	21.2%	-3.8%
Com. Sci. & Quan. Meth.	2,605	111	2,470	81	2,379	126	2,659	120	11.7%	-4.8%
CSCI	1,735	39	1,603	30	1,578	18	1,837	12	16.4%	-33.3%
QMTH	870	72	867	51	801	108	822	108	2.6%	0.0%
Management & Mktg.	4,611	1,038	5,581	834	5,293	858	5,490	918	3.7%	7.0%
BADM	1,224	366	1,326	336	1,269	432	1,245	378	-1.9%	-12.5%
HCMT	0	0	228	0	306	0	342	0	11.8%	0.0%
ENTR			138	0	123	0	138	0	12.2%	
IMCO	99	0	117	0	51	0	69	0	35.3%	0.0%
MGMT	2,310	579	2,286	423	2,103	381	2,289	444	8.8%	16.5%
MKTG	978	93	1,152	75	1,077	45	1,050	96	-2.5%	113.3%
SPMA	0	0	334	0	364	0	426	0	17.0%	0.0%
Education	8,998	2,981	9,342	3,291	8,655	3,521	8,576	2,872	-0.9%	-18.4%
Center for Pedagogy	3,792	1,095	3,792	978	3,702	1,120	3,521	1,152	-4.9%	2.9%
EDUC	3,792	564	3,792	564	3,702	577	3,521	609	-4.9%	5.5%
EDLD	0	531	0	414	0	543	0	543	0.0%	0.0%
Curriculum & Inst.	2,421	742	2,578	708	1,933	722	2,028	685	4.9%	-5.1%
CSDV	0	342	0	312	0	303	0	315	0.0%	4.0%
ECED	552	0	521	0	548	0	587	0	7.1%	0.0%
EDCI	180	171	300	198	227	114	212	99	-6.6%	-13.2%
ELEM	640	0	583	0	389	0	328	0	-15.7%	0.0%
FACS			351	0	170	0	225	0	32.4%	
READ	507	75	484	54	411	153	439	81	6.8%	-47.1%
SCED	0	12	60	21	54	30	27	15	-50.0%	-50.0%
SPED	263	123	267	117	134	120	210	165	56.7%	37.5%
VCED	279	19	12	6	0	2	0	10	0.0%	400.0%
Physical Education	2,782	130	2,924	138	3,017	167	3,027	234	0.3%	40.1%
HLTH	609	18	634	24	662	15	652	45	-1.5%	200.0%
PHED	1,773	112	1,967	114	1,991	152	1,949	189	-2.1%	24.3%
SPMA	400	0	323	0	364	0	426	0	17.0%	0.0%
Professional Development	3	1,014	48	1,467	3	1,512	0	801	-100.0%	-47.0%
WPDC	3	1,014	48	1,467	3	1,512	0	801	-100.0%	-47.0%
Visual & Perf. Arts	9,518	418	9,254	370	8,580	432	7,920	470	-7.7%	8.8%
Art	4,898	105	4,625	96	4,359	61	3,375	106	-22.6%	73.8%
ARTE	182	22	153	33	153	19	133	43	-13.1%	126.3%
ARTH	1,524	12	1,401	6	1,360	6	1,284	15	-5.6%	150.0%
ARTS	2,634	71	2,610	57	2,376	36	1,566	48	-34.1%	33.3%
ARTT	558	0	461	0	470	0	392	0	-16.6%	0.0%
Design	1,113	0	1,214	0	1,466	0	1,844	0	25.8%	0.0%
INDS	578	0	679	0	843	0	756	0	-10.3%	0.0%
VCOM	535	0	535	0	623	0	1,088	0	74.6%	0.0%
CVPA	0	154	0	154	0	129	36	97	100.0%	-24.8%
ARTA	0	154	0	154	0	126	0	91	0.0%	-27.8%
VPAS	0	0	0	0	0	3	36	6	100.0%	100.0%
Dance/Theatre	2,147	0	2,011	0	1,917	0	2,161	0	12.7%	0.0%
DANA	384	0	326	0	339	0	408	0	20.4%	0.0%
DANT	449	0	401	0	308	0	375	0	21.8%	0.0%
DCED					46		99	0	115.2%	
THED	47	0	0	0	57	0	52	0	-8.8%	0.0%
THRA	646	0	789	0	732	0	750	0	2.5%	0.0%
THRT	621	0	495	0	435	0	477	0	9.7%	0.0%
Music	2,473	159	2,618	120	2,304	242	2,348	267	1.9%	10.3%
MUSA	895	75	919	39	902	107	934	98	3.5%	-8.4%
MUST	1,578	84	1,699	81	1,402	135	1,414	169	0.9%	25.2%
University College	1,679	0	2,060	0	2,610	0	2,792	0	7.0%	0.0%
ACAD	1,009	0	1,023	0	1,070	0	1,129	0	5.5%	0.0%
GNEB	654	0	1,002	0	1,512	0	1,626	0	7.5%	0.0%
HONR	16	0	35	0	28	0	37	0	32.1%	0.0%

NOTE: Credit Hours are by Course Level

CREDIT HOUR PRODUCTION BY DEPARTMENT
SPRING 2005 - SPRING 2009

UNIT/DEPARTMENT	SPRING 2005		SPRING 2006		SPRING 2007		SPRING 2008		SPRING 2009		08 TO 09 % DIFF.	
	UG	G	UG	G	UG	G	UG	G	UG	G	UG	G
Arts and Sciences	34,756	1,059	34,705	1,089	37,912	1,402	37,041	1,772	36,998	1,902	-0.1%	7.3%
Biology	4,086	164	4,080	153	3,889	132	3,757	109	3,681	106	-2.0%	-2.8%
BIOL	4,086	164	4,080	153	3,889	132	3,757	109	3,681	106	-2.0%	-2.8%
SCIE											0.0%	0.0%
Chemistry	2,441	16	2,714	6	2,417	15	2,887	30	3,163	21	9.6%	-30.0%
CHEM	1,011	13	1,164	6	1,069	15	1,259	18	1,550	21	23.1%	16.7%
ENVS	87		114		99		108	12	111		2.8%	-100.0%
GEOL	614	3	686		490		711		644		-9.4%	0.0%
PHSC												0.0%
PHYS	729		750		759		809		858		6.1%	0.0%
English	3,976	210	3,743	141	3,863	132	3,838	162	4,094	186	6.7%	14.8%
CRTW	348		1,095		1,371		1,530		1,806		18.0%	0.0%
ENGL	2,172	135	1,441	99	1,416	93	1,206	129	1,248	132	3.5%	2.3%
ENGE	42	9	39	12	42	15	66	15	69	15	4.5%	0.0%
WRIT	1,414	66	1,168	30	1,034	24	1,036	18	971	39	-6.3%	116.7%
History	2,977	99	2,502	99	2,706	150	2,219	93	2,151	147	-3.1%	58.1%
HIST	2,977	99	2,502	99	2,706	150	2,219	93	2,151	147	-3.1%	58.1%
Human Nutrition	1,304	120	1,478	185	1,811	149	1,905	141	1,922	188	0.9%	33.3%
NUTR	1,064	120	1,076	185	1,295	149	1,395	141	1,286	188	-7.8%	33.3%
GEOG	240		402		516		510		636		24.7%	0.0%
Mass Communication	1,411	6	1,328	0	1,357	0	1,380	0	1,335	0	-3.3%	0.0%
MCOM	1,372	6	1,274		1,318		1,265		1,227		-3.0%	0.0%
IMCO*	39		54		39		115		108		-6.1%	0.0%
Mathematics	2,498	33	3,408	3	3,572	9	3,771	12	3,740	9	-0.8%	-25.0%
CTQR	858		1,011		1,116		1,185		1,002		-15.4%	0.0%
MAED/MPDC	62	3	60	3	74	6	23	6	47	6	104.3%	0.0%
MATH	2,436	30	2,337		2,382	3	2,563	6	2,691	3	5.0%	-50.0%
Modern & Classical Lang.	3,898	18	3,880	48	3,570	30	3,086	57	2,917	33	-5.5%	-42.1%
CHIN	8		64		44		28		24		-14.3%	0.0%
FREN	688	3	677	6	585		471	3	553		17.4%	-100.0%
GERM	186		165		233		203		181		-10.8%	0.0%
ITAL	168		84		64		108		48		-55.6%	0.0%
JAPN	40		72		60						0.0%	0.0%
LATN	36		40		32						0.0%	0.0%
MLAN	3								12		100.0%	0.0%
SPAN	2,769	15	2,778	42	2,552	30	2,276	54	2,099	33	-7.8%	-38.9%
Philosophy & Religion	1,023	0	1,326	9	1,353	6	1,071	0	1,110	6	3.6%	100.0%
PHIL	669	3	627	6	729		519		510		-1.7%	0.0%
RELG	354		699	3	624	6	552	0	600	6	8.7%	100.0%
Political Science	2,601	15	2,138	9	1,962	18	1,798	7	1,764	6	-1.9%	-14.3%
AAMS	90		117		105		90		162		80.0%	0.0%
PLSC	2,601	15	2,138	9	1,962	18	1,798	7	1,764	6	-1.9%	-14.3%
Psychology	3,007	339	2,729	358	2,819	326	3,080	456	2,994	465	-2.8%	2.0%
PSYC	3,007	339	2,729	358	2,819	326	3,080	456	2,994	465	-2.8%	2.0%
Sociology	3,727	0	3,716	6	3,903	6	3,347	15	3,355	9	0.2%	-40.0%
ANTH	1,298		1,358		1,339		1,314		1,233		-6.2%	0.0%
GRNT	36		156		159		84	3	102	3	21.4%	0.0%
SOCL	2,393		2,172	3	2,402	6	1,919	12	2,014	6	5.0%	-50.0%
WMST			30	3	3		30		6		-80.0%	0.0%
Social Work	1,015	6	884	6	805	384	740	687	726	693	-1.9%	0.9%
CMVS	54		45		45		60				-100.0%	0.0%
SCWK	961	6	839	6	760	384	680	687	726	693	6.8%	0.9%
Speech	771	0	758	0	765	0	932	0	1,086	0	16.5%	0.0%
SPCH	771		758		765		932		1,086		16.5%	0.0%
Other	21	33	21	66	24	45	102	3	0	33	-100.0%	1000.0%
INAS	21		21		24		102				-100.0%	0.0%
LART		33		66		45		3		33	0.0%	1000.0%
University College	2,538	0	2,579	0	3,096	0	3,128	0	2,960	0	-5.4%	0.0%
ACAD	65		22		25		114		87		-23.7%	0.0%
GNED/HMXP	2538		2508		3030		2931		2811		-4.1%	0.0%
HONR	62		49		41		83		62		-25.3%	0.0%
LEAD							49		57			0

*Interdisciplinary Courses

NOTE: Credit Hours are by course level.

CREDIT HOUR PRODUCTION BY DEPARTMENT SPRING 2005 - SPRING 2009

UNIT/DEPARTMENT	SPRING 2005		SPRING 2006		SPRING 2007		SPRING 2008		SPRING 2009		08 TO 09 % DIFF.	
	UG	G	UG	G	UG	G	UG	G	UG	G	UG	G
Business Administration	11,005	1,719	11,465	1,404	11,650	1,371	11,566	1,551	11,979	1,371	3.6%	-11.6%
Account, Finance, & Econ.	3,771	522	3,888	435	3,948	360	3,804	453	4,038	435	6.2%	-4.0%
ACCT	1,461	264	1,422	252	1,380	213	1,296	303	1,455	261	12.3%	-13.9%
ECON	1,611	84	1,707	51	1,848	42	1,683	33	1,791	54	6.4%	63.6%
FINC	699	174	759	132	720	105	825	117	792	120	-4.0%	2.6%
Com. Sci. & Quan. Meth.	2,383	108	2,360	63	2,477	117	2,694	102	2,661	78	-1.2%	-23.5%
CSCI	1,492	24	1,475	18	1,553	15	1,755	9	1,646	6	-6.2%	-33.3%
INFD							114		172		50.9%	0.0%
QMTH	891	84	885	45	924	102	825	93	843	72	2.2%	-22.6%
Management & Marketing	4,851	1,089	5,217	906	5,225	894	5,068	996	5,280	858	4.2%	-13.9%
BADM	1,115	456	957	306	1,020	375	1,017	438	1,093	324	7.5%	-26.0%
ENTR			162		177		165		237		43.6%	0.0%
HCMT			168		219		246		318		29.3%	0.0%
HLAD/HLSM	141										0.0%	0.0%
IMCO*	39		54		39		115				-100.0%	0.0%
MGMT	2,277	480	2,478	474	2,409	429	2,187	459	2,301	429	5.2%	-6.5%
MKTG	1,074	153	1,179	126	1,131	90	1,002	99	1,026	105	2.4%	6.1%
SPMA*	205		219		230		336		305		-9.2%	0.0%
Education	9,016	2,025	8,954	1,848	8,640	1,758	8,602	2,073	8,613	2,632	0.1%	27.0%
Center for Pedagogy	3,756	897	3,623	990	3,532	876	3,425	1,080	3,498	1,303	2.1%	20.6%
EDUC	3,756	501	3,623	567	3,532	432	3,425	534	3,498	814	2.1%	52.4%
EDLD		396		423		444		546		489	0.0%	-10.4%
Curriculum & Instruction	2,290	552	2,414	381	2,400	465	2,050	402	2,004	507	-2.2%	26.1%
CSDV		396		348		339		327		306	0.0%	-6.4%
EDCI	267	141	333	120	306	114	357	57	228	60	-36.1%	5.3%
ECED	285	30	291		360	21	244		217	60	-11.1%	100.0%
ELEM	394		324		364	24	306		321	51	4.9%	100.0%
FACS			564	3	521	3	345		414		20.0%	0.0%
READ	696	249	665	156	663	111	603	222	602	249	-0.2%	12.2%
SPED	225	126	237	99	186	192	195	123	222	87	13.8%	-29.3%
VCED	423	6		3							0.0%	0.0%
Physical Education	2,970	90	2,917	123	2,708	258	3,127	162	3,111	309	-0.5%	90.7%
HLTH/WELL	576	21	674	27	580	111	481	48	524	9	8.9%	-81.3%
PHED	2,189	69	2,024	96	1,898	147	2,310	114	2,282	300	-1.2%	163.2%
SPMA*	205		219		230		336		305		-9.2%	0.0%
Other		486		354		159		429		513	0.0%	19.6%
WSDT/WPDC		486		354		159		429		513	0.0%	19.6%
Visual & Performing Arts	10,722	444	10,648	379	11,296	405	12,224	493	11,639	367	-4.8%	-25.6%
Art*	6,375	274	6,488	198	6,927	241	6,459	234	6,224	161	-3.6%	-31.2%
ARTA		151		123		154		112		77	0.0%	-31.3%
ARTE	225	33	156	6	165	36	147	27	144	27	-2.0%	0.0%
ARTH	1,158	15	1,182	6	1,347	9	1,284	39	1,233	39	-4.0%	0.0%
ARTS	2,295	75	2,177	63	2,103	42	2,013	56	1,618	18	-19.6%	-67.9%
ARTT	345		339		288		249		213		-14.5%	0.0%
Design*	1,176	0	1,317	0	1,512	0	1,383	0	1,508	0	9.0%	0.0%
VCOM	516		510		516		492		912		85.4%	0.0%
INDS	660		807		996		891		596		-33.1%	0.0%
Dance/Theatre	2,076	3	1,884		2,007		2,200		1,749		-20.5%	0.0%
DANA	284		244		287		292		258		-11.6%	0.0%
DANT	378		400		442		453		451		-0.4%	0.0%
DECD					74		76		60		-21.1%	0.0%
THED	48		55		45		49		80		63.3%	0.0%
THRA	727		700		664		752		527		-29.9%	0.0%
THRT	639	3	485		495		578		373		-35.5%	0.0%
Music	2,271	167	2,276	178	2,362	164	2,182	259	2,158	206	-1.1%	-20.5%
MUSA	847	73	868	66	916	61	835	89	809	83	-3.1%	-6.7%
MUST	1,424	94	1,408	112	1,446	103	1,347	170	1,349	123	0.1%	-27.6%
Other	0	0	0	3	0	0	0	0	0	0	0.0%	0.0%
VPAS				3					69		100.0%	0.0%

NOTE: Credit Hours are by course level.

**CREDIT HOUR PRODUCTION BY DEPARTMENT BY COURSE LEVEL
SUMMER 2006 - SUMMER 2009**

DEPARTMENT	SUM 2006		SUM 2007		SUM 2008		SUM 2009		08 TO 09 % DIFF.	
	UG	G	UG	G	UG	G	UG	G	UG	G
Unit/Department	UG	G	UG	G	UG	G	UG	G	UG	G
Arts and Sciences	3,703	777	4,008	755	4,251	769	3,959	948	-6.9%	23.3%
Biology	450	16	422	19	446	0	343	18	-23.1%	100.0%
BIOL	348	16	341	19	380		289	18	-23.9%	100.0%
SCIE	102		81		66		54		-18.2%	0.0%
Chemistry	428	45	431	27	319	15	386	39	21.0%	160.0%
CHEM	328		332		142		130		-8.5%	0.0%
ENVS			3						0.0%	0.0%
GEOL	45						48		100.0%	0.0%
PHYS	55	45	96	27	177	15	208	39	17.5%	160.0%
English	436	153	513	138	585	237	681	207	16.4%	-12.7%
CRTW	51		180		270		375		38.9%	0.0%
ENGL	225	48	153	21	132	81	135	99	2.3%	22.2%
WRIT	160	105	180	117	183	156	171	108	-6.6%	-30.8%
History	306	39	222	42	204	57	219	66	7.4%	15.8%
HIST	306	39	222	42	204	57	219	66	7.4%	15.8%
Human Nutrition	289	68	265	46	389	64	281	90	-27.8%	40.6%
NUTR	238	68	265	46	245	64	155	90	-36.7%	40.6%
GEOG	51				144		126		-12.5%	0.0%
Mass Communication	49	48	92	0	55	0	62	0	12.7%	0.0%
MCOM	49	48	92		55		62		12.7%	0.0%
Mathematics	453	18	513	42	780	0	627	72	-19.6%	100.0%
CTQR	132		171		186		138		-25.8%	0.0%
MAED/MPDC		18		24				72	0.0%	100.0%
MATH	321		342	18	594		489		-17.7%	0.0%
Modern & Classical Lang.	419	42	337	75	296	108	290	114	-2.0%	5.6%
FREN	48		64		56		56		0.0%	0.0%
MLAN	102	12	34		54	42	18	84	-66.7%	100.0%
SPAN	269	30	239	75	186	66	216	30	16.1%	-54.5%
Philosophy & Religion	78	0	60	0	18	0	39	0	116.7%	0.0%
PHIL	33		60		18		39		116.7%	0.0%
RELG	45								0.0%	0.0%
Political Science	108	6	168	0	150	6	192	0	28.0%	-100.0%
PLSC	108	6	168		150	6	192		28.0%	-100.0%
Psychology	207	333	346	249	348	159	293	108	-15.8%	-32.1%
PSYC	207	333	346	249	348	159	293	108	-15.8%	-32.1%
Sociology	300	3	429	0	496	0	399	0	-19.6%	0.0%
ANTH	57		87		181		141		-22.1%	0.0%
GRNT	21		30				3		100.0%	0.0%
SOCL	222	3	312		315		255		-19.0%	0.0%
Social Work	24	6	21	117	63	123	42	234	-33.3%	90.2%
CMVS	15								0.0%	0.0%
SCWK	9	6	21	117	63	123	42	234	-33.3%	90.2%
Speech	156	0	189	0	102	0	72	0	-29.4%	0.0%
SPCH	156		189		102		72		-29.4%	0.0%
Other	0	0	0	0	0	0	33	0	100.0%	0.0%
AAMS							33		100.0%	0.0%
LART								3		100.0%
	UG	G	UG	G	UG	G	UG	G	UG	G
University College	66	0	132	0	0	0	171	0	100.0%	0.0%
GNED/HMXP	66		132				165		100.0%	0.0%
HONR							6			

**CREDIT HOUR PRODUCTION BY DEPARTMENT BY COURSE LEVEL
SUMMER 2006 - SUMMER 2009**

DEPARTMENT	SUM 2006		SUM 2007		SUM 2008		SUM 2009		08 TO 09 % DIFF.	
	UG	G	UG	G	UG	G	UG	G	UG	G
Business Administration	983	570	1,002	672	1,315	717	1,398	750	6.3%	4.6%
Account, Finance, & Econ.	288	228	309	267	498	282	609	312	22.3%	10.6%
ACCT	90	102	111	132	246	114	312	138	26.8%	21.1%
ECON	75	69	111	90	141	84	153	99	8.5%	17.9%
FINC	123	57	87	45	111	84	144	75	29.7%	-10.7%
Com. Sci. & Quan.Meth.	106	51	159	48	181	84	218	39	20.5%	-53.6%
CSCI	19	12	48		51.5	12	46.5		-9.7%	-100.0%
QMTM	87	39	111	48	129	72	171	39	32.6%	-45.8%
Management & Marketing	589	291	534	357	636	351	571	399	-10.2%	13.7%
BADM	103	111	72	162	105	135	46	108	-56.2%	-20.0%
ENTR	6		3		3				-100.0%	0.0%
HCMT	27		33		48		57		18.8%	0.0%
HLAD/HLSM									0.0%	0.0%
MGMT	240	180	237	195	315	216	288	291	-8.6%	34.7%
MKTG	135		135		105		69		-34.3%	0.0%
SPMA	78		54		60		111		85.0%	0.0%
	UG	G	UG	G	UG	G	UG	G	UG	G
College of Education	758	1,914	566	1,626	1,043	1,368	611	2,277	-41.4%	66.4%
Center for Pedagogy	60	666	97	684	80	762	127	1,032	58.8%	35.4%
EDLD		108		210		192		231	0.0%	20.3%
EDUC	60	558	97	474	80	570	127	801	58.8%	40.5%
Curriculum & Instruction	389	690	274	678	762	279	178	948	-76.6%	239.8%
CSDV		366		381	387			435	-100.0%	100.0%
ECED	78	54	51	24	30			102	-100.0%	100.0%
ELEM	33			30		57		90	0.0%	57.9%
FACS	18		16		21		12		-42.9%	0.0%
READ	256	198	207	159	162	222	166	273	2.5%	23.0%
SCED									0.0%	0.0%
SPED		69		84	162			48	-100.0%	100.0%
VCED	4	3							0.0%	0.0%
Physical Education	309	3	195	27	201	15	306	63	52.2%	320.0%
HLTH	150	3	81	18	96	6	96	6	0.0%	0.0%
PHED	81		60	9	45	9	99	57	120.0%	533.3%
SPMA	78		54		60		111		85.0%	0.0%
WPDC	0	555	0	237	0	312	0	234	0.0%	-25.0%
WPDC		555		237		312		234	0.0%	-25.0%
	UG	G	UG	G	UG	G	UG	G	UG	G
Visual & Performing Arts	460	496	538	295	584	483	676	287	15.8%	-40.6%
Art & Design	340	152	343	145	303	105	213	62	-29.7%	-41.0%
ARTA		68		88		60		44	0.0%	-26.7%
ARTE	33	36	39	18	45	39	54		20.0%	-100.0%
ARTH	96	39	84	30	114	6	63	9	-44.7%	50.0%
ARTS	177	9	163	9	144		78	9	-45.8%	100.0%
ARTT			15				18		100.0%	0.0%
INDS	34		42						0.0%	0.0%
Dance/Theatre	33	0	60	0	117	3	216	0	84.6%	-100.0%
DANA									0.0%	0.0%
DANT	15		3		36	3	105		191.7%	-100.0%
DECD			3							0.0%
THRA	3								0.0%	0.0%
THRT	15		54		81		111		37.0%	0.0%
Music	87	80	135	48	164	72	247	90	50.6%	25.0%
MUSA	3	11	5	3	14	12	22	12	57.1%	0.0%
MUST	84	69	130	45	150	60	225	78	50.0%	30.0%
Other	0	264	0	102	0	303	0	135	0.0%	-55.4%
VPAS		264		102		303		135	0.0%	-55.4%

**CREDIT HOUR PRODUCTION BY DEPARTMENT BY COURSE LEVEL
SUMMER 2005 - SUMMER 2008**

DEPARTMENT	SUM 2005		SUM 2006		SUM 2007		SUM 2008		07 TO 08 % DIFF.	
	UG	G	UG	G	UG	G	UG	G	UG	G
Unit/Department										
Arts and Sciences	3,677	741	3,703	777	4,008	755	4,251	769	6.1%	1.9%
Biology	534	0	450	16	422	19	446	0	5.7%	-100.0%
BIOL	388		348	16	341	19	380		11.4%	-100.0%
SCIE	146		102		81		66		-18.5%	0.0%
Chemistry	416	0	428	45	431	27	319	15	-26.0%	-44.4%
CHEM	284		328		332		142		-57.2%	0.0%
ENVS					3				-100.0%	0.0%
GEOL	45		45						0.0%	0.0%
PHYS	87		55	45	96	27	177	15	84.4%	-44.4%
English	405	156	436	153	513	138	585	237	14.0%	71.7%
CRTW			51		180		270		50.0%	0.0%
ENGL	204	36	225	48	153	21	132	81	-13.7%	285.7%
WRIT	201	120	160	105	180	117	183	156	1.7%	33.3%
History	291	39	306	39	222	42	204	57	-8.1%	35.7%
HIST	291	39	306	39	222	42	204	57	-8.1%	35.7%
Human Nutrition	309	57	289	68	265	46	389	64	46.8%	39.1%
NUTR	243	57	238	68	265	46	245	64	-7.5%	39.1%
GEOG	66		51				144		100.0%	0.0%
Mass Communication	74	39	49	48	92	0	55	0	-40.2%	0.0%
MCOM	74	39	49	48	92		55		-40.2%	0.0%
Mathematics	423	21	453	18	513	42	780	0	52.0%	-100.0%
CTQR			132		171		186		8.8%	0.0%
MAED/MPDC				18		24			0.0%	-100.0%
MATH	423	21	321		342	18	594		73.7%	-100.0%
Modern & Classical Lang.	331	12	419	42	337	75	296	108	-12.2%	44.0%
FREN	48		48		64		56		-12.5%	0.0%
MLAN	54	12	102	12	34		54	42	58.8%	100.0%
SPAN	229		269	30	239	75	186	66	-22.2%	-12.0%
Philosophy & Religion	141	0	78	0	60	0	18	0	-70.0%	0.0%
PHIL	42		33		60		18		-70.0%	0.0%
RELG	99		45						0.0%	0.0%
Political Science	141	0	108	6	168	0	150	6	-10.7%	100.0%
PLSC	141		108	6	168		150	6	-10.7%	100.0%
Psychology	214	408	207	333	346	249	348	159	0.6%	-36.1%
PSYC	214	408	207	333	346	249	348	159	0.6%	-36.1%
Sociology	117	3	300	3	429	0	496	0	15.6%	0.0%
ANTH	90		57		87		181		108.0%	0.0%
GRNT	27		21		30				-100.0%	0.0%
SOCL		3	222	3	312		315		1.0%	0.0%
Social Work	142	6	24	6	21	117	63	123	200.0%	5.1%
CMVS			15						0.0%	0.0%
SCWK	142	6	9	6	21	117	63	123	200.0%	5.1%
Speech	139	0	156	0	189	0	102	0	-46.0%	0.0%
SPCH	139		156		189		102		-46.0%	0.0%
Other	0	0	0	0	0	0	0	0	0.0%	0.0%
AAMS									0.0%	0.0%
	UG	G	UG	G	UG	G	UG	G	UG	G
University College	0	0	66	0	132	0	0	0	-100.0%	0.0%
GNED/HMXP			66		132				-100.0%	0.0%

**CREDIT HOUR PRODUCTION BY DEPARTMENT BY COURSE LEVEL
SUMMER 2005 - SUMMER 2008**

DEPARTMENT	SUM 2005		SUM 2006		SUM 2007		SUM 2008		07 TO 08 % DIFF.	
	UG	G	UG	G	UG	G	UG	G	UG	G
Business Administration	1,005	723	983	570	1,002	672	1,315	717	31.2%	6.7%
Account, Finance, & Econ.	423	234	288	228	309	267	498	282	61.2%	5.6%
ACCT	168	132	90	102	111	132	246	114	121.6%	-13.6%
ECON	132	60	75	69	111	90	141	84	27.0%	-6.7%
FINC	123	42	123	57	87	45	111	84	27.6%	86.7%
Com. Sci. & Quan.Meth.	129	99	106	51	159	48	181	84	13.5%	75.0%
CSCI	27		19	12	48		51.5	12	7.3%	100.0%
QMTH	102	99	87	39	111	48	129	72	16.2%	50.0%
Management & Marketing	453	390	589	291	534	357	636	351	19.1%	-1.7%
BADM	57	147	103	111	72	162	105	135	45.8%	-16.7%
ENTR			6		3		3		0.0%	0.0%
HCMT			27		33		48		45.5%	0.0%
HLAD/HLSM	42								0.0%	0.0%
MGMT	264	243	240	180	237	195	315	216	32.9%	10.8%
MKTG	90		135		135		105		-22.2%	0.0%
SPMA			78		54		60		11.1%	0.0%
	UG	G	UG	G	UG	G	UG	G	UG	G
College of Education	482	1,815	758	1,914	566	1,626	1,043	1,368	84.3%	-15.9%
Center for Pedagogy	78	633	60	666	97	684	80	762	-17.5%	11.4%
EDLD		237		108		210		192	0.0%	-8.6%
EDUC	78	396	60	558	97	474	80	570	-17.5%	20.3%
Curriculum & Instruction	262	792	389	690	274	678	762	279	178.1%	-58.8%
CSDV		321		366		381		387	100.0%	-100.0%
ECED	21		78	54	51	24	30		-41.2%	-100.0%
ELEM		51	33			30		57	0.0%	90.0%
FACS			18		16		21		31.3%	0.0%
READ	194	261	256	198	207	159	162	222	-21.7%	39.6%
SCED									0.0%	0.0%
SPED		153		69		84	162		100.0%	-100.0%
VCED	47	6	4	3					0.0%	0.0%
Physical Education	142	15	309	3	195	27	201	15	3.1%	-44.4%
HLTH	81	6	150	3	81	18	96	6	18.5%	-66.7%
PHED	61	9	81		60	9	45	9	-25.0%	0.0%
SPMA			78		54		60		11.1%	0.0%
WPDC	0	375	0	555	0	237	0	312	0.0%	31.6%
WPDC		375		555		237		312	0.0%	31.6%
	UG	G	UG	G	UG	G	UG	G	UG	G
Visual & Performing Arts	(415)	227	460	496	538	295	584	483	8.6%	63.7%
Art & Design	(606)	(401)	340	152	343	145	303	105	-11.7%	-27.6%
ARTA				68		88		60	0.0%	-31.8%
ARTE	15		33	36	39	18	45	39	15.4%	116.7%
ARTH	15		96	39	84	30	114	6	35.7%	-80.0%
ARTS	(318)	(201)	177	9	163	9	144		-11.7%	-100.0%
ARTT	(217)	(136)			15				-100.0%	0.0%
INDS	(101)	(65)	34		42				-100.0%	0.0%
Dance/Theatre	45	273	33	0	60	0	117	3	95.0%	100.0%
DANA		273							0.0%	0.0%
DANT	15		15		3		36	3	1100.0%	100.0%
DECD					3					0.0%
THRA	15		3						0.0%	0.0%
THRT	15		15		54		81		50.0%	0.0%
Music	146	82	87	80	135	48	164	72	21.5%	50.0%
MUSA	15	6	3	11	5	3	14	12	180.0%	300.0%

**CREDIT HOUR PRODUCTION BY DEPARTMENT BY COURSE LEVEL
SUMMER 2005 - SUMMER 2008**

DEPARTMENT	SUM 2005		SUM 2006		SUM 2007		SUM 2008		07 TO 08 % DIFF.	
	MUST	131	76	84	69	130	45	150	60	15.4%
Other	0	273	0	264	0	102	0	303	0.0%	197.1%
VPAS		273		264		102		303	0.0%	197.1%

Average Number of Student Credit Hours Taught by Full-Time Teaching Faculty*
(Performance Funding Indicator 3B)

COLLEGE/DEPARTMENT	FALL 2004		FALL 2005		FALL 2006		FALL 2007		FALL 2008		5-YEAR AVERAGE	
	headcount	avg. hrs.	headcount	avg. hrs.	headcount	avg. hrs.	headcount	avg. hrs.	headcount	avg. hrs.	headcount	avg. hrs.
ARTS & SCIENCES	132	220	132	204	132	214	131	197	125	190	130	205
Biology	14	155	14	136	14	153	14	140	15	139	14	145
Chemistry and Physics	15	162	15	145	12	152	15	133	14	152	14	149
English	21	199	21	192	20	189	19	175	18	166	20	184
History	9	379	10	326	10	306	7	274	7	314	9	320
Human Nutrition	6	165	6	167	6	155	6	213	5	223	6	185
Mass Communication	7	179	7	176	7	181	7	162	7	153	7	170
Mathematics	13	293	12	281	13	328	13	303	11	273	12	296
Modern and Classical Lang.	5	174	5	136	6	164	7	134	7	152	6	152
Philosophy & Religious Studies	3	305	5	274	5	300	5	265	5	264	5	282
Political Science	10	232	8	215	8	254	8	244	8	190	8	227
Psychology	13	208	13	202	13	212	13	195	11	179	13	199
Social Work	6	149	6	134	8	96	7	152	7	105	7	127
Sociology	7	330	7	302	8	306	8	249	8	264	8	290
Speech	3	276	3	197	2	236	2	248	2	252	2	242
BUSINESS ADMINISTRATION	36	306	43	261	41	259	35	256	31	272	37	271
Accounting, Finance & Econ.	15	244	17	260	17	262	13	279	10	312	14	271
Computer Science & Quan. Meth.	9	360	10	277	9	270	9	271	9	263	9	288
Management & Marketing	12	342	16	251	15	248	13	222	12	244	14	262
EDUCATION	42	194	48	178	46	174	40	164	38	175	43	177
Center for Pedagogy	13	245	16	185	16	200	15	194	16	189	15	154
Counseling and Leadership	-	-	-	-	-	-	-	-	-	-	-	-
Curriculum and Instruction	19	154	21	161	19	162	17	129	15	122	18	146
Health and Physical Education	10	201	11	199	11	155	8	180	7	257	9	199
VISUAL & PERFORMING ARTS	45	130	41	133	46	125	44	114	41	104	43	121
Art and Design	20	139	21	158	21	149	19	143	18	102	20	138
Music	17	82	13	91	16	93	16	92	15	92	15	90
Theatre And Dance	8	208	7	133	9	123	9	90	8	132	8	137
TOTAL	255	212	264	197	265	198	250	185	235	184	254	195

*NOTE: For this performance indicator full-time teaching faculty is defined as full-time, unclassified faculty at the rank of instructor, assistant professor, associate professor, professor at institutions, who teach at least three credit hours, measured in the fall semester. Unclassified employees who hold positions above department chair, such as deans, vice presidents, and presidents are excluded.

**AVERAGE CLASS SIZE OF LECTURE/LAB
BY DISCIPLINE AND LEVEL**

Program Code	Discipline	2004		2005		2006		2007		2008	
		Lower Div.	Upper Div.	Lower Div.	Upper Div.	Lower Div.	Upper Div.	Lower Div.	Upper Div.	Lower Div.	Upper Div.
0300	Natural Resources and Conservation	18.00	1.00	19.00	0	0	0	24.00	2.00	18.00	0
0500	Area, Ethnic, Cultural and Gender Studies	0.00	15.00	0.00	15.50	0.00	9	0.00	13.67	0.00	15.67
0900	Communications	17.60	16.05	17.89	17.33	20.00	15.82	26.25	15.43	26.00	16.10
1100	Computer and Information Sciences	23.30	15.70	26.06	12.86	25.05	7.00	23.69	7.55	21.78	8.67
1300	Education	22.62	19.17	21.63	18.38	21.12	18.70	20.47	16.70	20.54	17.14
1600	Foreign Languages and Literatures	18.54	9.88	17.02	7.45	17.00	6.64	17.50	6.13	16.47	7.33
1900	Home Economics	26.13	14.64	27.56	15.27	21.33	11.71	21.36	21.60	20.42	18.63
2300	English Language and Literatures	19.81	13.66	18.97	11.63	20.22	11.52	19.48	12.33	18.96	13.67
2400	Liberal Arts	16.77	0.00	19.65	0.00	16.93	0.00	20.16	0.00	19.00	0.00
2600	Biological Sciences/Life Sciences	27.75	18.39	26.47	20.65	22.88	20.25	23.76	21.26	23.24	19.17
2700	Mathematics	32.80	9.73	35.26	9.64	37.86	10.55	35.06	10.50	35.75	11.08
3000	Multi/Interdisciplinary Studies	5.33	12.00	17.00	16.00	13.00	9.50	11.00	6.40	12.50	11.25
3100	Sport Management	29.00	9.33	31.00	12.33	18.25	6.00	25.75	8.50	24.00	17.33
3800	Philosophy and Religion	34.50	27.71	34.33	27.11	31.11	29.50	29.67	17.75	33.57	24.63
4000	Physical Sciences	22.33	16.25	21.67	17.00	22.35	16.80	20.22	13.48	21.14	14.89
4200	Psychology	44.42	19.04	42.42	21.96	38.56	23.65	40.33	21.10	46.67	21.76
4400	Public Administration and Services	23.50	12.11	22.25	10.33	18.67	10.86	16.25	15.00	23.33	11.50
4500	Social Sciences	42.80	18.91	37.83	19.06	45.87	15.43	47.55	15.21	44.48	15.18
5000	Visual and Performing Arts	23.27	11.93	21.95	11.69	20.21	11.19	18.98	10.66	17.84	10.68
5100	Communication Disorders, General	*	*	*	*	21.75	19.00	22.14	14.20	21.23	15.00
5200	Business Management and Admin.	37.38	27.27	36.87	28.38	38.26	28.50	38.51	26.60	38.37	29.55
5400	History	40.70	19.47	38.39	20.11	35.12	18.33	32.18	13.69	35.11	18.71
	University Total Average	25.43	15.33	25.71	15.64	24.07	14.55	24.30	13.70	24.47	15.14

* New program

** In fall 2003, History CIP changed from 4508 to 5401

**GRADUATE DEGREES CONFERRED
BY DEGREE PROGRAM & SEMESTER 2004 - 2008**

DEGREE PROGRAM	2004	2005	2005	2005	2006	2006	2006	2007	2007	2007	2008	2008
	FALL	SPR	SUM	FALL	SPR	SUM	FALL	SPR	SUM	FALL	SPR	SUM
ARTS & SCIENCES	5	32	1	16	31	2	12	30	7	14	56	6
M.S. Biology	0	6	1	5	2	1	3	5	0	2	0	0
M.A. English	1	3	0	1	3	0	1	3	1	1	3	0
Certificate Gerontology				0	0	0		3	0	2	5	1
M.S. Human Nutrition	3	3	0	4	3	1	2	1	1	2	0	1
M.A. History	1	2	0	0	1	0	1	2	1	3	4	1
M.L.A. Liberal Arts	0	1	0	3	4	0	3	0	0	2	2	0
MMTH Mathematics	0	0	0	2	0	0	0	0	0	0	0	0
M.S. School Psychology	0	8	0	0	8	0	1	8	0	0	11	0
S.S.P. School Psychology	0	8	0	0	9	0	0	7	1	2	9	0
MSW Social Work											21	0
M.A. Spanish	0	1	0	1	1	0	1	1	3	0	1	3
BUSINESS ADMINISTRATION	36	47	22	29	46	12	36	34	20	20	37	14
Certificate Business Administration				0						0	0	0
M.B.A. Business Administration	30	30	22	26	36	12	34	20	19	20	23	11
Executive MBA	0	15	0	1	8	0	1	12	0	0	14	1
P.B. Cert. Software Project Management	3	1	0	0	1	0	0	1	0	0	0	0
M.S. Software Engineering	3	1	0	2	1	0	1	1	1	0	0	2
EDUCATION	30	58	28	33	67	16	23	72	11	30	72	21
M.A.T. Business Education	1	3	0	0	0	0	0	0	0	0	0	0
M. Ed. Counseling & Development	1	25	2	0	17	0	0	21	0	0	15	0
M.Ed. Curriculum and Instruction	4	0	0	12	3	0	9	4	2	8	3	1
M.Ed. Educational Leadership	16	13	4	1	25	7	3	10	3	0	39	9
M. Ed. Elementary Education										0	0	0
M. Ed. Middle Level Education	0	0	0	12	1	0	1	12	0	6	3	3
M.A.T. Art Education (K-12)	0	0	0	0	0	0	0	0	0	0	0	0
M.A.T. Music Education (K-12)	0	2	0	0	0	0	0	0	0	0	0	0
M.A.T. Physical Education (K-12)	0	1	0	0	0	0	0	0	0	0	0	0
M.S. Physical Education	2	1	2	0	0	1	0	8	2	1	2	1
M. Ed. Reading	2	3	18	0	5	8	2	2	3	3	1	4
M. Ed. Secondary Education											0	0
M.A.T. Secondary Education	1										0	0
M. Ed. Special Education	2	0	1	6	3	0	3	2	0	5	1	1
M.A.T. Teacher Education- Art	0	2	0	0	3	0	0	1	0	0	0	0
M.A.T. Teacher Education- Biology	0	1	0				0	0	0	1	0	0
M.A.T. Teacher Education- Business	0	0	0				0	0	0	0	0	0
M.A.T. Teacher Education- Music											1	0
M.A.T. Teacher Education- PE				0	1	0	1	3	0	1	0	0
M.A.T. Secondary Education-Biology							0	1		1	0	0
M.A.T. Secondary Education-Business				1	2	0	2	0	1	0	1	0
M.A.T. Secondary Education-English	1	2	1	1	2	0	2	1	0	2	1	0
M.A.T. Secondary Education-Fam&Cons S				0	1	0	0	0	0	0	0	1
M.A.T. Secondary Education-French	0	0	0	0	2	0	0	0	0	1	0	0
M.A.T. Secondary Education-Math							0	1	0	0	0	0
M.A.T. Secondary Education-Soc Stud	0	4	0	0	2	0	0	6	0	1	5	1
M.A.T. Secondary Education-SPAN	0	1	0	0	0	0	0	0	0	0	0	0
VISUAL & PERFORMING ARTS	4	7	6	6	11	2	1	7	3	5	5	4
M.F.A Art and Design	2	2	0	0	3	0	0	1	0	1	0	0
M.A. Art Administration				4	1	1	0	0	0	1	0	2
M.A. Art Education	1	0	0	1	1	0	0	0	1	0	1	0
M.M. Conducting	0	4	3	0	3	0	1	0	0	1	1	1
M.M.E. Music Education	0	0	1	0	2	1	0	0	2	0	0	1
M.M. Music Performance	1	1	2	1	1	0	0	6	0	2	3	0
TOTAL	75	144	57	84	155	32	72	143	41	69	170	45

**UNDERGRADUATE DEGREES CONFERRED
BY DEGREE PROGRAM & SEMESTER
2004 - 2008**

DEGREE PROGRAM	2004 FALL	2005 SPR	2005 SUM	2005 FALL	2006 SPR	2006 SUM	2006 FALL	2007 SPR	2007 SUM	2007 FALL	2008 SPR	2008 SUM
ARTS & SCIENCES	131	233	35	144	279	30	119	266	30	122	273	26
B.S. Biology	16	31	4	12	28	1	18	34	2	15	36	1
B.S. Chemistry	1	4	1	0	7	0		9	1	0	8	0
B.A. English	4	16	2	16	19	2	9	19	0	4	14	2
B.A. Environmental Studies	2	1	1	1	3	1		2	1	0	3	0
B.S. Environmental Science	2	1	0	0	3	0	1	0	0	1	4	0
B.S. Human Nutrition	6	4	0	2	11	0	4	1	0	6	6	0
B.S. Integrated Marketing Comm.	16	19	0	11	19	0	17	15	2	14	22	0
B.A. History	9	22	2	15	29	1	12	15	5	10	22	4
B.A. Mass Communication	11	23	1	10	21	3	12	26	2	14	23	2
B.A. Gen. Communication Disorders	4	11	3	4	16	1	2	14	1	1	17	1
B.A. Mathematics	2	2	0	2	5	0	1	2	0	2	6	0
B.S. Mathematics	0	2	0	1	3	0	0	2	1	0	2	0
B.S. Medical Technology	0	0	0	0		0	0	0	0	0	0	0
B.A. Modern Languages	6	6	1	3	9	2	0	9	2	2	11	1
B.A. Philosophy & Religion	0	2	1	1	5	2	0	10	0	4	5	0
B.A. Political Science	10	19	3	17	31	7	9	17	3	9	17	3
B.A. Psychology	17	36	3	23	38	3	16	55	10	14	40	10
B.S. Science Communication	0	1	0	0	0	0	0	0	0	2	1	0
B.S.W. Social Work	8	18	8	12	12	0	9	12	0	12	7	0
B.A. Sociology	17	15	5	14	20	7	9	24	0	12	29	2
BUSINESS ADMINISTRATION	89	84	27	82	112	26	109	141	9	86	128	18
B.S. Business Administration	78	69	22	69	92	18	78	110	5	70	90	18
B.A. Economics	1	2	2	0	1	0	2	4	1	2	5	0
B.S. Computer Science	4	4	1	7	6	1	1	6	1	0	5	0
B.S. Integrated Marketing							17	15	2	14	22	0
B.S. Sport Management	6	9	2	6	13	7	11	6	0	0	6	0
EDUCATION	57	95	15	64	130	18	59	130	9	61	97	3
B.S. Business Education										0	0	0
B.S. Early Childhood Education	11	26	1	9	30	0	4	31	3	15	27	1
B.S. Elementary Education	14	29	2	25	31	0	11	37	1	18	30	0
B.S. Family Consumer Sciences	13	11	9	11	24	8	21	22	4	16	13	0
B.S. Middle Level Education								2	1	1	4	0
B.S. Physical Education	6	6	1	9	20	3	7	22	0	7	14	2
B.S. Special Education	7	14	0	4	12	0	5	10	0	4	3	0
B.S. Sport Management	6	9	2	6	13	7	11	6	0	0	6	0
VISUAL & PERFORMING ARTS	34	96	12	43	96	7	37	108	11	32	111	5
B.A. Art	7	11	4	13	17	1	8	11	1	9	16	1
B.A. Art History	2	1	0	1	5	0	2	7	1	2	3	0
B.F.A. Art	14	36	5	14	41	4	13	42	3	10	48	2
B.A. Dance	4	6	0	6	10	0	5	10	0	3	11	1
B.A. Music	2	5	0	2	3	1	2	10	0	2	3	0
B.M.E. Music Education (Choral)	1	4	0	1	3	1	1	3	1	0	3	0
B.M.E. Music Education (Instrumental)	1	4	0	0	1	0		3	0	1	7	0
B.M. Music Performance	0	9	2	1	1	0	2	5	0	2	3	0
B.A. Theatre	3	20	1	5	15	0	4	17	5	3	17	1
TOTAL	311	508	89	333	617	81	324	645	59	301	609	52

WINTHROP UNIVERSITY RETENTION & GRADUATION RATES

ALL FULL-TIME FIRST-TIME FRESHMEN

Fall	#	Retention Rate			% Grad.	Cumulative Graduation & Continuation Rate			
		after				4-Year	Within 5 Years		Within 6 Years
		1-Year	2-Year	3-Year	Graduated		Continued	Graduated	Continued
1998	826	77.1%	67.4%	63.7%	31.5%	51.2%	6.7%	56.1%	2.5%
1999	965	77.8%	69.5%	65.2%	32.4%	54.7%	6.6%	59.7%	2.3%
2000	904	74.5%	67.0%	63.2%	32.4%	54.3%	5.4%	57.9%	1.8%
2001	940	74.3%	66.0%	62.3%	31.5%	54.1%	5.9%	60.7%	1.5%
2002	1086	77.6%	67.8%	63.1%	35.1%	55.9%	6.5%	61.2%	2.5%
2003	1074	76.4%	66.4%	63.4%	36.9%	57.7%	4.9%		
2004	999	71.8%	62.5%	58.7%	34.8%				
2005	1017	74.8%	65.8%	61.8%					
2006	1180	71.7%	62.3%						
2007	1074	71.4%							

**WINTHROP GRADE POINT AVERAGES
GPA Average BY LEVEL & SEMESTER
2004 - 2008**

	2004-05			2005-06			2006-07			2007-08			2008-09	
	FALL	SPRING	SUMMER	FALL	SPRING	SUMMER	FALL	SPRING	SUMMER	FALL	SPRING	SUMMER	FALL	SPRING
Undergraduate Avg GPA	2.90	2.91	2.91	2.91	2.91	2.91	2.88	2.88	2.91	2.88	2.87	2.89	2.89	2.89
Freshmen Avg GPA	2.69	2.63	2.72	2.71	2.63	2.97	2.59	2.43	2.60	2.62	2.41	2.68	2.60	2.42
Graduate Avg GPA	3.65	3.64	3.73	3.67	3.66	3.77	3.66	3.64	3.73	3.63	3.64	3.74	3.69	3.69
All Students Avg GPA	3.01	3.01	3.26	3.02	3.01	3.25	2.98	2.98	3.20	2.99	2.98	3.22	3.01	3.02

**TOTAL FULL-TIME FACULTY HEADCOUNT
FALL 2004 - FALL 2008**

COLLEGE/DEPARTMENT	Fall 2004	Fall 2005	Fall 2006	Fall 2007	Fall 2008
ARTS & SCIENCES	139	148	147	152	145
Biology	14	15	16	16	17
Chemistry and Physics	16	15	16	17	18
English	23	24	23	24	22
History	10	10	10	8	7
Human Nutrition	7	7	6	6	6
Mass Communication	7	7	7	7	7
Mathematics	13	12	13	14	12
Modern and Classical Languages	5	6	8	9	8
Philosophy and Religious Studies	3	5	5	5	5
Political Science	10	9	8	8	8
Psychology	15	19	16	17	14
Social Work	6	7	8	10	10
Sociology	7	9	9	10	8
Speech	3	3	2	1	3
BUSINESS ADMINISTRATION*	47	53	51	51	42
Accounting, Finance & Economics	15	20	18	18	15
Computer Science & Quant. Methods	12	11	10	11	10
Management and Marketing	20	22	23	22	17
EDUCATION*	52	48	56	54	45
Center for Pedagogy	17	16	20	19	15
Counseling and Leadership**	7				
Curriculum and Instruction	17	21	25	24	20
Health and Physical Education	11	11	11	11	10
VISUAL & PERFORMING ARTS	47	51	50	54	54
Fine Arts***	21	23	22	17	16
Design***				8	9
Music	17	17	18	18	18
Theatre and Dance	9	11	10	11	11
LIBRARY	13	13	12	13	13
ACADEMIC AFFAIRS	1	1	1	1	2
TOTAL	299	314	317	325	301

* In the College of Education and the College of Business Administration, faculty have moved between departments during the periods shown.

** Became a part of Curriculum & Instruction

*** Formerly Art & Design; split in 2007 to become Fine Arts and Design.

**COMPARISON OF FALL 2007 AND FALL 2008
TOTAL FULL-TIME FACULTY
TENURED, DOCTORATE, AND TERMINAL DEGREE**

COLLEGE/DEPARTMENT	TENURED				TERMINAL DEGREE				DOCTORATE DEGREE			
	2007		2008		2007		2008		2007		2008	
	#	% OF FT	#	% OF FT	#	% OF FT	#	% OF FT	#	% OF FT	#	% OF FT
ARTS & SCIENCES	83	54.6%	85	58.6%	129	84.9%	122	84.1%	128	84.2%	125	86.2%
Biology	9	56.3%	11	64.7%	14	87.5%	15	88.2%	14	87.5%	15	88.2%
Chemistry & Physics	8	47.1%	8	44.4%	17	100.0%	17	94.4%	17	100.0%	17	94.4%
English	12	50.0%	10	45.5%	20	83.3%	17	77.3%	19	79.2%	16	72.7%
History	8	100.0%	7	100.0%	8	100.0%	7	100.0%	8	100.0%	7	100.0%
Human Nutrition	3	50.0%	3	50.0%	3	50.0%	3	50.0%	3	50.0%	3	50.0%
Mass Communication	4	57.1%	5	71.4%	5	71.4%	5	71.4%	5	71.4%	5	71.4%
Mathematics	8	57.1%	8	66.7%	12	85.7%	11	91.7%	11	78.6%	11	91.7%
Modern & Classical Lang.	4	44.4%	4	50.0%	8	88.9%	7	87.5%	8	88.9%	7	87.5%
Phil. and Religious Studies	2	40.0%	2	40.0%	5	100.0%	5	100.0%	5	100.0%	5	100.0%
Political Science	6	75.0%	7	87.5%	8	100.0%	8	100.0%	8	100.0%	8	100.0%
Psychology	11	64.7%	9	64.3%	16	94.1%	14	100.0%	16	94.1%	14	100.0%
Social Work	3	30.0%	4	40.0%	6	60.0%	6	60.0%	7	70.0%	8	80.0%
Sociology	5	50.0%	6	75.0%	7	70.0%	6	75.0%	7	70.0%	8	100.0%
Speech	0	0.0%	1	33.3%	0	0.0%	1	33.3%	0	0.0%	1	33.3%
BUSINESS ADMIN.	22	43.1%	22	52.4%	38	74.5%	36	85.7%	39	76.5%	36	85.7%
Acc., Finance & Econ.	7	38.9%	6	40.0%	12	66.7%	12	80.0%	12	66.7%	12	80.0%
Comp. Sci. & Quant. Meth.	4	36.4%	7	70.0%	10	90.9%	10	100.0%	10	90.9%	10	100.0%
Management & Marketing	11	50.0%	9	52.9%	16	72.7%	14	82.4%	17	77.3%	14	82.4%
EDUCATION	20	37.0%	18	40.0%	44	81.5%	37	82.2%	44	81.5%	38	84.4%
Center for Pedagogy	8	42.1%	7	46.7%	17	89.5%	14	93.3%	17	89.5%	14	93.3%
Curriculum & Instruction	6	25.0%	6	30.0%	18	75.0%	15	75.0%	18	75.0%	15	75.0%
Health & Physical Edu.	6	54.5%	5	50.0%	9	81.8%	8	80.0%	9	81.8%	9	90.0%
VISUAL & PERF. ARTS	24	44.4%	25	46.3%	36	66.7%	36	66.7%	18	33.3%	19	35.2%
Design	2	25.0%	3	33.3%	2	25.0%	4	44.4%	0	0.0%	0	0.0%
Fine Arts	9	52.9%	9	56.3%	12	70.6%	10	62.5%	3	17.6%	3	18.8%
Music	9	50.0%	9	50.0%	13	72.2%	14	77.8%	13	72.2%	14	77.8%
Theatre and Dance	4	36.4%	4	36.4%	9	81.8%	8	72.7%	2	18.2%	2	18.2%
LIBRARY	8	61.5%	10	76.9%	5	38.5%	5	38.5%	2	15.4%	2	15.4%
OTHER	1	50.0%	11	33.3%	1	50.0%	22	66.7%	1	50.0%	20	60.6%
TOTAL	158	48.5%	171	51.5%	253	77.6%	258	77.7%	232	71.2%	240	72.3%

VI-2 SOURCE: INSTITUTIONAL RESEARCH

**COMPARISON OF FALL 2007 AND FALL 2008
FULL-TIME INSTRUCTIONAL FACULTY
TENURED, DOCTORATE, AND TERMINAL DEGREE**

COLLEGE/DEPARTMENT	TENURED				TERMINAL DEGREE				DOCTORATE DEGREE			
	2007		2008		2007		2008		2007		2008	
	#	% OF FT Instr	#	% OF FT Instr	#	% OF FT Instr	#	% OF FT Instr	#	% OF FT Instr	#	% OF FT Instr
ARTS & SCIENCES	79	55.2%	84	58.7%	121	84.6%	121	84.6%	120	83.9%	124	86.7%
Biology	9	60.0%	11	68.8%	14	93.3%	15	93.8%	14	93.3%	15	93.8%
Chemistry & Physics	8	47.1%	8	44.4%	17	100.0%	17	94.4%	17	100.0%	17	94.4%
English	10	45.5%	10	45.5%	18	81.8%	17	77.3%	17	77.3%	16	72.7%
History	8	100.0%	7	100.0%	8	100.0%	7	100.0%	8	100.0%	7	100.0%
Human Nutrition	3	50.0%	3	50.0%	3	50.0%	3	50.0%	3	50.0%	3	50.0%
Mass Communication	4	57.1%	5	71.4%	5	71.4%	5	71.4%	5	71.4%	5	71.4%
Mathematics	8	57.1%	8	66.7%	12	85.7%	11	91.7%	11	78.6%	11	91.7%
Modern & Classical Lang.	4	50.0%	4	50.0%	7	87.5%	7	87.5%	7	87.5%	7	87.5%
Phil. and Religious Studies	2	40.0%	2	40.0%	5	100.0%	5	100.0%	5	100.0%	5	100.0%
Political Science	6	75.0%	7	87.5%	8	100.0%	8	100.0%	8	100.0%	8	100.0%
Psychology	10	71.4%	9	64.3%	13	92.9%	14	100.0%	13	92.9%	14	100.0%
Social Work	3	30.0%	4	40.0%	6	60.0%	6	60.0%	7	70.0%	8	80.0%
Sociology	4	50.0%	5	71.4%	5	62.5%	5	71.4%	5	62.5%	7	100.0%
Speech	0	0.0%	1	33.3%	0	0.0%	1	33.3%	0	0.0%	1	33.3%
BUSINESS ADMIN.	20	47.6%	22	53.7%	36	85.7%	36	87.8%	36	85.7%	36	87.8%
Acc., Finance & Econ.	7	41.2%	6	40.0%	12	70.6%	12	80.0%	12	70.6%	12	80.0%
Comp. Sci. & Quant. Meth.	4	40.0%	7	70.0%	10	100.0%	10	100.0%	10	100.0%	10	100.0%
Management & Marketing	9	60.0%	9	56.3%	14	93.3%	14	87.5%	14	93.3%	14	87.5%
EDUCATION	18	38.3%	18	40.0%	40	85.1%	37	82.2%	40	85.1%	38	84.4%
Center for Pedagogy	7	43.8%	7	46.7%	15	93.8%	14	93.3%	15	93.8%	14	93.3%
Curriculum & Instruction	5	25.0%	6	30.0%	16	80.0%	15	75.0%	16	80.0%	15	75.0%
Health & Physical Edu.	6	54.5%	5	50.0%	9	81.8%	8	80.0%	9	81.8%	9	90.0%
VISUAL & PERF. ARTS	23	46.0%	25	48.1%	33	66.0%	35	67.3%	17	34.0%	19	36.5%
Design	2	25.0%	3	33.3%	2	25.0%	4	44.4%	0	0.0%	0	0.0%
Fine Arts	8	53.3%	9	60.0%	10	66.7%	9	60.0%	2	13.3%	3	20.0%
Music	9	52.9%	9	52.9%	13	76.5%	14	82.4%	13	76.5%	14	82.4%
Theatre and Dance	4	40.0%	4	36.4%	8	80.0%	8	72.7%	2	20.0%	2	18.2%
TOTAL	140	49.6%	149	53.0%	230	81.6%	229	81.5%	213	75.5%	217	77.2%

VI-3 SOURCE: INSTITUTIONAL RESEARCH

**FULL-TIME INSTRUCTIONAL* FACULTY
BY RANK AND DEPARTMENT
FALL 2005 - FALL 2008**

COLLEGE/DEPARTMENT	PROFESSOR				ASSOCIATE PROFESSOR				ASSISTANT PROFESSOR				INSTRUCTOR			
	2005	2006	2007	2008	2005	2006	2007	2008	2005	2006	2007	2008	2005	2006	2007	2008
ARTS & SCIENCES	38	35	34	36	41	39	45	47	37	42	41	37	19	22	23	23
Biology	6	5	5	5	3	3	3	5	4	6	6	5	1	1	1	1
Chemistry & Physics	5	5	6	6	2	2	2	3	6	7	8	7	2	1	1	2
English	4	4	3	3	6	6	7	7	5	6	5	4	6	5	7	8
History	1	1	2	2	6	6	5	5	3	3	1	0	0	0	0	0
Human Nutrition	1	1	1	1	2	2	2	2	0	0	0	0	3	3	3	3
Mass Communication	1	1	1	2	3	3	3	4	2	2	2	0	1	1	1	1
Mathematics	4	5	5	4	2	1	2	2	3	4	5	5	3	3	2	1
Modern & Classical Lang.	1	3	3	3	3	2	2	2	0	0	0	0	1	2	3	3
Phil. and Religious Studies	1	0	0	0	0	0	2	2	4	5	3	3	0	0	0	0
Political Science	3	2	2	3	2	3	5	4	4	3	1	1	0	0	0	0
Psychology	3	2	2	2	7	7	8	7	4	3	3	5	0	1	1	0
Social Work	2	2	1	2	4	3	3	2	0	1	4	4	0	2	2	2
Sociology	5	4	3	3	0	0	1	1	2	2	3	3	1	2	1	0
Speech	1	0	0	0	1	1	0	1	0	0	0	0	1	1	1	2
BUSINESS ADMIN.	13	13	12	12	20	19	20	19	9	10	8	9	1	0	2	1
Acc., Finance & Econ.	5	6	5	4	11	10	10	7	1	1	1	4	0	0	1	0
Comp. Sci. & Quant. Method	3	3	3	4	4	4	5	6	2	2	2	0	1	0	0	0
Management & Marketing	5	4	4	4	5	5	5	6	6	7	5	5	0	0	1	1
EDUCATION	9	7	6	5	10	11	14	14	21	21	20	19	8	7	7	7
Center for Pedagogy	2	2	2	2	4	5	6	6	9	8	7	6	1	1	1	1
Counseling & Leadership***								0				0				0
Curriculum & Instruction	5	3	2	1	4	5	5	6	6	7	9	8	6	4	4	5
Health & Physical Education	2	2	2	2	2	1	3	2	6	6	4	5	1	2	2	1
VISUAL & PERF. ARTS	15	13	11	9	14	16	15	18	11	17	21	20	4	1	3	5
Fine Arst**	6	5	4	3	7	8	5	6	8	8	5	4	1	0	1	2
Design**		0	0	0			2	3			5	5			1	1
Music	8	7	6	5	3	4	4	5	1	5	6	6	3	1	1	1
Theatre and Dance	1	1	1	1	4	4	4	4	2	4	5	5	0	0	0	1
LIBRARY	3	3	3	3	1	2	4	4	6	4	4	4	1	1	0	0
TOTAL	78	71	66	65	86	87	98	102	84	94	94	89	33	31	35	36

* Includes Library.

**Formerly combined as Art & Design; separated into Fine Arts and Design in 2007

***Joined with Curriculum & Instruction

**FULL-TIME INSTRUCTIONAL* FACULTY HEADCOUNT
BY GENDER AND DEPARTMENT
FALL 2006 - FALL 2008**

COLLEGE/DEPARTMENT	MALE			FEMALE		
	2006	2007	2008	2006	2007	2008
ARTS & SCIENCES	70	72	69	68	71	74
Biology	7	7	7	8	8	9
Chemistry & Physics	8	10	10	7	7	8
English	6	6	6	15	16	16
History	8	6	5	2	2	2
Human Nutrition	2	2	2	4	4	4
Mass Communication	5	5	5	2	2	2
Mathematics	8	8	7	5	6	5
Modern & Classical Lang.	3	4	4	4	4	4
Phil. and Religious Studies	4	4	4	1	1	1
Political Science	6	6	6	2	2	2
Psychology	7	8	7	6	6	7
Social Work	2	2	2	6	8	8
Sociology	4	4	4	4	4	3
Speech	0	0	0	2	1	3
BUSINESS ADMIN.	30	29	25	12	13	16
Acc., Finance & Econ.	15	14	11	2	3	4
Comp. Sci. & Quant. Method	6	7	7	3	3	3
Management & Marketing	9	8	7	7	7	9
EDUCATION	12	13	12	34	34	33
Center for Pedagogy	6	6	5	10	10	10
Curriculum & Instruction	4	5	4	15	15	16
Health & Physical Education	2	2	3	9	9	7
VISUAL & PERF. ARTS	27	29	31	20	21	21
Fine Arts**	13	9	8	8	6	7
Design**		5	7		3	2
Music	11	11	11	6	6	6
Theatre and Dance	3	4	5	6	6	6
LIBRARY	2	3	3	8	8	8
TOTAL	141	146	140	142	147	152

* Includes Library.

**Formerly Art & Design; split in 2007 to become Fine Arts and Design.

**FULL-TIME INSTRUCTIONAL* FACULTY
BY DEPARTMENT
FALL 2004 - FALL 2008**

COLLEGE/DEPARTMENT	Fall 2004		Fall 2005		Fall 2006		Fall 2007		Fall 2008	
	#	TT	#	TT	#	TT	#	TT	#	TT
ARTS & SCIENCES	132	108	135	112	137	110	143	116	143	116
Biology	14	13	14	13	15	13	15	13	16	14
Chemistry and Physics	15	11	15	11	15	11	17	13	18	14
English	21	14	21	15	21	16	22	15	22	14
History	9	8	10	10	10	10	8	8	7	7
Human Nutrition	6	4	6	3	6	3	6	3	6	3
Mass Communication	7	5	7	6	7	6	7	6	7	6
Mathematics	13	10	12	9	13	9	14	12	12	11
Modern and Classical Languages	5	4	5	4	7	5	8	5	8	5
Philosophy and Religious Studies	3	3	5	4	5	4	5	5	5	5
Political Science	10	9	9	9	8	8	8	8	8	8
Psychology	13	13	14	14	13	12	14	13	14	13
Social Work	6	5	6	5	8	6	10	8	10	8
Sociology	7	7	8	7	8	6	8	7	7	7
Speech	3	2	3	2	1	1	1	0	3	1
BUSINESS ADMINISTRATION**	36	29	43	36	42	37	42	36	41	36
Accounting, Finance, & Economics	15	12	17	13	17	14	17	12	15	12
Computer Science & Quant. Meth.	9	8	10	9	9	9	10	10	10	10
Management and Marketing	12	9	16	14	16	14	15	14	16	14
EDUCATION**	42	34	48	36	46	33	47	38	45	37
Center for Pedagogy	13	13	16	15	16	15	16	15	15	14
Counseling and Leadership	3	3								
Curriculum and Instruction	16	12	21	13	19	11	20	15	20	15
Health and Physical Education	10	6	11	8	11	7	11	8	10	8
VISUAL & PERFORMING ARTS	45	34	44	38	47	40	50	44	52	44
Fine Arts***	20	16	22	20	21	19	15	12	15	11
Design***							8	7	9	8
Music	17	14	15	12	17	14	17	16	17	16
Theatre and Dance	8	4	7	6	9	7	10	9	11	9
LIBRARY	13	9	13	11	11	10	11	10	11	10
TOTAL	268	214	283	233	283	230	293	244	292	243

* Includes Library.

** In the College of Education and the College of Business Administration, faculty have moved between departments during the 5-year period shown. Counseling now part of Curriculum & Instruction.

***Formerly Art & Design; split in Fall 2007 to become Design and Fine Arts

Notes: # is headcount employed as of October 1; TT is number tenured or holding tenure track appointment.

Faculty on leave without pay are not counted;

**PART-TIME INSTRUCTIONAL FACULTY AND FTE
BY DEPARTMENT
FALL 2004 - FALL 2008**

COLLEGE/DEPARTMENT	FALL 2004		FALL 2005		FALL 2006		FALL 2007		FALL 2008		DIFF 04-08	
	#	FTE	#	FTE	#	FTE	#	FTE	#	FTE	#	FTE
ARTS & SCIENCES	98	49.71	94.00	55.78	103.00	56.71	103.00	57.94	95.00	54.21	-3.00	4.50
Biology	12	6.47	13	7.14	13	6.81	12	6.14	12	5.89	0.00	-0.58
Chemistry and Physics	4	1.66	5	2.32	8	3.40	8	4.07	8	4.07	4.00	2.41
English	20	11.70	13	10.71	17	11.29	17	10.71	10	6.23	-10.00	-5.47
History	5	1.74	4	1.74	4	1.58	5	2.16	2	1.49	-3.00	-0.25
Human Nutrition	6	1.91	7	2.24	8	3.57	8	3.90	9	4.48	3.00	2.57
Mass Communication	1	0.50	2	0.50	1	0.50	2	0.75	2	0.75	1.00	0.25
Mathematics	4	2.24	4	2.99	3	1.49	4	2.99	6	4.15	2.00	1.91
Modern and Classical Languages	21	13.78	21	16.85	19	14.70	16	12.20	14	10.71	-7.00	-3.07
Philosophy and Religious Studies	1	0.25	0	0.00	1	0.25	0	0.00	1	0.75	0.00	0.50
Political Science	5	1.74	5	2.24	4	1.41	4	1.49	5	1.83	0.00	0.09
Psychology	11	4.48	12	5.48	12	5.98	11	6.81	11	7.22	0.00	2.74
Social Work	0	0.00	1	0.25	5	1.49	4	1.49	4	1.58	4.00	1.58
Sociology	8	3.24	7	3.32	7	3.49	10	4.23	9	3.98	1.00	0.74
Speech	0	0.00	0	0.00	1	0.75	2	1.00	2	1.08	2.00	1.08
BUSINESS ADMINISTRATION*	10	4.07	9.00	2.75	13.00	5.48	14.00	8.47	13.00	4.48	3.00	0.41
Accounting, Finance & Econ.	5	1.99	3	1.25	5	2.74	5	2.74	5	1.74	0.00	-0.25
Computer Sci. & Quan. Meth.	1	0.25	1	0.25	0	0.00	0	0.00	1	0.50	0.00	0.25
Management and Marketing	4	1.83	5	1.25	8	2.74	9	5.73	7	2.24	3.00	0.41
EDUCATION*	44	12.53	44.00	14.03	50.00	20.50	65.00	46.73	29.00	16.26	-15.00	3.73
Center for Pedagogy	8	2.49	9	4.65	10	7.80	13	4.90	4	1.74	-4.00	-0.75
Counseling and Leadership	4	2.24	0	0.00	0	0.00	0	0.00	0	0.00	-4.00	-2.24
Curriculum and Instruction	4	1.00	25	7.14	6	1.91	9	6.64	5	3.40	1.00	2.40
Health and Physical Education	15	2.57	10	2.24	15	5.06	18	7.47	14	6.97	-1.00	4.40
Professional Development	13	4.23			19	5.73	25	27.72	6	4.15	-7.00	-0.08
VISUAL & PERFORMING ARTS	57	34.62	74.00	37.93	72.00	40.84	70.00	41.50	62.00	41.59	5.00	6.97
Art and Design	28	15.44	33	15.27	31	14.86					-28.00	-15.44
Fine Arts***							27	11.87	20	11.45	20.00	11.45
Design***							6	4.48	6	3.74	6.00	3.74
Music	19	15.69	25	16.68	28	21.00	23	19.26	25	21.00	6.00	5.31
Theatre and Dance	10	3.49	16	5.98	13	4.98	14	5.89	11	5.40	1.00	1.91
ACAD 101**	21	3.24	7	1.16	24	3.82	23	2.91	1	0.25	-20.00	-2.99
PART-TIME TOTAL	230	104.17	228	111.65	262	127.35	275	157.55	200	116.79	-30.00	12.62

* In the College of Education and the College of Business Administration, faculty have moved between departments during the 5-year period shown.

Notes: # is headcount employed as of October 1; FTE is teaching FTE only.

** In fall 2003, CISM program was changed, and renamed ACAD

***Art & Design split in 2007 Fall

**FULL-TIME INSTRUCTIONAL FACULTY
BY DEPARTMENT, RACE AND GENDER
FALL 2008**

COLLEGE/DEPARTMENT	AFRICAN AMERICAN			AMERICAN INDIAN/NATIVE ALASKAN			ASIAN/PACIFIC ISLANDER			HISPANIC			WHITE			TOTAL		
	Male	Female	Total	Male	Female	Total	Male	Female	Total	Male	Female	Total	Male	Female	Total	Male	Female	Total
ARTS & SCIENCES	2	6	8	0	0	0	2	4	6	3	2	5	62	62	124	69	74	143
Biology	0	0	0	0	0	0	1	0	1	0	0	0	6	9	15	7	9	16
Chemistry & Physics	1	1	2	0	0	0	1	1	2	0	0	0	8	6	14	10	8	18
English	0	1	1	0	0	0	0	0	0	0	0	0	6	15	21	6	16	22
History	0	0	0	0	0	0	0	0	0	0	0	0	5	2	7	5	2	7
Human Nutrition	0	0	0	0	0	0	0	0	0	0	0	0	2	4	6	2	4	6
Mass Communication	0	0	0	0	0	0	0	1	1	0	0	0	5	1	6	5	2	7
Mathematics	0	0	0	0	0	0	0	1	1	1	0	1	6	4	10	7	5	12
Modern & Classical Lang.	0	0	0	0	0	0	0	1	1	1	2	3	3	1	4	4	4	8
Phil. and Religious Studies	0	0	0	0	0	0	0	0	0	0	0	0	4	1	5	4	1	5
Political Science	1	0	1	0	0	0	0	0	0	0	0	0	5	2	7	6	2	8
Psychology	0	2	2	0	0	0	0	0	0	0	0	0	7	5	12	7	7	14
Social Work	0	2	2	0	0	0	0	0	0	0	0	0	2	6	8	2	8	10
Sociology	0	0	0	0	0	0	0	0	0	1	0	1	3	3	6	4	3	7
Speech	0	0	0	0	0	0	0	0	0	0	0	0	0	3	3	0	3	3
BUSINESS ADMIN.	3	2	5	0	0	0	3	0	3	0	0	0	19	14	33	25	16	41
Acc., Finance & Econ.	3	0	3	0	0	0	0	0	0	0	0	0	8	4	12	11	4	15
Comp. Sci. & Quant. Method	0	1	1	0	0	0	2	0	2	0	0	0	5	2	7	7	3	10
Management & Marketing	0	1	1	0	0	0	1	0	1	0	0	0	6	8	14	7	9	16
EDUCATION	1	4	5	0	0	0	0	0	0	1	0	1	10	29	39	12	33	45
Center for Pedagogy	0	1	1	0	0	0	0	0	0	1	0	1	4	9	13	5	10	15
Curriculum & Instruction*	1	3	4	0	0	0	0	0	0	0	0	0	3	13	16	4	16	20
Health & Physical Education	0	0	0	0	0	0	0	0	0	0	0	0	3	7	10	3	7	10
VISUAL & PERF. ARTS	0	0	0	0	0	0	1	2	3	0	0	0	30	19	49	31	21	52
Fine Arts	0	0	0	0	0	0	0	0	0	0	0	0	8	7	15	8	7	15
Design	0	0	0	0	0	0	0	1	1	0	0	0	7	1	8	7	2	9
Music	0	0	0	0	0	0	0	1	1	0	0	0	11	5	16	11	6	17
Theatre and Dance	0	0	0	0	0	0	1	0	1	0	0	0	4	6	10	5	6	11
TOTAL	6	12	18	0	0	0	6	6	12	4	2	6	121	124	245	137	144	281

* 1 International/Non-resident Alien (1female)

Full-Time Employees By EEO Occupational Category

	Fall 04	Fall 05	Fall 06	Fall 07	Fall 08
Full-Time Faculty 9/10 month	261	250	247	256	259
Full-Time Faculty 11/12 month	17	22	19	26	29
Full-Time Faculty - Total	278	272	266	282	288
Executive/Administrative & Managerial	38	39	34	40	41
Other Professionals	172	184	197	211	222
Technical & Paraprofessionals	72	74	80	85	88
Clerical & Secretarial	85	86	94	92	91
Skilled Crafts	38	39	38	39	39
Service/Maintenance	82	85	84	84	84
Total	765	779	793	833	853

DEFINITIONS FOR FINANCIAL INFORMATION

The following schedules provides information taken from the IPEDS reports submitted by Winthrop for the four years 1995-1996 through 1999-2000. Information is grouped by type of funding and program.

Provided on the expenditure schedule is the percentage each program in the Educational and General Operations is (E&G) of total Educational and General Fund Revenue. If the total percentage of E&G expenditures exceeds 100%, this is an indication that revenue other than E&G revenue was used to support E&G activities.

Funding is summarized by Unrestricted and Restricted funds. Restricted funds are those funds received for specific purposes and not available to be used in general operations of the University.

Program descriptions are as follows:

INSTRUCTION: Expenditures for academic, vocational, remedial, and technical instruction.

LIBRARY: Expenditures for organized activities that directly support the operation catalogued or otherwise classified collection.

ACADEMIC SUPPORT: Expenditures to provide support services for instruction, services that directly assist the academic function, media support, academic administration, and course/curriculum development.

RESEARCH: Expenditures for activities specifically organized to produce research outcomes, whether commissioned by an agency external to the University or separately budgeted by the University.

PUBLIC SERVICE: Expenditures in providing noninstructional services beneficial to individuals and groups external to the institution.

STUDENT SERVICES: Expenditures for the office of admission, registrar and those activities whose primary purpose is to contribute to the student's emotional and physical well-being and to his or her intellectual, cultural and social development outside the context of the formal instruction program.

INSTITUTIONAL SUPPORT: Expenditures for the following categories: Central executive-level activities concerned with management and long-range planning of the entire institution; fiscal operations including accounting and payroll; administrative data processing; space management; employee personnel and records; logistical activities that provide procurement, storerooms, safety, security, printing and transportation services; support services to faculty and staff that are not operated as auxiliary enterprises; and community and alumni relations, including development and funding raising.

OPERATIONS AND MAINTENANCE OF PLANT: Expenditures of current operating funds for the operation and maintenance of physical plant follows: Physical plant administration; building maintenance; custodial services; utilities; landscaping and ground maintenance; and major repairs and renovations.

SCHOLARSHIPS AND FELLOWSHIPS: Expenditures for scholarships and fellowships in the form of out-right grants to students selected by the institution and financed from current funds, restricted or unrestricted.

MANDATORY TRANSFERS: Transfers from current fund groups to other fund groups arising from binding legal agreements related to the financing of educational plant facilities and grant agreements with agencies of the federal government, donors and other organizations to match gifts and grants to loan and other funds.

NONMANDATORY TRANSFERS: Transfer from the current fund groups for purposes such as additions to loan funds, general or specific plant additions, voluntary renewals and replacements of plant and prepayments on debt principal.

AUXILIARY OPERATIONS: An entity that exists to furnish goods and services to students, faculty or staff and that charges as fee directly related to, although not necessarily equal to, the cost of the goods or services. Examples of auxiliary operations at Winthrop are as follows: Housing, Cafeteria and health center, vending operations and laundry, and print shop.

STATEMENT OF REVENUES, EXPENSES AND ASSETS

REVENUES	2005-06	2006-07	2007-08
<u>Operating Revenues</u>			
Tuition and Fees	\$32,314,186	\$35,324,518	\$38,078,836
Federal Grants and Contracts	\$6,226,575	\$6,658,624	\$2,875,403
State Grants and Contracts	\$12,761,368	\$13,226,485	\$13,520,776
Local/Private Grants and Contracts	\$84,479	\$244,093	\$357,859
Sales and Services of Auxiliary Enterprises	\$10,453,478	\$11,629,416	\$12,396,465
Other Sources	\$3,686,945	\$4,355,643	\$4,870,598
Total Operating Revenues	\$65,527,031	\$71,438,779	\$72,099,937
<u>Nonoperating Revenues</u>			
State Appropriations	\$21,814,659	\$23,941,590	\$25,619,899
Federal Nonoperating Grants	\$0	\$0	\$4,515,015
State Nonoperating Grants	\$18,133	\$18,132	\$17,641
Local Nonoperating Grants	\$100,848	\$3,985	\$13,629
Gifts	\$1,617,050	\$3,311,938	\$1,901,033
Investment Income	\$856,228	\$1,807,427	\$1,416,866
Other Nonoperating Revenues	\$857,171	\$954,421	\$969,621
Total Nonoperating Revenues	\$25,264,089	\$30,037,493	\$34,453,704
<u>Other Revenues & Additions</u>			
Capital Appropriations	\$1,542,667	\$1,623,035	\$6,627,488
Total All Revenues & Additions	\$92,333,787	\$103,099,307	\$113,181,129
<u>EXPENSES</u>			
<u>Operating Expenses</u>			
Instruction	\$29,673,318	\$31,120,077	\$34,016,248
Research	\$1,177,907	\$1,185,870	\$1,424,858
Public Service	\$3,754,660	\$3,401,476	\$4,078,221
Academic Support	\$6,727,349	\$7,312,366	\$7,499,938
Student Services	\$9,806,794	\$10,680,793	\$12,032,767
Institutional Support	\$7,403,126	\$7,602,734	\$8,316,817
Plant Operation & Maintenance	\$12,109,830	\$12,994,112	\$16,277,715
Depreciation	\$3,710,490	\$3,753,352	\$4,954,477
Scholarships & Fellowships	\$4,923,261	\$5,198,389	\$5,442,593
Auxiliary Expenses	\$8,374,134	\$8,743,401	\$9,588,729
Total Operating Expenses	\$87,660,869	\$91,992,570	\$103,632,363
<u>Non-Operating Expenses</u>			
Interest Expense	\$1,559,833	\$1,622,606	\$1,771,738
Other Non-Operating Expense	\$215,247	\$27,434	\$159,311
Total Non-Operating Expenses	\$1,775,080	\$1,650,040	\$1,931,049
Total All Expenses	\$89,435,949	\$93,642,610	\$105,563,412
<u>NET ASSETS</u>			
Total Assets	\$129,313,218	\$137,077,522	\$165,001,409
Total Liabilities	\$62,614,969	\$60,922,576	\$81,228,746
Total Net Assets	\$66,698,249	\$76,154,946	\$83,772,663

ACADEMIC YEAR STUDENT FEES 1999-2008

STUDENT FEES	1999-00	2000-01	2001-02	2002-03	2003-04	2004-05	2005-06	2006-07	2007-08	2008-09
TUITION										
In-State	4,126	4,262	4,668	5,600	6,652	7,816	8,756	9,500	10,210	11,060
% Difference	2.3%	3.3%	9.5%	20.0%	18.8%	17.5%	12.0%	8.5%	7.5%	8.3%
Out-of-State										
Out-of-State	7,434	7,680	8,756	10,310	12,258	14,410	16,150	17,564	19,034	20,610
% Difference	2.5%	3.3%	14.0%	17.7%	18.9%	17.6%	12.1%	8.8%	8.4%	8.3%
ROOM & BOARD										
Room										
Room	2,420	2,500	2,592	2,670	2,770	3,060	3,420	3,560	3,780	3,900
% Difference	2.5%	3.3%	3.7%	3.0%	3.7%	10.5%	11.8%	4.1%	6.2%	3.2%
Board										
Board	1,602	1,656	1,746	1,800	1,860	1,932	1,932	2,010	2,130	2,240
% Difference	3.8%	3.4%	5.4%	3.1%	3.3%	3.9%	0.0%	4.0%	6.0%	5.2%
TOTAL FEES										
In-State										
In-State	8,148	8,418	9,006	10,070	11,282	12,808	14,108	15,070	16,120	17,200
% Difference	2.7%	3.3%	7.0%	11.8%	12.0%	13.5%	10.1%	6.8%	7.0%	6.7%
Out-of-State										
Out-of-State	11,456	11,836	13,094	14,780	16,888	19,402	21,502	23,134	24,944	26,750
% Difference	2.7%	3.3%	10.6%	12.9%	14.3%	14.9%	10.8%	7.6%	7.8%	7.2%

Note: % Difference is the percent change from the previous year to the current year.

AID AWARDED TO ENROLLED UNDERGRADUATE FOR AY2007-08

Scholarship/Grant	Need-based aid	Non-need-based aid
	Total Dollars	Total Dollars
Federal	\$5,081,756	\$0
State	\$7,004,307	\$4,276,592
Other external scholarship/ grants not awarded by college	\$320,429	\$747,666
Institutional	\$2,692,538	\$3,085,997
Total Scholarships/Grants*	\$15,099,030	\$8,110,255
Self-Help		
Student loans	\$9,263,639	\$12,639,263
Federal work study	\$250,000	
State and other work study/ employment	\$0	\$1,740,349
Total Self help*	\$9,513,639	\$14,379,612
Parent loans	\$0	\$2,822,407
Tuition Waivers	\$0	\$329,293
Athletic Awards	\$469,703	\$1,095,970

NUMBER OF ENROLLED STUDENTS RECEIVING AID FOR FALL 2007

	First-time, full-time freshman	Full-time Undergraduate	Less than full-time
A. # of degree-seeking students.	1074	4470	542
B. # of students in line A who were financial aid applicants.	885	3292	192
C. # of students in line B who were determined to have financial need.	671	2664	172
D. # of students in line C who received any financial aid.	666	2627	154
E. # of students in line D who received any need-based gift aid.	647	2170	99
F. # of students in line D who received any need-based self-help aid.	560	2200	141
G. # of students in line D who received any non-need-based gift aid.	83	246	1
H. # of students in line D whose need was fully met.	153	546	11
I. On average, the % of need that was met of students who received any need-based aid. Exclude any resources that were awarded to replace EFC.	73	64	37
J. The average financial aid package of those in line c. Exclude any resources that were awarded to replace EFC.	10466	9232	5392
K. Average need-based gift award of those in line D.	7993	7063	2449
L. Average need-based self-help award (excluding PLUS loans and private alternative loans) of those in line D.	3211	4257	4170
M. Average need-based loan (excluding PLUS loans and private alternative loans) of those in line D.	3139	3982	4170
N. Number of students in line A who had no financial need who received non-need-based aid (exclude those receiving athletic awards and tuition benefits).	58	222	0
O. Average award to students in line N.	5974	4460	0
P. Number of students in line A who received a non-need-based athletic award.	36	117	0
Q. Average non-need-based athletic award to those in line P.	5860	8355	0

Note: Students may be counted in more than one row, and full-time freshmen should also be counted as full-time undergraduates.

Distribution of Loans

Year / Type of Loan	Number**	\$ Amount	% of #	% of \$
2004-2005 Total	5,523	\$23,762,189	100.0%	100.0%
Direct Loan Program*	4,666	\$19,593,846	84.5%	82.5%
Perkins Loan	343	\$618,381	6.2%	2.6%
PLUS Program	373	\$2,914,185	6.8%	12.3%
Teachers Loan Program	141	\$635,777	2.6%	2.7%
2005-2006 Total	6,113	\$24,800,237	100.0%	100.0%
Direct Loan Program*	5,274	\$20,614,384	86.3%	83.0%
Perkins Loan	317	\$586,194	5.2%	2.4%
PLUS Program	367	\$2,998,225	6.0%	12.0%
Teachers Loan Program	155	\$601,434	2.5%	2.4%
2006-2007 Total	5,105	\$24,886,471	100.0%	100.0%
Direct Loan Program*	4,378	\$20,500,160	85.7%	82.4%
Perkins Loan	212	\$435,717	4.2%	1.8%
PLUS Program	352	\$3,291,978	6.9%	13.2%
Teachers Loan Program	163	\$658,616	3.2%	2.6%
2007-2008 Total	5,409	\$26,551,518	100.0%	100.0%
Direct Loan Program*	4,583	\$22,480,388	84.7%	84.7%
Perkins Loan	305	\$569,161	5.6%	2.1%
PLUS Program	307	\$2,650,178	5.7%	10.0%
Teachers Loan Program	214	\$851,791	4.0%	3.2%

* Represents # of Subsidized Loan and Unsubsidized Loans made, not actual # of recipients. Actual # of recipients would be a smaller number.

** Counts are duplicated and reflect multiple loans.

WINTHROP UNIVERSITY LIBRARY STATISTICS 2001 - 2007

DESCRIPTION	2001-02	2002-03	2003-04	2004-05	2005-06	2006-07	2007-08
LIBRARY STAFF	31.00	31.00	31.00	31.00	31.00	31.00	31.00
Professional Librarians	14	14	14	14	14	13	13
Para-Professionals	16.00	16.00	16.00	16.00	16.00	17.00	17.00
Clericals	1.00	1.00	1.00	1.00	1.00	1.00	1.00
HOLDINGS							
Volumes in Book Stock	424,681	414,871	419,244	421,505	419,244	425,648	429,741
Shelving Capacity (Volumes)	400,000	400,000	400,000	400,000	400,000	400,000	400,000
U.S. Government Documents	0***	0***	0***	0***	0***	0***	0***
Units of Microtext	1,209,273	1,236,619	1,242,545	1,247,774	1,242,545	1,249,379	1,258,123
Audio Recordings (Discs & Cassettes)	1,664	1,739	1,739	1,756	1,739	1,778	1,809
Maps	2,620	2,675	2,733	2,763	2,733	2,824	2,903
CD-ROM Titles	256	282	294	310	294	322	20,836
Total Bound Periodicals & Serials	70,523	56,183	70,268	70,268	70,268	69,917	64,671
Total Current Subscription Serial Titles Regularly Received	1,600	1,446	1,729	1,421	1,729	1,545	1,408
Archives (Approximate Piece Count)	2,746,777	2,893,465	2,964,747	3,102,566	2,964,747	3,155,716	3,300,730
TOTAL OPERATING EXPENDITURES	\$2,174,908	\$2,359,729	\$2,424,034	\$2,683,011	\$2,424,034	\$2,818,003	\$2,987,000
STUDENTS							
Student Headcount Enrollment (Fall)	6,306	6,462	6,558	6,447	6,558	6,292	6,382
Expenditures per Student	\$345	\$365	\$370	\$416	\$370	\$448	\$468
Volumes in Book Stock per Student	67	64	64	65	64	68	67
Students per Library Staff Member	203	208	212	208	212	203	206
Students per Librarian	450	462	468	461	468	484	491

*** U.S. Government Documents are now included in the total volume count

The Center for Career and Civic Engagement

NUMBER OF CO-OPS

SCHOOL/COLLEGE	2003-04	2004-05	2005-06	2006-07	2007-08
ARTS & SCIENCES	26	11	28	19	27
BUSINESS ADMINISTRATION	29	11	4	4	1
EDUCATION	46	48	74	67	52
VISUAL & PERFORMING ARTS	31	44	28	42	28
TOTAL	132	114	134	132	108

NUMBER OF CO-OP EMPLOYERS

YEAR	A&S	Business	Education	VPA	Other Major	Total
2007-08	27	1	44	28		100
2006-07		4	58	40		102
2005-06	18	3	60	24	5	110
2004-05	10	10	21	18	0	59
2003-04	25	29	40	28	8	130
2002-03	20	23	10	12	16	81
TOTAL	100	70	233	150	29	582

CO-OP CREDIT HOURS

	A&S	Business	Education	VPA	Total
2007-08					
# of Students	27	1	52	28	108
Credit Hours Earned	51	1	127	87	266
Tuition (\$396 avg./credit hour)	\$20,196	\$396	\$50,292	\$34,452	\$105,336
2006-07					
# of Students	17	2	67	41	127
Credit Hours Earned	34.5	4	143	123	304.5
Tuition (\$396 avg./credit hour)	\$13,662	\$1,584	\$56,628	\$48,708	\$120,582
2005-06					
# of Students	15	3	72	26	116
Credit Hours Earned	31	9	146	81	267
Tuition (\$375 avg./credit hour)	\$11,315	\$3,375	\$54,750	\$30,375	\$99,815
2004-05					
# of Students	9	5	55	31	100
Credit Hours Earned	19	13	135.5	90	257.5
Tuition (\$203 avg./credit hour)	\$6,213	\$4,251	\$44,309	\$29,448	\$84,221
2003-04					
# of Students	14	17	47	29	107
Credit Hours Earned	31	37	136.5	85	289.5
Tuition (\$203 avg./credit hour)	\$8,587	\$10,249	\$37,811	\$23,545	\$80,192

Job Location and Development (JLD)

	2007-08
Number of known students for whom jobs were located or developed	132
Total earnings of the students in which we collected data	\$120,582

Part-time Job Listings**

	2003-04	2004-05	2005-06	2006-07	2007-08
Total Employers	175	426	113	105	
First-Time Employers	128	281	51	60	
Repeat Employers	47	145	62	45	
# of Jobs Posted	312	727	276	181	
# of Students Placed	\$74	\$120	\$78	\$58	
Total Earnings*	\$121,185	\$264,600	\$211,809	\$178,924	
Yearly Avg. Earned per Student	\$1,638.00	\$2,205.00	\$2,715.00	\$3,084.90	
Avg. Hourly Wage per Student	\$7.46	\$7.50	\$7.75	\$7.91	
Avg. Hrs. Worked per Week per Stu.	13.4	14	14	15	

*Estimated earnings based on average hours worked and money earned per week for each student placed.

Note: Students no longer register with open board system

** No longer post new data

JOB LISTINGS POSTED AT CAREER SERVICES

YEAR	# of Co-op Listings	# Part-time Job listings	# Full-time Job listings	Total Unique Job listings	# EagleTrak	On Campus Recruiters
2007-08*	126	1045	1076	1340		153
2006-07	162	181			1,925	120
2005-06	94	250			1621	100
2004-05	146	727			4164	87
2003-04	81	128			1446	71
2002-03	93	182			333	101
2001-02	102	424			68	144
TOTAL	804	2937	1076	1340	9557	776

*Use a new system "EAGLElink", and no longer use EagleTrak. Also numbers are not based on a full year. The system is up until Dec 2007

POSTGRADUATE ACTIVITIES OF WINTHROP ALUMNI

FIRST FULL-TIME ACTIVITY AFTER GRADUATION							
ACTIVITY	91-92	92-93	94-95	95-96	98-99	00-01	03-04
Full-time Job	72%	74%	79%	81%	60%	62%	70%
Continued Education	11%	9%	9%	11%	32%	28%	22%
Doctoral	3%	1%	5%	0%	4%	2%	6%
Masters	60%	58%	47%	75%	69%	20%	66%
Other	37%	41%	48%	25%	27%	6%	28%
Other	16%	13%	11%	5%	4%	8%	6%
Unemployed	1%	3%	1%	2%	3%	2%	1%
No Response	0%	1%	1%	1%	0%	0%	1%

TIME BEFORE HAVING A FULL-TIME JOB							
LENGTH OF TIME	89-90	91-92	93-94	95-96	98-99	00-01	03-04
Had current job before graduation	28%	29%	28%	39%	38%	33%	35%
Less than 1 month	14%	15%	13%	14%	14%	15%	10%
1-3 months	19%	24%	20%	23%	18%	24%	21%
4-6 months	10%	12%	10%	9%	8%	7%	11%
7-12 months	11%	9%	10%	3%	4%	5%	6%
Over a year	9%	9%	6%	3%	4%	0%	5%
Did not seek job	8%	2%	11%	8%	13%	13%	11%

POSTGRADUATE FIELDS OF STUDY							
FIELD	91-92	94-95	95-96	98-99	00-01	03-04	
Arts & Sciences	16%	26%	20%	20%	27%	13%	
Business	18%	14%	25%	25%	12%	6%	
Education	53%	42%	33%	33%	27%	26%	
Law	0%	1%	3%	3%	2%	2%	
Medicine	3%	4%	5%	5%	0%	0%	
Visual/Performing Arts	3%	2%	3%	3%	3%	7%	
Other	8%	12%	13%	13%	30%	46%	

WINTHROP UNIVERSITY ACTIVE ALUMNI
By County and State of Residence
As of November 26, 2008

S.C. COUNTY OF RESIDENCE	NUMBER OF ACTIVE ALUMNI
Abbeville	74
Aiken	452
Allendale	27
Anderson	613
Bamberg	50
Barnwell	77
Beauford	1
Beaufort	325
Berkeley	381
Calhoun	71
Charleston	1,674
Cherokee	382
Chester	722
Chesterfield	329
Clarendon	108
Colleton	144
Darlington	322
Dillon	138
Dorchester	392
Edgefield	95
Fairfield	168
Florence	694
Georgetown	272
Greenville	2,332
Greenwood	285
Hampton	69
Horry	689
Jasper	15
Kershaw	388
Lancaster	908
Laurens	306
Lee	64
Lexington	1,355
Marion	133
Marlboro	115
McCormick	28
Mecklenburg	1
Newberry	210
Oconee	279
Orangeburg	368
Pickens	512
Richland	2,059
Saluda	51
Spartanburg	1,334
Sumter	448
Union	235
Williamsburg	102
York	8,171
Not Identified	17
TOTAL	27,985

STATE OF RESIDENCE	NUMBER OF ACTIVE ALUMNI
Alabama	216
Alaska	11
Arizona	80
Arkansas	31
California	288
Colorado	104
Connecticut	55
Delaware	36
District of Columbia	40
Florida	995
Georgia	1,645
Hawaii	15
Idaho	6
Illinois	138
Indiana	67
Iowa	29
Kansas	33
Kentucky	99
Louisiana	64
Maine	18
Maryland	321
Massachusetts	67
Michigan	95
Minnesota	35
Mississippi	45
Missouri	66
Montana	14
Nebraska	19
Nevada	20
New Hampshire	19
New Jersey	153
New Mexico	25
New York	260
North Carolina	6,382
North Dakota	6
Ohio	214
Oklahoma	35
Ontario	3
Oregon	48
Pennsylvania	204
Rhode Island	17
South Carolina	27,985
South Dakota	5
Tennessee	414
Texas	372
Utah	16
Vermont	9
Virginia	791
Washington	71
West Virginia	38
Wisconsin	39
Wyoming	6
Other (Military Addresses)	17
Puerto Rico	5
Virgin Islands	5
TOTAL	41,791