

# WINTHROP UNIVERSITY MISSION STATEMENT

Winthrop University provides personalized and challenging undergraduate, graduate, and continuing professional education programs of national caliber within a context dedicated to public service to the State of South Carolina. All eligible bachelor's, master's and specialist degrees in the liberal arts and sciences, education, business and the visual and performing arts are nationally accredited – part of the University's commitment to be among the very best institutions of its kind in the nation.

Building on its origins as a women's college, the Winthrop University of the 21<sup>st</sup> century is achieving national recognition as a competitive and distinctive, co-educational, public, residential comprehensive teaching institution.

Winthrop enrolls an achievement-oriented, culturally diverse and socially responsible student body of 6,000 students and will remain a medium-sized comprehensive teaching university for the foreseeable future. The University recruits South Carolina's best students as well as highly qualified students from beyond the state whose presence adds diversity and enrichment to the campus and state. Winthrop prides itself on being an institution of choice for groups traditionally under-represented on the college campus.

Winthrop's historic campus, located in a dynamic city within a major metropolitan area, provides a contemporary and supportive environment that promotes student learning and development. Winthrop has a diverse and able faculty and professional staff of national caliber and supports their work as effective teachers, scholars, researchers, practitioners, and creative artists. Through this talented group, Winthrop students acquire and develop knowledge, skills, and values that enrich their lives and prepare them to meet the needs and challenges of the contemporary world, including the ability to communicate effectively, appreciate diversity, work collaboratively, synthesize knowledge, and adapt to change. Ongoing assessment of programs and services ensures both that all academic programs challenge students at their highest level of ability and that the library, instructional technology and other academic service areas support courses of study that are consonant with current methods and knowledge. As a result, Winthrop graduates are eminently well prepared to assume successful careers in business, industry, government, education, the arts, and human services, as well as to enter the most competitive graduate or professional schools.

**(Adopted by the Winthrop University Board of Trustees - 6/12/98)  
(Update Adopted by the Winthrop University Board of Trustees - 11/3/00)**

## STATEMENTS ON ACCREDITATION

Winthrop University is accredited by the Commission on Colleges of the Southern Association of Colleges and Schools to award bachelor's, master's and specialist degrees. A total of 37 undergraduate and 25 graduate degree programs are available in the College of Arts & Sciences, the College of Business Administration, the Richard W. Riley College of Education, and the College of Visual and Performing Arts. Within the four colleges more than 80 undergraduate and 40 graduate programs of study are offered through concentrations and options.

Winthrop's academic programs are measured by national standards of quality. Each academic program that can be nationally accredited through a professional specialized organization has earned that distinction. The documents of accreditation reside in the Office of Academic Affairs. The following is a listing of the specialized organizations that Winthrop University is affiliated with:

Accrediting Council on Education in Journalism and Mass Communication (ACEJMC)

American Chemical Society (ACS)

Association to Advance Collegiate Schools of Business (AACSB International)

Certified Financial Planner Board of Standards (CFP)

Commission on Accreditation for Dietetics Education (CADE)

Commission on Accreditation of Allied Health Education Programs (CAAHEP)

Computing Accreditation Commission of the Accreditation Board

for Engineering and Technology, Inc. (CAC/ABET)

Council for Accreditation of Counseling and Related Educational Programs (CACREP)

National Association of the Education of Young Children (NAEYC)

Council on Social Work Education (CSWE)

National Association of the Education of Young Children (NAEYC)

National Association of School Psychologists (NASP)

National Association of Schools of Art and Design (NASAD)

National Association of Schools of Dance (NASD)

National Association of Schools of Music (NASM)

National Association of Schools of Theatre (NAST)

National Council for the Accreditation of Teacher Education (NCATE)

Sport Management Program Review Council (SMPRC)

**WINTHROP UNIVERSITY BOARD OF TRUSTEES  
2006-2007**

<b>ELECTED MEMBERS</b>	<b>CONGRESSIONAL DISTRICT</b>	<b>TERM EXPIRES</b>
Frances Davenport	Alumni	2012
Glenda P. Owens	First	2012
Donna Tinsley	Second	2008
Jane L. LaRoche	Alumni	2010
Janet Smalley	Third	2010
Lee Cox	Fourth	2010
Susan Smith-Rex	At Large	2011
Kathy Bigham	Fifth	2012
Karl A. Folkens, Chair	Sixth	2008

**APPOINTED MEMBERS**

David E. Vipperman, Governor's Designee	Coterminous with Governor Sanford
Larry D. Durham, Sr., Governor's Appointee	Coterminous with Governor Sanford
Sanita Savage, State Superintendent of Education's Designee	Coterminous with Superintendent Tenenbaum

**EX-OFFICIO MEMBERS**

The Honorable Mark Sanford, Governor  
 Inez Tenenbaum, State Superintendent of Education  
 Anthony J. DiGiorgio, President

**INVITED REPRESENTATIVES**

Tim Daugherty, Chair of Faculty Conference  
 Dustin Evatt, Chair of Council of Student Leaders

# ACADEMIC DEPARTMENTS

## COLLEGE OF ARTS AND SCIENCES

DEPARTMENT OF BIOLOGY  
DEPARTMENT OF CHEMISTRY, PHYSICS AND GEOLOGY  
DEPARTMENT OF ENGLISH  
DEPARTMENT OF HISTORY  
DEPARTMENT OF HUMAN NUTRITION  
DEPARTMENT OF MASS COMMUNICATION  
DEPARTMENT OF MATHEMATICS  
DEPARTMENT OF MODERN LANGUAGES  
DEPARTMENT OF PHILOSOPHY AND RELIGIOUS STUDIES  
DEPARTMENT OF POLITICAL SCIENCE  
DEPARTMENT OF PSYCHOLOGY  
DEPARTMENT OF SOCIAL WORK  
DEPARTMENT OF SOCIOLOGY  
DEPARTMENT OF SPEECH  
STUDENT ACADEMIC SERVICES  
SPECIAL PROGRAMS  
    AFRICAN AMERICAN STUDIES  
    ENVIRONMENTAL SCIENCE  
    ENVIRONMENTAL STUDIES  
    GERONTOLOGY  
    LIBERAL ARTS  
    WOMEN'S STUDIES

## COLLEGE OF BUSINESS ADMINISTRATION

DEPARTMENT OF ACCOUNTING, FINANCE AND ECONOMICS  
DEPARTMENT OF COMPUTER SCIENCE AND QUANTITATIVE METHODS  
DEPARTMENT OF MANAGEMENT AND MARKETING  
STUDENT ACADEMIC SERVICES

## RICHARD W. RILEY COLLEGE OF EDUCATION

CENTER FOR PEDAGOGY  
DEPARTMENT OF COUNSELING AND LEADERSHIP  
DEPARTMENT OF CURRICULUM AND INSTRUCTION  
DEPARTMENT OF HEALTH AND PHYSICAL EDUCATION  
MACFEAT EARLY CHILDHOOD LABORATORY SCHOOL  
INSTRUCTIONAL TECHNOLOGY CENTER  
STUDENT ACADEMIC SERVICES  
SPECIAL PROGRAMS  
    NORTH CENTRAL MATH/SCIENCE HUB  
    OUTDOOR EDUCATION CENTER  
    SOUTH CAROLINA CENTER FOR TEACHER RECRUITMENT  
    SOUTH CAROLINA TEACHING FELLOWS

## UNIVERSITY COLLEGE

ACADEMY 101  
CULTURAL EVENTS  
GENERAL EDUCATION  
HONORS  
INTERNATIONAL CENTER  
LEAP  
TEACHING AND LEARNING CENTER

## COLLEGE OF VISUAL AND PERFORMING ARTS

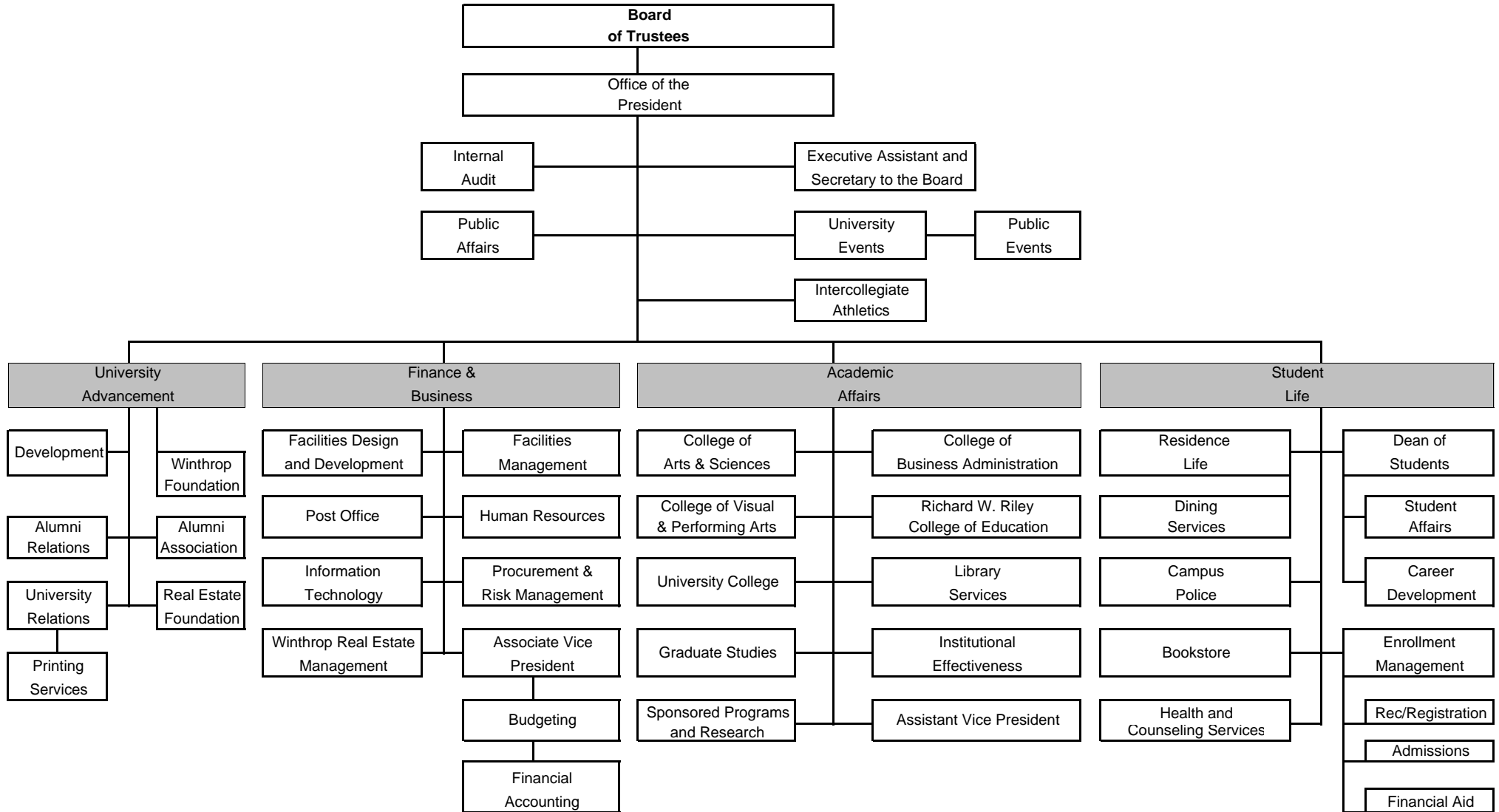
DEPARTMENT OF ART AND DESIGN  
DEPARTMENT OF MUSIC  
DEPARTMENT OF THEATRE AND DANCE  
STUDENT ACADEMIC SERVICES  
SPECIAL PROGRAMS  
    ARTS IN BASIC CURRICULUM PROJECT  
    OFFICE OF COMMUNITY ARTS  
    WINTHROP UNIVERSITY GALLERIES

## DACUS LIBRARY

PUBLIC SERVICES DIVISION  
TECHNICAL SERVICES DIVISION  
ARCHIVES AND SPECIAL COLLECTIONS DEPARTMENT  
SYSTEMS AND ELECTRONIC SERVICES DEPARTMENT

# WINTHROP UNIVERSITY

## ORGANIZATIONAL CHART 2006 - 2007



**FIRST-TIME FRESHMEN CLASS PROFILE**  
**Preliminary FALL 2006**

GENDER	Winthrop	
	#	Percent
Male	319	27.0%
Female	864	73.0%
<b>Total</b>	1183	100.0%

SCHOOL BACKGROUND	Winthrop	
	#	Percent
S.C. High School	1021	86.3%
Out-of-State H.S./GED	153	12.9%
Foreign H.S./GED	4	0.3%
S.C. GED	0	0.0%
Home School	5	0.4%
Unknown High School	0	0.0%
<b>Total</b>	1183	100.0%

RACE	Winthrop			
	Male	Female	Total	Percent
International*	1	6	7	0.6%
Black (Non-Hispanic)	75	246	321	27.1%
Native American	1	4	5	0.4%
Asian / Pacific Islander	2	15	17	1.4%
Hispanic	5	24	29	2.5%
White (Non-Hispanic)	235	569	804	68.0%
Unknown	0	0	0	0.0%
<b>Total</b>	319	864	1183	100.0%

ENROLLMENT STATUS	Winthrop			
	Male	Female	Total	Percent
Full-Time	318	862	1180	99.7%
Part-Time	1	2	3	0.3%
<b>Total</b>	319	864	1183	100.0%

HIGH SCHOOL CLASS RANK	Winthrop		
	#	Percent	Cum. %
Top Tenth	199	17.8%	17.8%
Second Tenth	259	23.1%	40.9%
Third Tenth	225	20.1%	61.0%
Fourth Tenth	187	16.7%	77.7%
Fifth Tenth	105	9.4%	87.1%
Bottom 50%	144	12.9%	100.0%
<b>Subtotal</b>	1119	100%	
Unknown/unranked	64	5.4%	
<b>Total</b>	1183		

RESIDENCY	Winthrop			
	Male	Female	Total	Percent
South Carolina Residents	280	766	1046	88.4%
Non-S.C. Residents	39	98	137	11.6%
<b>Total</b>	319	864	1183	100.0%

UNIVERSITY HOUSING	Winthrop Freshmen			
	Male	Female	Total	Percent
University Residences	277	796	1073	90.7%
Off Campus	42	68	110	9.3%
<b>Total</b>	345	838	1183	100.0%

AVERAGE ACT/SAT SCORE	#	Score
SAT	878	1054
SAT Math	878	528
SAT Verb	878	526
ACT	299	22
No Score	6	-
<b>Total</b>	1183	-

AVERAGE HIGH SCHOOL GPA	#	GPA
	1176	3.6

## FIRST-TIME ENTERING FRESHMEN FALL 1997 - FALL 2006

	1997	1998	1999	2000	2001	2002	2003	2004	2005	2006	05 to 06	
											% Diff	Diff
<b>Total 1st-Time Freshmen</b>	912	836	971	907	946	1086	1074	1001	1017	1183	16.3%	166
<b>Winthrop's Average SAT and ACT including provisionals, internationals, and age 22 &amp; older</b>												
COMBINED SAT	1039	1043	1042	1056	1055	1055	1069	1068	1080	1054	-2.4%	-26
VERB	528	526	525	532	530	526	535	536	539	526	-2.4%	-13
MATH	511	517	517	524	525	529	534	532	540	528	-2.2%	-12
# students w/ SAT	803	742	822	763	756	838	819	809	772	878	13.7%	106
% 1st-Time Freshmen	88.0%	88.8%	84.7%	84.1%	79.9%	77.2%	76.3%	80.8%	75.9%	74.2%	-2.2%	0
ACT	20	21	23	22	22	22	22	21	22	22	0.0%	0
# students w/ ACT	105	84	138	135	178	243	251	190	242	299	23.6%	57
% 1st-Time Freshmen	11.5%	10.0%	14.2%	14.9%	18.8%	22.4%	23.4%	19.0%	23.8%	25.3%	6.2%	0
# with no SAT or ACT Score	4	10	11	9	12	5	4	2	3	6	100.0%	3
	0.4%	1.2%	1.1%	1.0%	1.3%	0.5%	0.4%	0.2%	0.3%	0.5%	71.9%	0
<b>State Average SAT</b>	953	951	954	966	974	981	989	986	993	1021	2.8%	28
<b>National Average SAT</b>	1016	1017	1016	1019	1020	1020	1026	1026	1028	1021	-0.7%	-7

\* The use of SAT or ACT scores for admission to Winthrop for all new freshmen is based on the highest score of the two tests.

SOUTH CAROLINA HIGH SCHOOLS  
WHICH CONTRIBUTED TEN OR MORE STUDENTS  
TO WINTHROP'S FRESHMAN CLASS IN ONE YEAR  
FALL 2001 - FALL 2006

S.C. High School of Graduation	Enrolled Fall 01	Enrolled Fall 02	Enrolled Fall 03	Enrolled Fall 04	Enrolled Fall 05	Enrolled Fall 06
Beaufort	0	0	0	0	7	0
Camden	11	6	4	3	9	0
Chapin	12	7	7	4	6	10
Charleston County School of Ar	1	3	10	1	11	10
Cheraw	2	12	8	1	2	4
Chester	0	0	0	0	5	8
Clover	15	11	15	14	25	28
Colleton County	0	0	5	11	3	6
Columbia	6	6	5	10	3	0
Conway	0	0	0	0	2	2
Crestwood	3	6	10	8	3	13
Dreher	6	8	6	16	2	6
Dutch Fork	15	19	19	13	12	19
Eastside	7	6	5	12	11	12
Fort Dorchester	7	13	15	4	10	13
Fort Mill	22	26	15	30	34	32
Gaffney	8	4	5	13	3	18
Greenwood	0	0	0	0	7	8
Hartsville	11	5	2	6	3	1
Hillcrest	10	16	13	14	5	6
Hilton Head	10	2	5	6	10	8
Irmo	17	32	14	16	14	14
James L. Mann	11	8	7	7	1	10
Lancaster	7	5	3	11	14	5
Laurens	8	8	7	4	7	6
Lexington	32	17	19	15	8	18
Lower Richland	6	2	8	11	5	5
Lugoff-Elgin	2	6	10	1	11	15
Mauldin	8	12	10	8	4	17
Middleton	12	11	0	0	0	0
North Augusta	0	0	0	0	4	4
Northwestern	25	34	28	32	38	28
Orangeburg-Wilkinson	6	4	4	8	1	12
Paul M. Dorman	16	13	16	13	8	12
Richland Northeast	6	7	9	11	9	16
Ridgeview	12	7	17	20	16	12
Riverside	13	5	9	1	5	6
Rock Hill	18	32	22	48	33	32
Socastee	6	2	11	5	7	13
South Aiken	10	6	8	6	2	7
South Florence	6	11	8	10	1	7
Spartanburg	0	0	0	0	4	6
Spring Valley	13	12	11	17	15	14
Stratford	9	12	14	15	15	9
Summerville	16	17	29	9	15	22
Sumter	19	6	13	12	14	13
W.J. Keenan	10	9	3	5	7	1
Wade Hampton	5	2	6	6	4	8
Wando	12	21	29	19	22	22
West Ashley	0	0	11	10	13	10
West Florence	8	11	2	6	3	6
York Comprehensive	16	14	12	14	12	15



**FIRST-TIME FRESHMEN ENROLLMENT BY MAJOR  
FALL 2002 - FALL 2006**

COLLEGE / DEGREE PROGRAMS	2002	2003	2004	2005	2006	% OF 5 YEAR TOTAL	03 TO 04 % DIFF.	00 TO 04 % DIFF.
<b>ARTS &amp; SCIENCES</b>	<b>369</b>	<b>376</b>	<b>368</b>	<b>360</b>	<b>452</b>	<b>35.6%</b>	<b>25.6%</b>	<b>22.5%</b>
Biology	114	108	116	94	95	9.7%	1.1%	-16.7%
Chemistry	12	8	13	25	33	1.7%	32.0%	175.0%
English	24	27	25	30	45	2.8%	50.0%	87.5%
Environmental Science	2	5	1	1	1	0.2%	0.0%	N/A
Environmental Studies	*	*	4	2	2	0.1%	N/A	N/A
General Communication Disorders	13	8	4	6	12	0.8%	100.0%	-7.7%
History	18	18	20	24	33	2.1%	37.5%	83.3%
Human Nutrition	9	7	10	8	11	0.8%	37.5%	22.2%
Integrated Marketing Communication	2	9	19	11	19	1.1%	72.7%	850.0%
Mass Communication	57	59	45	37	48	4.5%	29.7%	-15.8%
Mathematics (B.A.)	12	5	11	18	8	1.0%	-55.6%	-33.3%
Mathematics (B.S.)	9	6	5	0	11	0.6%	100.0%	22.2%
Medical Technology	0	0	0	0	0	0.0%	0.0%	0.0%
Modern Languages	5	3	7	4	11	0.6%	175.0%	120.0%
Philosophy & Religious Studies	5	3	0	4	3	0.3%	-25.0%	-40.0%
Political Science	35	35	24	27	28	2.8%	3.7%	-20.0%
Psychology	38	56	46	57	55	4.7%	-3.5%	44.7%
Science Communications	0	0	0	0	0	0.0%	0.0%	0.0%
Social Work	7	6	7	2	12	0.6%	500.0%	71.4%
Sociology	7	13	11	10	25	1.2%	150.0%	257.1%
<b>BUSINESS ADMINISTRATION</b>	<b>212</b>	<b>188</b>	<b>182</b>	<b>184</b>	<b>248</b>	<b>18.8%</b>	<b>34.8%</b>	<b>17.0%</b>
Business Administration	159	140	124	133	180	13.6%	35.3%	13.2%
Computer Science	29	31	20	15	23	2.2%	53.3%	-20.7%
Integrated Marketing Communication	2	9	19	11	19	1.1%	72.7%	850.0%
Economics					1		100.0%	
Sport Management	22	8	19	25	25	1.8%	0.0%	13.6%
<b>EDUCATION</b>	<b>210</b>	<b>192</b>	<b>189</b>	<b>184</b>	<b>238</b>	<b>18.7%</b>	<b>29.3%</b>	<b>13.3%</b>
Business Education	0	0	0		0	0.0%	0.0%	0.0%
Early Childhood Education	62	61	70	61	70	6.0%	14.8%	12.9%
Elementary Education	90	86	64	62	70	6.9%	12.9%	-22.2%
Middle Level Education					18		100.0%	
Family & Consumer Science (HEED)	3	0	0	1	2	0.1%	100.0%	-33.3%
Physical Education	18	26	27	29	38	2.6%	31.0%	111.1%
Special Education	15	11	9	6	15	1.0%	150.0%	0.0%
Sport Management	22	8	19	25	25	1.8%	0.0%	13.6%
<b>VISUAL &amp; PERFORMING ARTS</b>	<b>188</b>	<b>175</b>	<b>171</b>	<b>198</b>	<b>184</b>	<b>16.9%</b>	<b>-7.1%</b>	<b>-2.1%</b>
Art (B.A.)	17	10	13	103	22	3.1%	-78.6%	29.4%
Art (B.F.A.)	93	80	79	0	66	5.9%	100.0%	-29.0%
Art History (B.A.)	1	1	1	1	4	0.1%	300.0%	300.0%
Dance	21	26	12	16	18	1.7%	12.5%	-14.3%
Music (B.A.)	2	9	7	13	12	0.8%	-7.7%	500.0%
Music Education (Choral)	7	9	11	12	19	1.1%	58.3%	171.4%
Music Education (Instrumental)	13	7	22	18	20	1.5%	11.1%	53.8%
Music (Performance)	8	14	12	13	7	1.0%	-46.2%	-12.5%
Theatre	26	19	14	22	16	1.8%	-27.3%	-38.5%
<b>PRE-MAJOR</b>	<b>131</b>	<b>157</b>	<b>129</b>	<b>122</b>	<b>105</b>	<b>11.9%</b>	<b>-13.9%</b>	<b>-19.8%</b>
<b>INTERDISCIPLINARY MAJORS</b>	<b>24</b>	<b>17</b>	<b>38</b>	<b>36</b>	<b>25</b>	<b>2.6%</b>	<b>-30.6%</b>	<b>4.2%</b>
Integrated Marketing Communication	2	9	19	11	0	0.8%	-100.0%	-100.0%
Sport Management	22	8	19	25	25	1.8%	0.0%	13.6%

\* New program

\*\* Discontinued program

**HEADCOUNT ENROLLMENT OF TRANSFERS  
BY S.C. INSTITUTION OF PREVIOUS ENROLLMENT  
FALL 2002 - FALL 2006**

FICE	TECHNICAL COLLEGES	Enrolled Fall 02	Enrolled Fall 03	Enrolled Fall 04	Enrolled Fall 05	Enrolled Fall 06	5 Year % of Total
3996	York	86	60	77	94	64	55.3%
3993	Midlands	12	13	19	16	24	12.2%
3991	Greenville	15	8	16	10	4	7.7%
4920	Trident - Palmer	3	17	8	15	15	8.4%
3992	Piedmont	3	4	5	2	1	2.2%
4926	Tri-County	0	2	3	2	3	1.5%
7602	Chesterfield-Marlboro	2	0	1	2	6	1.6%
3994	Spartanburg	2	4	4	7	5	3.2%
4925	Horry-Georgetown	0	1	4	3	4	1.7%
3995	Central Carolina	3	2	4	1	4	2.0%
3990	Florence-Darlington	2	2	0	3	1	1.2%
6815	Orangeburg-Calhoun	2	2	1	2	2	1.3%
9910	Tech. College of Low Country	0	0	3	0	0	0.4%
10056	Aiken	0	1	1	0	2	0.6%
9932	Williamsburg	1	0	1	0	0	0.3%
4922	South University	0	0	1	0	1	0.3%
5363	Denmark	1	0	0	0	0	0.1%
	<b>Subtotal</b>	<b>132</b>	<b>116</b>	<b>148</b>	<b>157</b>	<b>136</b>	<b>100.0%</b>

FICE	PUBLIC SR COLLEGE & UNIV	Enrolled Fall 02	Enrolled Fall 03	Enrolled Fall 04	Enrolled Fall 05	Enrolled Fall 06	5 Year % of Total
3453	USC-Lancaster	17	17	8	10	14	9.6%
3448	USC-Columbia	7	17	12	13	9	8.4%
3428	College of Charleston	4	4	10	7	8	4.8%
3435	Lander	5	5	2	3	3	2.6%
3451	Coastal Carolina	3	6	4	7	3	3.3%
9226	Francis Marion	2	5	3	6	4	2.9%
3425	Clemson	3	2	6	6	3	2.9%
6951	USC-Upstate	2	3	4	9	3	3.0%
3446	S.C. State	3	5	2	6	5	3.0%
12112	USC-Sumter	2	3	1	4	2	1.7%
3449	USC-Aiken	4	2	1	2	0	1.3%
4927	USC-Union	0	2	3	1	1	1.0%
3454	USC-Salkehatchie	0	0	0	1	0	0.1%
3450	USC-Beaufort	0	3	1	1	6	1.6%
3423	The Citadel	0	1	0	0	0	0.1%
3438	Medical University of S.C.	0	0	0	0	0	0.0%
	<b>Subtotal</b>	<b>52</b>	<b>75</b>	<b>57</b>	<b>76</b>	<b>61</b>	<b>100.0%</b>

**HEADCOUNT ENROLLMENT OF TRANSFERS  
BY S.C. INSTITUTION OF PREVIOUS ENROLLMENT  
FALL 2002 - FALL 2006**

FICE	PRIVATE SR COLLEGES & UNIV	Enrolled Fall 02	Enrolled Fall 03	Enrolled Fall 04	Enrolled Fall 05	Enrolled Fall 06	5 Year % of Total
3447	Spartanburg Methodist	7	6	14	9	8	6.4%
3419	Charleston Southern (Baptist)	0	2	6	3	1	1.7%
3441	North Greenville	4	2	1	1	2	1.5%
3430	Columbia	2	1	1	1	4	1.3%
3440	Newberry	1	4	2	0	2	1.3%
3427	Coker	1	3	4	1	1	1.5%
3420	Benedict	2	1	2	1	1	1.0%
3424	Clafin	1	0	3	4	5	1.9%
3418	Anderson	1	2	1	3	1	1.2%
3436	Limestone	0	1	0	3	1	0.7%
0439	Morris	1	2	0	0	0	0.4%
3434	Furman	2	0	1	0	1	0.6%
3457	Wofford	1	0	1	0	1	0.4%
3432	Erskine	0	1	3	1	3	1.2%
3431	Converse	0	0	0	0	1	0.1%
3445	Presbyterian	0	0	1	0	0	0.1%
3455	Voorhees	0	0	1	0	0	0.1%
3417	Allen	1	0	0	2	1	0.6%
903404	Johnson and Wales	0	0	0	1	0	0.1%
3422	Central Wesleyan	0	0	1	1	0	0.3%
3429	Columbia International University	0	0	1	1	0	0.3%
3421	Bob Jones	0	0	0	0	0	0.0%
<b>Subtotal</b>		<b>24</b>	<b>25</b>	<b>43</b>	<b>32</b>	<b>33</b>	<b>100.0%</b>

SUMMARY	Enrolled Fall 02	Enrolled Fall 03	Enrolled Fall 04	Enrolled Fall 05	Enrolled Fall 06	5 Year % of Total
<b>Technical Colleges</b>	134	116	148	157	136	39.4%
<b>Public Sr Colleges &amp; Univ.</b>	52	75	57	76	61	18.2%
<b>Private Sr Colleges &amp; Univ.</b>	24	25	43	32	33	9.1%
<b>Out-of-State</b>	127	92	116	94	77	33.2%
<b>Total</b>	<b>337</b>	<b>308</b>	<b>364</b>	<b>359</b>	<b>307</b>	<b>100.0%</b>

**HEADCOUNT ENROLLMENT  
OF FIRST-YEAR GRADUATE STUDENTS AT WINTHROP  
BY S.C. INSTITUTIONS OF PREVIOUS ENROLLMENT  
Fall 2002- Fall 2006**

FICE	PUBLIC SR COLLEGE & UNIV	Enrolled Fall 02	Enrolled Fall 03	Enrolled Fall 04	Enrolled Fall 05	Enrolled Fall 06	5 Year % SC Public	5 Year % of Total
003425	Clemson	10	5	5	42	11	10.6%	5.7%
003451	Coastal Carolina	10	4	9	4	0	3.9%	2.1%
003428	College of Charleston	4	4	5	9	5	3.9%	2.1%
009226	Francis Marion	3	0	0	10	4	2.5%	1.3%
003435	Lander	2	1	2	56	2	9.2%	4.9%
003438	Medical University of S.C.	1	0	0	0	0	0.1%	0.1%
003446	S.C. State	2	2	2	9	8	3.3%	1.8%
003423	The Citadel	0	1	0	4	1	0.9%	0.5%
003449	USC-Aiken	2	0	1	12	0	2.2%	1.2%
003448	USC-Columbia	13	19	13	56	21	17.7%	9.6%
003453	USC-Lancaster	0	1	1	1	1	0.6%	0.3%
006951	USC-Upstate	1	1	3	3	2	1.5%	0.8%
003996	York Technical					1	0.1%	0.1%
003456	Winthrop	56	55	49	49	90	43.5%	23.5%
	<b>Subtotal</b>	<b>104</b>	<b>93</b>	<b>90</b>	<b>255</b>	<b>146</b>	<b>100.0%</b>	<b>54.0%</b>

FICE	PRIVATE SR COLLEGE & UNIV	Enrolled Fall 02	Enrolled Fall 03	Enrolled Fall 04	Enrolled Fall 05	Enrolled Fall 06	5 Year % SC Private	5 Year % of Total
003418	Anderson College	0	0	0	10	2	10.9%	0.9%
003420	Benedict	0	0	0	1	2	2.7%	0.2%
003421	Bob Jones	0	0	0	0	0	0.0%	0.0%
003419	Charleston Southern	0	1	1	4	1	6.4%	0.5%
003424	Clafflin	0	1	0	4	0	4.5%	0.4%
003427	Coker	0	0	0	13	4	15.5%	1.3%
003429	Columbia International University	0	0	0	3	1	3.6%	0.3%
003430	Columbia	1	0	1	11	0	11.8%	1.0%
003431	Converse	1	0	0	6	1	7.3%	0.6%
003432	Erskine	0	0	0	8	1	8.2%	0.7%
003434	Furman	4	3	1	0	1	8.2%	0.7%
003436	Limestone	2	0	1	0	2	4.5%	0.4%
003439	Morris	0	1	0	0	2	2.7%	0.2%
003440	Newberry	0	1	0	0	3	3.6%	0.3%
003441	North Greenville	0	0	1	0	0	0.9%	0.1%
003445	Presbyterian	0	1	0	0	1	1.8%	0.2%
003422	Southern Wesleyan	0	0	0	4	1	4.5%	0.4%
003455	Voorhees	1	0	0	0	0	0.9%	0.1%
003457	Wofford	0	0	1	0	1	1.8%	0.2%
	<b>Subtotal</b>	<b>9</b>	<b>8</b>	<b>6</b>	<b>64</b>	<b>23</b>	<b>100.0%</b>	<b>8.6%</b>

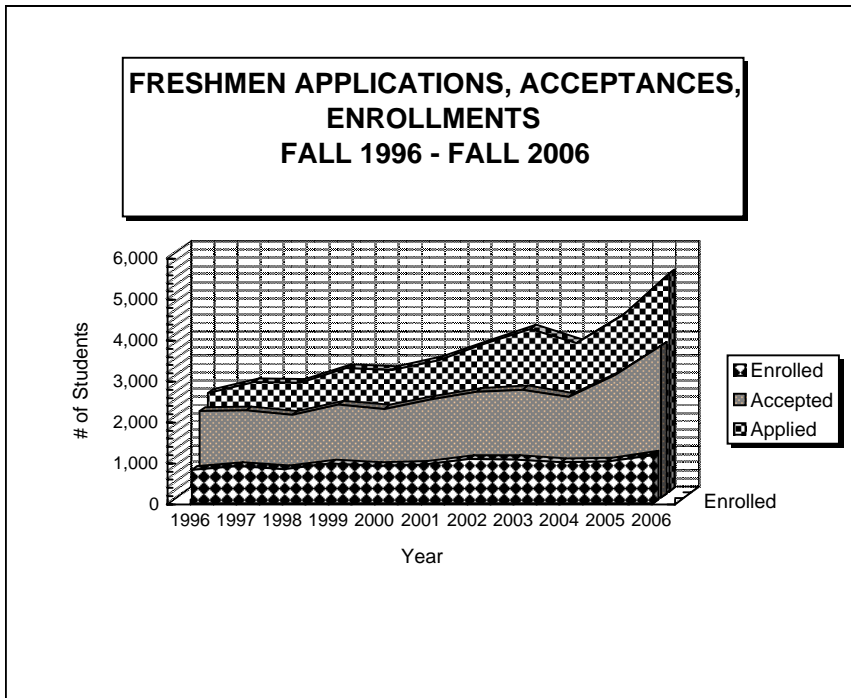
**SUMMARY**

SUMMARY	Enrolled Fall 02	Enrolled Fall 03	Enrolled Fall 04	Enrolled Fall 05	Enrolled Fall 06	5 Year % of Total
Public Senior Colleges & Univ.	104	93	90	255	146	54.0%
Private Senior Colleges & Univ.	9	8	6	64	23	8.6%
Out-of-State	74	72	94	94	142	37.4%
<b>Total</b>	<b>187</b>	<b>173</b>	<b>190</b>	<b>413</b>	<b>311</b>	<b>100.0%</b>

NOTE: Only students classified as fully-admitted, degree-seeking students are counted.

**FRESHMEN APPLICATIONS, ACCEPTANCES, ENROLLMENTS  
FALL 1995 - FALL 2005**

YEAR	1996	1997	1998	1999	2000	2001	2002	2003	2004	2005	2006
<b>Applications</b>	2,406	2,662	2,651	3,014	2,969	3,207	3,604	3,972	3,617	4,303	5,328
<b>Acceptances</b>	2,104	2,130	2,019	2,261	2,163	2,389	2,579	2,632	2,452	2,985	3,704
<b>Acceptances as % of Applied</b>	87.4%	80.0%	76.2%	75.0%	72.9%	74.5%	71.6%	66.3%	67.8%	69.4%	69.5%
<b>Enrolled</b>	819	912	836	971	907	946	1,086	1,074	1,001	1,017	1,183
<b>Enrolled as % of Accepted</b>	38.9%	42.8%	41.4%	42.9%	41.9%	39.6%	42.1%	40.8%	40.8%	34.1%	31.9%



**HEADCOUNT ENROLLMENT  
BY GENDER, LEVEL & FULL/PART TIME  
FALL 2006**

LEVEL	2006		
	Male	Female	Total
Full-Time Undergraduate	1,424	3,197	<b>4,621</b>
Part-Time Undergraduate	147	343	<b>490</b>
<b>Subtotal</b>	<b>1,571</b>	<b>3,540</b>	<b>5,111</b>
Full-Time Graduate	119	193	<b>312</b>
Part-Time Graduate	229	640	<b>869</b>
<b>Subtotal</b>	<b>348</b>	<b>833</b>	<b>1,181</b>
<b>Grand Total</b>	<b>1,919</b>	<b>4,373</b>	<b>6,292</b>

**HEADCOUNT ENROLLMENT  
BY GENDER & LEVEL  
FALL 1997 - FALL 2006**

LEVEL	1997		1998		1999		2000		2001	
	Male	Female	Male	Female	Male	Female	Male	Female	Male	Female
Undergraduate	1,346	2,948	1,342	2,998	1,380	3,231	1,425	3,225	1,485	3,353
Graduate	351	929	317	934	306	923	351	1,061	370	1,098
<b>Total</b>	<b>1,697</b>	<b>3,877</b>	<b>1,659</b>	<b>3,932</b>	<b>1,686</b>	<b>4,154</b>	<b>1,776</b>	<b>4,286</b>	<b>1,855</b>	<b>4,451</b>
<b>Percent</b>	<b>30.4%</b>	<b>69.6%</b>	<b>29.7%</b>	<b>70.3%</b>	<b>28.9%</b>	<b>71.1%</b>	<b>29.3%</b>	<b>70.7%</b>	<b>29.4%</b>	<b>70.6%</b>

LEVEL	2002		2003		2004		2005		2006	
	Male	Female	Male	Female	Male	Female	Male	Female	Male	Female
Undergraduate	1,529	3,527	1,558	3,603	1,588	3,625	1,598	3,589	1,571	3,540
Graduate	349	1,057	362	1,035	333	901	353	940	348	833
<b>Total</b>	<b>1,878</b>	<b>4,584</b>	<b>1,920</b>	<b>4,638</b>	<b>1,921</b>	<b>4,526</b>	<b>1,951</b>	<b>4,529</b>	<b>1,919</b>	<b>4,373</b>
<b>Percent</b>	<b>29.1%</b>	<b>70.9%</b>	<b>29.3%</b>	<b>70.7%</b>	<b>29.8%</b>	<b>70.2%</b>	<b>30.1%</b>	<b>69.9%</b>	<b>30.5%</b>	<b>69.5%</b>

## HEADCOUNT ENROLLMENT BY GENDER, CLASS, ETHNICITY & FULL/PART TIME FALL 2006

CLASS/ETHNICITY	FULL-TIME				PART-TIME				TOTAL CLASS	
	FEMALE		MALE		FEMALE		MALE		N	%
	N	%	N	%	N	%	N	%		
<b>FRESHMAN</b>	<b>920</b>	<b>100%</b>	<b>359</b>	<b>100%</b>	<b>19</b>	<b>100%</b>	<b>4</b>	<b>100%</b>	<b>1,302</b>	<b>100%</b>
International	7	0.8%	4	1.1%	0	0.0%	0	0.0%	11	0.8%
Black(Non-Hispanic)	272	29.6%	89	24.8%	8	42.1%	2	50.0%	371	28.5%
Native American	4	0.4%	1	0.3%	0	0.0%	0	0.0%	5	0.4%
Asian	15	1.6%	2	0.6%	0	0.0%	0	0.0%	17	1.3%
Hispanic	25	2.7%	7	1.9%	0	0.0%	0	0.0%	32	2.5%
White(Non-Hispanic)	597	64.9%	256	71.3%	11	57.9%	2	50.0%	866	66.5%
Unknown		0.0%		0.0%		0.0%		0.0%	0	0.0%
<b>SOPHOMORE</b>	<b>732</b>	<b>100%</b>	<b>339</b>	<b>100%</b>	<b>35</b>	<b>100%</b>	<b>9</b>	<b>100%</b>	<b>1,115</b>	<b>100%</b>
International	14	1.9%	6	1.8%	0	0.0%	0	0.0%	20	1.8%
Black(Non-Hispanic)	220	30.1%	92	27.1%	14	40.0%	2	22.2%	328	29.4%
Native American	4	0.5%	3	0.9%	1	2.9%	0	0.0%	8	0.7%
Asian	10	1.4%	2	0.6%	0	0.0%	0	0.0%	12	1.1%
Hispanic	7	1.0%	1	0.3%	1	2.9%	0	0.0%	9	0.8%
White(Non-Hispanic)	477	65.2%	235	69.3%	19	54.3%	7	77.8%	738	66.2%
Unknown		0.0%		0.0%		0.0%		0.0%	0	0.0%
<b>JUNIOR</b>	<b>685</b>	<b>100%</b>	<b>326</b>	<b>100%</b>	<b>43</b>	<b>100%</b>	<b>16</b>	<b>100%</b>	<b>1,070</b>	<b>100%</b>
International	11	1.6%	12	3.7%	0	0.0%	0	0.0%	23	2.1%
Black(Non-Hispanic)	195	28.5%	90	27.6%	15	34.9%	1	6.3%	301	28.1%
Native American	1	0.1%	1	0.3%	0	0.0%	0	0.0%	2	0.2%
Asian	13	1.9%	8	2.5%	0	0.0%	0	0.0%	21	2.0%
Hispanic	8	1.2%	4	1.2%	1	2.3%	1	6.3%	14	1.3%
White(Non-Hispanic)	457	66.7%	211	64.7%	27	62.8%	14	87.5%	709	66.3%
Unknown		0.0%		0.0%		0.0%		0.0%	0	0.0%
<b>SENIOR</b>	<b>852</b>	<b>100%</b>	<b>395</b>	<b>100%</b>	<b>95</b>	<b>100%</b>	<b>58</b>	<b>100%</b>	<b>1,400</b>	<b>100%</b>
International	19	2.2%	13	3.3%	1	1.1%	0	0.0%	33	2.4%
Black(Non-Hispanic)	229	26.9%	88	22.3%	35	36.8%	14	24.1%	366	26.1%
Native American	5	0.6%	1	0.3%	0	0.0%	1	1.7%	7	0.5%
Asian	10	1.2%	7	1.8%	0	0.0%	0	0.0%	17	1.2%
Hispanic	9	1.1%	6	1.5%	2	2.1%	1	1.7%	18	1.3%
White(Non-Hispanic)	580	68.1%	280	70.9%	57	60.0%	42	72.4%	959	68.5%
<b>UNDERGRADUATE SPECIAL</b>	<b>8</b>	<b>100%</b>	<b>5</b>	<b>100%</b>	<b>151</b>	<b>100%</b>	<b>60</b>	<b>100%</b>	<b>224</b>	<b>100%</b>
International	5	62.5%	3	60.0%	10	6.6%	2	3.3%	20	8.9%
Black(Non-Hispanic)	0	0.0%	0	0.0%	29	19.2%	14	23.3%	43	19.2%
Native American	0	0.0%	0	0.0%	1	0.7%	0	0.0%	1	0.4%
Asian	0	0.0%	0	0.0%	1	0.7%	1	1.7%	2	0.9%
Hispanic	1	12.5%	0	0.0%	1	0.7%	4	6.7%	6	2.7%
White(Non-Hispanic)	2	25.0%	2	40%	109	72.2%	39	65.0%	152	67.9%
Unknown		0.0%		0.0%		0.0%		0.0%	0	0.0%
<b>GRADUATE</b>	<b>189</b>	<b>100%</b>	<b>117</b>	<b>100%</b>	<b>279</b>	<b>100%</b>	<b>116</b>	<b>100%</b>	<b>701</b>	<b>100%</b>
International	14	7.4%	13	11.1%	1	0.4%	3	2.6%	31	4.4%
Black(Non-Hispanic)	36	19.0%	20	17.1%	68	24.4%	17	14.7%	141	20.1%
Native American	1	0.5%	1	0.9%	1	0.4%	1	0.9%	4	0.6%
Asian	5	2.6%	3	2.6%	3	1.1%	3	2.6%	14	2.0%
Hispanic	4	2.1%	1	0.9%	3	1.1%	0	0.0%	8	1.1%
White(Non-Hispanic)	129	68.3%	79	68%	203	72.8%	92	79.3%	503	71.8%
Unknown	0	0.0%		0.0%		0.0%		0.0%	0	0.0%
<b>GRADUATE SPECIAL</b>	<b>4</b>	<b>100%</b>	<b>2</b>	<b>100%</b>	<b>361</b>	<b>100%</b>	<b>113</b>	<b>100%</b>	<b>480</b>	<b>100%</b>
International	0	0.0%	0	0.0%	0	0.0%	0	0.0%	0	0.0%
Black(Non-Hispanic)	0	0.0%	0	0.0%	45	12.5%	20	17.7%	65	13.5%
Native American	0	0.0%	0	0.0%	0	0.0%	0	0.0%	0	0.0%
Asian	0	0.0%	0	0.0%	2	0.6%	0	0.0%	2	0.4%
Hispanic	0	0.0%	0	0.0%	5	1.4%	0	0.0%	5	1.0%
White(Non-Hispanic)	4	100.0%	2	100%	309	85.6%	93	82.3%	408	85.0%
Unknown		0.0%		0%		0.0%		0.0%	0	0.0%
<b>GRAND TOTAL</b>	<b>3,390</b>	<b>54%</b>	<b>1,543</b>	<b>24.5%</b>	<b>983</b>	<b>15.6%</b>	<b>376</b>	<b>6.0%</b>	<b>6,292</b>	<b>100%</b>

**HEADCOUNT ENROLLMENT  
BY ETHNIC CATEGORY & FULL/PART TIME  
FALL 2006**

ETHNIC CATEGORY	FULL-TIME		PART-TIME		TOTAL	
	N	%	N	%	N	%
<b>Undergraduate</b>	<b>4,621</b>	<b>100%</b>	<b>490</b>	<b>100%</b>	<b>5,111</b>	<b>100%</b>
White, non-Hispanic	3,097	67.0%	327	66.7%	3,424	67.0%
Black, non-Hispanic	1,275	27.6%	134	27.3%	1,409	27.6%
International	94	2.0%	13	2.7%	107	2.1%
American Indian	20	0.4%	3	0.6%	23	0.5%
Asian/Pacific Islander	67	1.4%	2	0.4%	69	1.4%
Hispanic	68	1.5%	11	2.2%	79	1.5%
Unknown		0.0%		0.0%	0	0.0%
<b>Graduate</b>	<b>312</b>	<b>100%</b>	<b>869</b>	<b>100%</b>	<b>1,181</b>	<b>100%</b>
White, non-Hispanic	214	68.6%	697	80.2%	911	77.1%
Black, non-Hispanic	56	17.9%	150	17.3%	206	17.4%
International	27	8.7%	4	0.5%	31	2.6%
American Indian	2	0.6%	2	0.2%	4	0.3%
Asian/Pacific Islander	8	2.6%	8	0.9%	16	1.4%
Hispanic	5	1.6%	8	0.9%	13	1.1%
Unknown		0.0%		0.0%	0	0.0%
<b>Total Students</b>	<b>4,933</b>	<b>100%</b>	<b>1,359</b>	<b>100%</b>	<b>6,292</b>	<b>100%</b>
White, non-Hispanic	3,311	67.1%	1,024	75.3%	4,335	68.9%
Black, non-Hispanic	1,331	27.0%	284	20.9%	1,615	25.7%
International	121	2.5%	17	1.3%	138	2.2%
American Indian	22	0.4%	5	0.4%	27	0.4%
Asian/Pacific Islander	75	1.5%	10	0.7%	85	1.4%
Hispanic	73	1.5%	19	1.4%	92	1.5%
Unknown	0	0.0%	0	0.0%	0	0.0%

**HEADCOUNT ENROLLMENT  
FALL 1997 - FALL 2006**

ETHNIC CATEGORY	1997		1998		1999		2000		2001	
	N	%	N	%	N	%	N	%	N	%
<b>Total Students</b>	<b>5,574</b>	<b>100%</b>	<b>5,591</b>	<b>100%</b>	<b>5,840</b>	<b>100%</b>	<b>6,062</b>	<b>100%</b>	<b>6,306</b>	<b>100%</b>
White, non-Hispanic	4,158	74.6%	4,166	74.5%	4,312	73.8%	4,465	73.7%	4,532	71.9%
Black, non-Hispanic	1,191	21.4%	1,198	21.4%	1,294	22.2%	1,349	22.3%	1,484	23.5%
International	105	1.9%	96	1.7%	104	1.8%	119	2.0%	135	2.1%
American Indian	22	0.4%	28	0.5%	22	0.4%	19	0.3%	19	0.3%
Asian/Pacific Islander	44	0.8%	55	1.0%	57	1.0%	55	0.9%	65	1.0%
Hispanic	54	1.0%	48	0.9%	51	0.9%	55	0.9%	62	1.0%
Unknown	0	0.0%	0	0.0%	0	0.0%	0	0.0%	9	0.1%

ETHNIC CATEGORY	2002		2003		2004		2005		2006	
	N	%	N	%	N	%	N	%	N	%
<b>Total Students</b>	<b>6,462</b>	<b>100%</b>	<b>6,558</b>	<b>100%</b>	<b>6,447</b>	<b>100%</b>	<b>6,480</b>	<b>100%</b>	<b>6,292</b>	<b>100%</b>
White, non-Hispanic	4,557	71.9%	4,616	70.4%	4,501	69.8%	4,495	69.4%	4,335	68.9%
Black, non-Hispanic	1,571	23.5%	1,627	24.8%	1,634	25.3%	1,638	25.3%	1,615	25.7%
International	137	2.1%	139	2.1%	137	2.1%	158	2.4%	138	2.2%
American Indian	23	0.3%	24	0.4%	30	0.5%	27	0.4%	27	0.4%
Asian/Pacific Islander	71	1.0%	63	1.0%	61	0.9%	83	1.3%	85	1.4%
Hispanic	68	1.0%	78	1.2%	75	1.2%	79	1.2%	92	1.5%
Unknown	35	0.1%	11	0.2%	9	0.1%	0	0.0%	0	0.0%



**AVERAGE WINTHROP STUDENT AGE  
1997 - 2006**

LEVEL	1997	1998	1999	2000	2001	2002	2003	2004	2005	2006
Undergraduate	21.4	21.3	21.6	21.6	21.6	21.6	21.4	21.5	21.5	21.3
Graduate	33.5	32.5	33.5	34.3	34.4	34.5	34.4	33.0	33.0	33.0

**UNDERGRADUATE HEADCOUNT ENROLLMENT  
BY AGE OF STUDENTS  
FALL 2006**

Age	Winthrop		Winthrop Cum FT %	Winthrop		Winthrop Cum PT %
	FT #	FT %		PT #	PT %	
under 18	13	0.3%	0.3%	142	29.0%	29.0%
18 - 19	1,831	39.6%	39.9%	39	8.0%	36.9%
20 - 21	1,710	37.0%	76.9%	17	3.5%	40.4%
22 - 24	794	17.2%	94.0%	90	18.4%	58.8%
25 - 29	159	3.4%	97.5%	63	12.9%	71.6%
30 - 34	51	1.1%	98.6%	36	7.3%	79.0%
35 - 39	28	0.6%	99.2%	31	6.3%	85.3%
40 - 49	32	0.7%	99.9%	48	9.8%	95.1%
50 - 64	6	0.1%	100.0%	17	3.5%	98.6%
65 and older	0	0.0%	100.0%	7	1.4%	100.0%
Unknown	0	0.0%	100.0%	0	0.0%	100.0%
Total	4,624	100.0%	100.0%	490	100.0%	100.0%

Note: State percentiles are for all S.C. Public Senior Institutions.

**UNDERGRADUATE STUDENTS AGE 25 AND OLDER  
FALL 1997-2006**

	1997	1998	1999	2000	2001	2002	2003	2004	2005	2006
<b>Number</b>	468	527	550	547	548	555	530	558	521	491
<b>Percent</b>	11%	12.14%	11.93%	11.73%	11.33%	10.98%	10.27%	10.81%	10.09%	9.51%

**GRADUATE HEADCOUNT ENROLLMENT  
BY AGE OF STUDENTS  
FALL 2006**

Age	Winthrop		Winthrop Cum FT %	Winthrop		Winthrop Cum PT %
	FT #	FT %		PT #	PT %	
under 18	0	0.0%	0.0%	0	0.0%	0.0%
18 - 19	0	0.0%	0.0%	0	0.0%	0.0%
20 - 21	37	11.9%	11.9%	44	5.1%	5.1%
22 - 24	128	41.0%	52.9%	184	21.2%	26.2%
25 - 29	62	19.9%	72.8%	185	21.3%	47.5%
30 - 34	35	11.2%	84.0%	119	13.7%	61.2%
35 - 39	28	9.0%	92.9%	99	11.4%	72.6%
40 - 49	18	5.8%	98.7%	140	16.1%	88.7%
50 - 64	4	1.3%	100.0%	87	10.0%	98.7%
65 and older	0	0.0%	100.0%	11	1.3%	100.0%
Unknown	0	0.0%	100.0%	0	0.0%	100.0%

Total	312	100.0%	100.0%	869	100.0%	100.0%
-------	-----	--------	--------	-----	--------	--------

Note: State percentiles are for all S.C. Public Senior Institutions.

## HEADCOUNT ENROLLMENT BY CLASS & SEMESTER

### FALL

LEVEL / CLASS	1996	1997	1998	1999	2000	2001	2002	2003	2004	2005	2006
<b>Undergraduate</b>	<b>4,182</b>	<b>4,294</b>	<b>4,340</b>	<b>4,611</b>	<b>4,650</b>	<b>4,838</b>	<b>5,056</b>	<b>5,161</b>	<b>5,213</b>	<b>5,187</b>	<b>5,111</b>
New Freshmen	819	912	836	971	905	946	1,073	1,074	1,001	1,019	1,183
Other Freshman	152	146	142	162	199	172	156	128	156	118	119
Sophomore	1,043	1,028	1,121	1,099	1,146	1,105	1,112	1,239	1,210	1,107	1,115
Junior	901	918	910	974	1,039	1,157	1,186	1,143	1,254	1,227	1,070
Senior	999	993	1,025	1,096	1,097	1,164	1,299	1,345	1,336	1,422	1,400
UG Special	268	297	306	309	264	294	230	232	256	294	224
<b>Graduate</b>	<b>1,220</b>	<b>1,280</b>	<b>1,251</b>	<b>1,229</b>	<b>1,412</b>	<b>1,468</b>	<b>1,406</b>	<b>1,397</b>	<b>1,234</b>	<b>1,293</b>	<b>1,181</b>
<b>Total</b>	<b>5,402</b>	<b>5,574</b>	<b>5,591</b>	<b>5,840</b>	<b>6,062</b>	<b>6,306</b>	<b>6,462</b>	<b>6,558</b>	<b>6,447</b>	<b>6,480</b>	<b>6,292</b>

### SPRING

LEVEL / CLASS	1996	1997	1998	1999	2000	2001	2002	2003	2004	2005	2006
<b>Undergraduate</b>	<b>3,798</b>	<b>3,748</b>	<b>3,885</b>	<b>3,984</b>	<b>4,182</b>	<b>4,337</b>	<b>4,513</b>	<b>4,749</b>	<b>4,861</b>	<b>4,811</b>	<b>4,704</b>
Freshman	772	752	813	754	848	831	897	1,044	1,005	915	901
Sophomore	874	926	954	1,010	960	1,012	953	986	1,060	1,066	973
Junior	913	887	929	926	1,043	1,056	1,125	1,108	1,141	1,177	1,166
Senior	1,051	1,067	1,042	1,111	1,091	1,180	1,280	1,386	1,422	1,407	1,453
UG Special	188	116	147	183	240	258	258	225	233	246	211
<b>Graduate</b>	<b>1,402</b>	<b>1,121</b>	<b>1,002</b>	<b>957</b>	<b>947</b>	<b>937</b>	<b>936</b>	<b>1,033</b>	<b>929</b>	<b>996</b>	<b>891</b>
<b>Total</b>	<b>5,200</b>	<b>4,869</b>	<b>4,887</b>	<b>4,941</b>	<b>5,129</b>	<b>5,274</b>	<b>5,449</b>	<b>5,782</b>	<b>5,790</b>	<b>5,807</b>	<b>5,595</b>

### SUMMER

LEVEL / CLASS	1996	1997	1998	1999	2000	2001	2002	2003	2004	2005	2006
<b>Undergraduate</b>	<b>1,103</b>	<b>1,064</b>	<b>1,049</b>	<b>1,142</b>	<b>1,176</b>	<b>1,267</b>	<b>1,297</b>	<b>1,309</b>	<b>1,237</b>	<b>1,091</b>	<b>1,051</b>
Freshman	21	31	23	32	22	29	33	40	40	25	28
Sophomore	138	152	156	175	167	170	183	243	185	183	126
Junior	267	275	282	325	338	385	382	321	341	268	290
Senior	570	528	511	528	580	607	643	640	605	568	570
UG Special	107	78	77	82	69	76	56	65	66	47	37
<b>Graduate</b>	<b>1,304</b>	<b>1,125</b>	<b>1,352</b>	<b>1,087</b>	<b>1,006</b>	<b>1,011</b>	<b>1,043</b>	<b>1,186</b>	<b>1,093</b>	<b>864</b>	<b>955</b>
<b>Total</b>	<b>2,407</b>	<b>2,189</b>	<b>2,401</b>	<b>2,229</b>	<b>2,182</b>	<b>2,278</b>	<b>2,340</b>	<b>2,495</b>	<b>2,330</b>	<b>1,955</b>	<b>2,006</b>

## ENROLLMENT AND CREDIT HOUR PRODUCTION FALL 1997 - FALL 2006

LEVEL	1998		1999		2000		2001		2002	
	HC	CHP	HC	CHP	HC	CHP	HC	CHP	HC	CHP
<b>Undergraduate</b>	4,340	59,049	4,611	62,943	4,650	64,354	4,838	67,034	5,056	71,006
Full-Time	3,660	55,698	3,940	59,566	4,032	61,159	4,201	63,831	4,448	67,722
Part-Time	680	3,351	671	3,377	618	3,195	637	3,203	608	3,284
<b>Graduate</b>	1,251	6,187	1,229	6,112	1,412	7,644	1,468	6,915	1,406	6,891
Full-Time	251	2,636	281	2,870	289	2,978	270	2,783	303	3,003
Part-Time	1,000	3,551	948	3,242	1,123	4,666	1,198	4,132	1,103	3,888

LEVEL	2003		2004		2005		2006		2007	
	HC	CHP	HC	CHP	HC	CHP	HC	CHP	HC	CHP
<b>Undergraduate</b>	5,161	73,086	5,213	73,807	5,187	73,547	5,111	73,352		
Full-Time	4,597	70,120	4,617	70,650	4,587	70,507	4,621	70,779		
Part-Time	564	2,966	596	3,157	600	3,040	490	2,573		
<b>Graduate</b>	1,397	7,207	1,234	6,701	1,293	6,793	1,181	6,638		
Full-Time	328	3,309	327	3,267	328	3,268	312	3,211		
Part-Time	1,069	3,898	907	3,434	965	3,525	869	3,427		

Note: Headcount and CHP by classification of student.

**RESIDENCE HALL ENROLLMENT  
COMPARED TO HEADCOUNT ENROLLMENT  
BY CLASS  
FALL 2006**

CLASS LEVEL	MALE RESIDENTS	FEMALE RESIDENTS	TOTAL RESIDENTS	HEADCOUNT ENROLLMENT	% RESIDENTS/ HEADCOUNT
<b>Undergraduates</b>	<b>628</b>	<b>1,629</b>	<b>2,257</b>	<b>5,111</b>	<b>44.2%</b>
New Freshmen	277	796	1,073	1,183	90.7%
Other Freshmen	21	32	53	119	44.5%
Sophomore	176	451	627	1,115	56.2%
Junior	82	192	274	1,070	25.6%
Senior	70	154	224	1,400	16.0%
Specials	2	4	6	224	2.7%
<b>Graduates</b>	<b>8</b>	<b>12</b>	<b>20</b>	<b>1,181</b>	<b>1.7%</b>
<b>Grand Total</b>	<b>636</b>	<b>1,641</b>	<b>2,277</b>	<b>6,292</b>	<b>36.2%</b>

**FALL 2005**

CLASS LEVEL	MALE RESIDENTS	FEMALE RESIDENTS	TOTAL RESIDENTS	HEADCOUNT ENROLLMENT	% RESIDENTS/ HEADCOUNT
<b>Undergraduates</b>	<b>609</b>	<b>1,528</b>	<b>2,137</b>	<b>5,187</b>	<b>41.2%</b>
New Freshmen	257	638	895	1,007	88.9%
Other Freshmen	17	39	56	130	43.1%
Sophomore	160	407	567	1,107	51.2%
Junior	88	251	339	1,227	27.6%
Senior	83	189	272	1,422	19.1%
Specials	4	4	8	294	2.7%
<b>Graduates</b>	<b>7</b>	<b>13</b>	<b>20</b>	<b>1,293</b>	<b>1.5%</b>
<b>Grand Total</b>	<b>616</b>	<b>1,541</b>	<b>2,157</b>	<b>6,480</b>	<b>33.3%</b>

**UNDERGRADUATE  
RESIDENCE/NON-RESIDENCE HALL ENROLLMENT  
FALL 1997 - FALL 2006**

RESIDENCY	1997	1998	1999	2000	2001	2002	2003	2004	2005	2006
Residence Hall	2,054	2,035	2,159	2,152	2,236	2,303	2,466	2,229	2,137	2,257
% of Total	47.8%	46.9%	46.8%	46.3%	46.2%	45.5%	47.8%	42.8%	41.2%	44.2%
Non-Residence Hall	2,240	2,305	2,452	2,498	2,602	2,753	2,695	2,984	3,050	2,854
% of Total	52.2%	53.1%	53.2%	53.7%	53.8%	54.5%	52.2%	57.2%	58.8%	55.8%
<b>Total UG Enrollment</b>	<b>4,294</b>	<b>4,340</b>	<b>4,611</b>	<b>4,650</b>	<b>4,838</b>	<b>5,056</b>	<b>5,161</b>	<b>5,213</b>	<b>5,187</b>	<b>5,111</b>

**HEADCOUNT ENROLLMENT  
BY STATE OF ORIGIN  
FALL 1996 - FALL 2006**

YEAR	S.C. RESIDENTS						OUT-OF-STATE RESIDENTS						TOTAL STUDENTS					
	UG		GRAD		TOTAL		UG		GRAD		TOTAL		UG		GRAD		TOTAL	
	#	%	#	%	#	%	#	%	#	%	#	%	#	%	#	%	#	%
1996	3,549	80.0%	885	20.0%	4,434	82.1%	633	65.4%	335	34.6%	968	17.9%	4,182	77.4%	1,220	22.6%	5,402	100%
1997	3,643	78.8%	978	21.2%	4,621	82.9%	651	68.3%	302	31.7%	953	17.1%	4,294	77.0%	1,280	23.0%	5,574	100%
1998	3,775	79.1%	998	20.9%	4,773	85.4%	565	69.1%	253	30.9%	818	14.6%	4,340	77.6%	1,251	22.4%	5,591	100%
1999	4,024	80.3%	990	19.7%	5,014	85.9%	587	71.1%	239	28.9%	826	14.1%	4,611	79.0%	1,229	21.0%	5,840	100%
2000	4,066	77.8%	1157	22.2%	5,223	86.8%	538	67.8%	255	32.2%	793	13.2%	4,604	76.5%	1,412	23.5%	6,016	100%
2001	4,196	78.3%	1162	21.7%	5,358	84.9%	644	67.8%	306	32.2%	950	15.1%	4,840	76.7%	1,468	23.3%	6,308	100%
2002	4,374	80.0%	1094	20.0%	5,468	84.6%	682	68.6%	312	31.4%	994	15.4%	5,056	78.2%	1,406	21.8%	6,462	100%
2003	4,421	80.1%	1101	19.9%	5,522	84.2%	740	71.4%	296	28.6%	1,036	15.8%	5,161	78.7%	1,397	21.3%	6,558	100%
2004	4,514	82.6%	950	17.4%	5,464	84.8%	699	71.1%	284	28.9%	983	15.2%	5,213	80.9%	1,234	19.1%	6,447	100%
2005	4,483	82.1%	980	17.9%	5,463	84.3%	704	69.2%	313	30.8%	1,017	15.7%	5,187	80.0%	1,293	20.0%	6,480	100%
2006	4,450	83.6%	872	16.4%	5,322	84.6%	661	68.1%	309	31.9%	970	15.4%	5,111	81.2%	1,181	18.8%	6,292	100%

Note: State of origin is state of residence at time of entry.

**COUNTRY OF ORIGIN OF INTERNATIONAL STUDENTS  
FALL 2002 - FALL 2006**

COUNTRY	FALL 2002			FALL 2003			FALL 2004			FALL 2005			FALL 2006			% of		
	UG	G	Tot	UG	G	Tot	UG	G	Tot	UG	G	Tot	UG	G	Tot	UG	G	Total
Armenia	0	0	0	0	0	0	0	0	0	1	0	1	0	0	0	0.19%	0.00%	0.14%
Australia	0	0	0	0	0	0	0	0	0	3	0	3	3	0	3	0.00%	0.00%	0.85%
Austria	1	0	1	0	0	0	0	0	0	1	0	1	2	0	2	0.78%	0.00%	0.56%
Bahamas	0	1	1	0	0	0	0	0	0	1	0	1	1	1	2	0.39%	1.03%	0.56%
Bahrain	0	0	0	0	0	0	0	1	1	0	1	1	0	0	0	0.00%	1.03%	0.28%
Bolivia	0	0	0	0	0	0	0	0	0	1	0	1	2	0	2	0.58%	0.00%	0.42%
Brazil	8	1	9	9	1	10	7	0	7	10	2	12	10	2	12	8.56%	3.08%	7.05%
Bulgaria	5	2	7	2	0	2	1	2	3	1	3	4	0	1	1	1.75%	4.10%	2.40%
Cameroon	0	0	0	0	0	0	0	0	0	0	1	1	0	0	0	0.00%	0.51%	0.14%
Canada	20	2	22	21	2	23	19	6	25	24	4	28	20	3	23	20.23%	8.72%	17.07%
Chile	0	0	0	0	0	0	0	0	0	0	0	0	1	0	1	0.19%	0.00%	0.14%
China, Republic of	2	4	6	3	2	5	2	2	4	1	2	3	0	1	1	1.56%	5.64%	2.68%
Colombia	4	1	5	4	1	5	3	0	3	5	1	6	0	1	1	3.11%	2.05%	2.82%
Croatia	0	0	0	0	0	0	1	0	1	1	0	1	1	0	1	0.58%	0.00%	0.42%
Czech Republic	0	0	0	0	0	0	0	0	0	0	0	0	0	0	0	0.00%	0.00%	0.00%
Denmark	0	0	0	0	0	0	1	0	1	2	0	2	1	0	1	0.78%	0.00%	0.56%
Ecuador	0	0	0	0	0	0	0	1	1	1	0	1	0	0	0	0.19%	0.51%	0.28%
El Salvador	0	0	0	0	0	0	0	0	0	1	0	1	0	0	2	0.19%	0.00%	0.42%
Finland	0	0	0	1	0	1	0	0	0	2	0	2	2	0	2	0.97%	0.00%	0.71%
France	9	5	14	4	6	10	10	3	13	6	4	10	11	1	12	7.78%	9.74%	8.32%
Gabon	0	0	0	0	1	1	1	0	1	1	0	1	0	0	0	0.39%	0.51%	0.42%
Georgia	0	0	0	1	0	1	0	0	0	0	0	0	0	0	0	0.19%	0.00%	0.14%
Germany	3	2	5	2	0	2	1	0	1	4	0	4	6	0	6	3.11%	1.03%	2.54%
Ghana	0	0	0	3	0	3	1	0	1	1	0	1	1	0	1	1.17%	0.00%	0.85%
Haiti	0	0	0	0	0	0	0	0	0	0	0	0	0	0	0	0.00%	0.00%	0.00%
Hong Kong	1	0	1	2	0	2	2	0	2	1	0	1	1	1	2	1.36%	0.51%	1.13%
Hungary	2	0	2	1	0	1	0	1	1	0	1	1	0	1	1	1.58%	1.54%	0.85%
Iceland	3	1	4	3	1	4	0	0	0	0	0	0	0	0	0	1.17%	1.03%	1.13%
India	3	3	6	2	3	5	3	5	8	4	5	9	3	3	6	2.92%	9.74%	4.80%
Indonesia	0	1	1	0	0	0	0	0	0	0	0	0	0	0	0	0.00%	0.51%	0.14%
Iran	0	0	0	0	0	0	0	0	0	0	0	0	0	0	0	0.00%	0.00%	0.00%
Ireland	3	0	3	2	0	2	4	0	4	3	0	3	2	0	2	2.72%	0.00%	1.97%
Italy	0	1	1	2	1	3	0	0	0	0	0	0	0	0	0	0.39%	1.03%	0.56%
Jamaica	3	0	3	3	1	4	2	1	3	0	1	1	2	2	4	1.95%	2.56%	2.12%
Japan	2	1	3	3	1	4	3	1	4	0	2	2	0	2	2	1.56%	3.59%	2.12%
Kazakhstan	0	0	0	1	0	1	0	0	0	0	0	0	0	0	0	0.19%	0.00%	0.14%
Kenya	2	0	2	3	0	3	3	0	3	5	1	6	4	2	6	3.31%	1.54%	2.82%
Korea, Republic of	1	1	2	2	1	3	2	0	2	2	0	2	2	0	2	1.75%	1.03%	1.55%
Kyrgyzstan	0	0	0	0	0	0	0	0	0	0	0	0	1	0	1	0.19%	0.00%	0.14%
Lebanon	0	0	0	0	0	0	0	0	0	0	0	0	0	0	0	0.00%	0.00%	0.00%
Liberia	2	1	3	2	2	4	2	1	3	2	1	3	1	0	1	1.75%	2.56%	1.97%
Lithuania	0	0	0	0	0	0	0	0	0	0	0	0	0	1	1	0.00%	0.51%	0.14%
Morocco	0	1	1	0	1	1	1	0	1	0	0	0	0	0	0	0.19%	1.03%	0.42%
Mexico	0	0	0	0	0	0	0	0	0	0	0	0	0	1	1	0.00%	0.51%	0.14%
Nepal	0	0	0	1	0	1	1	0	1	1	0	1	1	0	1	0.78%	0.00%	0.56%
Netherlands	0	1	1	0	1	1	0	0	0	1	1	2	1	1	2	0.39%	2.05%	0.85%
New Zealand	1	0	1	2	0	2	1	0	1	1	0	1	1	0	1	1.17%	0.00%	0.85%
Niger	0	0	0	0	1	1	0	1	1	0	0	0	0	0	0	0.00%	1.03%	0.28%
Nigeria	2	0	2	3	1	4	3	2	5	3	0	3	3	0	3	2.72%	1.54%	2.40%
Norway	2	0	2	0	0	0	0	0	0	1	3	4	0	0	0	0.58%	1.54%	0.85%
Panama	0	0	0	0	0	0	0	0	0	0	0	0	0	0	0	0.00%	0.00%	0.00%
Peru	2	0	2	1	1	2	3	2	5	1	2	3	1	3	4	1.56%	4.10%	2.26%
Philippines	1	2	3	0	1	1	0	2	2	1	1	2	0	1	1	1.39%	3.59%	1.27%
Poland	2	1	3	2	1	3	2	1	3	0	2	2	0	1	1	1.17%	3.08%	1.69%
Portugal	0	0	0	0	1	1	0	0	0	0	0	0	0	0	0	0.00%	0.51%	0.14%
Romania	0	0	0	0	0	0	0	0	0	4	0	4	7	0	7	2.14%	0.00%	1.55%
Russia	0	1	1	0	1	1	1	0	1	1	0	1	0	0	0	0.39%	1.03%	0.56%
Saudi Arabia	0	0	0	1	0	1	0	0	0	0	0	0	0	1	1	0.19%	0.51%	0.28%
Senegal	1	0	1	0	0	0	0	1	1	1	1	2	1	0	1	0.58%	1.03%	0.71%
Sierra Leone	0	0	0	0	0	0	0	1	1	0	1	1	0	0	0	0.00%	1.03%	0.28%
Slovakia	0	0	0	0	1	1	0	1	1	0	0	0	0	0	0	0.00%	1.03%	0.28%
South Africa	0	0	0	0	0	0	1	0	1	1	0	1	1	0	1	0.58%	0.00%	0.42%
Spain	1	0	1	1	2	3	2	2	4	2	1	3	3	0	3	1.75%	2.56%	1.97%
Sri Lanka	1	0	1	0	0	0	0	0	0	0	0	0	0	0	0	0.19%	0.00%	0.14%
Sweden	3	1	4	1	0	1	0	0	0	1	0	1	1	0	1	1.17%	0.51%	0.99%
Switzerland	0	0	0	0	0	0	1	0	1	1	0	1	1	0	1	0.58%	0.00%	0.42%
Taiwan	1	1	2	0	2	2	0	2	2	0	1	1	0	0	0	0.19%	3.08%	0.99%
Tanzania	0	0	0	2	0	2	1	0	1	1	0	1	1	0	1	0.97%	0.00%	0.71%
Thailand	0	0	0	0	1	1	0	2	2	0	1	1	0	0	0	0.00%	2.05%	0.56%
Tonga	0	0	0	0	0	0	0	0	0	1	0	1	0	0	0	0.19%	0.00%	0.14%
Trinidad and Tobago	0	0	0	0	0	0	0	0	0	0	0	0	0	0	0	0.00%	0.00%	0.00%
Uganda	0	0	0	0	0	0	0	0	0	0	0	0	2	0	2	0.39%	0.00%	0.28%
Ukraine	2	0	2	1	0	1	1	1	2	0	1	1	0	1	1	0.78%	1.54%	0.99%
United Kingdom	6	2	8	7	2	9	6	1	7	4	0	4	2	0	2	4.86%	2.56%	4.23%
Uzbekistan	0	0	0	0	0	0	1	0	1	1	0	1	1	0	1	0.58%	0.00%	0.42%
Venezuela	0	0	0	0	0	0	0	0	0	0	0	0	0	2	2	0.00%	0.00%	0.28%

Yugoslavia	0	0	0	0	0	0	0	0	0	0	0	0	0	0	0	0.00%	0.00%	0.00%
Zambia	0	0	0	0	0	0	0	0	0	1	0	1	1	0	1	0.39%	0.00%	0.28%
Zimbabwe	1	0	1	1	0	1	1	0	1	2	0	2	2	0	2	1.36%	0.00%	0.99%
<b>TOTAL</b>	<b>100</b>	<b>37</b>	<b>137</b>	<b>99</b>	<b>40</b>	<b>139</b>	<b>94</b>	<b>43</b>	<b>137</b>	<b>114</b>	<b>44</b>	<b>158</b>	<b>107</b>	<b>31</b>	<b>138</b>	<b>100.0%</b>	<b>100.0%</b>	<b>100.0%</b>

\* Permanent residents not counted.



# GEOGRAPHICAL DISTRIBUTION OF STUDENTS BY STATE FALL 2002 - FALL 2006

STATE	FALL 2002			FALL 2003			FALL 2004			FALL 2005			FALL 2006			% of 5 Year Total		
	UG	G	Total	UG	G	Total	UG	G	Total	UG	G	Total	UG	G	Total	UG	G	Total
Alabama	2	0	2	6	1	7	4	1	5	4	0	4	3	0	3	0.07%	0.03%	0.07%
Alaska	0	0	0	1	0	1	2	0	2	1	0	1	1	0	1	0.02%	0.00%	0.02%
Arizona	1	0	1	2	0	2	3	0	3	3	0	3	3	0	3	0.05%	0.00%	0.04%
Arkansas	1	0	1	1	1	2	0	0	0	0	0	0	1	0	1	0.01%	0.02%	0.01%
California	7	0	7	6	1	7	5	0	5	4	1	5	6	1	7	0.11%	0.05%	0.10%
Colorado	4	0	4	1	0	1	1	0	1	2	0	2	3	0	3	0.04%	0.00%	0.03%
Connecticut	7	0	7	8	0	8	7	0	7	8	0	8	4	0	4	0.13%	0.00%	0.11%
Delaware	1	0	1	3	0	3	4	0	4	4	0	4	2	0	2	0.05%	0.00%	0.04%
Florida	57	7	64	56	6	62	37	4	41	42	5	47	39	2	41	0.90%	0.37%	0.79%
Georgia	64	9	73	73	9	82	63	6	69	63	6	69	50	6	56	1.21%	0.55%	1.08%
Hawaii	1	0	1	1	0	1	2	0	2	2	0	2	2	0	2	0.03%	0.00%	0.02%
Idaho	0	0	0	0	0	0	0	0	0	1	0	1	1	0	1	0.01%	0.00%	0.01%
Illinois	10	1	11	12	3	15	8	2	10	9	3	12	8	1	9	0.18%	0.15%	0.18%
Indiana	4	2	6	6	0	6	3	0	3	3	0	3	2	1	3	0.07%	0.05%	0.07%
Iowa	1	0	1	2	0	2	4	0	4	6	0	6	5	0	5	0.07%	0.00%	0.06%
Kansas	2	0	2	5	1	6	3	1	4	0	1	1	1	0	1	0.04%	0.05%	0.04%
Kentucky	8	2	10	6	2	8	5	3	8	8	1	9	5	1	6	0.12%	0.14%	0.13%
Louisiana	5	1	6	2	1	3	1	0	1	4	0	4	1	0	1	0.05%	0.03%	0.05%
Maine	0	0	0	3	0	3	1	0	1	0	0	0	1	0	1	0.02%	0.00%	0.02%
Maryland	55	2	57	58	1	59	59	2	61	49	2	51	51	1	52	1.06%	0.12%	0.87%
Massachusetts	2	1	3	2	0	2	8	0	8	8	0	8	10	0	10	0.12%	0.02%	0.10%
Michigan	4	2	6	3	1	4	2	1	3	2	5	7	4	3	7	0.06%	0.18%	0.08%
Minnesota	2	0	2	6	0	6	5	0	5	8	0	8	3	0	3	0.09%	0.00%	0.07%
Mississippi	6	0	6	6	0	6	4	0	4	2	0	2	3	0	3	0.08%	0.00%	0.07%
Missouri	1	1	2	1	1	2	3	1	4	1	1	2	3	1	4	0.03%	0.08%	0.04%
Montana	1	0	1	0	0	0	2	0	2	1	0	1	0	0	0	0.02%	0.00%	0.01%
Nebraska	2	0	2	4	0	4	2	0	2	0	1	1	1	1	2	0.03%	0.03%	0.03%
Nevada	0	0	0	0	0	0	0	0	0	5	0	5	0	0	0	0.02%	0.00%	0.02%
New Hampshire	2	0	2	0	0	0	2	0	2	2	0	2	9	0	9	0.06%	0.00%	0.05%
New Jersey	14	1	15	14	0	14	12	1	13	14	2	16	19	2	21	0.28%	0.09%	0.24%
New Mexico	1	0	1	3	0	3	3	1	4	3	1	4	3	0	3	0.05%	0.03%	0.05%
New York	33	4	37	35	3	38	30	9	39	27	14	41	31	7	38	0.61%	0.57%	0.60%
North Carolina	113	227	340	130	212	342	130	200	330	135	200	335	121	233	354	2.44%	16.45%	5.27%
Ohio	39	4	43	40	3	43	48	2	50	49	6	55	43	2	45	0.85%	0.26%	0.73%
Oklahoma	2	0	2	3	0	3	3	0	3	1	0	1	1	0	1	0.04%	0.00%	0.03%
Oregon	2	0	2	2	0	2	4	0	4	3	0	3	3	0	3	0.05%	0.00%	0.04%
Pennsylvania	22	4	26	25	2	27	25	1	26	21	4	25	20	3	23	0.44%	0.21%	0.39%
Rhode Island	0	0	0	1	1	2	2	1	3	1	0	1	1	1	2	0.02%	0.05%	0.02%
South Carolina	4,374	1,094	5,468	4,421	1,101	5,522	4,514	950	5,464	4,483	980	5,463	4,450	872	5,322	86.31%	76.66%	84.37%
South Dakota	0	0	0	0	0	0	0	0	0	0	0	0	0	0	0	0.00%	0.00%	0.00%
Tennessee	15	1	16	16	1	17	18	2	20	21	2	23	15	2	17	0.33%	0.12%	0.29%
Texas	7	1	8	9	0	9	10	0	10	9	0	9	11	1	12	0.18%	0.03%	0.15%
Utah	1	0	1	2	0	2	2	0	2	2	0	2	2	0	2	0.03%	0.00%	0.03%
Vermont	2	0	2	2	0	2	3	0	3	2	0	2	1	0	1	0.04%	0.00%	0.03%
Virginia	57	2	59	61	4	65	53	1	54	53	6	59	51	6	57	1.07%	0.29%	0.91%
Washington	3	0	3	4	0	4	4	0	4	2	0	2	1	0	1	0.05%	0.00%	0.04%
West Virginia	14	1	15	13	2	15	13	1	14	9	2	11	7	2	9	0.22%	0.12%	0.20%
Wisconsin	3	0	3	4	0	4	4	1	5	2	2	4	1	1	2	0.05%	0.06%	0.06%
Wyoming	0	0	0	0	0	0	0	0	0	0	0	0	0	0	0	0.00%	0.00%	0.00%
<b>Total U.S. States</b>	<b>4,952</b>	<b>1,367</b>	<b>6,319</b>	<b>5,059</b>	<b>1,357</b>	<b>6,416</b>	<b>5,118</b>	<b>1,191</b>	<b>6,309</b>	<b>5,079</b>	<b>1,245</b>	<b>6,324</b>	<b>5,003</b>	<b>1,150</b>	<b>6,153</b>	<b>97.83%</b>	<b>96.81%</b>	<b>97.63%</b>
Dist. of Columbia	2	0	2	1	0	1	1	0	1	1	0	1	1	0	0	0.02%	0.00%	0.02%
International	100	37	137	99	40	139	94	43	137	148	55	203	107	31	138	2.13%	3.16%	2.34%
Puerto Rico	1	0	1	0	0	0	0	0	0	0	0	0	0	0	0	0.00%	0.00%	0.00%
Virgin Islands of the U.S	0	0	0	0	0	0	0	0	0	0	0	0	0	0	0	0.00%	0.00%	0.00%
Unknown	1	2	3	2	0	2	0	0	0	0	0	0	0	0	1	0.01%	0.03%	0.02%
<b>Grand Total</b>	<b>5,056</b>	<b>1,406</b>	<b>6,462</b>	<b>5,161</b>	<b>1,397</b>	<b>6,558</b>	<b>5,213</b>	<b>1,234</b>	<b>6,447</b>	<b>5,228</b>	<b>1,300</b>	<b>6,528</b>	<b>5,111</b>	<b>1,181</b>	<b>6,292</b>	<b>100.0%</b>	<b>100.0%</b>	<b>100.0%</b>

**GEOGRAPHICAL DISTRIBUTION OF STUDENTS  
BY S.C. COUNTY  
FALL 2002 - FALL 2006**

COUNTY	FALL 2002			FALL 2003			FALL 2004			FALL 2005			FALL 2006			% of 5 Year Total		
	UG	G	Total	UG	G	Total	UG	G	Total	UG	G	Total	UG	G	Total	UG	G	Total
Abbeville	12	1	13	14	0	14	12	0	12	16	12	28	9	13	22	0.24%	0.40%	0.28%
Aiken	99	18	117	105	14	119	97	13	110	80	11	91	84	12	96	1.81%	1.04%	1.65%
Allendale	10	2	12	9	2	11	5	0	5	8	0	8	4	0	4	0.14%	0.06%	0.12%
Anderson	57	9	66	63	7	70	70	11	81	62	23	85	80	14	94	1.29%	0.98%	1.23%
Bamberg	3	0	3	2	1	3	3	1	4	3	0	3	2	0	2	0.05%	0.03%	0.05%
Barnwell	20	2	22	18	2	20	18	0	18	12	3	15	10	5	15	0.30%	0.18%	0.28%
Beaufort	55	28	83	65	132	197	69	73	142	91	45	136	89	3	92	1.43%	4.32%	2.02%
Berkeley	86	14	100	96	8	104	105	7	112	125	4	129	123	3	126	2.08%	0.55%	1.77%
Calhoun	10	1	11	7	3	10	11	2	13	13	0	13	12	1	11	0.21%	0.11%	0.18%
Charleston	238	27	265	280	23	303	257	20	277	280	18	298	296	19	315	5.25%	1.64%	4.52%
Cherokee	22	10	32	30	12	42	39	7	46	33	3	36	45	2	47	0.66%	0.52%	0.63%
Chester	122	78	200	119	32	151	128	31	159	109	32	141	113	14	127	2.30%	2.87%	2.41%
Chesterfield	71	37	108	80	20	100	71	26	97	73	16	89	76	16	0	1.44%	1.77%	1.22%
Clarendon	20	1	21	26	6	32	22	4	26	20	11	31	21	8	29	0.42%	0.46%	0.43%
Colleton	29	13	42	28	3	31	33	1	34	33	2	35	31	2	33	0.60%	0.32%	0.54%
Darlington	64	6	70	55	12	67	48	10	58	35	2	37	30	7	37	0.90%	0.57%	0.83%
Dillon	27	6	33	27	8	35	24	12	36	23	14	37	26	14	40	0.49%	0.83%	0.56%
Dorchester	103	6	109	127	5	132	111	7	118	125	8	133	135	4	139	2.34%	0.46%	1.96%
Edgefield	8	9	17	7	0	7	9	0	9	8	0	8	8	1	9	0.16%	0.15%	0.16%
Fairfield	25	24	49	27	12	39	29	5	34	28	11	39	24	10	34	0.52%	0.95%	0.60%
Florence	114	13	127	103	21	124	92	16	108	77	11	88	89	13	102	1.85%	1.14%	1.70%
Georgetown	45	2	47	41	5	46	56	4	60	64	1	65	58	3	61	1.03%	0.23%	0.87%
Greenville	342	30	372	344	31	375	352	27	379	316	29	345	297	37	334	6.42%	2.37%	5.60%
Greenwood	34	12	46	26	13	39	32	15	47	33	74	107	27	66	93	0.59%	2.76%	1.03%
Hampton	10	2	12	7	2	9	5	2	7	8	3	11	2	2	4	0.12%	0.17%	0.13%
Horry	70	40	110	81	42	123	87	43	130	82	25	107	97	11	108	1.62%	2.47%	1.79%
Jasper	6	0	6	8	2	10	6	0	6	2	2	4	4	1	5	0.10%	0.08%	0.10%
Kershaw	77	33	110	77	62	139	60	52	112	63	39	102	63	44	107	1.32%	3.53%	1.77%
Lancaster	164	40	204	111	34	145	159	49	208	150	36	186	138	34	172	2.81%	2.96%	2.84%
Laurens	47	4	51	46	4	50	41	4	45	39	5	44	33	8	41	0.80%	0.38%	0.72%
Lee	16	3	19	10	3	13	11	2	13	10	0	10	14	3	17	0.24%	0.17%	0.22%
Lexington	271	76	347	271	61	332	268	92	360	257	90	347	264	91	355	5.17%	6.30%	5.40%
Marion	17	3	20	14	1	15	13	0	13	15	1	16	19	6	25	0.30%	0.17%	0.28%
Marlboro	3	0	3	4	0	4	3	0	3	1	0	1	1	0	1	0.05%	0.00%	0.04%
McCormick	23	7	30	24	5	29	23	4	27	29	2	31	37	5	42	0.53%	0.35%	0.49%
Newberry	21	6	27	17	9	26	17	7	24	20	8	28	17	9	26	0.36%	0.60%	0.41%
Oconee	51	4	55	54	2	56	66	4	70	56	5	61	50	4	54	1.08%	0.29%	0.92%
Orangeburg	56	9	65	58	15	73	67	10	77	59	8	67	63	19	82	1.18%	0.94%	1.13%
Pickens	49	8	57	59	3	62	55	4	59	49	3	52	67	2	69	1.08%	0.31%	0.93%
Richland	377	70	447	396	62	458	422	68	490	402	74	476	422	75	497	7.85%	5.36%	7.35%
Saluda	9	2	11	17	1	18	15	4	19	14	1	15	14	3	17	0.27%	0.17%	0.25%
Spartanburg	156	35	191	164	28	192	158	15	173	145	14	159	158	13	171	3.04%	1.61%	2.75%
Sumter	107	13	120	111	17	128	119	9	128	110	9	119	121	8	129	2.21%	0.86%	1.94%
Union	33	4	37	32	9	41	30	11	41	53	5	58	38	4	42	0.72%	0.51%	0.68%
Williamsburg	23	4	27	28	2	30	26	2	28	29	1	30	27	0	27	0.52%	0.14%	0.44%
York	1,172	382	1,554	1,133	365	1,498	1,170	276	1,446	1,223	319	1,542	1,112	263	1,375	22.58%	24.65%	23.00%
<b>Total S.C.</b>	<b>4,374</b>	<b>1,094</b>	<b>5,468</b>	<b>4,421</b>	<b>1,101</b>	<b>5,522</b>	<b>4,514</b>	<b>950</b>	<b>5,464</b>	<b>4,483</b>	<b>980</b>	<b>5,463</b>	<b>4,450</b>	<b>872</b>	<b>5,322</b>	<b>86.45%</b>	<b>76.75%</b>	<b>84.49%</b>
Out-of-State	582	275	857	641	256	897	605	241	846	590	269	859	554	278	832	11.55%	20.26%	13.31%
International	100	37	137	99	40	139	94	43	137	114	44	158	107	31	138	2.00%	2.99%	2.20%
<b>Grand Total</b>	<b>5,056</b>	<b>1,406</b>	<b>6,462</b>	<b>5,161</b>	<b>1,397</b>	<b>6,558</b>	<b>5,213</b>	<b>1,234</b>	<b>6,447</b>	<b>5,187</b>	<b>1,293</b>	<b>6,480</b>	<b>5,111</b>	<b>1,181</b>	<b>6,292</b>	<b>100.0%</b>	<b>100.0%</b>	<b>100.0%</b>

## UNDERGRADUATE HEADCOUNT ENROLLMENT FALL 2002 - FALL 2006

COLLEGE / DEGREE PROGRAMS	2002	2003	2004	2005	2006	% OF 6 YEAR TOTAL	05 TO 06 % DIFF.
<b>ARTS &amp; SCIENCES</b>	<b>1,941</b>	<b>2,029</b>	<b>2,056</b>	<b>2,056</b>	<b>2,054</b>	<b>37.2%</b>	<b>-0.1%</b>
Biology	314	334	345	320	338	6.1%	5.6%
Chemistry	46	36	45	73	86	1.0%	17.8%
English	126	148	142	164	153	2.7%	-6.7%
Environmental Science (B.S.)	12	12	14	14	7	0.2%	-50.0%
Environmental Studies (B.A.)	4	14	14	10	15	0.2%	50.0%
General Communication Disorders	67	64	59	56	72	1.2%	28.6%
History	154	149	163	169	178	3.0%	5.3%
Human Nutrition	45	50	56	59	65	1.0%	10.2%
Integrated MKTG Communication *	108	77	112	33	33	1.3%	0.0%
Mass Communication	132	97	71	73	72	1.6%	-1.4%
Mathematics (B.A.)	26	36	31	40	23	0.6%	-42.5%
Mathematics (B.S.)	41	25	20	15	21	0.4%	40.0%
Medical Technology	2	1	*	*	*	0.0%	N/A
Modern Languages	41	45	46	65	59	0.9%	-9.2%
Philosophy & Religious Studies	33	25	26	37	33	0.6%	-10.8%
Political Science	192	182	163	175	141	3.1%	-19.4%
Pre-Engineering	6	14	11	11	7	0.2%	-36.4%
Pre-Integrated Marketing	60	61	78	75	94	1.4%	25.3%
Pre-Mass Communication	14	113	133	109	113	1.8%	3.7%
Psychology	274	284	291	313	297	5.4%	-5.1%
Science Communications	3	3	1	2	2	0.0%	0.0%
Social Work	125	114	100	97	92	1.9%	-5.2%
Sociology	116	145	135	146	153	2.6%	4.8%
<b>BUSINESS ADMINISTRATION</b>	<b>1,274</b>	<b>1,192</b>	<b>1,103</b>	<b>1,107</b>	<b>1,157</b>	<b>21.4%</b>	<b>4.5%</b>
Business Administration	977	923	884	897	939	17.0%	4.7%
Computer Science	105	100	77	76	78	1.6%	2.6%
Economics	*	9	7	8	17	0.2%	112.5%
Integrated MKTG Communication *	108	77	34	33	33	1.0%	0.0%
Sport Management *	84	83	101	93	90	1.7%	-3.2%
<b>EDUCATION</b>	<b>938</b>	<b>978</b>	<b>994</b>	<b>969</b>	<b>943</b>	<b>17.7%</b>	<b>-2.7%</b>
Business Education	2	*	*	*	*	0.0%	N/A
Early Childhood Education	245	258	272	261	273	4.8%	4.6%
Elementary Education	376	361	322	300	261	5.9%	-13.0%
Family & Consumer Science	54	74	83	92	89	1.4%	-3.3%
Middle Level Education	*	*	*	19	40	0.2%	N/A
Physical Education	103	122	140	146	134	2.4%	-8.2%
Special Education	74	80	76	58	57	1.3%	-1.7%
Sport Management *	84	83	101	93	89	1.7%	-4.3%
<b>VISUAL &amp; PERFORMING ARTS</b>	<b>756</b>	<b>810</b>	<b>831</b>	<b>853</b>	<b>827</b>	<b>15.0%</b>	<b>-3.0%</b>
Art (B.A.)	123	109	106	111	104	2.0%	-6.3%
Art (B.F.A.)	322	347	355	358	346	6.3%	-3.4%
Art History (B.A.)	16	15	23	26	24	0.4%	-7.7%
Dance	58	77	77	72	76	1.3%	5.6%
Music (B.A.)	37	46	41	50	51	0.8%	2.0%
Music Education (Choral)	29	33	40	41	44	0.7%	7.3%
Music Education (Instrumental)	43	37	54	58	57	0.9%	-1.7%
Music (Performance)	32	36	40	32	32	0.6%	0.0%
Theatre	96	110	95	105	93	1.8%	-11.4%
<b>PRE-MAJOR</b>	<b>421</b>	<b>429</b>	<b>442</b>	<b>453</b>	<b>405</b>	<b>7.9%</b>	<b>-10.6%</b>
New Start Undecided	2	2	2	1	1	0.0%	0.0%
Pre-Business	13	9	13	9	6	0.2%	-33.3%
Pre-Education	9	9	4	4	3	0.1%	-25.0%
Pre-Major	165	161	149	142	118	2.7%	-16.9%
Pre-Nursing	15	26	34	17	6	0.4%	-64.7%
Distance Learning	191	200	217	255	255	4.1%	0.0%
Non-Degree Transient	12	15	15	13	13	0.2%	0.0%
Non-Degree Undergraduate	14	7	8	12	3	0.2%	-75.0%

Note: Counts include double majors and students working toward two degrees.

\* Interdisciplinary program

**UNDERGRADUATE HEADCOUNT ENROLLMENT  
SPRING 2003 - SPRING 2007**

COLLEGE / DEGREE PROGRAMS	2003	2004	2005	2006	2007	% OF 5 YEAR TOTAL	06 TO 07 % DIFF.
<b>ARTS &amp; SCIENCES</b>	<b>1,885</b>	<b>1,889</b>	<b>1,849</b>	<b>1,969</b>	<b>1,961</b>	<b>39.4%</b>	<b>-0.4%</b>
Biology	285	299	296	300	308	6.1%	2.7%
Chemistry	44	28	44	71	78	1.1%	9.9%
English	120	138	136	130	134	2.7%	3.1%
Environmental Science (B.S.)	12	14	7	9	9	0.2%	0.0%
Environmental Studies (B.A.)	8	13	12	15	15	0.3%	0.0%
General Communication Disorders	64	59	62	65	65	1.3%	0.0%
Gerontology (Cert.)	3	1	2	10	11	0.1%	10.0%
History	146	135	139	166	167	3.1%	0.6%
Human Nutrition	42	48	48	61	69	1.1%	13.1%
Integrated Marketing Communication #	107	69	41	38	36	1.2%	-5.3%
Mass Communication	115	83	79	82	82	1.8%	0.0%
Mathematics (B.A.)	26	30	29	38	39	0.7%	2.6%
Mathematics (B.S.)	36	23	22	16	20	0.5%	25.0%
Medical Technology	1	0	0	0	0	0.0%	0.0%
Modern Languages	41	39	44	65	54	1.0%	-16.9%
Philosophy & Religious Studies	33	31	24	38	35	0.7%	-7.9%
Political Science	187	163	155	159	138	3.3%	-13.2%
Pre-Engineering	8	14	10	4	4	0.2%	0.0%
Pre-Integrated Marketing	37	56	64	90	80	1.3%	-11.1%
Pre-Mass Communication	46	117	105	82	77	1.8%	-6.1%
Psychology	262	279	284	287	290	5.8%	1.0%
Science Communications	3	3	2	2	2	0.0%	0.0%
Social Work	124	116	111	94	95	2.2%	1.1%
Sociology	135	131	133	147	153	2.9%	4.1%
<b>BUSINESS ADMINISTRATION</b>	<b>1,172</b>	<b>1,071</b>	<b>1,038</b>	<b>1,037</b>	<b>1,079</b>	<b>22.2%</b>	<b>4.1%</b>
Business Administration	891	830	821	842	871	17.5%	3.4%
Computer Science	80	82	70	62	71	1.5%	14.5%
Economics	4	10	10	12	17	0.2%	41.7%
Integrated Marketing Communication #	107	69	41	38	36	1.2%	-5.3%
Sport Management #	90	80	96	83	84	1.8%	1.2%
<b>EDUCATION</b>	<b>898</b>	<b>922</b>	<b>921</b>	<b>898</b>	<b>886</b>	<b>18.6%</b>	<b>-1.3%</b>
Early Childhood Education	234	233	252	253	259	5.1%	2.4%
Elementary Education	345	333	285	249	235	6.0%	-5.6%
Family & Consumer Science (HEED)	57	73	97	104	80	1.7%	-23.1%
Middle Level Education				18	46	0.3%	155.6%
Physical Education	103	128	127	136	131	2.6%	-3.7%
Special Education	69	75	64	55	51	1.3%	-7.3%
Sport Management #	90	80	96	83	84	1.8%	1.2%
<b>VISUAL &amp; PERFORMING ARTS</b>	<b>726</b>	<b>746</b>	<b>764</b>	<b>777</b>	<b>782</b>	<b>15.6%</b>	<b>0.6%</b>
Art (B.A.)	112	100	102	105	93	2.1%	-11.4%
Art (B.F.A.)	307	320	322	334	327	6.6%	-2.1%
Art History (B.A.)	20	16	22	25	24	0.4%	-4.0%
Dance	57	67	65	66	69	1.3%	4.5%
Music (B.A.)	38	42	37	41	56	0.9%	36.6%
Music Education (Choral)	24	34	33	33	36	0.7%	9.1%
Music Education (Instrumental)	39	38	51	49	58	1.0%	18.4%
Music (Performance)	33	35	37	28	27	0.7%	-3.6%
Theatre	96	94	95	96	92	1.9%	-4.2%
<b>PRE-MAJOR</b>	<b>145</b>	<b>157</b>	<b>146</b>	<b>243</b>	<b>261</b>	<b>3.9%</b>	<b>7.4%</b>
New Start Undecided	3	2	1	1		0.0%	-100.0%
Pre-Business	9	8	13	5	9	0.2%	80.0%
Pre-Education	6	5	1	2	2	0.1%	0.0%
Pre-Major	109	123	107	72	87	2.1%	20.8%
Undeclared				152	159	1.3%	4.6%
Pre-Nursing	18	19	24	11	4	0.3%	-63.6%
Distance Learning	173	176	151			2.1%	0.0%
Non-Degree Transient	26	41	62	41	45	0.9%	9.8%
Non-Degree Undergraduate	14	8	15	7	9	0.2%	28.6%

Note: Counts include double majors and students working toward two degrees.

\* New program # Interdisciplinary program

**GRADUATE HEADCOUNT ENROLLMENT  
FALL 2002 - FALL 2006**

COLLEGE / DEGREE PROGRAMS	2002	2003	2004	2005	2006	% OF 5-YEAR TOTAL	04 TO 05 % DIFF.
<b>ARTS AND SCIENCES</b>	<b>120</b>	<b>129</b>	<b>124</b>	<b>131</b>	<b>148</b>	<b>12.8%</b>	<b>13.0%</b>
Biology	11	16	15	21	12	1.5%	-42.9%
English	8	12	14	16	15	1.3%	-6.3%
History	18	11	11	13	8	1.2%	-38.5%
Human Nutrition	33	35	27	27	25	2.9%	-7.4%
Human Nutrition - Certification	*	*	1	3		0.1%	-100.0%
Liberal Arts	18	21	20	19	20	1.9%	5.3%
Mathematics	1	3	6	2	***	0.2%	-100.0%
S.S.P./ M.S.School Psychology	25	24	26	27	30	2.6%	11.1%
MSW Social Work	*	*	*	*	32		
Spanish	6	7	4	3	6	0.5%	100.0%
<b>BUSINESS ADMINISTRATION</b>	<b>222</b>	<b>228</b>	<b>236</b>	<b>233</b>	<b>196</b>	<b>21.9%</b>	<b>-15.9%</b>
Business Administration	182	197	206	201	162	18.6%	-19.4%
Executive MBA	35	19	22	26	30	2.6%	15.4%
Software Development	5	12	8	6	4	0.7%	-33.3%
<b>EDUCATION</b>	<b>286</b>	<b>309</b>	<b>301</b>	<b>294</b>	<b>299</b>	<b>29.3%</b>	<b>1.7%</b>
Counseling & Dev (Guidance)	31	36	45	46	39	3.9%	-15.2%
Curriculum and Instruction (Med)	##	##	21	27	36	1.7%	33.3%
Educational Adm. & Sup. (MEd)	1	**	**	**	**	0.0%	0.0%
Educational Administration (EdS)						6.9%	0.0%
Educational Leadership	48	71	84	67	79	7.5%	17.9%
Elementary Education ##	15	13	3			0.6%	0.0%
Middle Level Education	25	18	16	32	30	9.2%	-6.3%
Physical Education	14	15	12	11	18	6.8%	63.6%
Reading	86	78	55	41	18	5.5%	-56.1%
Secondary Education (MAT)	****	****	****	****	****	4.3%	N/A
Biology	2	3	3	2	4	5.8%	100.0%
Business	4	6	10	11	5	6.0%	-54.5%
English	10	14	14	11	7	5.7%	-36.4%
Family Consumer Science	1	1	0	2	1	5.0%	-50.0%
French	1	1	0	2	1	4.9%	-50.0%
Mathematics	1	1	0	2	4	9.2%	100.0%
Social Studies	11	16	12	12	22	10.8%	83.3%
Spanish	*	*	1	1		10.2%	-100.0%
Secondary Education (MEd) ##	10	11	1			0.4%	0.0%
Special Education	9	15	14	15	21	1.5%	40.0%
Teacher Education Art K-12	3	6	5	5	5	9.3%	0.0%
Teacher Education Dance K-12	1	0	0	0	0	9.7%	0.0%
Teacher Education Music K-12	6	3	4	3	4	9.7%	33.3%
Teacher Education Physical Ed. K-12	7	1	1	4	5	0.4%	25.0%
<b>VISUAL &amp; PERFORMING ARTS</b>	<b>25</b>	<b>31</b>	<b>56</b>	<b>56</b>	<b>59</b>	<b>4.5%</b>	<b>5.4%</b>
Art Administration	*	*	17	22	24	1.2%	9.1%
Art Education	1	4	7	5	9	0.5%	80.0%
Conducting	7	7	11	11	6	0.8%	-45.5%
Fine Arts	6	10	11	9	5	0.8%	-44.4%
Music Education	5	1	2	3	2	0.3%	-33.3%
Music Performance	6	9	8	6	13	0.8%	116.7%
<b>UNDESIGNATED/UNASSIGNED</b>	<b>283</b>	<b>336</b>	<b>212</b>	<b>282</b>	<b>488</b>	<b>31.5%</b>	<b>73.0%</b>
ACRT	2	3	3	2	0	0.2%	-100.0%
GNDG	253	300	202	273	456	29.2%	67.0%
ICRT	6	3	2	5	5	0.4%	0.0%
OBRG	*	*	*	*	15		
RCRT	2	1	1	1	1	0.1%	0.0%
TRNS	3	7	4	1	11	0.5%	1000.0%
Degree Programs (GS Class)	17	22	0		0	0.8%	0.0%
<b>TOTAL</b>	<b>936</b>	<b>1,033</b>	<b>929</b>	<b>996</b>	<b>1,190</b>	<b>100.0%</b>	<b>19.5%</b>

\* New program

\*\* MEd EDAS changed to MEd EDLD in Fall 1999

\*\*\* Program discontinued

\*\*\*\* Concentrations broken out into separate program options

## ELEM (MEd) & SCED (MEd) changed to options under Curriculum and Instruction (MEd)

5084 = 5-YEAR TOTAL

## NEW START

### HEADCOUNT ENROLLMENT AND CREDIT HOUR PRODUCTION

CATEGORY	2004			2005			2006		
	Spring	Summer	Fall	Spring	Summer	Fall	Spring	Summer	Fall
Headcount	498	199	513	488	162	480	438	177	431
CHP	5,193	1,224	5,379	4,972	1,019	5,138	4,656	955	4,566

### HEADCOUNT ENROLLMENT BY STATUS AND CLASS

STATUS	2004			2005			2006		
	Spring	Summer	Fall	Spring	Summer	Fall	Spring	Summer	Fall
New Freshmen	0	0	1	3	0	2	2	0	4
New Transfer	36	10	72	31	9	59	33	13	49
Readmit	56	14	46	35	16	43	32	25	20
Continuing	391	169	365	401	133	353	361	133	334
Other	15	6	29	18	4	23	10	6	24
<b>TOTAL</b>	<b>498</b>	<b>199</b>	<b>513</b>	<b>488</b>	<b>162</b>	<b>480</b>	<b>438</b>	<b>177</b>	<b>431</b>

CLASS	2004			2005			2006		
	Spring	Summer	Fall	Spring	Summer	Fall	Spring	Summer	Fall
Freshman	25	6	34	28	1	28	26	6	33
Sophomore	77	17	77	68	15	73	61	12	54
Junior	127	38	136	125	29	117	115	31	94
Senior	258	131	246	241	112	243	225	123	235
Undergrad Special	11	7	20	26	5	19	11	5	15
Grad Degree Seeking	0	0	0	0	0	0	0	0	0
Grad Conditional	0	0	0	0	0	0	0	0	0
Grad Special	0	0	0	0	0	0	0	0	0
<b>TOTAL</b>	<b>498</b>	<b>199</b>	<b>513</b>	<b>488</b>	<b>162</b>	<b>480</b>	<b>438</b>	<b>177</b>	<b>431</b>

### HEADCOUNT ENROLLMENT BY ETHNIC CATEGORY AND GENDER

ETHNIC CATEGORY	2004			2005			2006		
	Spring	Summer	Fall	Spring	Summer	Fall	Spring	Summer	Fall
Black, non-Hispanic	125	45	138	131	43	135	131	48	117
White, non-Hispanic	351	148	355	343	112	334	293	122	301
American Indian/Alaskan	6	3	5	2	1	2	3	3	3
Asian/Pacific Islander	8	0	6	4	3	3	5	2	4
International	0	1	1	0	0	0	0	0	0
Hispanic	8	2	8	8	3	6	6	2	6
Unknown	0	0	0	0	0	0	0	0	0
<b>Total</b>	<b>498</b>	<b>199</b>	<b>513</b>	<b>488</b>	<b>162</b>	<b>480</b>	<b>438</b>	<b>177</b>	<b>431</b>

GENDER	2004			2005			2006		
	Spring	Summer	Fall	Spring	Summer	Fall	Spring	Summer	Fall
Male	151	62	167	157	54	154	144	62	156
Female	347	137	346	331	108	326	294	115	275
<b>Total</b>	<b>498</b>	<b>199</b>	<b>513</b>	<b>488</b>	<b>162</b>	<b>480</b>	<b>438</b>	<b>177</b>	<b>431</b>

NOTE: The New Start program is a service/information program for adults age 25 and older who are beginning or continuing their education at the undergraduate level.

**Ratio of FTE Students to FTE Teaching Faculty  
FALL 2002 - FALL 2006**

(Performance Funding Indicator 3A)

	FALL 2002	FALL 2003	FALL 2004	FALL 2005	FALL 2006
<b>Credit Hour Production</b>	<b>78,349</b>	<b>81,122</b>	<b>80,292</b>	<b>80,340</b>	<b>79,630</b>
Undergraduate	71,440	73,701	73,924	73,547	73,391
Graduate	6,909	7,421	6,368	6,793	6,239
<b>FTE Students*</b>	<b>5,338</b>	<b>5,532</b>	<b>5,459</b>	<b>5,469</b>	<b>5,413</b>
Undergraduate	4,763	4,913	4,928	4,903	4,893
Graduate	576	618	531	566	520
<b>FTE Teaching Faculty**</b>	<b>340</b>	<b>368</b>	<b>369</b>	<b>386</b>	<b>362</b>
<b>FTE Students/FTE Faculty</b>	<b>15.7</b>	<b>15.0</b>	<b>14.8</b>	<b>14.2</b>	<b>15.0</b>

\* FTE Students = CHP divided by 15 for undergraduates & 12 for graduates.

\*\* FTE Teaching Faculty=Headcount FT Instructional Faculty(who teach at least 3 hrs Fall) and FTE of Part-time faculty.

# CREDIT HOUR PRODUCTION BY DEPARTMENT

## FALL 2003-2006

DEPARTMENT	FALL 2003		FALL 2004		FALL 2005		FALL 2006		05 TO 06 % DIFF.	
	UG	G	UG	G	UG	G	UG	G	UG	G
<b>Arts and Sciences</b>	<b>41,935</b>	<b>1,371</b>	<b>41,466</b>	<b>1,187</b>	<b>40,339</b>	<b>1,205</b>	<b>40,051</b>	<b>1,551</b>	<b>-0.7%</b>	<b>28.7%</b>
<b>Biology</b>	<b>4,397</b>	<b>142</b>	<b>4,362</b>	<b>153</b>	<b>4,222</b>	<b>177</b>	<b>4,073</b>	<b>124</b>	<b>-3.5%</b>	<b>-29.9%</b>
BIOL	4,375	134	4,175	149	4,218	177	3,886	116	-7.9%	-34.5%
SCIE	22	8	187	4	4	0	187	8	4575.0%	100.0%
<b>Chemistry</b>	<b>3,043</b>	<b>5</b>	<b>2,782</b>	<b>0</b>	<b>2,691</b>	<b>0</b>	<b>2,802</b>	<b>0</b>	<b>4.1%</b>	<b>0.0%</b>
CHEM	1,408	5	1,380	0	1,151	0	1,429	0	24.2%	0.0%
ENVS	94	0	63	0	60	0	0	0	-100.0%	0.0%
GEOL	930	0	727	0	802	0	597	0	-25.6%	0.0%
PHSC	0	0	0	0	0	0	0	0	0.0%	0.0%
PHYS	611	0	612	0	678	0	776	0	14.5%	0.0%
<b>English</b>	<b>7,369</b>	<b>229</b>	<b>7,168</b>	<b>182</b>	<b>6,914</b>	<b>160</b>	<b>5,934</b>	<b>165</b>	<b>-14.2%</b>	<b>3.1%</b>
CRTW	N/A	N/A	45	0	1,314	0	1,218	0	-7.3%	0.0%
ENGL	1,980	178	2,196	129	1,608	120	1,167	123	-27.4%	2.5%
ENGE	36	36	71	20	43	16	47	12	9.3%	-25.0%
SPCH	712	0	828	0	691	0	0	0	-100.0%	0.0%
WRIT	4,641	15	4,028	33	3,258	24	3,502	30	7.5%	25.0%
<b>History</b>	<b>4,061</b>	<b>136</b>	<b>4,235</b>	<b>132</b>	<b>3,679</b>	<b>107</b>	<b>3,444</b>	<b>152</b>	<b>-6.4%</b>	<b>42.1%</b>
HIST	4,017	120	4,207	108	3,643	99	3,414	108	-6.3%	9.1%
SCST	44	16	28	24	36	8	30	44	-16.7%	450.0%
<b>Human Nutrition</b>	<b>1,216</b>	<b>116</b>	<b>1,252</b>	<b>136</b>	<b>1,509</b>	<b>105</b>	<b>1,454</b>	<b>132</b>	<b>-3.6%</b>	<b>25.7%</b>
NUTR	790	110	1,021	133	1,188	105	1,148	120	-3.4%	14.3%
GEOG	426	6	231	3	321		306	12	-4.7%	100.0%
<b>Mass Communication</b>	<b>1,379</b>	<b>0</b>	<b>1,379</b>	<b>0</b>	<b>1,390</b>	<b>0</b>	<b>1,429</b>	<b>0</b>	<b>2.8%</b>	<b>0.0%</b>
MCOM	1,260	0	1,280	0	1,318	0	1,312	0	-0.5%	0.0%
IMCO	119	0	99	0	72	0	117	0	62.5%	0.0%
<b>Mathematics</b>	<b>5,182</b>	<b>69</b>	<b>4,672</b>	<b>39</b>	<b>4,682</b>	<b>46</b>	<b>4,867</b>	<b>34</b>	<b>4.0%</b>	<b>-26.1%</b>
MAED	21	0	84	0	76	4	86	4	13.2%	0.0%
MATH	5,161	69	2,440	39	2,233	42	2,288	30	2.5%	-28.6%
CTQR	N/A	N/A	2,148	0	2,373	0	2,493	0	5.1%	0.0%
<b>Modern &amp; Classical Lang.</b>	<b>4,067</b>	<b>49</b>	<b>4,317</b>	<b>25</b>	<b>3,947</b>	<b>49</b>	<b>3,834</b>	<b>37</b>	<b>-2.9%</b>	<b>-24.5%</b>
CHIN	36	0	24	0	0	0	56	0	100.0%	0.0%
FREN	841	0	828	0	727	3	608	3	-16.4%	0.0%
GERM	237	0	214	0	183	0	251	0	37.2%	0.0%
ITAL	192	0	188	0	176	0	136	0	-22.7%	0.0%
JAPN	72	0	84	0	80	8	72	0	-10.0%	-100.0%
LATN	84	0	92	0	32	0	64	0	100.0%	0.0%
MLAN	12	9	8	4	8	8	4	4	-50.0%	-50.0%
SPAN	2,593	40	2,879	21	2,741	30	2,643	30	-3.6%	0.0%
<b>Philosophy &amp; Religion</b>	<b>934</b>	<b>0</b>	<b>996</b>	<b>0</b>	<b>1,350</b>	<b>0</b>	<b>1,371</b>	<b>0</b>	<b>1.6%</b>	<b>0.0%</b>
PHIL	504	0	576	0	600	0	570	0	-5.0%	0.0%
RELG	430	0	420	0	750	0	801	0	6.8%	0.0%
<b>Political Science</b>	<b>2,674</b>	<b>0</b>	<b>2,782</b>	<b>3</b>	<b>2,484</b>	<b>21</b>	<b>2,250</b>	<b>12</b>	<b>-9.4%</b>	<b>-42.9%</b>
AAMS	87	0	90	0	93	0	108	0	16.1%	0.0%
PLSC	2,587	0	2,692	3	2,391	21	2,142	12	-10.4%	-42.9%
<b>Psychology</b>	<b>2,913</b>	<b>526</b>	<b>2,884</b>	<b>463</b>	<b>2,932</b>	<b>459</b>	<b>3,151</b>	<b>463</b>	<b>7.5%</b>	<b>0.9%</b>
PSYC	2,913	526	2,884	463	2,932	459	3,151	463	7.5%	0.9%
<b>Sociology</b>	<b>3,602</b>	<b>18</b>	<b>3,744</b>	<b>6</b>	<b>3,807</b>	<b>3</b>	<b>3,959</b>	<b>21</b>	<b>4.0%</b>	<b>600.0%</b>
ANTH	1,152	6	1,308	3	1,206		1,248		3.5%	0.0%
GRNT	93	0	99	0	153	0	117	0	-23.5%	0.0%
SOCL	2,264	12	2,256	3	2,352	3	2,489	21	5.8%	600.0%
WMST	93	0	81	0	96	0	105	0	9.4%	0.0%
<b>Social Work</b>	<b>1,080</b>	<b>12</b>	<b>893</b>	<b>3</b>	<b>732</b>	<b>12</b>	<b>664</b>	<b>354</b>	<b>-9.3%</b>	<b>2850.0%</b>
SCWK	1,080	12	893	3	732	12	664	354	-9.3%	2850.0%
<b>Speech</b>	<b>712</b>	<b>0</b>	<b>828</b>	<b>0</b>	<b>691</b>	<b>0</b>	<b>807</b>	<b>0</b>	<b>16.8%</b>	<b>0.0%</b>
SPCH	712	0	828	0	691	0	807	0	16.8%	0.0%
<b>Other</b>	<b>18</b>	<b>69</b>	<b>0</b>	<b>45</b>	<b>0</b>	<b>66</b>	<b>12</b>	<b>57</b>	<b>100.0%</b>	<b>-13.6%</b>
INAS	18	0	0	0	0	0	12	0	100.0%	0.0%
LART	0	69	0	45	0	66	0	57	0.0%	-13.6%



# CREDIT HOUR PRODUCTION BY DEPARTMENT

## FALL 2003-2006

DEPARTMENT	FALL 2003		FALL 2004		FALL 2005		FALL 2006		05 TO 06 % DIFF.	
	UG	G	UG	G	UG	G	UG	G	UG	G
<b>Business Admin.</b>	<b>11,750</b>	<b>1,800</b>	<b>11,649</b>	<b>1,782</b>	<b>11,080</b>	<b>1,575</b>	<b>11,744</b>	<b>1,380</b>	<b>6.0%</b>	<b>-12.4%</b>
<b>Acct, Finance, &amp; Econ.</b>	<b>4,224</b>	<b>495</b>	<b>3,828</b>	<b>498</b>	<b>3,864</b>	<b>426</b>	<b>4,059</b>	<b>465</b>	<b>5.0%</b>	<b>9.2%</b>
ACCT	1,458	252	1,485	195	1,434	162	1,314	159	-8.4%	-1.9%
ECON	2,016	90	1,575	123	1,620	87	1,923	66	18.7%	-24.1%
FINC	750	153	768	180	810	177	822	240	1.5%	35.6%
<b>Com. Sci. &amp; Quan. Meth.</b>	<b>2,741</b>	<b>138</b>	<b>2,672</b>	<b>114</b>	<b>2,605</b>	<b>111</b>	<b>2,470</b>	<b>81</b>	<b>-5.2%</b>	<b>-27.0%</b>
CSCI	1,841	9	1,772	30	1,735	39	1,603	30	-7.6%	-23.1%
QMTM	900	129	900	84	870	72	867	51	-0.3%	-29.2%
<b>Management &amp; Mktg.</b>	<b>4,785</b>	<b>1,167</b>	<b>5,149</b>	<b>1,170</b>	<b>4,611</b>	<b>1,038</b>	<b>5,215</b>	<b>834</b>	<b>13.1%</b>	<b>-19.7%</b>
BADM	1,032	315	1,281	450	1,224	366	1,326	336	8.3%	-8.2%
HLAD/HLSM	249	0	189	0	0	0	0	0	0.0%	0.0%
IMCO	119	0	99	0	99	0	117	0	18.2%	0.0%
MGMT	2,004	714	2,133	600	2,310	579	2,286	423	-1.0%	-26.9%
MKTG	1,233	138	1,047	120	978	93	1,152	75	17.8%	-19.4%
SPMA	148	0	400	0	0	0	334	0	100.0%	0.0%
<b>Education</b>	<b>8,646</b>	<b>3,784</b>	<b>8,998</b>	<b>2,981</b>	<b>8,991</b>	<b>3,291</b>	<b>8,499</b>	<b>2,896</b>	<b>-5.5%</b>	<b>-12.0%</b>
<b>Center for Pedagogy</b>	<b>3,686</b>	<b>1,251</b>	<b>3,792</b>	<b>1,095</b>	<b>3,792</b>	<b>978</b>	<b>3,560</b>	<b>978</b>	<b>-6.1%</b>	<b>0.0%</b>
EDUC	3,686	735	3,792	564	3,792	564	3,560	516	-6.1%	-8.5%
EDLD	0	516	0	531	0	414	0	462	0.0%	11.6%
<b>Curriculum &amp; Inst.</b>	<b>2,470</b>	<b>742</b>	<b>2,421</b>	<b>742</b>	<b>2,227</b>	<b>708</b>	<b>2,238</b>	<b>715</b>	<b>0.5%</b>	<b>1.0%</b>
CSDV	0	444	0	342	0	312	0	327	0.0%	4.8%
ECED	648	33	552	0	521	0	689	0	32.2%	0.0%
EDCI	177	84	180	171	300	198	229	201	-23.7%	1.5%
ELEM	628	0	640	0	583	0	541	0	-7.2%	0.0%
READ	546	63	507	75	484	54	527	42	8.9%	-22.2%
SCED	0	12	0	12	60	21	54	12	-10.0%	-42.9%
SPED	217	78	263	123	267	117	198	132	-25.8%	12.8%
VCED	254	28	279	19	12	6	0	1	-100.0%	-83.3%
<b>Physical Education</b>	<b>2,484</b>	<b>129</b>	<b>2,782</b>	<b>130</b>	<b>2,924</b>	<b>138</b>	<b>2,665</b>	<b>174</b>	<b>-8.9%</b>	<b>26.1%</b>
HLTH	657	12	609	18	634	24	644	63	1.6%	162.5%
PHED	1,679	117	1,773	112	1,967	114	1,687	111	-14.2%	-2.6%
SPMA	148	0	400	0	323	0	334	0	3.4%	0.0%
<b>Professional Development</b>	<b>6</b>	<b>1,662</b>	<b>3</b>	<b>1,014</b>	<b>48</b>	<b>1,467</b>	<b>36</b>	<b>1,029</b>	<b>-25.0%</b>	<b>-29.9%</b>
WPDC	6	1,662	3	1,014	48	1,467	36	1,029	-25.0%	-29.9%
<b>Visual &amp; Perf. Arts</b>	<b>10,037</b>	<b>464</b>	<b>10,631</b>	<b>418</b>	<b>10,468</b>	<b>370</b>	<b>9,562</b>	<b>256</b>	<b>-8.7%</b>	<b>-30.8%</b>
<b>Art &amp; Design</b>	<b>5,605</b>	<b>126</b>	<b>6,011</b>	<b>105</b>	<b>5,839</b>	<b>96</b>	<b>5,162</b>	<b>88</b>	<b>-11.6%</b>	<b>-8.3%</b>
ARTE	151	36	182	22	153	33	151	37	-1.3%	12.1%
ARTH	1,374	15	1,524	12	1,401	6	1,317	18	-6.0%	200.0%
ARTS	2,971	75	2,634	71	2,610	57	2,368	33	-9.3%	-42.1%
ARTT	493	0	558	0	461	0	396	0	-14.1%	0.0%
INDS	616	0	578	0	679	0	930	0	37.0%	0.0%
VCOM	N/A	N/A	535	0	535	0	0	0	-100.0%	0.0%
<b>CVPA</b>	<b>0</b>	<b>201</b>	<b>0</b>	<b>154</b>	<b>0</b>	<b>154</b>	<b>0</b>	<b>0</b>	<b>0.0%</b>	<b>-100.0%</b>
ARTA	0	198	0	154	0	154	0	0	0.0%	-100.0%
VPAS	0	3	0	0	0	0	0	0	0.0%	0.0%
<b>Dance/Theatre</b>	<b>2,228</b>	<b>3</b>	<b>2,147</b>	<b>0</b>	<b>2,011</b>	<b>0</b>	<b>1,952</b>	<b>0</b>	<b>-2.9%</b>	<b>0.0%</b>
DANA	420	0	384	0	326	0	405	0	24.2%	0.0%
DANT	416	0	449	0	401	0	376	0	-6.2%	0.0%
THED	N/A	N/A	47	0	0	0	0	0	0.0%	0.0%
THRA	717	0	646	0	789	0	725	0	-8.1%	0.0%
THRT	675	3	621	0	495	0	446	0	-9.9%	0.0%
<b>Music</b>	<b>2,204</b>	<b>134</b>	<b>2,473</b>	<b>159</b>	<b>2,618</b>	<b>120</b>	<b>2,448</b>	<b>168</b>	<b>-6.5%</b>	<b>40.0%</b>
MUSA	701	65	895	75	919	39	946	74	2.9%	89.7%
MUST	1,503	69	1,578	84	1,699	81	1,502	94	-11.6%	16.0%
<b>University College</b>	<b>1,464</b>	<b>0</b>	<b>1,679</b>	<b>0</b>	<b>2,060</b>	<b>0</b>	<b>2,693</b>	<b>0</b>	<b>30.7%</b>	<b>0.0%</b>
ACAD	1,077	0	1,009	0	1,023	0	1,180	0	15.3%	0.0%
CISM	0	0	0	0	0	0	0	0	0.0%	0.0%
GNED	378	0	654	0	1,002	0	1,473	0	47.0%	0.0%
HONR	9	0	16	0	35	0	40	0	14.3%	0.0%

NOTE: Credit Hours are by Course Level

**CREDIT HOUR PRODUCTION BY DEPARTMENT**  
**SPRING 2003 - SPRING 2007**

UNIT/DEPARTMENT	SPRING 2003		SPRING 2004		SPRING 2005		SPRING 2006		SPRING 2007		06 TO 07 % DIFF.	
	UG	G	UG	G	UG	G	UG	G	UG	G	UG	G
<b>Arts and Sciences</b>	<b>37,507</b>	<b>1,185</b>	<b>38,895</b>	<b>1,108</b>	<b>34,498</b>	<b>1,059</b>	<b>34,822</b>	<b>1,089</b>	<b>38,017</b>	<b>1,402</b>	<b>9.2%</b>	<b>28.7%</b>
<b>Biology</b>	<b>3,930</b>	<b>122</b>	<b>4,269</b>	<b>111</b>	<b>4,086</b>	<b>164</b>	<b>4,080</b>	<b>153</b>	<b>3,889</b>	<b>132</b>	<b>-4.7%</b>	<b>-13.7%</b>
BIOL	3,930	122	4,269	111	4,086	164	4,080	153	3,889	132	-4.7%	-13.7%
SCIE											0.0%	0.0%
<b>Chemistry</b>	<b>2,688</b>	<b>3</b>	<b>2,666</b>	<b>27</b>	<b>2,354</b>	<b>16</b>	<b>2,600</b>	<b>6</b>	<b>2,318</b>	<b>15</b>	<b>-10.8%</b>	<b>150.0%</b>
CHEM	1,257	3	1,331	27	1,011	13	1,164	6	1,069	15	-8.2%	150.0%
GEOL	801		676		614	3	686		490		-28.6%	0.0%
PHYS	630		659		729		750		759		1.2%	0.0%
<b>English</b>	<b>5,670</b>	<b>205</b>	<b>5,931</b>	<b>177</b>	<b>3,628</b>	<b>210</b>	<b>3,743</b>	<b>141</b>	<b>3,863</b>	<b>132</b>	<b>3.2%</b>	<b>-6.4%</b>
CRTW				27			1,095		1,371		25.2%	0.0%
ENGL	1,791	127	2,202	114	2,172	135	1,441	99	1,416	93	-1.7%	-6.1%
ENGE	36	33	51	12	42	9	39	12	42	15	7.7%	25.0%
WRIT	3,843	45	3,651	51	1,414	66	1,168	30	1,034	24	-11.5%	-20.0%
<b>History</b>	<b>4,083</b>	<b>96</b>	<b>3,657</b>	<b>117</b>	<b>2,977</b>	<b>99</b>	<b>2,502</b>	<b>99</b>	<b>2,706</b>	<b>150</b>	<b>8.2%</b>	<b>51.5%</b>
HIST	4,083	96	3,657	117	2,977	99	2,502	99	2,706	150	8.2%	51.5%
<b>Human Nutrition</b>	<b>1,385</b>	<b>164</b>	<b>1,139</b>	<b>129</b>	<b>1,304</b>	<b>120</b>	<b>1,478</b>	<b>185</b>	<b>1,811</b>	<b>149</b>	<b>22.5%</b>	<b>-19.5%</b>
NUTR	746	164	881	129	1,064	120	1,076	185	1,295	149	20.4%	-19.5%
GEOG	639		258		240		402		516		28.4%	0.0%
<b>Mass Communication</b>	<b>1,211</b>	<b>0</b>	<b>1,609</b>	<b>3</b>	<b>1,411</b>	<b>6</b>	<b>1,328</b>	<b>0</b>	<b>1,357</b>	<b>0</b>	<b>2.2%</b>	<b>0.0%</b>
MCOM	1,211		1,528	3	1,372	6	1,274		1,318		3.5%	0.0%
IMCO*			81		39		54		39		-27.8%	0.0%
<b>Mathematics</b>	<b>3,702</b>	<b>48</b>	<b>3,825</b>	<b>42</b>	<b>2,498</b>	<b>33</b>	<b>3,408</b>	<b>3</b>	<b>3,572</b>	<b>9</b>	<b>4.8%</b>	<b>200.0%</b>
CTQR							1,011		1,116		10.4%	0.0%
MAED/MPDC	15	6	30	3	62	3	60	3	74	6	23.3%	100.0%
MATH	3,687	42	3,795	39	2,436	30	2,337		2,382	3	1.9%	100.0%
<b>Modern &amp; Classical Lang.</b>	<b>3,664</b>	<b>39</b>	<b>3,872</b>	<b>30</b>	<b>3,898</b>	<b>18</b>	<b>3,880</b>	<b>48</b>	<b>3,570</b>	<b>30</b>	<b>-8.0%</b>	<b>-37.5%</b>
CHIN	24		32		8		64		44		-31.3%	0.0%
FREN	666		710		688	3	677	6	585		-13.6%	-100.0%
GERM	182		211		186		165		233		41.2%	0.0%
ITAL	80		176		168		84		64		-23.8%	0.0%
JAPN	72		52		40		72		60		-16.7%	0.0%
LATN	60		32		36		40		32		-20.0%	0.0%
MLAN				6	3						0.0%	0.0%
SPAN	2,580	39	2,659	24	2,769	15	2,778	42	2,552	30	-8.1%	-28.6%
<b>Philosophy &amp; Religion</b>	<b>1,055</b>	<b>0</b>	<b>1,056</b>	<b>0</b>	<b>1,023</b>	<b>0</b>	<b>1,326</b>	<b>9</b>	<b>1,353</b>	<b>6</b>	<b>2.0%</b>	<b>-33.3%</b>
PHIL	614	3	687		669	3	627	6	729		16.3%	-100.0%
RELG	441	3	369		354		699	3	624	6	-10.7%	100.0%
<b>Political Science</b>	<b>2,405</b>	<b>12</b>	<b>2,452</b>	<b>15</b>	<b>2,601</b>	<b>15</b>	<b>2,138</b>	<b>9</b>	<b>1,962</b>	<b>18</b>	<b>-8.2%</b>	<b>100.0%</b>
PLSC	2,405	12	2,452	15	2,601	15	2,138	9	1,962	18	-8.2%	100.0%
<b>Psychology</b>	<b>2,477</b>	<b>382</b>	<b>2,979</b>	<b>373</b>	<b>3,007</b>	<b>339</b>	<b>2,729</b>	<b>358</b>	<b>2,819</b>	<b>326</b>	<b>3.3%</b>	<b>-8.9%</b>
PSYC	2,477	382	2,979	373	3,007	339	2,729	358	2,819	326	3.3%	-8.9%
<b>Sociology</b>	<b>3,320</b>	<b>45</b>	<b>3,479</b>	<b>12</b>	<b>3,727</b>	<b>0</b>	<b>3,716</b>	<b>6</b>	<b>3,903</b>	<b>6</b>	<b>5.0%</b>	<b>0.0%</b>
ANTH	1,012	3	1,216	3	1,298		1,358		1,339		-1.4%	0.0%
GRNT	66		18		36		156		159		1.9%	0.0%
SOCL	2,242	42	2,245	9	2,393		2,172	3	2,402	6	10.6%	100.0%
WMST							30	3	3		-90.0%	-100.0%
<b>Social Work</b>	<b>1,155</b>	<b>12</b>	<b>1,131</b>	<b>12</b>	<b>1,015</b>	<b>6</b>	<b>884</b>	<b>6</b>	<b>805</b>	<b>384</b>	<b>-8.9%</b>	<b>6300.0%</b>
CMVS	45		45		54		45		45		0.0%	0.0%
SCWK	1,110	12	1,086	12	961	6	839	6	760	384	-9.4%	6300.0%
<b>Speech</b>	<b>672</b>	<b>0</b>	<b>726</b>	<b>0</b>	<b>771</b>	<b>0</b>	<b>758</b>	<b>0</b>	<b>765</b>	<b>0</b>	<b>0.9%</b>	<b>0.0%</b>
SPCH	672		726		771		758		765		0.9%	0.0%
<b>Other</b>	<b>90</b>	<b>57</b>	<b>104</b>	<b>60</b>	<b>198</b>	<b>33</b>	<b>252</b>	<b>66</b>	<b>228</b>	<b>45</b>	<b>-9.5%</b>	<b>-31.8%</b>
AAMS	3		3		90		117		105		-10.3%	0.0%
ENVS	60		89		87		114		99		-13.2%	0.0%
INAS	27		12		21		21		24		14.3%	0.0%
LART		57		60		33		66		45	0.0%	-31.8%
<b>University College</b>	<b>0</b>	<b>0</b>	<b>543</b>	<b>0</b>	<b>0</b>	<b>0</b>	<b>2,579</b>	<b>0</b>	<b>3,096</b>	<b>0</b>	<b>20.0%</b>	<b>0.0%</b>
ACAD			33				22		25		13.6%	0.0%
GNED			543				2508		3030		20.8%	0.0%
HONR	52		37		62		49		41		-16.3%	0.0%

\*Interdisciplinary Courses

NOTE: Credit Hours are by course level.

**CREDIT HOUR PRODUCTION BY DEPARTMENT BY COURSE LEVEL  
SUMMER 2003 - SUMMER 2006**

DEPARTMENT	SUM 2003		SUM 2004		SUM 2005		SUM 2006		05 TO 06 % DIFF.	
	UG	G	UG	G	UG	G	UG	G	UG	G
<b>Arts and Sciences</b>										
<b>Biology</b>	749	0	511	14	534	0	450	16	-15.7%	100.0%
BIOL	528		403	14	388		348	16	-10.3%	100.0%
SCIE	221		108		146		102		-30.1%	0.0%
<b>Chemistry</b>	565	0	720	0	416	0	428	45	2.9%	100.0%
CHEM	326		446		284		328		15.5%	0.0%
GEOL	80		52		45		45		0.0%	0.0%
PHYS	159		222		87		55	45	-36.8%	100.0%
<b>English</b>	498	174	600	171	405	156	436	153	7.7%	-1.9%
CRTW							51		100.0%	N/A
ENGL	213	36	276	24	204	36	225	48	10.3%	33.3%
WRIT	285	138	324	147	201	120	160	105	-20.4%	-12.5%
<b>History</b>	304	48	285	51	291	39	306	39	5.2%	0.0%
HIST	304	48	285	51	291	39	306	39	5.2%	0.0%
<b>Human Nutrition</b>	398	100	225	62	309	57	289	68	-6.5%	19.3%
NUTR	206	100	171	62	243	57	238	68	-2.1%	19.3%
GEOG	192		54		66		51		-22.7%	0.0%
<b>Mass Communication</b>	150	0	97	51	74	39	49	48	-33.8%	23.1%
MCOM	150		97	51	74	39	49	48	-33.8%	23.1%
<b>Mathematics</b>	666	48	651	75	423	21	453	18	7.1%	-14.3%
CTQR							132		100.0%	N/A
MAED/MPDC		45		57				18	0.0%	100.0%
MATH	666	3	651	18	423	21	321		-24.1%	-100.0%
<b>Modern &amp; Classical Lang.</b>	344	96	518	30	331	12	419	42	26.6%	250.0%
FREN	60		32		48		48		0.0%	0.0%
MLAN	30	12	120	6	54	12	102	12	88.9%	0.0%
SPAN	254	84	366	24	229		269	30	17.5%	100.0%
<b>Philosophy &amp; Religion</b>	198	0	138	0	141	0	78	0	-44.7%	0.0%
PHIL	138		108		42		33		-21.4%	0.0%
RELG	60		30		99		45		-54.5%	0.0%
<b>Political Science</b>	257	6	210	3	141	0	108	6	-23.4%	100.0%
PLSC	257	6	210	3	141		108	6	-23.4%	100.0%
<b>Psychology</b>	132	261	198	411	214	408	207	333	-3.3%	-18.4%
PSYC	132	261	198	411	214	408	207	333	-3.3%	-18.4%
<b>Sociology</b>	350	30	370	3	117	3	300	3	156.4%	0.0%
ANTH					90		57		-36.7%	N/A
GRNT	21		36		27		21		-22.2%	N/A
SOCL	329	30	334	3		3	222	3	100.0%	0.0%
<b>Social Work</b>	197	0	206	3	142	6	24	6	-83.1%	0.0%
CMVS							15		100.0%	N/A
SCWK	197		206	3	142	6	9	6	-93.7%	0.0%
<b>Speech</b>	180	0	192	0	139	0	156	0	12.2%	0.0%
SPCH	180		192		139		156		12.2%	0.0%
<b>Other</b>	0	0	9	0	0	0	0	0	0.0%	N/A
AAMS			9						0.0%	N/A
<b>University College</b>	0	0	12	0	0	0	66	0	100.0%	N/A
GNED			12				66		-100.0%	N/A

**CREDIT HOUR PRODUCTION BY DEPARTMENT BY COURSE LEVEL  
SUMMER 2003 - SUMMER 2006**

DEPARTMENT	SUM 2003		SUM 2004		SUM 2005		SUM 2006		05 TO 06 % DIFF.	
	UG	G	UG	G	UG	G	UG	G	UG	G
<b>Business Administration</b>										
<b>Account, Finance, &amp; Econ.</b>	<b>510</b>	<b>423</b>	<b>348</b>	<b>336</b>	<b>423</b>	<b>234</b>	<b>288</b>	<b>228</b>	<b>-31.9%</b>	<b>-2.6%</b>
ACCT	189	156	129	123	168	132	90	102	-46.4%	-22.7%
ECON	201	150	129	126	132	60	75	69	-43.2%	15.0%
FINC	120	117	90	87	123	42	123	57	0.0%	35.7%
<b>Com. Sci. &amp; Quan.Meth.</b>	<b>213</b>	<b>114</b>	<b>156</b>	<b>87</b>	<b>129</b>	<b>99</b>	<b>106</b>	<b>51</b>	<b>-17.8%</b>	<b>-48.5%</b>
CSCI	48	21	54	9	27		19	12	-29.6%	100.0%
QMTH	165	93	102	78	102	99	87	39	-14.7%	-60.6%
<b>Management &amp; Marketing</b>	<b>547</b>	<b>480</b>	<b>616</b>	<b>474</b>	<b>453</b>	<b>390</b>	<b>589</b>	<b>291</b>	<b>30.0%</b>	<b>-25.4%</b>
BADM	39	51	63	111	57	147	103	111	80.7%	-24.5%
ENTR							6		100.0%	N/A
HCMT							27		100.0%	N/A
HLAD/HLSM	33		42		42				-100.0%	0.0%
MGMT	345	429	312	363	264	243	240	180	-9.1%	-25.9%
MKTG	72		123		90		135		50.0%	0.0%
SPMA	58		76				78		100.0%	0.0%
<b>Education</b>										
<b>Center for Pedagogy</b>	<b>178</b>	<b>705</b>	<b>94</b>	<b>594</b>	<b>78</b>	<b>633</b>	<b>60</b>	<b>666</b>	<b>-23.1%</b>	<b>5.2%</b>
EDLD		186		213		237		108	0.0%	-54.4%
EDUC	178	519	94	381	78	396	60	558	-23.1%	40.9%
<b>Curriculum &amp; Instruction</b>	<b>387</b>	<b>960</b>	<b>309</b>	<b>918</b>	<b>262</b>	<b>792</b>	<b>389</b>	<b>690</b>	<b>48.5%</b>	<b>-12.9%</b>
CSDV		339		360		321		366	0.0%	14.0%
ECED	74	27	54	60	21		78	54	271.4%	100.0%
ELEM	54	63	48	42		51	33		100.0%	-100.0%
FACS							18		100.0%	N/A
READ	235	291	186	303	194	261	256	198	32.0%	-24.1%
SCED									0.0%	0.0%
SPED		234		153		153		69	0.0%	-54.9%
VCED	24	6	21		47	6	4	3	-91.5%	-50.0%
<b>Physical Education</b>	<b>183</b>	<b>2,538</b>	<b>102</b>	<b>1,254</b>	<b>142</b>	<b>765</b>	<b>309</b>	<b>1,113</b>	<b>117.6%</b>	<b>45.5%</b>
HLTH	90	3	69	3	81	6	150	3	85.2%	-50.0%
PHED	35	3	33	3	61	9	81		32.8%	-100.0%
SPMA	58						78		100.0%	0.0%
<b>WPDC</b>	<b>0</b>	<b>1,266</b>	<b>0</b>	<b>624</b>	<b>0</b>	<b>375</b>	<b>0</b>	<b>555</b>	<b>0.0%</b>	<b>48.0%</b>
WPDC		1,266		624		375		555	0.0%	48.0%
<b>Visual &amp; Performing Arts</b>										
<b>Art &amp; Design</b>	<b>316</b>	<b>60</b>	<b>354</b>	<b>(323)</b>	<b>(606)</b>	<b>(401)</b>	<b>340</b>	<b>152</b>	<b>-156.1%</b>	<b>-137.9%</b>
ARTA				61				68	0.0%	100.0%
ARTE	54	36	57		15		33	36	120.0%	100.0%
ARTH	102	12	87		15		96	39	540.0%	100.0%
ARTS	159	12	171	(192)	(318)	(201)	177	9	-155.7%	-104.5%
ARTT			39	(132)	(217)	(136)			-100.0%	-100.0%
INDS	1			(60)	(101)	(65)	34		-133.7%	-100.0%
<b>Dance/Theatre</b>	<b>61</b>	<b>0</b>	<b>32</b>	<b>255</b>	<b>45</b>	<b>273</b>	<b>33</b>	<b>0</b>	<b>-26.7%</b>	<b>-100.0%</b>
DANA				255		273			0.0%	-100.0%
DANT	21		4		15		15		0.0%	0.0%
THRA	18		25		15		3		-80.0%	0.0%
THRT	22		3		15		15		0.0%	0.0%
<b>Music</b>	<b>158</b>	<b>84</b>	<b>153</b>	<b>96</b>	<b>146</b>	<b>82</b>	<b>87</b>	<b>80</b>	<b>-40.4%</b>	<b>-1.8%</b>
MUSA	11	9	12	12	15	6	3	11	-80.0%	100.0%
MUST	147	75	141	84	131	76	84	69	-35.9%	-9.2%
<b>Other</b>	<b>0</b>	<b>150</b>	<b>0</b>	<b>255</b>	<b>0</b>	<b>273</b>	<b>0</b>	<b>264</b>	<b>0.0%</b>	<b>-3.3%</b>
VPAS		150		255		273		264	0.0%	-3.3%

**Average Number of Student Credit Hours Taught by Full-Time Teaching Faculty\***  
(Performance Funding Indicator 3B)

COLLEGE/DEPARTMENT	FALL 2002		FALL 2003		FALL 2004		FALL 2005		FALL 2006		5-YEAR AVERAGE	
	headcount	avg. hrs.	headcount	avg. hrs.	headcount	avg. hrs.	headcount	avg. hrs.	headcount	avg. hrs.	headcount	avg. hrs.
<b>ARTS &amp; SCIENCES</b>	<b>131</b>	<b>246</b>	<b>135</b>	<b>235</b>	<b>132</b>	<b>220</b>	<b>132</b>	<b>204</b>	<b>132</b>	<b>214</b>	<b>132</b>	<b>224</b>
Biology	14	165	14	172	14	155	14	136	14	153	14	156
Chemistry and Physics	14	208	14	181	15	162	15	145	12	152	14	170
English	20	239	24	191	21	199	21	192	20	189	21	202
History	11	365	10	381	9	379	10	326	10	306	10	351
Human Nutrition	5	201	5	212	6	165	6	167	6	155	6	180
Mass Communication	7	185	13	309	7	179	7	176	7	181	8	206
Mathematics	11	357	6	215	13	293	12	281	13	328	11	295
Modern and Classical Lang.	9	122	8	206	5	174	5	136	6	164	7	160
Philosophy & Religious Studies	3	276	3	290	3	305	5	274	5	300	4	289
Political Science	8	319	9	289	10	232	8	215	8	254	9	262
Psychology	13	224	13	208	13	208	13	202	13	212	13	211
Social Work	6	195	6	188	6	149	6	134	8	96	6	152
Sociology	7	402	7	347	7	330	7	302	8	306	7	338
Speech	3	210	3	237	3	276	3	197	2	236	3	231
<b>BUSINESS ADMINISTRATION</b>	<b>40</b>	<b>261</b>	<b>40</b>	<b>273</b>	<b>36</b>	<b>306</b>	<b>43</b>	<b>261</b>	<b>41</b>	<b>259</b>	<b>40</b>	<b>272</b>
Accounting, Finance & Econ.	16	249	17	247	15	244	17	260	17	262	16	253
Computer Science & Quan. Meth.	10	256	10	302	9	360	10	277	9	270	10	293
Management & Marketing	14	277	13	284	12	342	16	251	15	248	14	281
<b>EDUCATION</b>	<b>39</b>	<b>203</b>	<b>44</b>	<b>179</b>	<b>42</b>	<b>194</b>	<b>48</b>	<b>178</b>	<b>46</b>	<b>174</b>	<b>44</b>	<b>185</b>
Center for Pedagogy	10	257	13	210	13	245	16	185	16	200	14	168
Counseling and Leadership	6	91	6	122	-	-	-	-	-	-	-	-
Curriculum and Instruction	14	204	16	164	19	154	21	161	19	162	18	169
Health and Physical Education	9	216	9	199	10	201	11	199	11	155	10	194
<b>VISUAL &amp; PERFORMING ARTS</b>	<b>44</b>	<b>138</b>	<b>45</b>	<b>137</b>	<b>45</b>	<b>130</b>	<b>41</b>	<b>133</b>	<b>46</b>	<b>125</b>	<b>44</b>	<b>132</b>
Art and Design	20	171	22	153	20	139	21	158	21	149	21	154
Music	15	87	14	83	17	82	13	91	16	93	15	87
Theatre And Dance	9	147	9	183	8	208	7	133	9	123	8	159
<b>TOTAL</b>	<b>254</b>	<b>223</b>	<b>264</b>	<b>215</b>	<b>255</b>	<b>212</b>	<b>264</b>	<b>197</b>	<b>265</b>	<b>198</b>	<b>260</b>	<b>209</b>

\*NOTE: For this performance indicator full-time teaching faculty is defined as full-time, unclassified faculty at the rank of instructor, assistant professor, associate professor, professor at institutions, who teach at least three credit hours, measured in the fall semester. Unclassified employees who hold positions above department chair, such as deans, vice presidents, and presidents are excluded.

**AVERAGE CLASS SIZE OF LECTURE/LAB  
BY DISCIPLINE AND LEVEL**

Program Code	Discipline	2003		2004		2005		2006	
		Lower Div.	Upper Div.	Lower Div.	Upper Div.	Lower Div.	Upper Div.	Lower Div.	Upper Div.
0300	Natural Resources and Conservation	21	9.5	18.00	1.00	19.00			
0500	Area, Ethnic, Cultural and Gender Studies	0.00	0.00	0.00	15.00		15.50		9
0900	Communications	24.88	17.23	17.60	16.05	17.89	17.33	20.00	15.82
1100	Computer and Information Sciences	25.00	20.50	23.30	15.70	26.06	12.86	25.05	7.00
1300	Education	23.00	16.81	22.62	19.17	21.63	18.38	21.12	18.70
1600	Foreign Languages and Literatures	18.64	8.63	18.54	9.88	17.02	7.45	17.00	6.64
1900	Home Economics	22.83	14.60	26.13	14.64	27.56	15.27	21.33	11.71
2300	English Language and Literatures	19.99	15.39	19.81	13.66	18.97	11.63	20.22	11.52
2400	Liberal Arts	0.00	0.00	16.77	0.00	19.65		16.93	0.00
2600	Biological Sciences/Life Sciences	34.70	21.38	27.75	18.39	26.47	20.65	22.88	20.25
2700	Mathematics	37.81	12.40	32.80	9.73	35.26	9.64	37.86	10.55
3000	Multi/Interdisciplinary Studies	18.00	12.40	5.33	12.00	17.00	16.00	13.00	9.50
3100	Sport Management	35.00	4.50	29.00	9.33	31.00	12.33	18.25	6.00
3800	Philosophy and Religion	33.40	28.40	34.50	27.71	34.33	27.11	31.11	29.50
4000	Physical Sciences	24.10	14.43	22.33	16.25	21.67	17.00	22.35	16.80
4200	Psychology	42.75	22.32	44.42	19.04	42.42	21.96	38.56	23.65
4400	Public Administration and Services	28.33	14.33	23.50	12.11	22.25	10.33	18.67	10.86
4500	Social Sciences	51.21	19.44	42.80	18.91	37.83	19.06	45.87	15.43
5000	Visual and Performing Arts	23.97	11.00	23.27	11.93	21.95	11.69	20.21	11.19
5100	Communication Disorders, General	*	*	*	*	*	*	21.75	19.00
5200	Business Management and Admin.	42.09	26.65	37.38	27.27	36.87	28.38	38.26	28.50
5400	History	43.64	21.46	40.70	19.47	38.39	20.11	35.12	18.33
	<b>University Total Average</b>	27.47	15.09	25.43	15.33	27.06	16.51	25.28	14.55

\* New program

\*\* In fall 2003, History CIP changed from 4508 to 5401

**DEGREES CONFERRED  
BY LEVEL & SEMESTER  
1995 - 2006**

<b>LEVEL/SEMESTER</b>	<b>95-96</b>	<b>96-97</b>	<b>97-98</b>	<b>98-99</b>	<b>99-00</b>	<b>00-01</b>	<b>01-02</b>	<b>02-03</b>	<b>03-04</b>	<b>04-05</b>	<b>05-06</b>
<b>Undergraduate</b>	<b>685</b>	<b>707</b>	<b>713</b>	<b>688</b>	<b>765</b>	<b>724</b>	<b>770</b>	<b>835</b>	<b>870</b>	<b>900</b>	<b>1,006</b>
Fall	208	209	227	202	261	217	250	279	290	305	327
Spring	398	410	408	391	413	428	425	472	507	508	605
Summer	79	88	78	95	91	79	95	84	73	87	74
<b>Graduate</b>	<b>255</b>	<b>264</b>	<b>264</b>	<b>269</b>	<b>260</b>	<b>219</b>	<b>279</b>	<b>230</b>	<b>287</b>	<b>264</b>	<b>270</b>
Fall	79	72	65	67	75	77	90	58	94	72	83
Spring	125	128	132	124	104	92	110	101	119	133	155
Summer	51	64	67	78	81	50	79	71	74	59	32
<b>Certificate</b>											<b>2</b>
Fall											2
Spring											
Summer											
<b>Total UG, G,&amp; C</b>	<b>385</b>	<b>416</b>	<b>409</b>	<b>442</b>	<b>432</b>	<b>348</b>	<b>453</b>	<b>385</b>	<b>434</b>	<b>410</b>	<b>1,278</b>

**GRADUATE DEGREES CONFERRED  
BY DEGREE PROGRAM & SEMESTER  
2001 - 2005**

DEGREE PROGRAM	2002	2003	2003	2003	2004	2004	2004	2005	2005	2005	2006	2006
	FALL	SPR	SUM	FALL	SPR	SUM	FALL	SPR	SUM	FALL	SPR	SUM
<b>ARTS &amp; SCIENCES</b>	<b>12</b>	<b>27</b>	<b>9</b>	<b>12</b>	<b>33</b>	<b>2</b>	<b>5</b>	<b>32</b>	<b>1</b>	<b>16</b>	<b>31</b>	<b>2</b>
M.S. Biology	1	3	1	3	2	0	0	6	1	5	2	1
M.A. English	0	1	2	0	4	0	1	3	0	1	3	0
Certificate Gerontology										0	0	0
M.S. Human Nutrition	2	2	1	5	1	0	3	3	0	4	3	1
M.A. History	2	3	2	0	2	1	1	2	0	0	1	0
M.L.A. Liberal Arts	6	2	0	0	5	0	0	1	0	3	4	0
MMTH Mathematics	0	0	0	1	3	1	0	0	0	2	0	0
M.S. School Psychology	0	8	0	0	6	0	0	8	0		8	
S.S.P. School Psychology	0	7	0	0	9	0	0	8	0		9	
M.A. Spanish	1	1	3	3	1	0	0	1	0	1	1	0
<b>BUSINESS ADMINISTRATION</b>	<b>26</b>	<b>31</b>	<b>18</b>	<b>42</b>	<b>34</b>	<b>29</b>	<b>36</b>	<b>47</b>	<b>22</b>	<b>29</b>	<b>46</b>	<b>12</b>
Certificate Business Administration										0		
M.B.A. Business Administration	26	19	18	39	23	29	30	30	22	26	36	12
Executive MBA	0	10	0	1	8	0	0	15	0	1	8	0
P.B. Cert. Software Engineering		2	0	2	3	0	3	1	0	0	1	
M.S. Software Engineering							3	1	0	2	1	0
<b>EDUCATION</b>	<b>19</b>	<b>34</b>	<b>44</b>	<b>34</b>	<b>47</b>	<b>41</b>	<b>30</b>	<b>58</b>	<b>28</b>	<b>33</b>	<b>67</b>	<b>16</b>
M. Ed. Education Admin & Super										1	25	7
M.A.T. Business Education	1	1	0	0	0	0	1	3	0			
M. Ed. Counseling & Development		9	3	0	14	3	1	25	2	0	17	0
M.Ed. Curriculum and Instruction			0	4	0	1	4	0	0	12	3	0
M.Ed. Educational Leadership	4	3	6	10	9	8	16	13	4	0		0
Ed. S. Educational Administration												
M. Ed. Elementary Education	0	1	3	0	2	1						
M. Ed. Middle Level Education	6	3	0	11	0	0	0	0	0	12	1	0
M.A.T. Art Education (K-12)			0	0	2	0	0	0	0	0		
M.A.T. Music Education (K-12)	1	1	1	0	0	0	0	2	0	0		
M.A.T. Physical Education (K-12)	3	0	0	1	0	0	0	1	0	0		
M.S. Physical Education	0	2	2	0	0	0	2	1	2	0		1
M. Ed. Reading	3	2	23	4	3	24	2	3	18	0	5	8
M. Ed. Secondary Education	0	3	2	0	0	1						
M.A.T. Secondary Education	1	9	2	3	14	2	1					
M. Ed. Special Education	0	0	2	1	3	1	2	0	1	6	3	0
M.A.T. Teacher Education- Art							0	2	0	0	3	0
M.A.T. Teacher Education- Biology							0	1	0			
M.A.T. Teacher Education- Business							0	0	0			
M.A.T. Teacher Education- PE										0	1	0
M.A.T. Secondary Education-Business										1	2	0
M.A.T. Secondary Education-English							1	2	1	1	2	0
M.A.T. Secondary Education-Fam&Cons S										0	1	0
M.A.T. Secondary Education-French							0	0	0	0	2	0
M.A.T. Secondary Education-Soc Stud							0	4	0	0	2	0
M.A.T. Secondary Education-SPAN							0	1	0			
<b>VISUAL &amp; PERFORMING ARTS</b>	<b>1</b>	<b>9</b>	<b>0</b>	<b>3</b>	<b>3</b>	<b>2</b>	<b>4</b>	<b>7</b>	<b>6</b>	<b>6</b>	<b>11</b>	<b>2</b>
M.F.A Art and Design		2	0	0	0	0	2	2	0	0	3	0
M.A. Art Administration										4	1	1
M.A. Art Education			0	2	1	1	1	0	0	1	1	0
M.M. Conducting	1	2	0	0	1	1	0	4	3	0	3	0
M.M.E. Music Education			0	0	0	0	0	0	1	0	2	1
M.M. Music Performance		5	0	1	1	0	1	1	2	1	1	0
<b>TOTAL</b>	<b>58</b>	<b>101</b>	<b>71</b>	<b>91</b>	<b>117</b>	<b>74</b>	<b>75</b>	<b>144</b>	<b>57</b>	<b>84</b>	<b>155</b>	<b>32</b>



**UNDERGRADUATE DEGREES CONFERRED  
BY DEGREE PROGRAM & SEMESTER  
2002 - 2006**

DEGREE PROGRAM	2002	2003	2003	2003	2004	2004	2004	2005	2005	2005	2006	2006
	FALL	SPR	SUM	FALL	SPR	SUM	FALL	SPR	SUM	FALL	SPR	SUM
<b>ARTS &amp; SCIENCES</b>	<b>107</b>	<b>200</b>	<b>42</b>	<b>120</b>	<b>220</b>	<b>32</b>	<b>132</b>	<b>236</b>	<b>37</b>	<b>145</b>	<b>280</b>	<b>30</b>
B.S. Biology	6	26	5	9	25	5	16	31	4	12	28	1
B.S. Chemistry	5	3	0	1	4	0	1	4	1	0	7	0
B.A. Economics					1	0	1	2	2			
B.A. English	6	15	1	9	12	0	4	16	2	16	19	2
B.A. Environmental Science/Studies					2	1	2	1	1	1	3	1
B.S. Environmental Science							2	1	0	0	3	0
B.S. Human Nutrition	6	2	0	2	2	0	6	4	0	2	11	0
Certificate in Gerontology				3	2	0	0	1	0	1	1	0
B.S. Integrated Marketing Comm.	10	17	2	11	26	2	16	19	0	11	19	0
B.A. History	14	17	5	8	22	2	9	22	2	15	29	1
B.A. Mass Communication	8	11	0	11	15	3	11	23	1	10	21	3
B.A. Gen. Communication Disorders	7	12	1	3	11	1	4	11	3	4	16	1
B.A. Mathematics	1	1	1	1	6	0	2	2	0	2	5	0
B.S. Mathematics	0	7	0	2	4	0	0	2	0	1	3	0
B.S. Medical Technology	0	0	1	0	0	0	0	0	0	0		0
B.A. Modern Languages	1	4	0	2	5	0	6	6	1	3	9	2
B.A. Philosophy & Religion	2	4	2	0	6	0	0	2	1	1	5	2
B.A. Political Science	8	30	3	11	14	2	10	19	3	17	31	7
B.A. Psychology	16	23	7	23	33	6	17	36	3	23	38	3
B.S. Science Communication	0	0	0	0	2	0	0	1	0			
B.S.W. Social Work	8	13	11	11	16	5	8	18	8	12	12	0
B.A. Sociology	9	15	3	13	12	5	17	15	5	14	20	7
<b>BUSINESS ADMINISTRATION</b>	<b>94</b>	<b>93</b>	<b>21</b>	<b>83</b>	<b>111</b>	<b>15</b>	<b>83</b>	<b>75</b>	<b>25</b>	<b>76</b>	<b>99</b>	<b>19</b>
B.S. Business Administration	90	90	20	77	105	15	78	69	22	69	92	18
B.A. Economics					1	0	1	2	2	0	1	0
B.S. Computer Science	4	3	1	6	5	0	4	4	1	7	6	1
<b>EDUCATION</b>	<b>50</b>	<b>109</b>	<b>9</b>	<b>53</b>	<b>103</b>	<b>15</b>	<b>57</b>	<b>95</b>	<b>15</b>	<b>64</b>	<b>130</b>	<b>18</b>
B.S. Business Education	2											
B.S. Early Childhood Education	8	24	2	11	30	3	11	26	1	9	30	0
B.S. Elementary Education	16	45	2	14	39	5	14	29	2	25	31	0
B.S. Family Consumer Sciences	6	6	1	13	12	5	13	11	9	11	24	8
B.S. Physical Education	10	8	2	3	14	0	6	6	1	9	20	3
B.S. Special Education	4	14	0	3	2	1	7	14	0	4	12	0
B.S. Sport Management	4	12	2	9	6	1	6	9	2	6	13	7
<b>VISUAL &amp; PERFORMING ARTS</b>	<b>28</b>	<b>69</b>	<b>12</b>	<b>37</b>	<b>76</b>	<b>11</b>	<b>34</b>	<b>96</b>	<b>12</b>	<b>43</b>	<b>96</b>	<b>7</b>
B.A. Art	4	8	5	4	17	5	7	11	4	13	17	1
B.A. Art History	1	5	0	2	5	0	2	1	0	1	5	0
B.F.A. Art	15	24	3	22	25	3	14	36	5	14	41	4
B.A. Dance	0	8	0	1	9	0	4	6	0	6	10	0
B.A. Music	3	6	2	1	0	0	2	5	0	2	3	1
B.M.E. Music Education (Choral)	1	2	0	0	5	0	1	4	0	1	3	1
B.M.E. Music Education (Instrumental)	0	3	1	1	4	0	1	4	0	0	1	0
B.M. Music Performance	0	4	1	1	1	1	0	9	2	1	1	0
B.A. Theatre	4	9	0	5	10	2	3	20	1	5	15	0
<b>TOTAL</b>	<b>279</b>	<b>471</b>	<b>84</b>	<b>293</b>	<b>510</b>	<b>73</b>	<b>306</b>	<b>502</b>	<b>89</b>	<b>328</b>	<b>605</b>	<b>74</b>

# WINTHROP UNIVERSITY RETENTION & GRADUATION RATES

## ALL FULL-TIME FIRST-TIME FRESHMEN

Fall	#	Retention Rate			%	Cumulative Graduation & Continuation Rate			
		after				Grad.	Within 5 Years		Within 6 Years
		1-Year	2-Year	3-Year	4-Year		Graduated	Continued	Graduated
1997	909	75.2%	66.8%	61.4%	30.0%	50.2%	7.7%	54.9%	2.1%
1998	826	77.1%	67.4%	63.7%	31.5%	51.2%	6.7%	56.1%	2.5%
1999	965	77.8%	69.5%	65.2%	32.4%	54.7%	6.6%	59.7%	2.3%
2000	904	74.5%	67.0%	63.2%	32.4%	54.3%	5.4%	57.9%	1.8%
2001	940	74.3%	66.0%	62.3%	31.5%	54.1%	5.9%		
2002	1086	77.6%	67.8%	63.1%	35.1%				
2003	1074	76.4%	66.4%	63.4%					
2004	999	71.8%	62.5%						
2005	1017	74.8%							

Last Updated: 5/7/2007

SOURCE: INSTITUTIONAL RESEARCH 5-4

**TOTAL FULL-TIME FACULTY HEADCOUNT  
FALL 1997 - FALL 2006**

COLLEGE/DEPARTMENT	Fall 1997	Fall 1998	Fall 1999	Fall 2000	Fall 2001	Fall 2002	Fall 2003	Fall 2004	Fall 2005	Fall 2006
<b>ARTS &amp; SCIENCES</b>	<b>133</b>	<b>132</b>	<b>134</b>	<b>138</b>	<b>138</b>	<b>145</b>	<b>141</b>	<b>139</b>	<b>148</b>	<b>149</b>
Biology	13	13	13	13	14	14	14	14	15	16
Chemistry and Physics	11	11	11	12	14	14	14	16	15	17
English	24	22	24	25	23	24	24	23	24	24
History	10	10	8	11	9	11	11	10	10	10
Human Nutrition	5	6	6	6	7	7	7	7	7	6
Mass Communication	6	6	6	6	6	6	6	7	7	7
Mathematics	15	14	13	14	14	13	13	13	12	13
Modern and Classical Languages	9	9	11	10	9	9	8	5	6	8
Philosophy and Religious Studies	3	3	3	3	3	3	3	3	5	5
Political Science	8	8	7	8	7	10	10	10	9	8
Psychology	15	15	16	14	15	17	14	15	19	16
Social Work	5	6	6	6	6	7	7	6	7	8
Sociology	6	6	7	7	8	7	7	7	9	9
Speech	3	3	3	3	3	3	3	3	3	2
<b>BUSINESS ADMINISTRATION*</b>	<b>47</b>	<b>45</b>	<b>46</b>	<b>51</b>	<b>49</b>	<b>51</b>	<b>48</b>	<b>47</b>	<b>53</b>	<b>51</b>
Accounting, Finance & Economics	15	15	15	17	16	17	17	15	20	18
Computer Science & Quant. Methods	10	10	10	11	11	11	9	12	11	10
Management and Marketing	22	20	21	23	22	23	22	20	22	23
<b>EDUCATION*</b>	<b>53</b>	<b>48</b>	<b>50</b>	<b>53</b>	<b>49</b>	<b>48</b>	<b>51</b>	<b>52</b>	<b>48</b>	<b>56</b>
Center for Pedagogy	11	14	16	16	14	12	17	17	16	20
Counseling and Leadership**	8	7	8	7	7	6	7	7	0	0
Curriculum and Instruction	25	20	19	21	19	21	17	17	21	25
Health and Physical Education	9	7	7	9	9	9	10	11	11	11
<b>VISUAL &amp; PERFORMING ARTS</b>	<b>46</b>	<b>48</b>	<b>49</b>	<b>49</b>	<b>48</b>	<b>49</b>	<b>51</b>	<b>47</b>	<b>51</b>	<b>50</b>
Art and Design	21	22	22	23	22	24	25	21	23	22
Music	17	17	18	17	16	15	16	17	17	18
Theatre and Dance	8	9	9	9	10	10	10	9	11	10
<b>LIBRARY</b>	<b>14</b>	<b>13</b>	<b>14</b>	<b>14</b>	<b>13</b>	<b>14</b>	<b>13</b>	<b>13</b>	<b>13</b>	<b>12</b>
<b>ACADEMIC AFFAIRS</b>	<b>1</b>	<b>1</b>	<b>1</b>	<b>1</b>	<b>1</b>	<b>1</b>	<b>1</b>	<b>1</b>	<b>1</b>	<b>1</b>
<b>TOTAL</b>	<b>294</b>	<b>287</b>	<b>294</b>	<b>306</b>	<b>298</b>	<b>308</b>	<b>305</b>	<b>299</b>	<b>314</b>	<b>319</b>

\* In the College of Education and the College of Business Administration, faculty have moved between departments during the 9-year period shown.

\*\* Became a part of Curriculum & Instruction

**COMPARISON OF FALL 2005 AND FALL 2006  
TOTAL FULL-TIME FACULTY  
TENURED, DOCTORATE, AND TERMINAL DEGREE**

COLLEGE/DEPARTMENT	TENURED				TERMINAL DEGREE				DOCTORATE DEGREE			
	2005		2006		2005		2006		2005		2006	
	#	% OF FT	#	% OF FT	#	% OF FT	#	% OF FT	#	% OF FT	#	% OF FT
<b>ARTS &amp; SCIENCES</b>	<b>83</b>	<b>58.5%</b>	<b>78</b>	<b>53.1%</b>	<b>124</b>	<b>87.3%</b>	<b>120</b>	<b>81.6%</b>	<b>115</b>	<b>81.0%</b>	<b>120</b>	<b>81.6%</b>
Biology	10	71.4%	9	56.3%	13	92.9%	14	87.5%	13	92.9%	14	87.5%
Chemistry & Physics	7	46.7%	7	43.8%	14	93.3%	15	93.8%	14	93.3%	15	93.8%
English	11	50.0%	12	52.2%	16	72.7%	16	69.6%	14	63.6%	16	69.6%
History	7	70.0%	8	80.0%	10	100.0%	10	100.0%	10	100.0%	10	100.0%
Human Nutrition	3	50.0%	3	50.0%	3	50.0%	3	50.0%	3	50.0%	3	50.0%
Mass Communication	4	57.1%	4	57.1%	5	71.4%	5	71.4%	5	71.4%	5	71.4%
Mathematics	7	58.3%	7	53.8%	9	75.0%	10	76.9%	9	75.0%	9	69.2%
Modern & Classical Lang.	4	80.0%	4	50.0%	5	100.0%	7	87.5%	5	100.0%	7	87.5%
Phil. and Religious Studies	1	20.0%	0	0.0%	5	100.0%	5	100.0%	5	100.0%	5	100.0%
Political Science	5	55.6%	5	62.5%	9	100.0%	8	100.0%	9	100.0%	8	100.0%
Psychology	11	61.1%	10	62.5%	17	94.4%	15	93.8%	16	88.9%	15	93.8%
Social Work	6	85.7%	4	50.0%	7	100.0%	5	62.5%	4	57.1%	6	75.0%
Sociology	5	55.6%	4	44.4%	9	100.0%	6	66.7%	6	66.7%	6	66.7%
Speech	2	66.7%	1	50.0%	2	66.7%	1	50.0%	2	66.7%	1	50.0%
<b>BUSINESS ADMIN.</b>	<b>25</b>	<b>48.1%</b>	<b>26</b>	<b>52.0%</b>	<b>40</b>	<b>76.9%</b>	<b>38</b>	<b>76.0%</b>	<b>37</b>	<b>71.2%</b>	<b>38</b>	<b>76.0%</b>
Acc., Finance & Econ.	10	52.6%	11	61.1%	15	78.9%	13	72.2%	13	68.4%	13	72.2%
Comp. Sci. & Quant. Meth.	4	36.4%	4	40.0%	9	81.8%	9	90.0%	9	81.8%	9	90.0%
Management & Marketing	11	50.0%	11	50.0%	16	72.7%	16	72.7%	15	68.2%	16	72.7%
<b>EDUCATION</b>	<b>16</b>	<b>29.6%</b>	<b>18</b>	<b>32.7%</b>	<b>42</b>	<b>77.8%</b>	<b>43</b>	<b>78.2%</b>	<b>35</b>	<b>64.8%</b>	<b>42</b>	<b>76.4%</b>
Center for Pedagogy	5	29.4%	8	42.1%	16	94.1%	18	94.7%	16	94.1%	17	89.5%
Curriculum & Instruction	8	30.8%	7	28.0%	16	61.5%	17	68.0%	12	46.2%	17	68.0%
Health & Physical Edu.	3	27.3%	3	27.3%	10	90.9%	8	72.7%	7	63.6%	8	72.7%
<b>VISUAL &amp; PERF. ARTS</b>	<b>28</b>	<b>58.3%</b>	<b>25</b>	<b>51.0%</b>	<b>34</b>	<b>70.8%</b>	<b>33</b>	<b>67.3%</b>	<b>15</b>	<b>31.3%</b>	<b>17</b>	<b>34.7%</b>
Art & Design	13	56.5%	12	54.5%	16	69.6%	13	59.1%	3	13.0%	3	13.6%
Music	12	70.6%	10	55.6%	12	70.6%	13	72.2%	11	64.7%	13	72.2%
Theatre and Dance	3	37.5%	3	33.3%	6	75.0%	7	77.8%	1	12.5%	1	11.1%
<b>LIBRARY</b>	<b>8</b>	<b>61.5%</b>	<b>8</b>	<b>66.7%</b>	<b>11</b>	<b>84.6%</b>	<b>2</b>	<b>16.7%</b>	<b>1</b>	<b>7.7%</b>	<b>1</b>	<b>8.3%</b>
<b>OTHER</b>	<b>5</b>	<b>62.5%</b>	<b>1</b>	<b>20.0%</b>	<b>6</b>	<b>75.0%</b>	<b>2</b>	<b>40.0%</b>	<b>6</b>	<b>75.0%</b>	<b>2</b>	<b>40.0%</b>
<b>TOTAL</b>	<b>165</b>	<b>52.1%</b>	<b>156</b>	<b>49.1%</b>	<b>257</b>	<b>81.1%</b>	<b>238</b>	<b>74.8%</b>	<b>209</b>	<b>65.9%</b>	<b>220</b>	<b>69.2%</b>

VI-2 SOURCE: INSTITUTIONAL RESEARCH

**COMPARISON OF FALL 2005 AND FALL 2006  
FULL-TIME INSTRUCTIONAL FACULTY  
TENURED, DOCTORATE, AND TERMINAL DEGREE**

COLLEGE/DEPARTMENT	TENURED				TERMINAL DEGREE				DOCTORATE DEGREE			
	2005		2006		2005		2006		2005		2006	
	#	% OF FT Instr	#	% OF FT Instr	#	% OF FT Instr	#	% OF FT Instr	#	% OF FT Instr	#	% OF FT Instr
<b>ARTS &amp; SCIENCES</b>	<b>80</b>	<b>59.3%</b>	<b>75</b>	<b>54.3%</b>	<b>118</b>	<b>87.4%</b>	<b>113</b>	<b>81.9%</b>	<b>108</b>	<b>80.0%</b>	<b>113</b>	<b>81.9%</b>
Biology	10	71.4%	9	60.0%	13	92.9%	14	93.3%	13	92.9%	14	93.3%
Chemistry & Physics	7	46.7%	7	46.7%	14	93.3%	15	100.0%	14	93.3%	15	100.0%
English	10	47.6%	10	47.6%	15	71.4%	14	66.7%	13	61.9%	14	66.7%
History	7	70.0%	8	80.0%	10	100.0%	10	100.0%	10	100.0%	10	100.0%
Human Nutrition	3	50.0%	3	50.0%	3	50.0%	3	50.0%	3	50.0%	3	50.0%
Mass Communication	4	57.1%	4	57.1%	5	71.4%	5	71.4%	5	71.4%	5	71.4%
Mathematics	7	58.3%	7	53.8%	9	75.0%	10	76.9%	9	75.0%	9	69.2%
Modern & Classical Lang.	4	80.0%	4	57.1%	5	100.0%	6	85.7%	5	100.0%	6	85.7%
Phil. and Religious Studies	1	20.0%	0	0.0%	5	100.0%	5	100.0%	5	100.0%	5	100.0%
Political Science	5	55.6%	5	62.5%	9	100.0%	8	100.0%	9	100.0%	8	100.0%
Psychology	10	71.4%	9	69.2%	14	100.0%	12	92.3%	12	85.7%	12	92.3%
Social Work	5	83.3%	4	50.0%	6	100.0%	5	62.5%	3	50.0%	6	75.0%
Sociology	5	62.5%	4	50.0%	8	100.0%	5	62.5%	5	62.5%	5	62.5%
Speech	2	66.7%	1	50.0%	2	66.7%	1	50.0%	2	66.7%	1	50.0%
<b>BUSINESS ADMIN.</b>	<b>24</b>	<b>55.8%</b>	<b>24</b>	<b>57.1%</b>	<b>37</b>	<b>86.0%</b>	<b>36</b>	<b>85.7%</b>	<b>34</b>	<b>79.1%</b>	<b>36</b>	<b>85.7%</b>
Acc., Finance & Econ.	10	58.8%	11	64.7%	14	82.4%	13	76.5%	12	70.6%	13	76.5%
Comp. Sci. & Quant. Meth.	4	40.0%	4	44.4%	9	90.0%	9	100.0%	9	90.0%	9	100.0%
Management & Marketing	10	62.5%	9	56.3%	14	87.5%	14	87.5%	13	81.3%	14	87.5%
<b>EDUCATION</b>	<b>16</b>	<b>33.3%</b>	<b>16</b>	<b>34.8%</b>	<b>40</b>	<b>83.3%</b>	<b>39</b>	<b>84.8%</b>	<b>33</b>	<b>68.8%</b>	<b>38</b>	<b>82.6%</b>
Center for Pedagogy	5	31.3%	7	43.8%	15	93.8%	16	100.0%	15	93.8%	15	93.8%
Curriculum & Instruction	8	38.1%	6	31.6%	15	71.4%	15	78.9%	11	52.4%	15	78.9%
Health & Physical Edu.	3	27.3%	3	27.3%	10	90.9%	8	72.7%	7	63.6%	8	72.7%
<b>VISUAL &amp; PERF. ARTS</b>	<b>26</b>	<b>59.1%</b>	<b>25</b>	<b>53.2%</b>	<b>31</b>	<b>70.5%</b>	<b>32</b>	<b>68.1%</b>	<b>14</b>	<b>31.8%</b>	<b>17</b>	<b>36.2%</b>
Art & Design	13	59.1%	12	57.1%	15	68.2%	12	57.1%	3	13.6%	3	14.3%
Music	11	73.3%	10	58.8%	11	73.3%	13	76.5%	10	66.7%	13	76.5%
Theatre and Dance	2	28.6%	3	33.3%	5	71.4%	7	77.8%	1	14.3%	1	11.1%
<b>TOTAL</b>	<b>146</b>	<b>54.1%</b>	<b>140</b>	<b>51.3%</b>	<b>226</b>	<b>83.7%</b>	<b>220</b>	<b>80.6%</b>	<b>189</b>	<b>70.0%</b>	<b>204</b>	<b>74.7%</b>

VI-3 SOURCE: INSTITUTIONAL RESEARCH

**FULL-TIME INSTRUCTIONAL\* FACULTY  
BY RANK AND DEPARTMENT  
FALL 2004 - FALL 2006**

COLLEGE/DEPARTMENT	PROFESSOR			ASSOCIATE PROFESSOR			ASSISTANT PROFESSOR			INSTRUCTOR		
	2004	2005	2006	2004	2005	2006	2004	2005	2006	2004	2005	2006
<b>ARTS &amp; SCIENCES</b>	<b>35</b>	<b>38</b>	<b>35</b>	<b>39</b>	<b>41</b>	<b>39</b>	<b>37</b>	<b>37</b>	<b>42</b>	<b>20</b>	<b>19</b>	<b>22</b>
Biology	4	6	5	4	3	3	5	4	6	1	1	1
Chemistry & Physics	5	5	5	2	2	2	6	6	7	2	2	1
English	4	4	4	5	6	6	4	5	6	8	6	5
History	1	1	1	4	6	6	4	3	3	0	0	0
Human Nutrition	1	1	1	2	2	2	1	0	0	1	3	3
Mass Communication	1	1	1	3	3	3	1	2	2	2	1	1
Mathematics	4	4	5	1	2	1	5	3	4	3	3	3
Modern & Classical Lang.	1	1	3	3	3	3	0	0	0	1	1	2
Phil. and Religious Studies	1	1	0	0	0	0	2	4	5	0	0	0
Political Science	2	3	2	3	2	3	4	4	3	1	0	0
Psychology	3	3	2	7	7	7	3	4	3	0	0	1
Social Work	2	2	2	4	4	3	0	0	1	0	0	2
Sociology	5	5	4	0	0	0	2	2	2	0	1	2
Speech	1	1	0	1	1	1	0	0	0	1	1	1
<b>BUSINESS ADMIN.</b>	<b>10</b>	<b>13</b>	<b>13</b>	<b>21</b>	<b>20</b>	<b>19</b>	<b>5</b>	<b>9</b>	<b>10</b>	<b>0</b>	<b>1</b>	<b>0</b>
Acc., Finance & Econ.	3	5	6	12	11	10	0	1	1	0	0	0
Comp. Sci. & Quant. Method	3	3	3	4	4	4	2	2	2	0	1	0
Management & Marketing	4	5	4	5	5	5	3	6	7	0	0	0
<b>EDUCATION</b>	<b>10</b>	<b>9</b>	<b>7</b>	<b>8</b>	<b>10</b>	<b>11</b>	<b>19</b>	<b>21</b>	<b>21</b>	<b>4</b>	<b>8</b>	<b>7</b>
Center for Pedagogy	3	2	2	3	4	5	7	9	8	0	1	1
Counseling & Leadership	2	0	0	0	0	0	1	0	0	0	0	0
Curriculum & Instruction	3	5	3	3	4	5	7	6	7	2	6	4
Health & Physical Education	2	2	2	2	2	1	4	6	6	2	1	2
<b>VISUAL &amp; PERF. ARTS</b>	<b>15</b>	<b>15</b>	<b>13</b>	<b>10</b>	<b>14</b>	<b>16</b>	<b>16</b>	<b>11</b>	<b>17</b>	<b>4</b>	<b>4</b>	<b>1</b>
Art & Design	6	6	5	7	7	8	6	8	8	1	1	0
Music	8	8	7	2	3	4	4	1	5	3	3	1
Theatre and Dance	1	1	1	1	4	4	6	2	4	0	0	0
<b>LIBRARY</b>	<b>4</b>	<b>3</b>	<b>5</b>	<b>1</b>	<b>1</b>	<b>2</b>	<b>6</b>	<b>6</b>	<b>4</b>	<b>1</b>	<b>1</b>	<b>1</b>
<b>TOTAL</b>	<b>74</b>	<b>78</b>	<b>73</b>	<b>79</b>	<b>86</b>	<b>87</b>	<b>83</b>	<b>84</b>	<b>94</b>	<b>29</b>	<b>33</b>	<b>31</b>

\* Includes Library.

**FULL-TIME INSTRUCTIONAL\* FACULTY HEADCOUNT  
BY GENDER AND DEPARTMENT  
FALL 2004 - FALL 2006**

COLLEGE/DEPARTMENT	MALE			FEMALE		
	2004	2005	2006	2004	2005	2006
<b>ARTS &amp; SCIENCES</b>	<b>71</b>	<b>74</b>	<b>70</b>	<b>61</b>	<b>61</b>	<b>68</b>
Biology	7	7	7	7	7	8
Chemistry & Physics	8	8	8	7	7	7
English	5	6	6	16	15	15
History	7	8	8	2	2	2
Human Nutrition	2	2	2	4	4	4
Mass Communication	5	5	5	2	2	2
Mathematics	7	7	8	6	5	5
Modern & Classical Lang.	2	2	3	3	3	4
Phil. and Religious Studies	3	4	4	0	1	1
Political Science	8	7	6	2	2	2
Psychology	9	9	7	4	5	6
Social Work	3	3	2	3	3	6
Sociology	4	5	4	3	3	4
Speech	1	1	0	2	2	2
<b>BUSINESS ADMIN.</b>	<b>28</b>	<b>31</b>	<b>30</b>	<b>8</b>	<b>12</b>	<b>12</b>
Acc., Finance & Econ.	14	15	15	1	2	2
Comp. Sci. & Quant. Method	7	7	6	2	3	3
Management & Marketing	7	9	9	5	7	7
<b>EDUCATION</b>	<b>15</b>	<b>14</b>	<b>12</b>	<b>27</b>	<b>34</b>	<b>34</b>
Center for Pedagogy	6	6	6	7	10	10
Counseling & Leadership	2	0		1		0
Curriculum & Instruction	4	5	4	12	16	15
Health & Physical Education	3	3	2	7	8	9
<b>VISUAL &amp; PERF. ARTS</b>	<b>24</b>	<b>25</b>	<b>27</b>	<b>21</b>	<b>19</b>	<b>20</b>
Art & Design	12	14	13	8	8	8
Music	11	10	11	6	5	6
Theatre and Dance	1	1	3	7	6	6
<b>LIBRARY</b>	<b>5</b>	<b>2</b>	<b>4</b>	<b>8</b>	<b>9</b>	<b>8</b>
<b>TOTAL</b>	<b>143</b>	<b>146</b>	<b>143</b>	<b>125</b>	<b>135</b>	<b>142</b>

\* Includes Library.

**FALL 2002 - FALL 2006**

COLLEGE/DEPARTMENT	Fall 2002		Fall 2003		Fall 2004		Fall 2005		Fall 2006	
	#	TT	#	TT	#	TT	#	TT	#	TT
<b>ARTS &amp; SCIENCES</b>	<b>137</b>	<b>109</b>	<b>135</b>	<b>114</b>	<b>132</b>	<b>108</b>	<b>135</b>	<b>111</b>	<b>138</b>	<b>110</b>
Biology	14	11	14	13	14	13	14	13	15	13
Chemistry and Physics	14	10	14	13	15	11	15	11	15	11
English	23	14	23	14	21	14	21	15	21	16
History	11	10	10	9	9	8	10	10	10	10
Human Nutrition	6	4	6	4	6	4	6	3	6	3
Mass Communication	7	6	6	5	7	5	7	5	7	6
Mathematics	12	9	13	11	13	10	12	9	13	9
Modern and Classical Languages	9	7	8	6	5	4	5	4	7	5
Philosophy and Religious Studies	3	3	3	3	3	3	5	4	5	4
Political Science	9	7	10	9	10	9	9	9	8	8
Psychology	13	13	12	12	13	13	14	14	13	12
Social Work	6	6	6	6	6	5	6	5	8	6
Sociology	7	7	7	7	7	7	8	7	8	6
Speech	3	2	3	2	3	2	3	2	2	1
<b>BUSINESS ADMINISTRATION**</b>	<b>40</b>	<b>35</b>	<b>39</b>	<b>33</b>	<b>36</b>	<b>29</b>	<b>43</b>	<b>36</b>	<b>42</b>	<b>37</b>
Accounting, Finance, & Economics	16	15	17	16	15	12	17	13	17	14
Computer Science & Quant. Meth.	10	9	8	7	9	8	10	9	9	9
Management and Marketing	14	11	14	10	12	9	16	14	16	14
<b>EDUCATION**</b>	<b>40</b>	<b>32</b>	<b>42</b>	<b>36</b>	<b>42</b>	<b>34</b>	<b>48</b>	<b>36</b>	<b>46</b>	<b>33</b>
Center for Pedagogy	10	9	12	12	13	13	16	15	16	15
Counseling and Leadership	6	6	5	5	3	3	0	0		
Curriculum and Instruction	15	12	16	13	16	12	21	13	19	11
Health and Physical Education	9	5	9	6	10	6	11	8	11	7
<b>VISUAL &amp; PERFORMING ARTS</b>	<b>45</b>	<b>36</b>	<b>48</b>	<b>36</b>	<b>45</b>	<b>34</b>	<b>44</b>	<b>38</b>	<b>47</b>	<b>40</b>
Art and Design	21	18	23	18	20	16	22	20	21	19
Music	15	14	16	14	17	14	15	12	17	14
Theatre and Dance	9	4	9	4	8	4	7	6	9	7
<b>LIBRARY</b>	<b>14</b>	<b>10</b>	<b>13</b>	<b>9</b>	<b>13</b>	<b>9</b>	<b>11</b>	<b>10</b>	<b>11</b>	<b>10</b>
<b>TOTAL</b>	<b>276</b>	<b>222</b>	<b>277</b>	<b>228</b>	<b>268</b>	<b>214</b>	<b>281</b>	<b>231</b>	<b>284</b>	<b>230</b>

\* Includes Library.

\*\* In the College of Education and the College of Business Administration, faculty have moved between departments during the 5-year period shown.

Notes: # is headcount employed as of October 1; TT is number tenured or holding tenure track appointment.  
Faculty on leave without pay are not counted;



**FULL-TIME INSTRUCTIONAL FACULTY  
BY DEPARTMENT, RACE AND GENDER  
FALL 2006**

COLLEGE/DEPARTMENT	AFRICAN AMERICAN			AMERICAN INDIAN/NATIVE ALASKAN			ASIAN/PACIFIC ISLANDER			HISPANIC			WHITE			TOTAL		
	Male	Female	Total	Male	Female	Total	Male	Female	Total	Male	Female	Total	Male	Female	Total	Male	Female	Total
<b>ARTS &amp; SCIENCES</b>	<b>3</b>	<b>4</b>	<b>7</b>	<b>0</b>	<b>0</b>	<b>0</b>	<b>2</b>	<b>3</b>	<b>5</b>	<b>3</b>	<b>3</b>	<b>6</b>	<b>62</b>	<b>58</b>	<b>120</b>	<b>70</b>	<b>68</b>	<b>138</b>
Biology	0	0	0	0	0	0	1	0	1	0	0	0	6	8	14	7	8	15
Chemistry & Physics	1	1	2	0	0	0	1	0	1	0	0	0	6	6	12	8	7	15
English	0	1	1	0	0	0	0	0	0	0	0	0	6	14	20	6	15	21
History	1	0	1	0	0	0	0	0	0	0	0	0	7	2	9	8	2	10
Human Nutrition	0	0	0	0	0	0	0	0	0	0	0	0	2	4	6	2	4	6
Mass Communication	0	0	0	0	0	0	0	1	1	0	0	0	5	1	6	5	2	7
Mathematics	0	0	0	0	0	0	0	1	1	1	1	2	7	3	10	8	5	13
Modern & Classical Lang.	0	0	0	0	0	0	0	1	1	1	2	3	2	1	3	3	4	7
Phil. and Religious Studies	0	0	0	0	0	0	0	0	0	0	0	0	4	1	5	4	1	5
Political Science	1	0	1	0	0	0	0	0	0	0	0	0	5	2	7	6	2	8
Psychology	0	1	1	0	0	0	0	0	0	0	0	0	7	5	13	7	6	13
Social Work	0	1	1	0	0	0	0	0	0	0	0	0	2	5	7	2	6	0
Sociology	0	0	0	0	0	0	0	0	0	1	0	1	3	4	7	4	4	8
Speech	0	0	0	0	0	0	0	0	0	0	0	0	0	2	2	0	2	2
<b>BUSINESS ADMIN.</b>	<b>3</b>	<b>2</b>	<b>5</b>	<b>0</b>	<b>0</b>	<b>0</b>	<b>4</b>	<b>0</b>	<b>4</b>	<b>0</b>	<b>0</b>	<b>0</b>	<b>23</b>	<b>10</b>	<b>33</b>	<b>30</b>	<b>12</b>	<b>42</b>
Acc., Finance & Econ.	2	0	0	0	0	0	2	0	0	0	0	0	11	2	13	15	2	17
Comp. Sci. & Quant. Method	0	1	1	0	0	0	1	0	1	0	0	0	5	2	7	6	3	9
Management & Marketing	1	1	2	0	0	0	1	0	1	0	0	0	7	6	13	9	7	16
<b>EDUCATION</b>	<b>2</b>	<b>3</b>	<b>5</b>	<b>0</b>	<b>0</b>	<b>0</b>	<b>0</b>	<b>0</b>	<b>0</b>	<b>1</b>	<b>0</b>	<b>1</b>	<b>9</b>	<b>31</b>	<b>40</b>	<b>12</b>	<b>34</b>	<b>46</b>
Center for Pedagogy	0	1	1	0	0	0	0	0	0	1	0	1	5	9	14	6	10	16
Curriculum & Instruction	1	2	3	0	0	0	0	0	0	0	0	0	3	13	16	4	15	19
Health & Physical Education	1	0	1	0	0	0	0	0	0	0	0	0	1	9	10	2	9	11
<b>VISUAL &amp; PERF. ARTS</b>	<b>0</b>	<b>0</b>	<b>0</b>	<b>0</b>	<b>0</b>	<b>0</b>	<b>0</b>	<b>1</b>	<b>1</b>	<b>0</b>	<b>0</b>	<b>0</b>	<b>26</b>	<b>19</b>	<b>45</b>	<b>27</b>	<b>20</b>	<b>47</b>
Art & Design	0	0	0	0	0	0	0	0	0	0	0	0	12	8	20	13	8	21
Music	0	0	0	0	0	0	0	1	1	0	0	0	11	5	16	11	6	17
Theatre and Dance	0	0	0	0	0	0	0	0	0	0	0	0	3	6	9	3	6	9
<b>TOTAL</b>	<b>8</b>	<b>9</b>	<b>17</b>	<b>0</b>	<b>0</b>	<b>0</b>	<b>6</b>	<b>4</b>	<b>10</b>	<b>4</b>	<b>3</b>	<b>7</b>	<b>120</b>	<b>118</b>	<b>238</b>	<b>139</b>	<b>134</b>	<b>273</b>

## DEFINITIONS FOR FINANCIAL INFORMATION

The following schedules provides information taken from the IPEDS reports submitted by Winthrop for the four years 1995-1996 through 1999-2000. Information is grouped by type of funding and program.

Provided on the expenditure schedule is the percentage each program in the Educational and General Operations is (E&G) of total Educational and General Fund Revenue. If the total percentage of E&G expenditures exceeds 100%, this is an indication that revenue other than E&G revenue was used to support E&G activities.

Funding is summarized by Unrestricted and Restricted funds. Restricted funds are those funds received for specific purposes and not available to be used in general operations of the University.

Program descriptions are as follows:

**INSTRUCTION:** Expenditures for academic, vocational, remedial, and technical instruction.

**LIBRARY:** Expenditures for organized activities that directly support the operation catalogued or otherwise classified collection.

**ACADEMIC SUPPORT:** Expenditures to provide support services for instruction, services that directly assist the academic function, media support, academic administration, and course/curriculum development.

**RESEARCH:** Expenditures for activities specifically organized to produce research outcomes, whether commissioned by an agency external to the University or separately budgeted by the University.

**PUBLIC SERVICE:** Expenditures in providing noninstructional services beneficial to individuals and groups external to the institution.

**STUDENT SERVICES:** Expenditures for the office of admission, registrar and those activities whose primary purpose is to contribute to the student's emotional and physical well-being and to his or her intellectual, cultural and social development outside the context of the formal instruction program.

**INSTITUTIONAL SUPPORT:** Expenditures for the following categories: Central executive-level activities concerned with management and long-range planning of the entire institution; fiscal operations including accounting and payroll; administrative data processing; space management; employee personnel and records; logistical activities that provide procurement, storerooms, safety, security, printing and transportation services; support services to faculty and staff that are not operated as auxiliary enterprises; and community and alumni relations, including development and funding raising.

**OPERATIONS AND MAINTENANCE OF PLANT:** Expenditures of current operating funds for the operation and maintenance of physical plant follows: Physical plant administration; building maintenance; custodial services; utilities; landscaping and ground maintenance; and major repairs and renovations.

**SCHOLARSHIPS AND FELLOWSHIPS:** Expenditures for scholarships and fellowships in the form of out-right grants to students selected by the institution and financed from current funds, restricted or unrestricted.

**MANDATORY TRANSFERS:** Transfers from current fund groups to other fund groups arising from binding legal agreements related to the financing of educational plant facilities and grant agreements with agencies of the federal government, donors and other organizations to match gifts and grants to loan and other funds.

**NONMANDATORY TRANSFERS:** Transfer from the current fund groups for purposes such as additions to loan funds, general or specific plant additions, voluntary renewals and replacements of plant and prepayments on debt principal.

**AUXILIARY OPERATIONS:** An entity that exists to furnish goods and services to students, faculty or staff and that charges as fee directly related to, although not necessarily equal to, the cost of the goods or services. Examples of auxiliary operations at Winthrop are as follows: Housing, Cafeteria and health center, vending operations and laundry, and print shop.

## ACADEMIC YEAR STUDENT FEES 1997-2006

<b>STUDENT FEES</b>	<b>1997-98</b>	<b>1998-99</b>	<b>1999-00</b>	<b>2000-01</b>	<b>2001-02</b>	<b>2002-03</b>	<b>2003-04</b>	<b>2004-05</b>	<b>2005-06</b>	<b>2006-07</b>
<b>TUITION</b>										
In-State	3,918	4,032	4,126	4,262	4,668	5,600	6,652	7,816	8,756	9,500
% Difference	2.6%	2.9%	2.3%	3.3%	9.5%	20.0%	18.8%	17.5%	12.0%	8.5%
<b>Out-of-State</b>	<b>7,046</b>	<b>7,250</b>	<b>7,434</b>	<b>7,680</b>	<b>8,756</b>	<b>10,310</b>	<b>12,258</b>	<b>14,410</b>	<b>16,150</b>	<b>17,564</b>
% Difference	2.7%	2.9%	2.5%	3.3%	14.0%	17.7%	18.9%	17.6%	12.1%	8.8%
<b>ROOM &amp; BOARD</b>										
Room	2,260	2,360	2,420	2,500	2,592	2,670	2,770	3,060	3,420	3,560
% Difference	2.0%	4.4%	2.5%	3.3%	3.7%	3.0%	3.7%	10.5%	11.8%	4.1%
<b>Board</b>	<b>1,504</b>	<b>1,544</b>	<b>1,602</b>	<b>1,656</b>	<b>1,746</b>	<b>1,800</b>	<b>1,860</b>	<b>1,932</b>	<b>1,932</b>	<b>2,010</b>
% Difference	4.0%	2.7%	3.8%	3.4%	5.4%	3.1%	3.3%	3.9%	0.0%	4.0%
<b>TOTAL FEES</b>										
<b>In-State</b>	<b>7,682</b>	<b>7,936</b>	<b>8,148</b>	<b>8,418</b>	<b>9,006</b>	<b>10,070</b>	<b>11,282</b>	<b>12,808</b>	<b>14,108</b>	<b>15,070</b>
% Difference	2.7%	3.3%	2.7%	3.3%	7.0%	11.8%	12.0%	13.5%	10.1%	6.8%
<b>Out-of-State</b>	<b>10,810</b>	<b>11,154</b>	<b>11,456</b>	<b>11,836</b>	<b>13,094</b>	<b>14,780</b>	<b>16,888</b>	<b>19,402</b>	<b>21,502</b>	<b>23,134</b>
% Difference	2.7%	3.2%	2.7%	3.3%	10.6%	12.9%	14.3%	14.9%	10.8%	7.6%

Note: % Difference is the percent change from the previous year to the current year.

## MAJOR BUILDINGS ON CAMPUS

BUILDINGS	COMPLETED	LATEST RENOVATION	TOTAL SQ. FEET	CLASSROOMS & LABS	OFFICES	RES HALL BEDS
Academic Computing Center	1939	1986	6,718	2	4	0
Bancroft Building	1909	1985	86,796	17	127	0
Byrnes Auditorium	1939	1969	68,422	1	1	0
Culp Chiller Plant	1969	1995	5,508	0	0	0
Central Energy Facility	1964		15,583	0	0	0
Columbia Seminary Chapel	1936		1,339	-	-	-
Conservatory of Music	1939	1994	35,662	52	8	0
Crawford Health Center	1896	1983	16,038	0	22	0
Dacus Library	1969		90,612	1	7	0
Dinkins Student Center	1966		46,450	0	24	0
Good Building	1950	1991	2,810	0	1	0
Johnson Hall	1920	2004	62,425	11	18	0
Joynes Conference Center	1926	1985	30,077	0	5	0
Kinard Hall	1929	1987	77,156	39	62	0
Lee Wicker Hall	1962	2003	69,382	0	2	290
Life Sciences Building	1999		65,417	14	26	0
McBryde Hall	1894	1990	44,903	0	5	0
McLaurin Hall	1901	1985	53,660	45	59	0
Margaret Nance Hall	1895	1987	59,352	0	8	223
Operations Center	1941	2002	20,832	-	-	-
Owens Hall	2007		27,630	26	0	0
Peabody Gymnasium	1915	1978	53,118	7	20	0
Phelps Hall	1943	1990	90,799	0	1	402
President's Home	1890	1983	9,151	0	0	0
Richardson Hall	1966	2001	87,020	41	1	417
Roddey Apartments	1920	1989	62,118	0	1	96
Rutledge Building	1906	1989	52,289	20	1	0
Sellars	1930	1995	2,020	0	0	0
Shack	1900	2001	5,836	0	0	0
Sims Hall	1961	2001	57,696	30	19	0
Stewart House	1895	1990	8,307	0	8	0
Stone House (968 Eden)	1900	2005	3,990	-	-	-
Sykes House	1900	1979	5,627	0	13	0
Thomson Cafeteria	1964	2000	26,859	0	3	0
Thomson Hall	1964	1988	85,434	0	6	325
Thurmond Building	1939		62,057	14	71	0
Tillman Hall	1894	1989	115,264	2	118	0
West Center	2007		130,000	23	28	0
Winthrop Coliseum	1982	2003	166,441	0	27	0
Winthrop Lodge	1966	1980	35,763	0	2	202
Withers / WTS Building	1892	1996	106,076	20	83	0
Wofford Hall	1967	2001	92,794	0	1	417
<b>Total</b>			<b>2,145,431</b>	<b>365</b>	<b>782</b>	<b>2,372</b>

LAND AREA OF CAMPUS	
Total Area:	433 Acres
Main Campus:	109 Acres

BOOK VALUE OF CAMPUS	
Equipment:	\$5,782,919
Land & Improvement:	\$1,311,020
Buildings:	\$85,150,192
Library Books:	\$8,500,407
Construction in Progress:	\$7,354,752
Equipment Under Capital Lease:	\$168,484
<b>TOTAL:</b>	<b>\$108,267,774</b>

**RESIDENCE HALL OCCUPANCY  
FALL 2006**

RESIDENCE HALL/APARTMENT	CAPACITY	UNDERGRAD		GRADUATE		TOTAL	TOTAL AS % OF CAPACITY
		MEN	WOMEN	MEN	WOMEN		
<b>RESIDENCE HALLS</b>	<b>2,061</b>	<b>502</b>	<b>1,298</b>	<b>3</b>	<b>4</b>	<b>1,807</b>	<b>87.7%</b>
Lee Wicker	286	46	203	2	0	251	87.8%
Margaret Nance	225	0	205	0	1	206	91.6%
Phelps	399	0	350	0	2	352	88.2%
Richardson	411	341	0	0	0	341	83.0%
Thomson*	325	115	173	1	1	290	89.2%
Wofford	415	0	367	0	0	367	88.4%
<b>APARTMENT</b>	<b>546</b>	<b>127</b>	<b>331</b>	<b>5</b>	<b>8</b>	<b>471</b>	<b>86.3%</b>
Courtyard	405	103	291	2	2	398	98.3%
Roddey	141	24	40	3	6	73	51.8%
<b>GRAND TOTAL</b>	<b>2,607</b>	<b>629</b>	<b>1,629</b>	<b>8</b>	<b>12</b>	<b>2,278</b>	<b>87.4%</b>

\* COED CAPACITY FOR  
THOMSON                      Men      Women  
   119      206

**RESIDENCE HALL OCCUPANCY  
FALL 2005**

RESIDENCE HALL/APARTMENT	CAPACITY	UNDERGRAD		GRADUATE		TOTAL	TOTAL AS % OF CAPACITY
		MEN	WOMEN	MEN	WOMEN		
<b>RESIDENCE HALLS</b>	<b>2,061</b>	<b>487</b>	<b>1,189</b>	<b>1</b>	<b>4</b>	<b>1,681</b>	<b>81.6%</b>
Lee Wicker	286	36	200	0	1	237	82.9%
Margaret Nance	225	0	160	0	1	161	71.6%
Phelps	399	0	326	0	1	327	82.0%
Richardson	411	332	0	0	0	332	80.8%
Thomson*	325	119	156	1	1	277	85.2%
Wofford	415	0	347	0	0	347	83.6%
<b>APARTMENT</b>	<b>546</b>	<b>122</b>	<b>339</b>	<b>6</b>	<b>9</b>	<b>476</b>	<b>87.2%</b>
Courtyard	405	91	291	3	5	390	96.3%
Roddey	141	31	48	3	4	86	61.0%
<b>GRAND TOTAL</b>	<b>2,607</b>	<b>609</b>	<b>1,528</b>	<b>7</b>	<b>13</b>	<b>2,157</b>	<b>82.7%</b>

\* COED CAPACITY FOR  
THOMSON                      Men      Women  
   119      206

## WINTHROP UNIVERSITY LIBRARY STATISTICS 2000 - 2006

DESCRIPTION	2000-01	2001-02	2002-03	2003-04	2004-05	2005-06
<b>LIBRARY STAFF</b>	31.00	31.00	31.00	31.00	31.00	31.00
Professional Librarians	14	14	14	14	14	13
Para-Professionals	16.00	16.00	16.00	16.00	16.00	17.00
Clericals	1.00	1.00	1.00	1.00	1.00	1.00
<b>HOLDINGS</b>						
Volumes in Book Stock	422,725	424,681	414,871	419,244	421,505	425,648
Shelving Capacity (Volumes)	400,000	400,000	400,000	400,000	400,000	400,000
U.S. Government Documents	0***	0***	0***	0***	0***	0***
Units of Microtext	1,191,255	1,209,273	1,236,619	1,242,545	1,247,774	1,249,379
Audio Recordings (Discs & Cassettes)	1,634	1,664	1,739	1,739	1,756	1,778
Maps	2,540	2,620	2,675	2,733	2,763	2,824
CD-ROM Titles	231	256	282	294	310	322
Total Bound Periodicals & Serials	72,680	70,523	56,183	70,268	70,268	69,917
Total Current Subscription						
Serial Titles Regularly Received	1,754	1,600	1,446	1,729	1,421	1,545
Archives (Approximate Piece Count)	2,672,159	2,746,777	2,893,465	2,964,747	3,102,566	3,155,716
<b>TOTAL OPERATING EXPENDITURES</b>	\$2,169,201	\$2,174,908	\$2,359,729	\$2,424,034	\$2,683,011	\$2,721,615
<b>STUDENTS</b>						
Student Headcount Enrollment (Fall)	6,062	6,306	6,462	6,558	6,447	6,292
Expenditures per Student	\$358	\$345	\$365	\$370	\$416	\$433
Volumes in Book Stock per Student	70	67	64	64	65	68
Students per Library Staff Member	196	203	208	212	208	203
Students per Librarian	433	450	462	468	461	484

\*\*\* U.S. Government Documents are now included in the total volume count

**WINTHROP UNIVERSITY ACTIVE ALUMNI**  
**By County and State of Residence**  
**As of November 29, 2006**

S.C. COUNTY OF RESIDENCE	NUMBER OF ACTIVE ALUMNI
Abbeville	82
Aiken	436
Allendale	28
Anderson	609
Bamberg	48
Barnwell	83
Beaufort	299
Berkeley	339
Calhoun	63
Charleston	1,531
Cherokee	395
Chester	755
Chesterfield	329
Clarendon	106
Colleton	145
Darlington	326
Dillon	135
Dorchester	370
Edgefield	98
Fairfield	157
Florence	718
Georgetown	305
Greenville	2,240
Greenwood	287
Hampton	78
Horry	613
Jasper	21
Kershaw	403
Lancaster	917
Laurens	315
Lee	66
Lexington	1,349
Marion	124
Marlboro	124
McCormick	29
Newberry	221
Oconee	262
Orangeburg	374
Pickens	497
Richland	1,850
Saluda	54
Spartanburg	1,325
Sumter	440
Union	251
Williamsburg	110
York	7,305
<b>TOTAL</b>	<b>26,612</b>

STATE OF RESIDENCE	NUMBER OF ACTIVE ALUMNI
Alabama	192
Alaska	11
Arizona	65
Arkansas	25
California	275
Colorado	92
Connecticut	54
Delaware	38
District of Columbia	32
Florida	931
Georgia	1,593
Hawaii	15
Idaho	7
Illinois	113
Indiana	59
Iowa	26
Kansas	26
Kentucky	88
Louisiana	62
Maine	20
Maryland	324
Massachusetts	61
Michigan	82
Minnesota	33
Mississippi	48
Missouri	64
Montana	12
Nebraska	16
Nevada	17
New Hampshire	15
New Jersey	137
New Mexico	23
New York	221
North Carolina	5,890
North Dakota	4
Ohio	192
Oklahoma	30
Oregon	32
Pennsylvania	176
Rhode Island	15
South Carolina	26,612
South Dakota	4
Tennessee	382
Texas	327
Utah	8
Vermont	10
Virginia	760
Washington	59
West Virginia	36
Wisconsin	43
Wyoming	4
Other (Military Addresses)	17
Puerto Rico	3
Virgin Islands	5
<b>TOTAL</b>	<b>39,386</b>