

WINTHROP UNIVERSITY MISSION STATEMENT

Winthrop University provides personalized and challenging undergraduate, graduate, and continuing professional education programs of national caliber within a context dedicated to public service to the State of South Carolina. All eligible bachelor's, master's and specialist degrees in the liberal arts and sciences, education, business and the visual and performing arts are nationally accredited – part of the University's commitment to be among the very best institutions of its kind in the nation.

Building on its origins as a women's college, the Winthrop University of the 21st century is achieving national recognition as a competitive and distinctive, co-educational, public, residential comprehensive teaching institution.

Winthrop enrolls an achievement-oriented, culturally diverse and socially responsible student body of 6,000 students and will remain a medium-sized comprehensive teaching university for the foreseeable future. The University recruits South Carolina's best students as well as highly qualified students from beyond the state whose presence adds diversity and enrichment to the campus and state. Winthrop prides itself on being an institution of choice for groups traditionally under-represented on the college campus.

Winthrop's historic campus, located in a dynamic city within a major metropolitan area, provides a contemporary and supportive environment that promotes student learning and development. Winthrop has a diverse and able faculty and professional staff of national caliber and supports their work as effective teachers, scholars, researchers, practitioners, and creative artists. Through this talented group, Winthrop students acquire and develop knowledge, skills, and values that enrich their lives and prepare them to meet the needs and challenges of the contemporary world, including the ability to communicate effectively, appreciate diversity, work collaboratively, synthesize knowledge, and adapt to change. Ongoing assessment of programs and services ensures both that all academic programs challenge students at their highest level of ability and that the library, instructional technology and other academic service areas support courses of study that are consonant with current methods and knowledge. As a result, Winthrop graduates are eminently well prepared to assume successful careers in business, industry, government, education, the arts, and human services, as well as to enter the most competitive graduate or professional schools.

(Adopted by the Winthrop University Board of Trustees - 6/12/98)
(Update Adopted by the Winthrop University Board of Trustees - 11/3/00)

WINTHROP UNIVERSITY

ORGANIZATIONAL CHART 2005 - 2006

Board
of Trustees

Office of the
President

Internal
Audit

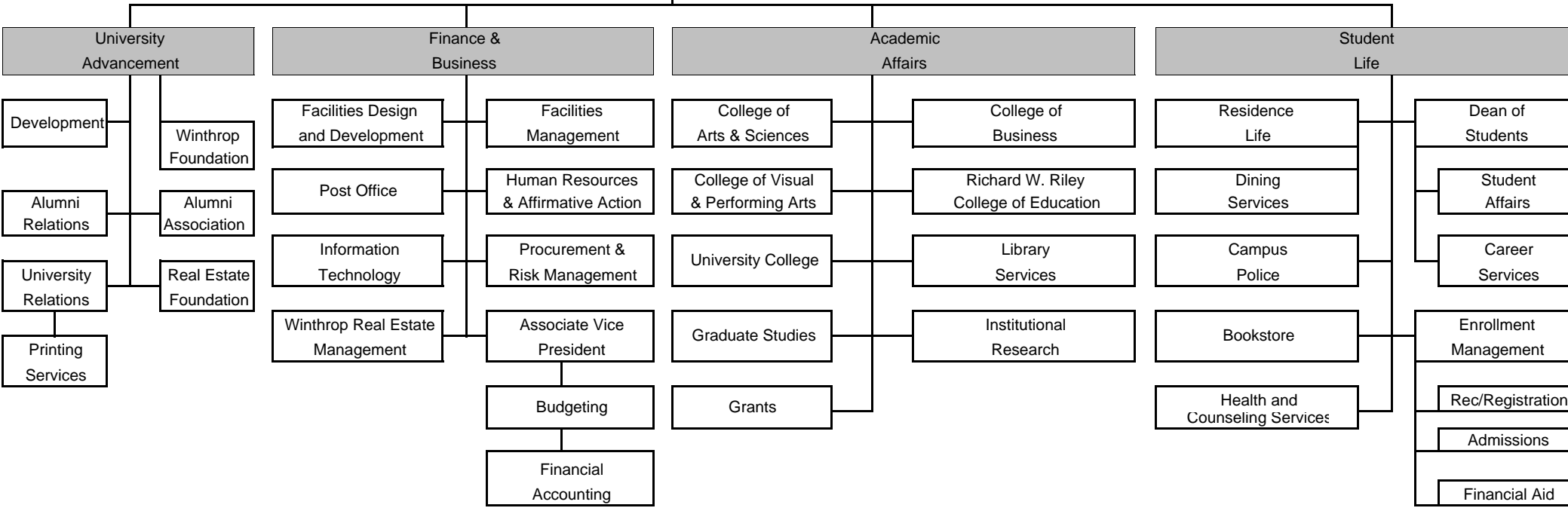
Executive
Assistant

Public
Affairs

University
Events

Public
Events

Intercollegiate
Athletics



FIRST-TIME FRESHMEN ENROLLMENT BY MAJOR FALL 2001 - FALL 2005

COLLEGE / DEGREE PROGRAMS	2001	2002	2003	2004	2005	04 TO 05 % DIFF.
ARTS & SCIENCES	358	369	376	368	360	-2.2%
Biology	93	114	108	116	94	-19.0%
Chemistry	4	12	8	13	25	92.3%
English	31	24	27	25	30	20.0%
Environmental Science	2	2	5	1	1	0.0%
Environmental Studies	*	*	*	4	2	-50.0%
General Communication Disorders	4	13	8	4	6	50.0%
History	13	18	18	20	24	20.0%
Human Nutrition	7	9	7	10	8	-20.0%
Integrated Marketing Communication	17	2	9	19	11	-42.1%
Mass Communication	56	57	59	45	37	-17.8%
Mathematics (B.A.)	3	12	5	11	18	63.6%
Mathematics (B.S.)	10	9	6	5	0	-100.0%
Medical Technology	0	0	0	0	0	0.0%
Modern Languages	9	5	3	7	4	-42.9%
Philosophy & Religious Studies	1	5	3	0	4	100.0%
Political Science	31	35	35	24	27	12.5%
Psychology	60	38	56	46	57	23.9%
Science Communications	0	0	0	0	0	0.0%
Social Work	6	7	6	7	2	-71.4%
Sociology	11	7	13	11	10	-9.1%
BUSINESS ADMINISTRATION	199	212	188	182	184	1.1%
Business Administration	131	159	140	124	133	7.3%
Computer Science	33	29	31	20	15	-25.0%
Integrated Marketing Communication	17	2	9	19	11	-42.1%
Sport Management	18	22	8	19	25	31.6%
EDUCATION	166	210	192	189	184	-2.6%
Early Childhood Education	41	62	61	70	61	-12.9%
Elementary Education	82	90	86	64	62	-3.1%
Family & Consumer Science	0	3	0	0	1	100.0%
Physical Education	9	18	26	27	29	7.4%
Special Education	16	15	11	9	6	-33.3%
Sport Management	18	22	8	19	25	31.6%
VISUAL & PERFORMING ARTS	151	188	175	171	198	15.8%
Art (B.A.)	37	17	10	13	103	692.3%
Art (B.F.A.)	47	93	80	79	0	-100.0%
Art History (B.A.)	1	1	1	1	1	0.0%
Dance	14	21	26	12	16	33.3%
Music (B.A.)	5	2	9	7	13	85.7%
Music Education (Choral)	8	7	9	11	12	9.1%
Music Education (Instrumental)	7	13	7	22	18	-18.2%
Music (Performance)	11	8	14	12	13	8.3%
Theatre	21	26	19	14	22	57.1%
PRE-MAJOR	107	131	157	129	122	-5.4%

FIRST-TIME FRESHMEN CLASS PROFILE FALL 2006

GENDER	Winthrop	
	#	Percent
Male	319	27.0%
Female	864	73.0%
Total	1183	100.0%

RACE	Winthrop			
	Male	Female	Total	Percent
International	1	6	7	0.6%
Black (Non-Hispanic)	75	246	321	27.1%
Native American	1	4	5	0.4%
Asian / Pacific Islander	2	15	17	1.4%
Hispanic	5	24	29	2.5%
White (Non-Hispanic)	235	569	804	68.0%
Unknown	0	0	0	0.0%
Total	319	864	1183	100.0%

HIGH SCHOOL CLASS RANK	Winthrop		
	#	Percent	Cum. %
Top Tenth	205	21.6%	21.6%
Second Tenth	229	24.2%	45.8%
Top Quarter	529	55.8%	55.8%
Third Tenth	190	20.0%	65.8%
Fourth Tenth	138	14.6%	80.4%
Fifth Tenth	105	11.1%	91.5%
Bottom 50%	81	8.5%	100.0%
Subtotal	948	100%	
Unknown/unranked	60	6.0%	
Total	1008		

AVERAGE ACT/SAT SCORE	#	Score
SAT	772	1080
SAT Math	772	540
SAT Verb	772	539
ACT	242	22
No Score	169	-

AVERAGE HIGH SCHOOL GPA	#	GPA
	1000	3.64

SCHOOL BACKGROUND	Winthrop	
	#	Percent
S.C. High School	829	81.5%
Out-of-State H.S./GED	169	16.6%
Foreign H.S./GED	14	1.4%
S.C. GED	0	0.0%
Home School	5	0.5%
Unknown High School	0	0.0%
Total	1017	100.0%

ENROLLMENT STATUS	Winthrop			
	Male	Female	Total	Percent
Full-Time	297	718	1015	99.8%
Part-Time	1	1	2	0.2%
Total	298	719	1017	100.0%

RESIDENCY	Winthrop			
	Male	Female	Total	Percent
South Carolina Residents	246	598	844	83.0%
Non-S.C. Residents	52	121	173	17.0%
Total	298	719	1017	100.0%

UNIVERSITY HOUSING	Winthrop Freshmen			
	Male	Female	Total	Percent
University Residences	261	644	905	89.0%
Off Campus	37	75	112	11.0%
Total	298	719	1017	100.0%

ENROLLMENT BY COLLEGE	Winthrop Freshmen			
	Male	Female	Total	Percent
Arts & Sciences	91	270	361	35.5%
Business	93	80	173	17.0%
Education	29	167	196	19.3%
Visual & Perf. Arts	40	125	165	16.2%
Pre-Major	45	77	122	12.0%
Total	298	719	1017	100.0%

**FIRST-TIME FRESHMEN CLASS PROFILE
FALL 2001 - FALL 2005**

ENROLLMENT STATUS	2001		2002		2003		2004		2005	
	#	Percent	#	Percent	#	Percent	#	Percent	#	Percent
Full-Time	940	99.4%	1086	100.0%	1070	99.6%	999	99.8%	1015	99.8%
Part-Time	6	0.6%	0	0.0%	4	0.4%	2	0.2%	2	0.2%
Total	946	100.0%	1086	100.0%	1074	100.0%	1001	100.0%	1017	100.0%

GENDER	2001		2002		2003		2004		2005	
	#	Percent	#	Percent	#	Percent	#	Percent	#	Percent
Male	265	28.0%	308	28.4%	295	27.5%	273	27.3%	298	29.3%
Female	681	72.0%	778	71.6%	779	72.5%	728	72.7%	719	70.7%
Total	946	100.0%	1086	100.0%	1074	100.0%	1001	100.0%	1017	100.0%

RACE	2001		2002		2003		2004		2005	
	#	Percent	#	Percent	#	Percent	#	Percent	#	Percent
International	11	1.2%	12	1.1%	16	1.5%	16	1.6%	21	2.1%
Black (Non-Hispanic)	250	26.4%	276	25.4%	265	24.7%	281	28.1%	259	25.5%
Native American	1	0.1%	2	0.2%	5	0.5%	5	0.5%	2	0.2%
Asian / Pacific Islander	7	0.7%	10	0.9%	7	0.7%	11	1.1%	17	1.7%
Hispanic	9	1.0%	14	1.3%	14	1.3%	14	1.4%	12	1.2%
White (Non-Hispanic)	665	70.3%	764	70.3%	767	71.4%	674	67.3%	706	69.4%
Unknown	3	0.3%	8	0.7%	0	0.0%	0	0.0%	0	0.0%
Total	946	100.0%	1086	100.0%	1074	100.0%	1001	100.0%	1017	100.0%

RESIDENCY	2001		2002		2003		2004		2005	
	#	Percent	#	Percent	#	Percent	#	Percent	#	Percent
South Carolina Residents	819	86.6%	923	85.0%	891	83.0%	879	87.8%	844	83.0%
Non-S.C. Residents	127	13.4%	163	15.0%	183	17.0%	122	12.2%	173	17.0%
Total	946	100.0%	1086	100.0%	1074	100.0%	1001	100.0%	1017	100.0%

Note: SC figures refer to first-time freshmen at all S.C. Public 4-Year Institutions.

FIRST-TIME ENTERING FRESHMEN FALL 1996 - FALL 2005

	1996*	1997*	1998*	1999*	2000*	2001*	2002*	2003*	2004*	2005*	04 to 05	
											% Diff	Diff
Total 1st-Time Freshmen	819	912	836	971	907	946	1086	1074	1001	1017	1.6%	16
Winthrop's Average SAT and ACT including provisionals, internationals, and age 22 & older												
COMBINED SAT	1051	1039	1043	1042	1056	1055	1055	1069	1068	1080	1.1%	12
Verb	530	528	526	525	532	530	526	535	536	539	0.6%	3
Math	521	511	517	517	524	525	529	534	532	540	1.5%	8
# students w/ SAT	721	803	742	822	763	756	838	819	809	772	-4.6%	-37
% 1st-Time Freshmen	88.0%	88.0%	88.8%	84.7%	84.1%	79.9%	77.2%	76.3%	80.8%	75.9%	-6.1%	0
ACT	22	20	21	23	22	22	22	22	21	22	4.8%	1
# students w/ ACT	81	105	84	138	135	178	243	251	190	242	27.4%	52
% 1st-Time Freshmen	9.9%	11.5%	10.0%	14.2%	14.9%	18.8%	22.4%	23.4%	19.0%	23.8%	25.4%	0
# with no SAT or ACT Score	17	4	10	11	9	12	5	4	2	3	50.0%	1
	2.1%	0.4%	1.2%	1.1%	1.0%	1.3%	0.5%	0.4%	0.2%	0.3%	47.6%	0
State Average SAT	954	953	951	954	966	974	981	989	986	993	0.7%	7
National Average SAT	1013	1016	1017	1016	1019	1020	1020	1026	1026	1028	0.2%	2

* The use of SAT or ACT scores for admission to Winthrop for all new freshmen is based on the highest score of the two tests.

Note: State and National averages obtained from College Board. In 1996 the College Board recentered the SAT. The scores in the 1996-04 columns should not be compared with figures from previous years.

**SOUTH CAROLINA HIGH SCHOOLS
WHICH CONTRIBUTED TEN OR MORE STUDENTS
TO WINTHROP'S FRESHMAN CLASS IN ONE YEAR
FALL 2001 - FALL 2005**

S.C. High School of Graduation	Enrolled Fall 01	Enrolled Fall 02	Enrolled Fall 03	Enrolled Fall 04	Enrolled Fall 05	5 Year Total
Beaufort	0	0	0	0	7	7
Camden	11	6	4	3	9	33
Chapin	12	7	7	4	6	36
Charleston County School of Arts	1	3	10	1	11	26
Cheraw	2	12	8	1	2	25
Chester	0	0	0	0	5	5
Clover	15	11	15	14	25	80
Colleton County	0	0	5	11	3	19
Columbia	6	6	5	10	3	30
Conway	0	0	0	0	2	2
Crestwood	3	6	10	8	3	30
Dreher	6	8	6	16	2	38
Dutch Fork	15	19	19	13	12	78
Eastside	7	6	5	12	11	41
Fort Dorchester	7	13	15	4	10	49
Fort Mill	22	26	15	30	34	127
Gaffney	8	4	5	13	3	33
Greenwood	0	0	0	0	7	7
Hartsville	11	5	2	6	3	27
Hillcrest	10	16	13	14	5	58
Hilton Head	10	2	5	6	10	33
Irmo	17	32	14	16	14	93
James L. Mann	11	8	7	7	1	34
Lancaster	7	5	3	11	14	40
Laurens	8	8	7	4	7	34
Lexington	32	17	19	15	8	91
Lower Richland	6	2	8	11	5	32
Lugoff-Elgin	2	6	10	1	11	30
Mauldin	8	12	10	8	4	42
Middleton	12	11	0	0	0	23
North Augusta	0	0	0	0	4	4
Northwestern	25	34	28	32	38	157
Orangeburg-Wilkinson	6	4	4	8	1	23
Paul M. Dorman	16	13	16	13	8	66
Richland Northeast	6	7	9	11	9	42
Ridgeview	12	7	17	20	16	72
Riverside	13	5	9	1	5	33
Rock Hill	18	32	22	48	33	153
Socastee	6	2	11	5	7	31
South Aiken	10	6	8	6	2	32
South Florence	6	11	8	10	1	36
Spartanburg	0	0	0	0	4	4
Spring Valley	13	12	11	17	15	68
Stratford	9	12	14	15	15	65
Summerville	16	17	29	9	15	86
Sumter	19	6	13	12	14	64
W.J. Keenan	10	9	3	5	7	34
Wade Hampton	5	2	6	6	4	23
Wando	12	21	29	19	22	103
West Ashley	0	0	11	10	13	34
West Florence	8	11	2	6	3	30
York Comprehensive	16	14	12	14	12	68

**HEADCOUNT ENROLLMENT OF TRANSFERS
BY S.C. INSTITUTION OF PREVIOUS ENROLLMENT
FALL 2001 - FALL 2005**

FIGE	TECHNICAL COLLEGES	Enrolled Fall 01	Enrolled Fall 02	Enrolled Fall 03	Enrolled Fall 04	Enrolled Fall 05	5 Year % of Total
003996	York	68	86	60	77	94	56.2%
003993	Midlands	19	12	13	19	16	11.5%
003991	Greenville	19	15	8	16	10	9.9%
004920	Trident - Palmer	8	3	17	8	15	7.4%
003992	Piedmont	1	3	4	5	2	2.2%
004926	Tri-County	4	0	2	3	2	1.6%
007602	Chesterfield-Marlboro	5	2	0	1	2	1.5%
003994	Spartanburg	1	2	4	4	7	2.6%
004925	Horry-Georgetown	3	0	1	4	3	1.6%
003995	Central Carolina	1	3	2	4	1	1.6%
003990	Florence-Darlington	2	2	2	0	3	1.3%
006815	Orangeburg-Calhoun	0	2	2	1	2	1.0%
009910	Tech. College of Low Country	1	0	0	3	0	0.6%
010056	Aiken	0	0	1	1	0	0.3%
009932	Williamsburg	0	1	0	1	0	0.3%
004922	South University	0	0	0	1	0	0.1%
005363	Denmark	0	1	0	0	0	0.1%
	Subtotal	132	132	116	148	157	100.0%

FIGE	PUBLIC SR COLLEGE & UNIV	Enrolled Fall 01	Enrolled Fall 02	Enrolled Fall 03	Enrolled Fall 04	Enrolled Fall 05	5 Year % of Total
003453	USC-Lancaster	12	17	17	8	10	9.3%
003448	USC-Columbia	12	7	17	12	13	8.9%
003428	College of Charleston	1	4	4	10	7	3.8%
003435	Lander	8	5	5	2	3	3.4%
003451	Coastal Carolina	5	3	6	4	7	3.6%
009226	Francis Marion	5	2	5	3	6	3.1%
003425	Clemson	2	3	2	6	6	2.8%
006951	USC-Upstate	5	2	3	4	9	3.4%
003446	S.C. State	6	3	5	2	6	3.2%
012112	USC-Sumter	2	2	3	1	4	1.8%
003449	USC-Aiken	3	4	2	1	2	1.8%
004927	USC-Union	2	0	2	3	1	1.2%
003454	USC-Salkehatchie	4	0	0	0	1	0.7%
003450	USC-Beaufort	1	0	3	1	1	0.9%
003423	The Citadel	0	0	1	0	0	0.1%
003438	Medical University of S.C.	0	0	0	0	0	0.0%
	Subtotal	68	52	75	57	76	100.0%

**HEADCOUNT ENROLLMENT OF TRANSFERS
BY S.C. INSTITUTION OF PREVIOUS ENROLLMENT
FALL 2001 - FALL 2005**

FIGE	PRIVATE SR COLLEGES & UNIV	Enrolled Fall 01	Enrolled Fall 02	Enrolled Fall 03	Enrolled Fall 04	Enrolled Fall 05	5 Year % of Total
003447	Spartanburg Methodist	6	7	6	14	9	6.1%
003419	Charleston Southern (Baptist)	5	0	2	6	3	2.3%
003441	North Greenville	3	4	2	1	1	1.6%
003430	Columbia	1	2	1	1	1	0.9%
003440	Newberry	2	1	4	2	0	1.3%
003427	Coker	2	1	3	4	1	1.6%
003420	Benedict	3	2	1	2	1	1.3%
003424	Clafin	1	1	0	3	4	1.3%
003418	Anderson	1	1	2	1	3	1.2%
003436	Limestone	4	0	1	0	3	1.2%
003439	Morris	1	1	2	0	0	0.6%
003434	Furman	0	2	0	1	0	0.4%
003457	Wofford	2	1	0	1	0	0.6%
003432	Erskine	1	0	1	3	1	0.9%
003431	Converse	1	0	0	0	0	0.1%
003445	Presbyterian	0	0	0	1	0	0.1%
003455	Voorhees	0	0	0	1	0	0.1%
003417	Allen	0	1	0	0	2	0.4%
903404	Johnson and Wales	1	0	0	0	1	0.3%
003422	Central Wesleyan	0	0	0	1	1	0.3%
003429	Columbia International University	0	0	0	1	1	0.3%
003421	Bob Jones	0	0	0	0	0	0.0%
	Subtotal	34	24	25	43	32	100.0%

SUMMARY	Enrolled Fall 01	Enrolled Fall 02	Enrolled Fall 03	Enrolled Fall 04	Enrolled Fall 05	5 Year % of Total
Technical Colleges	132	134	116	148	157	39.7%
Public Sr Colleges & Univ.	68	52	75	57	76	19.0%
Private Sr Colleges & Univ.	34	24	25	43	32	9.1%
Out-of-State	127	127	92	116	94	32.2%
Total	361	337	308	364	359	100.0%

**HEADCOUNT ENROLLMENT
OF FIRST-YEAR GRADUATE STUDENTS AT WINTHROP
BY S.C. INSTITUTIONS OF PREVIOUS ENROLLMENT
Fall 2001- Fall 2005**

FICE	PUBLIC SR COLLEGE & UNIV	Enrolled Fall 01	Enrolled Fall 02	Enrolled Fall 03	Enrolled Fall 04	Enrolled Fall 05	5 Year % SC Public	5 Year % of Total
003425	Clemson	6	10	5	5	42	10.9%	6.0%
003451	Coastal Carolina	3	10	4	9	4	4.8%	2.6%
003428	College of Charleston	0	4	4	5	9	3.5%	1.9%
009226	Francis Marion	2	3	0	0	10	2.4%	1.3%
003435	Lander	0	2	1	2	56	9.7%	5.4%
003438	Medical University of S.C.	0	1	0	0	0	0.2%	0.1%
003446	S.C. State	7	2	2	2	9	3.5%	1.9%
003423	The Citadel	0	0	1	0	4	0.8%	0.4%
003449	USC-Aiken	0	2	0	1	12	2.4%	1.3%
003448	USC-Columbia	9	13	19	13	56	17.6%	9.7%
003453	USC-Lancaster	0	0	1	1	1	0.5%	0.3%
006951	USC-Upstate	0	1	1	3	3	1.3%	0.7%
003456	Winthrop	57	56	55	49	49	42.5%	23.4%
	Subtotal	84	104	93	90	255	100.0%	55.2%

FICE	PRIVATE SR COLLEGE & UNIV	Enrolled Fall 01	Enrolled Fall 02	Enrolled Fall 03	Enrolled Fall 04	Enrolled Fall 05	5 Year % SC Private	5 Year % of Total
003418	Anderson College	1	0	0	0	10	10.7%	1.0%
003420	Benedict	0	0	0	0	1	1.0%	0.1%
003421	Bob Jones	1	0	0	0	0	1.0%	0.1%
003419	Charleston Southern	0	0	1	1	4	5.8%	0.5%
003424	Clafflin	1	0	1	0	4	5.8%	0.5%
003427	Coker	0	0	0	0	13	12.6%	1.1%
003429	Columbia International University	0	0	0	0	3	2.9%	0.0%
003430	Columbia	4	1	0	1	11	16.5%	1.5%
003431	Converse	0	1	0	0	6	6.8%	0.6%
003432	Erskine	1	0	0	0	8	8.7%	0.8%
003434	Furman	3	4	3	1	0	10.7%	1.0%
003436	Limestone	2	2	0	1	0	4.9%	0.4%
003439	Morris	0	0	1	0	0	1.0%	0.1%
003440	Newberry	0	0	1	0	0	1.0%	0.1%
003441	North Greenville	0	0	0	1	0	1.0%	0.1%
003445	Presbyterian	1	0	1	0	0	1.9%	0.2%
003422	Southern Wesleyan	0	0	0	0	4	3.9%	0.4%
003455	Vorhees	0	1	0	0	0	1.0%	0.1%
003457	Wofford	2	0	0	1	0	2.9%	0.3%
	Subtotal	16	9	8	6	64	100.0%	8.8%

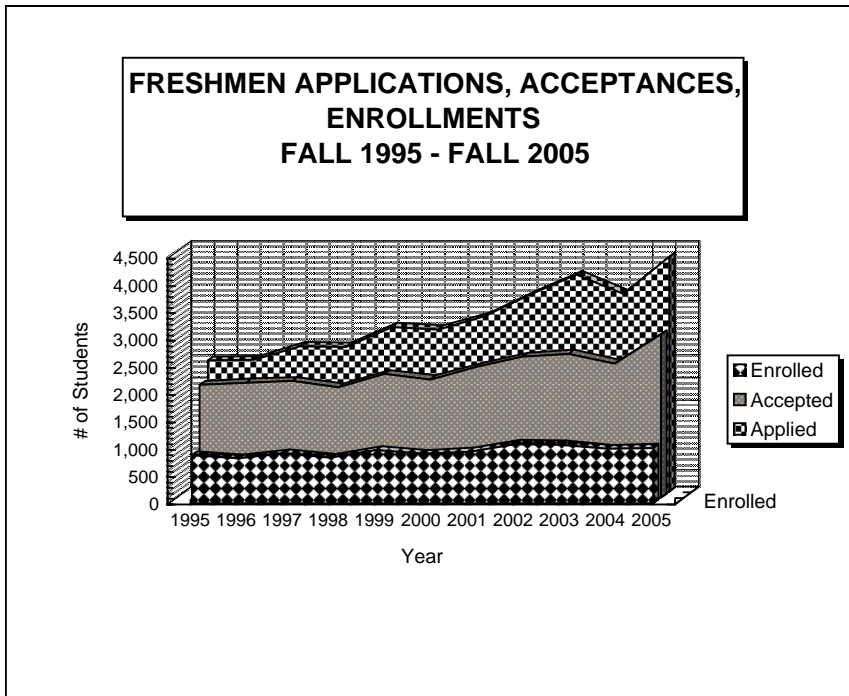
SUMMARY

SUMMARY	Enrolled Fall 01	Enrolled Fall 02	Enrolled Fall 03	Enrolled Fall 04	Enrolled Fall 05	5 Year % of Total
Public Senior Colleges & Univ.	84	104	93	90	255	55.2%
Private Senior Colleges & Univ.	16	9	8	6	64	9.1%
Out-of-State	72	74	72	94	94	35.8%
Total	172	187	173	190	413	100.0%

NOTE: Only students classified as fully-admitted, degree-seeking students are counted.

FRESHMEN APPLICATIONS, ACCEPTANCES, ENROLLMENTS FALL 1995 - FALL 2005

YEAR	1995	1996	1997	1998	1999	2000	2001	2002	2003	2004	2005
Applications	2,403	2,406	2,662	2,651	3,014	2,969	3,207	3,604	3,972	3,617	4,303
Acceptances	2,064	2,104	2,130	2,019	2,261	2,163	2,389	2,579	2,632	2,452	2,985
Acceptances as % of Applied	85.9%	87.4%	80.0%	76.2%	75.0%	72.9%	74.5%	71.6%	66.3%	67.8%	69.4%
Enrolled	878	819	912	836	971	907	946	1,086	1,074	1,001	1,017
Enrolled as % of Accepted	42.5%	38.9%	42.8%	41.4%	42.9%	41.9%	39.6%	42.1%	40.8%	40.8%	34.1%



**HEADCOUNT ENROLLMENT
BY GENDER, LEVEL & FULL/PART TIME
FALL 2005**

LEVEL	2005		
	Male	Female	Total
Full-Time Undergraduate	1,429	3,158	4,587
Part-Time Undergraduate	169	431	600
Subtotal	1,598	3,589	5,187
Full-Time Graduate	118	210	328
Part-Time Graduate	235	730	965
Subtotal	353	940	1,293
Grand Total	1,951	4,529	6,480

**HEADCOUNT ENROLLMENT
BY GENDER & LEVEL
FALL 1996 - FALL 2005**

LEVEL	1996		1997		1998		1999		2000	
	Male	Female	Male	Female	Male	Female	Male	Female	Male	Female
Undergraduate	1,337	2,845	1,346	2,948	1,342	2,998	1,380	3,231	1,425	3,225
Graduate	347	873	351	929	317	934	306	923	351	1,061
Total	1,684	3,718	1,697	3,877	1,659	3,932	1,686	4,154	1,776	4,286
Percent	31.2%	68.8%	30.4%	69.6%	29.7%	70.3%	28.9%	71.1%	29.3%	70.7%

LEVEL	2001		2002		2003		2004		2005	
	Male	Female	Male	Female	Male	Female	Male	Female	Male	Female
Undergraduate	1,485	3,353	1,529	3,527	1,558	3,603	1,588	3,625	1,598	3,589
Graduate	370	1,098	349	1,057	362	1,035	333	901	353	940
Total	1,855	4,451	1,878	4,584	1,920	4,638	1,921	4,526	1,951	4,529
Percent	29.4%	70.6%	29.1%	70.9%	29.3%	70.7%	29.8%	70.2%	30.1%	69.9%

HEADCOUNT ENROLLMENT BY CLASS & SEMESTER

FALL

LEVEL / CLASS	1996	1997	1998	1999	2000	2001	2002	2003	2004	2005	2006
Undergraduate	4,182	4,294	4,340	4,611	4,650	4,838	5,056	5,161	5,213	5,187	5,111
New Freshmen	819	912	836	971	905	946	1,073	1,074	1,001	1,019	1,183
Other Freshman	152	146	142	162	199	172	156	128	156	118	119
Sophomore	1,043	1,028	1,121	1,099	1,146	1,105	1,112	1,239	1,210	1,107	1,115
Junior	901	918	910	974	1,039	1,157	1,186	1,143	1,254	1,227	1,070
Senior	999	993	1,025	1,096	1,097	1,164	1,299	1,345	1,336	1,422	1,400
UG Special	268	297	306	309	264	294	230	232	256	294	224
Graduate	1,220	1,280	1,251	1,229	1,412	1,468	1,406	1,397	1,234	1,293	1,181
Total	5,402	5,574	5,591	5,840	6,062	6,306	6,462	6,558	6,447	6,480	6,292

SPRING

LEVEL / CLASS	1996	1997	1998	1999	2000	2001	2002	2003	2004	2005	2006
Undergraduate	3,798	3,748	3,885	3,984	4,182	4,337	4,513	4,749	4,861	4,811	4,704
Freshman	772	752	813	754	848	831	897	1,044	1,005	915	901
Sophomore	874	926	954	1,010	960	1,012	953	986	1,060	1,066	973
Junior	913	887	929	926	1,043	1,056	1,125	1,108	1,141	1,177	1,166
Senior	1,051	1,067	1,042	1,111	1,091	1,180	1,280	1,386	1,422	1,407	1,453
UG Special	188	116	147	183	240	258	258	225	233	246	211
Graduate	1,402	1,121	1,002	957	947	937	936	1,033	929	996	891
Total	5,200	4,869	4,887	4,941	5,129	5,274	5,449	5,782	5,790	5,807	5,595

SUMMER

LEVEL / CLASS	1995	1996	1997	1998	1999	2000	2001	2002	2003	2004	2005
Undergraduate	1,108	1,103	1,064	1,049	1,142	1,176	1,267	1,297	1,309	1,237	1,091
Freshman	24	21	31	23	32	22	29	33	40	40	25
Sophomore	159	138	152	156	175	167	170	183	243	185	183
Junior	264	267	275	282	325	338	385	382	321	341	268
Senior	564	570	528	511	528	580	607	643	640	605	568
UG Special	97	107	78	77	82	69	76	56	65	66	47
Graduate	1,302	1,304	1,125	1,352	1,087	1,006	1,011	1,043	1,186	1,093	864
Total	2,410	2,407	2,189	2,401	2,229	2,182	2,278	2,340	2,495	2,330	1,955

**FULL-TIME/PART-TIME HEADCOUNT
ENROLLMENT AND CREDIT HOUR PRODUCTION
FALL 1996 - FALL 2006**

LEVEL	1997		1998		1999		2000		2001	
	HC	CHP	HC	CHP	HC	CHP	HC	CHP	HC	CHP
Undergraduate	4,294	58,518	4,340	59,049	4,611	62,943	4,650	64,354	4,838	67,034
Full-Time	3,653	55,241	3,660	55,698	3,940	59,566	4,032	61,159	4,201	63,831
Part-Time	641	3,277	680	3,351	671	3,377	618	3,195	637	3,203
Graduate	1,280	6,524	1,251	6,187	1,229	6,112	1,412	7,644	1,468	6,915
Full-Time	267	2,843	251	2,636	281	2,870	289	2,978	270	2,783
Part-Time	1,013	3,681	1,000	3,551	948	3,242	1,123	4,666	1,198	4,132

LEVEL	2002		2003		2004		2005		2006	
	HC	CHP	HC	CHP	HC	CHP	HC	CHP	HC	CHP
Undergraduate	5,056	71,006	5,161	73,086	5,213	73,807	5,187	73,547	5,111	
Full-Time	4,448	67,722	4,597	70,120	4,617	70,650	4,587	70,507	4,621	
Part-Time	608	3,284	564	2,966	596	3,157	600	3,040	490	
Graduate	1,406	6,891	1,397	7,207	1,234	6,701	1,293	6,793	1,181	
Full-Time	303	3,003	328	3,309	327	3,267	328	3,268	312	
Part-Time	1,103	3,888	1,069	3,898	907	3,434	965	3,525	869	

Note: Headcount and CHP by classification of student.

**RESIDENCE HALL ENROLLMENT
COMPARED TO HEADCOUNT ENROLLMENT
BY CLASS
Fall 2006**

CLASS LEVEL	MALE RESIDENTS	FEMALE RESIDENTS	TOTAL RESIDENTS	HEADCOUNT ENROLLMENT	% RESIDENTS/ HEADCOUNT
Undergraduates	609	1,528	2,157	5,187	41.6%
New Freshmen	227	796	1,023	1,183	86.5%
Other Freshmen	21	32	53	119	44.5%
Sophomore	176	451	627	1,115	56.2%
Junior	82	192	274	1,070	25.6%
Senior	70	154	224	1,400	16.0%
Specials	2	4	6	224	2.7%
Graduates	8	12	20	1,181	1.7%
Grand Total	617	1,540	2,177	6,368	34.2%

FALL 2005

CLASS LEVEL	MALE RESIDENTS	FEMALE RESIDENTS	TOTAL RESIDENTS	HEADCOUNT ENROLLMENT	% RESIDENTS/ HEADCOUNT
Undergraduates	609	1,528	2,157	5,187	41.6%
New Freshmen	257	638	895	1,007	88.9%
Other Freshmen	17	39	56	130	43.1%
Sophomore	160	407	567	1,107	51.2%
Junior	88	251	339	1,227	27.6%
Senior	83	189	272	1,422	19.1%
Specials	4	4	8	294	2.7%
Graduates	7	13	20	1,293	1.5%
Grand Total	616	1,541	2,177	6,480	33.6%

FALL 2004

CLASS LEVEL	MALE RESIDENTS	FEMALE RESIDENTS	TOTAL RESIDENTS	HEADCOUNT ENROLLMENT	% RESIDENTS/ HEADCOUNT
Undergraduates	603	1,626	2,229	5,213	42.8%
New Freshmen	229	624	853	996	85.6%
Other Freshmen	22	44	66	161	41.0%
Sophomore	154	461	615	1,210	50.8%
Junior	130	288	418	1,254	33.3%
Senior	65	201	266	1,336	19.9%
Specials	3	8	11	256	4.3%
Graduates	6	15	21	1,234	1.7%
Grand Total	609	1,641	2,250	6,447	34.9%

**UNDERGRADUATE
RESIDENCE/NON-RESIDENCE HALL ENROLLMENT
FALL 1996 - FALL 2006**

RESIDENCY	1996	1997	1998	1999	2000	2001	2002	2003	2004	2005	2005
Residence Hall	1,961	2,054	2,035	2,159	2,152	2,236	2,303	2,466	2,229	2,157	2,250
% of Total	46.9%	47.8%	46.9%	46.8%	46.3%	46.2%	45.5%	47.8%	42.8%	41.6%	34.9%
Non-Residence Hall	2,221	2,240	2,305	2,452	2,498	2,602	2,753	2,695	2,984	3,030	4,197
% of Total	53.1%	52.2%	53.1%	53.2%	53.7%	53.8%	54.5%	52.2%	57.2%	58.4%	65.1%
Total UG Enrollment	4,182	4,294	4,340	4,611	4,650	4,838	5,056	5,161	5,213	5,187	6,447

**HEADCOUNT ENROLLMENT
BY STATE OF ORIGIN
FALL 1995 - FALL 2006**

YEAR	S.C. RESIDENTS						OUT-OF-STATE RESIDENTS						TOTAL STUDENTS					
	UG		GRAD		TOTAL		UG		GRAD		TOTAL		UG		GRAD		TOTAL	
	#	%	#	%	#	%	#	%	#	%	#	%	#	%	#	%	#	%
1995	3,499	80.7%	836	19.3%	4,335	81.7%	634	65.2%	339	34.8%	973	18.3%	4,133	77.9%	1,175	22.1%	5,308	100%
1996	3,549	80.0%	885	20.0%	4,434	82.1%	633	65.4%	335	34.6%	968	17.9%	4,182	77.4%	1,220	22.6%	5,402	100%
1997	3,643	78.8%	978	21.2%	4,621	82.9%	651	68.3%	302	31.7%	953	17.1%	4,294	77.0%	1,280	23.0%	5,574	100%
1998	3,775	79.1%	998	20.9%	4,773	85.4%	565	69.1%	253	30.9%	818	14.6%	4,340	77.6%	1,251	22.4%	5,591	100%
1999	4,024	80.3%	990	19.7%	5,014	85.9%	587	71.1%	239	28.9%	826	14.1%	4,611	79.0%	1,229	21.0%	5,840	100%
2000	4,066	77.8%	1157	22.2%	5,223	86.8%	538	67.8%	255	32.2%	793	13.2%	4,604	76.5%	1,412	23.5%	6,016	100%
2001	4,196	78.3%	1162	21.7%	5,358	84.9%	644	67.8%	306	32.2%	950	15.1%	4,840	76.7%	1,468	23.3%	6,308	100%
2002	4,374	80.0%	1094	20.0%	5,468	84.6%	682	68.6%	312	31.4%	994	15.4%	5,056	78.2%	1,406	21.8%	6,462	100%
2003	4,421	80.1%	1101	19.9%	5,522	84.2%	740	71.4%	296	28.6%	1,036	15.8%	5,161	78.7%	1,397	21.3%	6,558	100%
2004	4,514	82.6%	950	17.4%	5,464	84.8%	699	71.1%	284	28.9%	983	15.2%	5,213	80.9%	1,234	19.1%	6,447	100%
2005	4,483	82.1%	980	17.9%	5,463	84.3%	704	69.2%	313	30.8%	1,017	15.7%	5,187	80.0%	1,293	20.0%	6,480	100%
2006	4,450	83.6%	872	16.4%	5,322	84.6%	661	68.1%	309	31.9%	970	15.4%	5,111	81.2%	1,181	18.8%	6,292	100%

Note: State of origin is state of residence at time of entry.

**COUNTRY OF ORIGIN OF INTERNATIONAL STUDENTS
FALL 2002 - FALL 2006**

COUNTRY	FALL 2002			FALL 2003			FALL 2004			FALL 2005			FALL 2006			% of 5 Year Tot:	
	UG	G	Tot	UG	G	Tot	UG	G	Tot	UG	G	Tot	UG	G	Tot	UG	G
Armenia	0	0	0	0	0	0	0	0	0	1	0	1	0	0	0	0.18%	0.00%
Australia	0	0	0	0	0	0	0	0	0	3	0	3	3	0	3	0.00%	0.00%
Austria	1	0	1	0	0	0	0	0	0	1	0	1	2	0	2	0.73%	0.00%
Bahamas	0	1	1	0	0	0	0	0	0	1	0	1	1	1	2	0.37%	0.95%
Bahrain	0	0	0	0	0	0	0	1	1	0	1	1	0	0	0	0.00%	0.95%
Bolivia	0	0	0	0	0	0	0	0	0	1	0	1	2	0	2	0.55%	0.00%
Brazil	8	1	9	9	1	10	7	0	7	10	2	12	10	2	12	8.06%	2.84%
Bulgaria	5	2	7	2	0	2	1	2	3	1	3	4	0	1	1	1.65%	3.79%
Cameroon	0	0	0	0	0	0	0	0	0	0	1	1	0	0	0	0.00%	0.47%
Canada	20	2	22	21	2	23	19	6	25	24	4	28	29	4	33	20.70%	8.53%
Chile	0	0	0	0	0	0	0	0	0	0	0	0	1	0	1	0.18%	0.00%
China, Republic of	2	4	6	3	2	5	2	2	4	1	2	3	1	1	2	1.65%	5.21%
Colombia	4	1	5	4	1	5	3	0	3	5	1	6	1	1	2	3.11%	1.90%
Croatia	0	0	0	0	0	0	1	0	1	1	0	1	1	0	1	0.55%	0.00%
Czech Republic	0	0	0	0	0	0	0	0	0	0	0	0	0	1	1	0.00%	0.47%
Denmark	0	0	0	0	0	0	1	0	1	2	0	2	1	0	1	0.73%	0.00%
Ecuador	0	0	0	0	0	0	0	1	1	1	0	1	0	0	0	0.18%	0.47%
El Salvador	0	0	0	0	0	0	0	0	0	1	0	1	1	1	2	0.37%	0.47%
Finland	0	0	0	1	0	1	0	0	0	2	0	2	2	0	2	0.92%	0.00%
France	9	5	14	4	6	10	10	3	13	6	4	10	11	2	13	7.33%	9.48%
Gabon	0	0	0	0	1	1	1	0	1	1	0	1	0	0	0	0.37%	0.47%
Georgia	0	0	0	1	0	1	0	0	0	0	0	0	0	0	0	0.18%	0.00%
Germany	3	2	5	2	0	2	1	0	1	4	0	4	8	2	10	3.30%	1.90%
Ghana	0	0	0	3	0	3	1	0	1	1	0	1	1	0	1	1.10%	0.00%
Hong Kong	1	0	1	2	0	2	2	0	2	1	0	1	2	2	4	1.47%	0.95%
Hungary	2	0	2	1	0	1	0	1	1	0	1	1	0	1	1	0.55%	1.42%
Iceland	3	1	4	3	1	4	0	0	0	0	0	0	0	0	0	1.10%	0.95%
India	3	3	6	2	3	5	3	5	8	4	5	9	7	8	15	3.48%	11.37%
Indonesia	0	1	1	0	0	0	0	0	0	0	0	0	0	0	0	0.00%	0.47%
Iran	0	0	0	0	0	0	0	0	0	0	0	0	0	1	1	0.00%	0.47%
Ireland	3	0	3	2	0	2	4	0	4	3	0	3	2	0	2	2.56%	0.00%
Italy	0	1	1	2	1	3	0	0	0	0	0	0	0	0	0	0.37%	0.95%
Jamaica	3	0	3	3	1	4	2	1	3	0	1	1	2	2	4	1.83%	2.37%
Japan	2	1	3	3	1	4	3	1	4	0	2	2	0	2	2	1.47%	3.32%
Kazakhstan	0	0	0	1	0	1	0	0	0	0	0	0	0	0	0	0.18%	0.00%
Kenya	2	0	2	3	0	3	3	0	3	5	1	6	4	2	6	3.11%	1.42%
Korea, Republic of	1	1	2	2	1	3	2	0	2	2	0	2	3	0	3	1.83%	0.95%
Kyrgyzstan	0	0	0	0	0	0	0	0	0	0	0	0	1	0	1	0.18%	0.00%
Lebanon	0	0	0	0	0	0	0	0	0	0	0	0	0	1	1	0.00%	0.47%
Liberia	2	1	3	2	2	4	2	1	3	2	1	3	1	0	1	1.65%	2.37%
Lithuania	0	0	0	0	0	0	0	0	0	0	0	0	0	1	1	0.00%	0.47%
Mexico	0	0	0	0	0	0	0	0	0	0	0	0	0	1	1	0.00%	0.47%
Morocco	0	1	1	0	1	1	1	0	1	0	0	0	0	0	0	0.18%	0.95%
Nepal	0	0	0	1	0	1	1	0	1	1	0	1	1	0	1	0.73%	0.00%
Netherlands	0	1	1	0	1	1	0	0	0	1	1	2	1	1	2	0.37%	1.90%
New Zealand	1	0	1	2	0	2	1	0	1	1	0	1	1	0	1	1.10%	0.00%
Niger	0	0	0	0	1	1	0	1	1	0	0	0	0	0	0	0.00%	0.95%
Nigeria	2	0	2	3	1	4	3	2	5	3	0	3	3	0	3	2.56%	1.42%
Norway	2	0	2	0	0	0	0	0	0	1	3	4	0	0	0	0.55%	1.42%
Panama	0	0	0	0	0	0	0	0	0	0	0	0	1	0	1	0.18%	0.00%
Peru	2	0	2	1	1	2	3	2	5	1	2	3	2	3	5	1.65%	3.79%
Philippines	1	2	3	0	1	1	0	2	2	1	1	2	2	1	3	0.73%	3.32%
Poland	2	1	3	2	1	3	2	1	3	0	2	2	0	1	1	1.10%	2.84%
Portugal	0	0	0	0	1	1	0	0	0	0	0	0	0	0	0	0.00%	0.47%
Romania	0	0	0	0	0	0	0	0	0	4	0	4	7	0	7	2.01%	0.00%
Russia	0	1	1	0	1	1	1	0	1	1	0	1	1	0	1	0.55%	0.95%
Saudi Arabia	0	0	0	1	0	1	0	0	0	0	0	0	0	1	1	0.18%	0.47%
Senegal	1	0	1	0	0	0	0	1	1	1	1	2	1	0	1	0.55%	0.95%
Sierra Leone	0	0	0	0	0	0	0	1	1	0	1	1	0	1	1	0.00%	1.42%
Slovakia	0	0	0	0	1	1	0	1	1	0	0	0	0	0	0	0.00%	0.95%
South Africa	0	0	0	0	0	0	1	0	1	1	0	1	2	0	2	0.73%	0.00%
Spain	1	0	1	1	2	3	2	2	4	2	1	3	3	0	3	1.65%	2.37%
Sri Lanka	1	0	1	0	0	0	0	0	0	0	0	0	0	0	0	0.18%	0.00%
Sweden	3	1	4	1	0	1	0	0	0	1	0	1	1	0	1	1.10%	0.47%
Switzerland	0	0	0	0	0	0	1	0	1	1	0	1	1	0	1	0.55%	0.00%
Taiwan	1	1	2	0	2	2	0	2	2	0	1	1	0	0	0	0.18%	2.84%
Tanzania	0	0	0	2	0	2	1	0	1	1	0	1	1	0	1	0.92%	0.00%
Thailand	0	0	0	0	1	1	0	2	2	0	1	1	1	0	1	0.18%	1.90%
Tonga	0	0	0	0	0	0	0	0	0	1	0	1	0	0	0	0.18%	0.00%
Trinidad and Tobago	0	0	0	0	0	0	0	0	0	0	0	0	1	0	1	0.18%	0.00%
Uganda	0	0	0	0	0	0	0	0	0	0	0	0	2	0	2	0.37%	0.00%
Ukraine	2	0	2	1	0	1	1	1	2	0	1	1	0	1	1	0.73%	1.42%
United Kingdom	6	2	8	7	2	9	6	1	7	4	0	4	3	0	3	4.76%	2.37%

Uzbekistan	0	0	0	0	0	0	1	0	1	1	0	1	1	0	1	0.55%	0.00%
Venezuela	0	0	0	0	0	0	0	0	0	0	0	0	1	1	0	0.18%	0.47%
Yugoslavia	0	0	0	0	0	0	0	0	0	0	0	0	1	0	0	0.18%	0.00%
Zambia	0	0	0	0	0	0	0	0	0	1	0	1	2	0	2	0.55%	0.00%
Zimbabwe	1	0	1	1	0	1	1	0	1	2	0	2	2	0	2	1.28%	0.00%
TOTAL	100	37	137	99	40	139	94	43	137	114	44	158	139	47	186	100.0%	100.0%

* Permanent residents not counted.

0.40%
0.00%
0.00%
0.40%
0.92%
100.0%

**GEOGRAPHICAL DISTRIBUTION OF STUDENTS
BY STATE
FALL 2001 - FALL 2005**

STATE	FALL 2001			FALL 2002			FALL 2003			FALL 2004			FALL 2005			% of 5 Year Total		
	UG	G	Total	UG	G	Total	UG	G	Total	UG	G	Total	UG	G	Total	UG	G	Total
Alabama	1	0	1	2	0	2	6	1	7	4	1	5	3	0	3	0.06%	0.03%	0.06%
Alaska	0	0	0	0	0	0	1	0	1	2	0	2	1	0	1	0.02%	0.00%	0.01%
Arizona	0	0	0	1	0	1	2	0	2	3	0	3	3	0	3	0.04%	0.00%	0.03%
Arkansas	0	0	0	1	0	1	1	1	2	0	0	0	1	0	1	0.01%	0.01%	0.01%
California	7	0	7	7	0	7	6	1	7	5	0	5	6	1	7	0.12%	0.03%	0.10%
Colorado	2	0	2	4	0	4	1	0	1	1	0	1	3	0	3	0.04%	0.00%	0.03%
Connecticut	7	0	7	7	0	7	8	0	8	7	0	7	4	0	4	0.13%	0.00%	0.10%
Delaware	1	0	1	1	0	1	3	0	3	4	0	4	2	0	2	0.04%	0.00%	0.03%
Florida	69	4	73	57	7	64	56	6	62	37	4	41	39	2	41	1.02%	0.34%	0.88%
Georgia	62	10	72	64	9	73	73	9	82	63	6	69	50	6	56	1.23%	0.60%	1.10%
Hawaii	1	0	1	1	0	1	1	0	1	2	0	2	2	0	2	0.03%	0.00%	0.02%
Idaho	0	0	0	0	0	0	0	0	0	0	0	0	1	0	1	0.00%	0.00%	0.00%
Illinois	10	0	10	10	1	11	12	3	15	8	2	10	8	1	9	0.19%	0.10%	0.17%
Indiana	3	2	5	4	2	6	6	0	6	3	0	3	2	1	3	0.07%	0.07%	0.07%
Iowa	3	0	3	1	0	1	2	0	2	4	0	4	5	0	5	0.06%	0.00%	0.05%
Kansas	3	0	3	2	0	2	5	1	6	3	1	4	1	0	1	0.06%	0.03%	0.05%
Kentucky	8	0	8	8	2	10	6	2	8	5	3	8	5	1	6	0.13%	0.12%	0.12%
Louisiana	5	1	6	5	1	6	2	1	3	1	0	1	1	0	1	0.06%	0.04%	0.05%
Maine	0	1	1	0	0	0	3	0	3	1	0	1	1	0	1	0.02%	0.01%	0.02%
Maryland	41	4	45	55	2	57	58	1	59	59	2	61	51	1	52	1.04%	0.15%	0.85%
Massachusetts	1	1	2	2	1	3	2	0	2	8	0	8	10	0	10	0.09%	0.03%	0.08%
Michigan	5	2	7	4	2	6	3	1	4	2	1	3	4	3	7	0.07%	0.13%	0.08%
Minnesota	3	0	3	2	0	2	6	0	6	5	0	5	3	0	3	0.07%	0.00%	0.06%
Mississippi	3	0	3	6	0	6	6	0	6	4	0	4	3	0	3	0.09%	0.00%	0.07%
Missouri	2	0	2	1	1	2	1	1	2	3	1	4	3	1	4	0.04%	0.06%	0.04%
Montana	1	0	1	1	0	1	0	0	0	2	0	2	0	0	0	0.02%	0.00%	0.01%
Nebraska	0	0	0	2	0	2	4	0	4	2	0	2	1	1	2	0.04%	0.01%	0.03%
Nevada	0	0	0	0	0	0	0	0	0	0	0	0	0	0	0	0.00%	0.00%	0.00%
New Hampshire	2	0	2	2	0	2	0	0	0	2	0	2	9	0	9	0.06%	0.00%	0.05%
New Jersey	11	2	13	14	1	15	14	0	14	12	1	13	19	2	21	0.28%	0.09%	0.24%
New Mexico	1	0	1	1	0	1	3	0	3	3	1	4	3	0	3	0.04%	0.01%	0.04%
New York	32	1	33	33	4	37	35	3	38	30	9	39	31	7	38	0.63%	0.36%	0.58%
North Carolina	123	233	356	113	227	340	130	212	342	130	200	330	121	233	354	2.43%	16.53%	5.37%
Ohio	27	2	29	39	4	43	40	3	43	48	2	50	43	2	45	0.78%	0.19%	0.65%
Oklahoma	1	0	1	2	0	2	3	0	3	3	0	3	1	0	1	0.04%	0.00%	0.03%
Oregon	2	0	2	2	0	2	2	0	2	4	0	4	3	0	3	0.05%	0.00%	0.04%
Pennsylvania	18	5	23	22	4	26	25	2	27	25	1	26	20	3	23	0.43%	0.22%	0.39%
Rhode Island	1	0	1	0	0	0	1	1	2	2	1	3	1	1	2	0.02%	0.04%	0.02%
South Carolina	4,196	1,162	5,358	4,374	1,094	5,468	4,421	1,101	5,522	4,514	950	5,464	4,450	872	5,322	86.51%	77.46%	84.62%
South Dakota	1	0	1	0	0	0	0	0	0	0	0	0	0	0	0	0.00%	0.00%	0.00%
Tennessee	10	0	10	15	1	16	16	1	17	18	2	20	15	2	17	0.29%	0.09%	0.25%
Texas	4	1	5	7	1	8	9	0	9	10	0	10	11	1	12	0.16%	0.04%	0.14%
Utah	0	0	0	1	0	1	2	0	2	2	0	2	2	0	2	0.03%	0.00%	0.02%
Vermont	2	0	2	2	0	2	2	0	2	3	0	3	1	0	1	0.04%	0.00%	0.03%
Virginia	46	5	51	57	2	59	61	4	65	53	1	54	51	6	57	1.06%	0.27%	0.89%
Washington	3	0	3	3	0	3	4	0	4	4	0	4	1	0	1	0.06%	0.00%	0.05%
West Virginia	9	0	9	14	1	15	13	2	15	13	1	14	7	2	9	0.22%	0.09%	0.19%
Wisconsin	3	0	3	3	0	3	4	0	4	4	1	5	1	1	2	0.06%	0.03%	0.05%
Wyoming	1	0	1	0	0	0	0	0	0	0	0	0	0	0	0	0.00%	0.00%	0.00%
Total U.S. States	4,731	1,436	6,167	4,952	1,367	6,319	5,059	1,357	6,416	5,118	1,191	6,309	5,003	1,150	6,153	97.97%	97.23%	97.81%
Dist. of Columbia	2	0	2	2	0	2	1	0	1	1	0	1	1	0	1	0.03%	0.00%	0.02%
International	104	31	135	100	37	137	99	40	139	94	43	137	107	31	138	1.99%	2.72%	2.14%
Puerto Rico	0	0	0	1	0	1	0	0	0	0	0	0	0	0	0	0.00%	0.00%	0.00%
Virgin Islands of the U.S	0	0	0	0	0	0	0	0	0	0	0	0	0	0	0	0.00%	0.00%	0.00%
Unknown	1	1	2	1	2	3	2	0	2	0	0	0	0	0	0	0.02%	0.04%	0.02%
Grand Total	4,838	1,468	6,306	5,056	1,406	6,462	5,161	1,397	6,558	5,213	1,234	6,447	5,111	1,181	6,292	100.0%	100.0%	100.0%

**GEOGRAPHICAL DISTRIBUTION OF STUDENTS
BY S.C. COUNTY
FALL 2002 - FALL 2006**

COUNTY	FALL 2002			FALL 2003			FALL 2004			FALL 2005			FALL 2006			% of 5 Year Total		
	UG	G	Total	UG	G	Total	UG	G	Total	UG	G	Total	UG	G	Total	UG	G	Total
Abbeville	12	1	13	14	0	14	12	0	12	16	12	28	9	13	22	0.24%	0.40%	0.28%
Aiken	99	18	117	105	14	119	97	13	110	80	11	91	84	12	96	1.81%	1.04%	1.65%
Allendale	10	2	12	9	2	11	5	0	5	8	0	8	4	0	4	0.14%	0.06%	0.12%
Anderson	57	9	66	63	7	70	70	11	81	62	23	85	80	14	94	1.29%	0.98%	1.23%
Bamberg	3	0	3	2	1	3	3	1	4	3	0	3	2	0	2	0.05%	0.03%	0.05%
Barnwell	20	2	22	18	2	20	18	0	18	12	3	15	10	5	15	0.30%	0.18%	0.28%
Beaufort	55	28	83	65	132	197	69	73	142	91	45	136	89	3	92	1.43%	4.31%	2.01%
Berkeley	86	14	100	96	8	104	105	7	112	125	4	129	123	3	126	2.08%	0.55%	1.77%
Calhoun	10	1	11	7	3	10	11	2	13	13	0	13	12	1	13	0.21%	0.11%	0.19%
Charleston	238	27	265	280	23	303	257	20	277	280	18	298	296	19	315	5.24%	1.64%	4.52%
Cherokee	22	10	32	30	12	42	39	7	46	33	3	36	45	2	47	0.66%	0.52%	0.63%
Chester	122	78	200	119	32	151	128	31	159	109	32	141	189	30	219	2.59%	3.11%	2.69%
Chesterfield	71	37	108	80	20	100	71	26	97	73	16	89	0	0	0	1.15%	1.52%	1.22%
Clarendon	20	1	21	26	6	32	22	4	26	20	11	31	21	8	29	0.42%	0.46%	0.43%
Colleton	29	13	42	28	3	31	33	1	34	33	2	35	31	2	33	0.60%	0.32%	0.54%
Darlington	64	6	70	55	12	67	48	10	58	35	2	37	30	7	37	0.90%	0.57%	0.83%
Dillon	27	6	33	27	8	35	24	12	36	23	14	37	26	14	40	0.49%	0.83%	0.56%
Dorchester	103	6	109	127	5	132	111	7	118	125	8	133	135	4	139	2.33%	0.46%	1.95%
Edgefield	8	9	17	7	0	7	9	0	9	8	0	8	8	1	9	0.16%	0.15%	0.15%
Fairfield	25	24	49	27	12	39	29	5	34	28	11	39	24	10	34	0.52%	0.95%	0.60%
Florence	114	13	127	103	21	124	92	16	108	77	11	88	89	13	102	1.84%	1.13%	1.70%
Georgetown	45	2	47	41	5	46	56	4	60	64	1	65	58	3	61	1.02%	0.23%	0.86%
Greenville	342	30	372	344	31	375	352	27	379	316	29	345	324	103	427	6.51%	3.37%	5.88%
Greenwood	34	12	46	26	13	39	32	15	47	33	74	107	0	0	0	0.49%	1.75%	0.74%
Hampton	10	2	12	7	2	9	5	2	7	8	3	11	2	2	4	0.12%	0.17%	0.13%
Horry	70	40	110	81	42	123	87	43	130	82	25	107	97	11	108	1.62%	2.47%	1.79%
Jasper	6	0	6	8	2	10	6	0	6	2	2	4	4	1	5	0.10%	0.08%	0.10%
Kershaw	77	33	110	77	62	139	60	52	112	63	39	102	63	44	107	1.32%	3.52%	1.77%
Lancaster	164	40	204	111	34	145	159	49	208	150	36	186	138	34	172	2.80%	2.96%	2.83%
Laurens	47	4	51	46	4	50	41	4	45	39	5	44	33	8	41	0.80%	0.38%	0.72%
Lee	16	3	19	10	3	13	11	2	13	10	0	10	14	3	17	0.24%	0.17%	0.22%
Lexington	271	76	347	271	61	332	268	92	360	257	90	347	264	91	355	5.17%	6.28%	5.39%
Marion	17	3	20	14	1	15	13	0	13	15	1	16	19	6	25	0.30%	0.17%	0.28%
Marlboro	3	0	3	4	0	4	3	0	3	1	0	1	1	0	1	0.05%	0.00%	0.04%
McCormick	23	7	30	24	5	29	23	4	27	29	2	31	37	5	42	0.53%	0.35%	0.49%
Newberry	21	6	27	17	9	26	17	7	24	20	8	28	17	9	26	0.36%	0.60%	0.41%
Oconee	51	4	55	54	2	56	66	4	70	56	5	61	50	4	54	1.08%	0.29%	0.92%
Orangeburg	56	9	65	58	15	73	67	10	77	59	8	67	63	19	82	1.18%	0.93%	1.13%
Pickens	49	8	57	59	3	62	55	4	59	49	3	52	67	2	69	1.08%	0.31%	0.93%
Richland	377	70	447	396	62	458	422	68	490	402	74	476	422	75	497	7.84%	5.35%	7.33%
Saluda	9	2	11	17	1	18	15	4	19	14	1	15	14	3	17	0.27%	0.17%	0.25%
Spartanburg	156	35	191	164	28	192	158	15	173	145	14	159	158	13	171	3.03%	1.61%	2.74%
Sumter	107	13	120	111	17	128	119	9	128	110	9	119	121	8	129	2.20%	0.86%	1.93%
Union	33	4	37	32	9	41	30	11	41	53	5	58	38	4	42	0.72%	0.51%	0.68%
Williamsburg	23	4	27	28	2	30	26	2	28	29	1	30	27	0	27	0.52%	0.14%	0.44%
York	1,172	382	1,554	1,133	365	1,498	1,170	276	1,446	1,223	319	1,542	1,112	263	1,375	22.55%	24.59%	22.97%
Total S.C.	4,374	1,094	5,468	4,421	1,101	5,522	4,514	950	5,464	4,483	980	5,463	4,450	872	5,322	86.34%	76.56%	84.37%
Out-of-State	582	275	857	641	256	897	605	241	846	590	269	859	554	278	832	11.54%	20.21%	13.29%
International	100	37	137	99	40	139	94	43	137	114	44	158	139	47	186	2.12%	3.23%	2.34%
Grand Total	5,056	1,406	6,462	5,161	1,397	6,558	5,213	1,234	6,447	5,187	1,293	6,480	5,143	1,197	6,340	100.0%	100.0%	100.0%

NEW START

HEADCOUNT ENROLLMENT AND CREDIT HOUR PRODUCTION

CATEGORY	2003			2004			2005		
	Spring	Summer	Fall	Spring	Summer	Fall	Spring	Summer	Fall
Headcount	510	201	483	498	199	513	488	162	480
CHP	5,251	1,268	5,131	5,193	1,224	5,379	4,972	1,019	5,138

HEADCOUNT ENROLLMENT BY STATUS AND CLASS

STATUS	2003			2004			2005		
	Spring	Summer	Fall	Spring	Summer	Fall	Spring	Summer	Fall
New Freshmen	2	0	4	0	0	1	3	0	2
New Transfer	43	7	47	36	10	72	31	9	59
Readmit	31	16	47	56	14	46	35	16	43
Continuing	412	172	370	391	169	365	401	133	353
Other	22	6	15	15	6	29	18	4	23
TOTAL	510	201	483	498	199	513	488	162	480

CLASS	2003			2004			2005		
	Spring	Summer	Fall	Spring	Summer	Fall	Spring	Summer	Fall
Freshman	39	4	25	25	6	34	28	1	28
Sophomore	85	17	80	77	17	77	68	15	73
Junior	133	52	144	127	38	136	125	29	117
Senior	231	120	220	258	131	246	241	112	243
Undergrad Special	22	8	14	11	7	20	26	5	19
Grad Degree Seeking	0	0	0	0	0	0	0	0	0
Grad Conditional	0	0	0	0	0	0	0	0	0
Grad Special	0	0	0	0	0	0	0	0	0
TOTAL	510	201	483	498	199	513	488	162	480

HEADCOUNT ENROLLMENT BY ETHNIC CATEGORY AND GENDER

ETHNIC CATEGORY	2003			2004			2005		
	Spring	Summer	Fall	Spring	Summer	Fall	Spring	Summer	Fall
Black, non-Hispanic	128	41	125	125	45	138	131	43	135
White, non-Hispanic	359	148	334	351	148	355	343	112	334
American Indian/Alaskan	4	3	6	6	3	5	2	1	2
Asian/Pacific Islander	7	7	10	8	0	6	4	3	3
International	0	0	0	0	1	1	0	0	0
Hispanic	11	1	7	8	2	8	8	3	6
Unknown	1	1	1	0	0	0	0	0	0
Total	510	201	483	498	199	513	488	162	480

GENDER	2003			2004			2005		
	Spring	Summer	Fall	Spring	Summer	Fall	Spring	Summer	Fall
Male	156	61	142	151	62	167	157	54	154
Female	354	140	341	347	137	346	331	108	326
Total	510	201	483	498	199	513	488	162	480

NOTE: The New Start program is a service/information program for adults age 25 and older who are beginning or continuing their education at the undergraduate level.

HEADCOUNT ENROLLMENT BY GENDER, CLASS, ETHNICITY & FULL/PART TIME FALL 2005

CLASS/ETHNICITY	FULL-TIME				PART-TIME				TOTAL CLASS	
	FEMALE		MALE		FEMALE		MALE		N	%
	N	%	N	%	N	%	N	%		
FRESHMAN	781	100%	336	100%	18	100%	4	100%	1,139	100%
International	18	2.3%	10	3.0%	0	0.0%	0	0.0%	28	2.5%
Black(Non-Hispanic)	218	27.9%	76	22.6%	6	33.3%	2	50.0%	302	26.5%
Native American	4	0.5%	2	0.6%	0	0.0%	0	0.0%	6	0.5%
Asian	13	1.7%	4	1.2%	0	0.0%	0	0.0%	17	1.5%
Hispanic	11	1.4%	3	0.9%	0	0.0%	0	0.0%	14	1.2%
White(Non-Hispanic)	517	66.2%	241	71.7%	12	66.7%	2	50.0%	772	67.8%
Unknown	0	0.0%	0	0.0%	0	0.0%	0	0.0%	0	0.0%
SOPHOMORE	714	100%	337	100%	40	100%	16	100%	1,107	100%
International	10	1.4%	13	3.9%	0	0.0%	0	0.0%	23	2.1%
Black(Non-Hispanic)	214	30.0%	97	28.8%	20	50.0%	5	31.3%	336	30.4%
Native American	3	0.4%	1	0.3%	0	0.0%	0	0.0%	4	0.4%
Asian	11	1.5%	4	1.2%	0	0.0%	0	0.0%	15	1.4%
Hispanic	12	1.7%	5	1.5%	1	2.5%	0	0.0%	18	1.6%
White(Non-Hispanic)	464	65.0%	217	64.4%	19	47.5%	11	68.8%	711	64.2%
Unknown	0	0.0%	0	0.0%	0	0.0%	0	0.0%	0	0.0%
JUNIOR	799	100%	357	100%	48	100%	23	100%	1,227	100%
International	12	1.5%	7	2.0%	0	0.0%	0	0.0%	19	1.5%
Black(Non-Hispanic)	241	30.2%	90	25.2%	16	33.3%	5	21.7%	352	28.7%
Native American	2	0.3%	1	0.3%	0	0.0%	1	4.3%	4	0.3%
Asian	8	1.0%	8	2.2%	0	0.0%	0	0.0%	16	1.3%
Hispanic	8	1.0%	6	1.7%	1	2.1%	0	0.0%	15	1.2%
White(Non-Hispanic)	528	66.1%	245	68.6%	31	64.6%	17	73.9%	821	66.9%
Unknown	0	0.0%	0	0.0%	0	0.0%	0	0.0%	0	0.0%
SENIOR	854	100%	393	100%	116	100%	59	100%	1,422	100%
International	12	1.4%	9	2.3%	1	0.9%	0	0.0%	22	1.5%
Black(Non-Hispanic)	243	28.5%	90	22.9%	33	28.4%	15	25.4%	381	26.8%
Native American	4	0.5%	2	0.5%	1	0.9%	0	0.0%	7	0.5%
Asian	9	1.1%	3	0.8%	3	2.6%	0	0.0%	15	1.1%
Hispanic	8	0.9%	8	2.0%	1	0.9%	0	0.0%	17	1.2%
White(Non-Hispanic)	578	67.7%	281	71.5%	77	66.4%	44	74.6%	980	68.9%
UNDERGRADUATE SPECIAL	10	100%	6	100%	209	100%	67	100%	292	100%
International	5	50.0%	6	100.0%	7	3.3%	4	6.0%	22	7.5%
Black(Non-Hispanic)	0	0.0%	0	0.0%	45	21.5%	15	22.4%	60	20.5%
Native American	0	0.0%	0	0.0%	1	0.5%	0	0.0%	1	0.3%
Asian	3	30.0%	0	0.0%	4	1.9%	3	4.5%	10	3.4%
Hispanic	0	0.0%	0	0.0%	2	1.0%	3	4.5%	5	1.7%
White(Non-Hispanic)	2	20.0%	0	0%	150	71.8%	42	62.7%	194	66.4%
Unknown	0	0.0%	0	0.0%	0	0.0%	0	0.0%	0	0.0%
GRADUATE	207	100%	115	100%	231	100%	114	100%	668	100%
International	10	4.8%	21	18.3%	6	2.6%	4	3.5%	41	6.1%
Black(Non-Hispanic)	48	23.2%	17	14.8%	50	21.6%	20	17.5%	135	20.2%
Native American	2	1.0%	0	0.0%	2	0.9%	1	0.9%	5	0.7%
Asian	3	1.4%	1	0.9%	3	1.3%	0	0.0%	7	1.0%
Hispanic	4	1.9%	1	0.9%	0	0.0%	0	0.0%	5	0.7%
White(Non-Hispanic)	140	67.6%	75	65%	170	73.6%	89	78.1%	474	71.0%
Unknown	0	0.0%	0	0.0%	1	0.4%	0	0.0%	1	0.1%
GRADUATE SPECIAL	3	100%	3	100%	499	100%	121	100%	626	100%
International	0	0.0%	2	66.7%	0	0.0%	1	0.8%	3	0.5%
Black(Non-Hispanic)	0	0.0%	0	0.0%	56	11.2%	16	13.2%	72	11.5%
Native American	0	0.0%	0	0.0%	0	0.0%	0	0.0%	0	0.0%
Asian	0	0.0%	0	0.0%	3	0.6%	0	0.0%	3	0.5%
Hispanic	0	0.0%	0	0.0%	5	1.0%	0	0.0%	5	0.8%
White(Non-Hispanic)	3	100.0%	1	33%	435	87.2%	104	86.0%	543	86.7%
Unknown	0	0.0%	0	0%	0	0.0%	0	0.0%	0	0.0%
GRAND TOTAL	3,368	52%	1,547	23.9%	1,161	17.9%	404	6.2%	6,480	100%

**HEADCOUNT ENROLLMENT
BY ETHNIC CATEGORY & FULL/PART TIME
FALL 2005**

ETHNIC CATEGORY	FULL-TIME		PART-TIME		TOTAL	
	N	%	N	%	N	%
Undergraduate	4,587	100%	600	100%	5,187	100%
White, non-Hispanic	3,073	67.0%	405	67.5%	3,478	67.1%
Black, non-Hispanic	1,269	27.7%	162	27.0%	1,431	27.6%
International	102	2.2%	12	2.0%	114	2.2%
American Indian	19	0.4%	3	0.5%	22	0.4%
Asian/Pacific Islander	63	1.4%	10	1.7%	73	1.4%
Hispanic	61	1.3%	8	1.3%	69	1.3%
Unknown	0	0.0%	0	0.0%	0	0.0%
Graduate	328	100%	965	100%	1,293	100%
White, non-Hispanic	219	66.8%	798	82.7%	1,017	78.7%
Black, non-Hispanic	65	19.8%	142	14.7%	207	16.0%
International	33	10.1%	11	1.1%	44	3.4%
American Indian	2	0.6%	3	0.3%	5	0.4%
Asian/Pacific Islander	4	1.2%	6	0.6%	10	0.8%
Hispanic	5	1.5%	5	0.5%	10	0.8%
Unknown	0	0.0%	0	0.0%	0	0.0%
Total Students	4,915	100%	1,565	100%	6,480	100%
White, non-Hispanic	3,292	67.0%	1,203	76.9%	4,495	69.4%
Black, non-Hispanic	1,334	27.1%	304	19.4%	1,638	25.3%
International	135	2.7%	23	1.5%	158	2.4%
American Indian	21	0.4%	6	0.4%	27	0.4%
Asian/Pacific Islander	67	1.4%	16	1.0%	83	1.3%
Hispanic	66	1.3%	13	0.8%	79	1.2%
Unknown	0	0.0%	0	0.0%	0	0.0%

**HEADCOUNT ENROLLMENT
FALL 1996 - FALL 2005**

ETHNIC CATEGORY	1996		1997		1998		1999		2000	
	N	%	N	%	N	%	N	%	N	%
Total Students	5,402	100%	5,574	100%	5,591	100%	5,840	100%	6,062	100%
White, non-Hispanic	4,059	75.1%	4,158	74.6%	4,166	74.5%	4,312	73.8%	4,465	73.7%
Black, non-Hispanic	1,114	20.6%	1,191	21.4%	1,198	21.4%	1,294	22.2%	1,349	22.3%
International	119	2.2%	105	1.9%	96	1.7%	104	1.8%	119	2.0%
American Indian	20	0.4%	22	0.4%	28	0.5%	22	0.4%	19	0.3%
Asian/Pacific Islander	39	0.7%	44	0.8%	55	1.0%	57	1.0%	55	0.9%
Hispanic	51	0.9%	54	1.0%	48	0.9%	51	0.9%	55	0.9%
Unknown	0	0.0%	0	0.0%	0	0.0%	0	0.0%	0	0.0%

ETHNIC CATEGORY	2001		2002		2003		2004		2005	
	N	%	N	%	N	%	N	%	N	%
Total Students	6,306	100%	6,462	100%	6,558	100%	6,447	100%	6,480	100%
White, non-Hispanic	4,532	71.9%	4,557	71.9%	4,616	70.4%	4,501	69.8%	4,495	69.4%
Black, non-Hispanic	1,484	23.5%	1,571	23.5%	1,627	24.8%	1,634	25.3%	1,638	25.3%
International	135	2.1%	137	2.1%	139	2.1%	137	2.1%	158	2.4%
American Indian	19	0.3%	23	0.3%	24	0.4%	30	0.5%	27	0.4%
Asian/Pacific Islander	65	1.0%	71	1.0%	63	1.0%	61	0.9%	83	1.3%
Hispanic	62	1.0%	68	1.0%	78	1.2%	75	1.2%	79	1.2%
Unknown	9	0.1%	35	0.1%	11	0.2%	9	0.1%	0	0.0%

**AVERAGE WINTHROP STUDENT AGE
1996 - 2005**

LEVEL	1996	1997	1998	1999	2000	2001	2002	2003	2004	2005
Undergraduate	21.4	21.4	21.3	21.6	21.6	21.6	21.6	21.4	21.5	21.4
Graduate	32.7	33.5	32.5	33.5	34.3	34.4	34.5	34.4	33.0	32.6

**UNDERGRADUATE HEADCOUNT ENROLLMENT
BY AGE OF STUDENTS
FALL 2005**

Age	Winthrop		State FT %	Winthrop Cum FT %	State Cum FT %	Winthrop		State PT %	Winthrop Cum PT %	State Cum PT %
	FT #	FT %				PT #	PT %			
under 18	40	0.9%		0.9%	0.0%	218	36.3%		36.3%	0.0%
18 - 19	1,751	38.2%		39.0%	0.0%	16	2.7%		39.0%	0.0%
20 - 21	1,767	38.5%		77.6%	0.0%	22	3.7%		42.7%	0.0%
22 - 24	751	16.4%		93.9%	0.0%	101	16.8%		59.5%	0.0%
25 - 29	152	3.3%		97.3%	0.0%	81	13.5%		73.0%	0.0%
30 - 34	48	1.0%		98.3%	0.0%	38	6.3%		79.3%	0.0%
35 - 39	38	0.8%		99.1%	0.0%	46	7.7%		87.0%	0.0%
40 - 49	33	0.7%		99.8%	0.0%	56	9.3%		96.3%	0.0%
50 - 64	6	0.1%		100.0%	0.0%	19	3.2%		99.5%	0.0%
65 and older	1	0.0%		100.0%	0.0%	3	0.5%		100.0%	0.0%
Unknown	0	0.0%		100.0%	0.0%	0	0.0%		100.0%	0.0%
Total	4,587	100.0%	100.0%	100.0%	100.0%	600	100.0%	100.0%	100.0%	100.0%

Note: State percentiles are for all S.C. Public Senior Institutions.

**UNDERGRADUATE STUDENTS AGE 25 AND OLDER
FALL 1996-2005**

	1996	1997	1998	1999	2000	2001	2002	2003	2004	2005
Number	535	468	527	550	547	548	555	530	558	521
Percent	12.79%	11%	12.14%	11.93%	11.73%	11.33%	10.98%	10.27%	10.81%	10.09%

**GRADUATE HEADCOUNT ENROLLMENT
BY AGE OF STUDENTS
FALL 2005**

Age	Winthrop		State FT %	Winthrop Cum FT %	State Cum FT %	Winthrop		State PT %	Winthrop Cum PT %	State Cum PT %
	FT #	FT %				PT #	PT %			
under 18	0	0.0%		0.0%	0.0%	0	0.0%		0.0%	0.0%
18 - 19	0	0.0%		0.0%	0.0%	0	0.0%		0.0%	0.0%
20 - 21	5	1.5%		1.5%	0.0%	2	0.2%		0.2%	0.0%
22 - 24	127	38.7%		40.2%	0.0%	218	22.6%		22.8%	0.0%
25 - 29	96	29.3%		69.5%	0.0%	244	25.3%		48.1%	0.0%
30 - 34	40	12.2%		81.7%	0.0%	143	14.8%		62.9%	0.0%
35 - 39	34	10.4%		92.1%	0.0%	100	10.4%		73.3%	0.0%
40 - 49	15	4.6%		96.6%	0.0%	144	14.9%		88.2%	0.0%
50 - 64	11	3.4%		100.0%	0.0%	104	10.8%		99.0%	0.0%
65 and older	0	0.0%		100.0%	0.0%	10	1.0%		100.0%	0.0%
Unknown	0	0.0%		100.0%	0.0%	0	0.0%		100.0%	0.0%
Total	328	100.0%	100.0%	100.0%	100.0%	965	100.0%	100.0%	100.0%	100.0%

Note: State percentiles are for all S.C. Public Senior Institutions.

UNDERGRADUATE HEADCOUNT ENROLLMENT FALL 2001 - FALL 2005

COLLEGE / DEGREE PROGRAMS	2001	2002	2003	2004	2005	% OF 5 YEAR TOTAL	04 TO 05 % DIFF.
ARTS & SCIENCES	1,814	1,941	2,029	2,056	2,056	36.4%	0.0%
Biology	277	314	334	345	320	5.9%	-7.2%
Chemistry	53	46	36	45	73	0.8%	62.2%
English	119	126	148	142	164	2.5%	15.5%
Environmental Science (B.S.)	4	12	12	14	14	0.2%	0.0%
Environmental Studies (B.A.)	*	4	14	14	10	0.1%	-28.6%
General Communication Disorders	60	67	64	59	56	1.2%	-5.1%
History	144	154	149	163	169	2.8%	3.7%
Human Nutrition	49	45	50	56	59	0.9%	5.4%
Integrated MKTG Communication *	125	108	77	112	33	2.0%	-70.5%
Mass Communication	186	132	97	71	73	2.3%	2.8%
Mathematics (B.A.)	16	26	36	31	40	0.5%	29.0%
Mathematics (B.S.)	36	41	25	20	15	0.6%	-25.0%
Medical Technology	7	2	1	*	*	0.0%	N/A
Modern Languages	34	41	45	46	65	0.8%	41.3%
Philosophy & Religious Studies	26	33	25	26	37	0.5%	42.3%
Political Science	172	192	182	163	175	3.3%	7.4%
Pre-Engineering	7	6	14	11	11	0.2%	0.0%
Pre-Integrated Marketing	*	60	61	78	75	0.9%	-3.8%
Pre-Mass Communication	*	14	113	133	109	1.2%	-18.0%
Psychology	264	274	284	291	313	5.2%	7.6%
Science Communications	6	3	3	1	2	0.1%	100.0%
Social Work	126	125	114	100	97	2.2%	-3.0%
Sociology	103	116	145	135	146	2.3%	8.1%
BUSINESS ADMINISTRATION	1,293	1,274	1,192	1,103	1,107	22.5%	0.4%
Business Administration	963	977	923	884	897	17.4%	1.5%
Computer Science	117	105	100	77	76	1.9%	-1.3%
Economics	*	*	9	7	8	0.1%	14.3%
Integrated MKTG Communication *	125	108	77	34	33	1.6%	-2.9%
Sport Management *	88	84	83	101	93	1.7%	-7.9%
EDUCATION	870	938	978	994	969	17.5%	-2.5%
Business Education	2	2	*	*	*	0.0%	N/A
Early Childhood Education	212	245	258	272	261	4.6%	-4.0%
Elementary Education	356	376	361	322	300	6.6%	-6.8%
Family & Consumer Science	45	54	74	83	92	1.2%	10.8%
Middle Level Education	*	*	*	*	19	0.0%	N/A
Physical Education	85	103	122	140	146	2.1%	4.3%
Special Education	82	74	80	76	58	1.4%	-23.7%
Sport Management *	88	84	83	101	93	1.7%	-7.9%
VISUAL & PERFORMING ARTS	681	756	810	831	853	14.3%	2.6%
Art (B.A.)	119	123	109	106	111	2.1%	4.7%
Art (B.F.A.)	271	322	347	355	358	6.0%	0.8%
Art History (B.A.)	14	16	15	23	26	0.3%	13.0%
Dance	47	58	77	77	72	1.2%	-6.5%
Music (B.A.)	42	37	46	41	50	0.8%	22.0%
Music Education (Choral)	33	29	33	40	41	0.6%	2.5%
Music Education (Instrumental)	42	43	37	54	58	0.8%	7.4%
Music (Performance)	30	32	36	40	32	0.6%	-20.0%
Theatre	83	96	110	95	105	1.8%	10.5%
PRE-MAJOR	464	421	429	442	453	8.1%	2.5%
New Start Undecided	5	2	2	2	1	0.1%	-50.0%
Pre-Business	18	13	9	13	9	0.2%	-30.8%
Pre-Education	7	9	9	4	4	0.1%	0.0%
Pre-Major	154	165	161	149	142	2.9%	-4.7%
Pre-Nursing	10	15	26	34	17	0.4%	-50.0%
Distance Learning	237	191	200	217	255	3.9%	17.5%
Non-Degree Transient	21	12	15	15	13	0.3%	-13.3%
Non-Degree Undergraduate	12	14	7	8	12	0.2%	50.0%

Note: Counts include double majors and students working toward two degrees.

* Interdisciplinary program

**GRADUATE HEADCOUNT ENROLLMENT
FALL 2001 - FALL 2005**

COLLEGE / DEGREE PROGRAMS	2001	2002	2003	2004	2005	% OF 5-YEAR TOTAL	04 TO 05 % DIFF.
ARTS AND SCIENCES	121	123	132	125	134	7.3%	7.2%
Biology	11	13	17	20	21	0.9%	5.0%
English	12	11	15	17	20	0.8%	17.6%
Gerontology (Cert.)	*	1	4	1	0	0.1%	-100.0%
History	11	14	13	12	10	0.7%	-16.7%
Human Nutrition (MS)	27	25	22	22	22	1.4%	0.0%
Human Nutrition (CERT)	*	*	1	2	1	0.0%	-50.0%
Liberal Arts	20	25	19	17	24	1.2%	41.2%
Mathematics	1	3	6	3	2	0.2%	-33.3%
School Psychology	25	24	28	27	29	1.5%	7.4%
Spanish	14	7	7	4	5	0.5%	25.0%
BUSINESS ADMINISTRATION	219	240	248	246	215	14.0%	-12.6%
Business Administrator	176	206	216	206	178	11.8%	-13.6%
Executive MBA	40	25	24	32	26	1.8%	-18.8%
Software Development	3	9	8	8	11	0.4%	37.5%
EDUCATION	329	303	310	318	276	18.5%	-13.2%
Counseling & Dev (Guidance)	47	37	46	47	39	2.6%	-17.0%
Curriculum and Instruction (Med)	*	*	25	26	37	0.7%	42.3%
Educational Administration (EdS)	3	*	*	*	*	0.0%	0.0%
Educational Leadership	70	59	76	93	61	4.4%	-34.4%
Elementary Education **	14	13	3	*	*	0.4%	N/A
Middle Level Educator	25	24	26	38	34	1.7%	-10.5%
Physical Educator	12	17	15	13	15	0.8%	15.4%
Reading	85	75	54	37	26	3.7%	-29.7%
Secondary Education (MAT)							
Biology	4	4	4	1	3	0.2%	200.0%
Business	3	5	10	12	8	0.4%	-33.3%
English	8	11	13	10	6	0.6%	-40.0%
Family Consumer Science	1	2	0	1	2	0.1%	100.0%
French	1	1	0	2	2	0.1%	0.0%
Mathematics	0	1	1	1	2	0.0%	100.0%
Social Studies	9	17	12	12	10	0.7%	-16.7%
Spanish	0	0	1	1	1	0.0%	0.0%
Secondary Education (MEd) **	11	6	1	1	*	0.3%	N/A
Special Education	16	15	14	12	18	0.8%	50.0%
Teacher Education Art K-12	6	4	4	6	5	0.3%	-16.7%
Teacher Education Dance K-12	0	0	0	0	0	0.0%	
Teacher Education Music K-12	6	5	3	2	1	0.2%	-50.0%
Teacher Education Physical Ed. K-12	8	7	2	3	6	0.3%	100.0%
VISUAL & PERFORMING ARTS	25	26	54	60	50	2.4%	-16.7%
Art Education	1	3	7	6	6	0.2%	0.0%
Arts Administrator	*	*	18	22	19	0.6%	-13.6%
Conducting	6	7	11	12	6	0.5%	-50.0%
Fine Arts	6	7	9	10	7	0.5%	-30.0%
Music Educator	5	8	2	3	5	0.3%	66.7%
Music Performance	7	1	7	7	7	0.3%	0.0%
UNDESIGNATED/UNASSIGNED	774	715	677	485	618	38.9%	27.4%
ACRT	5	4	4	3	2	0.2%	-33.3%
COAE	0	0	0	1	0	0.0%	-100.0%
GNDG	733	688	649	464	602	37.1%	29.7%
ICRT	7	5	6	3	7	0.3%	133.3%
RCRT	3	1	0	1	0	0.1%	-100.0%
TRNS	7	7	3	4	7	0.3%	75.0%
Degree Programs (GS Class)	19	10	15	9	0	0.8%	-100.0%
TOTAL	1,468	1,407	1,421	1,234	1,293	100.0%	4.8%

**Med Elem & Med Secondary moved to options under Med Curriculum & Instructor

**Ratio of FTE Students to FTE Teaching Faculty
FALL 2000 - FALL 2005**

(Performance Funding Indicator 3A)

	FALL 2001	FALL 2002	FALL 2003	FALL 2004	FALL 2005
Credit Hour Production	73,604	78,349	81,122	80,292	80,340
Undergraduate	67,104	71,440	73,701	73,924	73,547
Graduate	6,500	6,909	7,421	6,368	6,793
FTE Students*	5,015	5,338	5,532	5,459	5,469
Undergraduate	4,474	4,763	4,913	4,928	4,903
Graduate	542	576	618	531	566
FTE Teaching Faculty**	330	340	368	369	386
FTE Students/FTE Faculty	15.2	15.7	15.0	14.8	14.2

* FTE Students = CHP divided by 15 for undergraduates & 12 for graduates.

** FTE Teaching Faculty=Headcount FT Instructional Faculty(who teach at least 3 hrs Fall) and FTE of Part-time faculty.

CREDIT HOUR PRODUCTION BY DEPARTMENT

FALL 2001-2005

DEPARTMENT	FALL 2001		FALL 2002		FALL 2003		FALL 2004		FALL 2005		04 TO 05 % DIFF.	
	UG	G	UG	G	UG	G	UG	G	UG	G	UG	G
Arts and Sciences	37,541	1,256	40,153	1,179	41,935	1,371	41,466	1,187	40,339	1,205	-2.7%	1.5%
Biology	3,870	109	4,219	133	4,397	142	4,362	153	4,222	177	-3.2%	15.7%
BIOL	3,745	105	4,001	129	4,375	134	4,175	149	4,218	177	1.0%	18.8%
SCIE	125	4	218	4	22	8	187	4	4	0	-97.9%	-100.0%
Chemistry	2,457	3	2,899	10	3,043	5	2,782	0	2,691	0	-3.3%	0.0%
CHEM	964	3	1,304	10	1,408	5	1,380	0	1,151	0	-16.6%	0.0%
ENVS	N/A	N/A	66	0	94	0	63	0	60	0	-4.8%	0.0%
GEOL	739	0	735	0	930	0	727	0	802	0	10.3%	0.0%
PHSC	461	0	0	0	0	0	0	0	0	0	0.0%	0.0%
PHYS	293	0	794	0	611	0	612	0	678	0	10.8%	0.0%
English	6,623	239	6,899	169	7,369	229	7,168	182	6,914	160	-3.5%	-12.1%
CRTW	N/A	N/A	N/A	N/A	N/A	N/A	45	0	1,314	0	2820.0%	0.0%
ENGL	1,867	198	1,662	135	1,980	178	2,196	129	1,608	120	-26.8%	-7.0%
ENGE	16	20	35	16	36	36	71	20	43	16	-39.4%	-20.0%
SPCH	705	0	591	0	712	0	828	0	691	0	-16.5%	0.0%
WRIT	4,035	21	4,611	18	4,641	15	4,028	33	3,258	24	-19.1%	-27.3%
History	3,793	114	4,363	138	4,061	136	4,235	132	3,679	107	-13.1%	-18.9%
HIST	3,765	102	4,319	114	4,017	120	4,207	108	3,643	99	-13.4%	-8.3%
SCST	28	12	44	24	44	16	28	24	36	8	28.6%	-66.7%
Human Nutrition	1,053	122	997	108	1,216	116	1,252	136	1,509	105	20.5%	-22.8%
NUTR	525	122	544	108	790	110	1,021	133	1,188	105	16.4%	-21.1%
GEOG	528	0	453	0	426	6	231	3	321		39.0%	-100.0%
Mass Communication	1,301	0	1,387	0	1,379	0	1,379	0	1,390	0	0.8%	0.0%
MCOM	1,235	3	1,256	0	1,260	0	1,280	0	1,318	0	3.0%	0.0%
IMCO	66	0	131	0	119	0	99	0	72	0	-27.3%	0.0%
Mathematics	4,648	27	4,749	51	5,182	69	4,672	39	4,682	46	0.2%	17.9%
MAED	8	0	16	0	21	0	84	0	76	4	-9.5%	100.0%
MATH	4,640	27	4,733	51	5,161	69	2,440	39	2,233	42	-8.5%	7.7%
CTQR	N/A	N/A	N/A	N/A	N/A	N/A	2,148	0	2,373	0	10.5%	0.0%
Modern & Classical Lang.	3,655	99	3,682	46	4,067	49	4,317	25	3,947	49	-8.6%	96.0%
CHIN	28	0	20	0	36	0	24	0	0	0	-100.0%	0.0%
FREN	740	6	685	6	841	0	828	0	727	3	-12.2%	100.0%
GERM	233	0	231	0	237	0	214	0	183	0	-14.5%	0.0%
ITAL	152	0	144	0	192	0	188	0	176	0	-6.4%	0.0%
JAPN	84	0	76	0	72	0	84	0	80	8	-4.8%	100.0%
LATN	76	0	95	0	84	0	92	0	32	0	-65.2%	0.0%
MLAN	4	0	20	4	12	9	8	4	8	8	0.0%	100.0%
SPAN	2,338	93	2,411	36	2,593	40	2,879	21	2,741	30	-4.8%	42.9%
Philosophy & Religion	1,053	0	925	0	934	0	996	0	1,350	0	35.5%	0.0%
PHIL	603	0	489	0	504	0	576	0	600	0	4.2%	0.0%
RELG	450	0	436	0	430	0	420	0	750	0	78.6%	0.0%
Political Science	2,688	15	2,858	6	2,674	0	2,782	3	2,484	21	-10.7%	600.0%
AAMS	N/A	N/A	90	0	87	0	90	0	93	0	3.3%	0.0%
PLSC	2,688	15	2,768	6	2,587	0	2,692	3	2,391	21	-11.2%	600.0%
Psychology	2,620	456	2,696	434	2,913	526	2,884	463	2,932	459	1.7%	-0.9%
PSYC	2,620	456	2,696	434	2,913	526	2,884	463	2,932	459	1.7%	-0.9%
Sociology	2,796	21	3,441	15	3,602	18	3,744	6	3,807	3	1.7%	-50.0%
ANTH	456	0	915	0	1,152	6	1,308	3	1,206		-7.8%	-100.0%
GRNT	99	0	183	0	93	0	99	0	153	0	54.5%	0.0%
SOCL	2,175	21	2,250	15	2,264	12	2,256	3	2,352	3	4.3%	0.0%
WMST	66	0	93	0	93	0	81	0	96	0	18.5%	0.0%
Social Work	975	9	1,038	18	1,080	12	893	3	732	12	-18.0%	300.0%
SCWK	975	9	1,038	18	1,080	12	893	3	732	12	-18.0%	300.0%
Speech	705	0	591	0	712	0	828	0	691	0	-16.5%	0.0%
SPCH	705	0	591	0	712	0	828	0	691	0	-16.5%	0.0%
Other	9	42	0	51	18	69	0	45	0	66	0.0%	46.7%
INAS	9	0	0	0	18	0	0	0	0	0	0.0%	0.0%
LART	0	42	0	51	0	69	0	45	0	66	0.0%	46.7%
University College	1,382	0	1,334	0	1,464	0	1,679	0	2,060	0	22.7%	0.0%
ACAD	*	*	*	*	1,077	0	1,009	0	1,023	0	1.4%	0.0%
CISM	946	0	1,085	0	*	*	*	*	*	*	N/A	N/A
GNED	405	0	207	0	378	0	654	0	1,002	0	53.2%	0.0%
HONR	31	0	42	0	9	0	16	0	35	0	118.8%	0.0%
	UG	G	UG	G	UG	G	UG	G	UG	G	UG	G

CREDIT HOUR PRODUCTION BY DEPARTMENT

FALL 2001-2005

DEPARTMENT	FALL 2001		FALL 2002		FALL 2003		FALL 2004		FALL 2005		04 TO 05 % DIFF.	
	UG	G	UG	G	UG	G	UG	G	UG	G	UG	G
Business Admin.	11,571	1,616	11,642	1,764	11,750	1,800	11,649	1,782	11,080	1,575	-4.9%	-11.6%
Acct, Finance, & Econ.	4,302	459	4,066	456	4,224	495	3,828	498	3,864	426	0.9%	-14.5%
ACCT	1,545	255	1,438	246	1,458	252	1,485	195	1,434	162	-3.4%	-16.9%
ECON	1,845	60	1,830	105	2,016	90	1,575	123	1,620	87	2.9%	-29.3%
FINC	912	144	798	105	750	153	768	180	810	177	5.5%	-1.7%
Com. Sci. & Quan. Meth.	2,664	60	2,528	162	2,741	138	2,672	114	2,605	111	-2.5%	-2.6%
CSCI	1,836	6	1,751	42	1,841	9	1,772	30	1,735	39	-2.1%	30.0%
QMTH	828	54	777	120	900	129	900	84	870	72	-3.3%	-14.3%
Management & Mktg.	4,605	1,097	5,048	1,146	4,785	1,167	5,149	1,170	4,611	1,038	-10.4%	-11.3%
BADM	799	524	1,029	327	1,032	315	1,281	450	1,224	366	-4.4%	-18.7%
HLAD/HLISM	273	0	198	0	249	0	189	0	0	0	-100.0%	0.0%
IMCO	66	0	131	0	119	0	99	0	99	0	0.0%	0.0%
MGMT	2,337	471	2,502	720	2,004	714	2,133	600	2,310	579	8.3%	-3.5%
MKTG	990	102	1,053	99	1,233	138	1,047	120	978	93	-6.6%	-22.5%
SPMA	140	0	135	0	148	0	400	0	0	0	-100.0%	0.0%
Education	7,735	3,377	8,515	3,408	8,646	3,784	8,998	2,981	8,991	3,291	-0.1%	10.4%
Center for Pedagogy	3,238	1,138	3,602	1,001	3,686	1,251	3,792	1,095	3,792	978	0.0%	-10.7%
EDUC	3,238	640	3,602	671	3,686	735	3,792	564	3,792	564	0.0%	0.0%
EDLD	0	498	0	330	0	516	0	531	0	414	0.0%	-22.0%
Curriculum & Inst.	2,291	604	2,512	747	2,470	742	2,421	742	2,227	708	-8.0%	-4.6%
CSDV	0	267	0	309	0	444	0	342	0	312	0.0%	-8.8%
ECED	387	0	573	0	648	33	552	0	521	0	-5.6%	0.0%
EDCI	141	90	183	60	177	84	180	171	300	198	66.7%	15.8%
ELEM	689	0	707	0	628	0	640	0	583	0	-8.9%	0.0%
READ	583	108	575	177	546	63	507	75	484	54	-4.5%	-28.0%
SCED	0	3	0	9	0	12	0	12	60	21	100.0%	75.0%
SPED	288	129	307	165	217	78	263	123	267	117	1.5%	-4.9%
VCED	203	7	167	27	254	28	279	19	12	6	-95.7%	-68.4%
Physical Education	2,194	96	2,395	145	2,484	129	2,782	130	2,924	138	5.1%	6.2%
HLTH	546	15	507	18	657	12	609	18	634	24	4.1%	33.3%
PHED	1,508	81	1,753	127	1,679	117	1,773	112	1,967	114	10.9%	1.8%
SPMA	140	0	135	0	148	0	400	0	323	0	-19.3%	0.0%
Professional Development	12	1,539	6	1,515	6	1,662	3	1,014	48	1,467	1500.0%	44.7%
WPDC	12	1,539	6	1,515	6	1,662	3	1,014	48	1,467	1500.0%	44.7%
Visual & Perf. Arts	9,081	248	9,700	243	10,037	464	10,631	418	10,468	370	-1.5%	-11.5%
Art & Design	5,206	76	5,752	102	5,605	126	6,011	105	5,839	96	0.0%	0.0%
ARTE	145	3	186	21	151	36	182	22	153	33	-15.9%	50.0%
ARTH	1,152	27	1,341	30	1,374	15	1,524	12	1,401	6	-8.1%	-50.0%
ARTS	2,846	46	3,083	51	2,971	75	2,634	71	2,610	57	-0.9%	-19.7%
ARTT	471	0	482	0	493	0	558	0	461	0	-17.4%	0.0%
INDS	592	0	660	0	616	0	578	0	679	0	17.5%	0.0%
VCOM	N/A	N/A	N/A	N/A	N/A	N/A	535	0	535	0	0.0%	0.0%
CVPA	0	0	0	0	0	201	0	154	0	154	0.0%	0.0%
ARTA	N/A	N/A	N/A	N/A	0	198	0	154	0	154	0.0%	0.0%
VPAS	N/A	N/A	N/A	N/A	0	3	0	0	0	0	0.0%	0.0%
Dance/Theatre	1,791	6	1,895	3	2,228	3	2,147	0	2,011	0	-6.3%	0.0%
DANA	324	0	339	0	420	0	384	0	326	0	-15.1%	0.0%
DANT	351	6	375	3	416	0	449	0	401	0	-10.7%	0.0%
THED	N/A	N/A	N/A	N/A	N/A	N/A	47	0	0	0	-100.0%	0.0%
THRA	561	0	596	0	717	0	646	0	789	0	22.1%	0.0%
THRT	555	0	585	0	675	3	621	0	495	0	-20.3%	0.0%
Music	2,084	166	2,053	138	2,204	134	2,473	159	2,618	120	5.9%	-24.5%
MUSA	721	63	646	74	701	65	895	75	919	39	2.7%	-48.0%
MUST	1,363	103	1,407	64	1,503	69	1,578	84	1,699	81	7.7%	-3.6%
University College	1,382	0	1,334	0	1,464	0	1,679	0	2,060	0	22.7%	0.0%
ACAD	*	*	*	*	1,077	0	1,009	0	1,023	0	1.4%	0.0%
CISM	946	0	1,085	0	*	*	*	*	*	*	N/A	N/A
GNEB	405	0	207	0	378	0	654	0	1,002	0	53.2%	0.0%
HONR	31	0	42	0	9	0	16	0	35	0	118.8%	0.0%

NOTE: Credit Hours are by Course Level

CREDIT HOUR PRODUCTION BY DEPARTMENT
SPRING 2002 - SPRING 2006

UNIT/DEPARTMENT	SPRING 2002		SPRING 2003		SPRING 2004		SPRING 2005		SPRING 2006		05 TO 06 % DIFF.	
	UG	G	UG	G	UG	G	UG	G	UG	G	UG	G
Arts and Sciences	34,580	941	37,507	1,185	38,895	1,108	34,498	1,059	34,822	1,089	0.9%	2.8%
Biology	3,846	97	3,930	122	4,269	111	4,086	164	4,080	153	-0.1%	-6.7%
BIOL	3,720	97	3,930	122	4,269	111	4,086	164	4,080	153	-0.1%	-6.7%
SCIE	126										N/A	N/A
Chemistry	2,245	3	2,688	3	2,666	27	2,354	16	2,600	6	10.5%	-62.5%
CHEM	917	3	1,257	3	1,331	27	1,011	13	1,164	6	15.1%	-53.8%
GEOL	773		801		676		614	3	686		11.7%	N/A
PHYS	555		630		659		729		750		2.9%	N/A
English	5,389	114	5,670	205	5,931	177	3,628	210	3,743	141	3.2%	-32.9%
CRTW					27				1,095		N/A	N/A
ENGL	1,710	63	1,791	127	2,202	114	2,172	135	1,441	99	-33.7%	-26.7%
ENGE	27	39	36	33	51	12	42	9	39	12	-7.1%	33.3%
WRIT	3,652	12	3,843	45	3,651	51	1,414	66	1,168	30	-17.4%	-54.5%
History	3,534	132	4,083	96	3,657	117	2,977	99	2,502	99	-16.0%	0.0%
HIST	3,534	132	4,083	96	3,657	117	2,977	99	2,502	99	-16.0%	0.0%
Human Nutrition	980	167	1,385	164	1,139	129	1,304	120	1,478	185	13.3%	54.2%
NUTR	500	167	746	164	881	129	1,064	120	1,076	185	1.1%	54.2%
GEOG	480		639		258		240		402		67.5%	N/A
Mass Communication	1,341	0	1,211	0	1,609	3	1,411	6	1,328	0	-5.9%	-100.0%
MCOM	1,266		1,211		1,528	3	1,372	6	1,274		-7.1%	-100.0%
IMCO*	75				81		39		54		38.5%	N/A
Mathematics	3,539	9	3,702	48	3,825	42	2,498	33	3,408	3	36.4%	-90.9%
CTQR									1,011		N/A	N/A
MAED/MPDC	27		15	6	30	3	62	3	60	3	-3.2%	0.0%
MATH	3,512	9	3,687	42	3,795	39	2,436	30	2,337		-4.1%	-100.0%
Modern & Classical Lang.	3,124	60	3,664	39	3,872	30	3,898	18	3,880	48	-0.5%	166.7%
CHIN	24		24		32		8		64		700.0%	N/A
FREN	707	6	666		710		688	3	677	6	-1.6%	100.0%
GERM	180		182		211		186		165		-11.3%	N/A
ITAL	64		80		176		168		84		-50.0%	N/A
JAPN	52		72		52		40		72		80.0%	N/A
LATN	52		60		32		36		40		11.1%	N/A
MLAN						6	3				N/A	N/A
SPAN	2,045	54	2,580	39	2,659	24	2,769	15	2,778	42	0.3%	180.0%
Philosophy & Religion	1,142	0	1,055	0	1,056	0	1,023	0	1,326	9	29.6%	N/A
PHIL	674		614	3	687		669	3	627	6	-6.3%	100.0%
RELG	468		441	3	369		354		699	3	97.5%	100.0%
Political Science	2,471	12	2,405	12	2,452	15	2,601	15	2,138	9	-17.8%	-40.0%
PLSC	2,471	12	2,405	12	2,452	15	2,601	15	2,138	9	-17.8%	-40.0%
Psychology	2,243	299	2,477	382	2,979	373	3,007	339	2,729	358	-9.2%	5.6%
PSYC	2,243	299	2,477	382	2,979	373	3,007	339	2,729	358	-9.2%	5.6%
Sociology	2,797	12	3,320	45	3,479	12	3,727	0	3,716	6	-0.3%	100.0%
ANTH	631		1,012	3	1,216	3	1,298		1,358		4.6%	0.0%
GRNT			66		18		36		156		333.3%	N/A
SOCL	2,163	12	2,242	42	2,245	9	2,393		2,172	3	-9.2%	100.0%
WMST	3								30	3	100.0%	100.0%
Social Work	1,014	0	1,155	12	1,131	12	1,015	6	884	6	-12.9%	0.0%
CMVS	42		45		45		54		45		-16.7%	N/A
SCWK	972		1,110	12	1,086	12	961	6	839	6	-12.7%	0.0%
Speech	735	0	672	0	726	0	771	0	758	0	-1.7%	0.0%
SPCH	735		672		726		771		758		-1.7%	N/A
Other	180	36	90	57	104	60	198	33	252	66	27.3%	100.0%
AAMS	102		3		3		90		117		30.0%	N/A
ENVS	60		60		89		87		114		31.0%	N/A
INAS	18		27		12		21		21		N/A	N/A
LART		36		57		60		33		66	N/A	100.0%
University College	261	0	0	0	543	0	0	0	2,579	0	100.0%	0.0%
ACAD					33				22		100.0%	N/A
GNED	261				543				2508		100.0%	N/A
HONR	54		52		37		62		49		-21.0%	N/A

*Interdisciplinary Courses

NOTE: Credit Hours are by course level.

CREDIT HOUR PRODUCTION BY DEPARTMENT SPRING 2002 - SPRING 2006

UNIT/DEPARTMENT	SPRING 2002		SPRING 2003		SPRING 2004		SPRING 2005		SPRING 2006		05 TO 06 % DIFF.	
	UG	G	UG	G	UG	G	UG	G	UG	G	UG	G
Business Administration	11,402	1,626	11,340	1,641	10,915	1,659	11,005	1,719	11,135	1,404	1.2%	-18.3%
Account, Finance, & Econ.	4,273	471	4,410	471	3,936	588	3,771	522	3,888	435	3.1%	-16.7%
ACCT	1,540	210	1,449	255	1,488	321	1,461	264	1,422	252	-2.7%	-4.5%
ECON	2,001	111	2,205	132	1,803	120	1,611	84	1,707	51	6.0%	-39.3%
FINC	732	150	756	84	645	147	699	174	759	132	8.6%	-24.1%
Com. Sci. & Quan. Meth.	2,579	108	2,374	150	2,729	144	2,383	108	2,360	63	-1.0%	-41.7%
CSCI	1,541	39	1,438	48	1,748	30	1,492	24	1,475	18	-1.1%	-25.0%
QMTH	1,038	69	936	102	981	114	891	84	885	45	-0.7%	-46.4%
Management & Marketing	4,550	1,047	4,556	1,020	4,250	927	4,851	1,089	4,887	906	0.7%	-16.8%
BADM	673	438	769	330	712	285	1,115	456	957	306	-14.2%	-32.9%
HLAD/HLISM	216		219		237		141				-100.0%	0.0%
IMCO*	75				81		39		54		38.5%	N/A
MGMT	2,385	504	2,208	534	2,025	504	2,277	480	2,478	474	8.8%	-1.3%
MKTG	1,113	105	1,206	156	1,137	138	1,074	153	1,179	126	9.8%	-17.6%
SPMA*	88		154		58		205		219		6.8%	N/A
Education	7,806	1,875	8,293	2,270	8,964	2,088	9,016	2,025	8,390	1,845	-6.9%	-8.9%
Center for Pedagogy	3,354	822	3,733	1,133	3,927	1,341	3,756	897	3,623	990	-3.5%	10.4%
EDUC	3,354	549	3,733	644	3,927	759	3,756	501	3,623	567	-3.5%	13.2%
EDLD		273		489		582		396		423	N/A	6.8%
Curriculum & Instruction	2,155	522	2,072	513	2,274	336	2,290	552	1,850	378	-19.2%	-31.5%
CSDV		261		348		426		396		348	N/A	-12.1%
EDCI	192	90	180	108	276	72	267	141	333	120	24.7%	-14.9%
ECED	223		264		285		285	30	291		2.1%	-100.0%
ELEM	468	21	420		396		394		324		-17.8%	0.0%
READ	723	228	722	189	665	183	696	249	665	156	-4.5%	-37.3%
SPED	267	177	159	216	243	81	225	126	237	99	5.3%	-21.4%
VCED	282	6	327		409		423	6		3	-100.0%	-50.0%
Physical Education	2,297	147	2,488	114	2,763	93	2,970	90	2,917	123	-1.8%	36.7%
HLTH/WELL	522	18	489	24	537	21	576	21	674	27	17.0%	28.6%
PHED	1,687	129	1,845	90	2,168	72	2,189	69	2,024	96	-7.5%	39.1%
SPMA*	88		154		58		205		219		6.8%	N/A
Other		384		510		318		486		354	N/A	-27.2%
WSDT/WPDC		384		510		318		486		354	N/A	-27.2%
Visual & Performing Arts	8,160	244	9,309	232	9,846	491	8,982	293	8,766	256	-2.4%	-12.6%
Art & Design	4,646	87	5,231	105	5,452	315	4,683	123	4,661	75	-0.5%	-39.0%
ARTA						187					0.0%	0.0%
ARTE	186	15	180	24	195	24	225	33	156	6	-30.7%	-81.8%
ARTH	1,137	15	1,266	24	1,482	42	1,158	15	1,182	6	2.1%	-60.0%
ARTS	2,498	54	2,907	57	2,804	62	2,295	75	2,177	63	-5.1%	-16.0%
ARTT	456		404		368		345		339		-1.7%	N/A
INDS	369	3	474		603		660		807		22.3%	N/A
Dance/Theatre	1,571		2,077		2,111		2,028	3	1,829		-9.8%	-100.0%
DANA	261		381		314		284		244		-14.1%	N/A
DANT	305		375		452		378		400		5.8%	N/A
THRA	586		675		711		727		700		-3.7%	N/A
THRT	419		646		634		639	3	485		-24.1%	N/A
Music	1,943	157	2,001	127	2,283	176	2,271	167	2,276	178	0.2%	6.6%
MUSA	638	58	642	49	893	70	847	73	868	66	2.5%	-9.6%
MUST	1,305	99	1,359	78	1,390	106	1,424	94	1,408	112	-1.1%	19.1%
Other	0	0	0	0	0	0	0	0	0	3	0.0%	100.0%
VPAS										3	N/A	100.0%

NOTE: Credit Hours are by course level.

**CREDIT HOUR PRODUCTION BY DEPARTMENT BY COURSE LEVEL
SUMMER 2002 - SUMMER 2005**

DEPARTMENT	SUM 2002		SUM 2003		SUM 2004		SUM 2005		04 TO 05 % DIFF.	
	UG	G	UG	G	UG	G	UG	G	UG	G
Arts and Sciences										
Biology	656	14	749	0	511	14	534	0	4.5%	-100.0%
BIOL	417	14	528		403	14	388		-3.7%	-100.0%
SCIE	239		221		108		146		35.2%	0.0%
Chemistry	775	0	565	0	720	0	416	0	-42.2%	0.0%
CHEM	487		326		446		284		-36.3%	0.0%
GEOL	92		80		52		45		-13.5%	0.0%
PHSC									0.0%	0.0%
PHYS	196		159		222		87		-60.8%	0.0%
English	729	135	621	174	732	171	405	156	-44.7%	-8.8%
ANTH	186		123		132				-100.0%	0.0%
ENGL	243	45	213	36	276	24	204	36	-26.1%	50.0%
WRIT	300	90	285	138	324	147	201	120	-38.0%	-18.4%
History	198	51	304	48	285	51	291	39	2.1%	-23.5%
HIST	198	51	304	48	285	51	291	39	2.1%	-23.5%
Human Nutrition	269	79	398	100	225	62	309	57	37.3%	-8.1%
NUTR	83	79	206	100	171	62	243	57	42.1%	-8.1%
GEOG	186		192		54		66		22.2%	0.0%
Mass Communication	97	0	150	0	97	51	74	39	-23.7%	-23.5%
MCOM	97		150		97	51	74	39	-23.7%	-23.5%
Mathematics	708	18	666	48	651	75	423	21	-35.0%	-72.0%
MAED/MPDC				45		57			0.0%	-100.0%
MATH	708	18	666	3	651	18	423	21	-35.0%	16.7%
Modern & Classical Lang.	280	135	344	96	518	30	331	12	-36.1%	-60.0%
FREN	40		60		32		48		50.0%	0.0%
ITAL	9								0.0%	
MLAN	90	48	30	12	120	6	54	12	-55.0%	
SPAN	141	87	254	84	366	24	229		-37.4%	-100.0%
Philosophy & Religion	309		198		138	0	141	0	2.2%	0.0%
PHIL	132		138		108		42		-61.1%	0.0%
RELG	177		60		30		99		230.0%	0.0%
Political Science	258	0	257	6	210	3	141	0	-32.9%	-100.0%
PLSC	258		257	6	210	3	141		-32.9%	-100.0%
Psychology	181	249	132	261	198	411	214	408	8.1%	-0.7%
PSYC	181	249	132	261	198	411	214	408	8.1%	-0.7%
Sociology	231	15	350	30	370	3	27	3	-92.7%	0.0%
ANTH							90		100.0%	
GRNT			21		36		27		-25.0%	
SOCL	231	15	329	30	334	3		3	-100.0%	0.0%
Social Work	169	9	197	0	206	3	142	6	-31.1%	100.0%
SCWK	169	9	197		206	3	142	6	-31.1%	100.0%
Speech	168	0	180	0	192	0	139	0	-27.6%	0.0%
SPCH	168		180		192		139		-27.6%	0.0%
Other	3	0	0	0	9	0	0	0	-100.0%	0.0%
AAMS					9				-100.0%	
INAS	3								0.0%	0.0%
University College	0	0	0	0	12	0	0	0	-100.0%	
GNED					12				100.0%	0.0%

**CREDIT HOUR PRODUCTION BY DEPARTMENT BY COURSE LEVEL
SUMMER 2002 - SUMMER 2005**

DEPARTMENT	SUM 2002		SUM 2003		SUM 2004		SUM 2005		04 TO 05 % DIFF.	
	UG	G	UG	G	UG	G	UG	G	UG	G
Business Administration										
Account, Finance, & Econ.	579	315	510	423	348	336	423	234	21.6%	-30.4%
ACCT	189	168	189	156	129	123	168	132	30.2%	7.3%
ECON	246	81	201	150	129	126	132	60	2.3%	-52.4%
FINC	144	66	120	117	90	87	123	42	36.7%	-51.7%
Com. Sci. & Quan.Meth.	260	87	213	114	156	87	129	99	-17.3%	13.8%
CSCI	86	6	48	21	54	9	27		-50.0%	-100.0%
QMTH	174	81	165	93	102	78	102	99	0.0%	26.9%
Management & Marketing	813	390	547	480	616	474	453	390	-26.5%	-17.7%
BADM	32	36	39	51	63	111	57	147	-9.5%	32.4%
HLAD/HLSM	42		33		42		42		0.0%	0.0%
MGMT	537	354	345	429	312	363	264	243	-15.4%	-33.1%
MKTG	96		72		123		90		-26.8%	0.0%
SPMA	106		58		76				-100.0%	0.0%
Education										
Center for Pedagogy	195	459	178	519	94	381	78	396	-17.0%	3.9%
EDUC	195	459	178	519	94	381	78	396	-17.0%	3.9%
Curriculum & Instruction	319	591	387	621	309	558	262	471	-15.2%	-15.6%
ECED	54		74	27	54	60	21		-61.1%	-100.0%
EDCI									0.0%	0.0%
EDMD									0.0%	0.0%
ELEM	72	132	54	63	48	42		51	-100.0%	21.4%
READ	186	321	235	291	186	303	194	261	4.3%	-13.9%
SCED									0.0%	0.0%
SPED		126		234		153		153	0.0%	0.0%
VCED	7	12	24	6	21		47	6	123.8%	100.0%
Counseling & Leadership	0	465	0	525	0	573	0	558	0.0%	-2.6%
ADSP									0.0%	0.0%
CSDV		309		339		360		321	0.0%	-10.8%
EDLD		156		186		213		237	0.0%	11.3%
Physical Education	285	1,047	183	1,272	102	630	142	390	39.2%	-38.1%
HLTH	99	6	90	3	69	3	81	6	17.4%	100.0%
PHED	77	15	35	3	33	3	61	9	84.8%	200.0%
SPMA	106		58						0.0%	0.0%
WPDC	3	1,026		1,266		624		375	0.0%	-39.9%
Visual & Performing Arts										
Art & Design	189	24	316	60	354	124	306	27	-13.6%	-78.2%
ARTA						61			0.0%	-100.0%
ARTE		18	54	36	57	33	45	21	-21.1%	-36.4%
ARTH	51	6	102	12	87	15	87	3	0.0%	-80.0%
ARTS	132	0	159	12	171	15	141	3	-17.5%	-80.0%
ARTT					39		15		-61.5%	0.0%
INDS	6		1				18		100.0%	0.0%
Dance/Theatre	65	0	61	0	32	0	45	0	40.6%	0.0%
DANA									0.0%	0.0%
DANT	21		21		4		15		275.0%	0.0%
THRA	20		18		25		15		-40.0%	0.0%
THRT	24		22		3		15		400.0%	0.0%
Music	227	78	158	84	153	96	146	82	-4.6%	-15.1%
MUSA	8	9	11	9	12	12	15	6	25.0%	-54.2%
MUST	219	69	147	75	141	84	131	76	-7.1%	-9.5%
Other	0	114	0	150	0	255	0	273	0.0%	7.1%
VPAS		114		150		255		273	0.0%	7.1%

Average Number of Student Credit Hours Taught by Full-Time Teaching Faculty*
(Performance Funding Indicator 3B)

COLLEGE/DEPARTMENT	FALL 2001		FALL 2002		FALL 2003		FALL 2004		FALL 2005		5-YEAR AVERAGE	
	headcount	avg. hrs.	headcount	avg. hrs.	headcount	avg. hrs.	headcount	avg. hrs.	headcount	avg. hrs.	headcount	avg. hrs.
ARTS & SCIENCES	130	237	131	246	135	235	132	220	132	204	132	229
Biology	13	176	14	165	14	172	14	155	14	136	14	161
Chemistry and Physics	13	168	14	208	14	181	15	162	15	145	14	173
English	22	216	20	239	24	191	21	199	21	192	22	208
History	10	306	11	365	10	381	9	379	10	326	10	351
Human Nutrition	6	201	5	201	5	212	6	165	6	167	6	189
Mass Communication	14	325	7	185	13	309	7	179	7	176	10	235
Mathematics	6	208	11	357	6	215	13	293	12	281	10	271
Modern and Classical Lang.	9	179	9	122	8	206	5	174	5	136	7	163
Philosophy & Religious Studies	3	360	3	276	3	290	3	305	5	274	3	301
Political Science	6	330	8	319	9	289	10	232	8	215	8	277
Psychology	13	226	13	224	13	208	13	208	13	202	13	214
Social Work	5	170	6	195	6	188	6	149	6	134	6	167
Sociology	7	347	7	402	7	347	7	330	7	302	7	346
Speech	3	246	3	210	3	237	3	276	3	197	3	233
BUSINESS ADMINISTRATION	39	274	40	261	40	273	36	306	43	261	40	275
Accounting, Finance & Econ.	15	284	16	249	17	247	15	244	17	260	16	257
Computer Science & Quan. Meth.	9	304	10	256	10	302	9	360	10	277	10	300
Management & Marketing	15	247	14	277	13	284	12	342	16	251	14	280
EDUCATION	39	189	39	203	44	179	42	194	48	178	42	188
Center for Pedagogy	7	104	10	257	13	210	13	245	16	185	12	179
Counseling and Leadership	14	162	6	91	6	122	-	-	-	-		
Curriculum and Instruction	10	260	14	204	16	164	19	154	21	161	16	189
Health and Physical Education	8	222	9	216	9	199	10	201	11	199	9	207
VISUAL & PERFORMING ARTS	44	143	44	138	45	137	45	130	41	133	44	136
Art and Design	20	156	20	171	22	153	20	139	21	158	21	155
Music	16	99	15	87	14	83	17	82	13	91	15	89
Theatre And Dance	8	197	9	147	9	183	8	208	7	133	8	174
TOTAL	252	219	254	223	264	215	255	212	264	197	258	213

*NOTE: For this performance indicator full-time teaching faculty is defined as full-time, unclassified faculty at the rank of instructor, assistant professor, associate professor, professor at institutions, who teach at least three credit hours, measured in the fall semester. Unclassified employees who hold positions above department chair, such as deans, vice presidents, and presidents are excluded.

**DEGREES CONFERRED
BY LEVEL & SEMESTER
1995 - 2005**

LEVEL/SEMESTER	95-96	96-97	97-98	98-99	99-00	00-01	01-02	02-03	03-04	04-05
Undergraduate	685	707	713	688	765	724	770	835	870	900
Fall	208	209	227	202	261	217	250	279	290	305
Spring	398	410	408	391	413	428	425	472	507	508
Summer	79	88	78	95	91	79	95	84	73	87
Graduate	255	264	264	269	260	219	279	230	287	264
Fall	79	72	65	67	75	77	90	58	94	72
Spring	125	128	132	124	104	92	110	101	119	133
Summer	51	64	67	78	81	50	79	71	74	59
Total UG & G	940	971	977	957	1,025	943	1,049	1,065	1,157	1,164
Fall	287	281	292	269	336	294	340	337	384	377
Spring	523	538	540	515	517	520	535	573	626	641
Summer	130	152	145	173	172	129	174	155	147	146

**GRADUATE DEGREES CONFERRED
BY DEGREE PROGRAM & SEMESTER
2000 - 2005**

DEGREE PROGRAM	2000	2001	2001	2001	2002	2002	2002	2003	2003	2003	2004	2004	2004	2005	2005
	FALL	SPR	SUM	FALL	SPR	SUM	FALL	SPR	SUM	FALL	SPR	SUM	FALL	SPR	SUM
ARTS & SCIENCES	14	33	3	14	26	12	12	27	9	12	33	2	5	32	1
M.S. Biology	1	2	1	1		1	1	3	1	3	2	0	0	6	1
M.A. English		5		2	3	1		1	2	0	4	0	1	3	0
M.S. Human Nutrition	4	6		7	1	1	2	2	1	5	1	0	3	3	0
M.A. History			1		3	2	2	3	2	0	2	1	1	2	0
M.L.A. Liberal Arts	6	3		1	3		6	2	0	0	5	0	0	1	0
MMTH Mathematics	2	3							0	1	3	1			
M.S. School Psychology		5			6	2		8	0	0	6	0	0	8	0
S.S.P. School Psychology		9			7			7	0	0	9	0	0	8	0
M.A. Spanish	1		1	3	3	5	1	1	3	3	1	0	0	1	0
BUSINESS ADMINISTRATION	21	30	21	27	43	22	26	31	18	42	34	29	3	16	0
M.B.A. Business Administration	21	17	21	25	22	19	26	19	18	39	23	29			
Executive MBA		13		2	21	3		10	0	1	8	0	0	15	0
P.B. Cert. Software Engineering								2	0	2	3	0	3	1	0
M.S. Software Engineering													3	1	0
CMBA Coastal													30	30	22
EDUCATION	39	23	23	48	37	39	19	34	44	34	45	41	29	48	27
M.S. Business Education															
M.A.T. Business Education							1	1					1	3	0
M. Ed. Counseling & Development	18		1	16	15	4		9	3	0	14	3	1	25	2
Ed. S. Curriculum and Instruction									0	4	0	1	4	0	0
M. Ed. Educ. Adm. and Supervision*	4	5	9	15	4	7	4	3	6	10	9	8	16	13	4
Ed. S. Educational Administration	2			2	1										
M. Ed. Educational Media															
M. Ed. Elementary Education	1		3	1	5	1		1	3	0	2	1			
M.S. Family Consumer Science															
M. Ed. Middle Level Education							6	3	0	11	0	0			
M.A.T. Music Education (K-12)					3		1	1	1				0	2	0
M.A.T. Physical Education (K-12)	2	2		1			3		0	1	0	0	0	1	0
M.S. Physical Education	1		1	3		1		2	2				2	1	2
M. Ed. Reading	2	1	8	3		23	3	2	23	4	3	24	2	3	18
M. Ed. Secondary Education	2	1		2	1	1		3	2	0	0	1			
M.A.T. Secondary Education	5	11	1	1	7	1	1	9	2	3	14	2	1	0	0
M. Ed. Special Education	2	3		4	1	1			2	1	3	1	2	0	1
M.A.T. Teacher Education- ART													0	2	0
M.A.T. Teacher Education- BIOL													0	1	0
M.A.T. Secondary Education-ENGL													1	2	1
M.A.T. Secondary Education-SOC STUD													0	4	0
M.A.T. Secondary Education-SPAN													0	1	0
VISUAL & PERFORMING ARTS	3	6	3	1	4	6	1	9	0	3	5	2	4	7	6
M.F.A Art and Design		1			2			2	0	0	0	0	2	2	0
M.A. Art Education	1		1			1			0	2	1	1	1	0	0
M.A.T. Art Education (K-12)	1	1							0	0	2	0			
M.M. Conducting						1	1	2	0	0	1	1	0	4	3
M.M.E. Music Education		1	2		1	4			0	0	0	0	0	0	1
M.M. Music Performance	1	3		1	1			5	0	1	1	0	1	1	2
TOTAL	77	92	50	90	110	79	58	101	71	91	117	74	41	103	34

*M.Ed. in Educational Admin. changed name to M.Ed. Educational Leadership in Fall 1999

**UNDERGRADUATE DEGREES CONFERRED
BY DEGREE PROGRAM & SEMESTER
2001 - 2005**

	2001	2002	2002	2002	2003	2003	2003	2004	2004	2004	2005	2005
DEGREE PROGRAM	FALL	SPR	SUM	FALL	SPR	SUM	FALL	SPR	SUM	FALL	SPR	SUM
ARTS & SCIENCES	103	187	38	107	200	42	120	220	32	132	236	37
B.S. Biology	9	28	3	6	26	5	9	25	5	16	31	4
B.S. Chemistry	4	7	1	5	3	0	1	4	0	1	4	1
B.A. Economics								1	0	1	2	2
B.A. English	6	10	1	6	15	1	9	12	0	4	16	2
B.A. Environmental Science/Studies								2	1	2	1	1
B.S. Environmental Science										2	1	0
B.S. Human Nutrition	1	6	1	6	2	0	2	2	0	6	4	0
Certificate in Gerontology							3	2	0	0	1	0
B.S. Integrated Marketing Comm.	7	10	3	10	17	2	11	26	2	16	19	0
B.A. History	10	14	4	14	17	5	8	22	2	9	22	2
B.A. Mass Communication	8	15	3	8	11	0	11	15	3	11	23	1
B.A. Communication Disorders	5	12	1	7	12	1	3	11	1	4	11	3
B.A. Mathematics	0	2	0	1	1	1	1	6	0	2	2	0
B.S. Mathematics	1	1	1	0	7	0	2	4	0	0	2	0
B.S. Medical Technology	1	0	2	0	0	1	0	0	0	0	0	0
B.A. Modern Languages	2	2	1	1	4	0	2	5	0	6	6	1
B.A. Philosophy & Religion	0	3	1	2	4	2	0	6	0	0	2	1
B.A. Political Science	13	17	3	8	30	3	11	14	2	10	19	3
B.A. Psychology	15	24	4	16	23	7	23	33	6	17	36	3
B.S. Science Communication	2	3	0	0	0	0	0	2	0	0	1	0
B.S.W. Social Work	10	21	5	8	13	11	11	16	5	8	18	8
B.A. Sociology	9	12	4	9	15	3	13	12	5	17	15	5
BUSINESS ADMINISTRATION	66	104	28	94	93	21	83	111	15	83	75	25
B.S. Business Administration	61	99	26	90	90	20	77	105	15	78	69	22
B.A. Economics								1	0	1	2	2
B.S. Computer Science	5	5	2	4	3	1	6	5	0	4	4	1
EDUCATION	39	85	14	50	109	9	53	103	15	57	95	15
B.S. Business Education	0	0	0	2								
B.S. Early Childhood Education	7	13	1	8	24	2	11	30	3	11	26	1
B.S. Elementary Education	9	33	0	16	45	2	14	39	5	14	29	2
B.S. Family Consumer Sciences	9	11	5	6	6	1	13	12	5	13	11	9
B.S. Physical Education	2	11	1	10	8	2	3	14	0	6	6	1
B.S. Special Education	7	6	1	4	14	0	3	2	1	7	14	0
B.S. Sport Management	5	11	6	4	12	2	9	6	1	6	9	2
VISUAL & PERFORMING ARTS	42	46	15	28	69	12	37	76	11	34	96	12
B.A. Art	6	6	2	4	8	5	4	17	5	7	11	4
B.A. Art History	0	2	1	1	5	0	2	5	0	2	1	0
B.F.A. Art	22	18	2	15	24	3	22	25	3	14	36	5
B.A. Dance	0	6	3	0	8	0	1	9	0	4	6	0
B.A. Music	2	3	1	3	6	2	1	0	0	2	5	0
B.M.E. Music Education (Choral)	1	1	1	1	2	0	0	5	0	1	4	0
B.M.E. Music Education (Instrumental)	2	2	2	0	3	1	1	4	0	1	4	0
B.M. Music Performance	0	0	2	0	4	1	1	1	1	0	9	2
B.A. Theatre	9	8	1	4	9	0	5	10	2	3	20	1
TOTAL	250	422	95	279	471	84	293	510	73	306	502	89

**WINTHROP GRADE POINT AVERAGES
BY LEVEL & SEMESTER
1996 - 2006**

	1996-97		1997-98		1998-99		1999-00		2000-01	
	FALL	SPRING	FALL	SPRING	FALL	SPRING	FALL	SPRING	FALL	SPRING
Undergraduate Avg GPA	2.86	2.85	2.92	2.87	2.90	2.89	2.89	2.87	2.96	2.92
Freshmen Avg GPA	2.67	2.53	2.72	2.48	2.69	2.52	2.72	2.51	2.75	2.64
Graduate Avg GPA	3.60	3.63	3.63	3.66	3.62	3.67	3.65	3.65	3.63	3.63

	2001-02		2002-03		2003-04		2004-05		2005-06	
	FALL	SPRING	FALL	SPRING	FALL	SPRING	FALL	SPRING	FALL	SPRING
Undergraduate Avg GPA	2.94	2.93	2.98	2.94	2.96	2.91	2.92	2.94	2.92	N/A
Freshmen Avg GPA	2.78	2.59	2.87	2.72	2.82	2.64	2.83	2.58	2.86	N/A
Graduate Avg GPA	3.68	3.59	3.63	3.63	3.63	3.71	3.63	3.64	3.66	N/A

**COMPARISON OF FALL 2004 AND FALL 2005
TOTAL FULL-TIME FACULTY
TENURED, DOCTORATE, AND TERMINAL DEGREE**

COLLEGE/DEPARTMENT	TENURED				TERMINAL DEGREE				DOCTORATE DEGREE			
	2004		2005		2004		2005		2004		2005	
	#	% OF FT	#	% OF FT	#	% OF FT	#	% OF FT	#	% OF FT	#	% OF FT
ARTS & SCIENCES	80	57.6%	83	58.5%	116	83.5%	124	87.3%	116	83.5%	115	81.0%
Biology	9	64.3%	10	71.4%	13	92.9%	13	92.9%	13	92.9%	13	92.9%
Chemistry & Physics	8	50.0%	7	46.7%	15	93.8%	14	93.3%	15	93.8%	14	93.3%
English	10	43.5%	11	50.0%	14	60.9%	16	72.7%	14	60.9%	14	63.6%
History	6	60.0%	7	70.0%	10	100.0%	10	100.0%	10	100.0%	10	100.0%
Human Nutrition	3	42.9%	3	50.0%	5	71.4%	3	50.0%	5	71.4%	3	50.0%
Mass Communication	5	71.4%	4	57.1%	4	57.1%	5	71.4%	4	57.1%	5	71.4%
Mathematics	6	46.2%	7	58.3%	10	76.9%	9	75.0%	10	76.9%	9	75.0%
Modern & Classical Lang.	4	80.0%	4	80.0%	4	80.0%	5	100.0%	4	80.0%	5	100.0%
Phil. and Religious Studies	1	33.3%	1	20.0%	3	100.0%	5	100.0%	3	100.0%	5	100.0%
Political Science	5	50.0%	5	55.6%	9	90.0%	9	100.0%	9	90.0%	9	100.0%
Psychology	11	73.3%	11	61.1%	15	100.0%	17	94.4%	15	100.0%	16	88.9%
Social Work	5	83.3%	6	85.7%	6	100.0%	7	100.0%	6	100.0%	4	57.1%
Sociology	5	71.4%	5	55.6%	6	85.7%	9	100.0%	6	85.7%	6	66.7%
Speech	2	66.7%	2	66.7%	2	66.7%	2	66.7%	2	66.7%	2	66.7%
BUSINESS ADMIN.	22	46.8%	25	48.1%	33	70.2%	40	76.9%	33	70.2%	37	71.2%
Acc., Finance & Econ.	9	60.0%	10	52.6%	12	80.0%	15	78.9%	12	80.0%	13	68.4%
Comp. Sci. & Quant. Meth.	4	33.3%	4	36.4%	8	66.7%	9	81.8%	8	66.7%	9	81.8%
Management & Marketing	9	45.0%	11	50.0%	13	65.0%	16	72.7%	13	65.0%	15	68.2%
EDUCATION	19	36.5%	16	29.6%	46	88.5%	42	77.8%	46	88.5%	35	64.8%
Center for Pedagogy	8	47.1%	5	29.4%	16	94.1%	16	94.1%	16	94.1%	16	94.1%
Curriculum & Instruction	5	29.4%	8	30.8%	15	88.2%	16	61.5%	15	88.2%	12	46.2%
Health & Physical Edu.	3	27.3%	3	27.3%	8	72.7%	10	90.9%	8	72.7%	7	63.6%
VISUAL & PERF. ARTS	26	55.3%	28	58.3%	33	70.2%	34	70.8%	18	38.3%	15	31.3%
Art & Design	12	57.1%	13	56.5%	14	66.7%	16	69.6%	5	23.8%	3	13.0%
Music	11	64.7%	12	70.6%	12	70.6%	12	70.6%	12	70.6%	11	64.7%
Theatre and Dance	3	33.3%	3	37.5%	7	77.8%	6	75.0%	1	11.1%	1	12.5%
LIBRARY	8	61.5%	8	61.5%	11	84.6%	11	84.6%	1	7.7%	1	7.7%
OTHER			5	62.5%			6	75.0%			6	75.0%
TOTAL	155	51.8%	165	52.1%	239	79.9%	257	81.1%	214	71.6%	209	65.9%

VI-2 SOURCE: INSTITUTIONAL RESEARCH

**COMPARISON OF FALL 2004 AND FALL 2005
FULL-TIME INSTRUCTIONAL FACULTY
TENURED, DOCTORATE, AND TERMINAL DEGREE**

COLLEGE/DEPARTMENT	TENURED				TERMINAL DEGREE				DOCTORATE DEGREE			
	2004		2005		2004		2005		2004		2005	
	#	% OF FT Instr	#	% OF FT Instr	#	% OF FT Instr	#	% OF FT Instr	#	% OF FT	#	% OF FT Instr
ARTS & SCIENCES	75	56.8%	80	59.3%	110	83.3%	118	87.4%	110	83.3%	108	80.0%
Biology	9	64.3%	10	71.4%	13	92.9%	13	92.9%	13	92.9%	13	92.9%
Chemistry & Physics	7	46.7%	7	46.7%	14	93.3%	14	93.3%	14	93.3%	14	93.3%
English	9	42.9%	10	47.6%	13	61.9%	15	71.4%	13	61.9%	13	61.9%
History	5	55.6%	7	70.0%	9	100.0%	10	100.0%	9	100.0%	10	100.0%
Human Nutrition	2	33.3%	3	50.0%	4	66.7%	3	50.0%	4	66.7%	3	50.0%
Mass Communication	5	71.4%	4	57.1%	4	57.1%	5	71.4%	4	57.1%	5	71.4%
Mathematics	6	46.2%	7	58.3%	10	76.9%	9	75.0%	10	76.9%	9	75.0%
Modern & Classical Lang.	4	80.0%	4	80.0%	4	80.0%	5	100.0%	4	80.0%	5	100.0%
Phil. and Religious Studies	1	33.3%	1	20.0%	3	100.0%	5	100.0%	3	100.0%	5	100.0%
Political Science	5	50.0%	5	55.6%	9	90.0%	9	100.0%	9	90.0%	9	100.0%
Psychology	10	76.9%	10	71.4%	13	100.0%	14	100.0%	13	100.0%	12	85.7%
Social Work	5	83.3%	5	83.3%	6	100.0%	6	100.0%	6	100.0%	3	50.0%
Sociology	5	71.4%	5	62.5%	6	85.7%	8	100.0%	6	85.7%	5	62.5%
Speech	2	66.7%	2	66.7%	2	66.7%	2	66.7%	2	66.7%	2	66.7%
BUSINESS ADMIN.	20	55.6%	24	55.8%	31	86.1%	37	86.0%	31	86.1%	34	79.1%
Acc., Finance & Econ.	9	60.0%	10	58.8%	12	80.0%	14	82.4%	12	80.0%	12	70.6%
Comp. Sci. & Quant. Meth.	4	44.4%	4	40.0%	8	88.9%	9	90.0%	8	88.9%	9	90.0%
Management & Marketing	7	58.3%	10	62.5%	11	91.7%	14	87.5%	11	91.7%	13	81.3%
EDUCATION	16	38.1%	16	33.3%	38	90.5%	40	83.3%	38	90.5%	33	68.8%
Center for Pedagogy	6	46.2%	5	31.3%	13	100.0%	15	93.8%	13	100.0%	15	93.8%
Curriculum & Instruction	5	31.3%	8	38.1%	14	87.5%	15	71.4%	14	87.5%	11	52.4%
Health & Physical Edu.	3	30.0%	3	27.3%	8	80.0%	10	90.9%	8	80.0%	7	63.6%
VISUAL & PERF. ARTS	24	53.3%	26	59.1%	31	68.9%	31	70.5%	16	35.6%	14	31.8%
Art & Design	11	55.0%	13	59.1%	13	65.0%	15	68.2%	4	20.0%	3	13.6%
Music	11	64.7%	11	73.3%	12	70.6%	11	73.3%	12	70.6%	10	66.7%
Theatre and Dance	2	25.0%	2	28.6%	6	75.0%	5	71.4%	0	0.0%	1	14.3%
TOTAL	135	52.9%	146	54.1%	210	82.4%	226	83.7%	195	76.5%	189	70.0%

VI-3 SOURCE: INSTITUTIONAL RESEARCH

Full Time University Employees by Classification Fall 2005

Classification	Male	Female	Black	White	All Other	Total
Executive/Admin/Managerial	19	20	1	38	0	39
Faculty	144	128	14	240	18	272
Other Professionals	64	120	26	151	7	184
Technical/Paraprofessionals	37	37	19	55	0	74
Clerical/Secretarial	0	86	21	64	1	86
Skilled Crafts	35	4	7	32	0	39
Service/Maintenance	37	48	52	30	3	85
Total:	336	443	140	610	29	779

* Headcount as of November 1

**Profile of Full-Time Instructional Faculty
Fall 2005**

COLLEGE/DEPARTMENT	Total Headcount	% Professors	% Associate Professors	% Assistant Professors	% Instructors	% Tenured	% with Terminal Degree	% Female	% Minority
ARTS & SCIENCES	135	28%	30%	27%	14%	59%	87%	45%	13%
Biology	14	43%	21%	29%	7%	71%	93%	50%	7%
Chemistry and Physics	15	33%	13%	40%	13%	47%	93%	47%	20%
English	21	19%	29%	24%	29%	48%	71%	71%	5%
History	10	10%	60%	30%	0%	70%	100%	20%	10%
Human Nutrition	6	17%	33%	0%	50%	50%	50%	67%	0%
Mass Communication	7	14%	43%	29%	14%	57%	71%	29%	14%
Mathematics	12	33%	17%	25%	25%	58%	75%	42%	25%
Modern and Classical Lang.	5	20%	60%	0%	20%	80%	100%	60%	60%
Philosophy & Religious Studies	5	20%	0%	80%	0%	20%	100%	20%	0%
Political Science	9	33%	22%	44%	0%	56%	100%	22%	11%
Psychology	14	21%	50%	29%	0%	71%	100%	36%	7%
Social Work	6	33%	67%	0%	0%	83%	100%	50%	17%
Sociology	8	63%	0%	25%	13%	63%	100%	38%	13%
Speech	3	33%	33%	0%	33%	67%	67%	67%	0%
BUSINESS ADMINISTRATION	43	30%	47%	21%	2%	56%	86%	28%	19%
Accounting, Finance & Econ.	17	29%	65%	6%	0%	59%	82%	12%	24%
Computer Science & Quan. Meth.	10	30%	40%	20%	10%	40%	90%	30%	20%
Management & Marketing	16	31%	31%	38%	0%	63%	88%	44%	13%
EDUCATION	48	19%	21%	44%	17%	33%	83%	71%	10%
Center for Pedagogy	16	13%	25%	56%	6%	31%	94%	63%	13%
Curriculum and Instruction	21	24%	19%	29%	29%	38%	71%	76%	10%
Health and Physical Education	11	18%	18%	55%	9%	27%	91%	73%	9%
VISUAL & PERFORMING ARTS	44	34%	32%	25%	9%	59%	70%	43%	5%
Art and Design	22	27%	32%	36%	5%	59%	68%	36%	9%
Music	15	53%	20%	7%	20%	73%	73%	33%	0%
Theatre And Dance	7	14%	57%	29%	0%	29%	71%	86%	0%
TOTAL	270	28%	31%	29%	12%	54%	84%	47%	12%

**PART-TIME INSTRUCTIONAL FACULTY AND FTE
BY DEPARTMENT
FALL 2001 - FALL 2005**

COLLEGE/DEPARTMENT	FALL 2001		FALL 2002		FALL 2003		FALL 2004		FALL 2005		DIFF 00-04	
	#	FTE	#	FTE	#	FTE	#	FTE	#	FTE	#	FTE
ARTS & SCIENCES	57	27.41	62	31.90	72	36.45	98	49.71	103	60.21	46	32.80
Biology	6	2.66	6	2.66	6	2.91	12	6.47	13	10.50	7	7.84
Chemistry and Physics	4	1.33	4	1.16	5	1.66	4	1.66	5	4.50	1	3.17
English	14	6.81	14	8.72	17	10.54	20	11.70	17	11.50	3	4.69
History	6	2.49	4	1.00	3	1.00	5	1.74	3	1.25	-3	-1.24
Human Nutrition	1	0.25	3	1.00	3	1.08	6	1.91	9	3.00	8	2.75
Liberal Arts	-	-	-	-	-	-	-	-	1	0.50	-	-
Mass Communication	1	0.50	2	0.58	2	0.50	1	0.50	2	0.50	1	0.00
Mathematics	1	0.33	4	1.74	4	2.49	4	2.24	4	3.00	3	2.67
Modern and Classical Languages	11	8.30	15	11.54	15	9.63	21	13.78	21	15.63	10	7.33
Philosophy and Religious Studies	0	0.00	1	0.25	1	0.25	1	0.25	0	0.00	0	0.00
Political Science	5	2.49	2	0.75	3	0.58	5	1.74	5	2.25	0	-0.24
Psychology	4	1.00	4	1.25	7	3.24	11	4.48	13	3.25	9	2.25
Social Work	3	0.75	0	0.00	1	0.25	0	0.00	1	0.25	-2	-0.50
Sociology	1	0.50	3	1.25	5	2.32	8	3.24	8	3.58	7	3.08
Speech	0	0.00	0	0.00	0	0.00	0	0.00	1	0.50	1	0.50
BUSINESS ADMINISTRATION*	10	3.99	13	4.74	13	4.23	10	4.07	15	4.75	5	0.76
Accounting, Finance & Econ.	1	0.50	1	0.25	5	1.74	5	1.99	4	1.75	3	1.25
Computer Sci. & Quan. Meth.	2	0.58	2	1.00	1	0.50	1	0.25	1	0.25	-1	-0.33
Management and Marketing	7	2.91	10	3.49	7	1.99	4	1.83	10	2.75	3	-0.16
EDUCATION*	37	11.04	48	16.52	63	18.76	44	12.53	53	15.47	16	4.43
Center for Pedagogy	5	1.66	6	3.32	9	3.74	8	2.49	9	3.75	4	2.09
Curriculum and Instruction	24	7.64	30	10.71	37	11.95	21	7.47	29	8.00	5	0.36
Health and Physical Education	8	1.74	12	2.49	17	3.07	15	2.57	15	3.72	7	1.98
VISUAL & PERFORMING ARTS	48	20.71	50	25.90	49	29.30	57	34.62	81	39.31	33	18.60
Art and Design	24	11.00	25	14.11	21	12.20	28	15.44	34	16.60	10	5.60
Music	20	8.38	18	8.30	18	12.62	19	15.69	27	14.76	7	6.38
Theatre and Dance	4	1.33	7	3.49	10	4.48	10	3.49	20	7.95	16	6.62
UNIVERSITY COLLEGE	15	2.24	14	2.24	25	2.57	21	3.24	37	4.03	22	1.79
PART-TIME TOTAL	167	78.15	187	93.06	222	91.31	230	104.17	289	123.77	122	45.62

* In the College of Education and the College of Business Administration, faculty have moved between departments during the 5-year period shown.
Notes: # is headcount employed as of November 1; FTE is teaching FTE only.

**AVERAGE FACULTY SALARY COMPARISONS
9-MONTH FACULTY
(IN THOUSANDS OF DOLLARS)
2001 - 2005**

RANK	2001-02		2002-03		2003-04		2004-05		2005-06	
	Salary	1-Yr Inc	Salary	1-Yr Inc	Salary	1-Yr Inc	Salary	1-Yr Inc	Salary	1-Yr Inc
Professor										
Winthrop**	58.2	2.8%	61.6	5.8%	62.4	1.3%	65.3	4.6%	69.6	1.7%
AAUP*	72.8	3.9%	75.3	3.4%	76.1	1.1%	76.7	4.1%	78.9	2.7%
Associate Professor										
Winthrop**	49.6	3.3%	53.6	8.1%	54.6	1.9%	58.3	6.8%	60.0	4.6%
AAUP*	57.8	4.1%	59.3	2.6%	60.0	1.2%	31.0	4.5%	62.7	2.6%
Assistant Professor										
Winthrop**	42.7	3.1%	44.2	3.5%	46.1	4.3%	47.1	2.2%	50.6	8.0%
AAUP*	47.5	4.6%	49.0	3.2%	50.0	2.0%	51.2	5.0%	52.9	3.0%
Instructor										
Winthrop**	33.4	7.4%	35.3	5.7%	36.5	3.4%	37.1	1.6%	39.8	8.0%
AAUP*	36.3	4.2%	36.9	1.7%	37.7	2.2%	38.6	4.8%	39.4	2.7%
All Ranks										
Winthrop**	47.8	2.1%	51.2	7.1%	52.3	2.1%	54.5	4.2%	57.6	4.6%
AAUP*	57.1	3.5%	58.8	3.0%	59.4	1.0%	60.1	4.5%	61.2	2.2%

* AAUP: American Association of University Professors Salary Survey for Comprehensive Public Institutions.

AAUP average includes data from all participating Public Comprehensive Institutions

** Winthrop average includes all full-time instructional faculty as reported to AAUP