

WINTHROP UNIVERSITY BOARD OF TRUSTEES 2000-2001

ELECTED MEMBERS	CONGRESSIONAL DISTRICT	TERM EXPIRES
Thomas Crowson	Fifth	2004
Robert Gahagan	Second	2004
Anne K. Hall	Alumni	2002
Mary Jean Martin	Alumni	2002
Glenda Pittman Owens	First	2006
Larry D. Durham, Sr., Governor's Appointee	At Large	Coterminous with Governor Hodges
Jane C. Shuler	Second	2002
Robert L. Thompson	Fifth	2005
Harold P. Tuttle, Jr.	Fifth	2000
David A. White	Fifth	2002

EX-OFFICIO MEMBERS

The Honorable James Hodges, Governor

Inez Tenenbaum, State Superintendent of Education

A. Watts Huckabee, Sr., Governor's Designee

Sanita Savage Frazier, State Superintendent of Education's Designee

Anthony J. DiGiorgio, President

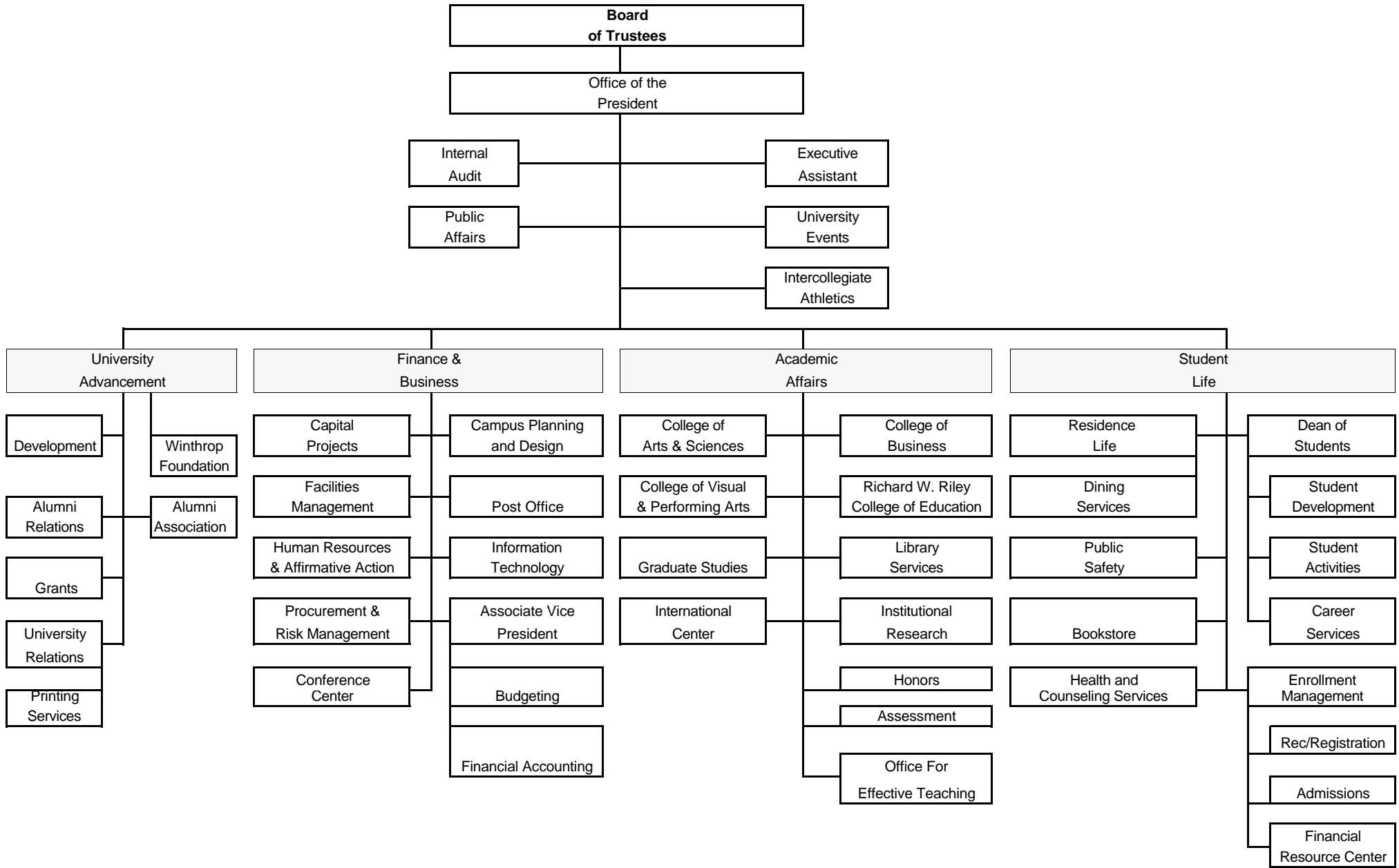
INVITED REPRESENTATIVES

Tom Moore, Chair of Faculty Conference

Rodney Brown, President of Student Government Association

WINTHROP UNIVERSITY

ORGANIZATIONAL CHART 2000 - 2001



WINTHROP UNIVERSITY STRATEGIC PLAN MISSION STATEMENT

Building on its origins as a women's college and its history as a teacher preparation institution, Winthrop University has broadened its mission and has achieved national recognition as a competitive and distinctive, public, residential comprehensive teaching institution that aspires to be among the very best institutions of its type in the nation.

The University provides personalized and challenging undergraduate, graduate, and continuing professional education programs of national caliber. All eligible bachelor, masters and specialist degrees in the liberal arts and sciences, education, business and the visual and performing arts are nationally accredited.

Winthrop enrolls an achievement-oriented, culturally diverse and socially responsible student body of 5,500 students and will remain a medium-sized comprehensive teaching university of between 5,000 and 7,000 students for the foreseeable future. The University recruits South Carolina's best students as well as highly qualified students from beyond the state whose presence adds diversity and enrichment to the campus and state. Winthrop prides itself on being an institution of choice for groups traditionally under-represented on the college campus.

Winthrop's historic campus, located in a growing city within a major metropolitan area, provides a contemporary and supportive environment that promotes student learning and development. Winthrop has a diverse faculty and professional staff of national caliber and supports their work as effective teachers, scholars, researchers, practitioners, and creative artists. Through this talented group, Winthrop students acquire and develop knowledge, skills, and values which enrich their lives and prepare them to meet the needs and challenges of the contemporary world, including the ability to communicate effectively appreciate diversity, work collaboratively, synthesize knowledge, and adapt to change. Ongoing assessment of programs, and services, ensures both that all academic programs challenge students at their highest level of ability and that the library, instructional technology and other academic service areas support courses of study that are consonant with current methods and knowledge. As a result, Winthrop graduates are eminently well-prepared to assume successful careers in business, industry, government education, the arts, and human services, as well as to enter the most competitive graduate or professional schools.

Adopted by the Winthrop University Board of Trustees, June 12, 1998.

STATEMENTS ON ACCREDITATION

Winthrop's academic programs are measured by national standards of quality. Winthrop University is accredited by the Commission on Colleges of the Southern Association of Colleges and Schools (1866 Southern Lane, Decatur, Georgia 30033-4097: Telephone number 404-679-4501) to award bachelor's, masters and specialists degrees. Winthrop was last accredited in 1991.

Winthrop offers over 60 academic programs and all of those eligible for national specialized accreditation have received this distinction.

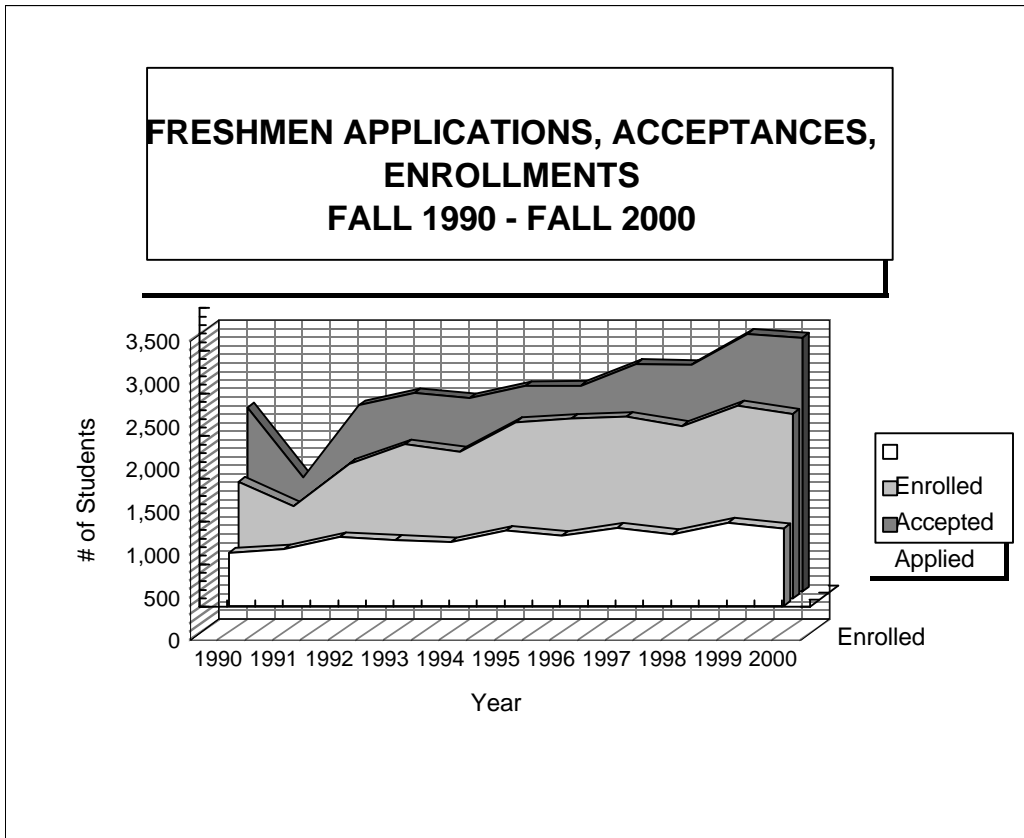
Individual programs are accredited by the following specialized agencies:

- Accrediting Council on Education in Journalism and Mass Communications (ACEJMC)
- Association of Graduate Liberal Studies Programs (AGLSP)
- Commission on Accredited/Approved Dietetics Education (CAADE)
- Computing Science Accreditation Board (CSAB)
- Council on Social Work Education (CSWE)
- Foundation for Interior Design Education Research (FIDER)
- AACSB - International Association for Management Education (AACSB)
- National Association of the Education of Young Children (NAEYC)
- National Association of Schools of Art and Design (NASAD)
- National Association of Schools of Dance (NASD)
- National Association of Schools of Music (NASM)
- National Association of School Psychologists (NASP)
- National Association of Schools of Theatre (NAST)
- National Council for the Accreditation of Teacher Education (NCATE)

Documents on accreditation reside in the Office of the President.

FRESHMEN APPLICATIONS, ACCEPTANCES, ENROLLMENTS FALL 1990 - FALL 2000

YEAR	1990	1991	1992	1993	1994	1995	1996	1997	1998	1999	2000
Applications	2,153	1,334	2,181	2,320	2,261	2,403	2,406	2,662	2,651	3,014	2,969
Acceptances	1,367	1,080	1,576	1,805	1,720	2,064	2,104	2,130	2,019	2,261	2,163
Acceptances as % of Applied	63.5%	81.0%	72.3%	77.8%	76.1%	85.9%	87.4%	80.0%	76.2%	75.0%	72.9%
Enrolled	622	662	805	769	744	878	819	912	836	971	907
Enrolled as % of Accepted	45.5%	61.3%	51.1%	42.6%	43.3%	42.5%	38.9%	42.8%	41.4%	42.9%	41.9%



FIRST-TIME FRESHMEN CLASS PROFILE
FALL 2001
Preliminary

GENDER	Winthrop	
	#	Percent
Male	242	27.2%
Female	649	72.8%
Total	891	100.0%

RACE	Winthrop			
	Male	Female	Total	Percent
International	1	2	3	0.3%
Black (Non-Hispanic)	51	182	233	26.2%
Native American	0	1	1	0.1%
Asian / Pacific Islander	3	5	8	0.9%
Hispanic	2	7	9	1.0%
White (Non-Hispanic)	183	449	632	70.9%
Unknown	2	3	5	0.6%
Total	242	649	891	100.0%

HIGH SCHOOL CLASS RANK	Winthrop		
	#	Percent	Cum. %
Top Tenth	161	19.0%	19.0%
Second Tenth	180	21.3%	40.3%
Top Quarter		0.0%	0.0%
Third Tenth	171	20.2%	60.5%
Fourth Tenth	136	16.1%	76.6%
Fifth Tenth	88	10.4%	87.0%
Bottom 50%	110	13.0%	100.0%
Subtotal	846	100%	
Unknown	46	5.2%	
Total	892		

SCHOOL BACKGROUND	Winthrop	
	#	Percent
S.C. High School		#DIV/0!
Out-of-State H.S./GED		#DIV/0!
Foreign H.S./GED		#DIV/0!
S.C. GED		#DIV/0!
Home School		#DIV/0!
Unknown High School		#DIV/0!
Total	0	#DIV/0!

ENROLLMENT STATUS	Winthrop			
	Male	Female	Total	Percent
Full-Time	241	647	888	99.7%
Part-Time	1	2	3	0.3%
Total	242	649	891	100.0%

RESIDENCY	Winthrop			
	Male	Female	Total	Percent
South Carolina Residents	205	571	776	87.1%
Non-S.C. Residents	37	78	115	12.9%
Total	242	649	891	100.0%

UNIVERSITY HOUSING	Winthrop Freshmen			
	Male	Female	Total	Percent
University Residences			0	#DIV/0!
Off Campus			0	#DIV/0!
Total	0	0	0	#DIV/0!

**FIRST-TIME FRESHMEN CLASS PROFILE
FALL 1997 - FALL 2000**

ENROLLMENT STATUS	1997				1998				1999				2000			
	Winthrop		SC		Winthrop		SC		Winthrop		SC		Winthrop		SC	
	#	Percent	SC Total	Percent	#	Percent	SC Total	Percent	#	Percent	SC Total	Percent	#	Percent	SC Total	Percent
Full-Time	909	99.7%	11,775	97.2%	826	98.8%	12,429	98.1%	966	99.5%	12,521	98.5%	902	99.6%		
Part-Time	3	0.3%	334	2.8%	10	1.2%	236	1.9%	5	0.5%	188	1.5%	4	0.4%		
Total	912	100.0%	12,109	100.0%	836	100.0%	12,665	100.0%	971	100.0%	12,709	100.0%	906	100.0%		

GENDER	1997				1998				1999				2000			
	Winthrop		SC		Winthrop		SC		Winthrop		SC		Winthrop		SC	
	#	Percent	SC Total	Percent	#	Percent	SC Total	Percent	#	Percent	SC Total	Percent	#	Percent	SC Total	Percent
Male	249	27.3%	5,410	44.8%	238	28.5%	5,600	44.2%	246	25.3%	5,539	43.6%	261	28.8%		
Female	663	72.7%	6,674	55.2%	598	71.5%	7,065	55.8%	725	74.7%	7,170	56.4%	645	71.2%		
Total	912	100.0%	12,084	100.0%	836	100.0%	12,665	100.0%	971	100.0%	12,709	100.0%	906	100.0%		

RACE	1997				1998				1999				2000			
	Winthrop		SC		Winthrop		SC		Winthrop		SC		Winthrop		SC	
	#	Percent	SC Total	Percent	#	Percent	SC Total	Percent	#	Percent	SC Total	Percent	#	Percent	SC Total	Percent
International	7	0.8%	135	1.1%	9	1.1%	151	1.2%	19	2.0%	179	1.4%	19	2.1%		
Black (Non-Hispanic)	206	22.6%	2,157	17.9%	200	23.9%	2,462	19.4%	231	23.8%	2,445	19.2%	216	23.8%		
Native American	3	0.3%	23	0.2%	5	0.6%	27	0.2%	5	0.5%	28	0.2%	0	0.0%		
Asian / Pacific Islander	14	1.5%	187	1.5%	9	1.1%	193	1.5%	15	1.5%	202	1.6%	3	0.3%		
Hispanic	10	1.1%	151	1.2%	8	1.0%	159	1.3%	6	0.6%	146	1.1%	12	1.3%		
White (Non-Hispanic)	672	73.7%	9,368	77.5%	605	72.4%	9,600	75.8%	695	71.6%	9,642	75.9%	656	72.4%		
Unknown	0	0.0%	63	0.5%	0	0.0%	73	0.6%	0	0.0%	67	0.5%	0	0.0%		
Total	912	100.0%	12,084	100.0%	836	100.0%	12,665	100.0%	971	100.0%	12,709	100.0%	906	100.0%		

RESIDENCY	1997				1998				1999				2000			
	Winthrop		SC		Winthrop		SC		Winthrop		SC		Winthrop		SC	
	#	Percent	SC Total	Percent	#	Percent	SC Total	Percent	#	Percent	SC Total	Percent	#	Percent	SC Total	Percent
South Carolina Residents	776	85.1%	8,519	70.4%	751	89.8%	8,945	70.6%	850	87.5%	8,892	70.0%	784	86.5%		
Non-S.C. Residents	136	14.9%	3,590	29.6%	85	10.2%	3,720	29.4%	121	12.5%	3,817	30.0%	122	13.5%		
Total	912	100.0%	12,109	100.0%	836	100.0%	12,665	100.0%	971	100.0%	12,709	100.0%	906	100.0%		

Note: SC figures refer to first-time freshmen at all S.C. Public 4-Year Institutions.

FIRST-TIME FRESHMEN CLASS PROFILE
FALL 1997 - FALL 2000
(Continued)

HIGH SCHOOL SENIOR CLASS RANK	1997			1998			1999			2000		
	#	Percent	Cum. %	#	Percent	Cum. %	#	Percent	Cum. %	#	Percent	Cum. %
Top Tenth	217	25.1%	25.1%	179	22.7%	22.7%	220	24.4%	24.4%	218	25.9%	25.9%
Second Tenth	209	24.2%	49.2%	171	21.6%	44.3%	192	21.3%	45.7%	180	21.4%	47.2%
Top Quarter	479	55.4%	55.4%	433	54.8%	54.8%	495	54.9%	55.1%	486	57.7%	
Third Tenth	150	17.3%	66.6%	145	18.4%	62.7%	171	19.0%	64.7%	155	18.4%	65.6%
Fourth Tenth	118	13.6%	80.2%	124	15.7%	78.4%	129	14.3%	79.0%	119	14.1%	79.7%
Fifth Tenth	97	11.2%	91.4%	85	10.8%	89.1%	93	10.3%	89.3%	91	10.8%	90.5%
Bottom 50%	74	8.6%	100.0%	86	10.9%	100.0%	96	10.7%	100.0%	80	9.5%	100.0%
Subtotal	865	100.0%		790	100.0%		901	100.0%		843	100.0%	
Unknown	47	5.2%		46	5.5%		70	7.2%		63	7.0%	
Total	912			836			971			906		

SCHOOL BACKGROUND	1997				1998				1999				2000			
	Winthrop		SC		Winthrop		SC		Winthrop		SC		Winthrop		SC	
	#	Percent	SC Total	Percent	#	Percent	SC Total	Percent	#	Percent	SC Total	Percent	#	Percent	SC Total	Percent
S.C. High School	765	83.9%	8,228	67.9%	735	87.9%	8,643	68.2%	834	85.9%	8,598	67.7%	761	84.0%		
Out-of-State H.S./GED	140	15.4%	3,649	30.1%	87	10.4%	3,747	29.6%	118	12.2%	3,794	29.9%	124	13.7%		
Foreign H.S./GED	6	0.7%	132	1.1%	11	1.3%	163	1.3%	16	1.6%	198	1.6%	15	1.7%		
S.C. GED	0	0.0%	8	0.1%	1	0.1%	2	0.0%	2	0.2%	7	0.1%	2	0.2%		
Home School	1	0.1%	1	0.0%	1	0.1%	2	0.0%	1	0.1%	2	0.0%	4	0.4%		
Unknown High School	0	0.0%	91	0.8%	1	0.1%	108	0.9%	0	0.0%	110	0.9%	0	0.0%		
Total	912	100.0%	12,109	100.0%	836	100.0%	12,665	100.0%	971	100.0%	12,709	100.0%	906	100.0%		

Note: SC figures refer to first-time freshmen at all S.C. Public 4-Year Institutions.

**FIRST-TIME ENTERING FRESHMEN
FALL 1991 - FALL 2000**

	1991	1992	1993	1994	1995	1996*	1997*	1998*	1999*	2000*	99-00	
											% Diff	Diff
Total 1st-Time Freshmen	662	805	769	744	878	819	912	836	971	907	-6.6%	-64
Winthrop's Average including provisionals, internationals, and age 22 & older												
COMBINED SAT	944	974	986	989	963	1051	1039	1043	1042	1056	1.3%	14
Verb	453	469	470	471	462	530	528	526	525	532	1.3%	7
Math	491	505	516	518	501	521	511	517	517	524	1.4%	7
# students w/ SAT	557	716	648	582	671	721	803	742	822	763	-7.2%	-59
% 1st-Time Freshmen	84.1%	88.9%	84.3%	78.2%	76.4%	88.0%	88.0%	88.8%	84.7%	84.1%	-0.6%	0
ACT	18	18	18	18	19	22	20	21	23	22	-4.3%	-1
# students w/ ACT	94	80	112	147	192	81	105	84	138	135	-2.2%	-3
% 1st-Time Freshmen	14.2%	9.9%	14.6%	19.8%	21.9%	9.9%	11.5%	10.0%	14.2%	14.9%	4.7%	0
# with no SAT or ACT Score	11	9	9	15	15	17	4	10	11	9	-18.2%	-2
	1.7%	1.1%	1.2%	2.0%	1.7%	2.1%	0.4%	1.2%	1.1%	1.0%	-12.4%	0
State Average SAT	832	831	838	838	844	954	953	951	954	966	1.3%	12
National Average SAT	896	899	902	902	910	1013	1016	1017	1016	1019	0.3%	3

* The use of SAT or ACT scores for admission to Winthrop for all new freshmen is based on the highest score of the two tests.

Note: State and National averages obtained from College Board. In 1996 the College Board recentered the SAT. The scores in the 1996-00 columns should not be compared with figures from previous years.

**SOUTH CAROLINA HIGH SCHOOLS
WHICH CONTRIBUTED TEN OR MORE STUDENTS
TO WINTHROP'S FRESHMAN CLASS IN ONE YEAR
FALL 1996 - FALL 2000**

S.C. High School of Graduation	Enrolled Fall 96	Enrolled Fall 97	Enrolled Fall 98	Enrolled Fall 99	Enrolled Fall 00	5 Year Total
Northwestern	28	31	32	42	38	171
Fort Mill	27	25	37	25	29	143
Rock Hill	28	14	20	24	23	109
Irmo	14	27	22	15	18	96
Sumter	13	14	13	31	12	83
Clover	17	15	16	22	11	81
Lexington	11	10	18	20	18	77
Mauldin	18	14	10	14	16	72
York Comprehensive	16	12	7	15	15	65
Dutch Fork	11	10	2	22	14	59
Lancaster	7	14	14	11	10	56
Summerville	6	7	12	17	11	53
Paul M. Dorman	8	10	8	12	13	51
Spring Valley	10	14	10	8	7	49
Chester	8	13	6	13	7	47
Stratford	5	9	15	7	8	44
Spartanburg	12	7	9	10	5	43
North Augusta	8	11	9	11	4	43
Richland Northeast	7	12	6	8	7	40
Cheraw	13	2	10	4	10	39
Wando	7	7	6	7	12	39
Hartsville	1	5	14	7	8	35
Lugoff-Elgin	2	6	3	18	6	35
Hillcrest	4	6	7	10	7	34
Wade Hampton	1	9	9	2	11	32
Camden	2	12	4	9	4	31
Fort Dorchester	3	10	4	10	4	31
Dreher	4	5	3	6	13	31
Greenwood	5	10	6	3	6	30
Laurens	4	4	6	5	10	29
Orangeburg-Wilkinson	3	6	3	5	12	29
Beaufort	4	10	3	3	7	27
Conway	3	6	12	4	1	26
Lower Richland	4	2	4	3	10	23
Eastside	6	0	0	1	10	17

**FIRST-TIME FRESHMEN ENROLLMENT BY MAJOR
FALL 1996 - FALL 2000**

COLLEGE / DEGREE PROGRAMS	1996	1997	1998	1999	2000	% OF 5 YEAR TOTAL	99 TO 00 % DIFF.	96 TO 00 % DIFF.
ARTS & SCIENCES	281	334	300	344	338	34.0%	-1.7%	20.3%
Biology	71	74	76	78	95	8.3%	21.8%	33.8%
Chemistry	9	12	15	9	7	1.1%	-22.2%	-22.2%
English	31	28	29	17	19	2.9%	11.8%	-38.7%
General Communication Disorders	*	20	15	16	7	1.3%	-56.3%	N/A
History	13	17	15	27	14	2.0%	-48.1%	7.7%
Human Nutrition	6	11	8	3	11	0.7%	266.7%	83.3%
Integrated Marketing Communication	*	8	8	18	15	1.1%	-16.7%	N/A
Mass Communication	25	39	44	44	67	4.1%	52.3%	168.0%
Mathematics (B.A.)	1	3	4	2	1	0.5%	-50.0%	0.0%
Mathematics (B.S.)	18	14	8	9	10	1.5%	11.1%	-44.4%
Medical Technology	2	3	3	2	1	0.3%	-50.0%	-50.0%
Modern Languages	7	13	6	11	6	1.0%	-45.5%	-14.3%
Philosophy & Religious Studies	0	1	1	1	1	0.1%	0.0%	100.0%
Political Science	30	27	17	30	24	2.7%	-20.0%	-20.0%
Psychology	37	48	31	49	50	4.5%	2.0%	35.1%
Science Communications	2	0	0	1	0	0.1%	-100.0%	-100.0%
Social Work	12	8	10	12	4	1.1%	-66.7%	-66.7%
Sociology	7	8	10	15	6	1.0%	-60.0%	-14.3%
Speech	10	0	**	**	**	0.2%	N/A	N/A
BUSINESS ADMINISTRATION	168	182	161	208	201	19.0%	-3.4%	19.6%
Business Administration	136	151	134	139	126	14.9%	-9.4%	-7.4%
Computer Science	32	23	19	39	45	3.1%	15.4%	40.6%
Integrated Marketing Communication	*	8	8	18	15	1.1%	-16.7%	N/A
Sport Management	*	*	*	12	15	0.3%	25.0%	N/A
EDUCATION	154	150	146	194	153	18.0%	-21.1%	-0.6%
Business Education	3	1	2	0	0	0.2%	0.0%	-100.0%
Early Childhood Education	35	28	27	57	41	4.3%	-28.1%	17.1%
Elementary Education	71	80	80	97	83	9.1%	-14.4%	16.9%
Home Economics	0	1	**	**	**	0.0%	N/A	N/A
Family & Consumer Science (HEED)	0	0	1	1	0	0.0%	-100.0%	0.0%
Physical Education	8	12	12	7	5	1.1%	-28.6%	-37.5%
Special Education	37	28	24	20	9	3.0%	-55.0%	-75.7%
Sport Management	*	*	*	12	15	0.3%	25.0%	N/A
VISUAL & PERFORMING ARTS	111	151	132	124	129	14.0%	4.0%	16.2%
Art (B.A.)	15	21	21	23	34	2.7%	47.8%	126.7%
Art (B.F.A.)	29	63	50	39	26	4.4%	-33.3%	-10.3%
Art History (B.A.)	1	1	0	1	2	0.1%	100.0%	100.0%
Dance	7	8	9	6	5	0.8%	-16.7%	-28.6%
Music (B.A.)	13	7	9	11	8	0.9%	-27.3%	-38.5%
Music Education (Choral)	7	8	8	7	12	1.0%	71.4%	71.4%
Music Education (Instrumental)	14	18	17	13	15	1.6%	15.4%	7.1%
Music (Performance)	12	4	1	7	7	0.6%	0.0%	-41.7%
Theatre	13	21	17	17	20	1.8%	17.6%	53.8%
PRE-MAJOR	106	105	107	131	116	12.2%	-11.5%	9.4%
INTERDISCIPLINARY MAJORS	*	8	8	30	30	1.0%	0.0%	N/A
Integrated Marketing Communication	*	8	8	18	15	1.1%	-16.7%	N/A
Sport Management	*	*	*	12	15	0.3%	25.0%	N/A

* New program

** Discontinued program

**HEADCOUNT ENROLLMENT OF TRANSFERS AT WINTHROP
BY S.C. INSTITUTIONS OF PREVIOUS ENROLLMENT
FALL 1996 - FALL 2000**

FIGE	TECHNICAL COLLEGES	Enrolled Fall 96	Enrolled Fall 97	Enrolled Fall 98	Enrolled Fall 99	Enrolled Fall 00	5 Year % of Total
003996	York	75	65	88	76	84	60.3%
003991	Greenville	7	14	15	18	11	10.1%
003993	Midlands	13	5	12	16	30	11.8%
004920	Trident - Palmer	0	0	0	8	5	2.0%
008818	Trident	9	8	6	0	0	3.6%
007602	Chesterfield-Marlboro	2	3	2	3	5	2.3%
003994	Spartanburg	1	2	4	2	2	1.7%
004926	Tri-County	1	5	1	4	5	2.5%
003992	Piedmont	0	2	0	3	4	1.4%
003995	Central Carolina	3	0	0	0	0	0.5%
003990	Florence-Darlington	1	3	1	3	1	1.4%
006815	Orangeburg-Calhoun	0	2	0	0	2	0.6%
010056	Aiken	0	0	1	0	0	0.2%
005363	Denmark	0	0	0	0	0	0.0%
004925	Horry-Georgetown	1	0	1	1	5	1.2%
009910	Tech. College of Low Country	0	0	0	0	0	0.0%
009932	Williamsburg	0	2	0	0	0	0.3%
	Subtotal	113	111	131	134	154	100.0%

FIGE	PUBLIC SR COLLEGE & UNIV	Enrolled Fall 96	Enrolled Fall 97	Enrolled Fall 98	Enrolled Fall 99	Enrolled Fall 00	5 Year % of Total
003453	USC-Lancaster	17	19	22	22	16	26.7%
003448	USC-Columbia	14	11	14	12	13	17.8%
003425	Clemson	3	8	7	7	6	8.6%
009226	Francis Marion	2	1	5	1	8	4.7%
006951	USC-Spartanburg	9	3	4	7	4	7.5%
003435	Lander	6	1	6	3	4	5.6%
012112	USC-Sumter	2	0	2	1	6	3.1%
003428	College of Charleston	3	7	4	7	8	8.1%
003451	Coastal Carolina	4	1	2	5	5	4.7%
003446	S.C. State	3	0	5	3	2	3.6%
003450	USC-Beaufort	2	1	3	1	1	2.2%
003449	USC-Aiken	5	1	2	3	1	3.3%
004927	USC-Union	2	2	2	1	1	2.2%
003423	The Citadel	0	1	0	1	0	0.6%
003454	USC-Salkehatchie	0	0	0	2	2	1.1%
003438	Medical University of S.C.	0	0	0	0	0	0.0%
	Subtotal	72	56	78	76	77	100.0%

**HEADCOUNT ENROLLMENT OF TRANSFERS AT WINTHROP
BY S.C. INSTITUTIONS OF PREVIOUS ENROLLMENT
FALL 1996 - FALL 200
(continued)**

FICE	PRIVATE SR COLLEGES & UNIV	Enrolled Fall 96	Enrolled Fall 97	Enrolled Fall 98	Enrolled Fall 99	Enrolled Fall 00	5 Year % of Total
003447	Spartanburg Methodist	10	12	8	6	16	31.0%
003418	Anderson	3	2	5	4	2	9.5%
003441	North Greenville	0	4	0	2	2	4.8%
003430	Columbia	4	2	0	1	6	7.7%
003440	Newberry	1	2	4	0	1	4.8%
003445	Presbyterian	0	2	1	1	1	3.0%
003419	Charleston Southern (Baptist)	3	1	5	2	3	8.3%
003420	Benedict	0	2	2	1	1	3.6%
003431	Converse	1	3	2	1	2	5.4%
003432	Erskine	2	3	0	0	0	3.0%
003436	Limestone	0	0	2	3	2	4.2%
003439	Morris	3	3	2	0	2	6.0%
003434	Furman	0	1	0	0	3	2.4%
003422	Central Wesleyan	0	0	0	0	0	0.0%
003427	Coker	0	0	0	1	0	0.6%
003424	Claffin	0	0	0	0	3	1.8%
003457	Wofford	0	1	0	2	1	2.4%
003429	Columbia Bible	0	0	0	0	0	0.0%
003421	Bob Jones	0	0	0	0	0	0.0%
003417	Allen	0	1	1	0	0	1.2%
003455	Voorhees	0	0	0	0	1	0.6%
	Subtotal	27	39	32	24	46	100.0%

SUMMARY	Enrolled Fall 96	Enrolled Fall 97	Enrolled Fall 98	Enrolled Fall 99	Enrolled Fall 00	5 Year % of Total
Technical Colleges	113	111	131	134	154	37.0%
Public Sr Colleges & Univ.	72	56	78	76	77	20.7%
Private Sr Colleges & Univ.	27	39	32	24	46	9.7%
Out-of-State	100	107	110	123	127	32.6%
Total	312	313	351	357	404	100.0%

**HEADCOUNT ENROLLMENT
OF FIRST-YEAR GRADUATE STUDENTS AT WINTHROP
BY S.C. INSTITUTIONS OF PREVIOUS ENROLLMENT
FALL 1996 - FALL 2000**

FICE	PUBLIC SR COLLEGE & UNIV	Enrolled Fall 96	Enrolled Fall 97	Enrolled Fall 98	Enrolled Fall 99	Enrolled Fall 00	5 Year % SC Public	5 Year % of Total
003425	Clemson	13	6	0	4	8	8.1%	3.6%
003451	Coastal Carolina	7	5	7	5	4	7.3%	3.2%
003428	College of Charleston	3	1	3	3	3	3.4%	1.5%
009226	Francis Marion	1	3	0	3	2	2.4%	1.0%
003435	Lander	1	3	1	4	1	2.6%	1.2%
003438	Medical University of S.C.	1	0	0	0	2	0.8%	0.3%
003446	S.C. State	5	1	2	2	6	4.2%	1.8%
003423	The Citadel	0	2	0	2	3	1.8%	0.8%
003449	USC-Aiken	1	0	0	0	0	0.3%	0.1%
003448	USC-Columbia	13	18	8	6	10	14.4%	6.3%
006951	USC-Spartanburg	2	0	2	1	3	2.1%	0.9%
003456	Winthrop	43	43	45	39	31	52.6%	23.2%
	Subtotal	90	82	68	69	73	100.0%	44.0%

FICE	PRIVATE SR COLLEGE & UNIV	Enrolled Fall 96	Enrolled Fall 97	Enrolled Fall 98	Enrolled Fall 99	Enrolled Fall 00	5 Year % SC Private	5 Year % of Total
003418	Anderson College	0	0	0	0	1	1.8%	0.1%
003420	Benedict	0	1	0	0	0	1.8%	0.1%
003421	Bob Jones	1	0	0	1	1	5.3%	0.3%
003419	Charleston Southern	0	1	0	1	0	3.5%	0.2%
003424	Clafin	0	0	0	1	0	1.8%	0.1%
003427	Coker	3	0	1	0	0	7.0%	0.5%
003430	Columbia	2	3	0	0	0	8.8%	0.6%
003431	Converse	1	0	1	1	1	7.0%	0.5%
003432	Erskine	1	2	2	0	2	12.3%	0.8%
003434	Furman	1	1	0	0	0	3.5%	0.2%
003436	Limestone	5	0	1	1	1	14.0%	0.9%
003439	Morris	0	0	0	0	1	1.8%	0.1%
003440	Newberry	0	0	0	2	2	7.0%	0.5%
003445	Presbyterian	3	2	0	0	1	10.5%	0.7%
003422	Southern Wesleyan	1	1	0	0	0	3.5%	0.2%
003457	Wofford	1	0	2	2	1	10.5%	0.7%
	Subtotal	19	11	7	9	11	100.0%	6.6%

SUMMARY

SUMMARY	Enrolled Fall 96	Enrolled Fall 97	Enrolled Fall 98	Enrolled Fall 99	Enrolled Fall 00	5 Year % of Total
Public Senior Colleges & Univ.	90	82	68	69	73	44.0%
Private Senior Colleges & Univ.	19	11	7	9	11	6.6%
Out-of-State	101	80	98	67	83	49.4%
Total	210	173	173	145	167	100.0%

NOTE: Only students classified as fully-admitted, degree-seeking students are counted.

**HEADCOUNT ENROLLMENT
BY GENDER, LEVEL & FULL/PART TIME
FALL 2000**

LEVEL	2000		
	Male	Female	Total
Full-Time Undergraduate	1,244	2,788	4,032
Part-Time Undergraduate	181	437	618
Subtotal	1,425	3,225	4,650
Full-Time Graduate	117	172	289
Part-Time Graduate	234	889	1,123
Subtotal	351	1,061	1,412
Grand Total	1,776	4,286	6,062

**HEADCOUNT ENROLLMENT
BY GENDER & LEVEL
FALL 1991 - FALL 2000**

LEVEL	1991		1992		1993		1994		1995	
	Male	Female	Male	Female	Male	Female	Male	Female	Male	Female
Undergraduate	1,310	2,784	1,288	2,819	1,355	2,710	1,305	2,721	1,317	2,816
Graduate	293	631	310	608	307	735	337	801	360	815
Total	1,603	3,415	1,598	3,427	1,662	3,445	1,642	3,522	1,677	3,631
Percent	31.9%	68.1%	31.8%	68.2%	32.5%	67.5%	31.8%	68.2%	31.6%	68.4%

LEVEL	1996		1997		1998		1999		2000	
	Male	Female	Male	Female	Male	Female	Male	Female	Male	Female
Undergraduate	1,337	2,845	1,346	2,948	1,342	2,998	1,380	3,231	1,425	3,225
Graduate	347	873	351	929	317	934	306	923	351	1,061
Total	1,684	3,718	1,697	3,877	1,659	3,932	1,686	4,154	1,776	4,286
Percent	31.2%	68.8%	30.4%	69.6%	29.7%	70.3%	28.9%	71.1%	29.3%	70.7%

HEADCOUNT ENROLLMENT BY GENDER, CLASS, ETHNICITY & FULL/PART TIME FALL 2000

CLASS/ETHNICITY	FULL-TIME				PART-TIME				TOTAL CLASS	
	FEMALE		MALE		FEMALE		MALE		N	%
	N	%	N	%	N	%	N	%		
FRESHMAN	745	100%	324	100%	26	100%	9	100%	1,104	100%
International	8	1.1%	15	4.6%	0	0.0%	0	0.0%	23	2.1%
Black(Non-Hispanic)	213	28.6%	73	22.5%	6	23.1%	1	11.1%	293	26.5%
Native American	1	0.1%	1	0.3%	1	3.8%	0	0.0%	3	0.3%
Asian	3	0.4%	1	0.3%	0	0.0%	0	0.0%	4	0.4%
Hispanic	9	1.2%	4	1.2%	0	0.0%	0	0.0%	13	1.2%
White(Non-Hispanic)	511	68.6%	230	71.0%	19	73.1%	8	88.9%	768	69.6%
SOPHOMORE	764	100%	315	100%	42	100%	25	100%	1,146	100%
International	7	0.9%	10	3.2%	0	0.0%	0	0.0%	17	1.5%
Black(Non-Hispanic)	210	27.5%	67	21.3%	15	35.7%	7	28.0%	299	26.1%
Native American	2	0.3%	1	0.3%	1	2.4%	0	0.0%	4	0.3%
Asian	12	1.6%	4	1.3%	1	2.4%	0	0.0%	17	1.5%
Hispanic	6	0.8%	1	0.3%	0	0.0%	0	0.0%	7	0.6%
White(Non-Hispanic)	527	69.0%	232	73.7%	25	59.5%	18	72.0%	802	70.0%
JUNIOR	622	100%	313	100%	74	100%	30	100%	1,039	100%
International	5	0.8%	16	5.1%	0	0.0%	0	0.0%	21	2.0%
Black(Non-Hispanic)	173	27.8%	74	23.6%	13	17.6%	4	13.3%	264	25.4%
Native American	5	0.8%	0	0.0%	2	2.7%	1	3.3%	8	0.8%
Asian	5	0.8%	4	1.3%	3	4.1%	1	3.3%	13	1.3%
Hispanic	7	1.1%	4	1.3%	3	4.1%	0	0.0%	14	1.3%
White(Non-Hispanic)	427	68.6%	215	68.7%	53	71.6%	24	80.0%	719	69.2%
SENIOR	649	100%	284	100%	116	100%	48	100%	1,097	100%
International	10	1.5%	12	4.2%	1	0.9%	2	4.2%	25	2.3%
Black(Non-Hispanic)	151	23.3%	64	22.5%	31	26.7%	5	10.4%	251	22.9%
Native American	2	0.3%	1	0.4%	0	0.0%	0	0.0%	3	0.3%
Asian	7	1.1%	4	1.4%	0	0.0%	0	0.0%	11	1.0%
Hispanic	8	1.2%	0	0.0%	1	0.9%	1	2.1%	10	0.9%
White(Non-Hispanic)	471	72.6%	203	71.5%	83	71.6%	40	83.3%	797	72.7%
UNDERGRADUATE SPECIAL	8	100%	8	100%	179	100%	69	100%	264	100%
International	2	25.0%	3	37.5%	0	0.0%	0	0.0%	5	1.9%
Black(Non-Hispanic)	0	0.0%	1	12.5%	21	11.7%	11	15.9%	33	12.5%
Native American	0	0.0%	0	0.0%	1	0.6%	0	0.0%	1	0.4%
Asian	1	12.5%	0	0.0%	1	0.6%	1	1.4%	3	1.1%
Hispanic	0	0.0%	0	0.0%	0	0.0%	0	0.0%	0	0.0%
White(Non-Hispanic)	5	62.5%	4	50%	156	87.2%	57	82.6%	222	84.1%
GRADUATE	143	100%	113	100%	280	100%	109	100%	645	100%
International	12	8.4%	11	9.7%	3	1.1%	2	1.8%	28	4.3%
Black(Non-Hispanic)	30	21.0%	14	12.4%	51	18.2%	22	20.2%	117	18.1%
Native American	0	0.0%	0	0.0%	0	0.0%	0	0.0%	0	0.0%
Asian	1	0.7%	2	1.8%	1	0.4%	1	0.9%	5	0.8%
Hispanic	2	1.4%	3	2.7%	3	1.1%	0	0.0%	8	1.2%
White(Non-Hispanic)	98	68.5%	83	73%	222	79.3%	84	77.1%	487	75.5%
GRADUATE SPECIAL	29	100%	4	100%	609	100%	125	100%	767	100%
International	0	0.0%	0	0.0%	0	0.0%	0	0.0%	0	0.0%
Black(Non-Hispanic)	5	17.2%	2	50.0%	67	11.0%	18	14.4%	92	12.0%
Native American	0	0.0%	0	0.0%	0	0.0%	0	0.0%	0	0.0%
Asian	0	0.0%	0	0.0%	2	0.3%	0	0.0%	2	0.3%
Hispanic	0	0.0%	0	0.0%	2	0.3%	1	0.8%	3	0.4%
White(Non-Hispanic)	24	82.8%	2	50%	538	88.3%	106	84.8%	670	87.4%
GRAND TOTAL	2,960	49%	1,361	22.5%	1,326	21.9%	415	6.8%	6,062	100%

HEADCOUNT ENROLLMENT BY GENDER, CLASS, ETHNICITY & FULL/PART TIME FALL 1999

CLASS/ETHNICITY	FULL-TIME				PART-TIME				TOTAL CLASS	
	FEMALE		MALE		FEMALE		MALE		N	%
	N	%	N	%	N	%	N	%		
FRESHMAN	800	100%	295	100%	25	100%	13	100%	1,133	100%
International	10	1.3%	13	4.4%	0	0.0%	0	0.0%	23	2.0%
Black(Non-Hispanic)	201	25.1%	65	22.0%	6	24.0%	2	15.4%	274	24.2%
Native American	5	0.6%	1	0.3%	0	0.0%	0	0.0%	6	0.5%
Asian	12	1.5%	5	1.7%	0	0.0%	0	0.0%	17	1.5%
Hispanic	5	0.6%	2	0.7%	1	4.0%	0	0.0%	8	0.7%
White(Non-Hispanic)	567	70.9%	209	70.8%	18	72.0%	11	84.6%	805	71.1%
SOPHOMORE	694	100%	317	100%	60	100%	28	100%	1,099	100%
International	4	0.6%	11	3.5%	0	0.0%	0	0.0%	15	1.4%
Black(Non-Hispanic)	193	27.8%	83	26.2%	18	30.0%	4	14.3%	298	27.1%
Native American	5	0.7%	1	0.3%	1	1.7%	0	0.0%	7	0.6%
Asian	8	1.2%	5	1.6%	0	0.0%	1	3.6%	14	1.3%
Hispanic	7	1.0%	2	0.6%	0	0.0%	0	0.0%	9	0.8%
White(Non-Hispanic)	477	68.7%	215	67.8%	41	68.3%	23	82.1%	756	68.8%
JUNIOR	620	100%	284	100%	48	100%	22	100%	974	100%
International	7	1.1%	6	2.1%	0	0.0%	0	0.0%	13	1.3%
Black(Non-Hispanic)	139	22.4%	70	24.6%	8	16.7%	2	9.1%	219	22.5%
Native American	1	0.2%	1	0.4%	1	2.1%	0	0.0%	3	0.3%
Asian	10	1.6%	2	0.7%	0	0.0%	0	0.0%	12	1.2%
Hispanic	5	0.8%	3	1.1%	0	0.0%	0	0.0%	8	0.8%
White(Non-Hispanic)	458	73.9%	202	71.1%	39	81.3%	20	90.9%	719	73.8%
SENIOR	643	100%	267	100%	118	100%	68	100%	1,096	100%
International	7	1.1%	19	7.1%	1	0.8%	1	1.5%	28	2.6%
Black(Non-Hispanic)	162	25.2%	47	17.6%	26	22.0%	10	14.7%	245	22.4%
Native American	1	0.2%	0	0.0%	0	0.0%	0	0.0%	1	0.1%
Asian	2	0.3%	5	1.9%	0	0.0%	0	0.0%	7	0.6%
Hispanic	7	1.1%	3	1.1%	1	0.8%	1	1.5%	12	1.1%
White(Non-Hispanic)	464	72.2%	193	72.3%	90	76.3%	56	82.4%	803	73.3%
UNDERGRADUATE SPECIAL	11	100%	9	100%	213	100%	76	100%	309	100%
International	1	9.1%	4	44.4%	0	0.0%	0	0.0%	5	1.6%
Black(Non-Hispanic)	2	18.2%	1	11.1%	48	22.5%	9	11.8%	60	19.4%
Native American	0	0.0%	0	0.0%	1	0.5%	1	1.3%	2	0.6%
Asian	0	0.0%	0	0.0%	0	0.0%	1	1.3%	1	0.3%
Hispanic	1	9.1%	0	0.0%	0	0.0%	1	1.3%	2	0.6%
White(Non-Hispanic)	7	63.6%	4	44%	164	77.0%	64	84.2%	239	77.3%
GRADUATE	174	100%	93	100%	220	100%	81	100%	568	100%
International	10	5.7%	4	4.3%	2	0.9%	2	2.5%	18	3.2%
Black(Non-Hispanic)	41	23.6%	21	22.6%	37	16.8%	8	9.9%	107	18.8%
Native American	0	0.0%	0	0.0%	0	0.0%	1	1.2%	1	0.2%
Asian	2	1.1%	1	1.1%	0	0.0%	0	0.0%	3	0.5%
Hispanic	1	0.6%	2	2.2%	5	2.3%	1	1.2%	9	1.6%
White(Non-Hispanic)	120	69.0%	65	70%	176	80.0%	69	85.2%	430	75.7%
GRADUATE SPECIAL	8	100%	6	100%	521	100%	126	100%	661	100%
International	0	0.0%	0	0.0%	1	0.2%	1	0.8%	2	0.3%
Black(Non-Hispanic)	3	37.5%	2	33.3%	66	12.7%	20	15.9%	91	13.8%
Native American	0	0.0%	0	0.0%	1	0.2%	1	0.8%	2	0.3%
Asian	0	0.0%	0	0.0%	1	0.2%	2	1.6%	3	0.5%
Hispanic	0	0.0%	0	0.0%	3	0.6%	0	0.0%	3	0.5%
White(Non-Hispanic)	5	62.5%	4	67%	449	86.2%	102	81.0%	560	84.7%
GRAND TOTAL	2,950	51%	1,271	21.8%	1,205	20.6%	414	7.1%	5,840	100%

**HEADCOUNT ENROLLMENT
BY ETHNIC CATEGORY & FULL/PART TIME
FALL 2000**

ETHNIC CATEGORY	FULL-TIME		PART-TIME		TOTAL	
	N	%	N	%	N	%
Undergraduate	4,032	100%	618	100%	4,650	100%
White, non-Hispanic	2,825	70.1%	483	78.2%	3,308	71.1%
Black, non-Hispanic	1,026	25.4%	114	18.4%	1,140	24.5%
International	88	2.2%	3	0.5%	91	2.0%
American Indian	13	0.3%	6	1.0%	19	0.4%
Asian/Pacific Islander	41	1.0%	7	1.1%	48	1.0%
Hispanic	39	1.0%	5	0.8%	44	0.9%
Graduate	289	100%	1,123	100%	1,412	100%
White, non-Hispanic	207	71.6%	950	84.6%	1,157	81.9%
Black, non-Hispanic	51	17.6%	158	14.1%	209	14.8%
International	23	8.0%	5	0.4%	28	2.0%
American Indian	0	0.0%	0	0.0%	0	0.0%
Asian/Pacific Islander	3	1.0%	4	0.4%	7	0.5%
Hispanic	5	1.7%	6	0.5%	11	0.8%
Total Students	4,321	100%	1,741	100%	6,062	100%
White, non-Hispanic	3,032	70.2%	1,433	82.3%	4,465	73.7%
Black, non-Hispanic	1,077	24.9%	272	15.6%	1,349	22.3%
International	111	1.0%	8	0.5%	119	2.0%
American Indian	13	0.3%	6	0.3%	19	0.3%
Asian/Pacific Islander	44	1.0%	11	0.6%	55	0.9%
Hispanic	44	1.0%	11	0.6%	55	0.9%

**HEADCOUNT ENROLLMENT
FALL 1991 - FALL 2000**

ETHNIC CATEGORY	1991		1992		1993		1994		1995	
	N	%	N	%	N	%	N	%	N	%
Total Students	5,018	100%	5,025	100%	5,107	100%	5,164	100%	5,308	100%
White, non-Hispanic	4,064	81.0%	3,973	79.1%	3,948	77.3%	3,917	75.9%	4,010	75.5%
Black, non-Hispanic	773	15.4%	833	16.6%	919	18.0%	1,000	19.4%	1,054	19.9%
International	129	2.6%	140	2.8%	165	3.2%	153	3.0%	140	2.6%
American Indian	8	0.2%	11	0.2%	6	0.1%	11	0.2%	11	0.2%
Asian/Pacific Islander	25	0.5%	36	0.7%	29	0.6%	37	0.7%	46	0.9%
Hispanic	19	0.4%	32	0.6%	40	0.8%	46	0.9%	47	0.9%

ETHNIC CATEGORY	1996		1997		1998		1999		2000	
	N	%	N	%	N	%	N	%	N	%
Total Students	5,402	100%	5,574	100%	5,591	100%	5,840	100%	6,062	100%
White, non-Hispanic	4,059	75.1%	4,158	74.6%	4,166	74.5%	4,312	73.8%	4,465	73.7%
Black, non-Hispanic	1,114	20.6%	1,191	21.4%	1,198	21.4%	1,294	22.2%	1,349	22.3%
International	119	2.2%	105	1.9%	96	1.7%	104	1.8%	119	2.0%
American Indian	20	0.4%	22	0.4%	28	0.5%	22	0.4%	19	0.3%
Asian/Pacific Islander	39	0.7%	44	0.8%	55	1.0%	57	1.0%	55	0.9%
Hispanic	51	0.9%	54	1.0%	48	0.9%	51	0.9%	55	0.9%

**AVERAGE WINTHROP STUDENT AGE
1991 - 2000**

LEVEL	1991	1992	1993	1994	1995	1996	1997	1998	1999	2000
Undergraduate	22.1	21.8	21.8	21.9	21.6	21.4	21.4	21.3	21.6	21.6
Graduate	32.7	33.7	33.7	34.5	34.1	32.7	33.5	32.5	33.5	34.3

**UNDERGRADUATE HEADCOUNT ENROLLMENT
BY AGE OF STUDENTS
FALL 1999**

Age	Winthrop		State	Winthrop	State	Winthrop		State	Winthrop	State
	FT #	FT %	FT %	Cum FT %	Cum FT %	PT #	PT %	PT %	Cum PT %	Cum PT %
under 18	16	0.4%	0.8%	0.4%	0.8%	220	32.8%	13.9%	32.8%	13.9%
18 - 19	1,547	39.3%	38.9%	39.7%	39.6%	46	6.9%	6.2%	39.6%	20.1%
20 - 21	1,431	36.3%	35.4%	76.0%	75.1%	29	4.3%	11.2%	44.0%	31.3%
22 - 24	679	17.2%	17.3%	93.2%	92.3%	76	11.3%	19.6%	55.3%	50.9%
25 - 29	148	3.8%	4.5%	97.0%	96.8%	101	15.1%	16.0%	70.3%	66.9%
30 - 34	48	1.2%	1.4%	98.2%	98.2%	48	7.2%	9.8%	77.5%	76.7%
35 - 39	34	0.9%	0.8%	99.1%	99.0%	56	8.3%	7.6%	85.8%	84.3%
40 - 49	29	0.7%	0.8%	99.8%	99.7%	59	8.8%	9.8%	94.6%	94.1%
50 - 64	8	0.2%	0.2%	100.0%	99.9%	31	4.6%	3.9%	99.3%	98.0%
65 and older	0	0.0%	0.0%	100.0%	99.9%	5	0.7%	1.9%	100.0%	99.8%
Unknown	0	0.0%	0.1%	100.0%	100.0%	0	0.0%	0.2%	100.0%	100.0%
Total	3,940	100.0%	100.0%	100.0%	100.0%	671	100.0%	100.0%	100.0%	100.0%

Note: State percentiles are for all S.C. Public Senior Institutions.

**UNDERGRADUATE STUDENTS AGE 25 AND OLDER
FALL 1994-2000**

	1994	1995	1996	1997	1998	1999	2000
Number	528	544	535	468	527	550	547
Percent	13.11%	13.16%	12.79%	11%	12.14%	11.93%	11.73%

**GRADUATE HEADCOUNT ENROLLMENT
BY AGE OF STUDENTS
FALL 1999**

Age	Winthrop		State	Winthrop	State	Winthrop		State	Winthrop	State
	FT #	FT %	FT %	Cum FT %	Cum FT %	PT #	PT %	PT %	Cum PT %	Cum PT %
under 18	0	0.0%	0.0%	0.0%	0.0%	0	0.0%	0.0%	0.0%	0.0%
18 - 19	0	0.0%	0.0%	0.0%	0.0%	0	0.0%	0.0%	0.0%	0.0%
20 - 21	2	0.7%	1.9%	0.7%	1.9%	1	0.1%	0.1%	0.1%	0.1%
22 - 24	89	31.7%	34.8%	32.4%	36.7%	202	21.3%	10.2%	21.4%	10.3%
25 - 29	106	37.7%	35.0%	70.1%	71.7%	212	22.4%	24.2%	43.8%	34.5%
30 - 34	30	10.7%	13.6%	80.8%	85.4%	123	13.0%	14.3%	56.8%	48.8%
35 - 39	28	10.0%	6.2%	90.7%	91.6%	85	9.0%	12.2%	65.7%	61.0%
40 - 49	24	8.5%	6.6%	99.3%	98.2%	217	22.9%	25.7%	88.6%	86.7%
50 - 64	1	0.4%	1.6%	99.6%	99.8%	103	10.9%	12.8%	99.5%	99.5%
65 and older	1	0.4%	0.0%	100.0%	99.8%	5	0.5%	0.3%	100.0%	99.8%
Unknown	0	0.0%	0.2%	100.0%	100.0%	1	0.1%	0.2%	100.1%	100.0%
Total	281	100.0%	100.0%	100.0%	100.0%	948	100.0%	100.0%	100.0%	100.0%

Note: State percentiles are for all S.C. Public Senior Institutions.

HEADCOUNT ENROLLMENT BY CLASS & SEMESTER

FALL

LEVEL / CLASS	1990	1991	1992	1993	1994	1995	1996	1997	1998	1999	2000
Undergraduate	4,173	4,094	4,107	4,065	4,026	4,133	4,182	4,294	4,340	4,611	4,650
New Freshmen	622	662	805	769	744	878	819	912	836	971	905
Other Freshman	166	170	140	208	141	140	152	146	142	162	199
Sophomore	1,218	983	892	1,006	1,032	975	1,043	1,028	1,121	1,099	1,146
Junior	966	1,095	969	861	921	941	901	918	910	974	1,039
Senior	982	952	1,078	987	915	1,006	999	993	1,025	1,096	1,097
UG Special	219	232	223	234	273	193	268	297	306	309	264
Graduate	931	924	918	1,042	1,138	1,175	1,220	1,280	1,251	1,229	1,412
Total	5,104	5,018	5,025	5,107	5,164	5,308	5,402	5,574	5,591	5,840	6,062

SPRING

LEVEL / CLASS	1991	1992	1993	1994	1995	1996	1997	1998	1999	2000	2001
Undergraduate	3,730	3,715	3,653	3,620	3,613	3,798	3,748	3,885	3,984	4,182	4,337
Freshman	636	664	781	852	686	772	752	813	754	848	831
Sophomore	1,053	844	790	841	878	874	926	954	1,010	960	1,012
Junior	968	1,058	898	847	978	913	887	929	926	1,043	1,056
Senior	985	1,029	1,090	1,023	981	1,051	1,067	1,042	1,111	1,091	1,180
UG Special	88	120	94	57	90	188	116	147	183	240	258
Graduate	1,151	1,202	1,317	1,302	1,749	1,402	1,121	1,002	957	947	937
Total	4,881	4,917	4,970	4,922	5,362	5,200	4,869	4,887	4,941	5,129	5,274

SUMMER

LEVEL / CLASS	1990	1991	1992	1993	1994	1995	1996	1997	1998	1999	2000
Undergraduate	1,451	1,312	1,384	1,242	1,179	1,108	1,103	1,064	1,049	1,142	1,176
Freshman	46	31	31	31	29	24	21	31	23	32	22
Sophomore	242	205	181	161	147	159	138	152	156	175	167
Junior	393	383	373	299	318	264	267	275	282	325	338
Senior	618	548	677	653	586	564	570	528	511	528	580
UG Special	152	145	122	98	99	97	107	78	77	82	69
Graduate	981	1,201	1,145	1,219	1,438	1,302	1,304	1,124	1,352	1,087	1,006
Total	2,432	2,513	2,529	2,461	2,617	2,410	2,407	2,188	2,401	2,229	2,182

**FULL-TIME/PART-TIME HEADCOUNT
ENROLLMENT AND CREDIT HOUR PRODUCTION
FALL 1991 - FALL 2000**

LEVEL	1991		1992		1993		1994		1995	
	HC	CHP	HC	CHP	HC	CHP	HC	CHP	HC	CHP
Undergraduate	4,094	56,000	4,107	55,777	4,065	55,805	4,026	54,582	4,133	56,647
Full-Time	3,521	52,972	3,507	52,539	3,395	52,927	3,356	51,388	3,580	53,714
Part-Time	573	3,028	600	3,238	670	2,878	670	3,194	553	2,933
Graduate	924	5,866	918	5,637	1,042	6,214	1,138	6,257	1,175	6,539
Full-Time	315	3,445	307	3,290	342	3,774	325	3,520	323	3,423
Part-Time	609	2,421	611	2,347	700	2,440	813	2,737	852	3,116

LEVEL	1996		1997		1998		1999		2000	
	HC	CHP	HC	CHP	HC	CHP	HC	CHP	HC	CHP
Undergraduate	4,182	56,490	4,294	58,518	4,340	59,049	4,611	62,943	4,650	64,354
Full-Time	3,585	53,494	3,653	55,241	3,660	55,698	3,940	59,566	4,032	61,159
Part-Time	597	2,996	641	3,277	680	3,351	671	3,377	618	3,195
Graduate	1,220	6,694	1,280	6,524	1,251	6,187	1,229	6,112	1,412	7,644
Full-Time	317	3,335	267	2,843	251	2,636	281	2,870	289	2,978
Part-Time	903	3,359	1,013	3,681	1,000	3,551	948	3,242	1,123	4,666

Note: Headcount and CHP by classification of student.

**RESIDENCE HALL ENROLLMENT
COMPARED TO HEADCOUNT ENROLLMENT
BY CLASS
FALL 2000**

CLASS LEVEL	MALE RESIDENTS	FEMALE RESIDENTS	TOTAL RESIDENTS	HEADCOUNT ENROLLMENT	% RESIDENTS/ HEADCOUNT
Undergraduates	581	1,571	2,152	4,650	46.3%
New Freshmen	232	583	815	898	90.8%
Other Freshmen	17	47	64	206	31.1%
Sophomore	165	496	661	1,146	57.7%
Junior	101	254	355	1,039	34.2%
Senior	58	183	241	1,097	22.0%
Specials	8	8	16	264	6.1%
Graduates	7	16	23	1,412	1.6%
Grand Total	588	1,587	2,175	6,062	35.9%

FALL 1999

CLASS LEVEL	MALE RESIDENTS	FEMALE RESIDENTS	TOTAL RESIDENTS	HEADCOUNT ENROLLMENT	% RESIDENTS/ HEADCOUNT
Undergraduates	521	1,638	2,159	4,611	46.8%
New Freshmen	203	671	874	971	90.0%
Other Freshmen	30	33	63	162	38.9%
Sophomore	124	460	584	1,099	53.1%
Junior	95	274	369	974	37.9%
Senior	65	188	253	1,096	23.1%
Specials	4	12	16	309	5.2%
Graduates	4	15	19	1,229	1.5%
Grand Total	525	1,653	2,178	5,840	37.3%

**UNDERGRADUATE
RESIDENCE/NON-RESIDENCE HALL ENROLLMENT
FALL 1991 - FALL 2000**

RESIDENCY	1991	1992	1993	1994	1995	1996	1997	1998	1999	2000
Residence Hall	1,928	1,863	1,857	1,809	1,982	1,961	2,054	2,035	2,159	2,152
% of Total	46.2%	45.4%	45.7%	44.9%	48.0%	46.9%	47.8%	46.9%	46.8%	46.3%
Non-Residence Hall	2,245	2,244	2,208	2,217	2,151	2,221	2,240	2,305	2,452	2,498
% of Total	53.8%	54.6%	54.3%	55.1%	52.0%	53.1%	52.2%	53.1%	53.2%	53.7%
Total UG Enrollment	4,173	4,107	4,065	4,026	4,133	4,182	4,294	4,340	4,611	4,650

**HEADCOUNT ENROLLMENT
BY STATE OF ORIGIN
FALL 1990 - FALL 2000**

YEAR	S.C. RESIDENTS						OUT-OF-STATE RESIDENTS						TOTAL STUDENTS					
	UG		GRAD		TOTAL		UG		GRAD		TOTAL		UG		GRAD		TOTAL	
	#	%	#	%	#	%	#	%	#	%	#	%	#	%	#	%	#	%
1990	3,709	85.1%	647	14.9%	4,356	85.3%	464	62.0%	284	38.0%	748	14.7%	4,173	81.8%	931	18.2%	5,104	100%
1991	3,580	84.8%	642	15.2%	4,222	84.1%	514	64.6%	282	35.4%	796	15.9%	4,094	81.6%	924	18.4%	5,018	100%
1992	3,571	85.3%	614	14.7%	4,185	83.3%	536	63.8%	304	36.2%	840	16.7%	4,107	81.7%	918	18.3%	5,025	100%
1993	3,490	82.6%	737	17.4%	4,227	82.8%	575	65.3%	305	34.7%	880	17.2%	4,065	79.6%	1,042	20.4%	5,107	100%
1994	3,438	81.1%	802	18.9%	4,240	82.1%	588	63.6%	336	36.4%	924	17.9%	4,026	78.0%	1,138	22.0%	5,164	100%
1995	3,499	80.7%	836	19.3%	4,335	81.7%	634	65.2%	339	34.8%	973	18.3%	4,133	77.9%	1,175	22.1%	5,308	100%
1996	3,549	80.0%	885	20.0%	4,434	82.1%	633	65.4%	335	34.6%	968	17.9%	4,182	77.4%	1,220	22.6%	5,402	100%
1997	3,643	78.8%	978	21.2%	4,621	82.9%	651	68.3%	302	31.7%	953	17.1%	4,294	77.0%	1,280	23.0%	5,574	100%
1998	3,775	79.1%	998	20.9%	4,773	85.4%	565	69.1%	253	30.9%	818	14.6%	4,340	77.6%	1,251	22.4%	5,591	100%
1999	4,024	80.3%	990	19.7%	5,014	85.9%	587	71.1%	239	28.9%	826	14.1%	4,611	79.0%	1,229	21.0%	5,840	100%
2000	4,066	77.8%	1157	22.2%	5,223	86.8%	538	67.8%	255	32.2%	793	13.2%	4,604	76.5%	1,412	23.5%	6,016	100%

**COUNTRY OF ORIGIN OF INTERNATIONAL STUDENTS
FALL 1996 - FALL 2000**

COUNTRY	FALL 1996			FALL 1997			FALL 1998			FALL 1999			FALL 2000			% of 5 Year Total		
	UG	G	Tot	UG	G	Tot	UG	G	Tot	UG	G	Tot	UG	G	Tot	UG	G	Total
Albania	1	0	1	0	0	0	0	0	0	0	0	0	0	0	0	0.24%	0.00%	0.18%
Australia	1	0	1	1	0	1	0	0	0	0	0	0	0	0	0	0.48%	0.00%	0.37%
Austria	0	0	0	0	0	0	0	0	0	2	0	2	2	0	2	0.96%	0.00%	0.74%
Bahamas	0	1	1	0	0	0	0	0	0	0	0	0	0	1	1	0.00%	1.60%	0.37%
Belgium	0	0	0	0	0	0	1	0	1	0	0	0	0	0	0	0.24%	0.00%	0.18%
Brazil	6	0	6	10	0	10	8	0	8	11	0	11	9	1	10	10.53%	0.80%	8.29%
Bulgaria	1	1	2	1	0	1	1	0	1	5	0	5	5	0	5	3.11%	0.80%	2.58%
Canada	12	2	14	18	1	19	17	1	18	19	2	21	17	3	20	19.86%	7.20%	16.94%
China, Republic of	1	3	4	1	2	3	1	0	1	1	0	1	1	2	3	1.20%	5.60%	2.21%
Colombia	1	0	1	0	1	1	2	1	3	3	1	4	3	2	5	2.15%	4.00%	2.58%
Cyprus	1	0	1	0	0	0	0	0	0	0	0	0	0	0	0	0.24%	0.00%	0.18%
Estonia	0	0	0	0	0	0	1	0	1	0	0	0	1	0	1	0.48%	0.00%	0.37%
France	6	6	12	6	9	15	4	7	11	5	2	7	4	4	8	5.98%	22.40%	9.76%
Gabon	0	1	1	0	0	0	1	0	1	2	0	2	1	1	2	0.96%	1.60%	1.10%
Germany	2	0	2	2	0	2	1	0	1	2	0	2	3	0	3	2.39%	0.00%	1.84%
Greece	1	0	1	1	0	1	1	0	1	0	0	0	0	0	0	0.48%	0.80%	0.55%
Guinea	0	0	0	0	0	0	0	0	0	1	0	1	0	0	0	0.24%	0.00%	0.18%
Haiti	1	0	1	2	0	2	2	0	2	0	0	0	1	0	1	1.44%	0.00%	1.10%
Hong Kong	3	0	3	1	1	2	0	1	1	0	0	0	0	0	0	0.96%	1.60%	1.10%
Hungary	1	0	1	1	0	1	1	0	1	1	1	2	1	1	2	1.20%	1.60%	1.29%
Iceland	0	0	0	0	0	0	0	0	0	1	0	1	2	0	2	0.72%	0.00%	0.55%
India	2	5	7	1	2	3	1	2	3	3	1	4	4	1	5	2.63%	8.80%	4.05%
Iran	0	0	0	0	0	0	1	0	1	0	0	0	0	0	0	0.24%	0.00%	0.18%
Ireland	1	0	1	0	0	0	1	0	1	1	0	1	1	0	1	0.96%	0.00%	0.74%
Israel	1	0	1	0	0	0	0	0	0	0	0	0	0	0	0	0.24%	0.00%	0.18%
Italy	0	1	1	0	0	0	0	0	0	0	0	0	0	0	0	0.00%	0.80%	0.18%
Ivory Coast	0	0	0	0	0	0	1	0	1	1	0	1	1	0	1	0.72%	0.00%	0.55%
Jamaica	0	0	0	0	0	0	0	0	0	0	0	0	1	0	1	0.24%	0.00%	0.18%
Japan	5	1	6	4	1	5	2	1	3	2	2	4	1	1	2	3.35%	4.80%	3.68%
Kenya	1	0	1	0	0	0	0	0	0	0	0	0	1	0	1	0.48%	0.00%	0.37%
Korea, Republic of	0	1	1	0	1	1	0	0	0	1	0	1	0	0	0	0.24%	1.60%	0.55%
Liberia	0	0	0	0	0	0	1	0	1	0	0	0	0	0	0	0.24%	0.00%	0.18%
Lithuania	0	0	0	0	0	0	0	0	0	0	1	1	0	1	1	0.00%	1.60%	0.37%
Malaysia	4	2	6	3	0	3	1	0	1	0	0	0	0	1	1	1.91%	2.40%	2.03%
Mauritius	1	0	1	1	0	1	1	0	1	1	0	1	0	0	0	0.96%	0.00%	0.74%
Mexico	0	1	1	0	0	0	0	0	0	0	0	0	0	0	0	0.00%	0.80%	0.18%
Monaco	0	0	0	0	0	0	1	0	1	0	0	0	0	0	0	0.24%	0.00%	0.18%
Morocco	0	0	0	0	1	1	0	0	0	1	0	1	0	1	1	0.24%	1.60%	0.55%
Netherlands/Antilles	1	0	1	0	0	0	0	0	0	0	0	0	0	0	0	0.24%	0.00%	0.18%
New Zealand	1	0	1	0	0	0	0	0	0	0	0	0	1	0	1	0.48%	0.00%	0.37%
Nigeria	0	0	0	0	0	0	0	1	1	1	2	3	1	1	2	0.48%	3.20%	1.10%
Norway	0	1	1	0	0	0	0	0	0	3	0	3	1	0	1	0.96%	0.80%	0.92%
Peru	3	1	4	3	0	3	0	0	0	1	1	2	1	1	2	1.91%	2.40%	2.03%
Philippines	0	0	0	0	0	0	0	0	0	1	1	2	1	1	2	0.48%	1.60%	0.74%
Poland	0	0	0	2	0	2	1	0	1	0	0	0	1	0	1	0.96%	0.00%	0.74%
Portugal	1	0	1	1	0	1	2	0	2	0	0	0	0	0	0	0.96%	0.00%	0.74%
Romania	0	1	1	0	0	0	0	0	0	0	0	0	0	0	0	0.00%	0.80%	0.18%
Saudi Arabia	1	0	1	1	0	1	1	0	1	1	0	1	1	0	1	1.20%	0.00%	0.92%
Sierra Leone	1	0	1	0	0	0	0	0	0	0	0	0	0	0	0	0.24%	0.00%	0.18%
Slovakia	0	1	1	0	0	0	0	1	1	0	1	1	0	0	0	0.00%	2.40%	0.55%
South Africa	2	2	4	1	1	2	1	0	1	0	0	0	1	0	1	1.20%	2.40%	1.47%
Spain	9	0	9	12	2	14	13	0	13	6	1	7	10	1	11	11.96%	3.20%	9.94%
Sri Lanka	0	0	0	0	0	0	0	0	0	0	0	0	1	0	1	0.24%	0.00%	0.18%
Sweden	4	0	4	3	0	3	6	1	7	4	0	4	5	0	5	5.26%	0.80%	4.24%
Taiwan	1	0	1	0	0	0	0	0	0	1	0	1	1	0	1	0.72%	0.00%	0.55%
Thailand	0	3	3	0	1	1	0	0	0	0	0	0	0	0	0	0.00%	3.20%	0.74%
Trinidad/Tobago	1	0	1	1	0	1	0	0	0	0	0	0	0	0	0	0.48%	0.00%	0.37%
Ukraine	0	1	1	1	0	1	1	0	1	1	0	1	2	0	2	1.20%	0.80%	1.10%
United Kingdom	6	0	6	3	0	3	3	0	3	1	2	3	4	2	6	4.07%	3.20%	3.87%
Venezuela	0	0	0	0	1	1	0	1	1	0	1	1	0	2	2	0.00%	4.00%	0.92%
Yugoslavia	0	0	0	0	0	0	0	0	0	0	1	1	0	0	0	0.00%	0.80%	0.18%
Zimbabwe	0	0	0	0	0	0	0	0	0	1	0	1	1	0	0	0.48%	0.00%	0.18%
TOTAL	84	35	119	81	24	105	78	18	96	84	20	104	91	28	119	100.0%	100.0%	100.0%

* Permanent residents not counted.

**GEOGRAPHICAL DISTRIBUTION OF STUDENTS
BY STATE
FALL 1996 - FALL 2000**

STATE	FALL 1996			FALL 1997			FALL 1998			FALL 1999			FALL 2000			% of 5 Year Total		
	UG	G	Total	UG	G	Total	UG	G	Total	UG	G	Total	UG	G	Total	UG	G	Total
Alabama	1	0	1	1	1	2	3	1	4	4	0	4	1	0	1	0.05%	0.03%	0.04%
Alaska	0	0	0	0	0	0	0	0	0	0	0	0	0	0	0	0.00%	0.00%	0.00%
Arizona	0	0	0	1	0	1	1	1	2	1	0	1	1	0	1	0.02%	0.02%	0.02%
Arkansas	0	0	0	0	0	0	0	0	0	0	1	1	0	0	0	0.00%	0.02%	0.00%
California	7	1	8	6	1	7	5	1	6	5	2	7	4	1	5	0.12%	0.09%	0.12%
Colorado	2	0	2	1	0	1	2	0	2	3	0	3	2	0	2	0.05%	0.00%	0.04%
Connecticut	3	0	3	3	1	4	1	0	1	4	0	4	4	1	5	0.07%	0.03%	0.06%
Delaware	1	0	1	0	0	0	2	0	2	2	0	2	1	0	1	0.03%	0.00%	0.02%
Florida	64	4	68	72	2	74	60	7	67	72	3	75	71	4	75	1.54%	0.31%	1.26%
Georgia	79	5	84	75	5	80	57	6	63	64	6	70	62	8	70	1.53%	0.47%	1.29%
Hawaii	1	0	1	0	0	0	0	0	0	0	0	0	0	0	0	0.00%	0.00%	0.00%
Idaho	0	0	0	0	0	0	0	0	0	1	0	1	1	0	1	0.01%	0.00%	0.01%
Illinois	0	1	1	1	1	2	4	1	5	6	0	6	5	0	5	0.07%	0.05%	0.07%
Indiana	2	1	3	4	1	5	4	1	5	5	0	5	4	1	5	0.09%	0.06%	0.08%
Iowa	0	1	1	1	0	1	2	0	2	0	0	0	0	0	0	0.01%	0.02%	0.01%
Kansas	1	0	1	0	0	0	0	0	0	0	0	0	1	0	1	0.01%	0.00%	0.01%
Kentucky	5	0	5	6	0	6	4	1	5	6	1	7	7	1	8	0.13%	0.05%	0.11%
Louisiana	0	0	0	2	0	2	2	0	2	4	0	4	5	1	6	0.06%	0.02%	0.05%
Maine	2	0	2	2	0	2	2	0	2	1	0	1	0	1	1	0.03%	0.02%	0.03%
Maryland	44	0	44	49	1	50	37	1	38	39	2	41	39	4	43	0.94%	0.13%	0.76%
Massachusetts	7	0	7	5	0	5	4	0	4	4	0	4	7	1	8	0.12%	0.02%	0.10%
Michigan	17	0	17	12	0	12	11	0	11	14	0	14	7	1	8	0.28%	0.02%	0.22%
Minnesota	7	0	7	6	0	6	5	0	5	4	0	4	2	0	2	0.11%	0.00%	0.08%
Mississippi	1	0	1	0	0	0	0	0	0	1	0	1	1	0	1	0.01%	0.00%	0.01%
Missouri	4	0	4	4	0	4	2	0	2	3	0	3	1	0	1	0.06%	0.00%	0.05%
Nebraska	1	0	1	1	0	1	1	1	2	1	1	2	0	2	2	0.02%	0.06%	0.03%
Nevada	1	0	1	1	0	1	0	0	0	0	0	0	0	0	0	0.01%	0.00%	0.01%
New Hampshire	1	1	2	2	1	3	3	1	4	2	3	5	2	2	4	0.05%	0.13%	0.06%
New Jersey	25	0	25	21	2	23	21	4	25	18	2	20	15	2	17	0.45%	0.16%	0.39%
New Mexico	2	0	2	0	1	1	0	0	0	0	1	1	3	0	3	0.02%	0.03%	0.02%
New York	30	3	33	34	3	37	18	4	22	25	2	27	25	3	28	0.60%	0.23%	0.52%
North Carolina	128	273	401	133	247	380	112	189	301	98	171	269	103	169	272	2.60%	16.41%	5.70%
Ohio	28	1	29	30	2	32	34	2	36	29	1	30	23	5	28	0.65%	0.17%	0.54%
Oklahoma	2	0	2	2	0	2	1	0	1	0	1	1	0	0	0	0.02%	0.02%	0.02%
Oregon	0	1	1	0	0	0	1	0	1	3	0	3	1	0	1	0.02%	0.02%	0.02%
Pennsylvania	11	0	11	17	1	18	20	1	21	16	1	17	20	3	23	0.38%	0.09%	0.32%
Rhode Island	1	0	1	2	0	2	1	0	1	1	0	1	2	0	2	0.03%	0.00%	0.02%
South Carolina	3,549	885	4,434	3,643	978	4,621	3,775	998	4,773	4,024	990	5,014	4,066	1,157	5,223	86.32%	78.35%	84.53%
South Dakota	0	0	0	1	0	1	0	0	0	0	0	0	0	0	0	0.00%	0.00%	0.00%
Tennessee	7	0	7	8	0	8	6	0	6	5	2	7	7	1	8	0.15%	0.05%	0.13%
Texas	7	0	7	5	0	5	5	1	6	3	2	5	3	1	4	0.10%	0.06%	0.09%
Vermont	2	0	2	2	0	2	2	0	2	2	0	2	3	0	3	0.05%	0.00%	0.04%
Utah	1	0	1	3	0	3	1	0	1	1	0	1	0	0	0	0.03%	0.00%	0.02%
Virginia	47	7	54	47	5	52	44	7	51	45	9	54	45	8	53	1.03%	0.56%	0.93%
Washington	0	0	0	1	0	1	1	0	1	1	0	1	2	0	2	0.02%	0.00%	0.02%
West Virginia	4	1	5	3	1	4	2	0	2	4	1	5	7	1	8	0.09%	0.06%	0.08%
Wisconsin	3	0	3	5	0	5	4	1	5	2	1	3	3	1	4	0.08%	0.05%	0.07%
Wyoming	0	0	0	0	0	0	0	0	0	0	0	0	1	0	1	0.00%	0.00%	0.00%
Total U.S. States	4,098	1,185	5,283	4,212	1,254	5,466	4,260	1,229	5,489	4,523	1,203	5,726	4,557	1,379	5,936	98.07%	97.78%	98.00%
Dist. of Columbia	0	0	0	0	0	0	0	0	0	0	0	0	1	0	1	0.00%	0.00%	0.00%
International	84	35	119	81	24	105	78	18	96	84	20	104	91	28	119	1.89%	1.96%	1.91%
Puerto Rico	0	0	0	1	0	1	0	0	0	1	0	1	0	0	0	0.01%	0.00%	0.01%
Virgin Islands of the U.S	0	0	0	0	0	0	0	0	0	0	1	1	0	1	1	0.00%	0.03%	0.01%
Unknown	0	0	0	0	2	2	2	4	6	3	5	8	0	4	4	0.02%	0.23%	0.07%
Grand Total	4,182	1,220	5,402	4,294	1,280	5,574	4,340	1,251	5,591	4,611	1,229	5,840	4,649	1,412	6,061	100.0%	100.0%	100.0%

**GEOGRAPHICAL DISTRIBUTION OF STUDENTS
BY S.C. COUNTY
FALL 1996 - FALL 2000**

COUNTY	FALL 1996			FALL 1997			FALL 1998			FALL 1999			FALL 2000			% of 5 Year Total		
	UG	G	Total	UG	G	Total	UG	G	Total	UG	G	Total	UG	G	Total	UG	G	Total
Abbeville	5	2	7	5	1	6	5	1	6	8	4	12	9	3	12	0.14%	0.17%	0.15%
Aiken	62	19	81	66	11	77	85	9	94	98	4	102	108	5	113	1.90%	0.75%	1.64%
Allendale	6	0	6	5	0	5	5	0	5	7	0	7	8	2	10	0.14%	0.03%	0.12%
Anderson	90	3	93	78	7	85	73	21	94	74	11	85	66	10	76	1.73%	0.81%	1.52%
Bamberg	11	0	11	10	0	10	7	0	7	4	0	4	3	1	4	0.16%	0.02%	0.13%
Barnwell	13	0	13	14	0	14	9	2	11	13	0	13	10	5	15	0.27%	0.11%	0.23%
Beaufort	49	4	53	52	10	62	59	30	89	56	21	77	66	23	89	1.28%	1.38%	1.30%
Berkeley	72	3	75	77	6	83	75	9	84	82	10	92	88	4	92	1.78%	0.50%	1.50%
Calhoun	9	1	10	8	2	10	8	1	9	8	0	8	6	0	6	0.18%	0.06%	0.15%
Charleston	132	15	147	161	18	179	172	23	195	188	18	206	197	19	216	3.85%	1.45%	3.31%
Cherokee	39	9	48	32	5	37	28	9	37	35	9	44	29	29	58	0.74%	0.95%	0.79%
Chester	133	37	170	138	28	166	133	29	162	140	36	176	113	77	190	2.98%	3.24%	3.03%
Chesterfield	75	12	87	64	41	105	79	20	99	83	36	119	68	20	88	1.67%	2.02%	1.75%
Clarendon	13	15	28	13	6	19	14	4	18	15	9	24	17	10	27	0.33%	0.69%	0.41%
Colleton	7	1	8	8	2	10	15	5	20	25	1	26	29	1	30	0.38%	0.16%	0.33%
Darlington	34	5	39	39	12	51	50	10	60	53	8	61	57	13	70	1.06%	0.75%	0.99%
Dillon	19	10	29	16	19	35	18	10	28	16	11	27	16	11	27	0.39%	0.95%	0.51%
Dorchester	63	1	64	58	2	60	62	4	66	81	3	84	88	5	93	1.59%	0.23%	1.29%
Edgefield	13	7	20	9	8	17	7	6	13	9	4	13	6	5	11	0.20%	0.47%	0.26%
Fairfield	26	7	33	37	10	47	36	13	49	24	18	42	19	16	35	0.64%	1.00%	0.72%
Florence	74	33	107	69	22	91	69	20	89	87	23	110	88	14	102	1.75%	1.75%	1.75%
Georgetown	15	7	22	16	11	27	28	6	34	22	5	27	36	4	40	0.53%	0.52%	0.53%
Greenville	295	13	308	290	20	310	281	23	304	272	38	310	293	32	325	6.48%	1.97%	5.47%
Greenwood	33	18	51	38	12	50	35	30	65	42	30	72	40	21	61	0.85%	1.74%	1.05%
Hampton	13	0	13	7	0	7	8	0	8	7	3	10	8	5	13	0.19%	0.13%	0.18%
Horry	48	68	116	57	36	93	69	39	108	74	36	110	74	39	113	1.46%	3.41%	1.90%
Jasper	8	0	8	6	1	7	5	1	6	5	1	6	6	1	7	0.14%	0.06%	0.12%
Kershaw	54	9	63	60	7	67	83	26	109	80	24	104	78	45	123	1.61%	1.74%	1.64%
Lancaster	175	50	225	200	27	227	150	44	194	162	39	201	135	47	182	3.72%	3.24%	3.61%
Laurens	32	3	35	36	4	40	42	8	50	37	7	44	43	5	48	0.86%	0.42%	0.76%
Lee	10	0	10	11	2	13	11	1	12	12	2	14	14	5	19	0.26%	0.16%	0.24%
Lexington	170	43	213	179	49	228	178	81	259	193	60	253	214	72	286	4.23%	4.77%	4.35%
Marion	15	1	16	14	11	25	27	3	30	24	5	29	25	3	28	0.48%	0.36%	0.45%
Marlboro	4	0	4	4	0	4	20	5	25	21	5	26	5	1	6	0.24%	0.17%	0.23%
McCormick	28	16	44	32	10	42	5	0	5	4	0	4	25	2	27	0.43%	0.44%	0.43%
Newberry	21	4	25	26	19	45	26	5	31	24	4	28	20	3	23	0.53%	0.55%	0.53%
Oconee	24	2	26	36	15	51	33	39	72	41	33	74	41	13	54	0.79%	1.60%	0.97%
Orangeburg	48	7	55	47	26	73	54	7	61	53	5	58	53	15	68	1.16%	0.94%	1.11%
Pickens	56	4	60	50	5	55	43	10	53	37	11	48	44	7	51	1.04%	0.58%	0.94%
Richland	219	33	252	230	44	274	234	49	283	286	53	339	324	58	382	5.86%	3.71%	5.37%
Saluda	4	0	4	9	3	12	5	2	7	5	0	5	8	2	10	0.14%	0.11%	0.13%
Spartanburg	155	18	173	160	26	186	169	16	185	165	22	187	155	23	178	3.64%	1.64%	3.19%
Sumter	66	4	70	78	25	103	84	23	107	137	7	144	113	13	126	2.17%	1.13%	1.93%
Union	29	3	32	29	5	34	29	4	33	35	5	40	32	8	40	0.70%	0.39%	0.63%
Williamsburg	18	21	39	18	13	31	17	3	20	12	3	15	12	4	16	0.35%	0.69%	0.43%
York	1,064	377	1,441	1,051	397	1,448	1,130	347	1,477	1,168	366	1,534	1,177	456	1,633	25.32%	30.40%	26.46%
Total S.C.	3,549	885	4,434	3,643	978	4,621	3,775	998	4,773	4,024	990	5,014	4,066	1,157	5,223	86.32%	78.35%	84.53%
Out-of-State	549	300	849	570	278	848	487	235	722	503	219	722	492	227	719	11.78%	19.70%	13.56%
International	84	35	119	81	24	105	78	18	96	84	20	104	91	28	119	1.89%	1.96%	1.91%
Grand Total	4,182	1,220	5,402	4,294	1,280	5,574	4,340	1,251	5,591	4,611	1,229	5,840	4,649	1,412	6,061	100.0%	100.0%	100.0%

UNDERGRADUATE HEADCOUNT ENROLLMENT FALL 1996 - FALL 2000

COLLEGE / DEGREE PROGRAMS	1996	1997	1998	1999	2000	% OF 5 YEAR TOTAL	99 TO 00 % DIFF.	96 TO 00 % DIFF.
ARTS & SCIENCES	1,568	1,607	1,626	1,638	1,710	36.6%	4.4%	9.1%
Biology	266	249	228	233	274	5.6%	17.6%	3.0%
Chemistry	27	44	59	60	54	1.1%	-10.0%	100.0%
English	134	141	136	107	105	2.8%	-1.9%	-21.6%
General Communication Disorders	*	12	55	86	88	1.1%	2.3%	100.0%
History	126	139	139	136	132	3.0%	-2.9%	4.8%
Human Nutrition	79	66	55	46	47	1.3%	2.2%	-40.5%
Integrated Marketing Communication	*	32	60	103	119	1.4%	15.5%	100.0%
Mass Communication	177	167	164	152	186	3.8%	22.4%	5.1%
Mathematics (B.A.)	24	18	19	17	14	0.4%	-17.6%	-41.7%
Mathematics (B.S.)	49	36	35	32	26	0.8%	-18.8%	-46.9%
Medical Technology	14	14	7	11	11	0.3%	0.0%	-21.4%
Modern Languages	41	47	55	44	37	1.0%	-15.9%	-9.8%
Philosophy & Religious Studies	19	15	23	18	19	0.4%	5.6%	0.0%
Political Science	123	133	110	127	131	2.8%	3.1%	6.5%
Pre-Engineering	12	12	10	14	10	0.3%	-28.6%	-16.7%
Psychology	221	212	216	230	235	5.0%	2.2%	6.3%
Science Communications	6	3	4	5	5	0.1%	0.0%	-16.7%
Social Work	136	137	140	139	121	3.0%	-12.9%	-11.0%
Sociology	57	76	89	87	92	1.8%	5.7%	61.4%
Speech**	57	54	22	5	4	0.6%	-20.0%	-93.0%
BUSINESS ADMINISTRATION	887	991	1,012	1,174	1,218	23.7%	3.7%	37.3%
Business Administration	796	876	876	927	912	19.7%	-1.6%	14.6%
Computer Science	91	83	76	97	104	2.0%	7.2%	14.3%
Integrated Marketing Communication	*	32	60	103	119	1.4%	15.5%	100.0%
Sport Management	*	*	*	47	83	0.6%	76.6%	100.0%
EDUCATION	778	745	749	792	812	17.4%	2.5%	4.4%
Business Education	23	25	20	13	8	0.4%	-38.5%	-65.2%
Early Childhood Education	181	164	164	166	187	3.9%	12.7%	3.3%
Elementary Education	317	319	311	339	336	7.3%	-0.9%	6.0%
Home Economics	7	2	**	**	**	0.0%	N/A	N/A
Family & Consumer Science	7	9	22	34	40	0.5%	17.6%	471.4%
Physical Education	90	97	115	90	88	2.2%	-2.2%	-2.2%
Special Education	153	129	117	103	70	2.6%	-32.0%	-54.2%
Sport Management	*	*	*	47	83	0.6%	76.6%	100.0%
VISUAL & PERFORMING ARTS	536	577	625	648	672	13.7%	3.7%	25.4%
Art (B.A.)	78	73	80	91	113	2.0%	24.2%	44.9%
Art (B.F.A.)	209	240	255	250	254	5.4%	1.6%	21.5%
Art History (B.A.)	11	9	11	10	9	0.2%	-10.0%	-18.2%
Dance	22	34	33	42	38	0.8%	-9.5%	72.7%
Music (B.A.)	47	38	49	53	52	1.1%	-1.9%	10.6%
Music Education (Choral)	32	33	40	36	35	0.8%	-2.8%	9.4%
Music Education (Instrumental)	39	46	51	51	49	1.1%	-3.9%	25.6%
Music (Performance)	36	28	21	19	24	0.6%	26.3%	-33.3%
Theatre	62	76	85	96	98	1.9%	2.1%	58.1%
PRE-NURSING	13	18	6	8	13	0.3%	62.5%	0.0%
PRE-MAJOR	454	446	459	487	427	10.2%	-12.3%	-5.9%
INTERDISCIPLINARY MAJORS	*	32	60	150	202	2.0%	34.7%	100.0%
Integrated Marketing Communication	*	32	60	103	119	1.4%	15.5%	100.0%
Sport Management	*	*	*	47	83	0.6%	76.6%	100.0%

Note: Counts include double majors and students working toward two degrees.

* New program

** Discontinued program

**UNDERGRADUATE HEADCOUNT ENROLLMENT
SPRING 1997 - SPRING 2001**

COLLEGE / DEGREE PROGRAMS	1997	1998	1999	2000	2001	% OF 5 YEAR TOTAL	00 TO 01 % DIFF.	97 TO 01 % DIFF.
ARTS & SCIENCES	1,457	1,523	1,549	1,617	1,634	37.7%	1.1%	12.1%
Biology	229	204	195	215	221	5.2%	2.8%	-3.5%
Chemistry	27	41	55	71	49	1.2%	-31.0%	81.5%
General Communication Disorders	*	24	67	92	85	1.3%	-7.6%	100.0%
English	121	129	119	106	95	2.8%	-10.4%	-21.5%
Govt. and Public Service	1	**	**	**	**	0.0%	0.0%	-100.0%
History	129	135	144	141	129	3.3%	-8.5%	0.0%
Human Nutrition	71	66	44	41	40	1.3%	-2.4%	-43.7%
Integrated Marketing Communication	8	47	79	102	124	1.7%	21.6%	1450.0%
Mass Communication	151	144	141	142	161	3.6%	13.4%	6.6%
Mathematics (B.A.)	22	23	20	18	13	0.5%	-27.8%	-40.9%
Mathematics (B.S.)	32	28	26	27	18	0.6%	-33.3%	-43.8%
Medical Technology	13	7	10	9	11	0.2%	22.2%	-15.4%
Modern Languages	47	53	52	45	36	1.1%	-20.0%	-23.4%
Philosophy & Religious Studies	18	18	23	23	27	0.5%	17.4%	50.0%
Political Science	119	116	131	120	144	3.1%	20.0%	21.0%
Pre-Engineering	9	9	6	9	7	0.2%	-22.2%	-22.2%
Psychology	200	218	210	227	243	5.3%	7.0%	21.5%
Science Communications	4	4	3	6	7	0.1%	16.7%	75.0%
Social Work	134	143	141	133	135	3.3%	1.5%	0.7%
Sociology	64	74	75	85	87	1.9%	2.4%	35.9%
Speech	58	40	8	5	2	0.5%	-60.0%	-96.6%
BUSINESS ADMINISTRATION	852	935	1,008	1,093	1,168	24.5%	6.9%	37.1%
Business Administration	768	821	856	849	883	20.2%	4.0%	15.0%
Computer Science	76	67	73	86	84	1.9%	-2.3%	10.5%
Integrated Marketing Communication	8	47	79	102	124	1.7%	21.6%	1450.0%
Sport Management	*	*	*	56	77	0.6%	37.5%	100.0%
EDUCATION	756	717	722	734	779	18.0%	6.1%	3.0%
Business Education	22	23	24	11	6	0.4%	-45.5%	-72.7%
Early Childhood Education	179	169	152	160	192	4.1%	20.0%	7.3%
Elementary Education	306	286	295	297	302	7.2%	1.7%	-1.3%
Home Economics	4	2	**	**	**	0.0%	0.0%	-100.0%
Family & Consumer Science (HEED)	8	15	24	38	48	0.6%	26.3%	500.0%
Physical Education	97	99	123	87	83	2.4%	-4.6%	-14.4%
Special Education	140	123	104	85	71	2.5%	-16.5%	-49.3%
Sport Management	*	*	*	56	77	0.6%	37.5%	100.0%
VISUAL & PERFORMING ARTS	496	551	585	589	589	13.6%	0.0%	18.8%
Art (B.A.)	75	66	60	78	89	1.8%	14.1%	18.7%
Art (B.F.A.)	186	221	245	224	223	5.3%	-0.4%	19.9%
Art History (B.A.)	11	12	10	14	12	0.3%	-14.3%	9.1%
Dance	28	28	30	36	38	0.8%	5.6%	35.7%
Music (B.A.)	39	37	41	50	41	1.0%	-18.0%	5.1%
Music Education (Choral)	31	36	37	33	33	0.8%	0.0%	6.5%
Music Education (Instrumental)	39	42	46	45	43	1.0%	-4.4%	10.3%
Music (Performance)	30	26	22	19	23	0.6%	21.1%	-23.3%
Theatre	57	83	94	90	87	2.0%	-3.3%	52.6%
PRE-NURSING	7	14	6	7	9	0.2%	28.6%	28.6%
PRE-MAJOR	251	258	282	376	360	7.4%	-4.3%	43.4%
INTERDISCIPLINARY MAJORS	8	47	79	158	201	2.4%	27.2%	2412.5%
Sport Management	*	*	*	56	77	0.6%	37.5%	100.0%
Integrated Marketing Communication	8	47	79	102	124	1.7%	21.6%	1450.0%

Note: Counts include double majors and students working toward two degrees.

* New program

** Discontinued program

**GRADUATE HEADCOUNT ENROLLMENT
FALL 1996 - FALL 2000**

COLLEGE / DEGREE PROGRAMS	1996	1997	1998	1999	2000	% OF 5-YEAR TOTAL	99 TO 00 % DIFF.	95 TO 00 % DIFF.
ARTS AND SCIENCES	178	161	145	145	127	11.8%	-12.4%	-28.7%
Biology	18	16	15	11	8	1.1%	-27.3%	-55.6%
English	23	20	12	15	10	1.3%	-33.3%	-56.5%
Human Nutrition	46	42	35	37	28	2.9%	-24.3%	-39.1%
History	13	10	8	13	16	0.9%	23.1%	23.1%
Liberal Arts	42	36	36	32	27	2.7%	-15.6%	-35.7%
Mathematics	4	5	8	5	4	0.4%	-20.0%	0.0%
School Psychology	24	22	22	23	25	1.8%	8.7%	4.2%
Spanish	8	10	9	9	9	0.7%	0.0%	12.5%
BUSINESS ADMINISTRATION	215	186	168	170	202	14.7%	18.8%	-6.0%
Business Administration	174	152	115	143	161	11.7%	12.6%	-7.5%
Executive MBA	41	34	53	27	41	3.1%	51.9%	0.0%
EDUCATION	279	320	300	231	319	22.7%	38.1%	14.3%
Business Education (MS)	22	5	12	5	***	0.7%	-100.0%	-100.0%
Business Education (MAT)	13	17	11	4	4	0.8%	0.0%	-69.2%
Counseling & Dev (Guidance)	57	50	42	38	54	3.8%	42.1%	-5.3%
Curriculum and Instruction	2	3	2	0	***	0.1%	0.0%	-100.0%
Educational Adm. & Supervision (MEd)*	26	39	40	23	13	2.2%	-43.5%	-50.0%
Educational Administration (EdS)	22	47	51	28	5	2.4%	-82.1%	-77.3%
Educational Leadership	**	**	**	14	69	1.3%	392.9%	100.0%
Educational Media***	29	32	20	11	***	1.4%	N/A	N/A
Elementary Education	14	19	10	16	22	1.3%	37.5%	57.1%
Family and Consumer Science	6	5	5	1	***	0.3%	-100.0%	-100.0%
Middle Level Education	**	**	**	**	13	0.2%	100.0%	100.0%
Physical Education	5	5	7	6	10	0.5%	66.7%	100.0%
Reading	19	22	22	24	57	2.3%	137.5%	200.0%
Secondary Education (MAT)	42	49	54	37	47	3.6%	27.0%	11.9%
Secondary Education (MEd)	8	10	8	12	10	0.8%	-16.7%	25.0%
Special Education	14	17	16	12	15	1.2%	25.0%	7.1%
VISUAL & PERFORMING ARTS	37	27	18	16	23	1.9%	43.8%	-37.8%
Art Education	10	12	7	2	2	0.5%	0.0%	-80.0%
Conducting	**	**	**	**	3	0.0%	100.0%	100.0%
Fine Arts	10	5	4	4	6	0.5%	50.0%	-40.0%
Music Education	7	2	3	4	5	0.3%	25.0%	-28.6%
Music Performance	10	8	4	6	7	0.5%	16.7%	-30.0%
UNDESIGNATED/UNASSIGNED	511	586	620	667	741	48.9%	11.1%	45.0%
TOTAL	1,220	1,280	1,251	1,229	1,412	100.0%	14.9%	15.7%

* MEd EDAS changed to MEd EDLD in Fall 1999

** New program

*** Discontinued program

**GRADUATE HEADCOUNT ENROLLMENT
SPRING 1997 - SPRING 2001**

COLLEGE / DEGREE PROGRAMS	1997	1998	1999	2000	2001	% OF 5-YEAR TOTAL	00 TO 01 % DIFF.	97 TO 01 % DIFF.
ARTS AND SCIENCES	177	161	140	156	132	15.4%	-15.4%	-25.4%
Biology	16	14	11	11	11	1.3%	0.0%	-31.3%
English	20	11	9	16	12	1.4%	-25.0%	-40.0%
Human Nutrition	56	56	44	47	37	4.8%	-21.3%	-33.9%
History	12	12	8	12	14	1.2%	16.7%	16.7%
Liberal Arts	40	32	31	34	19	3.1%	-44.1%	-52.5%
Mathematics	5	6	7	5	3	0.5%	-40.0%	-40.0%
School Psychology	23	21	22	23	25	2.3%	8.7%	8.7%
Spanish	5	9	8	8	11	0.8%	37.5%	120.0%
BUSINESS ADMINISTRATION	207	146	153	168	197	17.5%	17.3%	-4.8%
Business Administration	164	118	126	143	143	14.0%	0.0%	-12.8%
Executive MBA	43	28	27	25	35	3.2%	40.0%	-18.6%
EDUCATION	264	323	280	247	297	28.4%	20.2%	12.5%
Business Education (MS)	19	7	7	4	0	1.3%	-100.0%	-100.0%
Business Education (MAT)	7	15	5	0	0	4.8%	0.0%	-100.0%
Counseling & Dev (Guidance)	50	49	40	36	36	4.4%	0.0%	-28.0%
Curriculum and Instruction	4	3	1	0	0	3.2%	0.0%	-100.0%
Educational Adm. & Sup. (MEd)**	23	51	46	20	10	5.6%	-50.0%	-56.5%
Educational Administration (EdS)	23	52	37	14	1	6.2%	-92.9%	-95.7%
Educational Leadership	*	*	*	25	70	5.0%	180.0%	100.0%
Educational Media***	29	33	21	4	0	3.1%	-100.0%	-100.0%
Elementary Education	17	8	12	14	15	1.5%	7.1%	-11.8%
Family Consumer Science	5	1	3	1	0	1.2%	-100.0%	-100.0%
Middle Level Education	*	*	*	*	17	4.5%	100.0%	100.0%
Physical Education	3	6	5	8	10	4.2%	25.0%	233.3%
Reading	18	24	23	43	68	8.8%	58.1%	277.8%
Secondary Education (MAT)	44	48	58	58	51	6.2%	-12.1%	15.9%
Secondary Education (MEd)	10	9	9	9	10	0.9%	11.1%	0.0%
Special Education	12	17	13	11	9	1.2%	-18.2%	-25.0%
VISUAL & PERFORMING ARTS	31	23	15	15	21	2.1%	40.0%	-32.3%
Art Education	10	10	4	0	2	0.5%	100.0%	-80.0%
Conducting	*	*	*	*	3	0.1%	100.0%	100.0%
Fine Arts	8	5	5	4	4	0.5%	0.0%	-50.0%
Music Education	5	2	3	3	6	0.4%	100.0%	20.0%
Music Performance	8	6	3	8	6	0.6%	-25.0%	-25.0%
UNDESIGNATED/UNASSIGNED	442	349	369	361	290	36.5%	-19.7%	-34.4%
ACRT	11	4	3	3	4	0.5%	33.3%	-63.6%
GNDG	394	309	345	244	275	31.6%	12.7%	-30.2%
ICRT	5	1		3	4	0.3%	33.3%	-20.0%
RCRT	0	6	3	74	6	1.8%	-91.9%	100.0%
TRNS	2	4	2	4	1	0.3%	-75.0%	-50.0%
Degree Programs (GS Class)	30	25	16	33	0	2.1%	-100.0%	-100.0%
TOTAL	1,121	1,002	957	947	937	100.0%	-1.1%	-16.4%

* New program

** MEd EDAS changed to MEd EDLD in Fall 1999

*** Program discontinued

Ratio of FTE Students to FTE Teaching Faculty FALL 1996 - FALL 2000

(Performance Funding Indicator 3A)

	FALL 1996	FALL 1997	FALL 1998	FALL 1999	FALL 2000
Credit Hour Production	62,842	64,715	65,026	68,792	71,462
Undergraduate	56,619	58,588	59,249	63,156	64,389
Graduate	6,223	6,127	5,777	5,636	7,073
FTE Students*	4,293	4,416	4,431	4,680	4,882
Undergraduate	3,775	3,906	3,950	4,210	4,293
Graduate	519	511	481	470	589
FTE Teaching Faculty**	298	281	303	328	324
FTE Students/FTE Faculty	14.4	15.7	14.6	14.3	15.1

* FTE Students = CHP divided by 15 for undergraduates & 12 for graduates.

** FTE Teaching Faculty=Headcount FT Instructional Faculty(who teach at least 3 hrs Fall) and FTE of Part-time faculty.

CREDIT HOUR PRODUCTION BY DEPARTMENT

FALL 1996 - FALL 2000

DEPARTMENT	FALL 1996		FALL 1997		FALL 1998		FALL 1999		FALL 2000		99 TO 00 % DIFF.		96 TO 00 % DIFF.	
	UG	G	UG	G	UG	G	UG	G	UG	G	UG	G	UG	G
Arts and Sciences	33,567	1,504	33,038	1,421	33,602	1,325	36,139	1,314	37,440	1,202	3.6%	-8.5%	11.5%	-20.1%
Biology	3,864	125	3,642	123	3,999	139	4,248	112	4,461	95	5.0%	-15.2%	15.5%	-24.0%
BIOL	3,576	125	3,381	123	3,858	133	4,061	108	4,105	95	1.1%	-12.0%	14.8%	-24.0%
SCIE	288	0	261	0	141	6	187	4	356	0	90.4%	-100.0%	23.6%	0.0%
Chemistry	2,568	6	2,333	12	2,460	3	2,539	15	2,479	21	-2.4%	40.0%	-3.5%	250.0%
CHEM	991	6	1,068	12	1,102	3	1,385	15	1,029	21	-25.7%	40.0%	3.8%	250.0%
GEOL	814	0	738	0	714	0	678	0	759	0	11.9%	0.0%	-6.8%	0.0%
PHSC	483	0	196	0	373	0	193	0	355	0	83.9%	0.0%	-26.5%	0.0%
PHYS	280	0	331	0	271	0	283	0	336	0	18.7%	0.0%	20.0%	0.0%
English	5,978	249	6,058	207	6,155	183	6,306	210	6,392	144	1.4%	-31.4%	6.9%	-42.2%
ANTH	426	0	396	0	549	0	507	0	555	0	9.5%	0.0%	30.3%	0.0%
ENGL	2,081	222	1,971	171	1,950	153	1,809	156	1,893	114	4.6%	-26.9%	-9.0%	-48.6%
ENGE	N/A	N/A	N/A	N/A	N/A	N/A	44	9	40	12	-9.1%	33.3%	N/A	N/A
WRIT	3,471	27	3,691	36	3,624	30	3,946	45	3,904	18	-1.1%	-60.0%	12.5%	-33.3%
History	3,592	162	3,434	147	3,538	87	3,515	142	3,919	148	11.5%	4.2%	9.1%	-8.6%
HIST	3,568	144	3,428	126	3,522	72	3,496	108	3,883	120	11.1%	11.1%	8.8%	-16.7%
SCST	24	18	6	21	16	15	19	34	36	28	89.5%	-17.6%	50.0%	55.6%
Human Nutrition	1,114	243	1,356	192	1,289	204	1,272	162	1,141	132	-10.3%	-18.5%	2.4%	-45.7%
NUTR	718	243	540	192	497	204	468	162	487	132	4.1%	-18.5%	-32.2%	-45.7%
GEOG	396	0	816	0	792	0	804	0	654	0	-18.7%	0.0%	65.2%	0.0%
Mass Communication	1,011	0	997	0	1,065	0	1,259	0	1,169	0	-7.1%	0.0%	15.6%	0.0%
MCOM	1,011	0	966	0	1,027	0	1,201	0	1,130	0	-5.9%	0.0%	11.8%	0.0%
IMCO	0	0	31	0	38	0	58	0	39	0	-32.8%	0.0%	100.0%	0.0%
Mathematics	4,284	108	4,314	144	4,198	75	4,428	63	4,244	39	-4.2%	-38.1%	-0.9%	-63.9%
MAED	30	57	18	42	16	3	16	0	0	0	-100.0%	0.0%	-100.0%	-100.0%
MATH	4,254	51	4,296	102	4,182	72	4,412	63	4,244	39	-3.8%	-38.1%	-0.2%	-23.5%
Modern & Classical Lang.	2,047	84	2,180	54	2,285	51	2,543	67	3,347	42	31.6%	-37.3%	63.5%	-50.0%
CHIN	36	0	21	0	21	0	30	0	32	0	6.7%	0.0%	-11.1%	0.0%
FLAN	5	0	0	0	0	0	0	0	0	0	0.0%	0.0%	-100.0%	0.0%
FREN	522	0	533	6	475	0	601	12	671	0	11.6%	-100.0%	28.5%	0.0%
GERM	192	0	180	0	201	0	195	0	236	0	21.0%	0.0%	22.9%	0.0%
ITAL	0	0	0	0	0	0	126	0	144	0	14.3%	0.0%	100.0%	0.0%
JAPN	42	0	66	0	51	0	42	0	48	0	14.3%	0.0%	14.3%	0.0%
LATN	60	0	78	0	78	0	57	0	80	0	40.4%	0.0%	33.3%	0.0%
MLAN	12	6	9	0	32	0	20	4	12	0	-40.0%	-100.0%	0.0%	-100.0%
RUSS	0	0	42	0	30	0	0	0	0	0	0.0%	0.0%	0.0%	0.0%
SPAN	1,178	78	1,251	48	1,397	51	1,472	51	2,124	42	44.3%	-17.6%	80.3%	-46.2%
Philosophy & Religion	859	0	990	0	872	0	1,002	0	1,070	0	6.8%	0.0%	24.6%	0.0%
PHIL	433	0	570	0	459	0	493	0	505	0	2.4%	0.0%	16.6%	0.0%
RELG	426	0	420	0	413	0	509	0	565	0	11.0%	0.0%	32.6%	0.0%
Political Science	2,413	30	2,375	15	2,154	6	2,400	9	2,550	12	6.3%	33.3%	5.7%	-60.0%
PLSC	2,413	30	2,375	15	2,154	6	2,400	9	2,550	12	6.3%	33.3%	5.7%	-60.0%
Psychology	2,343	359	2,203	404	2,301	448	2,743	432	2,723	442	-0.7%	2.3%	16.2%	23.1%
PSYC	2,343	359	2,203	404	2,301	448	2,743	432	2,723	442	-0.7%	2.3%	16.2%	23.1%
Sociology	1,798	15	1,530	3	1,685	12	1,948	15	2,131	6	9.4%	-60.0%	18.5%	-60.0%
GRNT	57	0	0	0	3	0	3	0	3	0	0.0%	0.0%	-94.7%	0.0%
SOCL	1,741	15	1,500	3	1,548	12	1,894	15	2,050	6	8.2%	-60.0%	17.7%	-60.0%
WMST	0	0	30	0	54	0	51	0	78	0	52.9%	0.0%	100.0%	0.0%
Social Work	965	0	914	0	973	9	1,022	9	909	48	-11.1%	433.3%	-5.8%	100.0%
CMVS	N/A	N/A	N/A	N/A	N/A	N/A	3	0	0	0	-100.0%	0.0%	N/A	N/A
SCWK	965	0	914	0	973	9	1,019	9	909	48	-10.8%	433.3%	-5.8%	100.0%
Speech	714	0	686	0	684	0	837	0	831	16	-0.7%	100.0%	16.4%	100.0%
SPCH	714	0	686	0	684	0	837	0	795	0	-5.0%	0.0%	11.3%	0.0%
SPDC	N/A	N/A	N/A	N/A	N/A	N/A	N/A	N/A	36	16	N/A	N/A	N/A	N/A
Other	17	123	26	120	24	108	77	78	74	57	-3.9%	-26.9%	335.3%	-53.7%
HONR	11	0	16	0	24	0	38	0	53	0	39.5%	0.0%	381.8%	0.0%
INAS	6	0	10	0	0	0	39	0	21	0	-46.2%	0.0%	250.0%	0.0%
LART	0	123	0	120	0	108	0	78	0	57	0.0%	-26.9%	0.0%	-53.7%

CREDIT HOUR PRODUCTION BY DEPARTMENT

FALL 1996 - FALL 2000

DEPARTMENT	FALL 1996		FALL 1997		FALL 1998		Fall 1999		Fall 2000		99 TO 00 % DIFF.		96 TO 00 % DIFF.	
	UG	G	UG	G	UG	G	UG	G	UG	G	UG	G	UG	G
Business Admin.	8,754	1,749	9,848	1,513	9,750	1,360	10,787	1,317	10,798	2,009	0.1%	52.5%	23.3%	14.9%
Acct. Finance, & Econ.	3,288	348	3,789	306	3,654	306	4,121	291	4,011	537	-2.7%	84.5%	22.0%	54.3%
ACCT	1,197	264	1,287	171	1,329	189	1,550	246	1,449	435	-6.5%	76.8%	21.1%	64.8%
ECON	1,389	6	1,713	30	1,563	30	1,788	3	1,806	3	1.0%	0.0%	30.0%	-50.0%
FINC	702	78	789	105	762	87	783	42	756	99	-3.4%	135.7%	7.7%	26.9%
Com. Sci. & Quan. Meth.	2,310	96	2,371	75	2,359	117	2,399	57	2,441	105	1.8%	84.2%	5.7%	9.4%
CSCI	1,530	0	1,582	0	1,537	0	1,679	0	1,670	18	-0.5%	100.0%	9.2%	100.0%
OMTH	780	96	789	75	822	117	720	57	771	87	7.1%	52.6%	-1.2%	-9.4%
Management & Mktg.	3,156	1,305	3,657	1,132	3,699	937	4,209	969	4,307	1,367	2.3%	41.1%	36.5%	4.8%
BADM	405	927	516	790	642	601	663	756	755	1,055	13.9%	39.6%	86.4%	13.8%
HLAD/HLMS	363	0	318	0	279	0	321	0	285	0	-11.2%	0.0%	-21.5%	0.0%
MGMT	1,692	369	1,956	330	1,914	330	1,923	213	2,160	309	12.3%	45.1%	27.7%	-16.3%
MKTG	696	9	867	12	864	6	1,080	0	921	3	-14.7%	100.0%	32.3%	-66.7%
SPMA	N/A	N/A	N/A	N/A	N/A	N/A	222	0	186	0	-16.2%	0.0%	N/A	N/A
Integrated Mktg.Com.	0	0	31	0	38	0	58	0	39	0	-32.8%	0.0%	100.0%	0.0%
IMCO	0	0	31	0	38	0	58	0	39	0	-32.8%	0.0%	100.0%	0.0%
Education	6,632	2,670	7,109	3,024	6,993	2,904	6,948	2,849	7,198	3,714	3.6%	30.4%	8.5%	39.1%
Center for Pedagogy	2,499	444	3,279	417	2,960	1,179	3,206	1,250	3,159	603	-1.5%	-51.8%	26.4%	35.8%
EDUC	2,499	444	3,279	417	2,960	1,179	3,206	1,250	3,159	603	-1.5%	-51.8%	26.4%	35.8%
Curriculum & Inst.	2,462	600	2,215	645	2,282	441	1,861	330	1,957	345	5.2%	4.5%	-20.5%	-42.5%
ECED	591	0	515	0	486	0	278	3	453	0	62.9%	-100.0%	-23.4%	0.0%
EDCI	N/A	N/A	N/A	N/A	N/A	N/A	51	0	150	66	194.1%	100.0%	N/A	N/A
EDMD	96	135	117	177	90	90	81	30	99	21	22.2%	-30.0%	3.1%	-84.4%
ELEM	547	48	509	39	655	0	492	3	396	0	-19.5%	-100.0%	-27.6%	-100.0%
READ	511	81	549	120	446	117	464	84	405	150	-12.7%	78.6%	-20.7%	85.2%
SCED	0	123	0	177	0	132	0	111	0	9	0.0%	-91.9%	0.0%	-92.7%
SPED	480	129	387	96	445	66	361	84	293	87	-18.8%	3.6%	-39.0%	-32.6%
VCED	237	84	138	36	160	36	134	15	161	12	20.1%	-20.0%	-32.1%	-85.7%
Counsel. & Leadership	0	1,377	0	1,368	0	759	0	633	0	702	0.0%	10.9%	0.0%	-49.0%
ADSP	0	465	0	567	0	522	0	0	0	0	0.0%	0.0%	0.0%	-100.0%
CSDV	0	912	0	801	0	237	0	270	0	240	0.0%	-11.1%	0.0%	-73.7%
EDLD	N/A	N/A	N/A	N/A	N/A	N/A	0	363	0	462	0.0%	27.3%	N/A	N/A
Physical Education	1,671	63	1,600	78	1,751	75	1,881	636	2,082	2,064	10.7%	224.5%	24.6%	3176.2%
HLTH	396	9	342	36	366	27	390	21	420	12	7.7%	-42.9%	6.1%	33.3%
PHED	1,275	54	1,258	42	1,385	48	1,269	63	1,464	79	15.4%	25.4%	14.8%	46.3%
SPMA	N/A	N/A	N/A	N/A	N/A	N/A	222	0	186	0	-16.2%	0.0%	N/A	N/A
WPDC	N/A	N/A	N/A	N/A	N/A	N/A	0	552	12	1,973	100.0%	257.4%	N/A	N/A
Other	0	186	15	516	0	450	0	0	0	0	0.0%	0.0%	0.0%	-100.0%
WSDT	0	186	15	516	0	450	0	0	0	0	0.0%	0.0%	0.0%	-100.0%
Visual & Perf.Arts	6,858	294	7,715	166	8,117	188	8,599	156	8,762	226	1.9%	44.9%	27.8%	-23.1%
Art & Design	3,331	159	4,177	84	4,181	114	4,648	67	4,802	86	3.3%	28.4%	44.2%	-45.9%
ARTE	57	54	114	39	110	51	103	34	96	22	-6.8%	-35.3%	66.4%	-59.3%
ARTH	714	48	891	6	858	21	1,035	0	1,005	9	-2.9%	100.0%	40.8%	-81.3%
ARTS	1,830	57	2,247	30	2,320	39	2,464	33	2,603	55	5.6%	66.7%	42.2%	-3.5%
ARTT	372	0	499	0	478	0	458	0	483	0	5.5%	0.0%	29.8%	0.0%
INDS	358	0	426	9	415	3	588	0	615	0	4.6%	0.0%	71.8%	0.0%
Dance/Theatre	1,390	0	1,499	3	1,671	0	1,792	8	1,724	7	-3.8%	-12.5%	24.0%	100.0%
DANA	173	0	250	0	219	0	261	0	270	0	3.4%	0.0%	56.1%	0.0%
DANT	156	0	154	0	255	0	271	0	310	4	14.4%	100.0%	98.7%	100.0%
THRA	600	0	602	0	651	0	722	3	617	3	-14.5%	0.0%	2.8%	100.0%
THRT	461	0	493	3	546	0	538	5	527	0	-2.0%	-100.0%	14.3%	0.0%
Music	2,137	135	2,039	79	2,265	74	2,159	81	2,236	133	3.6%	64.2%	4.6%	-1.5%
MUSA	652	40	706	33	731	20	682	25	698	61	2.3%	144.0%	7.1%	52.5%
MUST	1,485	95	1,333	46	1,534	54	1,477	56	1,538	72	4.1%	28.6%	3.6%	-24.2%
Other	0	0	0	0	0	0	0	0	0	0	0.0%	0.0%	0.0%	0.0%
VPAS	0	0	0	0	0	0	0	0	0	0	0.0%	0.0%	0.0%	0.0%
Interdisciplinary	814	0	943	0	863	0	1,243	0	1,162	0	-6.5%	0.0%	42.8%	0.0%
CISM	814	0	912	0	825	0	963	0	937	0	-2.7%	0.0%	15.1%	0.0%
IMCO	0	0	31	0	38	0	58	0	39	0	-32.8%	0.0%	100.0%	0.0%
SPMA	N/A	N/A	N/A	N/A	N/A	N/A	222	0	186	0	-16.2%	0.0%	N/A	N/A
Grand Total	56,625	6,217	58,591	6,124	59,249	5,777	63,156	5,636	64,910	7,151	2.8%	26.9%	14.6%	15.0%

**CREDIT HOUR PRODUCTION BY DEPARTMENT
SPRING 1997 - SPRING 2001**

UNIT/DEPARTMENT	SPRING 1997		SPRING 1998		SPRING 1999		SPRING 2000		SPRING 2001		00 TO 01 % DIFF.		97 TO 01 % DIFF.	
	UG	G	UG	G	UG	G	UG	G	UG	G	UG	G	UG	G
Arts and Sciences	29,887	1,383	30,265	1,362	30,572	1,087	32,505	1,139	34,631	1,003	6.5%	-11.9%	15.9%	-27.5%
Biology	3,520	100	3,188	91	3,438	79	3,894	88	4,159	71	6.8%	-19.3%	18.2%	-29.0%
BIOL	3,250	100	3,038	91	3,261	79	3,792	88	3,931	71	3.7%	-19.3%	21.0%	-29.0%
SCIE	270		150		177		102		228		123.5%	0.0%	-15.6%	0.0%
Chemistry	2,550	15	2,478	12	2,141	15	2,202	3	2,028	3	-7.9%	0.0%	-20.5%	-80.0%
CHEM	882	15	844	12	824	15	1,117	3	708	3	-36.6%	0.0%	-19.7%	-80.0%
GEOL	1,028		728		647		618		821		32.8%	0.0%	-20.1%	0.0%
PHSC	292		521		284		96		220		129.2%	0.0%	-24.7%	0.0%
PHYS	348		385		386		371		279		-24.8%	0.0%	-19.8%	0.0%
English	5,329	279	5,647	261	5,331	168	5,677	225	5,223	174	-8.0%	-22.7%	-2.0%	-37.6%
ANTH	399		540		624		577		331		-42.6%	0.0%	-17.0%	0.0%
ENGL	2,049	213	2,041	195	1,816	108	1,968	195	1,725	120	-12.3%	-38.5%	-15.8%	-43.7%
WRIT	2,881	66	3,066	66	2,891	60	3,132	30	3,167	54	1.1%	80.0%	9.9%	-18.2%
History	2,949	120	2,913	114	3,264	81	3,441	142	3,576	108	3.9%	-23.9%	21.3%	-10.0%
HIST	2,949	120	2,913	111	3,264	81	3,441	142	3,576	108	3.9%	-23.9%	21.3%	-10.0%
SCST				3							0.0%	0.0%	0.0%	0.0%
Human Nutrition	1,050	261	1,207	254	1,101	225	1,209	194	1,307	162	8.1%	-16.5%	24.5%	-37.9%
NUTR	474	261	373	254	360	216	438	194	486	162	11.0%	-16.5%	2.5%	-37.9%
GEOG	576		834		741	9	771		821		6.5%	0.0%	42.5%	0.0%
Mass Communication	850	9	846	6	956	0	1,050	0	1,345	0	28.1%	0.0%	58.2%	0.0%
MCOM	850	9	834	6	925		981		1,255		27.9%	0.0%	47.6%	-100.0%
IMCO			12		31		69		90		30.4%	0.0%	100.0%	0.0%
Mathematics	3,035	84	3,008	66	3,103	57	3,057	27	3,414	27	11.7%	0.0%	12.5%	-67.9%
MAED/MPDC	12	9	15	3	9	3	72		87	6	20.8%	100.0%	625.0%	-33.3%
MATH	3,023	75	2,993	63	3,094	54	2,985	27	3,327	21	11.5%	-22.2%	10.1%	-72.0%
Modern & Classical Lang.	1,893	75	2,094	51	2,163	54	2,256	51	3,112	48	37.9%	-5.9%	64.4%	-36.0%
CHIN	21		18		12		12		20		66.7%	0.0%	-4.8%	0.0%
FLAN	3										0.0%	0.0%	-100.0%	0.0%
FREN	580	18	564	6	561	6	633	6	703	3	11.1%	-50.0%	21.2%	-83.3%
GERM	174		165		168		147		196		33.3%	0.0%	12.6%	0.0%
ITAL							66		88		33.3%	0.0%	100.0%	0.0%
JAPN	42		48		36		39		44		12.8%	0.0%	4.8%	0.0%
LATN	24		36		36		27		48		77.8%	0.0%	100.0%	0.0%
MLAN							18				-100.0%	0.0%	0.0%	0.0%
RUSS			21		18						0.0%	0.0%	0.0%	0.0%
SPAN	1,049	57	1,242	45	1,332	48	1,314	45	2,013	45	53.2%	0.0%	91.9%	-21.1%
Philosophy & Religion	1,066	0	1,005	0	1,101	0	1,144	0	1,129	0	-1.3%	0.0%	5.9%	0.0%
PHIL	591		543		608		603		637		5.6%	0.0%	7.8%	0.0%
RELG	475		462		493		541		492		-9.1%	0.0%	3.6%	0.0%
Political Science	2,044	15	2,029	9	2,006	15	1,989	6	2,247	0	13.0%	-100.0%	9.9%	-100.0%
PLSC	2,044	15	2,029	9	2,006	15	1,989	6	2,247	0	13.0%	-100.0%	9.9%	-100.0%
Psychology	2,235	308	2,163	375	2,342	297	2,364	328	2,482	340	5.0%	3.7%	11.1%	10.4%
PSYC	2,235	308	2,163	375	2,342	297	2,364	328	2,482	340	5.0%	3.7%	11.1%	10.4%
Sociology	1,584	24	1,758	24	1,721	3	2,030	12	2,068	10	1.9%	-16.7%	30.6%	-58.3%
GRNT			66		75		48				-100.0%	0.0%	0.0%	0.0%
SOCL	1,539	24	1,692	24	1,646	3	1,982	12	2,068	10	4.3%	-16.7%	34.4%	-58.3%
WMST	45										0.0%	0.0%	-100.0%	0.0%
Social Work	956	6	1,109	21	1,047	12	1,083	6	1,148	9	6.0%	50.0%	20.1%	50.0%
CMVS							21		63		200.0%	0.0%	100.0%	0.0%
SCWK	956	6	1,109	21	1,047	12	1,062	6	1,085	9	2.2%	50.0%	13.5%	50.0%
Speech	702	0	705	0	741	0	942	0	843	0	-10.5%	0.0%	20.1%	-100.0%
SPCH	702		705		741		942		843		-10.5%	0.0%	20.1%	0.0%
Other	124	87	115	78	117	81	167	57	550	51	229.3%	-10.5%	343.5%	-41.4%
AAMS	66		63		93		93		90		-3.2%	0.0%	36.4%	0.0%
GNED									411		100.0%	0.0%	100.0%	0.0%
HONR	19		33		18		59		46		-22.0%	0.0%	142.1%	0.0%
INAS	39		19		6		15		3		-80.0%	0.0%	-82.3%	0.0%
LART		87		78		81		57		51	0.0%	-10.5%	0.0%	-41.4%

**CREDIT HOUR PRODUCTION BY DEPARTMENT
SPRING 1997 - SPRING 2001**

UNIT/DEPARTMENT	SPRING 1997		SPRING 1998		SPRING 1999		SPRING 2000		SPRING 2001		00 TO 01 % DIFF.		97 TO 01 % DIFF.	
	UG	G	UG	G	UG	G	UG	G	UG	G	UG	G	UG	G
Business Administration	8,830	1,626	9,077	1,302	9,852	1,171	10,087	1,284	10,839	1,782	7.5%	38.8%	22.8%	9.6%
Account, Finance, & Economics	3,303	267	3,474	219	3,747	216	3,843	306	4,246	258	10.5%	-15.7%	28.5%	-3.4%
ACCT	1,248	168	1,302	117	1,356	117	1,404	165	1,378	93	-1.9%	-43.6%	10.4%	-44.6%
ECON	1,428	24	1,491	72	1,707	9	1,674	6	1,923	9	14.9%	50.0%	34.7%	-62.5%
FINC	627	75	681	102	684	90	765	135	945	156	23.5%	15.6%	50.7%	108.0%
Computer Sci. & Quantitative Meth.	2,114	66	2,193	84	2,187	45	2,264	87	2,353	126	3.9%	44.8%	11.3%	90.9%
CSCI	1,424		1,473		1,446		1,457	6	1,555	27	6.7%	350.0%	9.2%	100.0%
QMTM	690	66	720	84	741	45	807	81	798	99	-1.1%	22.2%	15.7%	50.0%
Management & Marketing	3,413	1,293	3,398	999	3,887	910	3,911	891	4,150	1,398	6.1%	56.9%	21.6%	8.1%
BADM	365	858	374	654	560	643	608	612	715	1,074	17.6%	75.5%	95.9%	25.2%
HLAD/HLMS	294	39	252		255		192		225		17.2%	0.0%	-23.5%	-100.0%
MGMT	1,953	378	1,893	327	1,998	255	1,929	270	2,118	324	9.8%	20.0%	8.4%	-14.3%
MKTG	801	18	879	18	1,074	12	1,161	9	1,065		-8.3%	-100.0%	33.0%	-100.0%
SPMA							21		27		28.6%	0.0%	100.0%	0.0%
Integrated Marketing Comm			12		31		69		90		30.4%	0.0%	100.0%	0.0%
IMCO			12		31		69		90		30.4%	0.0%	100.0%	0.0%
Education	6,636	2,529	7,265	2,352	7,054	2,397	6,881	2,067	6,999	2,206	1.7%	6.7%	5.5%	-12.8%
Center for Pedagogy	3,176	465	3,743	420	3,703	490	3,652	422	3,427	549	-6.2%	30.1%	7.9%	18.1%
EDUC	3,176	465	3,743	420	3,703	490	3,652	422	3,427	549	-6.2%	30.1%	7.9%	18.1%
Curriculum & Instruction	1,654	600	1,576	651	1,546	642	1,411	825	1,559	867	10.5%	5.1%	-5.7%	44.5%
EDCI		0				3	72		168	66	133.3%	100.0%	0.0%	100.0%
ECED	246	6	256	3	277		141		78		-44.7%	0.0%	-68.3%	-100.0%
EDLD								480		501	0.0%	4.4%	0.0%	100.0%
EDMD	108	159	126	210	123	159	96	96			-100.0%	-100.0%	-100.0%	-100.0%
ELEM	259	6	235	39	311	30	277	54	286	6	3.2%	-88.9%	10.4%	0.0%
READ	490	24	468	42	427	42	381	39	495	183	29.9%	369.2%	1.0%	662.5%
SCED		231		279		264		12			0.0%	-100.0%	0.0%	-100.0%
SPED	378	60	303	69	198	138	189	102	279	102	47.6%	0.0%	-26.2%	70.0%
VCED	173	114	188	48	210	6	255	42	253	9	-0.8%	-78.6%	46.2%	-92.1%
Counseling & Leadership	0	921	0	927	0	741	0	261	0	390	0.0%	49.4%	0.0%	-57.7%
ADSP		525		675		459					0.0%	0.0%	0.0%	-100.0%
CSDV		396		252		282		261		390	0.0%	49.4%	0.0%	-1.5%
Physical Education	1,806	75	1,946	75	1,802	68	1,818	104	2,013	91	10.7%	-12.5%	11.5%	21.3%
HLTH/WELL	381	36	435	36	489	21	435	24	501	9	15.2%	-62.5%	31.5%	-75.0%
PHED	1,425	39	1,511	39	1,313	47	1,362	80	1,485	82	9.0%	2.5%	4.2%	110.3%
SPMA							21		27		28.6%	0.0%	100.0%	0.0%
Other		468		279	3	456	0	455	0	309	0.0%	-32.1%	0.0%	-34.0%
WSDT/WPDC		468		279	3	456		455		309	0.0%	-32.1%	0.0%	-34.0%
Visual & Performing Arts	6,553	228	7,160	151	7,574	162	7,740	187	8,024	181	3.7%	-3.2%	22.4%	-20.6%
Art & Design	3,290	120	3,674	66	4,054	111	4,254	77	4,439	60	4.3%	-22.1%	34.9%	-50.0%
ARTE	171	33	159	18	180	42	183	12	180	12	-1.6%	0.0%	5.3%	-63.6%
ARTH	750	3	960	15	900	24	1,116	3	1,140	15	2.2%	400.0%	52.0%	400.0%
ARTS	1,668	78	1,890	30	2,147	42	2,099	59	2,268	33	8.1%	-44.1%	36.0%	-57.7%
ARTT	359		311		356		400		425		6.3%	0.0%	18.4%	0.0%
INDS	342	6	354	3	471	3	456	3	426		-6.6%	-100.0%	24.6%	-100.0%
Dance/Theatre	1,508	0	1,734	0	1,624	0	1,594	3	1,637	0	2.7%	-100.0%	8.6%	0.0%
DANA	207		197		227		236		279		18.2%	0.0%	34.8%	0.0%
DANT	289		230		291		290		257		-11.4%	0.0%	-11.1%	0.0%
THRA	578		690		647		643		588		-8.6%	0.0%	1.7%	0.0%
THRT	434		617		459		425	3	513		20.7%	-100.0%	18.2%	0.0%
Music	1,755	99	1,752	67	1,896	48	1,892	107	1,948	118	3.0%	10.3%	11.0%	19.2%
MUSA	637	33	665	28	628	12	607	32	642	59	5.8%	84.4%	0.8%	78.8%
MUST	1,118	66	1,087	39	1,268	36	1,285	75	1,306	59	1.6%	-21.3%	16.8%	-10.6%
Other	0	9	0	18	0	3	0	0	0	3	0.0%	100.0%	0.0%	0.0%
VPAS		9		18		3				3	0.0%	100.0%	0.0%	-66.7%
Interdisciplinary	9		12		31		90		117		30.0%	0.0%	1200.0%	0.0%
CISM	9										0.0%	0.0%	-100.0%	0.0%
IMCO			12		31		69		90		30.4%	0.0%	100.0%	0.0%
SPMA							21		27		28.6%	0.0%	100.0%	0.0%
GRAND TOTAL	51,915	5,766	53,755	5,167	55,021	4,817	57,123	4,677	60,376	5,172	5.7%	10.6%	16.3%	-10.3%

CREDIT HOUR PRODUCTION BY DEPARTMENT SUMMER 1996 - SUMMER 2000

DEPARTMENT	SUM 1996		SUM 1997		SUM 1998		SUM 1999		SUM 2000		99 TO 00 % DIFF.		96 TO 00 % DIFF.	
	UG	G	UG	G	UG	G	UG	G	UG	G	UG	G	UG	G
Arts and Sciences														
Biology	479	67	378	54	451	7	548	3	505	4	-7.8%	33.3%	5.4%	-94.0%
BIOL	317	67	291	54	322	7	368	3	349	4	-5.2%	33.3%	10.1%	-94.0%
SCIE	162	0	87	0	129		180		156		-13.3%	0.0%	-3.7%	0.0%
Chemistry	746	66	573	6	590	33	481	0	585	0	21.6%	0.0%	-21.6%	-100.0%
CHEM	400	24	285	6	288	33	229		336		46.7%	0.0%	-16.0%	-100.0%
GEOL	80	0	1	0	87		105		114		8.6%	0.0%	42.5%	0.0%
PHSC	211	0	225	0	161		66		69		4.5%	0.0%	-67.3%	0.0%
PHYS	55	42	62		54		81		66		-18.5%	0.0%	20.0%	-100.0%
English	623	402	639	210	558	177	786	132	870	162	10.7%	22.7%	39.6%	-59.7%
ANTH	93	0	60		63		102		147		44.1%	0.0%	58.1%	0.0%
ENGL	292	318	303	114	267	96	420	78	357	84	-15.0%	7.7%	22.3%	-73.6%
WRIT	238	84	276	96	228	81	264	54	366	78	38.6%	44.4%	53.8%	-7.1%
History	232	45	309	57	264	33	319	72	294	99	-7.8%	37.5%	26.7%	120.0%
HIST	232	45	309	57	264	33	319	72	294	99	-7.8%	37.5%	26.7%	120.0%
Human Nutrition	87	100	75	157	238	127	237	150	251	124	5.9%	-17.3%	188.5%	24.0%
NUTR	12	100	75	157	142	127	78	150	116	124	48.7%	-17.3%	866.7%	24.0%
GEOG	75	0			96		159		135		-15.1%	0.0%	80.0%	0.0%
Mass Communication	22		17	18	29	6	42	9	69	0	64.3%	-100.0%	213.6%	0.0%
MCOM	22	0	17	18	29	6	42	9	69		64.3%	-100.0%	213.6%	0.0%
Mathematics	600	90	522	27	540	15	660	15	486	45	-26.4%	200.0%	-19.0%	-50.0%
MAED	0	81									0.0%	0.0%	0.0%	-100.0%
MATH	600	9	522	27	540	15	660	15	486	45	-26.4%	200.0%	-19.0%	400.0%
Modern & Classical Lang.	183	30	312	81	201	45	186	24	298	48	60.2%	100.0%	62.8%	60.0%
CHIN	15	0									0.0%	0.0%	-100.0%	0.0%
CLAS	0	0	0	0							0.0%	0.0%	0.0%	0.0%
FREN	18	0	90	0	57		66	3	39		-40.9%	-100.0%	116.7%	0.0%
MLAN			60	18					93	6	100.0%	100.0%	100.0%	100.0%
SPAN	150	30	162	63	144	45	120	21	166	42	38.3%	100.0%	10.7%	40.0%
Philosophy & Religion	99		184		183		180		219		21.7%	0.0%	121.2%	0.0%
PHIL	33		88		78		114		105		-7.9%	0.0%	218.2%	0.0%
RELG	66		96		105		66		114		72.7%	0.0%	72.7%	0.0%
Political Science	205	9	153	27	228	6	184	3	213	0	15.8%	-100.0%	3.9%	-100.0%
PLSC	205	9	153	27	228	6	184	3	213		15.8%	-100.0%	3.9%	-100.0%
Psychology	303	474	303	399	201	351	252	306	268	123	6.3%	-59.8%	-11.6%	-74.1%
PSYC	303	474	303	399	201	351	252	306	268	123	6.3%	-59.8%	-11.6%	-74.1%
Sociology	151	9	216	0	131	0	267	3	220	3	-17.6%	0.0%	45.7%	-66.7%
GRNT							3				-100.0%	0.0%	0.0%	0.0%
SOCL	151	9	216		131		264	3	220	3	-16.7%	0.0%	45.7%	-66.7%
Social Work	219	6	299	6	248	0	262	0	281	0	7.3%	0.0%	28.3%	-100.0%
SCWK	219	6	299	6	248		262		281		7.3%	0.0%	28.3%	-100.0%
Speech	84	0	120	0	150	0	159	0	162	0	1.9%	0.0%	92.9%	0.0%
SPCH	84	0	120	0	150	0	159	0	162	0	1.9%	0.0%	92.9%	0.0%
Other	3	9	0	0	0	0	6	0	3	0	-50.0%	0.0%	0.0%	-100.0%
INAS	3	9	0	0	0	0	6	0	3	0	-50.0%	0.0%	0.0%	-100.0%

CREDIT HOUR PRODUCTION BY DEPARTMENT SUMMER 1996 - SUMMER 2000

DEPARTMENT	SUM 1996		SUM 1997		SUM 1998		SUM 1999		SUM 2000		99 TO 00 %DIFF.		96 TO 00 %DIFF.	
	UG	G	UG	G	UG	G	UG	G	UG	G	UG	G	UG	G
Business Administration														
Account, Finance, & Economics	411	360	414	267	411	201	624	261	621	393	-0.5%	50.6%	51.1%	9.2%
ACCT	177	60	135	72	162	96	213	99	237	231	11.3%	133.3%	33.9%	285.0%
ECON	159	165	186	102	150	60	270	105	201	108	-25.6%	2.9%	26.4%	-34.5%
FINC	75	135	93	93	99	45	141	57	183	54	29.8%	-5.3%	144.0%	-60.0%
Computer Sci. & Quantitative Meth.	240	36	174	33	218	81	249	45	248	108	-0.4%	140.0%	3.3%	200.0%
CSCI	63	0	60	0	80	45	99		83	30	-16.2%	100.0%	31.7%	100.0%
QMTM	177	36	114	33	138	36	150	45	165	78	10.0%	73.3%	-6.8%	116.7%
Management & Marketing	552	480	564	549	597	435	697	333	753	258	8.0%	-22.5%	36.4%	-46.3%
BADM	3	168	6	129	9	183	58	27	48	6	-17.2%	-77.8%	1500.0%	-96.4%
HLAD/HLSM	63	0	75	0	72		42		69		64.3%	0.0%	9.5%	0.0%
MGMT	339	312	360	420	408	252	507	306	426	252	-16.0%	-17.6%	25.7%	-19.2%
MKTG	147	0	123	0	108		90		180		100.0%	0.0%	22.4%	0.0%
SPMA	N/A	N/A	N/A	N/A	N/A	N/A	N/A	N/A	30		100.0%	0.0%	100.0%	0.0%
Education														
Center for Pedagogy	1,080	495	930	498	386	444	310	468	270	369	-12.9%	-21.2%	-75.0%	-25.5%
EDUC	1,080	495	930	498	386	444	310	468	270	369	-12.9%	-21.2%	-75.0%	-25.5%
Curriculum & Instruction	345	729	249	630	297	936	300	861	240	741	-20.0%	-13.9%	-30.4%	1.6%
CNPG	0	0	0	0							0.0%	0.0%	0.0%	0.0%
ECED							33		27		-18.2%	0.0%	100.0%	0.0%
EDCI								312		216	0.0%	-30.8%	0.0%	100.0%
EDMD	39	111	51	168	63	105	54	24	33	6	-38.9%	-75.0%	-15.4%	-94.6%
ELEM	111	120	75	84	84	129	57	51	57	36	0.0%	-29.4%	-48.6%	-70.0%
READ	105	207	75	174	108	255	132	225	84	285	-36.4%	26.7%	-20.0%	37.7%
SCED	0	84	0	102		123		24		45	0.0%	87.5%	0.0%	-46.4%
SPED	54	75	30	66		249	3	189		135	-100.0%	-28.6%	-100.0%	80.0%
VCED	36	132	18	36	42	75	21	36	39	18	85.7%	-50.0%	8.3%	-86.4%
Counseling & Leadership		771		681	0	756	0	597	0	625	0.0%	4.7%	0.0%	-18.9%
ADSP		294		345		453		333		307	0.0%	-100.0%	0.0%	-100.0%
CSDV		477		336		303		264		307	0.0%	16.3%	0.0%	-35.6%
EDLD	N/A	N/A	N/A	N/A	N/A	N/A	N/A	N/A	N/A	318	0.0%	100.0%	0.0%	100.0%
Physical Education	124	48	119	33	181	21	180	1,259	329	904	82.8%	-28.2%	165.3%	1783.3%
HLTH	24	3					48		48		0.0%	0.0%	100.0%	-100.0%
PHED	100	45	119	33	181	21	129	9	242	6	87.6%	-33.3%	142.0%	-86.7%
SPMA	N/A	N/A	N/A	N/A	N/A	N/A	N/A	N/A	30		100.0%	0.0%	100.0%	0.0%
WPDC						0	3	1,250	9	898	200.0%	-28.2%	100.0%	100.0%
Other	19	1,076	8	950	6	1,872		0	0	0	0.0%	0.0%	-100.0%	-100.0%
WSDT	19	1,076	8	950	6	1,872					0.0%	0.0%	-100.0%	-100.0%
Visual & Performing Arts														
Art & Design	144	168	150	117	189	87	152	90	147	48	-3.3%	-46.7%	2.1%	-71.4%
ARTE	0	60	0	57		45		15		30	0.0%	100.0%	0.0%	-50.0%
ARTH	6	45	3	54	6	33	39	36	15	18	-61.5%	-50.0%	150.0%	-60.0%
ARTS	117	63	129	6	150	6	113	33	132		16.8%	-100.0%	12.8%	-100.0%
ARTT			3		18						0.0%	0.0%	0.0%	0.0%
INDS	21	0	15	0	15	3		6			0.0%	-100.0%	-100.0%	0.0%
Dance/Theatre	0	0	4	72	46	0	61	0	24	3	-60.7%	100.0%	100.0%	100.0%
DANA	0	0	0	0	4	0					0.0%	0.0%	0.0%	0.0%
DANT					40		13		6	3	-53.8%	100.0%	100.0%	100.0%
THRA	0	0	1	0			48				-100.0%	0.0%	0.0%	0.0%
THRT	0	0	3	72	2				18		100.0%	0.0%	100.0%	0.0%
Music	9	153	23	58	21	39	109	91	59	100	-45.9%	9.9%	555.6%	-34.6%
MUSA	6	3	5	1	9		7	1	2	1	-71.4%	0.0%	-66.7%	-66.7%
MUST	3	150	18	57	12	39	102	90	57	99	-44.1%	10.0%	1800.0%	-34.0%
Other		18				0		0	0	87	0.0%	100.0%	0.0%	383.3%
VPAS	0	18							87		0.0%	100.0%	0.0%	383.3%
Critical Issues Symposium	0		0		0		0		0		0.0%	0.0%	0.0%	0.0%
CISM	0	0	0	0							0.0%	0.0%	0.0%	0.0%
GRAND TOTAL	6,960.0	5,641.0	6,735.0	4,930.0	6,364.0	5,672.0	7,251.0	4,722.0	7,385.0	4,244.0	1.8%	-10.1%	6.1%	-24.8%

Average Number of Student Credit Hours Taught by Full-Time Teaching Faculty*

(Performance Funding Indicator 3B)

COLLEGE/DEPARTMENT	FALL 1996		FALL 1997		FALL 1998		FALL 1999		FALL 2000		5-YEAR AVERAGE	
	headcount	avg. hrs.	headcount	avg. hrs.	headcount	avg. hrs.	headcount	avg. hrs.	headcount	avg. hrs.	headcount	avg. hrs.
ARTS & SCIENCES	119	241.39	120	232.53	118	229.89	123	230.75	118	233.33	119.6	233.6
Biology	12	227.42	13	232.53	13	200.08	12	191.75	12	209.83	12.4	212.3
Chemistry and Physics	10	255.10	11	195.91	10	215.40	11	193.82	12	171.83	10.8	206.4
English	20	209.70	22	203.68	20	192.35	22	209.09	21	214.00	21.0	205.8
History	10	357.90	10	349.80	10	349.40	8	363.75	9	349.56	9.4	354.1
Human Nutrition	4	160.75	4	124.00	5	172.00	5	193.20	5	217.40	4.6	173.5
Mass Communication	6	157.00	6	161.50	6	167.50	5	205.60	5	180.00	5.6	174.3
Mathematics	15	285.00	14	283.79	13	281.69	13	282.92	14	288.71	13.8	284.4
Modern and Classical Lang.	8	174.13	8	206.50	7	208.57	10	159.20	7	176.86	8.0	185.1
Philosophy & Religious Studies	3	311.67	2	364.50	3	307.67	3	335.00	3	362.67	2.8	336.3
Political Science	6	297.67	7	314.71	6	290.33	6	280.17	5	232.00	6.0	283.0
Psychology	12	202.17	11	195.55	12	201.00	13	218.46	12	238.83	12.0	211.2
Social Work	5	210.80	4	191.00	4	245.50	5	184.00	4	132.00	4.4	192.7
Sociology	6	302.17	5	246.20	6	224.67	7	293.29	7	225.29	6.2	258.3
Speech	2	203.00	3	193.00	3	212.33	3	225.33	2	238.50	2.6	214.4
BUSINESS ADMINISTRATION	38	250.47	39	255.21	37	246.11	39	269.82	37	254.78	38.0	255.3
Accounting, Finance & Econ.	15	244.27	14	252.86	15	237.40	15	253.47	13	243.92	14.4	246.4
Computer Science & Quan. Meth.	9	274.11	9	275.00	9	284.44	9	306.89	10	275.50	9.2	283.2
Management & Marketing	14	241.93	16	246.13	13	229.62	15	263.93	14	250.07	14.4	246.3
EDUCATION	41	162.88	39	184.46	38	179.16	40	162.43	37	162.80	39.0	170.3
Center for Pedagogy	9	212.00	9	231.22	12	206.58	13	186.77	10	162.80	10.6	157.5
Counseling and Leadership	8	116.25	7	111.57	6	125.33	7	104.29	5	85.20	6.6	108.5
Curriculum and Instruction	16	156.69	15	198.87	13	179.15	13	157.15	14	191.50	14.2	176.7
Health and Physical Education	8	166.63	8	168.63	7	178.29	7	185.14	8	203.00	7.6	180.3
VISUAL & PERFORMING ARTS	38	122.61	40	137.18	40	146.23	41	148.83	39	135.33	39.6	138.0
Art and Design	18	128.50	18	150.89	18	155.50	18	157.78	18	146.46	18.0	147.8
Music	13	105.69	14	105.00	15	118.80	15	113.60	14	107.14	14.2	110.0
Theatre And Dance	7	138.86	8	162.63	7	181.14	8	194.75	7	164.14	7.4	168.3
TOTAL	236	212.68	238	210.09	233	212.34	243	209.84	231	210.85	236.2	211.2

*NOTE: For this performance indicator full-time teaching faculty is defined as full-time, unclassified faculty at the rank of instructor, assistant professor, associate professor, professor at institutions, who teach at least three credit hours, measured in the fall semester. Unclassified employees who hold positions above department chair, such as deans, vice presidents, and presidents are excluded.

**AVERAGE CLASS SIZE OF LECTURE/LAB
BY DISCIPLINE AND LEVEL**

Program Code	Discipline	1996		1997		1998		1999		2000	
		Lower Div.	Upper Div.	Lower Div.	Upper Div.	Lower Div.	Upper Div.	Lower Div.	Upper Div.	Lower Div.	Upper Div.
0900	Communications	23.20	15.63	23.67	12.41	21.57	15.13	24.50	15.38	24.71	14.87
1100	Computer and Information Sciences	21.60	12.83	23.24	9.50	23.53	13.00	24.19	15.20	23.69	15.83
1300	Education	24.90	18.79	24.45	18.22	22.37	18.94	20.24	15.59	23.70	17.40
1600	Foreign Languages and Literatures	19.72	7.46	19.91	12.29	19.03	12.50	18.81	6.80	18.42	7.14
1900	Home Economics	44.00	18.20	41.00	17.18	35.00	17.00	44.00	14.30	48.00	14.45
2300	English Language and Literatures	20.18	13.71	20.50	15.10	21.97	15.03	21.49	17.03	21.09	15.06
2600	Biological Sciences/Life Sciences	33.59	16.23	31.87	16.74	35.33	16.65	33.25	17.78	35.06	14.71
2700	Mathematics	33.31	9.43	36.92	12.33	34.00	11.50	38.58	8.30	37.60	7.83
3000	Multi/Interdisciplinary Studies	15.81	19.00	15.72	10.00	16.04	18.00	17.41	8.50	15.68	10.67
3100	Sport Management	*	*	*	*	*	*	74.00	*	55.00	7.00
3800	Philosophy and Religion	35.40	18.33	34.67	30.50	36.20	20.20	36.75	26.57	35.80	35.40
4000	Physical Sciences	25.39	11.67	21.05	15.50	21.81	14.69	24.56	14.61	20.08	12.88
4200	Psychology	31.62	18.81	32.92	16.73	26.20	19.37	34.93	21.94	36.71	22.71
4400	Public Administration and Services	25.50	23.88	25.50	17.27	25.50	17.33	19.00	16.20	41.00	12.44
4500	Social Sciences and History	39.70	19.21	40.06	18.89	38.74	19.42	41.52	19.49	40.97	18.69
5000	Visual and Performing Arts	23.89	8.98	23.59	14.68	25.22	16.90	26.92	13.64	27.31	12.10
5200	Business Management and Admin.	36.74	24.93	39.62	27.46	41.76	25.21	38.12	29.60	37.85	27.74
	University Total Average	26.10	16.97	26.17	18.38	26.19	18.61	27.20	17.96	26.85	17.51

* New program

**GRADUATE DEGREES CONFERRED
BY DEGREE PROGRAM & SEMESTER
1994 - 2000**

DEGREE PROGRAM	1994	1994	1995	1995	1995	1996	1996	1996	1997	1997	1997	1998	1998	1998	1999	1999	1999	2000	2000
	SUM	FALL	SPR	SUM	FALL	SPR	SUM	FALL	SPR	SUM	FALL	SPR	SUM	FALL	SPR	SUM	FALL	SPR	SUM
ARTS & SCIENCES	4	13	24	9	20	33	9	17	31	14	19	36	6	17	32	7	11	35	11
M.S. Biology		2	1		1	4	1	1	4	3	1	3		0	4	2			2
M.A. English	1	3	5	3	3	3	1	3	2	4	6	4	2	1	2	0			4
M.S. Human Nutrition	1	4	1		4	5	4	5	1	1	6	4	1	4	3	3	8	4	4
M.A. History			2	1	1	2		4	2	1	1	4	1	1	3	0	1		1
M.L.A. Liberal Arts	1	3	3		9	7		3	8		4	6		11	5	0	2		9
MMTH Mathematics	1		1	1		1				1		1		0	3	0			1
M.S. School Psychology			6			5	3		5	1		6		0	5	0			8
S.S.P. School Psychology			5	1		5			9			6		0	6	1			6
M.A. Spanish		1		3	2	1		1		3	1	2	2	0	1	1			2
BUSINESS ADMINISTRATION	14	30	44	11	22	39	15	27	39	18	27	40	26	22	31	17	30	34	12
M.B.A. Business Administration	14	28	30	10	22	20	15	27	22	18	25	21	25	22	17	16	30	22	12
Executive MBA		2	14	1		19			17		2	19	1	0	14	1			12
EDUCATION	33	33	56	30	36	48	41	26	49	33	16	49	44	26	56	53	33	32	24
M.S. Business Education	1		1		1		1	2	12			1		1	0	4	2		4
M.A.T. Business Education			1	2	1	5	1	1	1	1	1	1	3	3	1	0	4		
M. Ed. Counseling & Development	8	13	27	3	9	14	10	11	12	5	1	20	5	1	15	7	1		
Ed. S. Curriculum and Instruction		1	1			1						2		1	0	1			
M. Ed. Educ. Adm. and Supervision	3	3	3	2	9	9	9	3	6	6	4	3	8	4	10	21	10	1	4
Ed. S. Educational Administration	1	4	3	4	1	1	2	3	4	1		2	3	7	1	2	4	9	3
M. Ed. Educational Media	5		4	4	3		2	1	3	3	1	7	4	0	6	5	5	4	
M. Ed. Elementary Education	6	4	5	3	3	2	1	1	2	2	2		5	2	1	1	2		1
M.S. Family Consumer Science			1				1		1	1			1	2	1	2			
M.S. Physical Education	1		1	2				1				1	1	0	1	0			
M. Ed. Reading	3		1			1	8	1		7			9	2	0	8	1	2	6
M. Ed. Secondary Education	1			3		1	1		2		2		2	1	1	1	1		2
M.A.T. Secondary Education	3	6	8	7	4	14	4	1	5	4	5	12	2	2	17	0	3	12	3
M. Ed. Special Education	1	2			5		1	1	1	3			1	0	2	1			5
VISUAL & PERFORMING ARTS	1	6	11	1	1	5	2	2	6	2	3	7	2	2	5	4	1	3	0
M.F.A Art and Design		1	2		1	3			3			1		0	2	0	1		
M.A. Art Education							1			2	2		2	2	0	4			1
M.M.E. Music Education	1	2	3	1		1	1	1	1			1		0	2	0			1
M.M. Music Performance		3	6			1		1	2		1	5		0	1	0			1
TOTAL	52	82	135	51	79	125	67	72	125	67	65	132	78	67	124	81	75	104	47

**DEGREES CONFERRED
BY LEVEL & SEMESTER
1990 - 2001**

LEVEL/SEMESTER	90-91	91-92	92-93	93-94	94-95	95-96	96-97	97-98	98-99	99-00	00-01
Undergraduate	743	676	807	741	700	692	698	723	671	769	724
Summer	92	81	107	124	128	86	79	88	78	95	79
Fall	245	198	245	227	206	208	209	227	202	261	217
Spring	406	397	455	390	366	398	410	408	391	413	428
Graduate	266	275	278	277	269	255	264	264	269	260	219
Summer	66	70	82	79	52	51	64	67	78	81	50
Fall	88	76	77	73	82	79	72	65	67	75	77
Spring	112	129	119	125	135	125	128	132	124	104	92
Total UG & G	1,009	951	1,085	1,018	969	947	962	987	940	1,029	943
Summer	158	151	189	203	180	137	143	155	156	176	129
Fall	333	274	322	300	288	287	281	292	269	336	294
Spring	518	526	574	515	501	523	538	540	515	517	520

**UNDERGRADUATE DEGREES CONFERRED
BY DEGREE PROGRAM & SEMESTER
1995 - 2001**

DEGREE PROGRAM	1995 SUM	1995 FALL	1996 SPR	1996 SUM	1996 FALL	1997 SPR	1997 SUM	1997 FALL	1998 SPR	1998 SUM	1998 FALL	1999 SPR	1999 SUM	1999 FALL	2000 SPR	2000 SUM	2000 FALL	2001 SPR	2001 SUM		
ARTS & SCIENCES	50	84	161	43	98	174	52	103	162	42	94	166	48	97	170	49	92	207	44	348	47.35%
B.S. Biology	7	11	23	6	15	34	8	12	19	3	10	24	5	8	22	5	10	21	3	36	4.90%
B.S. Chemistry		2	5	1				1	2	1	2	5	1		7	1	1	7	4	9	1.22%
B.A. English	8	7	16	1	4	18	4	7	10	1	6	20	3	5	17	1	3	17	2	21	2.86%
B.S. Human Nutrition	2	1	2		4	8	5	8	5	3	9	3	2	5	2		4	2		6	0.82%
B.S. Integrated Marketing Comm.									2	1	0	6	0	4	10	3	9	15	7	27	3.67%
B.A. History	3	6	17	7	9	10	4	14	13	4	11	16	4	8	14	8	10	10	7	28	3.81%
B.A. Mass Communication	2	12	14		11	16	2	19	16	2	7	19	2	11	8	1	12	18	2	31	4.22%
B.A. Communication Disorders										4	1	3	0	4	9	2	5	29	2	36	4.90%
B.A. Mathematics	1	1	3	1	1	4	1	1	5	1	1	2	5		3	1	1			2	0.27%
B.S. Mathematics	1	2	1		1	6			1	1	0	0	1		3			2		2	0.27%
B.S. Medical Technology				1			2													0	0.00%
B.A. Modern Languages	1	2	6	2	3	10	1		2	1	4	7	0	4	6	4	1	5	1	10	1.36%
B.A. Philosophy & Religion	1	1	3	3	2	8	1	2	1		1	1	0	3	1		1	3		4	0.54%
B.A. Political Science	6	5	14	5	11	10	7	6	10	4	5	17	5	9	18	1	9	15	1	25	3.40%
B.A. Psychology	7	11	31	9	17	23	7	10	36	7	13	18	4	15	23	8	12	33	6	53	7.21%
B.S. Science Communication			1	1		1					0	1	0		1					0	0.00%
B.S.W. Social Work	9	15	14	7	14	14	7	12	21	9	17	15	13	14	19	12	8	18	7	38	5.17%
B.A. Sociology		4	7	2	5	4	1	7	11		6	9	2	7	7	2	6	10	2	18	2.45%
B.A. Speech	2	4	4		1	8	2	4	8		1	0	1					2		2	0.27%
																				0	0.00%
BUSINESS ADMINISTRATION	12	75	84	15	65	74	14	84	89	22	68	83	27	78	102	22	62	95	15	179	24.35%
B.S. Business Administration	12	71	78	14	61	71	14	78	86	22	64	81	26	76	96	20	59	94	15	173	23.54%
B.S. Computer Science		4	6	1	4	3		6	3		4	2	1	2	6	2	3	1		6	0.82%
																				0	0.00%
EDUCATION	14	23	98	16	24	123	11	18	122	7	18	102	6	47	90	6	35	77	11	118	16.05%
B.S. Business Education		1	3			2	1	1	3	2	0	4	0	1	2		1	3		4	0.54%
B.S. Early Childhood Education	2	4	20	2	6	30	3	1	43		2	25	2	12	21	2	1	21	2	24	3.27%
B.S. Elementary Education	1	9	34	3	12	52	3	7	43	3	5	38	2	16	36			13	27	40	5.44%
B.S. Home Economics	1	1	1	2	2	2				1										0	0.00%
B.S. Family Consumer Sciences	2		1			2			2		1	2	0	4	4	1	8	9	1	18	2.45%
B.S. Physical Education	2	6	2	5		14	4	4	12		6	16	1	5	11	1	7	11	5	19	2.59%
B.S. Special Education	6	2	37	4	4	21		5	19	1	4	17	1	9	16	2	5	5	1	12	1.63%
B.S. Sport Management																		1	2	1	0.14%
																				0	0.00%
VISUAL & PERFORMING ARTS	10	26	55	5	22	39	11	22	35	7	22	40	14	39	51	14	27	49	9	90	12.24%
B.A. Art	3	4	13	2	5	7	1	2	6		4	3	3	5	1	2	4	5	1	11	1.50%
B.A. Art History					1	2		1	2		1	0	1		3	1		2		3	0.41%
B.F.A. Art	1	16	19	2	8	15	1	15	14	4	9	18	6	18	19	2	14	9	2	25	3.40%
B.A. Dance		1	2			1		1			1	1	0	6	6	2		3	1	5	0.68%
B.A. Music			3	1	1	2	2	2	3	1	3	1	1	3	4	2	4	4	1	10	1.36%
B.M.E. Music Education (Choral)		1	2		3	1	2		1			2	2	2	1	2		4	1	6	0.82%
B.M.E. Music Education (Instrumental)	4		1			1	3		1	1		1	1	2	3		1	5		6	0.82%
B.M. Music Performance		1	3				2		2		1	3	0		4			2		2	0.27%
B.A. Theatre	2	3	12		4	10		1	6	1	3	11	0	3	10	3	4	15	3	22	2.99%
																				0	0.00%
TOTAL	86	208	398	79	209	410	88	227	408	78	202	391	95	261	413	91	216	428	79	735	100.00%

WINTHROP UNIVERSITY RETENTION & GRADUATION RATES

ALL FULL-TIME FIRST-TIME FRESHMEN

Fall	Headcount	Retention Rate after			Cumulative Graduation & Continuation Rate			
		One Year	Two Years	Three Years	Within Five Years		Within Six Years	
					Graduated	Continued	Graduated	Continued
1989	946	75.8%	62.9%	57.8%	47.5%	6.9%	51.5%	3.2%
1990	602	80.2%	69.6%	63.4%	52.7%	6.5%	57.1%	2.2%
1991	654	74.9%	65.0%	60.7%	47.9%	6.7%	51.2%	3.7%
1992	801	76.5%	63.0%	56.6%	49.3%	6.0%	53.2%	2.4%
1993	764	75.0%	65.4%	60.0%	50.8%	6.7%	55.0%	2.5%
1994	725	77.2%	65.7%	59.0%	50.2%	5.9%	53.8%	2.2%
1995	868	75.9%	64.4%	59.6%	51.4%	5.7%		
1996	812	75.9%	66.4%					
1997	909	75.2%	66.8%					
1998	826	77.1%	67.4%					
1999	965	77.8%						

ATHLETIC GRADUATION RATE & ENROLLMENT SUMMARY

FRESHMEN COHORT GRADUATION RATES

	Winthrop				All NCAA Public Division I**			
	94-95 Freshman Rate		4-Year Average*		94-95 Freshman Rate		4-Year Average*	
	#	%	#	%	#	%	#	%
FULL-TIME								
Black	165	52%	690	54%	51,484	35%	198,657	34%
White	533	53%	2,158	54%	306,214	55%	1,215,801	55%
Other	27	48%	40	42%	66,738	52%	248,098	52%
Total	725	53%	2,888	54%	424,436	52%	1,662,556	52%
STUDENT ATHLETES (who received athletics aid)								
Black	7	43%	22	32%	2,768	43%	11,028	41%
White	25	80%	93	71%	6,657	59%	26,186	58%
Other	5	80%	25	48%	1,077	63%	4,003	52%
Total	37	73%	140	61%	10,502	54%	41,217	53%

Note: 4-Year average is six year graduation time for 89-90, 90-91, 91-92, 92-93 first-time freshmen cohorts.

** N=210

UNDERGRADUATE ENROLLMENT

FULL-TIME STUDENTS ENROLLED FALL 1999

	Male		Female		Total	
	All FT UG	Athletes	All FT UG	Athletes	All FT UG	Athletes
Black	266	16	697	10	963	26
White	823	43	1,973	56	2,796	99
Other	74	28	87	14	161	42
Total	1,163	87	2,757	80	3,920	167

**WINTHROP GRADE POINT AVERAGES
BY LEVEL & SEMESTER
1991 - 2001**

	1991-92		1992-93		1993-94		1994-95		1995-96	
	FALL	SPRING	FALL	SPRING	FALL	SPRING	FALL	SPRING	FALL	SPRING
Undergraduate Avg GPA	2.66	2.70	2.73	2.71	2.80	2.72	2.85	2.78	2.83	2.80
Freshmen Avg GPA	2.48	2.46	2.61	2.43	2.65	2.35	2.68	2.46	2.67	2.37
Graduate Avg GPA	3.58	3.60	3.59	3.63	3.63	3.64	3.57	3.69	3.56	3.64

	1996-97		1997-98		1998-99		1999-00		2000-01	
	FALL	SPRING	FALL	SPRING	FALL	SPRING	FALL	SPRING	FALL	SPRING
Undergraduate Avg GPA	2.86	2.85	2.92	2.87	2.90	2.89	2.89	2.87	2.96	2.92
Freshmen Avg GPA	2.67	2.53	2.72	2.48	2.69	2.52	2.72	2.51	2.75	2.64
Graduate Avg GPA	3.60	3.63	3.63	3.66	3.62	3.67	3.65	3.65	3.63	3.63

Full-Time Employees By EEO Occupational Category

	Fall 00	Fall 99	Fall 98	Fall 97	Fall 96
Full-Time Faculty 9/10 month	254	244	242	243	245
Full-Time Faculty 11/12 month	17	19	18	23	20
Full-Time Faculty - Total	271	263	260	266	265
Executive/Administrative & Managerial	40	39	37	39	44
Other Professionals	133	125	124	115	109
Technical & Paraprofessionals	77	75	73	69	68
Clerical & Secretarial	94	92	92	104	106
Skilled Crafts	35	31	34	38	38
Service/Maintenance	75	78	78	77	81
Total	725	703	698	708	711

Note: Headcount as of October 1--Not positions.

**TOTAL FULL-TIME FACULTY HEADCOUNT
FALL 1991 - FALL 2000**

COLLEGE/DEPARTMENT	Fall 1991	Fall 1992	Fall 1993	Fall 1994	Fall 1995	Fall 1996	Fall 1997	Fall 1998	Fall 1999	Fall 2000
ARTS & SCIENCES	133	132	127	129	133	133	133	132	134	138
Biology	12	13	13	13	13	13	13	13	13	13
Chemistry and Physics	11	11	10	9	10	10	11	11	11	12
English	24	24	23	26	26	25	24	22	24	25
History	9	9	9	9	10	11	10	10	8	11
Human Nutrition	4	3	4	5	5	5	5	6	6	6
Mass Communication	7	7	6	6	6	6	6	6	6	6
Mathematics	16	16	15	15	15	15	15	14	13	14
Modern and Classical Languages	9	9	8	7	8	9	9	9	11	10
Philosophy and Religious Studies	4	4	3	3	3	3	3	3	3	3
Political Science	7	7	7	7	7	7	8	8	7	8
Psychology	15	15	15	15	15	15	15	15	16	14
Social Work	6	5	5	5	6	6	5	6	6	6
Sociology	5	6	6	6	6	6	6	6	7	7
Speech	4	3	3	3	3	2	3	3	3	3
BUSINESS ADMINISTRATION*	53	50	48	47	47	46	47	45	46	51
Accounting, Finance & Economics				17	16	16	15	15	15	17
Computer Science & Quant. Methods				11	10	9	10	10	10	11
Management and Marketing				19	21	21	22	20	21	23
EDUCATION*	61	55	49	54	54	56	53	48	50	53
Center for Pedagogy					12	12	11	14	16	16
Counseling and Leadership	13	9	9	9	9	9	8	7	8	7
Curriculum and Instruction	37	35	30	35	26	27	25	20	19	21
Health and Physical Education	11	11	10	10	7	8	9	7	7	9
VISUAL & PERFORMING ARTS	45	46	45	46	46	44	46	48	49	49
Art and Design	21	21	20	20	21	20	21	22	22	23
Music	17	19	19	19	18	17	17	17	18	17
Theatre and Dance	7	6	6	7	7	7	8	9	9	9
LIBRARY	14	14	12	14	13	14	14	13	14	14
ACADEMIC AFFAIRS					3	1	1	1	1	1
TOTAL	306	297	281	290	296	294	294	287	294	306

* In the College of Education and the College of Business Administration, faculty have moved between departments during the 9-year period shown.

**COMPARISON OF FALL 1999 AND FALL 2000
TOTAL FULL-TIME FACULTY
TENURED, DOCTORATE, AND TERMINAL DEGREE**

COLLEGE/DEPARTMENT	TENURED				TERMINAL DEGREE				DOCTORATE DEGREE			
	2000		1999		2000		1999		2000		1999	
	#	% OF FT	#	% OF FT	#	% OF FT	#	% OF FT	#	% OF FT	#	% OF FT
ARTS & SCIENCES	82	59.4%	79	59.0%	120	87.0%	112	83.6%	120	87.0%	112	83.6%
Biology	10	76.9%	9	69.2%	13	100.0%	13	100.0%	13	100.0%	13	100.0%
Chemistry & Physics	7	58.3%	7	63.6%	11	91.7%	11	100.0%	11	91.7%	11	100.0%
English	15	60.0%	16	66.7%	18	72.0%	17	70.8%	18	72.0%	17	70.8%
History	4	36.4%	3	37.5%	11	100.0%	8	100.0%	11	100.0%	8	100.0%
Human Nutrition	4	66.7%	4	66.7%	5	83.3%	5	83.3%	5	83.3%	5	83.3%
Mass Communication	4	66.7%	4	66.7%	3	50.0%	2	33.3%	3	50.0%	2	33.3%
Mathematics	8	57.1%	8	61.5%	12	85.7%	8	61.5%	12	85.7%	8	61.5%
Modern & Classical Lang.	5	50.0%	5	45.5%	8	80.0%	7	63.6%	8	80.0%	7	63.6%
Phil. and Religious Studies	2	66.7%	2	66.7%	3	100.0%	3	100.0%	3	100.0%	3	100.0%
Political Science	5	62.5%	3	42.9%	8	100.0%	7	100.0%	8	100.0%	7	100.0%
Psychology	7	50.0%	7	43.8%	14	100.0%	16	100.0%	14	100.0%	16	100.0%
Social Work	3	50.0%	3	50.0%	6	100.0%	6	100.0%	6	100.0%	6	100.0%
Sociology	6	85.7%	6	85.7%	6	85.7%	6	85.7%	6	85.7%	6	85.7%
Speech	2	66.7%	2	66.7%	2	66.7%	3	100.0%	2	66.7%	3	100.0%
BUSINESS ADMIN.	26	51.0%	28	60.9%	37	72.5%	35	76.1%	37	72.5%	35	76.1%
Acc., Finance & Econ.	12	70.6%	12	80.0%	13	76.5%	12	80.0%	13	76.5%	12	80.0%
Comp. Sci. & Quant. Meth.	6	54.5%	6	60.0%	8	72.7%	7	70.0%	8	72.7%	7	70.0%
Management & Marketing	8	34.8%	10	47.6%	16	69.6%	16	76.2%	16	69.6%	16	76.2%
EDUCATION	21	39.6%	25	50.0%	38	71.7%	39	78.0%	38	71.7%	39	78.0%
Center for Pedagogy	4	25.0%	6	37.5%	11	68.8%	12	75.0%	11	68.8%	12	75.0%
Counseling & Leadership	5	71.4%	5	62.5%	7	100.0%	8	100.0%	7	100.0%	8	100.0%
Curriculum & Instruction	10	47.6%	11	57.9%	14	66.7%	12	63.2%	14	66.7%	12	63.2%
Health & Physical Edu.	2	22.2%	3	42.9%	6	66.7%	7	100.0%	6	66.7%	7	100.0%
VISUAL & PERF. ARTS	29	59.2%	30	61.2%	37	75.5%	37	75.5%	21	42.9%	22	44.9%
Art & Design	13	56.5%	12	54.5%	18	78.3%	16	72.7%	6	26.1%	5	22.7%
Music	12	70.6%	13	72.2%	13	76.5%	14	77.8%	13	76.5%	14	77.8%
Theatre and Dance	4	44.4%	5	55.6%	6	66.7%	7	77.8%	2	22.2%	3	33.3%
LIBRARY	10	71.4%	9	64.3%	14	100.0%	14	100.0%	1	7.1%	1	7.1%
TOTAL	168	54.9%	171	58.2%	246	80.4%	237	80.6%	217	70.9%	209	71.1%

SOURCE: INSTITUTIONAL RESEARCH

**COMPARISON OF FALL 1999 AND FALL 2000
FULL-TIME INSTRUCTIONAL FACULTY
TENURED, DOCTORATE, AND TERMINAL DEGREE**

COLLEGE/DEPARTMENT	TENURED				TERMINAL DEGREE				DOCTORATE DEGREE			
	2000		1999		2000		1999		2000		1999	
	#	% OF FT	#	% OF FT	#	% OF FT	#	% OF FT	#	% OF FT	#	% OF FT
ARTS & SCIENCES	82	61.7%	74	58.7%	115	86.5%	104	82.5%	115	86.5%	104	82.5%
Biology	10	76.9%	8	66.7%	13	100.0%	12	100.0%	13	100.0%	12	100.0%
Chemistry & Physics	7	58.3%	7	63.6%	11	91.7%	11	100.0%	11	91.7%	11	100.0%
English	15	62.5%	16	69.6%	17	70.8%	16	69.6%	17	70.8%	16	69.6%
History	4	36.4%	3	37.5%	11	100.0%	8	100.0%	11	100.0%	8	100.0%
Human Nutrition	5	100.0%	3	60.0%	4	80.0%	4	80.0%	4	80.0%	4	80.0%
Mass Communication	6	100.0%	4	66.7%	3	50.0%	2	33.3%	3	50.0%	2	33.3%
Mathematics	8	57.1%	8	61.5%	12	85.7%	8	61.5%	12	85.7%	8	61.5%
Modern & Classical Lang.	5	50.0%	5	45.5%	8	80.0%	7	63.6%	8	80.0%	7	63.6%
Phil. and Religious Studies	2	66.7%	2	66.7%	3	100.0%	3	100.0%	3	100.0%	3	100.0%
Political Science	4	57.1%	2	33.3%	7	100.0%	6	100.0%	7	100.0%	6	100.0%
Psychology	6	46.2%	6	46.2%	13	100.0%	13	100.0%	13	100.0%	13	100.0%
Social Work	2	40.0%	2	40.0%	5	100.0%	5	100.0%	5	100.0%	5	100.0%
Sociology	6	85.7%	6	85.7%	6	85.7%	6	85.7%	6	85.7%	6	85.7%
Speech	2	66.7%	2	66.7%	2	66.7%	3	100.0%	2	66.7%	3	100.0%
BUSINESS ADMIN.	25	59.5%	27	69.2%	35	83.3%	33	84.6%	35	83.3%	33	84.6%
Acc., Finance & Econ.	12	75.0%	12	80.0%	13	81.3%	12	80.0%	13	81.3%	12	80.0%
Comp. Sci. & Quant. Meth.	6	60.0%	6	66.7%	8	80.0%	7	77.8%	8	80.0%	7	77.8%
Management & Marketing	7	43.8%	9	60.0%	14	87.5%	14	93.3%	14	87.5%	14	93.3%
EDUCATION	20	46.5%	24	60.0%	34	79.1%	37	92.5%	34	79.1%	37	92.5%
Center for Pedagogy	3	25.0%	5	38.5%	9	75.0%	11	84.6%	9	75.0%	11	84.6%
Counseling & Leadership	5	83.3%	5	71.4%	6	100.0%	7	100.0%	6	100.0%	7	100.0%
Curriculum & Instruction	10	58.8%	11	84.6%	13	76.5%	12	92.3%	13	76.5%	12	92.3%
Health & Physical Edu.	2	25.0%	3	42.9%	6	75.0%	7	100.0%	6	75.0%	7	100.0%
VISUAL & PERF. ARTS	26	59.1%	27	62.8%	33	75.0%	32	74.4%	19	43.2%	19	44.2%
Art & Design	12	57.1%	11	57.9%	16	76.2%	14	73.7%	5	23.8%	4	21.1%
Music	10	66.7%	11	68.8%	12	80.0%	12	75.0%	12	80.0%	12	75.0%
Theatre and Dance	4	50.0%	5	62.5%	5	62.5%	6	75.0%	2	25.0%	3	37.5%
TOTAL	153	79.3%	152	61.3%	217	82.8%	206	83.1%	203	77.5%	193	77.8%

SOURCE: INSTITUTIONAL RESEARCH

**FULL-TIME INSTRUCTIONAL* FACULTY
BY RANK AND DEPARTMENT
FALL 1998 - FALL 2000**

COLLEGE/DEPARTMENT	PROFESSOR			ASSOCIATE PROFESSOR			ASSISTANT PROFESSOR			INSTRUCTOR		
	2000	1999	1998	2000	1999	1998	2000	1999	1998	2000	1999	1998
ARTS & SCIENCES	36	35	34	40	35	38	39	38	39	18	17	12
Biology	3	2	3	7	6	5	3	4	5	0	0	0
Chemistry & Physics	3	3	3	4	4	4	3	3	3	2	1	1
English	8	9	8	7	7	7	3	2	3	6	5	2
History	2	2	2	2	1	2	7	5	6	0	0	0
Human Nutrition	1	1	1	1	1	1	2	2	1	1	1	2
Mass Communication	1	1	1	3	2	3	2	2	2	0	1	0
Mathematics	2	2	1	4	3	4	4	4	4	4	4	5
Modern & Classical Lang.	2	2	2	3	3	3	2	1	1	3	4	2
Phil. and Religious Studies	2	2	2	0	0	0	1	1	1	0	0	0
Political Science	1	1	1	2	1	2	4	4	4	0	0	0
Psychology	4	4	4	3	2	2	6	7	6	0	0	0
Social Work	2	2	2	1	1	1	2	2	2	0	0	0
Sociology	4	3	3	2	3	3	0	0	0	1	1	0
Speech	1	1	1	1	1	1	0	1	1	1	0	0
BUSINESS ADMIN.	12	11	11	19	19	17	10	8	10	1	1	0
Acc., Finance & Econ.	5	4	4	10	9	8	1	2	3	0	0	0
Comp. Sci. & Quant. Method	3	3	3	4	4	3	3	2	3	0	0	0
Management & Marketing	4	4	4	5	6	6	6	4	4	1	1	0
EDUCATION	12	13	11	9	13	15	14	12	10	4	2	2
Center for Pedagogy	1	2	2	3	4	4	5	5	4	2	2	2
Counseling & Leadership	4	3	3	1	3	3	1	1	0	0	0	0
Curriculum & Instruction	5	5	4	5	5	6	4	3	3	0	0	0
Health & Physical Education	2	3	2	0	1	2	4	3	3	2	0	0
VISUAL & PERF. ARTS	16	12	13	14	18	19	12	12	10	2	1	1
Art & Design	7	4	5	8	10	11	6	5	4	0	0	0
Music	7	6	7	3	4	4	4	5	3	1	1	1
Theatre and Dance	2	2	1	3	4	4	2	2	3	1	0	0
LIBRARY	3	2	2	4	5	4	7	7	7	0	0	0
TOTAL	79	73	71	86	90	93	82	77	76	25	21	15

* Includes Library.

**FULL-TIME INSTRUCTIONAL* FACULTY HEADCOUNT
BY GENDER AND DEPARTMENT
FALL 1998 - FALL 2000**

COLLEGE/DEPARTMENT	MALE			FEMALE		
	2000	1999	1998	2000	1999	1998
ARTS & SCIENCES	77	72	72	56	54	51
Biology	9	8	9	4	4	4
Chemistry & Physics	9	7	7	3	4	4
English	10	10	9	14	13	11
History	7	6	7	4	2	3
Human Nutrition	2	2	1	3	3	4
Mass Communication	4	4	5	2	2	1
Mathematics	11	11	11	3	2	3
Modern & Classical Lang.	4	4	3	6	7	5
Phil. and Religious Studies	3	3	3	0	0	0
Political Science	4	3	4	3	3	3
Psychology	7	7	6	6	6	6
Social Work	2	2	2	3	3	3
Sociology	4	4	4	3	3	2
Speech	1	1	1	2	2	2
BUSINESS ADMIN.	29	29	29	13	10	9
Acc., Finance & Econ.	13	12	12	3	3	3
Comp. Sci. & Quant. Method	9	9	9	1	0	0
Management & Marketing	7	8	8	9	7	6
EDUCATION	15	19	18	28	21	20
Center for Pedagogy	4	5	4	8	8	8
Counseling & Leadership	5	6	5	1	1	1
Curriculum & Instruction	4	5	6	13	8	7
Health & Physical Education	2	3	3	6	4	4
VISUAL & PERF. ARTS	28	29	25	16	14	18
Art & Design	15	15	12	6	4	8
Music	11	12	11	4	4	4
Theatre and Dance	2	2	2	6	6	6
LIBRARY	5	5	6	9	9	7
TOTAL	154	154	150	122	108	105

* Includes Library.

**FULL-TIME INSTRUCTIONAL * FACULTY
BY DEPARTMENT
FALL 1996 - FALL 2000**

COLLEGE/DEPARTMENT	Fall 1996		Fall 1997		Fall 1998		Fall 1999		Fall 2000	
	#	TT	#	TT	#	TT	#	TT	#	TT
ARTS & SCIENCES	123	103	124	102	123	105	126	104	133	112
Biology	13	13	13	13	13	11	12	11	13	12
Chemistry and Physics	10	8	11	9	11	10	11	10	12	10
English	23	18	22	17	20	18	23	18	24	18
History	10	9	10	9	10	9	8	7	11	10
Human Nutrition	4	3	4	3	5	3	5	4	5	4
Mass Communication	6	4	6	4	6	4	6	5	6	6
Mathematics	15	10	15	10	14	9	13	9	14	10
Modern and Classical Languages	8	6	8	6	8	6	11	6	10	6
Philosophy and Religious Studies	3	2	3	3	3	3	3	2	3	3
Political Science	6	6	7	6	7	6	6	5	7	7
Psychology	12	11	12	10	12	12	13	13	13	13
Social Work	5	5	4	3	5	5	5	5	5	5
Sociology	6	6	6	6	6	6	7	6	7	6
Speech	2	2	3	3	3	3	3	3	3	2
BUSINESS ADMINISTRATION**	39	35	39	37	38	36	39	36	42	39
Accounting, Finance, & Economics	15	15	14	14	15	15	15	15	16	16
Computer Science & Quant. Meth.	9	7	9	8	9	8	9	8	10	9
Management and Marketing	15	13	16	15	14	13	15	13	16	14
EDUCATION**	41	35	39	32	38	31	40	33	43	29
Center for Pedagogy	9	7	9	6	12	9	13	9	12	8
Counseling and Leadership	8	8	7	7	6	6	7	7	6	6
Curriculum and Instruction	16	15	15	13	13	11	13	11	17	11
Health and Physical Education	8	5	8	6	7	5	7	6	8	4
VISUAL & PERFORMING ARTS	40	37	42	38	43	39	43	38	44	37
Art and Design	18	18	19	19	20	19	19	17	21	18
Music	15	13	15	13	15	14	16	15	15	14
Theatre and Dance	7	6	8	6	8	6	8	6	8	5
LIBRARY	12	11	14	12	13	11	14	13	14	12
TOTAL	255	221	258	221	255	222	262	224	276	229

* Includes Library.

** In the College of Education and the College of Business Administration, faculty have moved between departments during the 5-year period shown.

Notes: # is headcount employed as of October 1; TT is number tenured or holding tenure track appointment.
Faculty on leave without pay are not counted;

**PART-TIME INSTRUCTIONAL FACULTY AND FTE
BY DEPARTMENT
FALL 1996 - FALL 2000**

COLLEGE/DEPARTMENT	FALL 1996		FALL 1997		FALL 1998		FALL 1999		FALL 2000		DIFF 96-00	
	#	FTE	#	FTE	#	FTE	#	FTE	#	FTE	#	FTE
ARTS & SCIENCES	53	22.32	53	22.82	57	26.31	57	27.97	56	26.08	3	3.76
Biology	4	2.50	4	2.00	5	2.82	6	4.32	5	2.91	1	0.41
Chemistry and Physics	6	2.15	3	0.91	6	1.83	6	2.16	7	1.99	1	-0.16
English	13	8.00	13	7.25	15	9.30	14	7.55	13	8.22	0	0.22
History	2	0.50	2	0.50	2	0.50	5	1.74	4	1.00	2	0.50
Human Nutrition	3	0.75	4	1.25	4	2.24	3	1.25	3	0.75	0	0.00
Mass Communication	1	0.25	1	0.33	1	0.33	2	1.00	4	1.33	3	1.08
Mathematics	1	0.50	1	1.00	2	1.49	2	1.41	1	0.25	0	-0.25
Modern and Classical Languages	8	3.39	10	3.00	10	3.74	9	4.23	7	5.89	-1	2.50
Philosophy and Religious Studies	0	0.00	1	0.75	0	0.00	0	0.00	0	0.00	0	0.00
Political Science	6	1.53	2	0.50	4	1.00	3	1.74	3	0.75	-3	-0.78
Psychology	6	1.50	8	3.00	7	2.24	4	1.00	4	1.49	-2	-0.01
Social Work	0	0.00	2	0.75	0	0.00	2	0.75	4	1.00	4	1.00
Sociology	1	0.25	1	1.00	1	0.83	0	0.00	1	0.50	0	0.25
Speech	2	1.00	1	0.58	0	0.00	1	0.83	0	0.00	-2	-1.00
BUSINESS ADMINISTRATION*	12	3.00	10	3.42	13	3.98	8	2.99	11	3.81	-1	0.81
Accounting, Finance & Econ.	3	0.75	4	1.25	5	1.74	3	1.25	1	0.25	-2	-0.50
Computer Sci. & Quan. Meth.	0	0.00	0	0.00	1	0.25	1	0.50	1	0.49	1	0.49
Management and Marketing	9	2.25	6	2.17	7	1.99	4	1.25	9	3.07	0	0.82
EDUCATION*	31	8.18	30	8.42	37	12.37	40	15.36	36	13.93	5	5.75
Center for Pedagogy	2	0.75	4	1.42	8	2.74	18	6.23	5	1.74	3	0.99
Counseling and Leadership	15	4.00	16	4.25	9	2.99	1	0.25	1	0.49	-14	-3.51
Curriculum and Instruction	8	2.35	5	1.67	14	4.48	7	3.90	5	1.91	-3	-0.44
Health and Physical Education	6	1.08	5	1.08	6	2.16	14	4.98	7	1.99	1	0.91
Professional Development	*	*	*	*	*	*	*	*	18	7.80	18	7.80
VISUAL & PERFORMING ARTS	34	15.64	33	15.94	34	16.93	38	20.00	35	17.43	1	1.79
Art and Design	16	6.73	17	7.17	17	6.64	24	11.21	18	8.63	2	1.90
Music	13	6.56	13	7.44	15	8.96	11	7.89	13	6.81	0	0.25
Theatre and Dance	5	2.35	3	1.33	2	1.33	3	0.91	4	1.99	-1	-0.36
Critical Issues Symposium	0	0.00	0	0.00	0	0.00	0	0.00	1	0.17	1	0.17
PART-TIME TOTAL	130	49.14	126	50.60	141	59.59	143	66.32	139	62.25	9	13.11

* In the College of Education and the College of Business Administration, faculty have moved between departments during the 5-year period shown.

Notes: # is headcount employed as of October 1; FTE is teaching FTE only.

**AVERAGE FACULTY SALARY COMPARISONS
9-MONTH FACULTY
(IN THOUSANDS OF DOLLARS)
1996 - 2000**

RANK	1996-97		1997-98		1998-99		1999-00		2000-01	
	Salary	1-Yr Inc	Salary	1-Yr Inc	Salary	1-Yr Inc	Salary	1-Yr Inc	Salary	1-Yr Inc
Professor										
Winthrop**	51.1	4.6%	52.3	2.5%	52.9	3.0%	55.3	4.8%	56.6	2.4%
AAUP*	60.5	2.8%	61.8	3.0%	63.8	2.7%	66.7	4.6%	68.8	3.8%
Associate Professor										
Winthrop**	42.2	4.4%	43.0	2.7%	44.0	3.6%	45.8	4.6%	48.0	4.8%
AAUP*	48.5	2.9%	49.6	2.7%	51.0	2.8%	53.1	4.1%	54.8	3.8%
Assistant Professor										
Winthrop**	36.7	5.1%	37.0	3.2%	39.2	4.1%	40.0	4.0%	41.4	3.5%
AAUP*	40.2	2.5%	40.8	2.4%	42.0	2.9%	43.4	3.8%	45.1	3.9%
Instructor										
Winthrop**	27.3	6.4%	29.3	6.3%	29.3	6.5%	29.7	4.0%	31.1	4.7%
AAUP*	31.3	3.6%	31.1	0.8%	31.9	3.6%	33.2	4.0%	34.4	3.9%
All Ranks										
Winthrop**	42.7	4.7%	43.1	2.9%	44.3	3.6%	45.4	4.5%	46.8	3.1%
AAUP*	48.9	2.7%	49.9	2.5%	51.3	2.5%	53.0	3.6%	54.4	3.1%

* AAUP: American Association of University Professors Salary Survey for Comprehensive Public Institutions. Public Comprehensive Institutions

** From IPEDS Report: Salaries & Tenure of Full-Time Instructional Faculty.

**NUMBER AND PERCENT OF FULL-TIME BLACK
INSTRUCTIONAL FACULTY AT
S.C. PUBLIC COLLEGES AND UNIVERSITIES**

INSTITUTIONS	1996			1997			1998			1999			2000			96-00
	# Black	# Total	% Black	# Black	# Total	% Black	# Black	# Total	% Black	# Black	# Total	% Black	# Black	# Total	% Black	Change in %
The Citadel	2	151	1.3%	2	150	1.3%	4	155	2.6%	4	151	2.6%	4	146	2.7%	1.4%
Clemson	41	911	4.5%	42	922	4.6%	40	1,032	3.9%	34	1,040	3.3%	36	1,080	3.3%	-1.2%
Coastal Carolina	5	176	2.8%	5	187	2.7%	5	185	2.7%	3	181	1.7%	4	180	2.2%	-0.6%
College of Charleston	14	368	3.8%	14	368	3.8%	11	409	2.7%	15	430	3.5%	15	448	3.3%	-0.5%
Francis Marion	5	154	3.2%	6	161	3.7%	6	161	3.7%	5	159	3.1%	6	163	3.7%	0.4%
Lander	6	132	4.5%	5	134	3.7%	5	134	3.7%	5	127	3.9%	4	123	3.3%	-1.3%
S.C. State	144	227	63.4%	153	236	64.8%	144	224	64.3%	131	217	60.4%	143	227	63.0%	-0.4%
USC-Aiken	4	118	3.4%	4	96	4.2%	7	132	5.3%	8	134	6.0%	9	137	6.6%	3.2%
USC-Columbia	55	1,407	3.9%	54	1,421	3.8%	55	1,460	3.8%	59	1,453	4.1%	59	1,436	4.1%	0.2%
USC-Spartanburg	10	130	7.7%	13	107	12.1%	12	148	8.1%	13	145	9.0%	13	157	8.3%	0.6%
Winthrop	17	265	6.4%	17	266	6.4%	14	260	5.4%	16	263	6.1%	15	274	5.5%	-0.9%
Subtotal	276	3,644	7.6%	285	3,675	7.8%	277	3,892	7.1%	264	3,892	6.8%	280	3,940	7.1%	-0.5%

DEFINITIONS FOR FINANCIAL INFORMATION

The following schedules provides information taken from the IPEDS reports submitted by Winthrop for the four years 1995-1996 through 1999-2000. Information is grouped by type of funding and program.

Provided on the expenditure schedule is the percentage each program in the Educational and General Operations is (E&G) of total Educational and General Fund Revenue. If the total percentage of E&G expenditures exceeds 100%, this is an indication that revenue other than E&G revenue was used to support E&G activities.

Funding is summarized by Unrestricted and Restricted funds. Restricted funds are those funds received for specific purposes and not available to be used in general operations of the University.

Program descriptions are as follows:

INSTRUCTION: Expenditures for academic, vocational, remedial, and technical instruction.

LIBRARY: Expenditures for organized activities that directly support the operation catalogued or otherwise classified collection.

ACADEMIC SUPPORT: Expenditures to provide support services for instruction, services that directly assist the academic function, media support, academic administration, and course/curriculum development.

RESEARCH: Expenditures for activities specifically organized to produce research outcomes, whether commissioned by an agency external to the University or separately budgeted by the University.

PUBLIC SERVICE: Expenditures in providing noninstructional services beneficial to individuals and groups external to the institution.

STUDENT SERVICES: Expenditures for the office of admission, registrar and those activities whose primary purpose is to contribute to the student's emotional and physical well-being and to his or her intellectual, cultural and social development outside the context of the formal instruction program.

INSTITUTIONAL SUPPORT: Expenditures for the following categories: Central executive-level activities concerned with management and long-range planning of the entire institution; fiscal operations including accounting and payroll; administrative data processing; space management; employee personnel and records; logistical activities that provide procurement, storerooms, safety, security, printing and transportation services; support services to faculty and staff that are not operated as auxiliary enterprises; and community and alumni relations, including development and funding raising.

OPERATIONS AND MAINTENANCE OF PLANT: Expenditures of current operating funds for the operation and maintenance of physical plant follows: Physical plant administration; building maintenance; custodial services; utilities; landscaping and ground maintenance; and major repairs and renovations.

SCHOLARSHIPS AND FELLOWSHIPS: Expenditures for scholarships and fellowships in the form of out-right grants to students selected by the institution and financed from current funds, restricted or unrestricted.

MANDATORY TRANSFERS: Transfers from current fund groups to other fund groups arising from binding legal agreements related to the financing of educational plant facilities and grant agreements with agencies of the federal government, donors and other organizations to match gifts and grants to loan and other funds.

NONMANDATORY TRANSFERS: Transfer from the current fund groups for purposes such as additions to loan funds, general or specific plant additions, voluntary renewals and replacements of plant and prepayments on debt principal.

AUXILIARY OPERATIONS: An entity that exists to furnish goods and services to students, faculty or staff and that charges as fee directly related to, although not necessarily equal to, the cost of the goods or services. Examples of auxiliary operations at Winthrop are as follows: Housing, Cafeteria and health center, vending operations and laundry, and print shop.

IPEDS REPORT - CURRENT FUND REVENUE

SOURCE OF FUNDS	1999-2000	1998-1999	1997-1998	1996-1997	1995-1996
	\$ Amount	\$ Amount	\$ Amount	\$ Amount	\$ Amount
REVENUES-UNRESTRICTED					
Tuition & Fees	\$19,981,339	\$19,086,025	\$18,822,392	\$18,072,505	\$18,205,081
Government Appropriation					
Federal					
State	\$23,687,729	\$21,982,640	\$21,092,103	\$20,238,031	\$19,758,726
Local					
Government Grants and Contracts					
Federal	\$78,763	\$112,335	\$70,270	\$43,712	\$120,507
State					
Local					
Private Gifts, Grants & Contracts	\$391,694	\$213,955	\$214,055	\$132,474	\$351,775
Endowment Income					
Sales & Services	\$1,509,293	\$1,450,865	\$1,382,637	\$1,453,564	\$1,517,576
Hospitals					
Other Sources	\$1,479,271	\$1,503,171	\$912,650	\$1,022,697	\$839,546
Total Educational & General Revenues	\$47,128,089	\$44,348,991	\$42,494,107	\$40,962,983	\$40,793,211
Auxiliary Enterprises	\$9,848,000	\$9,323,578	\$9,266,157	\$9,030,301	\$8,791,817
Total Current Unrestricted Revenues	\$56,976,089	\$53,672,569	\$51,760,264	\$49,993,284	\$49,585,028
REVENUES-RESTRICTED					
Tuition & Fees					
Government Appropriation					
Federal					
State	\$2,809,215	\$2,580,816	\$844,331	\$841,146	
Local					
Government Grants and Contracts					
Federal	\$3,430,905	\$3,425,259	\$3,116,473	\$2,768,390	\$12,957,115
State	\$1,892,992	\$1,571,740	\$1,636,463	\$1,535,615	\$1,712,301
Local	\$94,557	\$91,462	\$79,070	\$123,564	\$77,004
Private Gifts, Grants & Contracts	\$646,123	\$612,581	\$549,428	\$521,891	\$466,348
Endowment Income	\$28,565	\$60,638	\$63,549	\$59,971	\$52,908
Sales & Services					
Hospitals					
Other Sources					
Total Educational & General Revenues	\$8,902,357	\$8,342,496	\$6,289,314	\$5,850,577	\$15,265,676
Auxiliary Enterprises					
Total Current Restricted Revenues	\$8,902,357	\$8,342,496	\$6,289,314	\$5,850,577	\$15,265,676
REVENUES-TOTAL					
Tuition & Fees	\$19,981,339	\$19,086,025	\$18,822,392	\$18,072,505	\$18,205,081
Government Appropriation					
Federal					
State	\$26,496,944	\$24,563,456	\$21,936,434	\$21,079,177	\$19,758,726
Local					
Government Grants and Contracts					
Federal	\$3,509,668	\$3,537,594	\$3,186,743	\$2,812,102	\$13,077,622
State	\$1,892,992	\$1,571,740	\$1,636,463	\$1,535,615	\$1,712,301
Local	\$94,557	\$91,462	\$79,070	\$123,564	\$77,004
Private Gifts, Grants & Contracts	\$1,037,817	\$826,536	\$763,483	\$654,365	\$818,123
Endowment Income	\$28,565	\$60,638	\$63,549	\$59,971	\$52,908
Sales & Services	\$1,509,293	\$1,450,865	\$1,382,637	\$1,453,564	\$1,517,576
Hospitals					
Other Sources	\$1,479,271	\$1,503,171	\$912,650	\$1,022,697	\$839,546
Total Educational & General Revenues	\$56,030,446	\$52,691,487	\$48,783,421	\$46,813,560	\$56,058,887
Auxiliary Enterprises	\$9,848,000	\$9,323,578	\$9,266,157	\$9,030,301	\$8,791,817
Total Current Revenues	\$65,878,446	\$62,015,065	\$58,049,578	\$55,843,861	\$64,850,704

IPEDS - EDUCATIONAL & GENERAL EXPENDITURES AS A % OF REVENUE

Current Fund Educational & General Revenues:	1999-2000		1998-1999		1997-1998		1996-1997		1995-1996	
	\$ Amount	%	\$ Amount	%	\$ Amount	%	\$ Amount	%	\$ Amount	%
Unrestricted	\$47,128,089	84.11%	\$44,348,991	84.17%	\$42,494,107	87.11%	\$40,962,983	87.50%	\$40,793,211	72.77%
Restricted	\$8,902,357	15.89%	\$8,342,496	15.83%	\$6,289,314	12.89%	\$5,850,577	12.50%	\$15,265,676	27.23%
Total	\$56,030,446	100.00%	\$52,691,487	100.00%	\$48,783,421	100.00%	\$46,813,560	100.00%	\$56,058,887	100.00%
FUNCTION OF EXPENDITURES										
	1999-2000		1998-1999		1997-1998		1996-1997		1995-1996	
Current Unrestricted Expenditures and % E & G Expenditures to Unrestricted E & G Revenue										
Educational and General:										
Instruction	\$20,043,326	42.69%	\$18,321,282	41.87%	\$17,726,129	42.06%	\$17,566,789	41.93%	\$16,583,650	39.83%
Research	\$55,509	0.12%	\$21,751	0.05%	\$25,665	0.06%	\$58,528	0.14%	\$27,102	0.07%
Public Service	\$1,351,607	2.88%	\$1,366,491	3.12%	\$1,174,266	2.79%	\$1,295,342	3.09%	\$1,372,680	3.30%
Academic Support	\$3,270,523	6.97%	\$3,363,518	7.69%	\$2,901,276	6.88%	\$3,068,005	7.32%	\$2,668,038	6.41%
Library	\$2,270,639	4.84%	\$1,935,643	4.42%	\$1,914,107	4.54%	\$1,803,660	4.31%	\$1,775,660	4.26%
Student Services	\$5,695,558	12.13%	\$5,294,526	12.10%	\$5,005,174	11.88%	\$4,751,414	11.34%	\$4,594,045	11.03%
Institutional Support	\$5,558,628	11.84%	\$5,653,468	12.92%	\$5,471,886	12.98%	\$5,479,965	13.08%	\$5,992,244	14.39%
Operation & Maintenance	\$5,756,253	12.26%	\$4,818,307	11.01%	\$4,780,787	11.34%	\$4,717,148	11.26%	\$4,941,220	11.87%
Scholarships	\$3,066,767	6.53%	\$3,050,797	6.97%	\$3,099,890	7.35%	\$3,108,658	7.42%	\$3,015,825	7.24%
Mandatory Transfers	\$2,783	0.01%	\$3,799	0.01%	\$4,347	0.01%	\$2,529	0.01%	\$650,702	1.56%
Nonmandatory Transfers	(\$123,131)	-0.26%	(\$70,128)	-0.16%	\$45,154	0.11%	\$39,289	0.09%	\$12,743	0.03%
Total Educ & Gen Exp.	\$46,948,462	100.00%	\$43,759,454	100.00%	\$42,148,681	100.00%	\$41,891,327	100.00%	\$41,633,909	100.00%
Auxiliary Enterprises	\$9,314,085		\$8,393,908		\$8,358,903		\$7,521,361		\$7,747,708	
Total Current Unrestricted Exp.	\$56,262,547		\$52,153,362		\$50,507,584		\$49,412,688		\$49,381,617	
Current Restricted Expenditures and % E & G Expenditures to Restricted E & G Revenue										
Educational and General:										
Instruction	\$503,267	5.65%	\$307,400	3.69%	\$388,380	6.10%	\$297,784	4.99%	\$271,767	1.79%
Research	\$187,081	2.10%	\$217,949	2.62%	\$208,857	3.28%	\$237,749	3.98%	\$259,890	1.71%
Public Service	\$2,182,820	24.52%	\$2,190,581	26.29%	\$1,966,836	30.90%	\$1,896,628	31.77%	\$2,031,415	13.39%
Academic Support	\$9,014	0.10%	\$1,781	0.02%	\$3,950	0.06%	\$10,783	0.18%		
Library										
Student Services	\$108	0.00%			\$320	0.01%	\$17,540	0.29%	\$15,582	0.10%
Institutional Support							\$22,569	0.38%		
Operation & Maintenance										
Scholarships	\$6,020,067	67.62%	\$5,624,785	67.51%	\$3,720,971	58.45%	\$3,367,524	56.41%	\$12,687,022	83.61%
Mandatory Transfers										
Nonmandatory Transfers			(\$10,644)	-0.13%	\$76,288	1.20%	\$118,694	1.99%	(\$91,916)	-0.61%
Total Educ & Gen Exp.	\$8,902,357	100.00%	\$8,331,852	100.00%	\$6,365,602	100.00%	\$5,969,271	100.00%	\$15,173,760	100.00%
Auxiliary Enterprises										
Total Current Restricted Exp.	\$8,902,357		\$8,331,852		\$6,365,602		\$5,969,271		\$15,173,760	
Current Expenditures and % E & G Expenditures to Total E & G Revenue										
Educational and General:										
Instruction	\$20,546,593	36.79%	\$18,628,682	35.76%	\$18,114,509	37.34%	\$17,864,573	37.33%	\$16,855,417	29.67%
Research	\$242,590	0.43%	\$239,700	0.46%	\$234,522	0.48%	\$296,277	0.62%	\$286,992	0.51%
Public Service	\$3,534,427	6.33%	\$3,557,072	6.83%	\$3,141,102	6.47%	\$3,191,970	6.67%	\$3,404,095	5.99%
Academic Support	\$3,279,537	5.87%	\$3,365,299	6.46%	\$2,905,226	5.99%	\$3,078,788	6.43%	\$2,668,038	4.70%
Library	\$2,270,639	4.07%	\$1,935,643	3.72%	\$1,914,107	3.95%	\$1,803,660	3.77%	\$1,775,660	3.13%
Student Services	\$5,695,666	10.20%	\$5,294,526	10.16%	\$5,005,494	10.32%	\$4,768,954	9.96%	\$4,609,627	8.11%
Institutional Support	\$5,558,628	9.95%	\$5,653,468	10.85%	\$5,471,886	11.28%	\$5,502,534	11.50%	\$5,992,244	10.55%
Operation & Maintenance	\$5,756,253	10.31%	\$4,818,307	9.25%	\$4,780,787	9.85%	\$4,717,148	9.86%	\$4,941,220	8.70%
Scholarships	\$9,086,834	16.27%	\$8,675,582	16.65%	\$6,820,861	14.06%	\$6,476,182	13.53%	\$15,702,847	27.64%
Mandatory Transfers	\$2,783	0.00%	\$3,799	0.01%	\$4,347	0.01%	\$2,529	0.01%	\$650,702	1.15%
Nonmandatory Transfers	-\$123,131	-0.22%	-\$80,772	-0.16%	\$121,442	0.25%	\$157,983	0.33%	-\$79,173	-0.14%
Total Educ & Gen Expenditures	\$55,850,819	100.00%	\$52,091,306	100.00%	\$48,514,283	100.00%	\$47,860,598	100.00%	\$56,807,669	100.00%
Auxiliary Enterprises	\$9,314,085		\$8,393,908		\$8,358,903		\$7,521,361		\$7,747,708	
Total Current Expenditures	\$65,164,904		\$60,485,214		\$56,873,186		\$55,381,959		\$64,555,377	

ACADEMIC YEAR STUDENT FEES 1990-2000

STUDENT FEES	1990-91	1991-92	1992-93	1993-94	1994-95	1995-96	1996-97	1997-98	1998-99	1999-00	2000-01
TUITION											
In-State	2,568	2,826	3,112	3,470	3,620	3,716	3,818	3,918	4,032	4,126	4,262
% Difference	10.9%	10.0%	10.1%	11.5%	4.3%	2.7%	2.7%	2.6%	2.9%	2.3%	3.3%
Out-of-State	4,612	5,038	5,512	6,110	6,400	6,672	6,860	7,046	7,250	7,434	7,680
% Difference	12.0%	9.2%	9.4%	10.8%	4.7%	4.3%	2.8%	2.7%	2.9%	2.5%	3.3%
ROOM & BOARD											
Room	1,708	1,810	1,900	1,990	2,058	2,110	2,216	2,260	2,360	2,420	2,500
% Difference	21.3%	6.0%	5.0%	4.7%	3.4%	2.5%	5.0%	2.0%	4.4%	2.5%	3.3%
Board	960	1,120	1,232	1,290	1,334	1,378	1,446	1,504	1,544	1,602	1,656
% Difference	11.1%	16.7%	10.0%	4.7%	3.4%	3.3%	4.9%	4.0%	2.7%	3.8%	3.4%
TOTAL FEES											
In-State	5,236	5,756	6,244	6,750	7,012	7,204	7,480	7,682	7,936	8,148	8,418
% Difference	14.1%	9.9%	8.5%	8.1%	3.9%	2.7%	3.8%	2.7%	3.3%	2.7%	3.3%
Out-of-State	7,280	7,968	8,644	9,390	9,792	10,160	10,522	10,810	11,154	11,456	11,836
% Difference	13.9%	9.5%	8.5%	8.6%	4.3%	3.8%	3.6%	2.7%	3.2%	2.7%	3.3%

Note: % Difference is the percent change from the previous year to the current year.

AID AWARDED TO ENROLLED UNDERGRADUATE FOR AY1999-2000

Scholarship/Grant	Need-based aid	Non-need-based aid
	Total Dollars	Total Dollars
Federal	\$2,776,127	\$0
State	\$1,383,682	\$2,442,712
Other external scholarship/ grants administered by college	\$212,078	\$636,236
Institutional	\$734,645	\$2,203,935
Total Scholarships/Grants*	\$5,106,532	\$5,282,883
Self-Help		
Student loans	\$6,416,851	\$4,408,133
Federal work study	\$200,000	
State and other work study/ employment	\$0	\$1,215,608
Total Self help*	\$6,616,851	\$5,623,741
Parent loans	\$0	\$1,215,608
Tuition Waivers	\$0	\$98,730
Athletic Awards	\$242,105	\$363,158

NUMBER OF ENROLLED STUDENTS RECEIVING AID FOR FALL 1999

	First-time, full-time freshman	Full-time Undergraduate	Less than full-time
A. # of degree-seeking students.	903	4,016	470
B. # of students in line A who were financial aid applicants.	626	2,836	188
C. # of students in line B who were determined to have financial need.	479	2,188	142
D. # of students in line C who received any financial aid.	455	2,079	128
E. # of students in line D who received any need-based gift aid.	363	1,599	95
F. # of students in line D who received any need-based self-help aid.	428	1,847	133
G. # of students in line D who received any non-need-based gift aid.	172	520	7
H. # of students in line D whose need was fully met.	160	686	31
I. On average, the % of need that was met of students who received any need-based aid. Exclude any resources that were awarded to replace EFC.	66%	72%	55%
J. The average financial aid package of those in line c. Exclude any resources that were awarded to replace EFC.	\$5,201	\$5,639	\$3,700
K. Average need-based gift award of those in line D.	\$3,201	\$3,194	\$1,250
L. Average need-based self-help award (excluding PLUS loans and private alternative loans) of those in line D.	\$3,116	\$3,582	\$3,100
M. Average need-based loan (excluding PLUS loans and private alternative loans) of those in line D.	\$2,882	\$3,472	\$3,100
N. Number of students in line A who had no financial need who received non-need-based aid (exclude those receiving athletic awards and tuition benefits).	189	642	14
O. Average award to students in line N.	\$3,400	\$3,400	\$300
P. Number of students in line A who received a non-need-based athletic award.	27	80	0
Q. Average non-need-based athletic award to those in line P.	\$3,000	\$3,200	\$0

Note: Students may be counted in more than one row, and full-time freshmen should also be counted as full-time undergraduates.

Distribution of Loans

Year / Type of Loan	Number**	\$ Amount	% of #	% of \$
1996-1997 Total	4,514	\$11,736,127	100.0%	100.0%
Direct Loan Program*	3,707	\$10,016,306	82.1%	85.3%
Perkins Loan	459	\$385,024	10.2%	3.3%
PLUS Program	191	\$699,195	4.2%	6.0%
Teachers Loan Program	157	\$635,602	3.5%	5.4%
1997-1998 Total	4,704	\$12,661,085	100.0%	100.0%
Direct Loan Program*	3,871	\$10,772,763	82.3%	85.1%
Perkins Loan	426	\$294,474	9.1%	2.3%
PLUS Program	249	\$959,410	5.3%	7.6%
Teachers Loan Program	158	\$634,438	3.4%	5.0%
1998-1999 Total	4,985	\$13,047,204	100.0%	100.0%
Direct Loan Program*	3,956	\$10,847,489	79.4%	83.1%
Perkins Loan	563	\$397,034	11.3%	3.0%
PLUS Program	296	\$1,219,490	5.9%	9.3%
Teachers Loan Program	170	\$583,191	3.4%	4.5%
1999-2000 Total	4,933	\$14,306,919	100.0%	100.0%
Direct Loan Program*	4,104	\$12,296,475	83.2%	85.9%
Perkins Loan	455	\$415,380	9.2%	2.9%
PLUS Program	221	\$1,063,070	4.5%	7.4%
Teachers Loan Program	153	\$531,994	3.1%	3.7%
2000-2001 Total	4,677	\$13,904,292	100.0%	100.0%
Direct Loan Program*	3,909	\$11,631,157	83.6%	83.7%
Perkins Loan	366	\$393,050	7.8%	2.8%
PLUS Program	228	\$1,253,472	4.9%	9.0%
Teachers Loan Program	174	\$626,613	3.7%	4.5%

* Represents # of Subsidized Loan and Unsubsidized Loans made, not actual # of recipients. Actual # of recipients would be a smaller number.

** Counts are duplicated and reflect multiple loans.

MAJOR BUILDINGS ON CAMPUS

BUILDINGS	COMPLETED	LATEST RENOVATION	TOTAL SQ. FEET	CLASSROOMS & LABS	OFFICES	RES HALL BEDS	CLASS-ROOMS	LABS
Academic Computing Center	1939	1986	6,718	2	4	0	0	2
Bancroft Building	1909	1985	86,796	15	116	0	10	7
Breazeale Hall	1924	1977	58,255	-	-	-	-	-
Byrnes Auditorium	1939	1969	68,422	1	1	0	0	1
Canterbury House	1937	1983	3,295	0	6	0	0	0
Culp Chiller Plant	1969	1995	5,508	0	0	0	0	0
Central Energy Facility	1964		15,583	0	0	0	0	0
Central Warehouse & Maintenance	1967		23,675	0	7	0	0	0
Columbia Seminary Chapel	1936		1,339	-	-	-		
Conservatory of Music	1939	1994	35,662	48	7	0	4	48
Crawford Health Center	1896	1983	16,038	0	22	0	0	0
Dacus Library	1969		90,612	1	7	0	1	0
Dinkins Student Center	1966		46,450	0	24	0	0	0
Good Building	1950	1991	2,810	0	1	0	0	0
Johnson Hall	1920	1993	62,425	13	18	0	5	6
Joynes Conference Center	1926	1985	30,077	0	5	0	0	0
Kinard Hall	1929	1987	77,156	38	62	0	28	11
Lee Wicker Hall	1962	1971	69,382	0	2	290	0	0
Life Sciences Building	1999		65,417	0	26	0	2	12
McBryde Hall	1894	1990	44,903	0	5	0	0	0
McLaurin Hall	1901	1985	53,660	51	60	0	0	45
Margaret Nance Hall	1895	1987	59,352	0	8	223	0	0
Peabody Gymnasium	1915	1978	53,118	14	20	0	6	1
Phelps Hall	1943	1990	90,799	0	1	402	0	0
President's Home	1890	1983	9,151	0	0	0	0	0
Richardson Hall	1966		87,020	1	1	417	0	41
Roddey Apartments	1920	1989	62,118	0	1	96	0	0
Rutledge Building	1906	1989	52,289	22	1	0	2	18
Sellars	1930	1995	2,020	0	0	0	0	0
Shack	1900	1960	5,836	0	0	0	0	0
Sims Hall	1961	1968	57,696	31	24	0	5	25
Stewart House	1895	1990	8,307	0	8	0	0	0
Sykes House	1900	1979	5,627	0	13	0	0	0
Thomson Cafeteria	1964	1988	26,859	0	3	0	0	0
Thomson Hall	1964	1988	85,434	0	6	325	0	0
Thurmond Building	1939		62,057	15	72	0	12	2
Tillman Hall	1894	1989	115,264	2	119	0	1	1
Winthrop Coliseum	1982		166,441	0	26	0	0	0
Winthrop Lodge	1966	1980	35,763	0	2	202	0	0
Withers / WTS Building	1892	1996	106,076	16	81	0	17	3
Wofford Hall	1967		92,794	0	1	417	0	0
Total			2,048,204	270	760	2,372	93	223

LAND AREA OF CAMPUS	
Total Area:	418 Acres
Main Campus:	94 Acres

BOOK VALUE OF CAMPUS	
Equipment:	\$5,237,134
Land & Improvement:	\$1,131,020
Buildings:	\$81,236,081
Library Books:	\$8,898,323
Construction in Progress:	\$13,183,623
Equipment Under Capital Lease:	\$168,484
TOTAL:	\$109,854,665

RESIDENCE HALL OCCUPANCY FALL 2000

RESIDENCE HALL/APARTMENT	CAPACITY	UNDERGRAD		GRADUATE		TOTAL	TOTAL as % of CAPACITY
		MEN	WOMEN	MEN	WOMEN		
RESIDENCE HALLS	2,256	547	1,527	4	9	2,087	92.5%
Lee Wicker	290	0	277	0	1	278	95.9%
Margaret Nance	223	0	208	0	1	209	93.7%
Phelps	399	0	381	0	3	384	96.2%
Richardson	412	376	0	0	0	376	91.3%
Thomson*	325	111	198	0	1	310	95.4%
Winthrop Lodge*	192	60	80	4	2	146	76.0%
Wofford	415	0	383	0	1	384	92.5%
APARTMENT							
Roddey	88	34	44	3	7	88	100.0%
GRAND TOTAL	2,344	581	1,571	7	16	2,175	92.8%

* COED CAPACITY FOR	Men	Women
THOMSON	132	193
WINTHROP LODGE	91	100

RESIDENCE HALL OCCUPANCY FALL 1999

RESIDENCE HALL/APARTMENT	CAPACITY	UNDERGRAD		GRADUATE		TOTAL	TOTAL as % of CAPACITY
		MEN	WOMEN	MEN	WOMEN		
RESIDENCE HALLS	2,254	499	1,594	4	10	2,107	93.5%
Lee Wicker	290	0	285	0	1	286	98.6%
Margaret Nance	223	0	211	0	4	215	96.4%
Phelps	399	0	391	0	2	393	98.5%
Richardson	411	339	0	2	0	341	83.0%
Thomson*	325	103	197	0	2	302	92.9%
Winthrop Lodge*	191	57	104	2	0	163	85.3%
Wofford	415	0	406	0	1	407	98.1%
APARTMENT							
Roddey	71	24	42	0	5	71	100.0%
GRAND TOTAL	2,325	523	1,636	4	15	2,178	93.7%

* COED CAPACITY FOR	Men	Women
THOMSON	132	193
WINTHROP LODGE	91	100

**WINTHROP UNIVERSITY LIBRARY STATISTICS
1993 - 2000**

DESCRIPTION	1993-94	1994-95	1995-96	1996-97	1997-98	1998-99	1999-2000
LIBRARY STAFF	32.25	32.25	32.25	32.25	32.25	32.25	31
Professional Librarians	14	14	14	14	14	14	14
Para-Professionals	16.75	16.75	16.75	16.75	16.75	18.75	16
Clericals	1.50	1.50	1.50	1.50	1.50	1.50	1
HOLDINGS							
Volumes in Book Stock	357,110	363,606	369,149	369,149	377,664	381,168	420,320
Shelving Capacity (Volumes)	400,000	400,000	400,000	400,000	400,000	400,000	400,000
U.S. Government Documents	171,443	176,145	180,008	180,008	182,380	182,380	0***
Units of Microtext	1,026,572	1,060,158	1,099,337	1,099,337	1,153,075	1,206,630	1,215,640
Audio Recordings (Discs & Cassettes)	1,755	1,761	1,783	1,763	1,798	1,826	1,539
Maps	2,388	2,391	2,420	2,420	2,465	2,501	2,515
CD-ROM Titles	58	60	71	71	117	155	224
Total Bound Periodicals & Serials	70,037	71,996	73,819	73,819	73,605	74,906	75,665
Total Current Subscription							
Serial Titles Regularly Received	3,891	2,367**	2,707**	2,707**	2667**	2706**	2639**
Archives (Approximate Piece Count)	2,343,301	2,363,185	2,377,350	2,377,350	2,506,675	2,550,920	2,575,074
TOTAL OPERATING EXPENDITURES	\$1,598,604	\$1,687,599	\$1,775,660	\$1,803,660	\$1,914,107	\$1,935,643	\$2,108,750
STUDENTS							
Student Headcount Enrollment (Fall)	5,107	5,165	5,308	5,402	5,574	5,591	5,840
Expenditures per Student	\$313	\$327	\$309	\$334	\$343	\$346	\$361
Volumes in Book Stock per Student	70	70	70	68	68	68	72
Students per Library Staff Member	158	160	165	168	173	173	188
Students per Librarian	365	369	379	386	398	399	417

** Not comparable with years earlier than 1994-95 due to change in definitions.

***U.S. Government Documents are now included in the total volume

INFORMATION TECHNOLOGY

ACADEMIC COMPUTING

Winthrop University Academic Computing supports the instructional and research functions of the University. Within the Division of Information Technology, Academic Computing provides access to diverse computing resources. These resources includes a 500 MHz DEC UNIX AlphaServer, other DEC UNIX servers and workstations, Windows NT microcomputer networks, laboratories with stand-alone microcomputers, and access to DEC VMS clustered AlphaServers. Over 15 computer laboratories supporting PC and Macintosh standards are available on campus for open access and instructional needs.

Winthrop's host computers have an assortment of programming languages such as Ada, BASIC, C, C++, COBOL, Fortran, Java, LISP, and Pascal. Two major statistical and computational packages, SAS and Mathematica, are also available. Microcomputer networks and laboratories provide computing resources for support of instructional and research applications. Typical applications include desktop publishing, database management, spreadsheet analysis, graphics, communications, Internet, and word processing.

Dial-up services provide students and faculty with 24 hour access to Winthrop's network and computing facilities. All main campus buildings are directly connected to the campus network through fiber optic cable. Winthrop is also a node on the Internet. Faculty, staff, and students are provided access to e-mail and Internet.

The Academic Computing Center also provides computer access for visually impaired students, as well as Braille printing services.

General operational hours for the Academic Computing Center are Monday through Thursday, 8:00a.m - 1:00a.m.; Friday, 8:00a.m. - 5:00p.m.; Saturday, Noon - 5:00p.m.; and Sunday, Noon - 1:00a.m.

DISTANCE LEARNING

Winthrop University is a leader in instructional technology, featuring the Distance Education Classroom in the College of Business Thurmond Building. Utilizing a T1 digital configuration, classes in Winthrop's Distance Education Classroom are fully interactive between Winthrop and the remote site. Students and teachers communicate with each other simultaneously in classrooms outfitted with robotic cameras, TV monitors, desk microphones, and a fully equipped television control room.

MBA candidates at Coastal Carolina University in Conway, SC, are already online with Winthrop to take advantage of this learning opportunity. Winthrop's MBA degree is the same AACSB accredited program that has enjoyed more than 20 years of success serving the Charlotte Metrolina region.

Dual credit courses are also offered over the T1 circuit and through the BEACON network to local area high schools using an ATM fiber network.

CAREER SERVICES

NUMBER OF CO-OP/INTERNSHIPS

SCHOOL/COLLEGE	1992-93	1993-94	1994-95	1995-96	1996-97	1997-98	1998-99	1999-00
ARTS & SCIENCES	12	25	24	56	62	46	40	41
BUSINESS ADMINISTRATION	55	57	46	42	58	65	47	55
EDUCATION	6	12	6	5	4	2	6	21
VISUAL & PERFORMING ARTS	17	36	24	32	20	26	21	27
TOTAL	90	130	100	135	144	139	114	144

NUMBER OF CO-OP EMPLOYERS

YEAR	A&S	Business	Education	VPA	Total
1999-00	30	38	16	16	100
1998-99	37	40	6	25	108
1997-98	44	57	2	26	129
1996-97	55	48	4	19	126
1995-96	50	35	5	32	122
1994-95	16	56	2	14	88
1993-94	21	52	11	10	94
1992-93	11	43	6	17	77
TOTAL	264	369	52	159	844

CO-OP CREDIT HOURS

	A&S	Business	Education	VPA	Total
1999-00					
# of Students	32	22	20	25	99
Credit Hours Earned	49	51	63	75	238
Tuition (\$172/credit hour)	\$8,428	\$8,772	\$10,836	\$12,900	\$40,936
1998-99					
# of Students	27	28	5	18	78
Credit Hours Earned	55	67	15	54	191
Tuition (\$168/credit hour)	\$9,240	\$11,256	\$2,520	\$9,072	\$32,088
1997-98					
# of Students	28	22	1	23	74
Credit Hours Earned	51.0	60.0	3.0	69.0	183.0
Tuition (\$160/credit hour)	\$8,160	\$9,600	\$480	\$11,040	\$29,280
1996-97					
# of Students	34	21	4	18	77
Credit Hours Earned	68.0	45.0	15.0	54.0	182.0
Tuition (\$159/credit hour)	\$10,812	\$7,155	\$2,385	\$8,586	\$28,938
1995-96					
# of Students	43	27	5	30	105
Credit Hours Earned	62.0	44.0	10.0	90.0	206.0
Tuition (\$145/credit hour)	\$9,548	\$6,776	\$1,540	\$13,860	\$31,724
1994-95					
# of Students	21	43	6	23	93
Credit Hours Earned	32.0	53.0	14.0	69.0	168.0
Tuition (\$145/credit hour)	\$4,640	\$7,685	\$2,030	\$10,005	\$24,360

JOB FIND

	1992-93	1993-94	1994-95	1995-96	1996-97	1997-98	1998-99	1999-00
Total Employers	311	371	476	450	411	361	547	480
First-Time Employers	126	137	226	184	283	223	224	203
Repeat Employers	185	234	250	266	128	138	323	277
# of Jobs Posted	318	460	542	684	935	1104	1,042	600
# of Students Placed	311	321	259	310	240	259	324	118
Total Earnings*	\$1,377,021	\$1,438,727	\$807,447	\$1,241,167	\$535,430	\$783,563	\$1,054,503	\$416,541
Yearly Avg. Earned per Student	\$3,349	\$4,482	\$3,118	\$4,004	\$2,231	\$3,025	\$3,255	\$3,255
Avg. Hourly Wage per Student	\$4.81	\$5.00	\$6.00	\$5.30	\$5.47	\$5.13	\$6.27	\$5.59
Avg. Hrs. Worked per Week per Stu.	25.24	19.13	20.00	20.00	15.00	15.50	26.24	14.57

*Estimated earnings based on average hours worked and money earned per week for each student placed.
 Note: Students no longer register with open board system

JOB LISTINGS POSTED AT CAREER SERVICES

YEAR	# General Job Listings	# of Co-op Listings	# Job Find Referrals	# Resume Referrals	On Campus Recruiters	Total Jobs Listed
1999-00	43,009	128	660	342	24	44,163
1998-99	34,843	230	1042	375	21	36,511
1997-98	33,184	348	1104	112	24	34,772
1996-97	21,604	396	935	110	28	23,073
1995-96	25,000	227	684	61	22	25,994
1994-95	23,218	117	542	59	45	23,981
1993-94	12,346	120	460	140	59	13,125
1992-93	11,121	140	318	196	53	11,828
TOTAL	204,325	1,706	5,745	1,395	276	213,447