

WINTHROP UNIVERSITY MISSION STATEMENT

Winthrop University provides personalized and challenging undergraduate, graduate, and continuing professional education programs of national caliber within a context dedicated to public service to the State of South Carolina. All eligible bachelor's, master's and specialist degrees in the liberal arts and sciences, education, business and the visual and performing arts are nationally accredited – part of the University's commitment to be among the very best institutions of its kind in the nation.

Building on its origins as a women's college, the Winthrop University of the 21st century is achieving national recognition as a competitive and distinctive, co-educational, public, residential comprehensive teaching institution.

Winthrop enrolls an achievement-oriented, culturally diverse and socially responsible student body of 6,000 students and will remain a medium-sized comprehensive teaching university for the foreseeable future. The University recruits South Carolina's best students as well as highly qualified students from beyond the state whose presence adds diversity and enrichment to the campus and state. Winthrop prides itself on being an institution of choice for groups traditionally under-represented on the college campus.

Winthrop's historic campus, located in a dynamic city within a major metropolitan area, provides a contemporary and supportive environment that promotes student learning and development. Winthrop has a diverse and able faculty and professional staff of national caliber and supports their work as effective teachers, scholars, researchers, practitioners, and creative artists. Through this talented group, Winthrop students acquire and develop knowledge, skills, and values that enrich their lives and prepare them to meet the needs and challenges of the contemporary world, including the ability to communicate effectively, appreciate diversity, work collaboratively, synthesize knowledge, and adapt to change. Ongoing assessment of programs and services ensures both that all academic programs challenge students at their highest level of ability and that the library, instructional technology and other academic service areas support courses of study that are consonant with current methods and knowledge. As a result, Winthrop graduates are eminently well prepared to assume successful careers in business, industry, government, education, the arts, and human services, as well as to enter the most competitive graduate or professional schools.

(Adopted by the Winthrop University Board of Trustees - 6/12/98)

(Update Adopted by the Winthrop University Board of Trustees - 11/3/00)

STATEMENTS ON ACCREDITATION

Winthrop University is accredited by the Commission on Colleges of the Southern Association of Colleges and Schools to award bachelor's, master's and specialist degrees. A total of 41 undergraduate and 25 graduate degree programs are available in the College of Arts and Sciences, the College of Business Administration, the Richard W. Riley College of Education and the College of Visual and Performing Arts. Within the four colleges more than 80 undergraduate and 40 graduate programs of study are offered through concentrations and options.

Winthrop's academic programs are measured by national standards of quality. Each academic program that can be nationally accredited through a professional specialized organization has earned that distinction. The documents of accreditation reside in the Office of Academic Affairs. The following is a listing of the specialized organizations that Winthrop University is affiliated with:

Accrediting Council on Education in Journalism and Mass Communication (ACEJMC)

American Chemical Society (ACS)

Association to Advance Collegiate Schools of Business (AACSB International)

Certified Financial Planner Board of Standards (CFP)

Commission on Accreditation for Dietetics Education (CADE)

Commission on Accreditation of Allied Health Education Programs (CAAHEP)

Computing Accreditation Commission of the Accreditation Board for Engineering and Technology, Inc. (CAC/ABET)

Council for Accreditation of Counseling and Related Educational Programs (CACREP)

Council for Interior Design Accreditation (CIDA)

Council on Social Work Education (CSWE)

National Association of the Education of Young Children (NAEYC)

National Association of School Psychologists (NASP)

National Association of Schools of Art and Design (NASAD)

National Association of Schools of Dance (NASD)

National Association of Schools of Music (NASM)

National Association of Schools of Theatre (NAST)

National Council for the Accreditation of Teacher Education (NCATE)

Sport Management Program Review Council (SMPRC)

http://www.winthrop.edu/acad_aff/accred.html

**WINTHROP UNIVERSITY BOARD OF TRUSTEES
2009-2010**

ELECTED MEMBERS	CONGRESSIONAL DISTRICT	TERM EXPIRES
Frances C. Davenport	Alumni	2012
Tim Sease	First	2012
Donna Glenn Tinsley	Second	2014
Jane L. LaRoche	Alumni	2010
Janet Smalley	Third	2010
Leland Cox	Fourth	2010
Sue Smith-Rex	At Large	2011
Kathy Bigham, Chair	Fifth	2012
Karl A. Folkens	Sixth	2014
Bob Thompson	At Large	2014
Dalton B. Floyd, Jr.	At Large	2015

APPOINTED MEMBERS

David E. Vipperman, Governor's Designee	Coterminous with Governor Sanford
Thomas E. Pope, Governor's Appointee	Coterminous with Governor Sanford
Samuel R. Foster, Sr., State Superintendent of Education's Designee	Coterminous with Superintendent

EX-OFFICIO MEMBERS

The Honorable Mark Sanford, Governor
 James Rex, State Superintendent of Education
 Anthony J. DiGiorgio, President

INVITED REPRESENTATIVES

Marsha Bollinger, Chair of Faculty Conference
 Sydney Evans, Chair of Council of Student Leaders

ACADEMIC DEPARTMENTS

COLLEGE OF ARTS AND SCIENCES

DEPARTMENT OF BIOLOGY
DEPARTMENT OF CHEMISTRY, PHYSICS AND GEOLOGY
DEPARTMENT OF ENGLISH
DEPARTMENT OF HISTORY
DEPARTMENT OF HUMAN NUTRITION
DEPARTMENT OF MASS COMMUNICATION
DEPARTMENT OF MATHEMATICS
DEPARTMENT OF MODERN LANGUAGES
DEPARTMENT OF PHILOSOPHY AND RELIGIOUS STUDIES
DEPARTMENT OF POLITICAL SCIENCE
DEPARTMENT OF PSYCHOLOGY
DEPARTMENT OF SOCIAL WORK
DEPARTMENT OF SOCIOLOGY AND ANTHROPOLOGY
DEPARTMENT OF SPEECH
STUDENT ACADEMIC SERVICES
SPECIAL PROGRAMS
 AFRICAN AMERICAN STUDIES
 ENVIRONMENTAL SCIENCES
 ENVIRONMENTAL STUDIES
 GERONTOLOGY
 LIBERAL ARTS
 WOMEN'S STUDIES
 INTERNATIONAL AREA STUDIES
 PEACE, JUSTICE, AND CONFLICT
 INTEGRATED MARKETING COMMUNICATION
 RESOLUTION STUDIES

COLLEGE OF BUSINESS ADMINISTRATION

DEPARTMENT OF ACCOUNTING, FINANCE AND ECONOMICS
DEPARTMENT OF COMPUTER SCIENCE AND QUANTITATIVE METHODS
DEPARTMENT OF MANAGEMENT AND MARKETING
STUDENT ACADEMIC SERVICES

RICHARD W. RILEY COLLEGE OF EDUCATION

CENTER FOR PEDAGOGY
DEPARTMENT OF CURRICULUM AND INSTRUCTION
DEPARTMENT OF HEALTH AND PHYSICAL EDUCATION
INSTRUCTIONAL TECHNOLOGY CENTER
STUDENT ACADEMIC SERVICES
MACFEAT LABORATORY SCHOOL
PARTNERSHIPS
 PARTNERSHIPS WITH LOCAL SCHOOLS
 NORTH CENTRAL MATHEMATICS AND SCIENCE REGIONAL CENTER
 SOUTH CAROLINA TEACHING FELLOWS
 CENTER FOR EDUCATOR RETENTION, RECRUITMENT AND ADVANCEMENT (CERRA)

UNIVERSITY COLLEGE

ACADEMY 101
HUMAN EXPERIENCE 102
HONORS PROGRAM
INTERNATIONAL CENTER
LEADERSHIP STUDIES
LEAP
ONCA (OFFICE OF NATIONALLY COMPETITIVE AWARDS)
TEACHING AND LEARNING CENTER
TOUCHSTONE PROGRAM
TRiO
UNDECLARED MAJORS

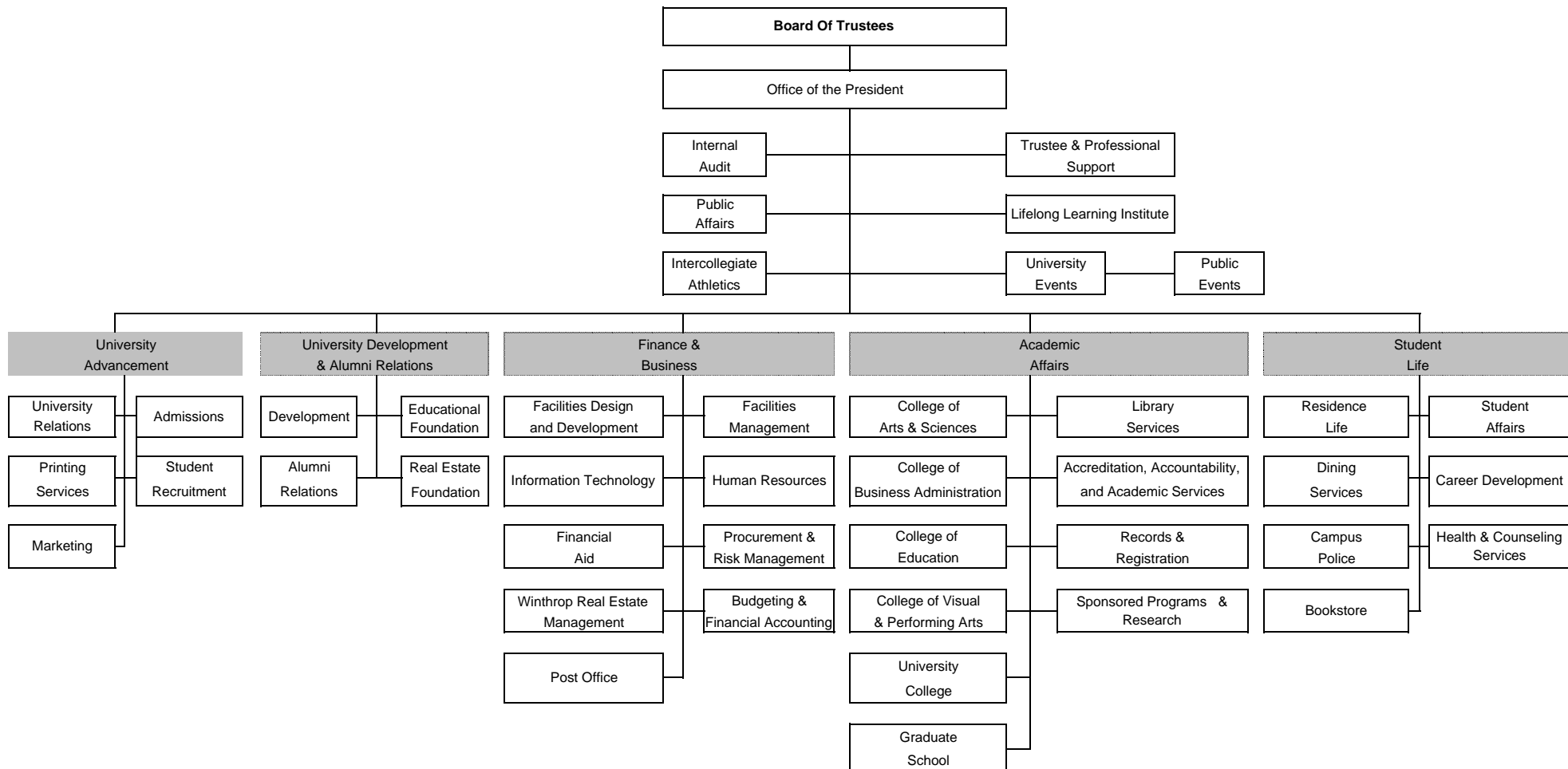
COLLEGE OF VISUAL AND PERFORMING ARTS

DEPARTMENT OF DESIGN
DEPARTMENT OF FINE ARTS
DEPARTMENT OF MUSIC
DEPARTMENT OF THEATRE AND DANCE
STUDENT ACADEMIC SERVICES
SPECIAL PROGRAMS
 ARTS IN BASIC CURRICULUM PROJECT
 OFFICE OF SPECIAL PROJECTS
 WINTHROP UNIVERSITY GALLERIES

DACUS LIBRARY

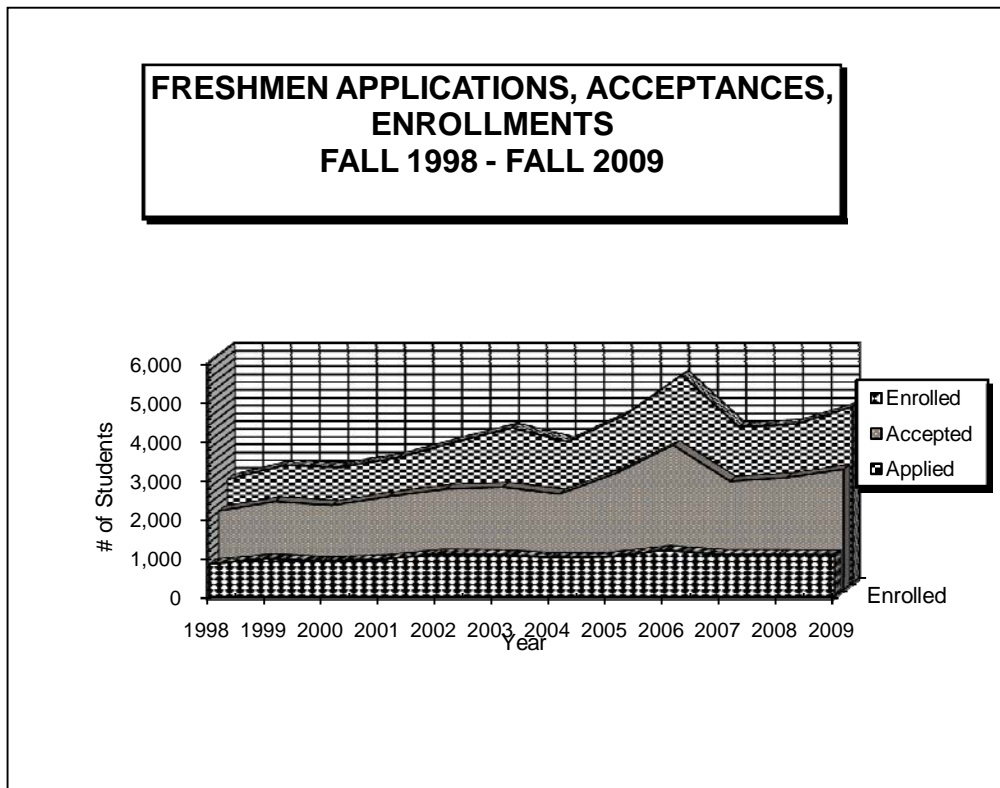
PUBLIC SERVICES DIVISION
 REFERENCE DEPARTMENT
 CIRCULATION DEPARTMENT
 ARCHIVES AND SPECIAL COLLECTIONS
TECHNICAL SERVICES DIVISION
 MONOGRAPHS ACQUISITIONS DEPARTMENT
 MONOGRAPHS CATALOGING DEPARTMENT
 SERIALS ACQUISITIONS AND CATALOGING DEPARTMENT
 CATALOGING/DATABASE MANAGEMENT

WINTHROP UNIVERSITY
ORGANIZATIONAL CHART 2009 - 2010



FRESHMEN APPLICATIONS, ACCEPTANCES, ENROLLMENTS FALL 1998 - FALL 2009

YEAR	1998	1999	2000	2001	2002	2003	2004	2005	2006	2007	2008	2009
Applications	2,651	3,014	2,969	3,207	3,604	3,972	3,617	4,303	5,328	3,996	4,065	4,511
Acceptances	2,019	2,261	2,163	2,389	2,579	2,632	2,452	2,985	3,704	2,781	2,872	3,087
Acceptances as % of Applied	76.2%	75.0%	72.9%	74.5%	71.6%	66.3%	67.8%	69.4%	69.5%	69.6%	70.7%	68.4%
Enrolled	836	971	907	946	1,086	1,074	1,001	1,017	1,183	1,074	1,075	1,060
Enrolled as % of Accepted	41.4%	42.9%	41.9%	39.6%	42.1%	40.8%	40.8%	34.1%	31.9%	38.6%	37.4%	34.3%



FIRST-TIME FRESHMEN CLASS PROFILE FALL 2009

GENDER	Winthrop	
	#	Percent
Male	325	30.7%
Female	735	69.3%
Total	1060	100.0%

SCHOOL BACKGROUND	Winthrop	
	#	Percent
S.C. High School	920	86.8%
Out-of-State H.S./GED	124	11.7%
Foreign H.S./GED	13	1.2%
S.C. GED	0	0.0%
Home School	3	0.3%
Unknown High School	0	0.0%
Total	1060	100.0%

RACE	Winthrop			
	Male	Female	Total	Percent
International	10	7	17	1.6%
Black (Non-Hispanic)	86	201	287	27.1%
Native American	0	4	4	0.4%
Asian / Pacific Islander	6	12	18	1.7%
Hispanic	6	12	18	1.7%
White (Non-Hispanic)	217	499	716	67.5%
Unknown			0	0.0%
Total	325	735	1060	100.0%

ENROLLMENT STATUS	Winthrop			
	Male	Female	Total	Percent
Full-Time	325	735	1060	100.0%
Part-Time	0	0	0	0.0%
Total	325	735	1060	100.0%

HIGH SCHOOL CLASS RANK	Winthrop		
	#	Percent	Cum. %
Top Tenth	221	22.4%	22.4%
Second Tenth	227	23.0%	45.5%
Third Tenth	191	19.4%	64.9%
Fourth Tenth	143	14.5%	79.4%
Fifth Tenth	100	10.2%	89.5%
Bottom 50%	103	10.5%	100.0%
Subtotal	985	100%	
Unknown/unranked	75	7.1%	
Total	1060		

RESIDENCY	Winthrop			
	Male	Female	Total	Percent
South Carolina Residents	277	660	937	88.4%
Non-S.C. Residents	48	75	123	11.6%
Total	325	735	1060	100.0%

UNIVERSITY HOUSING	Winthrop Freshmen			
	Male	Female	Total	Percent
University Residences	286	671	957	90.3%
Off Campus	39	64	103	9.7%
Total	325	735	1060	100.0%

AVERAGE ACT/SAT SCORE	#	Score
SAT		
SAT Math	734	530
SAT Verb	734	528
ACT	324	22.7
No Score	2	
Total	1060	

AVERAGE HIGH SCHOOL GPA	#	GPA
	1043	3.68

FIRST-TIME ENTERING FRESHMEN FALL 2001 - FALL 2009

	2001	2002	2003	2004	2005	2006	2007	2008	2009	08 to 09	
										% Diff	Diff
Total 1st-Time Freshmen	946	1086	1074	1001	1017	1183	1074	1075	1060	-1.4%	-15
Winthrop's Average SAT and ACT including provisionals, internationals, and age 22 & older											
COMBINED SAT	1055	1055	1069	1068	1080	1054	1053	1075	1058	-1.6%	-17
VERB	530	526	535	536	539	526	525	535	528	-1.3%	-7
MATH	525	529	534	532	540	528	528	540	530	-1.9%	-10
# students w/ SAT	756	838	819	809	772	878	772	753	734	-2.5%	-19
% 1st-Time Freshmen	79.9%	77.2%	76.3%	80.8%	75.9%	74.2%	71.9%	70.0%	69.2%	-1.1%	0
ACT	22	22	22	21	22	22	22	23	23	0.0%	0
# students w/ ACT	178	243	251	190	242	299	287	310	324	4.5%	14
% 1st-Time Freshmen	18.8%	22.4%	23.4%	19.0%	23.8%	25.3%	26.7%	28.8%	30.6%	6.0%	0
# with no SAT or ACT Score	12	5	4	2	3	6	15	12	2	-83.3%	-10
	1.3%	0.5%	0.4%	0.2%	0.3%	0.5%	1.4%	1.1%	0.2%	-83.1%	0

* The use of SAT or ACT scores for admission to Winthrop for all new freshmen is based on the highest score of the two tests.

**SOUTH CAROLINA HIGH SCHOOLS
WHICH CONTRIBUTED TEN OR MORE STUDENTS
TO WINTHROP'S FRESHMAN CLASS IN ONE YEAR
FALL 2005 - FALL 2009**

COUNTY	S.C. High School of Graduation	Enrolled Fall 05	Enrolled Fall 06	Enrolled Fall 07	Enrolled Fall 08	Enrolled Fall 09
Anderson	T.L. Hanna High School	1	11	6	8	1
Anderson	Wren High School	7	8	13	8	11
Beaufort	Beaufort High School	7	11	5	6	8
Beaufort	Hilton Head High School	10	8	9	7	10
Berkeley	Stratford High School	15	9	13	7	10
Charleston	Bishop England High School	5	10	5	8	5
Charleston	Charleston County Schl Of Arts	11	10	3	7	7
Charleston	James Island High School	1	10	8	12	9
Charleston	Wando High School	22	22	24	13	18
Charleston	West Ashley High School	13	10	14	7	7
Cherokee	Gaffney Senior High School	3	18	6	8	6
Dorchester	Fort Dorchester High School	10	13	16	6	6
Dorchester	Summerville High School	15	22	17	18	20
Foreign	Foreign High School / GED	14	4	16	17	13
Georgetown	Waccamaw High School	3	2	5	10	2
Greenville	Eastside High School	11	12	12	6	7
Greenville	Hillcrest High School-Simpson.	5	6	5	10	13
Greenville	James L. Mann High School	1	10	7	3	6
Greenville	Mauldin High School	4	17	20	13	15
Greenville	Riverside High School	5	6	17	7	15
Greenwood	Greenwood High School	7	8	3	10	2
Horry	Socastee High School	7	13	4	10	4
Kershaw	Lugoff-Elgin High School	11	15	8	6	5
Lancaster	Lancaster High School	14	5	4	2	7
Laurens	Laurens School District 55 HS	7	6	8	10	7
Lexington	Chapin High School	6	10	19	12	4
Lexington	Dutch Fork High School	12	19	11	17	15
Lexington	Irmo High School	14	14	11	11	12
Lexington	Lexington High School	8	18	19	19	19
Lexington	White Knoll High School	11	10	2	7	9
Orangeburg	Orangeburg-Wilkinson High Sch	1	12	4	1	4
Pickens	Easley High School	6	4	4	6	11
Richland	A.C. Flora High School	4	10	8	3	6
Richland	Blythewood High School		3	4	14	14
Richland	Dreher High School	2	6	6	6	11
Richland	Richland Northeast High School	9	16	8	6	7
Richland	Ridge View High School	16	12	13	12	19
Richland	Spring Valley High School	15	14	29	25	14
Spartanburg	Paul M. Dorman High School	8	12	9	12	4
Spartanburg	Spartanburg High School	4	6	4	13	14
Sumter	Crestwood High School	3	13	3	6	5
Sumter	Sumter High School	14	13	20	7	11
York	Clover High School	25	28	21	29	16
York	Fort Mill High School	34	32	39	36	20
York	Nation Ford High School					18
York	Northwestern High School	38	28	36	24	18
York	Rock Hill High School	33	32	23	18	24
York	South Pointe High School				15	9
York	York Comprehensive High School	12	15	27	21	18

FIRST-TIME FRESHMEN ENROLLMENT BY MAJOR FALL 2005 - FALL 2009

COLLEGE / DEGREE PROGRAMS	2005	2006	2007	2008	2009	% OF 5 YEAR TOTAL	08 TO 09 % DIFF.	05 TO 09 % DIFF.
ARTS & SCIENCES	360	452	379	458	432	38.6%	-5.7%	20.0%
Biology	94	95	84	103	106	8.9%	2.9%	12.8%
Chemistry	25	33	31	48	34	3.2%	-29.2%	36.0%
English	30	45	33	52	40	3.7%	-23.1%	33.3%
Environmental Science	1	1	2	6	10	0.4%	66.7%	900.0%
Environmental Studies	2	2	4	1	1	0.2%	0.0%	-50.0%
General Communication Disorders	6	12	11	7	9	0.8%	28.6%	50.0%
History	24	33	24	27	14	2.3%	-48.1%	-41.7%
Human Nutrition	8	11	14	16	19	1.3%	18.8%	137.5%
Integrated Marketing Communication	11	19	13	19	14	1.4%	-26.3%	27.3%
Mass Communication	37	48	43	42	31	3.7%	-26.2%	-16.2%
Mathematics (B.A.)	18	8	4	10	21	1.1%	110.0%	16.7%
Mathematics (B.S.)	0	11	12	8	10	0.8%	25.0%	100.0%
Modern Languages	4	11	12	1	12	0.7%	1100.0%	200.0%
Philosophy & Religious Studies	4	3	1	3	1	0.2%	-66.7%	-75.0%
Political Science	27	28	33	34	16	2.6%	-52.9%	-40.7%
Psychology	57	55	39	58	69	5.2%	19.0%	21.1%
Science Communications	0	0	0	1	1	0.0%	0.0%	100.0%
Social Work	2	12	11	9	11	0.8%	22.2%	450.0%
Sociology	10	25	8	13	13	1.3%	0.0%	30.0%
BUSINESS ADMINISTRATION	184	248	263	222	192	20.5%	-13.5%	4.3%
Business Administration	133	180	190	138	120	14.1%	-13.0%	-9.8%
Computer Science	15	23	20	17	15	1.7%	-11.8%	0.0%
Information Design *			8	13	12	N/A	-7.7%	N/A
Integrated Marketing Communication	11	19	13	19	14	1.4%	-26.3%	27.3%
Economics		1	3	4	0	N/A	-100.0%	N/A
Sport Management	25	25	29	31	31	2.6%	0.0%	24.0%
EDUCATION	184	238	209	179	242	19.5%	35.2%	31.5%
Early Childhood Education	61	70	80	43	70	6.0%	62.8%	14.8%
Elementary Education	62	70	46	31	42	4.7%	35.5%	-32.3%
Middle Level Education		18	11	12	14	N/A	16.7%	N/A
Family & Consumer Science (HEED)	1	2	2	2	0	0.1%	-100.0%	-100.0%
Physical Education	29	38	28	11	16	2.3%	45.5%	-44.8%
Special Education	6	15	13	15	23	1.3%	53.3%	283.3%
Sport Management	25	25	29	31	31	2.6%	0.0%	24.0%
Exercise Science***				10	25	N/A	150.0%	N/A
Athletic Training****				24	21	N/A	-12.5%	N/A
VISUAL & PERFORMING ARTS	198	184	179	183	178	17.1%	-2.7%	-10.1%
Art (B.A.)	103	22	21	15	11	3.2%	-26.7%	-89.3%
Art (B.F.A.)	0	66	92	85	80	6.0%	-5.9%	100.0%
Art History (B.A.)	1	4	4	4	3	0.3%	-25.0%	200.0%
Dance	16	18	7	17	14	1.3%	-17.6%	-12.5%
Music (B.A.)	13	12	2	8	8	0.8%	0.0%	-38.5%
Music Education (Choral)	12	19	7	7	13	1.1%	85.7%	8.3%
Music Education (Instrumental)	18	20	19	21	22	1.9%	4.8%	22.2%
Music (Performance)	13	7	8	6	2	0.7%	-66.7%	-84.6%
Theatre	22	16	19	20	25	1.9%	25.0%	13.6%
PRE-MAJOR	122	105	86	83	61	8.5%	-26.5%	-50.0%
INTERDISCIPLINARY MAJORS	36	25	42	50	45	3.7%	-10.0%	25.0%
Integrated Marketing Communication	11	0	13	19	14	1.1%	-26.3%	27.3%
Sport Management	25	25	29	31	31	2.6%	0.0%	24.0%

* New program began 2007 Fall

** Discontinued program

*** New Program began 2008 Spring

**** New Program began 2008 Fall

SOURCE: INSTITUTIONAL RESEARCH 2-7

**HEADCOUNT ENROLLMENT OF TRANSFERS
BY S.C. INSTITUTION OF PREVIOUS ENROLLMENT
FALL 2005 - FALL 2009**

FICE	TECHNICAL COLLEGES	Enrolled Fall 05	Enrolled Fall 06	Enrolled Fall 07	Enrolled Fall 08	Enrolled Fall 09	5 Year % of Total
3996	York	94	64	76	79	88	55.7%
3993	Midlands	16	24	16	15	17	12.6%
3991	Greenville	10	4	7	16	9	6.6%
4920	Trident - Palmer	15	15	5	14	14	8.7%
3992	Piedmont	2	1	0	2	2	0.9%
4926	Tri-County	2	3	9	6	3	3.6%
7602	Chesterfield-Marlboro	2	6	0	0	1	1.4%
3994	Spartanburg	7	5	5	2	0	3.4%
4925	Horry-Georgetown	3	4	2	4	4	2.3%
3995	Central Carolina	1	4	2	1	0	1.4%
3990	Florence-Darlington	3	1	2	2	2	1.4%
6815	Orangeburg-Calhoun	2	2	1	0	1	0.9%
9910	Tech. College of Low Country	0	0	0	1	1	0.2%
10056	Aiken	0	2	1	0	0	0.5%
9932	Williamsburg	0	0	0	0	1	0.0%
4922	South University	0	1	0	0	0	0.2%
5363	Denmark	0	0	1	0	1	0.2%
4923	Clinton Junior College	0	0	0	0	1	0.0%
	Subtotal	157	136	127	142	145	100.0%

FICE	PUBLIC SR COLLEGE & UNIV	Enrolled Fall 05	Enrolled Fall 06	Enrolled Fall 07	Enrolled Fall 08	Enrolled Fall 09	5 Year % of Total
3453	USC-Lancaster	10	14	14	16	19	9.6%
3448	USC-Columbia	13	9	6	7	7	6.2%
3428	College of Charleston	7	8	5	4	5	4.3%
3435	Lander	3	3	4	2	3	2.1%
3451	Coastal Carolina	7	3	3	5	1	3.2%
9226	Francis Marion	6	4	5	5	2	3.6%
3425	Clemson	6	3	0	4	5	2.3%
6951	USC-Upstate	9	3	0	3	5	2.7%
3446	S.C. State	6	5	3	1	6	2.7%
12112	USC-Sumter	4	2	1	3	2	1.8%
3449	USC-Aiken	2	0	1	0	0	0.5%
4927	USC-Union	1	1	1	0	3	0.5%
3454	USC-Salkehatchie	1	0	0	1	0	0.4%
3450	USC-Beaufort	1	6	1	0	1	1.4%
3423	The Citadel	0	0	0	0	0	0.0%
3438	Medical University of S.C.	0	0	0	0	0	0.0%
	Subtotal	76	61	44	51	59	100.0%

**HEADCOUNT ENROLLMENT OF TRANSFERS
BY S.C. INSTITUTION OF PREVIOUS ENROLLMENT
FALL 2005 - FALL 2009**

FICE	PRIVATE SR COLLEGES & UNIV	Enrolled Fall 05	Enrolled Fall 06	Enrolled Fall 07	Enrolled Fall 08	Enrolled Fall 09	5 Year % of Total
3447	Spartanburg Methodist	9	8	10	13	7	7.1%
3419	Charleston Southern (Baptist)	3	1	3	2	4	1.6%
3441	North Greenville	1	2	0	1	1	0.7%
3430	Columbia	1	4	3	1	2	1.6%
3440	Newberry	0	2	5	4	2	2.0%
3427	Coker	1	1	2	2	2	1.1%
3420	Benedict	1	1	2	3	2	1.2%
3424	Clafin	4	5	1	3	1	2.3%
3418	Anderson	3	1	1	1	0	1.1%
3436	Limestone	3	1	0	3	2	1.2%
0439	Morris	0	0	1	2	1	0.5%
3434	Furman	0	1	1	0	0	0.4%
3457	Wofford	0	1	0	0	0	0.2%
3432	Erskine	1	3	2	0	1	1.1%
3431	Converse	0	1	0	2	0	0.5%
3445	Presbyterian	0	0	0	3	0	0.5%
3455	Voorhees	0	0	0	0	2	0.0%
3417	Allen	2	1	0	0	0	0.5%
903404	Johnson and Wales	1	0	0	0	0	0.2%
3422	Central Wesleyan	1	0	0	0	0	0.2%
3429	Columbia International University	1	0	1	0	0	0.4%
3421	Bob Jones	0	0	0	2	0	0.4%
	Subtotal	32	33	32	42	27	100.0%

SUMMARY	Enrolled Fall 05	Enrolled Fall 06	Enrolled Fall 07	Enrolled Fall 08	Enrolled Fall 09	5 Year % of Total
Technical Colleges	157	136	127	142	145	47.6%
Public Sr Colleges & Univ.	76	61	44	51	59	22.3%
Private Sr Colleges & Univ.	32	33	32	42	27	10.6%
Out-of-State	94	77	84	93	83	27.8%
Total	308	307	287	328	314	100.0%

**HEADCOUNT ENROLLMENT
OF FIRST-YEAR GRADUATE STUDENTS AT WINTHROP
BY S.C. INSTITUTIONS OF PREVIOUS ENROLLMENT
Fall 2005- Fall 2009**

FICE	PUBLIC SR COLLEGE & UNIV	Enrolled Fall 05	Enrolled Fall 06	Enrolled Fall 07	Enrolled Fall 08	Enrolled Fall 09	5 Year % SC Public	5 Year % of Total
003425	Clemson	42	11	7	12	20	11.1%	5.5%
003451	Coastal Carolina	4	0	2	4	4	1.7%	0.8%
003428	College of Charleston	9	5	0	3	3	2.4%	1.2%
009226	Francis Marion	10	4	0	7	3	2.9%	1.4%
003435	Lander	56	2	1	2	2	7.6%	3.8%
003438	Medical University of S.C.	0	0	0	0	0	0.0%	0.0%
003446	S.C. State	9	8	3	4	8	3.9%	1.9%
003423	The Citadel	4	1	0	1	2	1.0%	0.5%
003449	USC-Aiken	12	0	1	0	0	1.6%	0.8%
003448	USC-Columbia	56	21	14	23	31	17.5%	8.7%
003453	USC-Lancaster	1	1	0	0	0	0.2%	0.1%
006951	USC-Upstate	3	2	2	3	4	1.7%	0.8%
003456	Winthrop	49	90	87	78	98	48.5%	24.0%
	Subtotal	255	145	117	137	175	100.0%	49.5%

FICE	PRIVATE SR COLLEGE & UNIV	Enrolled Fall 05	Enrolled Fall 06	Enrolled Fall 07	Enrolled Fall 08	Enrolled Fall 09	5 Year % SC Private	5 Year % of Total
003418	Anderson College	10	2	1	0	0	8.1%	0.8%
003420	Benedict	1	2	1	0	0	2.5%	0.2%
003421	Bob Jones	0	0	0	0	0	0.0%	0.0%
003419	Charleston Southern	4	1	0	0	5	6.2%	0.6%
003424	Clafin	4	0	0	1	2	4.3%	0.4%
003427	Coker	13	4	4	2	5	17.4%	1.7%
003429	Columbia International University	3	0	0	1	0	2.5%	0.0%
003430	Columbia	11	0	0	0	2	8.1%	0.8%
003431	Converse	6	1	1	1	0	5.6%	0.5%
003432	Erskine	8	1	1	1	4	9.3%	0.9%
003434	Furman	0	1	4	3	1	5.6%	0.5%
003436	Limestone	0	2	2	3	2	5.6%	0.5%
003439	Morris	0	2	0	0	1	1.9%	0.2%
003440	Newberry	0	3	1	7	0	6.8%	0.7%
003441	North Greenville	0	0	1	0	1	1.2%	0.1%
003445	Presbyterian	0	1	4	4	3	7.5%	0.7%
003422	Southern Wesleyan	4	0	0	0	0	2.5%	0.2%
003455	Vorhees	0	0	0	1	1	1.2%	0.1%
003457	Wofford	0	1	0	2	3	3.7%	0.4%
	Subtotal	64	21	20	26	30	100.0%	9.4%

SUMMARY

SUMMARY	Enrolled Fall 05	Enrolled Fall 06	Enrolled Fall 07	Enrolled Fall 08	Enrolled Fall 09	5 Year % of Total
Public Senior Colleges & Univ.	255	145	117	137	175	49.5%
Private Senior Colleges & Univ.	64	21	20	26	30	9.6%
Out-of-State	94	139	117	161	162	40.2%
Unknown	0	4	3	4	5	
Total	413	305	257	328	372	99.3%

NOTE: Only students classified as fully-admitted, degree-seeking students are counted.

**HEADCOUNT ENROLLMENT
BY GENDER, LEVEL & FULL/PART TIME
FALL 2009**

LEVEL	2009		
	Male	Female	Total
Full-Time Undergraduate	1,435	3,038	4,473
Part-Time Undergraduate	182	442	624
Subtotal	1,617	3,480	5,097
Full-Time Graduate	146	318	464
Part-Time Graduate	172	508	680
Subtotal	318	826	1,144
Grand Total	1,935	4,306	6,241

**HEADCOUNT ENROLLMENT
BY GENDER & LEVEL
FALL 2005 - FALL 2009**

LEVEL	2005		2006		2007		2008		2009	
	Male	Female	Male	Female	Male	Female	Male	Female	Male	Female
Undergraduate	1,598	3,589	1,571	3,540	1,562	3,450	1,594	3,474	1,617	3,480
Graduate	353	940	348	833	376	994	310	871	318	826
Total	1,951	4,529	1,919	4,373	1,938	4,444	1,904	4,345	1,935	4,306
Percent	30.1%	69.9%	30.5%	69.5%	30.4%	69.6%	30.5%	69.5%	31.0%	69.0%

HEADCOUNT ENROLLMENT BY GENDER, CLASS, ETHNICITY & FULL/PART TIME FALL 2009

CLASS/ETHNICITY	FULL-TIME				PART-TIME				TOTAL CLASS	
	FEMALE		MALE		FEMALE		MALE		N	%
	N	%	N	%	N	%	N	%		
FRESHMAN	778	100%	365	100%	11	100%	4	100%	1,158	100%
International	9	1.2%	17	4.7%	0	0.0%	0	0.0%	26	2.2%
Black(Non-Hispanic)	222	28.5%	94	25.8%	8	72.7%	2	50.0%	326	28.2%
Native American	4	0.5%	0	0.0%	0	0.0%	0	0.0%	4	0.3%
Asian	13	1.7%	6	1.6%	0	0.0%	0	0.0%	19	1.6%
Hispanic	12	1.5%	6	1.6%	0	0.0%	0	0.0%	18	1.6%
White(Non-Hispanic)	518	66.6%	242	66.3%	3	27.3%	2	50.0%	765	66.1%
Unknown		0.0%		0.0%		0.0%		0.0%	0	0.0%
SOPHOMORE	680	100%	361	100%	43	100%	16	100%	1,100	100%
International	12	1.8%	16	4.4%	0	0.0%	0	0.0%	28	2.5%
Black(Non-Hispanic)	194	28.5%	89	24.7%	21	48.8%	4	25.0%	308	28.0%
Native American	4	0.6%	1	0.3%	0	0.0%	0	0.0%	5	0.5%
Asian	9	1.3%	4	1.1%	0	0.0%	0	0.0%	13	1.2%
Hispanic	14	2.1%	8	2.2%	1	2.3%	0	0.0%	23	2.1%
White(Non-Hispanic)	447	65.7%	243	67.3%	21	48.8%	12	75.0%	723	65.7%
Unknown		0.0%		0.0%		0.0%		0.0%	0	0.0%
JUNIOR	734	100%	358	100%	49	100%	16	100%	1,157	100%
International	5	0.7%	6	1.7%	0	0.0%	0	0.0%	11	1.0%
Black(Non-Hispanic)	204	27.8%	87	24.3%	20	40.8%	3	18.8%	314	27.1%
Native American	2	0.3%	2	0.6%	1	2.0%	0	0.0%	5	0.4%
Asian	13	1.8%	4	1.1%	1	2.0%	0	0.0%	18	1.6%
Hispanic	21	2.9%	10	2.8%	1	2.0%	1	6.3%	33	2.9%
White(Non-Hispanic)	489	66.6%	249	69.6%	26	53.1%	12	75.0%	776	67.1%
Unknown		0.0%		0.0%		0.0%		0.0%	0	0.0%
SENIOR	837	100%	344	100%	107	100%	67	100%	1,355	100%
International	22	2.6%	14	4.1%	0	0.0%	2	3.0%	38	2.8%
Black(Non-Hispanic)	233	27.8%	77	22.4%	31	29.0%	10	14.9%	351	25.9%
Native American	3	0.4%	3	0.9%	1	0.9%	1	1.5%	8	0.6%
Asian	19	2.3%	3	0.9%	1	0.9%	4	6.0%	27	2.0%
Hispanic	18	2.2%	7	2.0%	3	2.8%	0	0.0%	28	2.1%
White(Non-Hispanic)	542	64.8%	240	69.8%	71	66.4%	50	74.6%	903	66.6%
UNDERGRADUATE SPECIAL	9	100%	7	100%	232	100%	79	100%	327	100%
International	6	66.7%	4	57.1%	0	0.0%	1	1.3%	11	3.4%
Black(Non-Hispanic)	1	11.1%	0	0.0%	51	22.0%	23	29.1%	75	22.9%
Native American	0	0.0%	0	0.0%	2	0.9%	0	0.0%	2	0.6%
Asian	0	0.0%	0	0.0%	6	2.6%	3	3.8%	9	2.8%
Hispanic	0	0.0%	0	0.0%	6	2.6%	1	1.3%	7	2.1%
White(Non-Hispanic)	2	22.2%	3	43%	167	72.0%	51	64.6%	223	68.2%
Unknown		0.0%		0.0%		0.0%		0.0%	0	0.0%
GRADUATE	318	100%	143	100%	260	100%	123	100%	844	100%
International	12	3.8%	18	12.6%	1	0.4%	0	0.0%	31	3.7%
Black(Non-Hispanic)	88	27.7%	19	13.3%	48	18.5%	27	22.0%	182	21.6%
Native American	1	0.3%	0	0.0%	0	0.0%	0	0.0%	1	0.1%
Asian	0	0.0%	2	1.4%	5	1.9%	1	0.8%	8	0.9%
Hispanic	1	0.3%	2	1.4%	2	0.8%	0	0.0%	5	0.6%
White(Non-Hispanic)	216	67.9%	102	71%	204	78.5%	95	77.2%	617	73.1%
Unknown		0.0%		0.0%		0.0%		0.0%	0	0.0%
GRADUATE SPECIAL	0	#DIV/0!	3	100%	248	100%	49	100%	300	100%
International	0	#DIV/0!	2	66.7%	1	0.4%	1	2.0%	4	1.3%
Black(Non-Hispanic)	0	#DIV/0!	0	0.0%	25	10.1%	8	16.3%	33	11.0%
Native American	0	#DIV/0!	0	0.0%	1	0.4%	0	0.0%	1	0.3%
Asian	0	#DIV/0!	0	0.0%	0	0.0%	0	0.0%	0	0.0%
Hispanic	0	#DIV/0!	0	0.0%	2	0.8%	0	0.0%	2	0.7%
White(Non-Hispanic)	0	#DIV/0!	1	33%	219	88.3%	40	81.6%	260	86.7%
Unknown		#DIV/0!		0%		0.0%		0.0%	0	0.0%
GRAND TOTAL	3,356	54%	1,581	25.3%	950	15.2%	354	5.7%	6,241	100%

**HEADCOUNT ENROLLMENT
BY ETHNIC CATEGORY & FULL/PART TIME
FALL 2009**

ETHNIC CATEGORY	FULL-TIME		PART-TIME		TOTAL	
	N	%	N	%	N	%
Undergraduate	4,473	100%	624	100%	5,097	100%
White, non-Hispanic	2,975	66.5%	415	66.5%	3,390	66.5%
Black, non-Hispanic	1,201	26.8%	173	27.7%	1,374	27.0%
International	111	2.5%	3	0.5%	114	2.2%
American Indian	19	0.4%	5	0.8%	24	0.5%
Asian/Pacific Islander	71	1.6%	15	2.4%	86	1.7%
Hispanic	96	2.1%	13	2.1%	109	2.1%
Unknown		0.0%		0.0%	0	0.0%
Graduate	464	100%	680	100%	1,144	100%
White, non-Hispanic	319	68.8%	558	82.1%	877	76.7%
Black, non-Hispanic	107	23.1%	108	15.9%	215	18.8%
International	32	6.9%	3	0.4%	35	3.1%
American Indian	1	0.2%	1	0.1%	2	0.2%
Asian/Pacific Islander	2	0.4%	6	0.9%	8	0.7%
Hispanic	3	0.6%	4	0.6%	7	0.6%
Unknown		0.0%		0.0%	0	0.0%
Total Students	4,937	100%	1,304	100%	6,241	100%
White, non-Hispanic	3,294	66.7%	973	74.6%	4,267	68.4%
Black, non-Hispanic	1,308	26.5%	281	21.5%	1,589	25.5%
International	143	2.9%	6	0.5%	149	2.4%
American Indian	20	0.4%	6	0.5%	26	0.4%
Asian/Pacific Islander	73	1.5%	21	1.6%	94	1.5%
Hispanic	99	2.0%	17	1.3%	116	1.9%
Unknown	0	0.0%	0	0.0%	0	0.0%

**HEADCOUNT ENROLLMENT
FALL 2005 - FALL 2009**

ETHNIC CATEGORY	2005		2006		2007		2008		2009	
	N	%	N	%	N	%	N	%	N	%
Total Students	6,480	100%	6,292	100%	6,382	100%	6,249	100%	6,241	100%
White, non-Hispanic	4,495	69.4%	4,335	68.9%	4,413	69.1%	4,285	68.6%	4,267	68.4%
Black, non-Hispanic	1,638	25.3%	1,615	25.7%	1,603	25.1%	1,550	24.8%	1,589	25.5%
International	158	2.4%	138	2.2%	133	2.1%	167	2.7%	149	2.4%
American Indian	27	0.4%	27	0.4%	24	0.4%	27	0.4%	26	0.4%
Asian/Pacific Islander	83	1.3%	85	1.4%	96	1.5%	97	1.6%	94	1.5%
Hispanic	79	1.2%	92	1.5%	113	1.8%	123	2.0%	116	1.9%
Unknown	0	0.0%	0	0.0%	0	0.0%	0	0.0%	0	0.0%

**AVERAGE WINTHROP STUDENT AGE
2000 - 2009**

LEVEL	2000	2001	2002	2003	2004	2005	2006	2007	2008	2009
Undergraduate	21.6	21.6	21.6	21.4	21.5	21.5	21.3	21.2	21.3	21.4
Graduate	34.3	34.4	34.5	34.4	33.0	33.0	33.0	32.5	32.9	32.6

**UNDERGRADUATE HEADCOUNT ENROLLMENT
BY AGE OF STUDENTS
FALL 2009**

Age	Winthrop		Winthrop	Winthrop		Winthrop
	FT #	FT %	Cum FT %	PT #	PT %	Cum PT %
under 18	15	0.3%	0.3%	203	32.5%	32.5%
18 - 19	1,660	37.1%	37.4%	77	12.3%	44.9%
20 - 21	1,748	39.1%	76.5%	19	3.0%	47.9%
22 - 24	754	16.9%	93.4%	109	17.5%	65.4%
25 - 29	166	3.7%	97.1%	67	10.7%	76.1%
30 - 34	40	0.9%	98.0%	40	6.4%	82.5%
35 - 39	48	1.1%	99.1%	40	6.4%	88.9%
40 - 49	31	0.7%	99.8%	44	7.1%	96.0%
50 - 64	10	0.2%	100.0%	18	2.9%	98.9%
65 and older	1	0.0%	100.0%	7	1.1%	100.0%
Unknown		0.0%	100.0%		0.0%	100.0%
Total	4,473	100.0%	100.0%	624	100.0%	100.0%

Note: State percentiles are for all S.C. Public Senior Institutions.

**UNDERGRADUATE STUDENTS AGE 25 AND OLDER
FALL 2000-2009**

	2000	2001	2002	2003	2004	2005	2006	2007	2008	2009
Number	547	548	555	530	558	521	491	447	496	512
Percent	11.73%	11.33%	10.98%	10.27%	10.81%	10.09%	9.51%	8.92%	9.79%	10.05%

**GRADUATE HEADCOUNT ENROLLMENT
BY AGE OF STUDENTS
FALL 2009**

Age	Winthrop		Winthrop	Winthrop		Winthrop
	FT #	FT %	Cum FT %	PT #	PT %	Cum PT %
under 18	0	0.0%	0.0%	0	0.0%	0.0%
18 - 19	0	0.0%	0.0%	0	0.0%	0.0%
20 - 21	4	0.9%	0.9%	1	0.1%	0.1%
22 - 24	176	37.9%	38.8%	96	14.1%	14.3%
25 - 29	152	32.8%	71.6%	189	27.8%	42.1%
30 - 34	54	11.6%	83.2%	107	15.7%	57.8%
35 - 39	31	6.7%	89.9%	87	12.8%	70.6%
40 - 49	36	7.8%	97.6%	104	15.3%	85.9%
50 - 64	11	2.4%	100.0%	80	11.8%	97.6%
65 and older	0	0.0%	100.0%	16	2.4%	100.0%
Unknown		0.0%	100.0%		0.0%	100.0%
Total	464	100.0%	100.0%	680	100.0%	100.0%

Note: State percentiles are for all S.C. Public Senior Institutions.

HEADCOUNT ENROLLMENT BY CLASS & SEMESTER

FALL

LEVEL / CLASS	2005	2006	2007	2008	2009
Undergraduate	5,187	5,111	5,012	5,068	5,097
New Freshmen	1,019	1,183	1,074	1,075	1,060
Other Freshman	118	119	112	120	98
Sophomore	1,107	1,115	1,176	1,147	1,100
Junior	1,227	1,070	1,116	1,131	1,157
Senior	1,422	1,400	1,279	1,328	1,355
UG Special	294	224	255	267	327
Graduate	1,293	1,181	1,370	1,181	1,144
Total	6,480	6,292	6,382	6,249	6,241

SPRING

LEVEL / CLASS	2004	2005	2006	2007	2008
Undergraduate	4,861	4,811	4,704	4,778	4,687
Freshman	1,005	915	901	1,064	993
Sophomore	1,060	1,066	973	997	1,048
Junior	1,141	1,177	1,166	1,045	1,046
Senior	1,422	1,407	1,453	1,449	1,366
UG Special	233	246	211	223	234
Graduate	929	996	891	807	1,007
Total	5,790	5,807	5,595	5,585	5,694

SUMMER

LEVEL / CLASS	2004	2005	2006	2007	2008
Undergraduate	1,237	1,091	1,051	1,088	1,192
Freshman	40	25	28	41	39
Sophomore	185	183	126	150	206
Junior	341	268	290	318	329
Senior	605	568	570	534	563
UG Special	66	47	37	45	55
Graduate	1,093	864	955	750	868
Total	2,330	1,955	2,006	1,838	2,060

**FULL-TIME/PART-TIME HEADCOUNT
ENROLLMENT AND CREDIT HOUR PRODUCTION
FALL 2000 - FALL 2009**

LEVEL	2000		2001		2002		2003		2004	
	HC	CHP	HC	CHP	HC	CHP	HC	CHP	HC	CHP
Undergraduate	4,650	64,354	4,838	67,034	5,056	71,006	5,161	73,086	5,213	73,807
Full-Time	4,032	61,159	4,201	63,831	4,448	67,722	4,597	70,120	4,617	70,650
Part-Time	618	3,195	637	3,203	608	3,284	564	2,966	596	3,157
Graduate	1,412	7,644	1,468	6,915	1,406	6,891	1,397	7,207	1,234	6,701
Full-Time	289	2,978	270	2,783	303	3,003	328	3,309	327	3,267
Part-Time	1,123	4,666	1,198	4,132	1,103	3,888	1,069	3,898	907	3,434

LEVEL	2005		2006		2007		2008		2009	
	HC	CHP	HC	CHP	HC	CHP	HC	CHP	HC	CHP
Undergraduate	5,187	73,547	5,101	67,220	4,802	71,211	5,068	71,572	5,097	71,197
Full-Time	4,587	70,507	4,622	64,192	4,461	68,408	4,490	68,514	4,473	68,047
Part-Time	600	3,040	479	3,028	341	2,803	578	3,058	624	3,150
Graduate	1,293	6,793	1,131	3,229	780	7,792	1,181	7,421	1,144	7,792
Full-Time	328	3,268	312	2,067	393	4,132	404	4,218	464	4,855
Part-Time	965	3,525	819	1,162	387	3,660	777	3,203	680	2,937

Note: Headcount and CHP by classification of student.

**RESIDENCE HALL ENROLLMENT
COMPARED TO HEADCOUNT ENROLLMENT
BY CLASS
FALL 2009**

CLASS LEVEL	MALE RESIDENTS	FEMALE RESIDENTS	TOTAL RESIDENTS	HEADCOUNT ENROLLMENT	% RESIDENTS/ HEADCOUNT
Undergraduates	663	1,586	2,249	5,097	44.1%
New Freshmen	282	657	939	1,060	88.6%
Other Freshmen	27	35	62	98	63.3%
Sophomore	193	478	671	1,100	61.0%
Junior	102	252	354	1,157	30.6%
Senior	56	158	214	1,355	15.8%
Specials	3	6	9	327	2.8%
Graduates	4	6	10	1,144	0.9%
Grand Total	667	1,592	2,259	6,241	36.2%

FALL 2008

CLASS LEVEL	MALE RESIDENTS	FEMALE RESIDENTS	TOTAL RESIDENTS	HEADCOUNT ENROLLMENT	% RESIDENTS/ HEADCOUNT
Undergraduates	675	1,614	2,289	5,068	45.2%
New Freshmen	260	683	943	1,075	87.7%
Other Freshmen	41	32	73	120	60.8%
Sophomore	224	511	735	1,147	64.1%
Junior	84	222	306	1,131	27.1%
Senior	63	161	224	1,328	16.9%
Specials	3	5	8	267	3.0%
Graduates	4	9	13	1,181	1.1%
Grand Total	679	1,623	2,302	6,249	36.8%

**UNDERGRADUATE
RESIDENCE/NON-RESIDENCE HALL ENROLLMENT
FALL 1999 - FALL 2009**

RESIDENCY	1999	2000	2001	2002	2003	2004	2005	2006	2007	2008	2009
Residence Hall	2,159	2,152	2,236	2,303	2,466	2,229	2,137	2,257	2,337	2,289	2,249
% of Total	46.8%	46.3%	46.2%	45.5%	47.8%	42.8%	41.2%	44.2%	46.6%	45.2%	44.1%
Non-Residence Hall	2,452	2,498	2,602	2,753	2,695	2,984	3,050	2,854	2,675	2,779	2,848
% of Total	53.2%	53.7%	53.8%	54.5%	52.2%	57.2%	58.8%	55.8%	53.4%	54.8%	55.9%
Total UG Enrollment	4,611	4,650	4,838	5,056	5,161	5,213	5,187	5,111	5,012	5,068	5,097

**HEADCOUNT ENROLLMENT
BY STATE OF ORIGIN
FALL 2005 - FALL 2009**

YEAR	S.C. RESIDENTS						OUT-OF-STATE RESIDENTS						TOTAL STUDENTS					
	UG		GRAD		TOTAL		UG		GRAD		TOTAL		UG		GRAD		TOTAL	
	#	%	#	%	#	%	#	%	#	%	#	%	#	%	#	%	#	%
2005	4,483	82.1%	980	17.9%	5,463	84.3%	704	69.2%	313	30.8%	1,017	15.7%	5,187	80.0%	1,293	20.0%	6,480	100%
2006	4,450	83.6%	872	16.4%	5,322	84.6%	661	68.1%	309	31.9%	970	15.4%	5,111	81.2%	1,181	18.8%	6,292	100%
2007	4,379	81.2%	1017	18.8%	5,396	84.6%	633	64.2%	353	35.8%	986	15.4%	5,012	78.5%	1,370	21.5%	6,382	100%
2008	4,353	84.4%	804	15.6%	5,157	82.5%	715	65.5%	377	34.5%	1,092	17.5%	5,068	81.1%	1,181	18.9%	6,249	100%
2009	4,444	84.7%	800	15.3%	5,244	84.0%	653	65.5%	344	34.5%	997	16.0%	5,097	81.7%	1,144	18.3%	6,241	100%

Note: State of origin is state of residence at time of entry.

**COUNTRY OF ORIGIN OF INTERNATIONAL STUDENTS
FALL 2005 - FALL 2009**

COUNTRY	FALL 2005			FALL 2006			FALL 2007			FALL 2008			FALL 2009			% of 5 Year Total		
	UG	G	Tot	UG	G	Tot	UG	G	Tot	UG	G	Tot	UG	G	Tot	UG	G	Total
Algeria	0	0	0	0	0	0	0	0	0	0	0	0	1	0	1	0.18%	0.00%	0.13%
Armenia	1	0	1	0	0	0	0	0	0	0	0	0	0	0	0	0.18%	0.00%	0.13%
Australia	3	0	3	3	0	3	4	0	4	3	0	3	2	0	2	0.00%	0.00%	2.01%
Austria	1	0	1	2	0	2	1	0	1	1	0	1	1	0	1	1.07%	0.00%	0.81%
Bahamas	1	0	1	1	1	2	1	1	2	1	0	1	1	0	1	0.89%	1.08%	0.94%
Bahrain	0	1	1	0	0	0	0	0	0	0	0	0	0	0	0	0.00%	0.54%	0.13%
Bolivia	1	0	1	2	0	2	2	0	2	1	0	1	1	0	1	1.25%	0.00%	0.94%
Brazil	10	2	12	10	2	12	6	3	9	7	4	11	8	2	10	7.32%	7.03%	7.25%
Bulgaria	1	3	4	0	1	1	0	1	1	0	2	2	0	1	1	0.18%	4.32%	1.21%
Cameroon	0	1	1	0	0	0	0	0	0	0	0	0	0	0	0	0.00%	0.54%	0.13%
Canada	24	4	28	20	3	23	18	3	21	24	1	25	16	0	16	18.21%	5.95%	15.17%
Chile	0	0	0	1	0	1	0	0	0	0	0	0	0	0	0	0.18%	0.00%	0.13%
China, Republic of	1	2	3	0	1	1	2	1	3	5	4	9	10	7	17	3.21%	8.11%	4.43%
Colombia	5	1	6	0	1	1	0	2	2	0	2	2	0	1	1	0.89%	3.78%	1.61%
Croatia	1	0	1	1	0	1	0	0	0	0	0	0	0	0	0	0.36%	0.00%	0.27%
Czech Republic	0	0	0	0	0	0	0	0	0	0	0	0	0	0	0	0.00%	0.00%	0.00%
Denmark	2	0	2	1	0	1	1	0	1	0	0	0	0	0	0	0.71%	0.00%	0.54%
Ecuador	1	0	1	0	0	0	0	0	0	0	0	0	0	0	0	0.18%	0.00%	0.13%
El Salvador	1	0	1	0	0	2	0	0	0	0	0	0	0	0	0	0.18%	0.00%	0.40%
Estonia	0	0	0	0	0	0	0	0	0	1	0	1	0	0	0	0.18%	0.00%	0.13%
Finland	2	0	2	2	0	2	1	0	1	1	0	1	1	0	1	1.25%	0.00%	0.94%
France	6	4	10	11	1	12	8	2	10	10	2	12	10	2	12	8.04%	5.95%	7.52%
Gabon	1	0	1	0	0	0	0	1	1	0	0	0	0	0	0	0.18%	0.54%	0.27%
Georgia	0	0	0	0	0	0	1	0	1	0	0	0	0	0	0	0.18%	0.00%	0.13%
Germany	4	0	4	6	0	6	5	1	6	5	1	6	5	0	5	4.46%	1.08%	3.62%
Ghana	1	0	1	1	0	1	2	0	2	1	0	1	1	1	2	1.07%	0.54%	0.94%
Haiti	0	0	0	0	0	0	0	0	0	0	0	0	0	0	0	0.00%	0.00%	0.00%
Hong Kong	1	0	1	1	1	2	0	1	1	0	1	1	0	0	0	0.36%	1.62%	0.67%
Hungary	0	1	1	0	1	1	0	1	1	0	0	0	0	0	0	0.00%	1.62%	0.40%
Iceland	0	0	0	0	0	0	0	0	0	0	2	2	0	2	2	0.00%	2.16%	0.54%
India	4	5	9	3	3	6	3	3	6	7	3	10	5	2	7	3.93%	8.65%	5.10%
Indonesia	0	0	0	0	0	0	0	0	0	0	0	0	0	0	0	0.00%	0.00%	0.00%
Iran	0	0	0	0	0	0	0	0	0	0	0	0	0	0	0	0.00%	0.00%	0.00%
Ireland	3	0	3	2	0	2	2	0	2	1	0	1	2	1	3	1.79%	0.54%	1.48%
Israel	0	0	0	0	0	0	0	1	1	0	2	2	3	2	5	0.54%	2.70%	1.07%
Italy	0	0	0	0	0	0	0	0	0	1	0	1	1	0	1	0.36%	0.00%	0.27%
Jamaica	0	1	1	2	2	4	0	0	0	0	0	0	0	0	0	0.36%	1.62%	0.67%
Japan	0	2	2	0	2	2	0	0	0	1	0	1	1	0	1	0.36%	2.16%	0.81%
Jordan	0	0	0	0	0	0	0	0	0	1	0	1	0	0	0	0.18%	0.00%	0.13%
Kazakhstan	0	0	0	0	0	0	1	0	1	0	0	0	0	0	0	0.18%	0.00%	0.13%
Kenya	5	1	6	4	2	6	2	1	3	0	0	0	0	0	0	1.96%	2.16%	2.01%
Korea, Republic of	2	0	2	2	0	2	2	0	2	2	0	2	2	0	2	1.79%	0.00%	1.34%
Kyrgyzstan	0	0	0	1	0	1	0	0	0	0	0	0	0	0	0	0.18%	0.00%	0.13%
Lebanon	0	0	0	0	0	0	0	0	0	0	0	0	0	0	0	0.00%	0.00%	0.00%
Liberia	2	1	3	1	0	1	1	0	1	1	0	1	1	0	1	1.07%	0.54%	0.94%
Lithuania	0	0	0	0	1	1	0	1	1	0	0	0	0	0	0	0.00%	1.08%	0.27%
Macau	0	0	0	0	0	0	0	0	0	0	0	0	1	0	1	0.18%	0.00%	0.13%
Macedonia	0	0	0	0	0	0	1	0	1	0	0	0	0	0	0	0.18%	0.00%	0.13%
Mauritius	0	0	0	0	0	0	0	0	0	0	1	1	0	1	1	0.00%	1.08%	0.27%
Morocco	0	0	0	0	0	0	0	0	0	0	0	0	0	0	0	0.00%	0.00%	0.00%
Mexico	0	0	0	0	1	1	0	0	0	0	0	0	0	0	0	0.00%	0.54%	0.13%
Nepal	1	0	1	1	0	1	0	0	0	0	1	1	0	0	0	0.36%	0.54%	0.40%
Netherlands	1	1	2	1	1	2	1	0	1	2	0	2	1	0	1	1.07%	1.08%	1.07%
New Zealand	1	0	1	1	0	1	1	0	1	1	0	1	1	0	1	0.89%	0.00%	0.67%
Niger	0	0	0	0	0	0	0	0	0	0	0	0	0	0	0	0.00%	0.00%	0.00%
Nigeria	3	0	3	3	0	3	1	1	2	1	1	2	2	0	2	1.79%	1.08%	1.61%
Norway	1	3	4	0	0	0	3	0	3	0	0	0	1	2	3	0.89%	2.70%	1.34%
Pakistan	0	0	0	0	0	0	0	0	0	1	0	1	1	0	1	0.36%	0.00%	0.27%
Panama	0	0	0	0	0	0	0	0	0	0	0	0	0	0	0	0.00%	0.00%	0.00%
Peru	1	2	3	1	3	4	1	1	2	2	0	2	2	0	2	1.25%	3.24%	1.74%
Philippines	1	1	2	0	1	1	0	2	2	0	1	1	0	1	1	0.18%	3.24%	0.94%
Poland	0	2	2	0	1	1	0	0	0	0	0	0	0	0	0	0.00%	1.62%	0.40%

Portugal	0	0	0	0	0	0	0	0	0	0	0	0	0	0	0	0.00%	0.00%	0.00%
Romania	4	0	4	7	0	7	0	1	1	0	2	2	0	2	2	1.96%	2.70%	2.15%
Russia	1	0	1	0	0	0	0	0	0	2	0	2	3	0	3	1.07%	0.00%	0.81%
Saudi Arabia	0	0	0	0	1	1	15	3	18	27	4	31	16	4	20	10.36%	6.49%	9.40%
Senegal	1	1	2	1	0	1	1	0	1	0	0	0	0	0	0	0.54%	0.54%	0.54%
Sierra Leone	0	1	1	0	0	0	0	0	0	0	0	0	0	0	0	0.00%	0.54%	0.13%
Slovakia	0	0	0	0	0	0	0	0	0	1	0	1	2	0	2	0.54%	0.00%	0.40%
South Africa	1	0	1	1	0	1	0	0	0	0	1	1	0	1	1	0.36%	1.08%	0.54%
Spain	2	1	3	3	0	3	2	0	2	1	0	1	1	0	1	1.61%	0.54%	1.34%
Sri Lanka	0	0	0	0	0	0	0	0	0	0	0	0	0	0	0	0.00%	0.00%	0.00%
Swaziland	0	0	0	0	0	0	1	0	1	1	0	1	0	0	0	0.36%	0.00%	0.27%
Sweden	1	0	1	1	0	1	2	0	2	1	0	1	0	0	0	0.89%	0.00%	0.67%
Switzerland	1	0	1	1	0	1	1	0	1	1	0	1	0	0	0	0.71%	0.00%	0.54%
Taiwan	0	1	1	0	0	0	0	0	0	2	0	2	1	0	1	0.54%	0.54%	0.54%
Tanzania	1	0	1	1	0	1	0	0	0	0	0	0	0	0	0	0.36%	0.00%	0.27%
Thailand	0	1	1	0	0	0	0	0	0	0	0	0	0	0	0	0.00%	0.54%	0.13%
Tonga	1	0	1	0	0	0	0	0	0	0	0	0	0	0	0	0.18%	0.00%	0.13%
Trinidad and Tobago	0	0	0	0	0	0	0	1	1	0	2	2	0	0	0	0.00%	1.62%	0.40%
Turkey	0	0	0	0	0	0	0	0	0	1	0	1	1	1	0	0.36%	0.00%	0.27%
Uganda	0	0	0	2	0	2	2	0	2	2	0	2	1	0	1	1.25%	0.00%	0.94%
Ukraine	0	1	1	0	1	1	0	0	0	0	0	0	0	0	0	0.00%	1.08%	0.27%
United Kingdom	4	0	4	2	0	2	0	0	0	2	2	4	3	1	4	1.96%	1.62%	1.88%
Uzbekistan	1	0	1	1	0	1	1	0	1	0	0	0	0	0	0	0.54%	0.00%	0.40%
Venezuela	0	0	0	0	0	2	1	0	1	0	0	0	0	0	0	0.18%	0.00%	0.40%
Vietnam	0	0	0	0	0	0	0	1	1	3	1	4	5	1	6	1.43%	1.62%	1.48%
Yugoslavia	0	0	0	0	0	0	0	0	0	0	0	0	0	0	0	0.00%	0.00%	0.00%
Zambia	1	0	1	1	0	1	1	0	1	0	0	0	0	0	0	0.54%	0.00%	0.40%
Zimbabwe	2	0	2	2	0	2	1	1	2	1	1	2	0	1	1	1.07%	1.62%	1.21%
TOTAL	114	44	158	107	31	138	99	34	133	126	41	167	114	35	149	100.0%	100.0%	100.0%

GEOGRAPHICAL DISTRIBUTION OF STUDENTS BY STATE FALL 2005 - FALL 2009

STATE	FALL 2005			FALL 2006			FALL 2007			FALL 2008			FALL 2009			% of 5 Year Total		
	UG	G	Total	UG	G	Total	UG	G	Total	UG	G	Total	UG	G	Total	UG	G	Total
Alabama	4	0	4	3	0	3	2	0	2	2	0	2	2	0	2	0.05%	0.00%	0.04%
Alaska	1	0	1	1	0	1	1	0	1	1	0	1	2	0	2	0.02%	0.00%	0.02%
Arizona	3	0	3	3	0	3	2	0	2	2	0	2	2	1	3	0.05%	0.00%	0.04%
Arkansas	0	0	0	1	0	1	1	1	2	1	1	2	1	0	1	0.01%	0.04%	0.02%
California	4	1	5	6	1	7	2	3	5	4	1	5	4	0	4	0.08%	0.12%	0.09%
Colorado	2	0	2	3	0	3	3	0	3	3	0	3	4	0	4	0.05%	0.00%	0.04%
Connecticut	8	0	8	4	0	4	5	0	5	8	0	8	9	1	10	0.12%	0.00%	0.10%
Delaware	4	0	4	2	0	2	1	0	1	1	0	1	3	0	3	0.04%	0.00%	0.03%
Florida	42	5	47	39	2	41	26	4	30	43	4	47	32	3	35	0.73%	0.30%	0.65%
Georgia	63	6	69	50	6	56	58	13	71	65	9	74	59	7	66	1.16%	0.68%	1.06%
Hawaii	2	0	2	2	0	2	2	0	2	0	0	0	0	0	0	0.03%	0.00%	0.02%
Idaho	1	0	1	1	0	1	0	0	0	0	0	0	0	0	0	0.01%	0.00%	0.01%
Illinois	9	3	12	8	1	9	7	0	7	9	2	11	4	2	6	0.16%	0.12%	0.15%
Indiana	3	0	3	2	1	3	3	3	6	4	1	5	5	0	5	0.06%	0.10%	0.07%
Iowa	6	0	6	5	0	5	3	1	4	3	1	4	2	0	2	0.08%	0.04%	0.07%
Kansas	0	1	1	1	0	1	4	0	4	4	0	4	3	0	3	0.04%	0.02%	0.04%
Kentucky	8	1	9	5	1	6	4	0	4	4	3	7	3	2	5	0.10%	0.10%	0.10%
Louisiana	4	0	4	1	0	1	1	0	1	1	0	1	1	0	1	0.03%	0.00%	0.03%
Maine	0	0	0	1	0	1	2	0	2	0	0	0	1	1	2	0.01%	0.00%	0.01%
Maryland	49	2	51	51	1	52	57	1	58	48	3	51	46	3	49	1.00%	0.14%	0.83%
Massachusetts	8	0	8	10	0	10	8	1	9	10	2	12	9	2	11	0.18%	0.06%	0.15%
Michigan	2	5	7	4	3	7	5	6	11	8	4	12	7	2	9	0.09%	0.36%	0.15%
Minnesota	8	0	8	3	0	3	2	0	2	7	1	8	5	2	7	0.10%	0.02%	0.08%
Mississippi	2	0	2	3	0	3	2	0	2	4	0	4	1	0	1	0.05%	0.00%	0.04%
Missouri	1	1	2	3	1	4	3	0	3	4	0	4	3	0	3	0.05%	0.04%	0.05%
Montana	1	0	1	0	0	0	0	0	0	0	0	0	0	0	0	0.00%	0.00%	0.00%
Nebraska	0	1	1	1	1	2	1	0	1	1	0	1	2	0	2	0.01%	0.04%	0.02%
Nevada	5	0	5	0	0	0	1	0	1	0	0	0	0	0	0	0.03%	0.00%	0.02%
New Hampshire	2	0	2	9	0	9	8	0	8	6	0	6	4	0	4	0.12%	0.00%	0.10%
New Jersey	14	2	16	19	2	21	14	1	15	19	2	21	24	1	25	0.32%	0.14%	0.29%
New Mexico	3	1	4	3	0	3	1	0	1	1	0	1	2	0	2	0.04%	0.02%	0.04%
New York	27	14	41	31	7	38	34	1	35	38	2	40	39	2	41	0.64%	0.48%	0.61%
North Carolina	135	200	335	121	233	354	128	260	388	136	277	413	129	264	393	2.55%	19.28%	5.85%
Ohio	49	6	55	43	2	45	41	3	44	42	4	46	42	3	45	0.86%	0.30%	0.75%
Oklahoma	1	0	1	1	0	1	0	0	0	0	0	0	1	0	1	0.01%	0.00%	0.01%
Oregon	3	0	3	3	0	3	0	0	0	0	1	1	0	1	1	0.03%	0.02%	0.03%
Pennsylvania	21	4	25	20	3	23	18	7	25	23	4	27	22	4	26	0.40%	0.36%	0.39%
Rhode Island	1	0	1	1	1	2	1	1	2	3	0	3	2	0	2	0.03%	0.04%	0.03%
South Carolina	4,483	980	5,463	4,450	872	5,322	4,379	1,017	5,396	4,353	804	5,157	4,444	800	5,244	86.51%	72.99%	83.84%
South Dakota	0	0	0	0	0	0	0	0	0	0	0	0	0	0	0	0.00%	0.00%	0.00%
Tennessee	21	2	23	15	2	17	11	1	12	10	1	11	8	1	9	0.28%	0.12%	0.25%
Texas	9	0	9	11	1	12	12	1	13	12	2	14	10	1	11	0.22%	0.08%	0.19%
Utah	2	0	2	2	0	2	1	0	1	1	0	1	0	0	0	0.03%	0.00%	0.02%
Vermont	2	0	2	1	0	1	1	0	1	2	0	2	2	0	2	0.03%	0.00%	0.02%
Virginia	53	6	59	51	6	57	46	7	53	44	7	51	29	5	34	0.95%	0.52%	0.86%
Washington	2	0	2	1	0	1	1	0	1	1	0	1	3	0	3	0.02%	0.00%	0.02%
West Virginia	9	2	11	7	2	9	7	2	9	9	1	10	8	0	8	0.16%	0.14%	0.15%
Wisconsin	2	2	4	1	1	2	1	1	2	2	0	2	1	0	1	0.03%	0.08%	0.04%
Wyoming	0	0	0	0	0	0	0	0	0	0	0	0	0	0	0	0.00%	0.00%	0.00%
Total U.S. States	5,079	1,245	6,324	5,003	1,150	6,153	4,910	1,335	6,245	4,939	1,137	6,076	4,980	1,108	6,088	97.61%	96.72%	97.43%
Dist. of Columbia	1	0	1	1	0	1	0	0	0	0	0	0	0	0	0	0.01%	0.00%	0.01%
International	148	55	203	107	31	138	99	34	133	126	41	167	114	35	149	2.35%	3.20%	2.52%
Puerto Rico	0	0	0	0	0	0	0	0	0	0	0	0	0	0	0	0.00%	0.00%	0.00%
Virgin Islands of the U.S	0	0	0	0	0	0	0	0	0	0	0	0	0	0	0	0.00%	0.00%	0.00%
Unknown	0	0	0	0	0	0	3	1	4	3	3	6	3	1	4	0.03%	0.08%	0.04%
Grand Total	5,228	1,300	6,528	5,111	1,181	6,292	5,012	1,370	6,382	5,068	1,181	6,249	5,097	1,144	6,241	100.0%	100.0%	100.0%

**GEOGRAPHICAL DISTRIBUTION OF STUDENTS
BY S.C. COUNTY
FALL 2005 - FALL 2009**

COUNTY	FALL 2005			FALL 2006			FALL 2007			FALL 2008			FALL 2009			% of 5 Year Total		
	UG	G	Total	UG	G	Total	UG	G	Total	UG	G	Total	UG	G	Total	UG	G	Total
Abbeville	16	12	28	9	13	22	8	9	17	7	3	10	5	14	19	0.18%	0.83%	0.30%
Aiken	80	11	91	84	12	96	74	6	80	74	5	79	78	5	83	1.53%	0.63%	1.36%
Allendale	8	0	8	4	0	4	4	0	4	3	0	3	2	0	2	0.08%	0.00%	0.07%
Anderson	62	23	85	80	14	94	84	25	109	79	24	103	76	106	182	1.50%	3.11%	1.82%
Bamberg	3	0	3	2	0	2	10	0	10	6	0	6	10	0	10	0.12%	0.00%	0.10%
Barnwell	12	3	15	10	5	15	8	12	20	12	4	16	19	1	20	0.24%	0.41%	0.27%
Beaufort	91	45	136	89	3	92	93	73	166	95	6	101	92	2	94	1.81%	2.09%	1.87%
Berkeley	125	4	129	123	3	126	119	3	122	121	7	128	128	4	132	2.42%	0.34%	2.02%
Calhoun	13	0	13	12	1	11	8	1	9	7	1	9	5	2	7	0.18%	0.08%	0.16%
Charleston	280	18	298	296	19	315	293	14	307	254	18	272	230	19	249	5.31%	1.43%	4.57%
Cherokee	33	3	36	45	2	47	47	3	50	39	5	44	35	4	39	0.78%	0.28%	0.68%
Chester	109	32	141	113	14	127	102	17	119	123	18	141	119	11	130	2.22%	1.49%	2.09%
Chesterfield	73	16	89	76	16	92	69	19	88	55	27	82	65	8	73	1.33%	1.39%	1.05%
Clarendon	20	11	31	21	8	29	18	13	31	11	15	26	6	4	10	0.30%	0.83%	0.40%
Colleton	33	2	35	31	2	33	24	4	28	23	0	23	14	1	15	0.49%	0.15%	0.42%
Darlington	35	2	37	30	7	37	37	10	47	40	11	51	36	9	45	0.70%	0.63%	0.69%
Dillon	23	14	37	26	14	40	16	12	28	22	5	27	18	5	23	0.41%	0.81%	0.49%
Dorchester	125	8	133	135	4	139	135	8	143	120	6	126	123	2	125	2.50%	0.45%	2.11%
Edgefield	8	0	8	8	1	9	7	1	8	9	0	9	11	0	11	0.17%	0.03%	0.14%
Fairfield	28	11	39	24	10	34	32	2	34	41	3	44	34	6	40	0.62%	0.52%	0.61%
Florence	77	11	88	89	13	102	75	11	86	66	21	87	72	23	95	1.49%	1.28%	1.45%
Georgetown	64	1	65	58	3	61	63	1	64	60	4	64	46	5	51	1.14%	0.23%	0.97%
Greenville	316	29	345	297	37	334	294	30	324	292	19	311	334	20	354	6.02%	2.19%	5.29%
Greenwood	33	74	107	27	66	93	24	54	78	33	42	75	33	34	67	0.59%	4.38%	1.33%
Hampton	8	3	11	2	2	4	1	1	2	1	0	1	4	0	4	0.06%	0.10%	0.07%
Horry	82	25	107	97	11	108	87	6	93	101	12	113	90	9	99	1.79%	1.02%	1.65%
Jasper	2	2	4	4	1	5	1	3	4	2	1	3	3	0	3	0.05%	0.11%	0.06%
Kershaw	63	39	102	63	44	107	71	54	125	84	50	134	63	16	79	1.35%	3.29%	1.73%
Lancaster	150	36	186	138	34	172	152	37	189	144	35	179	146	37	183	2.87%	2.90%	2.88%
Laurens	39	5	44	33	8	41	38	3	41	42	0	42	42	9	51	0.76%	0.41%	0.69%
Lee	10	0	10	14	3	17	7	3	10	4	1	5	9	0	9	0.17%	0.11%	0.16%
Lexington	257	90	347	264	91	355	249	106	355	241	27	268	234	18	252	4.89%	5.38%	5.00%
Marion	15	1	16	19	6	25	19	4	23	14	1	15	11	3	14	0.31%	0.24%	0.29%
Marlboro	1	0	1	1	0	1	1	2	3	2	2	4	3	2	5	0.03%	0.10%	0.04%
McCormick	29	2	31	37	5	42	24	7	31	24	3	27	22	3	25	0.53%	0.32%	0.49%
Newberry	20	8	28	17	9	26	23	3	26	26	9	35	31	10	41	0.46%	0.63%	0.49%
Oconee	56	5	61	50	4	54	51	2	53	40	4	44	46	7	53	0.95%	0.36%	0.84%
Orangeburg	59	8	67	63	19	82	60	2	62	54	6	60	49	4	53	1.12%	0.63%	1.03%
Pickens	49	3	52	67	2	69	62	5	67	63	6	69	65	10	75	1.20%	0.42%	1.05%
Richland	402	74	476	422	75	497	408	89	497	405	55	460	405	45	450	8.02%	5.48%	7.54%
Saluda	14	1	15	14	3	17	10	2	12	4	3	7	6	2	8	0.19%	0.18%	0.19%
Spartanburg	145	14	159	158	13	171	155	12	167	151	10	161	164	9	173	3.03%	0.94%	2.63%
Sumter	110	9	119	121	8	129	127	12	139	117	10	127	118	7	125	2.33%	0.75%	2.03%
Union	53	5	58	38	4	42	41	3	44	28	1	29	19	1	20	0.70%	0.23%	0.61%
Williamsburg	29	1	30	27	0	27	20	0	20	13	3	16	18	1	19	0.42%	0.08%	0.35%
York	1,223	319	1,542	1,112	263	1,375	1,128	333	1,461	1,200	321	1,521	1,305	322	1,627	23.43%	25.26%	23.85%
Total S.C.	4,483	980	5,463	4,450	872	5,228	4,379	1,017	5,396	4,352	804	5,157	4,444	800	5,244	86.78%	72.51%	83.95%
Out-of-State	590	269	859	554	278	832	534	319	853	590	336	926	539	309	848	11.02%	24.49%	13.69%
International	114	44	158	107	31	138	99	34	133	126	41	167	114	35	149	2.20%	3.00%	2.36%
Grand Total	5,187	1,293	6,480	5,111	1,181	6,198	5,012	1,370	6,382	5,068	1,181	6,250	5,097	1,144	6,241	100.00%	100.00%	100.00%

UNDERGRADUATE HEADCOUNT ENROLLMENT FALL 2005 - FALL 2009

COLLEGE / DEGREE PROGRAMS	2005	2006	2007	2008	2009	% OF 5 YEAR TOTAL	08 TO 09 % DIFF.
ARTS & SCIENCES	2,056	2,054	1,975	1,957	1,997	37.1%	2.0%
Biology	320	338	320	332	317	6.0%	-4.5%
Chemistry	73	86	87	121	126	1.8%	4.1%
English	164	153	137	168	175	2.9%	4.2%
Environmental Science (B.S.)	14	7	13	12	22	0.3%	83.3%
Environmental Studies (B.A.)	10	15	19	16	18	0.3%	12.5%
General Communication Disorders	56	72	65	52	44	1.1%	-15.4%
History	169	178	152	157	141	2.9%	-10.2%
Human Nutrition	59	65	92	87	86	1.4%	-1.1%
Integrated MKTG Communication *	33	33	47	50	48	0.8%	-4.0%
Mass Communication	73	72	71	58	59	1.2%	1.7%
Mathematics (B.A.)	40	23	32	39	51	0.7%	30.8%
Mathematics (B.S.)	15	21	26	25	38	0.5%	52.0%
Medical Technology	*	*	0	0	0	0.0%	N/A
Modern Languages	65	59	49	34	57	1.0%	67.6%
Philosophy & Religious Studies	37	33	23	20	19	0.5%	-5.0%
Political Science	175	141	147	134	121	2.7%	-9.7%
Pre-Engineering	11	7	12	9	3	0.2%	-66.7%
Pre-Integrated Marketing	75	94	74	64	62	1.4%	-3.1%
Pre-Mass Communication	109	113	108	93	82	1.9%	-11.8%
Psychology	313	297	266	274	299	5.4%	9.1%
Science Communications	2	2	4	4	4	0.1%	0.0%
Social Work	97	92	99	102	101	1.8%	-1.0%
Sociology	146	153	132	106	124	2.4%	17.0%
BUSINESS ADMINISTRATION	1,107	1,157	1,186	1,272	1,215	22.0%	-4.5%
Business Administration	897	939	923	935	869	16.9%	-7.1%
Computer Science	76	78	74	78	66	1.4%	-15.4%
Economics	8	17	21	27	26	0.4%	-3.7%
Information Design**			14	38	59	0.4%	N/A
Integrated MKTG Communication *	33	33	47	50	48	0.8%	-4.0%
Sport Manangement *	93	90	107	144	147	2.1%	2.1%
EDUCATION	969	943	945	948	1,030	17.9%	8.6%
Athletic Training ***				29	65	0.3%	N/A
Early Childhood Education	261	273	283	254	259	4.9%	2.0%
Elementary Education	300	261	232	187	186	4.3%	-0.5%
Exercise Science ***				19	65	0.3%	N/A
Family & Consumer Science	92	89	69	70	46	1.4%	-34.3%
Middle Level Education	19	40	43	48	59	0.8%	N/A
Physical Education	146	134	153	124	113	2.5%	-8.9%
Special Education	58	57	58	73	90	1.2%	23.3%
Sport Manangement *	93	89	107	144	147	2.1%	2.1%
VISUAL & PERFORMING ARTS	853	827	790	731	724	14.5%	-1.0%
Art (B.A.)	111	104	98	78	72	1.7%	-7.7%
Art (B.F.A.)	358	346	356	319	297	6.2%	-6.9%
Art History (B.A.)	26	24	24	29	38	0.5%	31.0%
Dance	72	76	59	56	50	1.2%	-10.7%
Music (B.A.)	50	51	33	41	46	0.8%	12.2%
Music Education (Choral)	41	44	34	33	39	0.7%	18.2%
Music Education (Instrumental)	58	57	67	69	72	1.2%	4.3%
Music (Performance)	32	32	32	33	22	0.6%	-33.3%
Theatre	105	93	87	73	88	1.6%	20.5%
PRE-MAJOR	453	405	462	354	386	7.6%	9.0%
New Start Undecided	1	1	112	1	0	0.4%	-100.0%
Pre-Business	9	6	11	8	0	0.1%	-100.0%
Pre-Education	4	3	3	5	2	0.1%	-60.0%
Pre-Major	142	118	96	98	72	1.9%	-26.5%
Pre-Nursing	17	6	0	0	0	0.1%	0.0%
Distance Learning	255	255	218	224	287	4.6%	28.1%
Non-Degree Transient	13	13	11	4	9	0.2%	125.0%
Non-Degree Undergraduate	12	3	11	14	16	0.2%	14.3%

Note: Counts include double majors and students working toward two degrees.

*Interdisciplinary program

Program began in Fall 2007 *Program began in Fall 2008

**UNDERGRADUATE HEADCOUNT ENROLLMENT
SPRING 2006 - SPRING 2010**

COLLEGE / DEGREE PROGRAMS	2006	2007	2008	2009	2010	% OF 5 YEAR TOTAL	08 TO 09 % DIFF.
ARTS & SCIENCES	1969	1,961	1,895	1,810	1,887	31.7%	-4.5%
Biology	300	308	295	277	271	4.9%	-6.1%
Chemistry	71	78	87	111	102	1.4%	27.6%
English	130	134	134	161	175	2.3%	20.1%
Environmental Science (B.S.)	9	9	15	18	14	0.2%	20.0%
Environmental Studies (B.A.)	15	15	21	15	23	0.3%	-28.6%
General Communication Disorders	65	65	64	50	41	1.0%	-21.9%
Gerontology (Cert.)	10	11	10	0	3	0.1%	-100.0%
History	166	167	148	148	150	2.6%	0.0%
Human Nutrition	61	69	80	80	81	1.2%	0.0%
Integrated Marketing Communication #	38	36	40	38	51	0.6%	-5.0%
Mass Communication	82	82	69	60	58	1.2%	-13.0%
Mathematics (B.A.)	38	39	31	34	45	0.6%	9.7%
Mathematics (B.S.)	16	20	26	22	15	0.3%	-15.4%
Modern Languages	65	54	49	36	57	0.8%	-26.5%
Philosophy & Religious Studies	38	35	25	20	23	0.5%	-20.0%
Political Science	159	138	139	123	122	2.3%	-11.5%
Pre-Engineering	4	4	9	4	2	0.1%	-55.6%
Pre-Integrated Marketing	90	80	83	69	61	1.3%	-16.9%
Pre-Mass Communication	82	77	87	72	65	1.3%	-17.2%
Psychology	287	290	262	276	298	4.6%	5.3%
Science Communications	2	2	3	6	4	0.1%	100.0%
Social Work	94	95	98	90	95	1.6%	-8.2%
Sociology	147	153	120	100	131	2.2%	-16.7%
BUSINESS ADMINISTRATION	1037	1,079	1,170	1,176	1,189	18.5%	0.5%
Business Administration	842	871	883	854	862	14.3%	-3.3%
Computer Science	62	71	77	70	52	1.2%	-9.1%
Economics	12	17	21	29	23	0.3%	38.1%
Integrated Marketing Communication #	38	36	40	38	51	0.6%	-5.0%
Sport Management #	83	84	125	141	145	1.8%	12.8%
Information Design			24	44	56	0.3%	83.3%
EDUCATION	898	886	877	906	1,018	14.8%	3.3%
Athletic Training *				37	66	0.2%	
Early Childhood Education	253	259	243	239	250	4.1%	-1.6%
Elementary Education	249	235	206	171	144	3.6%	-17.0%
Exercise Science *				28	94	0.1%	
Family & Consumer Science (HEED)	104	80	63	62	69	1.3%	-1.6%
Middle Level Education	18	46	44	49	58	0.7%	11.4%
Physical Education	136	131	142	109	97	2.2%	-23.2%
Special Education	55	51	54	70	95	1.0%	29.6%
Sport Management #	83	84	125	141	145	1.8%	12.8%
VISUAL & PERFORMING ARTS	777	782	725	683	644	12.3%	-5.8%
Art (B.A.)	105	93	89	74	268	1.5%	-16.9%
Art (B.F.A.)	334	327	320	292	61	5.3%	-8.8%
Art History (B.A.)	25	24	24	36	35	0.5%	50.0%
Dance	66	69	51	50	44	1.0%	-2.0%
Music (B.A.)	41	56	29	35	41	0.7%	20.7%
Music Education (Choral)	33	36	30	32	30	0.5%	6.7%
Music Education (Instrumental)	49	58	69	71	57	1.0%	2.9%
Music (Performance)	28	27	31	25	22	0.5%	-19.4%
Theatre	96	92	82	68	86	1.4%	-17.1%
PRE-MAJOR	243	261	236	251	227	4.1%	6.4%
New Start Undecided	1	0	1	0		0.0%	-100.0%
Pre-Business	5	9	5	4	7	0.1%	-20.0%
Pre-Education	2	2	0	3		0.0%	100.0%
Pre-Major	72	87	79	55		1.2%	-30.4%
Undeclared	152	159	151	189	220	2.7%	25.2%
Pre-Nursing	11	4	0	0		0.1%	0.0%
Distance Learning						0.0%	0.0%
Non-Degree Transient	41	45	53	44	19	0.8%	-17.0%
Non-Degree Undergraduate	7	9	8	13	18	0.2%	62.5%

Note: Counts include double majors and students working toward two degrees.

* New program began in Fall 2008

Interdisciplinary program

**GRADUATE HEADCOUNT ENROLLMENT
FALL 2005 - FALL 2009**

COLLEGE / DEGREE PROGRAMS	2005	2006	2007	2008	2009	% OF 5-YEAR TOTAL	08 TO 09 % DIFF.
ARTS AND SCIENCES	131	148	196	212	219	15.5%	3.3%
Biology	21	12	16	15	15	1.4%	0.0%
English	16	15	17	17	20	1.5%	17.6%
History	13	8	6	13	15	0.9%	15.4%
Human Nutrition	27	25	32	36	40	2.7%	11.1%
Human Nutrition - Certification	3		1	1	1	0.1%	0.0%
Liberal Arts	19	20	23	18	12	1.6%	-33.3%
Mathematics	2 ***		***	***	***	0.0%	N/A
S.S.P./ M.S.School Psychology	27	30	31	32	31	2.6%	-3.1%
MSW Social Work	*	32	63	71	80		N/A
Spanish	3	6	7	9	5	0.5%	-44.4%
BUSINESS ADMINISTRATION	233	196	192	196	193	17.3%	-1.5%
Business Administration	201	162	158	171	184	15.0%	7.6%
Executive MBA	26	30	32	25	9	2.1%	-64.0%
Software Development	6	4	2	0	0	0.2%	0.0%
EDUCATION	294	299	275	303	373	26.5%	23.1%
Counseling & Dev (Guidance)	46	39	38	39	57	3.8%	46.2%
Curriculum and Instruction (Med)	27	36	33	33	65	3.3%	97.0%
Educational Leadership (MED)	67	79	70	88	115	7.2%	30.7%
Early Childhood Education ##					23	0.4%	N/A
Middle Level Education	32	30	19	10	9	1.7%	-10.0%
Physical Education	11	18	19	22	18	1.5%	-18.2%
Reading	41	18	19	21	17	2.0%	-19.0%
Secondary Education (MAT)	****	****	****	****	****	3.4%	N/A
Biology	2	4	2	3	3	0.2%	0.0%
Business	11	5	4	5	2	0.5%	-60.0%
English	11	7	9	10	4	0.7%	-60.0%
Family Consumer Science	2	1	2	1	0	0.1%	-100.0%
French	2	1	1	0	0	0.1%	0.0%
Mathematics	2	4	6	5	4	0.4%	-20.0%
Social Studies	12	22	17	14	14	1.4%	0.0%
Spanish	1		2	2	1	0.1%	-50.0%
Special Education	15	21	18	26	13	1.6%	-50.0%
Teacher Education Art K-12	5	5	5	7	6	0.5%	-14.3%
Teacher Education Dance K-12	0	0	0	0	0	0.0%	0.0%
Teacher Education Music K-12	3	4	5	6	5	0.4%	-16.7%
Teacher Education Physical Ed. K-12	4	5	6	11	17	0.7%	54.5%
EDUCATION NON-DEGREE	8	21	46	45	38		
ACRT	2	0	7	8	2	0.3%	-75.0%
ICRT	5	5	9	23	8	0.9%	-65.2%
OBRG	*	15	0	0	0	0.3%	N/A
RCRT	1	1	4	2	0	0.1%	-100.0%
TESL			26	12	28	1.1%	133.3%
VISUAL & PERFORMING ARTS	56	59	64	60	61	5.1%	1.7%
Art Administration	22	24	19	14	15	1.6%	7.1%
Art Education	5	9	9	7	4	0.6%	-42.9%
Conducting	11	6	10	12	7	0.8%	-41.7%
Fine Arts	9	5	5	6	11	0.6%	83.3%
Music Education	3	2	6	8	12	0.5%	50.0%
Music Performance	6	13	15	13	12	1.0%	-7.7%
UNDESIGNATED/UNASSIGNED	274	467	597	365	212	32.8%	-41.9%
GNDG	273	456	595	364	210	32.5%	-42.3%
TRNS	1	11	2	1	2	0.3%	100.0%
TOTAL	996	1,190	1,370	1,181	1,096	100.0%	-7.2%

* New program
 ** MEd EDAS changed to MEd EDLD in Fall 1999
 *** Program discontinued
 **** Concentrations broken out into separate program options
 ## Began in Fall 2008

GRADUATE HEADCOUNT ENROLLMENT

Spring 2006 - Spring 2010

COLLEGE / DEGREE PROGRAMS	2006	2007	2008	2009	2010	% OF 5-YEAR TOTAL	09 TO 10 % DIFF.
ARTS AND SCIENCES	131	157	193	212	230	18.8%	8.5%
Biology	18	15	12	13	13	1.4%	0.0%
English	15	11	17	16	24	1.7%	50.0%
History	11	10	7	11	16	1.1%	45.5%
Human Nutrition	32	32	42	49	46	4.1%	-6.1%
Human Nutrition - Certification	3	2	0	2		0.1%	-100.0%
Liberal Arts	20	20	18	12	15	1.7%	25.0%
School Psychology	28	30	30	32	30	3.0%	-6.3%
Social Work *		31	59	67	79	4.8%	17.9%
Spanish	4	6	8	10	7	0.7%	-30.0%
BUSINESS ADMINISTRATION	193	179	195	190	204	19.5%	7.4%
Business Administration	168	143	161	168	195	17.0%	16.1%
Executive MBA	20	29	32	22	9	2.3%	-59.1%
Software Project Mgmt --Certification		2	0	0		0.0%	0.0%
Software Development	5	5	2	0		0.2%	0.0%
EDUCATION	255	285	262	319	383	30.6%	20.1%
Counseling & Dev (Guidance)	38	37	37	39	55	4.2%	41.0%
Curriculum and Instruction (Med)	28	29	26	34	64	3.7%	88.2%
Early Childhood Education (MAT)				19	30	1.0%	57.9%
Educational Leadership	59	73	66	90	114	8.2%	26.7%
Middle Level Education	23	30	16	5	9	1.7%	80.0%
Physical Education	14	22	18	24	18	2.0%	-25.0%
Reading	25	19	18	16	18	2.0%	12.5%
Secondary Education (MAT)	****	****	****	****	****		
Biology	4	3	2	3	4	0.3%	33.3%
Business	6	3	6	5	2	0.4%	-60.0%
English	8	6	6	10	8	0.8%	-20.0%
Family Consumer Science	2	1	2	1		0.1%	-100.0%
French	3	1	0	0		0.1%	0.0%
Mathematics	3	6	5	5	4	0.5%	-20.0%
Social Studies	16	21	15	13	18	1.7%	38.5%
Spanish	0	0	2	2	1	0.1%	-50.0%
Secondary Education (MEd)						0.0%	0.0%
Special Education	14	20	26	25	14	2.0%	-44.0%
Teacher Education Art K-12	5	5	6	7	7	0.6%	0.0%
Teacher Education Dance K-12						0.0%	0.0%
Teacher Education Music K-12	1	3	5	6	4	0.4%	-33.3%
Teacher Education Physical Ed. K-12	6	6	6	15	13	0.9%	-13.3%
EDUCATION Non-Degree	9	18	33	64	36	3.3%	-43.8%
ACRT	3	6	4	33		0.9%	-100.0%
ICRT	6	8	10	7	7	0.8%	0.0%
RCRT	0	4	1	2	1	0.2%	-50.0%
TESL			18	22	28	1.4%	27.3%
VISUAL & PERFORMING ARTS	57	63	63	53	62	6.1%	17.0%
Art Administration	19	23	17	13	14	1.7%	7.7%
Art Education	6	9	10	6	2	0.7%	-66.7%
Conducting	7	7	8	10	9	0.8%	-10.0%
Fine Arts	8	6	6	5	12	0.8%	140.0%
Music Education	6	6	6	7	12	0.8%	71.4%
Music Performance	11	12	16	12	13	1.3%	8.3%
UNDESIGNATED/UNASSIGNED	246	106	261	245	215	21.8%	-12.2%
GNDG	242	105	259	227	183	20.7%	-19.4%
TRNS	4	1	2	2	2	0.2%	0.0%
Psychology Professional Development Student *				16	30		87.5%
TOTAL	891	808	1,007	1,083	1,130	100.0%	4.3%

* New program

*** Program discontinued

**** Concentrations broken out into separate program options:

ELEM (MEd) & SCED (MEd) changed to options under Curriculum and Instruction (MEd)

NEW START

HEADCOUNT ENROLLMENT AND CREDIT HOUR PRODUCTION

CATEGORY	2007			2008			2009		
	Spring	Summer	Fall	Spring	Summer	Fall	Spring	Summer	Fall
Headcount	417	147	406	404	159	450	431	193	473
CHP	4,325	872	4,170	4,101	909	4,671	4,515	1,200	5,006

HEADCOUNT ENROLLMENT BY STATUS AND CLASS

STATUS	2007			2008			2009		
	Spring	Summer	Fall	Spring	Summer	Fall	Spring	Summer	Fall
New Freshmen	0	0	0	0	0	1	0	0	0
New Transfer	34	6	57	38	7	70	25	13	51
Readmit	44	18	55	39	17	67	38	21	67
Continuing	331	120	283	324	131	297	361	154	341
Other	8	3	11	3	4	15	7	5	14
TOTAL	417	147	406	404	159	450	431	193	473

CLASS	2007			2008			2009		
	Spring	Summer	Fall	Spring	Summer	Fall	Spring	Summer	Fall
Freshman	19	8	28	27	1	24	13	3	13
Sophomore	55	15	63	52	15	69	72	23	77
Junior	106	34	89	104	38	121	111	40	125
Senior	220	85	209	208	98	215	216	118	231
Undergrad Special	17	5	17	13	7	21	19	9	27
Grad Degree Seeking	0	0	0	0	0	0	0	0	0
Grad Conditional	0	0	0	0	0	0	0	0	0
Grad Special	0	0	0	0	0	0	0	0	0
TOTAL	417	147	406	404	159	450	431	193	473

HEADCOUNT ENROLLMENT BY ETHNIC CATEGORY AND GENDER

ETHNIC CATEGORY	2007			2008			2009		
	Spring	Summer	Fall	Spring	Summer	Fall	Spring	Summer	Fall
Black, non-Hispanic	113	41	109	111	42	130	120	49	122
White, non-Hispanic	288	98	279	271	104	296	290	134	325
American Indian/Alaskan	1	2	2	5	2	6	5	1	6
Asian/Pacific Islander	5	2	6	8	5	8	8	5	8
International	0	0	1	0	0	0	0	0	0
Hispanic	10	4	9	9	6	10	8	4	12
Unknown	0	0	0	0	0	0	0	0	0
Total	417	147	406	404	159	450	431	193	473

GENDER	2007			2008			2009		
	Spring	Summer	Fall	Spring	Summer	Fall	Spring	Summer	Fall
Male	139	49	141	138	57	153	159	81	179
Female	278	98	265	266	102	297	272	112	294
Total	417	147	406	404	159	450	431	193	473

NOTE: The New Start program is a service/information program for adults age 25 and older who are beginning or continuing their education at the undergraduate level.

**Ratio of FTE Students to FTE Teaching Faculty
FALL 2005 - FALL 2009**

(Performance Funding Indicator 3A)

	FALL 2005	FALL 2006	FALL 2007	FALL 2008	FALL 2009
Credit Hour Production	80,340	79,630	78,570	78,320	78,509
Undergraduate	73,547	73,391	71,225	71,502	71,243
Graduate	6,793	6,239	7,345	6,818	7,266
FTE Students*	5,469	5,413	5,360	5,335	5,355
Undergraduate	4,903	4,893	4,748	4,767	4,750
Graduate	566	520	612	568	606
FTE Teaching Faculty**	386	362	374	354	353
FTE Students/FTE Faculty	14.2	15.0	14.3	15.1	15.2

* FTE Students = CHP divided by 15 for undergraduates & 12 for graduates.

** FTE Teaching Faculty=Headcount FT Instructional Faculty(who teach at least 3 hrs Fall) and FTE of Part-time faculty.

CREDIT HOUR PRODUCTION BY DEPARTMENT

FALL 2006-2009

Department	2006F		2007F		2008F		2009F		09 TO 10 % DIFF.	
	UG	G	UG	G	UG	G	UG	G	UG	G
Arts and Sciences	40,111	1,551	38,827	1,929	38,685	2,089	37,572	2,103	-3%	1%
Biology	4,073	124	3,791	115	3,960	136	3,478	137	-12%	1%
BIOL	3,886	116	3,784	115	3,866	132	3,471	129	-10%	-2%
SCIE	187	8	7		94	4	7	8	-93%	100%
Chemistry	2,802		3,208	8	3,321	8	3,457		4%	-100%
CHEM	1,429		1,359	8	1,696	8	1,701		0%	-100%
ENVS			79		54		70		30%	0%
GEOL	597		962		1,009		874		-13%	0%
PHYS	776		808		562		812		44%	0%
English	5,934	165	5,764	175	5,038	197	5,486	191	9%	-3%
CRTW	1,218		1,338		813		1,143		41%	0%
ENGE	47	12	43	4	65	20	72	8	11%	-60%
ENGL	1,167	123	1,116	129	999	138	1,122	168	12%	22%
WRIT	3,502	30	3,267	42	3,161	39	3,149	15	0%	-62%
History	3,516	152	2,722	97	2,716	160	2,508	173	-8%	8%
HIST	3,414	108	2,535	69	2,518	144	2,377	141	-6%	-2%
PEAC	72		141		135		90		-33%	0%
SCST	30	44	46	28	63	16	41	32	-35%	100%
Human Nutrition	1,454	132	1,901	165	2,169	198	1,924	177	-11%	-11%
GEOG	306	12	489	12	699	6	681	15	-3%	150%
NUTR	1,148	120	1,412	153	1,470	192	1,243	162	-15%	-16%
Liberal Arts		57		48		48		27	0%	-44%
LART		57		48		48		27	0%	-44%
Mass Communication	1,429		1,284		1,265		1,220		-4%	0%
IMCO	117		51		69		51		-26%	0%
MCOM	1,312		1,233		1,196		1,169		-2%	0%
Mathematics	4,867	34	5,089	39	4,808	50	4,799	38	0%	-24%
CTQR	2,493		2,325		2,247				-100%	0%
MAED	86	4	59		59	11	65	8	10%	-27%
MATH	2,288	30	2,705	39	2,502	39	4,734	30	89%	-23%
Modern Languages	3,834	37	3,696	45	3,490	55	3,124	25	-10%	-55%
CHIN	56		32		36		36		0%	0%
FREN	608	3	545		510		546		7%	0%
GERM	251		265		226		166		-27%	0%
ITAL	136		172		136		88		-35%	0%
JAPN	72								0%	0%
LATN	64		88						0%	0%
MLAN	4	4	24		72	4	12	4	-83%	0%
SPAN	2,643	30	2,570	45	2,510	51	2,276	21	-9%	-59%
Philosophy and Religious Studies	1,371		1,164	9	1,293	3	1,362	12	5%	300%
PHIL	570		576	9	576	3	588	12	2%	300%
RELG	801		588		717		774		8%	0%
Political Science	2,250	12	2,185	12	2,161	3	1,849	6	-14%	100%
AAMS	108		123		141		174	3	23%	100%
PLSC	2,142	12	2,062	12	2,020	3	1,675	3	-17%	0%
Psychology	3,151	463	3,133	434	3,305	439	3,365	357	2%	-19%
PSYC	3,151	463	3,133	434	3,305	439	3,365	357	2%	-19%
Social Work	664	354	729	753	721	789	793	960	10%	22%
SCWK	664	354	729	753	721	789	793	960	10%	22%

Department	2006F		2007F		2008F		2009F		09 TO 10 % DIFF.	
	UG	G	UG	G	UG	G	UG	G	UG	G
Sociology and Anthropology	3,959	21	3,483	29	3,462	3	3,442		-1%	-100%
ANTH	1,248		1,269		1,215		1,185		-2%	0%
GRNT	117		11		57		96		68%	0%
SOCL	2,489	21	2,119	29	2,115	3	2,071		-2%	-100%
WMST	105		84		75		90		20%	0%
Speech	807		678		976		765		-22%	0%
SPCH	807		678		976		765		-22%	0%
Business Administration	11,659	1,380	11,049	1,440	11,812	1,386	11,526	1,320	-2%	-5%
Accounting, Finance, & Economics	4,059	465	3,792	456	4,089	348	3,939	459	-4%	32%
ACCT	1,314	159	1,506	237	1,485	156	1,365	219	-8%	40%
ECON	1,923	66	1,635	63	1,815	42	1,674	48	-8%	14%
FINC	822	240	651	156	789	150	900	192	14%	28%
Com. Sci. & Quan. Meth.	2,470	81	2,379	126	2,659	120	2,562	150	-4%	25%
CSCI	1,603	30	1,578	18	1,837	12	1,664	27	-9%	125%
INFD							58		100%	0%
QMTM	867	51	801	108	822	108	840	123	2%	14%
Management and Marketing	5,130	834	4,878	858	5,064	918	5,025	711	-1%	-23%
BADM	1,326	336	1,269	432	1,245	378	1,236	171	-1%	-55%
ENTR	138		123		138		126		-9%	0%
HCMT	228		306		342		375		10%	0%
MGMT	2,286	423	2,103	381	2,289	444	2,373	459	4%	3%
MKTG	1,152	75	1,077	45	1,050	96	915	81	-13%	-16%
Education	8,850	2,896	8,658	3,521	8,865	2,875	9,696	3,321	9%	16%
Center for Pedagogy	3,560	978	3,702	1,120	3,521	1,152	3,665	1,475	4%	28%
EDLD		462		543		543		816	0%	50%
EDUC	3,560	516	3,702	577	3,521	609	3,665	659	4%	8%
Curriculum and Instruction	2,589	715	1,936	722	2,028	685	2,258	1,035	11%	51%
CSDV		327		303		315		444	0%	41%
ECED	689		548		587		744	144	27%	100%
EDCI	229	201	227	114	212	99	260	90	23%	-9%
ELEM	541		389		328		305		-7%	0%
FACS	351		170		225		225		0%	0%
READ	527	42	411	153	439	81	402	237	-8%	193%
SCED	54	12	57	30	27	15	33	6	22%	-60%
SPED	198	132	134	120	210	165	289	114	38%	-31%
VCED		1		2		10			0%	-100%
PE, Sport & Human Performance	2,331	174	2,653	167	2,890	237	3,187	259	10%	9%
ATRN					235	3	373	9	59%	200%
EXSC					54		186		244%	0%
HLTH	644	63	662	15	652	45	656	24	1%	-47%
PHED	1,687	111	1,991	152	1,949	189	1,972	226	1%	20%
Sport Management	334		364		426		586		38%	0%
SPMA	334		364		426		586		38%	0%
Winthrop Professional Development	36	1,029	3	1,512		801		552	0%	-31%
WPDC	36	1,029	3	1,512		801		552	0%	-31%

Department	2006F		2007F		2008F		2009F		09 TO 10 % DIFF.	
	UG	G	UG	G	UG	G	UG	G	UG	G
Visual and Performing Arts	10,066	412	10,081	455	9,764	470	9,449	522	-3%	11%
Design	1,322		1,467		1,844		1,839		0%	0%
INDS	930		844		756		617		-18%	0%
VCOM	392		623		1,088		1,222		12%	0%
Fine Arts	4,232	244	4,393	213	3,411	203	3,559	256	4%	26%
ARTA		156		126		91		105	0%	15%
ARTE	151	37	153	19	133	43	164	16	23%	-63%
ARTH	1,317	18	1,369	15	1,284	15	1,251	45	-3%	200%
ARTS	2,368	33	2,401	50	1,566	48	1,695	90	8%	88%
ARTT	396		470		392		416		6%	0%
VPAS				3	36	6	33		-8%	-100%
Music	2,448	168	2,304	242	2,348	267	2,249	266	-4%	0%
MUSA	946	74	902	107	934	98	928	106	-1%	8%
MUST	1,502	94	1,402	135	1,414	169	1,321	160	-7%	-5%
Theatre and Dance	2,064		1,917		2,161		1,802		-17%	0%
DANA	405		339		408		311		-24%	0%
DANT	376		308		375		313		-17%	0%
DCED	32		46		99		65		-34%	0%
THED	80		57		52		31		-40%	0%
THRA	725		732		750		527		-30%	0%
THRT	446		435		477		555		16%	0%
University College	2,705		2,610		2,801		3,000		7%	0%
General Education	1,473								0%	0%
GNED	1,473								0%	0%
International Area Studies	12								0%	0%
INAS	12								0%	0%
Honors	40		28		37		21		-43%	0%
HONR	40		28		37		21		-43%	0%
University College	1,180		2,582		2,764		2,979		8%	0%
ACAD	1,180		1,070		1,129		1,062		-6%	0%
HMXP			1,512		1,626		1,902		17%	0%
LEAD					9		15		67%	0%
Grand Total	73,391	6,239	71,225	7,345	71,927	6,820	71,243	7,266	-1%	7%

NOTE: Credit Hours are by Course Level

CREDIT HOUR PRODUCTION BY DEPARTMENT SPRING 2006-2009

Department	2006S		2007S		2008S		2009S		2010S		09 TO 10 % DIFF.	
	UG	G	UG	G	UG	G	UG	G	UG	G	UG	G
Arts and Sciences	34,801	1,089	34,897	1,402	33,901	1,772	34,212	1,902	33,746	2,004	-1%	5%
Biology	4,080	153	3,889	132	3,757	109	3,681	106	3,627	119	-1%	12%
BIOL	4,080	153	3,889	132	3,757	109	3,681	106	3,627	119	-1%	12%
Chemistry	2,714	6	2,417	15	2,887	30	3,163	21	3,185		1%	-100%
CHEM	1,164	6	1,069	15	1,259	18	1,550	21	1,506		-3%	-100%
ENVS	114		99		108	12	111		102			0%
GEOL	686		490		711		644		881			0%
PHYS	750		759		809		858		696			0%
English	3,743	141	3,863	132	3,838	162	4,094	186	4,370	204	7%	10%
CRTW	1,095		1,371		1,530		1,806		2,046			0%
ENGE	39	12	42	15	66	15	69	15	60	9	-13%	-40%
ENGL	1,441	99	1,416	93	1,206	129	1,248	132	1,167	153	-6%	16%
WRIT	1,168	30	1,034	24	1,036	18	971	39	1,097	42	13%	8%
History	2,502	99	2,706	150	2,219	93	2,163	147	2,661	96	23%	-35%
HIST	2,502	99	2,706	150	2,219	93	2,151	147	2,661	96	24%	-35%
PEAC							12					
Human Nutrition	1,478	185	1,811	149	1,905	141	1,922	188	1,704	226	-11%	20%
GEOG	402		516		510		636		531			0%
NUTR	1,076	185	1,295	149	1,395	141	1,286	188	1,173	226	-9%	20%
Liberal Arts		66		45		3		33		51	0%	
LART		66		45		3		33		51	0%	
Mass Communication	1,328		1,357		1,380		1,335		1,198			0%
IMCO	54		39		115		108		86			0%
MCOM	1,274		1,318		1,265		1,227		1,112			0%
Mathematics	3,408	3	3,572	9	3,771	12	3,740	9	3,725	78	0%	767%
CTQR	1,011		1,116		1,185		1,002					0%
MAED	60	3	74	6	23	6	47	6	59	69	26%	1050%
MATH	2,337		2,382	3	2,563	6	2,691	3	3,666	9		200%
Modern Languages	3,880	48	3,570	30	3,086	57	2,917	33	2,751	33	-6%	0%
CHIN	64		44		28		24		20			0%
FREN	677	6	585		471	3	553		514		-7%	0%
GERM	165		233		203		181		160			0%
ITAL	84		64		108		48		40			0%
JAPN	72		60									0%
LATN	40		32									0%
MLAN							12					
SPAN	2,778	42	2,552	30	2,276	54	2,099	33	2,017	33	-4%	0%
Philosophy and Religious Studies	1,326	9	1,353	6	1,071		1,110	6	1,020	3	-8%	-50%
PHIL	627	6	729		519		510		462		-9%	0%
RELG	699	3	624	6	552		600	6	558	3	-7%	-50%
Political Science	2,255	9	2,067	18	1,888	7	1,926	6	1,772	18	-8%	200%
AAMS	117		105		90		162		114			0%
PLSC	2,138	9	1,962	18	1,798	7	1,764	6	1,658	18	-6%	200%
Psychology	2,729	358	2,819	326	3,080	456	2,994	465	2,967	333	-1%	-28%
PSYC	2,729	358	2,819	326	3,080	456	2,994	465	2,967	333	-1%	-28%
Social Work	884	6	805	384	740	687	726	693	586	840	-19%	21%
CMVS	45		45		60							0%
SCWK	839	6	760	384	680	687	726	693	586	840	-19%	21%
Sociology and Anthropology	3,716	6	3,903	6	3,347	15	3,355	9	3,177	3	-5%	-67%
ANTH	1,358		1,339		1,314		1,233		1,251			0%
GRNT	156		159		84	3	102	3	33			-100%
SOCL	2,172	3	2,402	6	1,919	12	2,014	6	1,890	3	-6%	-50%
WMST	30	3	3		30		6		3		-50%	0%
Speech	758		765		932		1,086		1,003			0%
SPCH	758		765		932		1,086		1,003			0%

Department	2006S		2007S		2008S		2009S		2010S		09 TO 10 % DIFF.	
	UG	G	UG	G	UG	G	UG	G	UG	G	UG	G
Business Administration	11,192	1,404	11,381	1,371	11,118	1,548	11,674	1,371	12,029	1,401	3%	2%
Accounting, Finance, & Economics	3,888	435	3,948	360	3,807	450	4,038	435	4,189	522	4%	20%
ACCT	1,422	252	1,380	213	1,299	300	1,455	261	1,545	288	6%	10%
ECON	1,707	51	1,848	42	1,683	33	1,791	54	1,732	87	-3%	61%
FINC	759	132	720	105	825	117	792	120	912	147	15%	23%
Com. Sci. & Quan. Meth.	2,360	63	2,477	117	2,694	102	2,661	78	2,692	132	1%	69%
CSCI	1,475	18	1,553	15	1,755	9	1,646	6	1,665	15	1%	150%
DIFD									51			
INFD					114		172		154			
QMTM	885	45	924	102	825	93	843	72	822	117	-2%	63%
Management and Marketing	4,944	906	4,956	894	4,617	996	4,975	858	5,148	747	3%	-13%
BADM	957	306	1,020	375	1,017	438	1,093	324	888	153	-19%	-53%
ENTR	162		177		165		237		195			0%
HCMT	168		219		246		318		321			0%
MGMT	2,478	474	2,409	429	2,187	459	2,301	429	2,562	477	11%	11%
MKTG	1,179	126	1,131	90	1,002	99	1,026	105	1,182	117	15%	11%
Education	8,954	2,196	8,640	2,097	8,602	2,400	8,871	2,932	9,097	3,456	3%	18%
Center for Pedagogy	3,623	990	3,532	876	3,425	1,080	3,498	1,303	3,591	1,644	3%	26%
EDLD		423		444		546		489		807	0%	
EDUC	3,623	567	3,532	432	3,425	534	3,498	814	3,591	837	3%	3%
Curriculum and Instruction	2,414	729	2,400	804	2,050	729	2,004	813	1,979	1,191	-1%	46%
CSDV		348		339		327		306		558	0%	
ECED	291		360	21	244		217	60	239	90		50%
EDCI	333	120	306	114	357	57	228	60	330	171	45%	185%
ELEM	324		364	24	306		321	51	294	21		-59%
FACS	564	3	521	3	345		414		268		-35%	0%
READ	665	156	663	111	603	222	602	249	620	201	3%	-19%
SCED										3		
SPED	237	99	186	192	195	123	222	87	216	51	-3%	-41%
TESL										87		
TFEL							-					
VCED		3							12	9	100%	
PE, Sport & Human Performance	2,698	123	2,478	258	2,791	162	3,064	303	3,207	165	5%	-46%
ATRN							252		301			
EXSC									40			
HLTH	674	27	580	111	481	48	524	9	546	36	4%	300%
PHED	2,024	96	1,898	147	2,310	114	2,288	294	2,320	129	1%	-56%
Sport Management	219		230		336		305		320			0%
SPMA	219		230		336		305		320			0%
Winthrop Professional Development		354		159		429		513		456	0%	
WPDC		354		159		429		513		456	0%	
Visual and Performing Arts	9,331	379	9,784	405	9,458	493	8,692	367	8,804	504	1%	37%
Design	1,317		1,512		1,383		1,508		1,461			0%
INDS	807		996		891		596		503			0%
VCOM	510		516		492		912		958			0%
Fine Arts	3,854	201	3,903	241	3,693	234	3,277	161	3,146	242	-4%	50%
ARTA		123		154		112		77		98	0%	
ARTE	156	6	165	36	147	27	144	27	180	24	25%	-11%
ARTH	1,182	6	1,347	9	1,284	39	1,233	39	1,317	21	7%	-46%
ARTS	2,177	63	2,103	42	2,013	56	1,618	18	1,504	99	-7%	450%
ARTT	339		288		249		213		130			0%
VPAS		3					69		15		-78%	
Music	2,276	178	2,362	164	2,182	259	2,158	206	2,133	262	-1%	27%
MUSA	868	66	916	61	835	89	809	83	793	82	-2%	-1%
MUST	1,408	112	1,446	103	1,347	170	1,349	123	1,340	180	-1%	46%
Theatre and Dance	1,884		2,007		2,200		1,749		2,064			0%
DANA	244		287		292		258		256			0%
DANT	400		442		453		451		360			0%
DCED			74		76		60		69			0%
THED	55		45		49		80		62			0%
THRA	700		664		752		527		684			0%
THRT	485		495		578		373		633			0%

Department	2006S		2007S		2008S		2009S		2010S		09 TO 10 % DIFF.	
	UG	G	UG	G	UG	G	UG	G	UG	G	UG	G
University College	2,600		3,120		3,279		3,017		2,649			0%
General Education	2,508		3,030									0%
GNED	2,508		3,030									0%
International Area Studies	21		24		102							0%
INAS	21		24		102							0%
Honors	49		41		83		62		73			0%
HONR	49		41		83		62		73			0%
University College	22		25		3,094		2,955		2,576			0%
ACAD	22		25		114		87		73			0%
HMXP					2,931		2,811		2,481			
LEAD					49		57		22			
Grand Total	66,878	5,068	67,822	5,275	66,358	6,213	66,466	6,572	66,325	7,365	0%	12%

CREDIT HOUR PRODUCTION BY DEPARTMENT SUMMER 2006-2010

Department	2006M		2007M		2008M		2009M		2010M		09 TO 10 % DIFF.	
	UG	G	UG	G	UG	G	UG	G	UG	G	UG	G
Arts and Sciences	3,703	777	4,008	755	4,275	769	3,959	951	4,405	861	11%	-9%
Biology	450	16	422	19	446		343	18	384	12	12%	-33%
BIOL	348	16	341	19	380		289	18	384	12	33%	-33%
SCIE	102		81		66		54					0%
Chemistry	428	45	431	27	319	15	386	39	391	-	1%	-100%
CHEM	328		332		142		130		99	-		0%
ENVS			3						1			0%
GEOL	45						48		42			
PHYS	55	45	96	27	177	15	208	39	249		20%	-100%
English	436	153	513	138	585	237	681	207	609	213	-11%	3%
CRTW	51		180		270		375		294			0%
ENGL	225	48	153	21	132	81	135	99	126	60	-7%	-39%
WRIT	160	105	180	117	183	156	171	108	189	153	11%	42%
History	306	39	222	42	207	57	219	66	178	132	-19%	100%
HIST	306	39	222	42	204	57	219	66	178	96	-19%	45%
PEAC					3					3		
SCST										33		
Human Nutrition	289	68	265	46	389	64	281	90	329	60	17%	-33%
GEOG	51				144		126		177			
NUTR	238	68	265	46	245	64	155	90	152	60	-2%	-33%
Liberal Arts								3				
LART								3				
Mass Communication	49	48	92		55		62		56		-10%	0%
MCOM	49	48	92		55		62		56		-10%	0%
Mathematics	453	18	513	42	780		627	72	721	72	15%	0%
CTQR	132		171		186		138					0%
MAED		18		24				72		69	0%	
MATH	321		342	18	594		489		721	3		100%
Modern Languages	419	42	337	75	296	108	290	114	282	24	-3%	-79%
FREN	48		64		56		56		32			0%
MLAN	102	12	34		54	42	18	84	30		67%	-100%
SPAN	269	30	239	75	186	66	216	30	220	24	2%	-20%
Philosophy and Religious Studies	78		60		18		39		24			0%
PHIL	33		60		18		39		24			0%
RELG	45											
Political Science	108	6	168		171	6	225		273	9	21%	100%
AAMS					21		33					
PLSC	108	6	168		150	6	192		273	9	42%	100%
Psychology	207	333	346	249	348	159	293	108	343	60	17%	-44%
PSYC	207	333	346	249	348	159	293	108	343	60	17%	-44%
Social Work	24	6	21	117	63	123	42	234	72	279	71%	19%
CMVS	15											
SCWK	9	6	21	117	63	123	42	234	72	279	71%	19%
Sociology and Anthropology	300	3	429		496		399		570		43%	0%
ANTH	57		87		181		141		237			0%
GRNT	21		30				3					0%
SOCL	222	3	312		315		255		333		31%	0%
Speech	156		189		102		72		173			0%
SPCH	156		189		102		72		173			0%

Department	2006M		2007M		2008M		2009M		2010M		09 TO 10 % DIFF.	
	UG	G	UG	G	UG	G	UG	G	UG	G	UG	G
Business Administration	908	567	948	672	1,258	714	1,290	747	1,561	738	21%	-1%
Accounting, Finance, & Economics	291	225	309	267	498	282	612	309	723	270	18%	-13%
ACCT	93	99	111	132	246	114	312	138	339	135	9%	-2%
ECON	75	69	111	90	141	84	156	96	231	48	48%	-50%
FINC	123	57	87	45	111	84	144	75	153	87	6%	16%
Com. Sci. & Quan. Meth.	106	51	159	48	181	84	218	39	176	60	-19%	54%
CSCI	19	12	48		52	12	47		38		-18%	0%
QMTH	87	39	111	48	129	72	171	39	138	60	-19%	54%
Management and Marketing	511	291	480	357	579	348	460	399	662	408	44%	2%
BADM	103	111	72	162	105	135	46	108	113	96	146%	-11%
ENTR	6		3		3				24			0%
HCMT	27		33		48		57		90			0%
MGMT	240	180	237	195	318	213	288	291	384	312	33%	7%
MKTG	135		135		105		69		51			0%
Education	758	1,887	566	1,626	494	1,920	613	2,277	601	2,034	-2%	-11%
Center for Pedagogy	60	666	97	684	80	762	127	1,032	100	837	-21%	-19%
EDLD		108		210		192		231		195		0%
EDUC	60	558	97	474	80	570	127	801	100	642	-21%	-20%
Curriculum and Instruction	389	663	274	678	213	831	178	948	159	849	-11%	-10%
CSDV		366		381		387		435		477		0%
ECED	78	27	51	24	30			102		105	0%	3%
EDCI						3						
ELEM	33			30		57		90		90		
FACS	18		16		21		12		18			0%
READ	256	198	207	159	162	222	166	273	141	177	-15%	-35%
SPED		69		84		162		48				0%
VCED	4	3										0%
PE, Sport & Human Performance	231	3	141	27	141	15	197	63	144	24	-27%	-62%
ATRNR							2		6			
HLTH	150	3	81	18	96	6	96	6	102	12	6%	100%
PHED	81		60	9	45	9	99	57	36	12		-79%
Sport Management	78		54		60		111		198			0%
SPMA	78		54		60		111		198			0%
Winthrop Professional Development		555		237		312		234		324	0%	
WPDC		555		237		312		234		324	0%	
Visual and Performing Arts	460	496	538	295	584	483	676	287	635	238	-6%	-17%
Design	34		42				-		-			0%
INDS	34		42				-		-			0%
VCOM							-		-			
Fine Arts	306	416	301	247	303	408	213	197	294	128	38%	-35%
ARTA		68		88		60		44		56		0%
ARTE	33	36	39	18	45	39	54		108	54	100%	100%
ARTH	96	39	84	30	114	6	63	9	66	6	5%	-33%
ARTS	177	9	163	9	144		78	9	120	12	54%	33%
ARTT			15				18					0%
VPAS		264		102		303		135				0%
Music	87	80	135	48	164	72	247	90	320	110	30%	22%
MUSA	3	11	5	3	14	12	22	12	11	14	-50%	17%
MUST	84	69	130	45	150	60	225	78	309	96	37%	23%
Theatre and Dance	33		60		117	3	216		21			0%
DANT	15		3		36	3	105		21			0%
DCED			3									0%
THRA	3											
THRT	15		54		81		111					0%

Department	2006M		2007M		2008M		2009M		2010M		09 TO 10 % DIFF.	
	UG	G	UG	G	UG	G	UG	G	UG	G	UG	G
University College	66		132		186		171		243			0%
General Education	66		132									0%
GNED	66		132									0%
Honors					3		6		75			
HONR					3		6					
University College					183		165		168			
HMXP					183		165		168			
MCNR									75			
Grand Total	5,895	3,727	6,192	3,348	6,797	3,886	6,709	4,262	7,445	3,871	11%	-9%

Average Number of Student Credit Hours Taught by Full-Time Teaching Faculty*

(Performance Funding Indicator 3B)

COLLEGE/DEPARTMENT	FALL 2005		FALL 2006		FALL 2007		FALL 2008		FALL 2009		5-YEAR AVERAGE	
	headcount	avg. hrs.	headcount	avg. hrs.	headcount	avg. hrs.	headcount	avg. hrs.	headcount	avg. hrs.	headcount	avg. hrs.
ARTS & SCIENCES	132	204	132	214	131	197	125	190	137	202	131	201
Biology	14	136	14	153	14	140	15	139	16	134	15	141
Chemistry and Physics	15	145	12	152	15	133	14	152	16	151	14	147
English	21	192	20	189	19	175	18	166	17	195	19	183
History	10	326	10	306	7	274	7	314	8	292	8	302
Human Nutrition	6	167	6	155	6	213	5	223	5	174	6	186
Mass Communication	7	176	7	181	7	162	7	153	9	151	7	164
Mathematics	12	281	13	328	13	303	11	273	12	284	12	294
Modern and Classical Lang.	5	136	6	164	7	134	7	152	7	186	6	155
Philosophy & Religious Studies	5	274	5	300	5	265	5	264	5	296	5	280
Political Science	8	215	8	254	8	244	8	190	7	213	8	223
Psychology	13	202	13	212	13	195	11	179	14	214	13	200
Social Work	6	134	8	96	7	152	7	105	11	163	8	130
Sociology	7	302	8	306	8	249	8	264	8	298	8	284
Speech	3	197	2	236	2	248	2	252	2	179	2	222
BUSINESS ADMINISTRATION	43	261	41	259	35	256	31	272	41	272	38	264
Accounting, Finance & Econ.	17	260	17	262	13	279	10	312	17	264	15	275
Computer Science & Quan. Meth.	10	277	9	270	9	271	9	263	9	283	9	273
Management & Marketing	16	251	15	248	13	222	12	244	15	275	14	248
EDUCATION	48	178	46	174	40	164	38	175	43	202	43	178
Center for Pedagogy	16	185	16	200	15	194	16	189	13	220	15	161
Counseling and Leadership	-	-	-	-	-	-	-	-	-	-	-	-
Curriculum and Instruction	21	161	19	162	17	129	15	122	19	163	18	148
Health and Physical Education	11	199	11	155	8	180	7	257	11	249	10	208
VISUAL & PERFORMING ARTS	41	133	46	125	44	114	41	104	51	123	45	119
Design **									8	142		
Fine Arts **	21	158	21	149	19	143	18	102	15	129	19	136
Music	13	91	16	93	16	92	15	92	17	92	15	92
Theatre And Dance	7	133	9	123	9	90	8	132	11	147	9	125
TOTAL	264	197	265	198	250	185	235	184	272	193	257	192

*NOTE: For this performance indicator full-time teaching faculty is defined as full-time, unclassified faculty at the rank of instructor, assistant professor, associate professor, professor at institutions, who teach at least three credit hours, measured in the fall semester. Unclassified employees who hold positions above department chair, such as deans, vice presidents, and presidents are excluded.

**AVERAGE CLASS SIZE OF LECTURE/LAB
BY DISCIPLINE AND LEVEL**

Program Code	Discipline	2005		2006		2007		2008		2009	
		Lower Div.	Upper Div.	Lower Div.	Upper Div.	Lower Div.	Upper Div.	Lower Div.	Upper Div.	Lower Div.	Upper Div.
0300	Natural Resources and Conservation	19.00	0.00	0.00	0.00	24.00	2.00	18.00	0.00	21.00	0.00
0500	Area, Ethnic, Cultural and Gender Studies	0.00	15.50	0.00	9.00	0.00	13.67	0.00	15.67	0.00	11.80
0900	Communications	17.89	17.33	20.00	15.82	26.25	15.43	26.00	16.10	21.40	13.35
1100	Computer and Information Sciences	26.06	12.86	25.05	7.00	23.69	7.55	21.78	8.67	22.06	6.67
1300	Education	21.63	18.38	21.12	18.70	20.47	16.70	20.54	17.14	22.71	18.51
1600	Foreign Languages and Literatures	17.02	7.45	17.00	6.64	17.50	6.13	16.47	7.33	19.85	6.29
1900	Home Economics	27.56	15.27	21.33	11.71	21.36	21.60	20.42	18.63	20.63	19.14
2300	English Language and Literatures	18.97	11.63	20.22	11.52	19.48	12.33	18.96	13.67	20.75	17.78
2400	Liberal Arts	19.65	0.00	16.93	0.00	20.16	0.00	19.00	0.00	21.42	0.00
2600	Biological Sciences/Life Sciences	26.47	20.65	22.88	20.25	23.76	21.26	23.24	19.17	25.44	15.77
2700	Mathematics	35.26	9.64	37.86	10.55	35.06	10.50	35.75	11.08	33.69	7.73
3000	Multi/Interdisciplinary Studies	17.00	16.00	13.00	9.50	11.00	6.40	12.50	11.25	0.00	15.50
3100	Sport Management	31.00	12.33	18.25	6.00	25.75	8.50	24.00	17.33	27.40	20.25
3800	Philosophy and Religion	34.33	27.11	31.11	29.50	29.67	17.75	33.57	24.63	29.25	28.43
4000	Physical Sciences	21.67	17.00	22.35	16.80	20.22	13.48	21.14	14.89	20.25	16.50
4200	Psychology	42.42	21.96	38.56	23.65	40.33	21.10	46.67	21.76	46.27	20.45
4400	Public Administration and Services	22.25	10.33	18.67	10.86	16.25	15.00	23.33	11.50	24.00	12.15
4500	Social Sciences	37.83	19.06	45.87	15.43	47.55	15.21	44.48	15.18	47.33	18.53
5000	Visual and Performing Arts	21.95	11.69	20.21	11.19	18.98	10.66	17.84	10.68	18.14	11.65
5100	Communication Disorders, General	*	*	21.75	19.00	22.14	14.20	21.23	15.00	20.91	14.25
5200	Business Management and Admin.	36.87	28.38	38.26	28.50	38.51	26.60	38.37	29.55	37.08	30.83
5400	History	38.39	20.11	35.12	18.33	32.18	13.69	35.11	18.71	39.33	21.18
	University Total Average	25.71	15.64	24.07	14.55	24.30	13.70	24.47	15.14	24.50	14.85

* New Program

**GRADUATE DEGREES CONFERRED
BY DEGREE PROGRAM & SEMESTER 2005 - 2009**

DEGREE PROGRAM	2005	2006	2006	2006	2007	2007	2007	2008	2008	2008	2009	2009
	FALL	SPR	SUM	FALL	SPR	SUM	FALL	SPR	SUM	FALL	SPR	SUM
ARTS & SCIENCES	16	31	2	12	30	7	14	56	6	13	48	18
M.S. Biology	5	2	1	3	5	0	2	0	0	2	1	0
M.A. English	1	3	0	1	3	1	1	3	0	3	5	1
Certificate Gerontology	0	0	0		3	0	2	5	1	1	1	0
M.S. Human Nutrition	4	3	1	2	1	1	2	0	1	3	5	1
M.A. History	0	1	0	1	2	1	3	4	1	0	2	0
M.L.A. Liberal Arts	3	4	0	3	0	0	2	2	0	2	0	0
MMTH Mathematics	2	0	0	0	0	0	0	0	0	0	0	0
M.S. School Psychology	0	8	0	1	8	0	0	11	0	0	7	2
S.S.P. School Psychology	0	9	0	0	7	1	2	9	0	0	11	0
MSW Social Work								21	0	0	14	12
M.A. Spanish	1	1	0	1	1	3	0	1	3	2	2	2
BUSINESS ADMINISTRATION	29	46	12	36	34	20	20	37	14	29	39	20
Certificate Business Administration	0						0	0	0	0	0	0
M.B.A. Business Administration	26	36	12	34	20	19	20	23	11	27	27	19
Executive MBA	1	8	0	1	12	0	0	14	1	2	12	1
P.B. Cert. Software Project Management	0	1	0	0	1	0	0	0	0	0	0	0
M.S. Software Engineering	2	1	0	1	1	1	0	0	2	0	0	0
EDUCATION	33	67	16	23	72	11	30	72	21	25	65	21
M.A.T. Business Education	0	0	0	0	0	0	0	0	0	0	0	0
M. Ed. Counseling & Development	0	17	0	0	21	0	0	15	0	0	20	0
M.Ed. Curriculum and Instruction	12	3	0	9	4	2	8	3	1	9	6	1
M.Ed. Educational Leadership	1	25	7	3	10	3	0	39	9	0	10	0
M. Ed. Elementary Education							0	0	0	0	0	0
M. Ed. Middle Level Education	12	1	0	1	12	0	6	3	3	4	0	2
M.A.T. Art Education (K-12)	0	0	0	0	0	0	0	0	0	0	0	0
M.A.T. Music Education (K-12)	0	0	0	0	0	0	0	0	0	0	0	0
M.A.T. Physical Education (K-12)	0	0	0	0	0	0	0	0	0	0	0	0
M.S. Physical Education	0	0	1	0	8	2	1	2	1	2	5	1
M. Ed. Reading	0	5	8	2	2	3	3	1	4	6	1	1
M. Ed. Secondary Education								0	0	0	0	0
M.A.T. Secondary Education								0	0	0	0	0
M. Ed. Special Education	6	3	0	3	2	0	5	1	1	1	3	14
M.A.T. Teacher Education- Art	0	3	0	0	1	0	0	0	0	1	4	0
M.A.T. Teacher Education- Biology				0	0	0	1	0	0	0	1	0
M.A.T. Teacher Education- Business				0	0	0	0	0	0	0	2	0
M.A.T. Teacher Education- Music								1	0	0	2	0
M.A.T. Teacher Education- PE	0	1	0	1	3	0	1	0	0	1	1	1
M.A.T. Secondary Education-Biology				0	1		1	0	0	0	0	0
M.A.T. Secondary Education-Business	1	2	0	2	0	1	0	1	0	0	0	0
M.A.T. Secondary Education-English	1	2	0	2	1	0	2	1	0	0	5	0
M.A.T. Secondary Education-Fam&Cons S	0	1	0	0	0	0	0	0	1	0	1	0
M.A.T. Secondary Education-French	0	2	0	0	0	0	1	0	0	0	0	0
M.A.T. Secondary Education-Math				0	1	0	0	0	0	0	2	0
M.A.T. Secondary Education-Soc Stud	0	2	0	0	6	0	1	5	1	1	2	0
M.A.T. Secondary Education-SPAN	0	0	0	0	0	0	0	0	0	0	0	1
VISUAL & PERFORMING ARTS	6	11	2	1	7	3	5	5	4	7	14	3
M.F.A Art and Design	0	3	0	0	1	0	1	0	0	1	0	0
M.A. Art Administration	4	1	1	0	0	0	1	0	2	0	0	1
M.A. Art Education	1	1	0	0	0	1	0	1	0	3	3	0
M.M. Conducting	0	3	0	1	0	0	1	1	1	2	2	1
M.M.E. Music Education	0	2	1	0	0	2	0	0	1	0	2	1
M.M. Music Performance	1	1	0	0	6	0	2	3	0	1	7	0
TOTAL	84	155	32	72	143	41	69	170	45	74	166	62

**UNDERGRADUATE DEGREES CONFERRED
BY DEGREE PROGRAM & SEMESTER
2005 - 2009**

DEGREE PROGRAM	2005	2006	2006	2006	2007	2007	2007	2008	2008	2008	2009	2009
	FALL	SPR	SUM	FALL	SPR	SUM	FALL	SPR	SUM	FALL	SPR	SUM
ARTS & SCIENCES	144	279	30	119	266	30	122	273	26	109	236	32
B.S. Biology	12	28	1	18	34	2	15	36	1	25	38	1
B.S. Chemistry	0	7	0		9	1	0	8	0	1	14	0
B.A. English	16	19	2	9	19	0	4	14	2	4	21	3
B.A. Environmental Studies	1	3	1		2	1	0	3	0	0	0	0
B.S. Environmental Science	0	3	0	1	0	0	1	4	0	1	3	1
B.S. Human Nutrition	2	11	0	4	1	0	6	6	0	4	12	1
B.S. Integrated Marketing Comm.	11	19	0	17	15	2	14	22	0	0	0	1
B.A. History	15	29	1	12	15	5	10	22	4	11	23	4
B.A. Mass Communication	10	21	3	12	26	2	14	23	2	12	16	2
B.A. Gen. Communication Disorders	4	16	1	2	14	1	1	17	1	2	13	2
B.A. Mathematics	2	5	0	1	2	0	2	6	0	1	4	0
B.S. Mathematics	1	3	0	0	2	1	0	2	0	1	1	0
B.S. Medical Technology	0		0	0	0	0	0	0	0	0	0	0
B.A. Modern Languages	3	9	2	0	9	2	2	11	1	0	2	0
B.A. Philosophy & Religion	1	5	2	0	10	0	4	5	0	2	1	1
B.A. Political Science	17	31	7	9	17	3	9	17	3	7	22	5
B.A. Psychology	23	38	3	16	55	10	14	40	10	19	39	6
B.S. Science Communication	0	0	0	0	0	0	2	1	0	0	1	0
B.S.W. Social Work	12	12	0	9	12	0	12	7	0	12	11	0
B.A. Sociology	14	20	7	9	24	0	12	29	2	7	15	5
BUSINESS ADMINISTRATION	82	112	26	109	141	9	86	128	18	106	137	15
B.S. Business Administration	69	92	18	78	110	5	70	90	18	75	98	14
B.A. Economics	0	1	0	2	4	1	2	5	0	0	3	0
B.S. Computer Science	7	6	1	1	6	1	0	5	0	5	8	0
B.S. Integrated Marketing				17	15	2	14	22	0	23	12	0
B.S. Sport Management	6	13	7	11	6	0	0	6	0	3	16	1
EDUCATION	64	130	18	59	130	9	61	97	3	50	108	5
B.S. Business Education							0	0	0	0	0	0
B.S. Early Childhood Education	9	30	0	4	31	3	15	27	1	9	34	0
B.S. Elementary Education	25	31	0	11	37	1	18	30	0	13	21	0
B.S. Family Consumer Sciences	11	24	8	21	22	4	16	13	0	11	20	2
B.S. Middle Level Education					2	1	1	4	0	1	5	1
B.S. Physical Education	9	20	3	7	22	0	7	14	2	11	8	1
B.S. Special Education	4	12	0	5	10	0	4	3	0	2	4	0
B.S. Sport Management	6	13	7	11	6	0	0	6	0	3	16	1
VISUAL & PERFORMING ARTS	43	96	7	37	108	11	32	111	5	22	89	8
B.A. Art	13	17	1	8	11	1	9	16	1	8	12	3
B.A. Art History	1	5	0	2	7	1	2	3	0	0	1	0
B.F.A. Art	14	41	4	13	42	3	10	48	2	4	37	0
B.A. Dance	6	10	0	5	10	0	3	11	1	1	11	1
B.A. Music	2	3	1	2	10	0	2	3	0	3	5	0
B.M.E. Music Education (Choral)	1	3	1	1	3	1	0	3	0	0	1	1
B.M.E. Music Education (Instrumental)	0	1	0		3	0	1	7	0	0	8	1
B.M. Music Performance	1	1	0	2	5	0	2	3	0	4	4	2
B.A. Theatre	5	15	0	4	17	5	3	17	1	2	10	0
TOTAL	333	617	81	324	645	59	301	609	52	287	570	60

**TOTAL FULL-TIME FACULTY HEADCOUNT
FALL 2005 - FALL 2009**

COLLEGE/DEPARTMENT	Fall 2005	Fall 2006	Fall 2007	Fall 2008	Fall 2009
ARTS & SCIENCES	148	147	152	145	143
Biology	15	16	16	17	17
Chemistry and Physics	15	16	17	18	17
English	24	23	24	22	19
History	10	10	8	7	8
Human Nutrition	7	6	6	6	5
Mass Communication	7	7	7	7	9
Mathematics	12	13	14	12	12
Modern and Classical Languages	6	8	9	8	7
Philosophy and Religious Studies	5	5	5	5	5
Political Science	9	8	8	8	8
Psychology	19	16	17	14	14
Social Work	7	8	10	10	12
Sociology	9	9	10	8	8
Speech	3	2	1	3	2
BUSINESS ADMINISTRATION*	53	51	51	42	42
Accounting, Finance & Economics	20	18	18	15	17
Computer Science & Quant. Methods	11	10	11	10	9
Management and Marketing	22	23	22	17	16
EDUCATION*	48	56	54	45	44
Center for Pedagogy	16	20	19	15	13
Counseling and Leadership**					
Curriculum and Instruction	21	25	24	20	20
Health and Physical Education	11	11	11	10	11
VISUAL & PERFORMING ARTS	51	50	54	54	53
Fine Arts***	23	22	17	16	15
Design***			8	9	9
Music	17	18	18	18	18
Theatre and Dance	11	10	11	11	11
LIBRARY	13	12	13	13	11
ACADEMIC AFFAIRS	1	1	1	2	3
TOTAL	314	317	325	301	296

* In the College of Education and the College of Business Administration, faculty have moved between departments during the periods shown.

** Became a part of Curriculum & Instruction

*** Formerly Art & Design; split in 2007 to become Fine Arts and Design.

**COMPARISON OF FALL 2008 AND FALL 2009
TOTAL FULL-TIME FACULTY
TENURED, DOCTORATE, AND TERMINAL DEGREE**

COLLEGE/DEPARTMENT	TENURED				TERMINAL DEGREE				DOCTORATE DEGREE			
	2008		2009		2008		2009		2008		2009	
	#	% OF FT	#	% OF FT	#	% OF FT	#	% OF FT	#	% OF FT	#	% OF FT
ARTS & SCIENCES	85	58.6%	89	62.2%	122	84.1%	119	83.2%	125	86.2%	123	86.0%
Biology	11	64.7%	10	58.8%	15	88.2%	15	88.2%	15	88.2%	15	88.2%
Chemistry & Physics	8	44.4%	9	52.9%	17	94.4%	16	94.1%	17	94.4%	16	94.1%
English	10	45.5%	11	57.9%	17	77.3%	14	73.7%	16	72.7%	14	73.7%
History	7	100.0%	7	87.5%	7	100.0%	8	100.0%	7	100.0%	8	100.0%
Human Nutrition	3	50.0%	2	40.0%	3	50.0%	2	40.0%	3	50.0%	3	60.0%
Mass Communication	5	71.4%	6	66.7%	5	71.4%	6	66.7%	5	71.4%	6	66.7%
Mathematics	8	66.7%	8	66.7%	11	91.7%	10	83.3%	11	91.7%	10	83.3%
Modern & Classical Lang.	4	50.0%	5	71.4%	7	87.5%	6	85.7%	7	87.5%	6	85.7%
Phil. and Religious Studies	2	40.0%	2	40.0%	5	100.0%	5	100.0%	5	100.0%	5	100.0%
Political Science	7	87.5%	8	100.0%	8	100.0%	8	100.0%	8	100.0%	8	100.0%
Psychology	9	64.3%	10	71.4%	14	100.0%	14	100.0%	14	100.0%	14	100.0%
Social Work	4	40.0%	4	33.3%	6	60.0%	8	66.7%	8	80.0%	9	75.0%
Sociology	6	75.0%	6	75.0%	6	75.0%	6	75.0%	8	100.0%	8	100.0%
Speech	1	33.3%	1	50.0%	1	33.3%	1	50.0%	1	33.3%	1	50.0%
BUSINESS ADMIN.	22	52.4%	22	52.4%	36	85.7%	34	81.0%	36	85.7%	34	81.0%
Acc., Finance & Econ.	6	40.0%	6	35.3%	12	80.0%	12	70.6%	12	80.0%	13	76.5%
Comp. Sci. & Quant. Meth.	7	70.0%	7	77.8%	10	100.0%	9	100.0%	10	100.0%	8	88.9%
Management & Marketing	9	52.9%	9	56.3%	14	82.4%	13	81.3%	14	82.4%	13	81.3%
EDUCATION	18	40.0%	16	36.4%	37	82.2%	36	81.8%	38	84.4%	39	88.6%
Center for Pedagogy	7	46.7%	7	53.8%	14	93.3%	12	92.3%	14	93.3%	13	100.0%
Curriculum & Instruction	6	30.0%	4	20.0%	15	75.0%	15	75.0%	15	75.0%	16	80.0%
Health & Physical Edu.	5	50.0%	5	45.5%	8	80.0%	9	81.8%	9	90.0%	10	90.9%
VISUAL & PERF. ARTS	25	46.3%	28	52.8%	36	66.7%	36	67.9%	19	35.2%	20	37.7%
Design	3	33.3%	3	33.3%	4	44.4%	4	44.4%	0	0.0%	0	0.0%
Fine Arts	9	56.3%	9	60.0%	10	62.5%	10	66.7%	3	18.8%	4	26.7%
Music	9	50.0%	10	55.6%	14	77.8%	14	77.8%	14	77.8%	14	77.8%
Theatre and Dance	4	36.4%	6	54.5%	8	72.7%	8	72.7%	2	18.2%	2	18.2%
LIBRARY	10	76.9%	8	72.7%	5	38.5%	5	45.5%	2	15.4%	2	18.2%
OTHER	11	33.3%	11	34.4%	22	66.7%	21	65.6%	20	60.6%	20	62.5%
TOTAL	171	51.5%	174	53.5%	258	77.7%	251	77.2%	240	72.3%	238	73.2%

**COMPARISON OF FALL 2008 AND FALL 2009
FULL-TIME INSTRUCTIONAL FACULTY
TENURED, DOCTORATE, AND TERMINAL DEGREE**

COLLEGE/DEPARTMENT	TENURED				TERMINAL DEGREE				DOCTORATE DEGREE			
	2008		2009		2008		2009		2008		2009	
	#	% OF FT Instr	#	% OF FT Instr	#	% OF FT Instr	#	% OF FT Instr	#	% OF FT Instr	#	% OF FT Instr
ARTS & SCIENCES	84	58.7%	90	63.8%	121	84.6%	119	84.4%	124	86.7%	124	87.9%
Biology	11	68.8%	10	62.5%	15	93.8%	15	93.8%	15	93.8%	15	93.8%
Chemistry & Physics	8	44.4%	9	56.3%	17	94.4%	16	100.0%	17	94.4%	16	100.0%
English	10	45.5%	11	57.9%	17	77.3%	14	73.7%	16	72.7%	14	73.7%
History	7	100.0%	7	87.5%	7	100.0%	8	100.0%	7	100.0%	8	100.0%
Human Nutrition	3	50.0%	3	50.0%	3	50.0%	3	50.0%	3	50.0%	4	66.7%
Mass Communication	5	71.4%	6	66.7%	5	71.4%	6	66.7%	5	71.4%	6	66.7%
Mathematics	8	66.7%	8	66.7%	11	91.7%	10	83.3%	11	91.7%	10	83.3%
Modern & Classical Lang.	4	50.0%	5	71.4%	7	87.5%	6	85.7%	7	87.5%	6	85.7%
Phil. and Religious Studies	2	40.0%	2	40.0%	5	100.0%	5	100.0%	5	100.0%	5	100.0%
Political Science	7	87.5%	8	100.0%	8	100.0%	8	100.0%	8	100.0%	8	100.0%
Psychology	9	64.3%	10	71.4%	14	100.0%	14	100.0%	14	100.0%	14	100.0%
Social Work	4	40.0%	4	36.4%	6	60.0%	7	63.6%	8	80.0%	9	81.8%
Sociology	5	71.4%	6	75.0%	5	71.4%	6	75.0%	7	100.0%	8	100.0%
Speech	1	33.3%	1	50.0%	1	33.3%	1	50.0%	1	33.3%	1	50.0%
BUSINESS ADMIN.	22	53.7%	22	53.7%	36	87.8%	34	82.9%	36	87.8%	35	85.4%
Acc., Finance & Econ.	6	40.0%	6	35.3%	12	80.0%	12	70.6%	12	80.0%	13	76.5%
Comp. Sci. & Quant. Meth.	7	70.0%	7	77.8%	10	100.0%	9	100.0%	10	100.0%	9	100.0%
Management & Marketing	9	56.3%	9	60.0%	14	87.5%	13	86.7%	14	87.5%	13	86.7%
EDUCATION	18	40.0%	17	37.8%	37	82.2%	37	82.2%	38	84.4%	40	88.9%
Center for Pedagogy	7	46.7%	7	53.8%	14	93.3%	12	92.3%	14	93.3%	13	100.0%
Curriculum & Instruction	6	30.0%	5	23.8%	15	75.0%	16	76.2%	15	75.0%	17	81.0%
Health & Physical Edu.	5	50.0%	5	45.5%	8	80.0%	9	81.8%	9	90.0%	10	90.9%
VISUAL & PERF. ARTS	25	48.1%	28	53.8%	35	67.3%	36	69.2%	19	36.5%	20	38.5%
Design	3	33.3%	3	33.3%	4	44.4%	4	44.4%	0	0.0%		0.0%
Fine Arts	9	60.0%	9	60.0%	9	60.0%	10	66.7%	3	20.0%	4	26.7%
Music	9	52.9%	10	58.8%	14	82.4%	14	82.4%	14	82.4%	14	82.4%
Theatre and Dance	4	36.4%	6	54.5%	8	72.7%	8	72.7%	2	18.2%	2	18.2%
TOTAL	149	53.0%	157	56.3%	229	81.5%	226	81.0%	217	77.2%	219	78.5%

**FULL-TIME INSTRUCTIONAL * FACULTY
BY RANK AND DEPARTMENT
FALL 2006 - FALL 2009**

COLLEGE/DEPARTMENT	PROFESSOR				ASSOCIATE PROFESSOR				ASSISTANT PROFESSOR				INSTRUCTOR			
	2006	2007	2008	2009	2006	2007	2008	2009	2006	2007	2008	2009	2006	2007	2008	2009
ARTS & SCIENCES	35	34	36	41	39	45	47	50	42	41	37	29	22	23	23	20
Biology	5	5	5	5	3	3	5	5	6	6	5	5	1	1	1	1
Chemistry & Physics	5	6	6	6	2	2	3	5	7	8	7	5	1	1	2	0
English	4	3	3	5	6	7	7	6	6	5	4	1	5	7	8	7
History	1	2	2	3	6	5	5	5	3	1	0	0	0	0	0	0
Human Nutrition	1	1	1	0	2	2	2	2	0	0	0	0	3	3	3	3
Mass Communication	1	1	2	2	3	3	4	4	2	2	0	1	1	1	1	2
Mathematics	5	5	4	4	1	2	2	2	4	5	5	4	3	2	1	2
Modern & Classical Lang.	3	3	3	3	2	2	2	2	0	0	0	1	2	3	3	1
Phil. and Religious Studies	0	0	0	0	0	2	2	3	5	3	3	2	0	0	0	0
Political Science	2	2	3	4	3	5	4	4	3	1	1	0	0	0	0	0
Psychology	2	2	2	3	7	8	7	8	3	3	5	3	1	1	0	0
Social Work	2	1	2	2	3	3	2	2	1	4	4	4	2	2	2	3
Sociology	4	3	3	4	0	1	1	1	2	3	3	3	2	1	0	0
Speech	0	0	0	0	1	0	1	1	0	0	0	0	1	1	2	1
BUSINESS ADMIN.	13	12	12	12	19	20	19	17	10	8	9	11	0	2	1	1
Acc., Finance & Econ.	6	5	4	5	10	10	7	5	1	1	4	6	0	1	0	1
Comp. Sci. & Quant. Method	3	3	4	3	4	5	6	6	2	2	0	0	0	0	0	0
Management & Marketing	4	4	4	4	5	5	6	6	7	5	5	5	0	1	1	0
EDUCATION	7	6	5	4	11	14	14	12	21	20	19	23	7	7	7	5
Center for Pedagogy	2	2	2	1	5	6	6	6	8	7	6	6	1	1	1	0
Counseling & Leadership***																
Curriculum & Instruction	3	2	1	1	5	5	6	4	7	9	8	11	4	4	5	4
Health & Physical Education	2	2	2	2	1	3	2	2	6	4	5	6	2	2	1	1
VISUAL & PERF. ARTS	13	11	9	10	16	15	18	19	17	21	20	18	1	3	5	6
Fine Arst**	5	4	3	3	8	5	6	7	8	5	4	4	0	1	2	1
Design**		0	0	0		2	3	3		5	5	5		1	1	1
Music	7	6	5	5	4	4	5	5	5	6	6	6	1	1	1	2
Theatre and Dance	1	1	1	2	4	4	4	4	4	5	5	3	0	0	1	2
LIBRARY	3	3	3	2	2	4	4	5	4	4	4	3	1	0	0	0
TOTAL	71	66	65	69	87	98	102	103	94	94	89	84	31	35	36	32

* Includes Library.

**Formerly combined as Art & Design; separated into Fine Arts and Design in 2007

***Joined with Curriculum & Instruction

**FULL-TIME INSTRUCTIONAL* FACULTY HEADCOUNT
BY GENDER AND DEPARTMENT
FALL 2007 - FALL 2009**

COLLEGE/DEPARTMENT	MALE			FEMALE		
	2007	2008	2009	2007	2008	2009
ARTS & SCIENCES	72	69	71	71	74	69
Biology	7	7	7	8	9	9
Chemistry & Physics	10	10	10	7	8	6
English	6	6	6	16	16	13
History	6	5	6	2	2	2
Human Nutrition	2	2	2	4	4	3
Mass Communication	5	5	6	2	2	3
Mathematics	8	7	8	6	5	4
Modern & Classical Lang.	4	4	3	4	4	4
Phil. and Religious Studies	4	4	4	1	1	1
Political Science	6	6	6	2	2	2
Psychology	8	7	7	6	7	7
Social Work	2	2	2	8	8	9
Sociology	4	4	4	4	3	4
Speech	0	0	0	1	3	2
BUSINESS ADMIN.	29	25	26	13	16	15
Acc., Finance & Econ.	14	11	13	3	4	4
Comp. Sci. & Quant. Method	7	7	7	3	3	2
Management & Marketing	8	7	6	7	9	9
EDUCATION	13	12	11	34	33	33
Center for Pedagogy	6	5	5	10	10	8
Curriculum & Instruction	5	4	3	15	16	17
Health & Physical Education	2	3	3	9	7	8
VISUAL & PERF. ARTS	29	31	31	21	21	22
Fine Arts**	9	8	9	6	7	6
Design**	5	7	7	3	2	2
Music	11	11	11	6	6	7
Theatre and Dance	4	5	4	6	6	7
LIBRARY	3	3	3	8	8	7
TOTAL	146	140	142	147	152	146

* Includes Library.

**Formerly Art & Design; split in 2007 to become Fine Arts and Design.

**FULL-TIME INSTRUCTIONAL* FACULTY
BY DEPARTMENT
FALL 2005 - FALL 2009**

COLLEGE/DEPARTMENT	Fall 2005		Fall 2006		Fall 2007		Fall 2008		Fall 2009	
	#	TT	#	TT	#	TT	#	TT	#	TT
ARTS & SCIENCES	135	112	137	110	143	116	143	116	140	114
Biology	14	13	15	13	15	13	16	14	16	14
Chemistry and Physics	15	11	15	11	17	13	18	14	16	13
English	21	15	21	16	22	15	22	14	19	12
History	10	10	10	10	8	8	7	7	8	8
Human Nutrition	6	3	6	3	6	3	6	3	5	2
Mass Communication	7	6	7	6	7	6	7	6	9	7
Mathematics	12	9	13	9	14	12	12	11	12	10
Modern and Classical Languages	5	4	7	5	8	5	8	5	7	5
Philosophy and Religious Studies	5	4	5	4	5	5	5	5	5	5
Political Science	9	9	8	8	8	8	8	8	8	8
Psychology	14	14	13	12	14	13	14	13	14	13
Social Work	6	5	8	6	10	8	10	8	11	8
Sociology	8	7	8	6	8	7	7	7	8	8
Speech	3	2	1	1	1	0	3	1	2	1
BUSINESS ADMINISTRATION**	43	36	42	37	42	36	41	36	41	36
Accounting, Finance, & Economics	17	13	17	14	17	12	15	12	17	13
Computer Science & Quant. Meth.	10	9	9	9	10	10	10	10	9	9
Management and Marketing	16	14	16	14	15	14	16	14	15	14
EDUCATION**	48	36	46	33	47	38	45	37	44	37
Center for Pedagogy	16	15	16	15	16	15	15	14	13	13
Counseling and Leadership										
Curriculum and Instruction	21	13	19	11	20	15	20	15	20	16
Health and Physical Education	11	8	11	7	11	8	10	8	11	8
VISUAL & PERFORMING ARTS	44	38	47	40	50	44	52	44	53	45
Fine Arts***	22	20	21	19	15	12	15	11	15	13
Design***					8	7	9	8	9	8
Music	15	12	17	14	17	16	17	16	18	16
Theatre and Dance	7	6	9	7	10	9	11	9	11	8
LIBRARY	13	11	11	10	11	10	11	10	10	9
TOTAL	283	233	283	230	293	244	292	243	288	241

* Includes Library.

** In the College of Education and the College of Business Administration, faculty have moved between departments during the 5-year period shown. Counseling now part of Curriculum & Instruction.

***Formerly Art & Design; split in Fall 2007 to become Design and Fine Arts

Notes: # is headcount employed as of October 1; TT is number tenured or holding tenure track appointment.

Faculty on leave without pay are not counted;

**PART-TIME INSTRUCTIONAL FACULTY AND FTE
BY DEPARTMENT
FALL 2005 - FALL 2009**

COLLEGE/DEPARTMENT	FALL 2005		FALL 2006		FALL 2007		FALL 2008		FALL 2009		DIFF 05-09	
	#	FTE	#	FTE	#	FTE	#	FTE	#	FTE	#	FTE
ARTS & SCIENCES	94	55.78	103	56.71	103	57.94	95	54.21	79	46.75	-15	-9.03
Biology	13	7.14	13	6.81	12	6.14	12	5.89	11	5.40	-2	-1.74
Chemistry and Physics	5	2.32	8	3.40	8	4.07	8	4.07	8	3.82	3	1.50
English	13	10.71	17	11.29	17	10.71	10	6.23	10	7.22	-3	-3.49
History	4	1.74	4	1.58	5	2.16	2	1.49	1	1.25	-3	-0.49
Human Nutrition	7	2.24	8	3.57	8	3.90	9	4.48	10	4.57	3	2.33
Mass Communication	2	0.50	1	0.50	2	0.75	2	0.75	0	0.00	-2	3.65
Mathematics	4	2.99	3	1.49	4	2.99	6	4.15	6	4.15	2	4.31
Modern and Classical Languages	21	16.85	19	14.70	16	12.20	14	10.71	11	7.30	-10	-16.85
Philosophy and Religious Studies	0	0.00	1	0.25	0	0.00	1	0.75	0	0.00	0	1.25
Political Science	5	2.24	4	1.41	4	1.49	5	1.83	4	1.25	-1	-0.99
Psychology	12	5.48	12	5.98	11	6.81	11	7.22	10	6.72	-2	1.24
Social Work	1	0.25	5	1.49	4	1.49	4	1.58	3	1.08	2	0.83
Sociology	7	3.32	7	3.49	10	4.23	9	3.98	4	2.99	-3	-0.33
Speech	0	0.00	1	0.75	2	1.00	2	1.08	1	1.00	1	1.00
BUSINESS ADMINISTRATION*	9	2.75	13	5.48	14	8.47	13	4.48	6	1.49	-3	-1.26
Accounting, Finance & Econ.	3	1.25	5	2.74	5	2.74	5	1.74	0	0.00	-3	-1.25
Computer Sci. & Quan. Meth.	1	0.25	0	0.00	0	0.00	1	0.50	0	0.00	-1	-0.25
Management and Marketing	5	1.25	8	2.74	9	5.73	7	2.24	6	1.49	1	0.24
EDUCATION*	44	14.03	50	20.50	65	46.73	29	16.26	36	17.94	-8	3.91
Center for Pedagogy	9	4.65	10	7.80	13	4.90	4	1.74	6	2.24	-3	-2.41
Counseling and Leadership	0	0.00	0	0.00	0	0.00	0	0.00	0	0.00	0	0.00
Curriculum and Instruction	25	7.14	6	1.91	9	6.64	5	3.40	6	2.66	-19	-4.48
Health and Physical Education	10	2.24	15	5.06	18	7.47	14	6.97	17	6.23	7	3.99
Professional Development			19	5.73	25	27.72	6	4.15	7	6.81	7	6.81
VISUAL & PERFORMING ARTS	74	37.93	72	40.84	70	41.50	62	41.59	57	38.10	-17	0.17
Art and Design	33	15.27	31	14.86							-33	-15.27
Fine Arts***					27	11.87	20	11.45	19	11.87	19	11.87
Design***					6	4.48	6	3.74	6	3.24	6	3.24
Music	25	16.68	28	21.00	23	19.26	25	21.00	25	19.09	0	2.41
Theatre and Dance	16	5.98	13	4.98	14	5.89	11	5.40	7	3.90	-9	-2.08
ACAD 101**	7	1.16	24	3.82	23	2.91	1	0.25	0	0.00	-7	-1.16
PART-TIME TOTAL	228	111.65	262	127.35	275	157.55	200	116.79	178	104.28	-50	-7.37

* In the College of Education and the College of Business Administration, faculty have moved between departments during the 5-year period shown.

Notes: # is headcount employed as of October 1; FTE is teaching FTE only.

** In fall 2003, CISM program was changed, and renamed ACAD

***Art & Design split in 2007 Fall

**FULL-TIME INSTRUCTIONAL FACULTY
BY DEPARTMENT, RACE AND GENDER
FALL 2009**

COLLEGE/DEPARTMENT	AFRICAN AMERICAN			AMERICAN INDIAN/NATIVE ALASKAN			ASIAN/PACIFIC ISLANDER			HISPANIC			WHITE			TOTAL		
	Male	Female	Total	Male	Female	Total	Male	Female	Total	Male	Female	Total	Male	Female	Total	Male	Female	Total
ARTS & SCIENCES	2	6	8	0	0	0	2	4	6	3	2	5	63	57	120	70	69	139
Biology	0	0	0	0	0	0	1	1	2	0	0	0	6	8	14	7	9	16
Chemistry & Physics	1	1	2	0	0	0	1	0	1	0	0	0	8	5	13	10	6	16
English	0	0	0	0	0	0	0	0	0	0	0	0	6	13	19	6	13	19
History	0	0	0	0	0	0	0	0	0	0	0	0	6	2	8	6	2	8
Human Nutrition *	0	0	0	0	0	0	0	0	0	0	0	0	1	3	4	1	3	4
Mass Communication	0	0	0	0	0	0	0	1	1	0	0	0	6	2	8	6	3	9
Mathematics	0	0	0	0	0	0	0	1	1	1	0	1	7	3	10	8	4	12
Modern & Classical Language	0	0	0	0	0	0	0	1	1	1	2	3	2	1	3	3	4	7
Phil0 and Religious Studies	0	0	0	0	0	0	0	0	0	0	0	0	4	1	5	4	1	5
Political Science	1	0	1	0	0	0	0	0	0	0	0	0	5	2	7	6	2	8
Psychology	0	2	2	0	0	0	0	0	0	0	0	0	7	5	12	7	7	14
Social Work	0	3	3	0	0	0	0	0	0	0	0	0	2	6	8	2	9	11
Sociology	0	0	0	0	0	0	0	0	0	1	0	1	3	4	7	4	4	8
Speech	0	0	0	0	0	0	0	0	0	0	0	0	0	2	2	0	2	2
BUSINESS ADMIN0	3	2	5	0	0	0	4	0	4	0	0	0	18	13	31	25	15	40
Account, Finance & Economic *	3	0	3	0	0	0	1	0	1	0	0	0	8	4	12	12	4	16
Comp0 Sci0 & Quant0 Method	0	1	1	0	0	0	2	0	2	0	0	0	5	1	6	7	2	9
Management & Marketing	0	1	1	0	0	0	1	0	1	0	0	0	5	8	13	6	9	15
EDUCATION	0	3	3	0	0	0	0	0	0	1	0	1	10	30	40	11	33	44
Center for Pedagogy	0	0	0	0	0	0	0	0	0	1	0	1	4	8	12	5	8	13
Curriculum & Instruction	0	3	3	0	0	0	0	0	0	0	0	0	3	14	17	3	17	20
Health & Physical Education	0	0	0	0	0	0	0	0	0	0	0	0	3	8	11	3	8	11
VISUAL & PERFO ARTS	0	0	0	0	0	0	0	2	2	0	0	0	29	20	49	29	22	51
Fine Arts	0	0	0	0	0	0	0	0	0	0	0	0	9	6	15	9	6	15
Design *	0	0	0	0	0	0	0	1	1	0	0	0	6	1	7	6	2	8
Music	0	0	0	0	0	0	0	1	1	0	0	0	11	6	17	11	7	18
Theatre and Dance *	0	0	0	0	0	0	0	0	0	0	0	0	3	7	10	3	7	10
TOTAL	5	11	16	0	0	0	6	6	12	4	2	6	120	120	240	135	139	274

* 1 Male Non-Resident Alien is not counted

Full-Time Employees By EEO Occupational Category

	Fall 05	Fall 06	Fall 07	Fall 08	Fall 09
Full-Time Faculty 9/10 month	250	247	256	259	254
Full-Time Faculty 11/12 month	22	19	26	29	24
Full-Time Faculty - Total	272	266	282	288	278
Executive/Administrative & Managerial	39	34	40	41	21
Other Professionals	184	197	211	222	197
Technical & Paraprofessionals	74	80	85	88	90
Clerical & Secretarial	86	94	92	91	84
Skilled Crafts	39	38	39	39	37
Service/Maintenance	85	84	84	84	86
Total	779	793	833	853	793

DEFINITIONS FOR FINANCIAL INFORMATION

The following schedules provides information taken from the IPEDS reports submitted by Winthrop for the four years 1995-1996 through 1999-2000. Information is grouped by type of funding and program.

Provided on the expenditure schedule is the percentage each program in the Educational and General Operations is (E&G) of total Educational and General Fund Revenue. If the total percentage of E&G expenditures exceeds 100%, this is an indication that revenue other than E&G revenue was used to support E&G activities.

Funding is summarized by Unrestricted and Restricted funds. Restricted funds are those funds received for specific purposes and not available to be used in general operations of the University.

Program descriptions are as follows:

INSTRUCTION: Expenditures for academic, vocational, remedial, and technical instruction.

LIBRARY: Expenditures for organized activities that directly support the operation catalogued or otherwise classified collection.

ACADEMIC SUPPORT: Expenditures to provide support services for instruction, services that directly assist the academic function, media support, academic administration, and course/curriculum development.

RESEARCH: Expenditures for activities specifically organized to produce research outcomes, whether commissioned by an agency external to the University or separately budgeted by the University.

PUBLIC SERVICE: Expenditures in providing noninstructional services beneficial to individuals and groups external to the institution.

STUDENT SERVICES: Expenditures for the office of admission, registrar and those activities whose primary purpose is to contribute to the student's emotional and physical well-being and to his or her intellectual, cultural and social development outside the context of the formal instruction program.

INSTITUTIONAL SUPPORT: Expenditures for the following categories: Central executive-level activities concerned with management and long-range planning of the entire institution; fiscal operations including accounting and payroll; administrative data processing; space management; employee personnel and records; logistical activities that provide procurement, storerooms, safety, security, printing and transportation services; support services to faculty and staff that are not operated as auxiliary enterprises; and community and alumni relations, including development and funding raising.

OPERATIONS AND MAINTENANCE OF PLANT: Expenditures of current operating funds for the operation and maintenance of physical plant follows: Physical plant administration; building maintenance; custodial services; utilities; landscaping and ground maintenance; and major repairs and renovations.

SCHOLARSHIPS AND FELLOWSHIPS: Expenditures for scholarships and fellowships in the form of out-right grants to students selected by the institution and financed from current funds, restricted or unrestricted.

MANDATORY TRANSFERS: Transfers from current fund groups to other fund groups arising from binding legal agreements related to the financing of educational plant facilities and grant agreements with agencies of the federal government, donors and other organizations to match gifts and grants to loan and other funds.

NONMANDATORY TRANSFERS: Transfer from the current fund groups for purposes such as additions to loan funds, general or specific plant additions, voluntary renewals and replacements of plant and prepayments on debt principal.

AUXILIARY OPERATIONS: An entity that exists to furnish goods and services to students, faculty or staff and that charges as fee directly related to, although not necessarily equal to, the cost of the goods or services. Examples of auxiliary operations at Winthrop are as follows: Housing, Cafeteria and health center, vending operations and laundry, and print shop.

ACADEMIC YEAR STUDENT FEES 2000-2009

STUDENT FEES	2000-01	2001-02	2002-03	2003-04	2004-05	2005-06	2006-07	2007-08	2008-09	2009-10
TUITION										
In-State	4,262	4,668	5,600	6,652	7,816	8,756	9,500	10,210	11,060	11,606
% Difference	3.3%	9.5%	20.0%	18.8%	17.5%	12.0%	8.5%	7.5%	8.3%	4.9%
Out-of-State	7,680	8,756	10,310	12,258	14,410	16,150	17,564	19,034	20,610	21,596
% Difference	3.3%	14.0%	17.7%	18.9%	17.6%	12.1%	8.8%	8.4%	8.3%	4.8%
ROOM & BOARD										
Room	2,500	2,592	2,670	2,770	3,060	3,420	3,560	3,780	3,900	4,242
% Difference	3.3%	3.7%	3.0%	3.7%	10.5%	11.8%	4.1%	6.2%	3.2%	8.8%
Board	1,656	1,746	1,800	1,860	1,932	1,932	2,010	2,130	2,240	2,400
% Difference	3.4%	5.4%	3.1%	3.3%	3.9%	0.0%	4.0%	6.0%	5.2%	7.1%
TOTAL FEES										
In-State	8,418	9,006	10,070	11,282	12,808	14,108	15,070	16,120	17,200	18,248
% Difference	3.3%	7.0%	11.8%	12.0%	13.5%	10.1%	6.8%	7.0%	6.7%	6.1%
Out-of-State	11,836	13,094	14,780	16,888	19,402	21,502	23,134	24,944	26,750	28,238
% Difference	3.3%	10.6%	12.9%	14.3%	14.9%	10.8%	7.6%	7.8%	7.2%	5.6%

Note: % Difference is the percent change from the previous year to the current year.

AID AWARDED TO ENROLLED UNDERGRADUATE FOR AY2008-09

Scholarship/Grant	Need-based aid	Non-need-based aid
	Total Dollars	Total Dollars
Federal	\$5,578,188	\$219,412
State	\$7,495,674	\$4,085,289
Other external scholarship/ grants not awarded by college	\$444,459	\$902,387
Institutional	\$2,894,317	\$4,006,633
Total Scholarships/Grants*	\$16,412,638	\$9,213,721
Self-Help		
Student loans	\$9,963,043	\$18,430,000
Federal work study	\$240,000	
State and other work study/ employment	\$0	\$2,121,943
Total Self help*	\$10,203,043	\$20,551,943
Parent loans	\$0	\$2,419,622
Tuition Waivers	\$0	\$332,175
Athletic Awards	\$520,408	\$1,237,140

NUMBER OF ENROLLED STUDENTS RECEIVING AID FOR FALL 2008

	First-time, full-time freshman	Full-time Undergraduate	Less than full-time
A. # of degree-seeking students.	1075	4490	578
B. # of students in line A who were financial aid applicants.	897	3427	227
C. # of students in line B who were determined to have financial need.	683	2748	201
D. # of students in line C who received any financial aid.	680	2711	186
E. # of students in line D who received any need-based gift aid.	669	2266	121
F. # of students in line D who received any need-based self-help aid.	490	2217	161
G. # of students in line D who received any non-need-based gift aid.	115	274	0
H. # of students in line D whose need was fully met.	182	545	12
I. On average, the % of need that was met of students who received any need-based aid. Exclude any resources that were awarded to replace EFC.	72	61	33
J. The average financial aid package of those in line c. Exclude any resources that were awarded to replace EFC.	10796	9550	4956
K. Average need-based gift award of those in line D.	8347	7243	2298
L. Average need-based self-help award (excluding PLUS loans and private alternative loans) of those in line D.	3587	4275	3999
M. Average need-based loan (excluding PLUS loans and private alternative loans) of those in line D.	3391	4167	3999
N. Number of students in line A who had no financial need who received non-need-based aid (exclude those receiving athletic awards and tuition benefits).	64	238	0
O. Average award to students in line N.	5460	4520	0
P. Number of students in line A who received a non-need-based athletic award.	40	158	4
Q. Average non-need-based athletic award to those in line P.	7381	7830	750

Note: Students may be counted in more than one row, and full-time freshmen should also be counted as full-time undergraduates.

Distribution of Loans

Year / Type of Loan	Number**	\$ Amount	% of #	% of \$
2006-2007 Total	5,105	\$24,886,471	100.0%	100.0%
Direct Loan Program*	4,378	\$20,500,160	85.7%	82.4%
Perkins Loan	212	\$435,717	4.2%	1.8%
PLUS Program	352	\$3,291,978	6.9%	13.2%
Teachers Loan Program	163	\$658,616	3.2%	2.6%
2007-2008 Total	5,409	\$26,551,518	100.0%	100.0%
Direct Loan Program*	4,583	\$22,480,388	84.7%	84.7%
Perkins Loan	305	\$569,161	5.6%	2.1%
PLUS Program	307	\$2,650,178	5.7%	10.0%
Teachers Loan Program	214	\$851,791	4.0%	3.2%
2008-2009 Total	6,538	\$34,358,121	100.0%	100.0%
Direct Loan Program*	5,906	\$30,895,782	90.3%	89.9%
Perkins Loan	83	\$157,606	1.3%	0.5%
PLUS Program	338	\$2,498,010	5.2%	7.3%
Teachers Loan Program	211	\$806,723	3.2%	2.3%
2009-2010 Total	7,256	\$38,758,854	100.0%	100.0%
Direct Loan Program*	6,509	\$33,469,321	89.7%	86.4%
Perkins Loan	55	\$100,500	0.8%	0.3%
PLUS Program	489	\$4,357,033	6.7%	11.2%
Teachers Loan Program	203	\$832,000	2.8%	2.1%

* Represents # of Subsidized Loan and Unsubsidized Loans made, not actual # of recipients. Actual # of recipients would be a smaller number.

** Counts are duplicated and reflect multiple loans.

WINTHROP UNIVERSITY LIBRARY STATISTICS 2002 - 2008

DESCRIPTION	2002-03	2003-04	2004-05	2005-06	2006-07	2007-08	2008-09
LIBRARY STAFF	31.00	31.00	31.00	31.00	31.00	31.00	28.75
Professional Librarians	14	14	14	14	13	13	12.25
Para-Professionals	16.00	16.00	16.00	16.00	17.00	17.00	16.50
Clericals	1.00	1.00	1.00	1.00	1.00	1.00	0.00
HOLDINGS							
Volumes in Book Stock	414,871	419,244	421,505	419,244	425,648	429,741	434,732
Shelving Capacity (Volumes)	400,000	400,000	400,000	400,000	400,000	400,000	400,000
U.S. Government Documents	0***	0***	0***	0***	0***	0***	0***
Units of Microtext	1,236,619	1,242,545	1,247,774	1,242,545	1,249,379	1,258,123	1,258,703
Audio Recordings (Discs & Cassettes)	1,739	1,739	1,756	1,739	1,778	1,809	3,227
Maps	2,675	2,733	2,763	2,733	2,824	2,903	3,532
CD-ROM Titles	282	294	310	294	322	20,836	20,873
Total Bound Periodicals & Serials	56,183	70,268	70,268	70,268	69,917	64,671	64,965
Total Current Subscription Serial Titles Regularly Received	1,446	1,729	1,421	1,729	1,545	1,408	1,492
Archives (Approximate Piece Count)	2,893,465	2,964,747	3,102,566	2,964,747	3,155,716	3,300,730	3,354,277
TOTAL OPERATING EXPENDITURES	\$2,359,729	\$2,424,034	\$2,683,011	\$2,424,034	\$2,818,003	\$2,987,000	\$2,575,465
STUDENTS							
Student Headcount Enrollment (Fall)	6,462	6,558	6,447	6,558	6,292	6,382	6,249
Expenditures per Student	\$365	\$370	\$416	\$370	\$448	\$468	\$412
Volumes in Book Stock per Student	64	64	65	64	68	67	70
Students per Library Staff Member	208	212	208	212	203	206	217
Students per Librarian	462	468	461	468	484	491	510

*** U.S. Government Documents are now included in the total volume count

The Center for Career and Civic Engagement
NUMBER OF CO-OPS/Internships'

SCHOOL/COLLEGE	2004-05	2005-06	2006-07	2007-08	2008-09*
ARTS & SCIENCES	11	28	19	27	21
BUSINESS ADMINISTRATION	11	4	4	1	1
EDUCATION	48	74	67	52	32
VISUAL & PERFORMING ARTS	44	28	42	28	24
TOTAL	114	134	132	108	78

NUMBER OF CO-OP/Internship EMPLOYERS'

YEAR	A&S	Business	Education	VPA	Other Major	Total
2008-09*	22	1	41	24	0	88
2007-08	27	1	44	28		100
2006-07		4	58	40		102
2005-06	18	3	60	24	5	110
2004-05	10	10	21	18	0	59
2003-04	25	29	40	28	8	130
TOTAL	102	48	264	162	13	589

CO-OP/Internship CREDIT HOURS'

	A&S	Business	Education	VPA	Total
2008-09*					
# of Students	21	1	32	24	78
Credit Hours Earned	44	1	99	72	216
Tuition (\$396 avg./credit hour)	\$17,424	\$396	\$39,204	\$28,512	\$85,536
2007-08					
# of Students	27	1	52	28	108
Credit Hours Earned	51	1	127	87	266
Tuition (\$396 avg./credit hour)	\$20,196	\$396	\$50,292	\$34,452	\$105,336
2006-07					
# of Students	17	2	67	41	127
Credit Hours Earned	34.5	4	143	123	304.5
Tuition (\$396 avg./credit hour)	\$13,662	\$1,584	\$56,628	\$48,708	\$120,582
2005-06					
# of Students	15	3	72	26	116
Credit Hours Earned	31	9	146	81	267
Tuition (\$375 avg./credit hour)	\$11,315	\$3,375	\$54,750	\$30,375	\$99,815
2004-05					
# of Students	9	5	55	31	100
Credit Hours Earned	19	13	135.5	90	257.5
Tuition (\$203 avg./credit hour)	\$6,213	\$4,251	\$44,309	\$29,448	\$84,221

* In 2008-2009 we renamed the co-operative education program the CCE Internship Program.

Job Location and Development (JLD)

	2008-09
Number of known students for whom jobs were located or developed	38*
Total earnings of the students in which we collected data	\$51,401

*This excludes the jobs located with the internship program

Part-time Job Listings**

	2003-04	2004-05	2005-06	2006-07	2007-08
Total Employers	175	426	113	105	
First-Time Employers	128	281	51	60	
Repeat Employers	47	145	62	45	
# of Jobs Posted	312	727	276	181	
# of Students Placed	74	120	78	58	
Total Earnings*	\$121,185	\$264,600	\$211,809	\$178,924	
Yearly Avg. Earned per Student	\$1,638.00	\$2,205.00	\$2,715.00	\$3,084.90	
Avg. Hourly Wage per Student	\$7.46	\$7.50	\$7.75	\$7.91	
Avg. Hrs. Worked per Week per Stu.	13.4	14	14	15	

*Estimated earnings based on average hours worked and money earned per week for each student placed.

Note: Students no longer register with open board system

** No longer post new data

OPPORTUNITIES POSTED AT CAREER AND CIVIC ENGAGEMENT

YEAR	# of Volunteer Service Listings	# of Internship Listings**	# Part-time Job listings	# Full-time Job listings	Total Unique Opportunities	# EagleTrak	On Campus Recruiters
2008-09	111	177	437	971	1369		176
2007-08*	35	126	1045	1076	1340		153
2006-07		162	181			1,925	120
2005-06		94	250			1621	100
2004-05		146	727			4164	87
2003-04		81	128			1446	71
2002-03		93	182			333	101
TOTAL		879	2950	2047	2709	9489	808

*Use a new system "EAGLElink", and no longer use EagleTrack. Also numbers are not based on a full year.

The system is up until Dec 2007

** In 2007-2008 we renamed the co-operative education program the CCE Internship program. We now use the term "Internship" and not "Co-op"

WINTHROP UNIVERSITY ACTIVE ALUMNI
By County and State of Residence
As of November 25, 2009

S.C. COUNTY OF RESIDENCE	NUMBER OF ACTIVE ALUMNI
Abbeville	75
Aiken	440
Allendale	27
Anderson	599
Bamberg	51
Barnwell	72
Beauford	1
Beaufort	324
Berkeley	373
Calhoun	73
Charleston	1,621
Cherokee	379
Chester	704
Chesterfield	317
Clarendon	109
Colleton	140
Darlington	320
Dillon	139
Dorchester	396
Edgefield	95
Fairfield	167
Florence	679
Georgetown	268
Greenville	2,326
Greenwood	266
Hampton	67
Horry	682
Jasper	15
Kershaw	385
Lancaster	904
Laurens	296
Lee	66
Lexington	1,351
Marion	126
Marlboro	114
McCormick	29
Mecklenburg	0
Newberry	211
Oconee	274
Orangeburg	353
Pickens	502
Richland	2,023
Saluda	49
Spartanburg	1,334
Sumter	426
Union	230
Williamsburg	97
York	8,063
Not Identified	8
TOTAL	27,566

STATE OF RESIDENCE	NUMBER OF ACTIVE ALUMNI
Alabama	219
Alaska	11
Arizona	77
Arkansas	32
California	285
Colorado	93
Connecticut	55
Delaware	36
District of Columbia	41
Florida	985
Georgia	1621
Hawaii	17
Idaho	7
Illinois	131
Indiana	65
Iowa	26
Kansas	38
Kentucky	93
Louisiana	61
Maine	18
Maryland	301
Massachusetts	69
Michigan	90
Minnesota	36
Mississippi	43
Missouri	67
Montana	13
Nebraska	18
Nevada	21
New Hampshire	17
New Jersey	149
New Mexico	26
New York	243
North Carolina	6248
North Dakota	6
Ohio	207
Oklahoma	36
Ontario	2
Oregon	49
Pennsylvania	197
Rhode Island	18
South Carolina	27566
South Dakota	7
Tennessee	417
Texas	376
Utah	17
Vermont	10
Virginia	775
Washington	71
West Virginia	38
Wisconsin	41
Wyoming	7
Other (Military Addresses)	22
Puerto Rico	5
Virgin Islands	5
TOTAL	41,124