

# WINTHROP UNIVERSITY MISSION STATEMENT

Winthrop University provides personalized and challenging undergraduate, graduate, and continuing professional education programs of national caliber within a context dedicated to public service to the State of South Carolina. All eligible bachelor's, master's and specialist degrees in the liberal arts and sciences, education, business and the visual and performing arts are nationally accredited – part of the University's commitment to be among the very best institutions of its kind in the nation.

Building on its origins as a women's college, the Winthrop University of the 21<sup>st</sup> century is achieving national recognition as a competitive and distinctive, co-educational, public, residential comprehensive teaching institution.

Winthrop enrolls an achievement-oriented, culturally diverse and socially responsible student body of 6,000 students and will remain a medium-sized comprehensive teaching university for the foreseeable future. The University recruits South Carolina's best students as well as highly qualified students from beyond the state whose presence adds diversity and enrichment to the campus and state. Winthrop prides itself on being an institution of choice for groups traditionally under-represented on the college campus.

Winthrop's historic campus, located in a dynamic city within a major metropolitan area, provides a contemporary and supportive environment that promotes student learning and development. Winthrop has a diverse and able faculty and professional staff of national caliber and supports their work as effective teachers, scholars, researchers, practitioners, and creative artists. Through this talented group, Winthrop students acquire and develop knowledge, skills, and values that enrich their lives and prepare them to meet the needs and challenges of the contemporary world, including the ability to communicate effectively, appreciate diversity, work collaboratively, synthesize knowledge, and adapt to change. Ongoing assessment of programs and services ensures both that all academic programs challenge students at their highest level of ability and that the library, instructional technology and other academic service areas support courses of study that are consonant with current methods and knowledge. As a result, Winthrop graduates are eminently well prepared to assume successful careers in business, industry, government, education, the arts, and human services, as well as to enter the most competitive graduate or professional schools.

**(Adopted by the Winthrop University Board of Trustees - 6/12/98)**  
**(Update Adopted by the Winthrop University Board of Trustees - 11/3/00)**

## **STATEMENTS ON ACCREDITATION**

Winthrop University is accredited by the Commission on Colleges of the Southern Association of Colleges and Schools to award bachelor's, master's and specialist degrees. A total of 37 undergraduate and 25 graduate degree programs are available in the College of Arts and Sciences, the College of Business Administration, the Richard W. Riley College of Education and the College of Visual and Performing Arts. Within the four colleges more than 80 undergraduate and 40 graduate programs of study are offered through concentrations and options.

Winthrop's academic programs are measured by national standards of quality. Each academic program that can be nationally accredited through a professional specialized organization has earned that distinction. The documents of accreditation reside in the Office of Academic Affairs. The following is a listing of the specialized organizations that Winthrop University is affiliated with:

Accrediting Council on Education in Journalism and Mass Communication (ACEJMC)

American Chemical Society (ACS)

Association to Advance Collegiate Schools of Business (AACSB International)

Certified Financial Planner Board of Standards (CFP)

Commission on Accreditation for Dietetics Education (CADE)

Commission on Accreditation of Allied Health Education Programs (CAAHEP)

Computing Accreditation Commission of the Accreditation Board for Engineering and Technology, Inc. (CAC/ABET)

Council for Accreditation of Counseling and Related Educational Programs (CACREP)

Council for Interior Design Accreditation (CIDA)

Council on Social Work Education (CSWE)

National Association of the Education of Young Children (NAEYC)

National Association of School Psychologists (NASP)

National Association of Schools of Art and Design (NASAD)

National Association of Schools of Dance (NASD)

National Association of Schools of Music (NASM)

National Association of Schools of Theatre (NAST)

National Council for the Accreditation of Teacher Education (NCATE)

Sport Management Program Review Council (SMPRC)

[http://www.winthrop.edu/acad\\_aff/accred.html](http://www.winthrop.edu/acad_aff/accred.html)

**WINTHROP UNIVERSITY BOARD OF TRUSTEES  
2007-2008**

<b>ELECTED MEMBERS</b>	<b>CONGRESSIONAL DISTRICT</b>	<b>TERM EXPIRES</b>
Frances Davenport	Alumni	2012
Glenda P. Owens	First	2012
Donna Tinsley	Second	2008
Jane L. LaRoche	Alumni	2010
Janet Smalley	Third	2010
Lee Cox	Fourth	2010
Susan Smith-Rex	At Large	2011
Kathy Bigham	Fifth	2012
Karl A. Folkens, Chair	Sixth	2008

**APPOINTED MEMBERS**

David E. Vipperman, Governor's Designee	Coterminous with Governor Sanford
Dalton B. Floyd, Jr., Governor's Appointee	Coterminous with Governor Sanford
Samuel R. Foster, State Superintendent of Education's Designee	Coterminous with Superintendent Rex

**EX-OFFICIO MEMBERS**

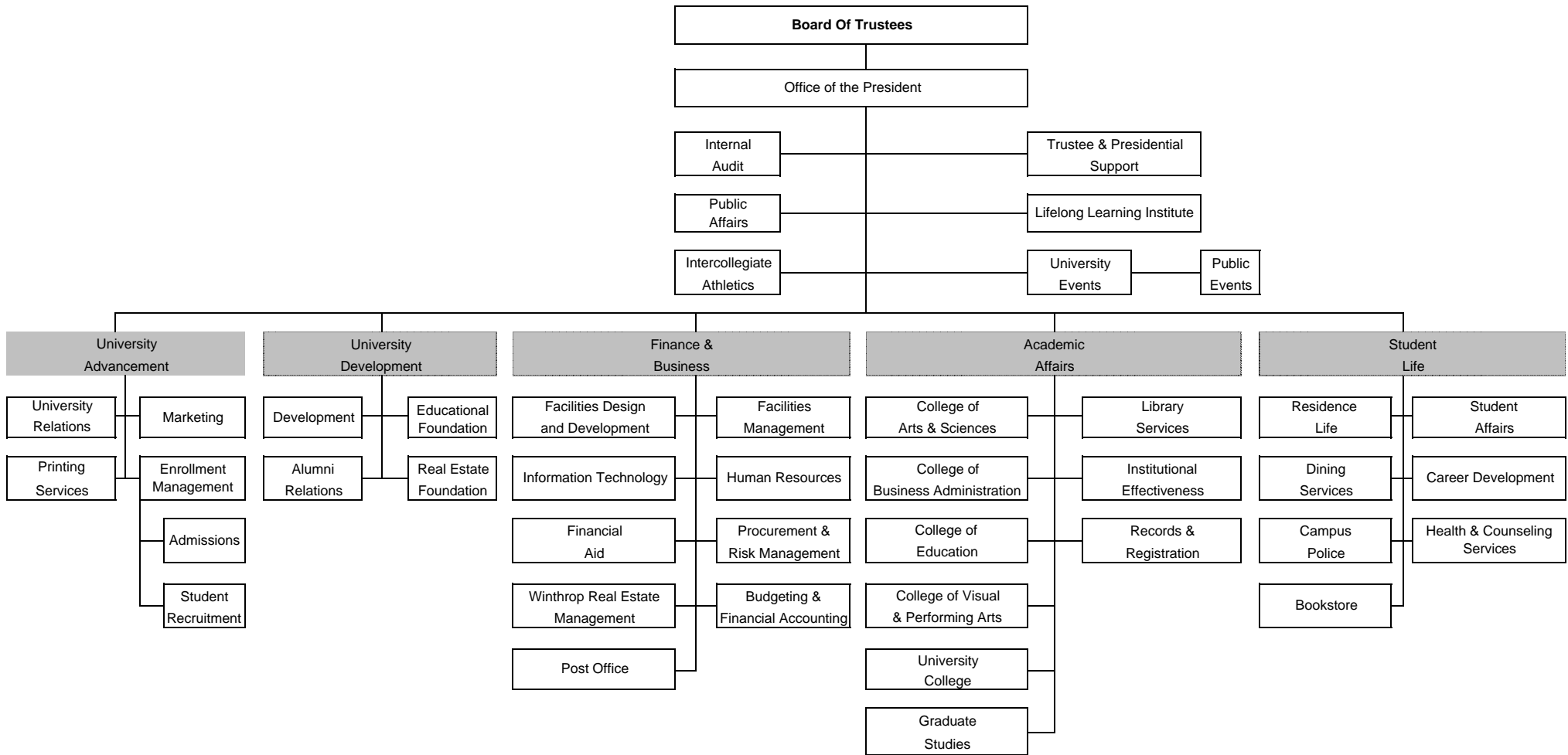
- The Honorable Mark Sanford, Governor
- James Rex, State Superintendent of Education
- Anthony J. DiGiorgio, President

**INVITED REPRESENTATIVES**

- Cheryl Fortner-Wood, Chair of Faculty Conference
- Dustin Evatt, Chair of Council of Student Leaders

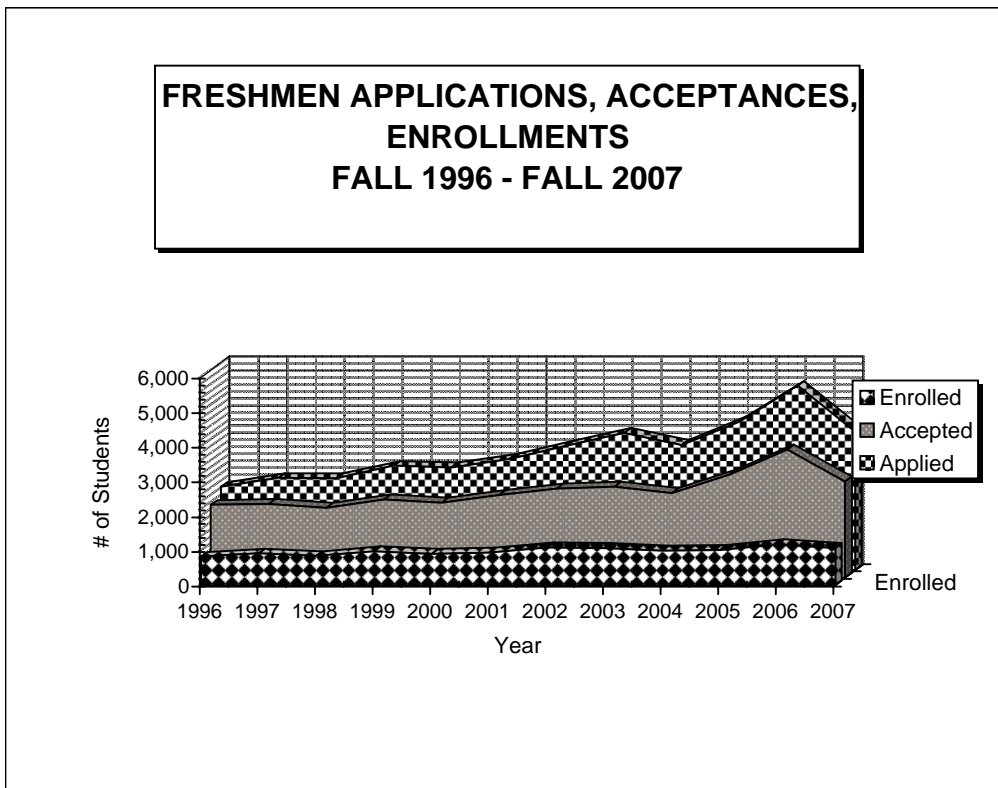
# WINTHROP UNIVERSITY

## ORGANIZATIONAL CHART 2007 - 2008



## FRESHMEN APPLICATIONS, ACCEPTANCES, ENROLLMENTS FALL 1996 - FALL 2007

YEAR	1996	1997	1998	1999	2000	2001	2002	2003	2004	2005	2006	2007
<b>Applications</b>	2,406	2,662	2,651	3,014	2,969	3,207	3,604	3,972	3,617	4,303	5,328	3,996
<b>Acceptances</b>	2,104	2,130	2,019	2,261	2,163	2,389	2,579	2,632	2,452	2,985	3,704	2,781
<b>Acceptances as % of Applied</b>	87.4%	80.0%	76.2%	75.0%	72.9%	74.5%	71.6%	66.3%	67.8%	69.4%	69.5%	69.6%
<b>Enrolled</b>	819	912	836	971	907	946	1,086	1,074	1,001	1,017	1,183	1,074
<b>Enrolled as % of Accepted</b>	38.9%	42.8%	41.4%	42.9%	41.9%	39.6%	42.1%	40.8%	40.8%	34.1%	31.9%	38.6%



**FIRST-TIME FRESHMEN CLASS PROFILE**  
**Preliminary FALL 2007**

GENDER	Winthrop	
	#	Percent
Male	340	31.7%
Female	734	68.3%
<b>Total</b>	1074	100.0%

SCHOOL BACKGROUND	Winthrop	
	#	Percent
S.C. High School	921	85.8%
Out-of-State H.S./GED	135	12.6%
Foreign H.S./GED	16	1.5%
S.C. GED	0	0.0%
Home School	0	0.0%
Unknown High School	2	0.2%
<b>Total</b>	1074	100.0%

RACE	Winthrop			
	Male	Female	Total	Percent
International*	17	6	23	2.1%
Black (Non-Hispanic)	81	191	272	25.3%
Native American	0	1	1	0.1%
Asian / Pacific Islander	6	9	15	1.4%
Hispanic	6	20	26	2.4%
White (Non-Hispanic)	230	507	737	68.6%
Unknown			0	0.0%
<b>Total</b>	340	734	1074	100.0%

ENROLLMENT STATUS	Winthrop			
	Male	Female	Total	Percent
Full-Time	340	734	1074	100.0%
Part-Time	0	0	0	0.0%
<b>Total</b>	340	734	1074	100.0%

HIGH SCHOOL CLASS RANK	Winthrop		
	#	Percent	Cum. %
Top Tenth	182	18.2%	18.2%
Second Tenth	197	19.7%	37.9%
Third Tenth	189	18.9%	56.8%
Fourth Tenth	164	16.4%	73.2%
Fifth Tenth	123	12.3%	85.5%
Bottom 50%	145	14.5%	100.0%
<b>Subtotal</b>	1000	100%	
Unknown/unranked	74	6.9%	
<b>Total</b>	1074		

RESIDENCY	Winthrop			
	Male	Female	Total	Percent
South Carolina Residents	280	656	936	87.2%
Non-S.C. Residents	60	78	138	12.8%
<b>Total</b>	340	734	1074	100.0%

UNIVERSITY HOUSING	Winthrop Freshmen			
	Male	Female	Total	Percent
University Residences	299	659	958	89.2%
Off Campus	41	75	116	10.8%
<b>Total</b>	340	734	1074	100.0%

AVERAGE ACT/SAT SCORE	#	Score
SAT		
SAT Math	772	528
SAT Verb	772	525
ACT	287	22
No Score	15	
<b>Total</b>	1074	

AVERAGE HIGH SCHOOL GPA	#	GPA
	1053	3.59

## FIRST-TIME ENTERING FRESHMEN FALL 1999 - FALL 2007

	1999	2000	2001	2002	2003	2004	2005	2006	2007	06 to 07	
										% Diff	Diff
<b>Total 1st-Time Freshmen</b>	971	907	946	1086	1074	1001	1017	1183	1074	-9.2%	-109
<b>Winthrop's Average SAT and ACT including provisionals, internationals, and age 22 &amp; older</b>											
COMBINED SAT	1042	1056	1055	1055	1069	1068	1080	1054	1053	-0.1%	-1
VERB	525	532	530	526	535	536	539	526	525	-0.2%	-1
MATH	517	524	525	529	534	532	540	528	528	0.0%	0
# students w/ SAT	822	763	756	838	819	809	772	878	772	-12.1%	-106
% 1st-Time Freshmen	84.7%	84.1%	79.9%	77.2%	76.3%	80.8%	75.9%	74.2%	71.9%	-3.1%	0
ACT	23	22	22	22	22	21	22	22	22	0.0%	0
# students w/ ACT	138	135	178	243	251	190	242	299	287	-4.0%	-12
% 1st-Time Freshmen	14.2%	14.9%	18.8%	22.4%	23.4%	19.0%	23.8%	25.3%	26.7%	5.7%	0
# with no SAT or ACT Score	11	9	12	5	4	2	3	6	15	150.0%	9
	1.1%	1.0%	1.3%	0.5%	0.4%	0.2%	0.3%	0.5%	1.4%	175.4%	0

\* The use of SAT or ACT scores for admission to Winthrop for all new freshmen is based on the highest score of the two tests.



**SOUTH CAROLINA HIGH SCHOOLS  
WHICH CONTRIBUTED TEN OR MORE STUDENTS  
TO WINTHROP'S FRESHMAN CLASS IN ONE YEAR  
FALL 2003 - FALL 2007**

S.C. High School of Graduation	Enrolled Fall 03	Enrolled Fall 04	Enrolled Fall 05	Enrolled Fall 06	Enrolled Fall 07
Beaufort	0	0	7	0	5
Camden	4	3	9	0	4
Chapin	7	4	6	10	19
Charleston County School of Ar	10	1	11	10	3
Cheraw	8	1	2	4	8
Chester	0	0	5	8	7
Clover	15	14	25	28	21
Colleton County	5	11	3	6	0
Columbia	5	10	3	0	5
Conway	0	0	2	2	1
Crestwood	10	8	3	13	3
Dreher	6	16	2	6	6
Dutch Fork	19	13	12	19	11
Eastside	5	12	11	12	12
Fort Dorchester	15	4	10	13	16
Fort Mill	15	30	34	32	39
Gaffney	5	13	3	18	6
Greenwood	0	0	7	8	3
Hartsville	2	6	3	1	3
Hillcrest	13	14	5	6	5
Hilton Head	5	6	10	8	9
Irmo	14	16	14	14	11
James L. Mann	7	7	1	10	7
Lancaster	3	11	14	5	4
Laurens	7	4	7	6	8
Lexington	19	15	8	18	19
Lower Richland	8	11	5	5	9
Lugoff-Elgin	10	1	11	15	8
Mauldin	10	8	4	17	20
Middleton	0	0	0	0	0
North Augusta	0	0	4	4	6
Northwestern	28	32	38	28	36
Orangeburg-Wilkinson	4	8	1	12	4
Paul M. Dorman	16	13	8	12	9
Richland Northeast	9	11	9	16	8
Ridgeview	17	20	16	12	13
Riverside	9	1	5	6	17
Rock Hill	22	48	33	32	23
Socastee	11	5	7	13	4
South Aiken	8	6	2	7	2
South Florence	8	10	1	7	7
Spartanburg	0	0	4	6	4
Spring Valley	11	17	15	14	29
Stratford	14	15	15	9	13
Summerville	29	9	15	22	17
Sumter	13	12	14	13	20
W.J. Keenan	3	5	7	1	1
Wade Hampton	6	6	4	8	5
Wando	29	19	22	22	24
West Ashley	11	10	13	10	14
West Florence	2	6	3	6	1
York Comprehensive	12	14	12	15	27

## FIRST-TIME FRESHMEN ENROLLMENT BY MAJOR FALL 2003 - FALL 2007

COLLEGE / DEGREE PROGRAMS	2003	2004	2005	2006	2007	% OF 5 YEAR TOTAL	03 TO 04 % DIFF.	00 TO 04 % DIFF.
<b>ARTS &amp; SCIENCES</b>	<b>376</b>	<b>368</b>	<b>360</b>	<b>452</b>	<b>379</b>	<b>35.9%</b>	<b>-16.2%</b>	<b>0.8%</b>
Biology	108	116	94	95	84	9.2%	-11.6%	-22.2%
Chemistry	8	13	25	33	31	2.0%	-6.1%	287.5%
English	27	25	30	45	33	3.0%	-26.7%	22.2%
Environmental Science	5	1	1	1	2	0.2%	100.0%	N/A
Environmental Studies	*	4	2	2	4	0.2%	N/A	N/A
General Communication Disorders	8	4	6	12	11	0.8%	-8.3%	37.5%
History	18	20	24	33	24	2.2%	-27.3%	33.3%
Human Nutrition	7	10	8	11	14	0.9%	27.3%	100.0%
Integrated Marketing Communication	9	19	11	19	13	1.3%	-31.6%	44.4%
Mass Communication	59	45	37	48	43	4.3%	-10.4%	-27.1%
Mathematics (B.A.)	5	11	18	8	4	0.9%	-50.0%	-20.0%
Mathematics (B.S.)	6	5	0	11	12	0.6%	9.1%	100.0%
Modern Languages	3	7	4	11	12	0.7%	9.1%	300.0%
Philosophy & Religious Studies	3	0	4	3	1	0.2%	-66.7%	-66.7%
Political Science	35	24	27	28	33	2.7%	17.9%	-5.7%
Psychology	56	46	57	55	39	4.7%	-29.1%	-30.4%
Science Communications	0	0	0	0	0	0.0%	0.0%	0.0%
Social Work	6	7	2	12	11	0.7%	-8.3%	83.3%
Sociology	13	11	10	25	8	1.2%	-68.0%	-38.5%
<b>BUSINESS ADMINISTRATION</b>	<b>188</b>	<b>182</b>	<b>184</b>	<b>248</b>	<b>263</b>	<b>19.7%</b>	<b>6.0%</b>	<b>39.9%</b>
Business Administration	140	124	133	180	190	14.2%	5.6%	35.7%
Computer Science	31	20	15	23	20	2.0%	-13.0%	-35.5%
Information Design *					8			
Integrated Marketing Communication	9	19	11	19	13	1.3%	-31.6%	44.4%
Economics				1	3		200.0%	
Sport Management	8	19	25	25	29	2.0%	16.0%	262.5%
<b>EDUCATION</b>	<b>192</b>	<b>189</b>	<b>184</b>	<b>238</b>	<b>209</b>	<b>18.8%</b>	<b>-12.2%</b>	<b>8.9%</b>
Early Childhood Education	61	70	61	70	80	6.3%	14.3%	31.1%
Elementary Education	86	64	62	70	46	6.1%	-34.3%	-46.5%
Middle Level Education				18	11		-38.9%	
Family & Consumer Science (HEED)	0	0	1	2	2	0.1%	0.0%	100.0%
Physical Education	26	27	29	38	28	2.7%	-26.3%	7.7%
Special Education	11	9	6	15	13	1.0%	-13.3%	18.2%
Sport Management	8	19	25	25	29	2.0%	16.0%	262.5%
<b>VISUAL &amp; PERFORMING ARTS</b>	<b>175</b>	<b>171</b>	<b>198</b>	<b>184</b>	<b>179</b>	<b>16.8%</b>	<b>-2.7%</b>	<b>2.3%</b>
Art (B.A.)	10	13	103	22	21	3.1%	-4.5%	110.0%
Art (B.F.A.)	80	79	0	66	92	5.9%	39.4%	15.0%
Art History (B.A.)	1	1	1	4	4	0.2%	0.0%	300.0%
Dance	26	12	16	18	7	1.5%	-61.1%	-73.1%
Music (B.A.)	9	7	13	12	2	0.8%	-83.3%	-77.8%
Music Education (Choral)	9	11	12	19	7	1.1%	-63.2%	-22.2%
Music Education (Instrumental)	7	22	18	20	19	1.6%	-5.0%	171.4%
Music (Performance)	14	12	13	7	8	1.0%	14.3%	-42.9%
Theatre	19	14	22	16	19	1.7%	18.8%	0.0%
<b>PRE-MAJOR</b>	<b>157</b>	<b>129</b>	<b>122</b>	<b>105</b>	<b>86</b>	<b>11.1%</b>	<b>-18.1%</b>	<b>-45.2%</b>
<b>INTERDISCIPLINARY MAJORS</b>	<b>17</b>	<b>38</b>	<b>36</b>	<b>25</b>	<b>42</b>	<b>2.9%</b>	<b>68.0%</b>	<b>147.1%</b>
Integrated Marketing Communication	9	19	11	0	13	1.0%	100.0%	44.4%
Sport Management	8	19	25	25	29	2.0%	16.0%	262.5%

\* New program "Infid began 2007F"

\*\* Discontinued program

**HEADCOUNT ENROLLMENT OF TRANSFERS  
BY S.C. INSTITUTION OF PREVIOUS ENROLLMENT  
FALL 2003 - FALL 2007**

FICE	TECHNICAL COLLEGES	Enrolled Fall 03	Enrolled Fall 04	Enrolled Fall 05	Enrolled Fall 06	Enrolled Fall 07	5 Year % of Total
3996	York	60	77	94	64	76	53.0%
3993	Midlands	13	19	16	24	16	12.9%
3991	Greenville	8	16	10	4	7	6.8%
4920	Trident - Palmer	17	8	15	15	5	9.9%
3992	Piedmont	4	5	2	1		2.2%
4926	Tri-County	2	3	2	3	9	1.8%
7602	Chesterfield-Marlboro	0	1	2	6		1.6%
3994	Spartanburg	4	4	7	5	5	3.6%
4925	Horry-Georgetown	1	4	3	4	2	2.2%
3995	Central Carolina	2	4	1	4	2	2.0%
3990	Florence-Darlington	2	0	3	1	2	1.1%
6815	Orangeburg-Calhoun	2	1	2	2	1	1.3%
9910	Tech. College of Low Country	0	3	0	0		0.5%
10056	Aiken	1	1	0	2	1	0.7%
9932	Williamsburg	0	1	0	0	0	0.2%
4922	South University	0	1	0	1	0	0.4%
5363	Denmark	0	0	0	0	1	0.0%
	<b>Subtotal</b>	<b>116</b>	<b>148</b>	<b>157</b>	<b>136</b>	<b>127</b>	<b>100.0%</b>

FICE	PUBLIC SR COLLEGE & UNIV	Enrolled Fall 03	Enrolled Fall 04	Enrolled Fall 05	Enrolled Fall 06	Enrolled Fall 07	5 Year % of Total
3453	USC-Lancaster	17	8	10	14	14	8.8%
3448	USC-Columbia	17	12	13	9	6	9.2%
3428	College of Charleston	4	10	7	8	5	5.2%
3435	Lander	5	2	3	3	4	2.3%
3451	Coastal Carolina	6	4	7	3	3	3.6%
9226	Francis Marion	5	3	6	4	5	3.2%
3425	Clemson	2	6	6	3	0	3.1%
6951	USC-Upstate	3	4	9	3	0	3.4%
3446	S.C. State	5	2	6	5	3	3.2%
12112	USC-Sumter	3	1	4	2	1	1.8%
3449	USC-Aiken	2	1	2	0	1	0.9%
4927	USC-Union	2	3	1	1	1	1.3%
3454	USC-Salkehatchie	0	0	1	0	0	0.2%
3450	USC-Beaufort	3	1	1	6	1	2.0%
3423	The Citadel	1	0	0	0	0	0.2%
3438	Medical University of S.C.	0	0	0	0	0	0.0%
	<b>Subtotal</b>	<b>75</b>	<b>57</b>	<b>76</b>	<b>61</b>	<b>44</b>	<b>100.0%</b>

**HEADCOUNT ENROLLMENT OF TRANSFERS  
BY S.C. INSTITUTION OF PREVIOUS ENROLLMENT  
FALL 2003 - FALL 2007**

FICE	PRIVATE SR COLLEGES & UNIV	Enrolled Fall 03	Enrolled Fall 04	Enrolled Fall 05	Enrolled Fall 06	Enrolled Fall 07	5 Year % of Total
3447	Spartanburg Methodist	6	14	9	8	10	6.6%
3419	Charleston Southern (Baptist)	2	6	3	1	3	2.2%
3441	North Greenville	2	1	1	2	0	1.1%
3430	Columbia	1	1	1	4	3	1.3%
3440	Newberry	4	2	0	2	5	1.4%
3427	Coker	3	4	1	1	2	1.6%
3420	Benedict	1	2	1	1	2	0.9%
3424	Clafin	0	3	4	5	1	2.2%
3418	Anderson	2	1	3	1	1	1.3%
3436	Limestone	1	0	3	1	0	0.9%
0439	Morris	2	0	0	0	1	0.4%
3434	Furman	0	1	0	1	1	0.4%
3457	Wofford	0	1	0	1	0	0.4%
3432	Erskine	1	3	1	3	2	1.4%
3431	Converse	0	0	0	1	0	0.2%
3445	Presbyterian	0	1	0	0	0	0.2%
3455	Voorhees	0	1	0	0	0	0.2%
3417	Allen	0	0	2	1	0	0.5%
903404	Johnson and Wales	0	0	1	0	0	0.2%
3422	Central Wesleyan	0	1	1	0	0	0.4%
3429	Columbia International University	0	1	1	0	1	0.4%
3421	Bob Jones	0	0	0	0	0	0.0%
<b>Subtotal</b>		<b>25</b>	<b>43</b>	<b>32</b>	<b>33</b>	<b>32</b>	<b>100.0%</b>

SUMMARY	Enrolled	Enrolled	Enrolled	Enrolled	Enrolled	5 Year %
	Fall 03	Fall 04	Fall 05	Fall 06	Fall 07	of Total
Technical Colleges	116	148	157	136	127	39.3%
Public Sr Colleges & Univ.	75	57	76	61	44	19.6%
Private Sr Colleges & Univ.	25	43	32	33	32	10.1%
Out-of-State	92	116	94	77	84	31.0%
<b>Total</b>	<b>308</b>	<b>364</b>	<b>359</b>	<b>307</b>	<b>287</b>	<b>100.0%</b>

**HEADCOUNT ENROLLMENT  
OF FIRST-YEAR GRADUATE STUDENTS AT WINTHROP  
BY S.C. INSTITUTIONS OF PREVIOUS ENROLLMENT  
Fall 2003- Fall 2007**

FICE	PUBLIC SR COLLEGE & UNIV	Enrolled Fall 03	Enrolled Fall 04	Enrolled Fall 05	Enrolled Fall 06	Enrolled Fall 07	5 Year % SC Public	5 Year % of Total
003425	Clemson	5	5	42	11	7	10.8%	5.8%
003451	Coastal Carolina	4	9	4	0	2	2.9%	1.6%
003428	College of Charleston	4	5	9	5	0	3.9%	2.1%
009226	Francis Marion	0	0	10	4	0	2.4%	1.3%
003435	Lander	1	2	56	2	1	10.5%	5.6%
003438	Medical University of S.C.	0	0	0	0	0	0.0%	0.0%
003446	S.C. State	2	2	9	8	3	3.6%	1.9%
003423	The Citadel	1	0	4	1	0	1.0%	0.6%
003449	USC-Aiken	0	1	12	0	1	2.2%	1.2%
003448	USC-Columbia	19	13	56	21	14	18.7%	10.0%
003453	USC-Lancaster	1	1	1	1	0	0.7%	0.4%
006951	USC-Upstate	1	3	3	2	2	1.5%	0.8%
003456	Winthrop	55	49	49	90	87	41.7%	22.4%
	<b>Subtotal</b>	<b>93</b>	<b>90</b>	<b>255</b>	<b>145</b>	<b>117</b>	<b>100.0%</b>	<b>53.7%</b>

FICE	PRIVATE SR COLLEGE & UNIV	Enrolled Fall 03	Enrolled Fall 04	Enrolled Fall 05	Enrolled Fall 06	Enrolled Fall 07	5 Year % SC Private	5 Year % of Total
003418	Anderson College	0	0	10	2	1	12.1%	1.1%
003420	Benedict	0	0	1	2	1	3.0%	0.3%
003421	Bob Jones	0	0	0	0	0	0.0%	0.0%
003419	Charleston Southern	1	1	4	1	0	7.1%	0.6%
003424	Clafflin	1	0	4	1	0	5.1%	0.5%
003427	Coker	0	0	13	4	4	17.2%	1.6%
003429	Columbia International University	0	0	3	0	0	3.0%	0.0%
003430	Columbia	0	1	11	0	0	12.1%	1.1%
003431	Converse	0	0	6	1	1	7.1%	0.6%
003432	Erskine	0	0	8	1	1	9.1%	0.8%
003434	Furman	3	1	0	1	4	5.1%	0.5%
003436	Limestone	0	1	0	2	2	3.0%	0.3%
003439	Morris	1	0	0	2	0	3.0%	0.3%
003440	Newberry	1	0	0	3	1	4.0%	0.4%
003441	North Greenville	0	1	0	0	1	1.0%	0.1%
003445	Presbyterian	1	0	0	1	4	2.0%	0.2%
003422	Southern Wesleyan	0	0	4	0	0	4.0%	0.4%
003455	Vorhees	0	0	0	0	0	0.0%	0.0%
003457	Wofford	0	1	0	1	0	2.0%	0.2%
	<b>Subtotal</b>	<b>8</b>	<b>6</b>	<b>64</b>	<b>21</b>	<b>20</b>	<b>100.0%</b>	<b>8.8%</b>

**SUMMARY**

SUMMARY	Enrolled Fall 03	Enrolled Fall 04	Enrolled Fall 05	Enrolled Fall 06	Enrolled Fall 07	5 Year % of Total
Public Senior Colleges & Univ.	93	90	255	145	117	53.7%
Private Senior Colleges & Univ.	8	6	64	21	20	9.1%
Out-of-State	72	94	94	139	117	36.8%
Unknown	0	0	0	4	3	
<b>Total</b>	<b>173</b>	<b>190</b>	<b>413</b>	<b>309</b>	<b>257</b>	<b>99.6%</b>

NOTE: Only students classified as fully-admitted, degree-seeking students are counted.











**HEADCOUNT ENROLLMENT  
BY GENDER, LEVEL & FULL/PART TIME  
FALL 2007**

LEVEL	2007		
	Male	Female	Total
Full-Time Undergraduate	1,397	3,073	<b>4,470</b>
Part-Time Undergraduate	165	377	<b>542</b>
<b>Subtotal</b>	<b>1,562</b>	<b>3,450</b>	<b>5,012</b>
Full-Time Graduate	132	266	<b>398</b>
Part-Time Graduate	244	728	<b>972</b>
<b>Subtotal</b>	<b>376</b>	<b>994</b>	<b>1,370</b>
<b>Grand Total</b>	<b>1,938</b>	<b>4,444</b>	<b>6,382</b>

**HEADCOUNT ENROLLMENT  
BY GENDER & LEVEL  
FALL 2003 - FALL 2007**

LEVEL	2003		2004		2005		2006		2007	
	Male	Female	Male	Female	Male	Female	Male	Female	Male	Female
Undergraduate	1,558	3,603	1,588	3,625	1,598	3,589	1,571	3,540	1,562	3,450
Graduate	362	1,035	333	901	353	940	348	833	376	994
<b>Total</b>	<b>1,920</b>	<b>4,638</b>	<b>1,921</b>	<b>4,526</b>	<b>1,951</b>	<b>4,529</b>	<b>1,919</b>	<b>4,373</b>	<b>1,938</b>	<b>4,444</b>
<b>Percent</b>	<b>29.3%</b>	<b>70.7%</b>	<b>29.8%</b>	<b>70.2%</b>	<b>30.1%</b>	<b>69.9%</b>	<b>30.5%</b>	<b>69.5%</b>	<b>30.4%</b>	<b>69.6%</b>

## HEADCOUNT ENROLLMENT BY GENDER, CLASS, ETHNICITY & FULL/PART TIME FALL 2007

CLASS/ETHNICITY	FULL-TIME				PART-TIME				TOTAL CLASS	
	FEMALE		MALE		FEMALE		MALE		N	%
	N	%	N	%	N	%	N	%		
<b>FRESHMAN</b>	<b>782</b>	<b>100%</b>	<b>388</b>	<b>100%</b>	<b>12</b>	<b>100%</b>	<b>4</b>	<b>100%</b>	<b>1,186</b>	<b>100%</b>
International	6	0.8%	20	5.2%	0	0.0%	0	0.0%	<b>26</b>	2.2%
Black(Non-Hispanic)	215	27.5%	95	24.5%	5	41.7%	2	50.0%	<b>317</b>	26.7%
Native American	1	0.1%	1	0.3%	0	0.0%	0	0.0%	<b>2</b>	0.2%
Asian	9	1.2%	6	1.5%	0	0.0%	0	0.0%	<b>15</b>	1.3%
Hispanic	21	2.7%	7	1.8%	0	0.0%	1	25.0%	<b>29</b>	2.4%
White(Non-Hispanic)	530	67.8%	259	66.8%	7	58.3%	1	25.0%	<b>797</b>	67.2%
Unknown		0.0%		0.0%		0.0%		0.0%	<b>0</b>	0.0%
<b>SOPHOMORE</b>	<b>799</b>	<b>100%</b>	<b>326</b>	<b>100%</b>	<b>39</b>	<b>100%</b>	<b>12</b>	<b>100%</b>	<b>1,176</b>	<b>100%</b>
International	12	1.5%	8	2.5%	0	0.0%	0	0.0%	<b>20</b>	1.7%
Black(Non-Hispanic)	241	30.2%	89	27.3%	20	51.3%	6	50.0%	<b>356</b>	30.3%
Native American	6	0.8%	2	0.6%	2	5.1%	0	0.0%	<b>10</b>	0.9%
Asian	15	1.9%	2	0.6%	0	0.0%	0	0.0%	<b>17</b>	1.4%
Hispanic	21	2.6%	5	1.5%	0	0.0%	0	0.0%	<b>26</b>	2.2%
White(Non-Hispanic)	504	63.1%	220	67.5%	17	43.6%	6	50.0%	<b>747</b>	63.5%
Unknown		0.0%		0.0%		0.0%		0.0%	<b>0</b>	0.0%
<b>JUNIOR</b>	<b>704</b>	<b>100%</b>	<b>347</b>	<b>100%</b>	<b>45</b>	<b>100%</b>	<b>20</b>	<b>100%</b>	<b>1,116</b>	<b>100%</b>
International	13	1.8%	8	2.3%	0	0.0%	0	0.0%	<b>21</b>	1.9%
Black(Non-Hispanic)	203	28.8%	84	24.2%	14	31.1%	1	5.0%	<b>302</b>	27.1%
Native American	2	0.3%	1	0.3%	1	2.2%	0	0.0%	<b>4</b>	0.4%
Asian	12	1.7%	3	0.9%	1	2.2%	0	0.0%	<b>16</b>	1.4%
Hispanic	8	1.1%	1	0.3%	4	8.9%	0	0.0%	<b>13</b>	1.2%
White(Non-Hispanic)	466	66.2%	250	72.0%	25	55.6%	19	95.0%	<b>760</b>	68.1%
Unknown		0.0%		0.0%		0.0%		0.0%	<b>0</b>	0.0%
<b>SENIOR</b>	<b>784</b>	<b>100%</b>	<b>330</b>	<b>100%</b>	<b>108</b>	<b>100%</b>	<b>57</b>	<b>100%</b>	<b>1,279</b>	<b>100%</b>
International	8	1.0%	12	3.6%	0	0.0%	1	1.8%	<b>21</b>	1.6%
Black(Non-Hispanic)	205	26.1%	86	26.1%	31	28.7%	19	33.3%	<b>341</b>	26.7%
Native American	2	0.3%	1	0.3%	0	0.0%	0	0.0%	<b>3</b>	0.2%
Asian	16	2.0%	3	0.9%	4	3.7%	2	3.5%	<b>25</b>	2.0%
Hispanic	11	1.4%	4	1.2%	3	2.8%	0	0.0%	<b>18</b>	1.4%
White(Non-Hispanic)	542	69.1%	224	67.9%	70	64.8%	35	61.4%	<b>871</b>	68.1%
<b>UNDERGRADUATE SPECIAL</b>	<b>4</b>	<b>100%</b>	<b>6</b>	<b>100%</b>	<b>173</b>	<b>100%</b>	<b>72</b>	<b>100%</b>	<b>255</b>	<b>100%</b>
International	2	50.0%	4	66.7%	2	1.2%	3	4.2%	<b>11</b>	4.3%
Black(Non-Hispanic)	0	0.0%	0	0.0%	54	31.2%	8	11.1%	<b>62</b>	24.3%
Native American	0	0.0%	0	0.0%	1	0.6%	0	0.0%	<b>1</b>	0.4%
Asian	0	0.0%	0	0.0%	2	1.2%	2	2.8%	<b>4</b>	1.6%
Hispanic	0	0.0%	0	0.0%	2	1.2%	3	4.2%	<b>5</b>	2.0%
White(Non-Hispanic)	2	50.0%	2	33%	112	64.7%	56	77.8%	<b>172</b>	67.5%
Unknown		0.0%		0.0%		0.0%		0.0%	<b>0</b>	0.0%
<b>GRADUATE</b>	<b>261</b>	<b>100%</b>	<b>126</b>	<b>100%</b>	<b>230</b>	<b>100%</b>	<b>100</b>	<b>100%</b>	<b>717</b>	<b>100%</b>
International	18	6.9%	12	9.5%	0	0.0%	2	2.0%	<b>32</b>	4.5%
Black(Non-Hispanic)	56	21.5%	21	16.7%	58	25.2%	10	10.0%	<b>145</b>	20.2%
Native American	0	0.0%	1	0.8%	0	0.0%	2	2.0%	<b>3</b>	0.4%
Asian	3	1.1%	2	1.6%	6	2.6%	5	5.0%	<b>16</b>	2.2%
Hispanic	4	1.5%	1	0.8%	1	0.4%	0	0.0%	<b>6</b>	0.8%
White(Non-Hispanic)	180	69.0%	89	71%	165	71.7%	81	81.0%	<b>515</b>	71.8%
Unknown		0.0%		0.0%		0.0%		0.0%	<b>0</b>	0.0%
<b>GRADUATE SPECIAL</b>	<b>5</b>	<b>100%</b>	<b>6</b>	<b>100%</b>	<b>498</b>	<b>100%</b>	<b>144</b>	<b>100%</b>	<b>653</b>	<b>100%</b>
International	0	0.0%	0	0.0%	2	0.4%	0	0.0%	<b>2</b>	0.3%
Black(Non-Hispanic)	2	40.0%	1	16.7%	63	12.7%	14	9.7%	<b>80</b>	12.3%
Native American	0	0.0%	0	0.0%	1	0.2%	0	0.0%	<b>1</b>	0.2%
Asian	0	0.0%	0	0.0%	2	0.4%	1	0.7%	<b>3</b>	0.5%
Hispanic	0	0.0%	1	16.7%	14	2.8%	1	0.7%	<b>16</b>	2.5%
White(Non-Hispanic)	3	60.0%	4	67%	416	83.5%	128	88.9%	<b>551</b>	84.4%
Unknown		0.0%		0%		0.0%		0.0%	<b>0</b>	0.0%
<b>GRAND TOTAL</b>	<b>3,339</b>	<b>52%</b>	<b>1,529</b>	<b>24.0%</b>	<b>1,105</b>	<b>17.3%</b>	<b>409</b>	<b>6.4%</b>	<b>6,382</b>	<b>100%</b>

**HEADCOUNT ENROLLMENT  
BY ETHNIC CATEGORY & FULL/PART TIME  
FALL 2007**

ETHNIC CATEGORY	FULL-TIME		PART-TIME		TOTAL	
	N	%	N	%	N	%
<b>Undergraduate</b>	<b>4,470</b>	<b>100%</b>	<b>542</b>	<b>100%</b>	<b>5,012</b>	<b>100%</b>
White, non-Hispanic	2,999	67.1%	348	64.2%	3,347	66.8%
Black, non-Hispanic	1,218	27.2%	160	29.5%	1,378	27.5%
International	93	2.1%	6	1.1%	99	2.0%
American Indian	16	0.4%	4	0.7%	20	0.4%
Asian/Pacific Islander	66	1.5%	11	2.0%	77	1.5%
Hispanic	78	1.7%	13	2.4%	91	1.8%
Unknown		0.0%		0.0%	0	0.0%
<b>Graduate</b>	<b>398</b>	<b>100%</b>	<b>972</b>	<b>100%</b>	<b>1,370</b>	<b>100%</b>
White, non-Hispanic	276	69.3%	790	81.3%	1,066	77.8%
Black, non-Hispanic	80	20.1%	145	14.9%	225	16.4%
International	30	7.5%	4	0.4%	34	2.5%
American Indian	1	0.3%	3	0.3%	4	0.3%
Asian/Pacific Islander	5	1.3%	14	1.4%	19	1.4%
Hispanic	6	1.5%	16	1.6%	22	1.6%
Unknown		0.0%		0.0%	0	0.0%
<b>Total Students</b>	<b>4,868</b>	<b>100%</b>	<b>1,514</b>	<b>100%</b>	<b>6,382</b>	<b>100%</b>
White, non-Hispanic	3,275	67.3%	1,138	75.2%	4,413	69.1%
Black, non-Hispanic	1,298	26.7%	305	20.1%	1,603	25.1%
International	123	2.5%	10	0.7%	133	2.1%
American Indian	17	0.3%	7	0.5%	24	0.4%
Asian/Pacific Islander	71	1.5%	25	1.7%	96	1.5%
Hispanic	84	1.7%	29	1.9%	113	1.8%
Unknown	0	0.0%	0	0.0%	0	0.0%

**HEADCOUNT ENROLLMENT  
FALL 2003 - FALL 2007**

ETHNIC CATEGORY	2003		2004		2005		2006		2007	
	N	%	N	%	N	%	N	%	N	%
<b>Total Students</b>	<b>6,558</b>	<b>100%</b>	<b>6,447</b>	<b>100%</b>	<b>6,480</b>	<b>100%</b>	<b>6,292</b>	<b>100%</b>	<b>6,382</b>	<b>100%</b>
White, non-Hispanic	4,616	70.4%	4,501	69.8%	4,495	69.4%	4,335	68.9%	4,413	69.1%
Black, non-Hispanic	1,627	24.8%	1,634	25.3%	1,638	25.3%	1,615	25.7%	1,603	25.1%
International	139	2.1%	137	2.1%	158	2.4%	138	2.2%	133	2.1%
American Indian	24	0.4%	30	0.5%	27	0.4%	27	0.4%	24	0.4%
Asian/Pacific Islander	63	1.0%	61	0.9%	83	1.3%	85	1.4%	96	1.5%
Hispanic	78	1.2%	75	1.2%	79	1.2%	92	1.5%	113	1.8%
Unknown	11	0.2%	9	0.1%	0	0.0%	0	0.0%	0	0.0%

**AVERAGE WINTHROP STUDENT AGE  
1998 - 2007**

LEVEL	1998	1999	2000	2001	2002	2003	2004	2005	2006	2007
Undergraduate	21.3	21.6	21.6	21.6	21.6	21.4	21.5	21.5	21.3	21.2
Graduate	32.5	33.5	34.3	34.4	34.5	34.4	33.0	33.0	33.0	32.5

**UNDERGRADUATE HEADCOUNT ENROLLMENT  
BY AGE OF STUDENTS  
FALL 2007**

Age	Winthrop		Winthrop Cum FT %	Winthrop		Winthrop Cum PT %
	FT #	FT %		PT #	PT %	
under 18	13	0.3%	0.3%	173	31.9%	31.9%
18 - 19	1,789	40.0%	40.3%	42	7.7%	39.7%
20 - 21	1,658	37.1%	77.4%	22	4.1%	43.7%
22 - 24	773	17.3%	94.7%	95	17.5%	61.3%
25 - 29	136	3.0%	97.7%	73	13.5%	74.7%
30 - 34	40	0.9%	98.6%	38	7.0%	81.7%
35 - 39	23	0.5%	99.1%	29	5.4%	87.1%
40 - 49	33	0.7%	99.9%	43	7.9%	95.0%
50 - 64	4	0.1%	100.0%	22	4.1%	99.1%
65 and older	1	0.0%	100.0%	5	0.9%	100.0%
Unknown	0	0.0%	100.0%	0	0.0%	100.0%
Total	4,470	100.0%	100.0%	542	100.0%	100.0%

Note: State percentiles are for all S.C. Public Senior Institutions.

**UNDERGRADUATE STUDENTS AGE 25 AND OLDER  
FALL 1998-2007**

	1998	1999	2000	2001	2002	2003	2004	2005	2006	2007
<b>Number</b>	527	550	547	548	555	530	558	521	491	447
<b>Percent</b>	12.14%	11.93%	11.73%	11.33%	10.98%	10.27%	10.81%	10.09%	9.51%	8.92%

**GRADUATE HEADCOUNT ENROLLMENT  
BY AGE OF STUDENTS  
FALL 2007**

Age	Winthrop		Winthrop Cum FT %	Winthrop		Winthrop Cum PT %
	FT #	FT %		PT #	PT %	
under 18	0	0.0%	0.0%	0	0.0%	0.0%
18 - 19	0	0.0%	0.0%	0	0.0%	0.0%
20 - 21	1	0.3%	0.3%	1	0.1%	0.1%
22 - 24	157	39.4%	39.7%	221	22.7%	22.8%
25 - 29	107	26.9%	66.6%	251	25.8%	48.7%
30 - 34	48	12.1%	78.6%	128	13.2%	61.8%
35 - 39	32	8.0%	86.7%	121	12.4%	74.3%
40 - 49	38	9.5%	96.2%	141	14.5%	88.8%
50 - 64	15	3.8%	100.0%	93	9.6%	98.4%
65 and older	0	0.0%	100.0%	16	1.6%	100.0%
Unknown	0	0.0%	100.0%	0	0.0%	100.0%
Total	398	100.0%	100.0%	972	100.0%	100.0%

Note: State percentiles are for all S.C. Public Senior Institutions.

## HEADCOUNT ENROLLMENT BY CLASS & SEMESTER

### FALL

LEVEL / CLASS	2003	2004	2005	2006	2007
<b>Undergraduate</b>	<b>5,161</b>	<b>5,213</b>	<b>5,187</b>	<b>5,111</b>	<b>5,012</b>
New Freshmen	1,074	1,001	1,019	1,183	1,074
Other Freshman	128	156	118	119	112
Sophomore	1,239	1,210	1,107	1,115	1,176
Junior	1,143	1,254	1,227	1,070	1,116
Senior	1,345	1,336	1,422	1,400	1,279
UG Special	232	256	294	224	255
<b>Graduate</b>	<b>1,397</b>	<b>1,234</b>	<b>1,293</b>	<b>1,181</b>	<b>1,370</b>
<b>Total</b>	<b>6,558</b>	<b>6,447</b>	<b>6,480</b>	<b>6,292</b>	<b>6,382</b>

### SPRING

LEVEL / CLASS	2003	2004	2005	2006	2007
<b>Undergraduate</b>	<b>4,749</b>	<b>4,861</b>	<b>4,811</b>	<b>4,704</b>	<b>4,778</b>
Freshman	1,044	1,005	915	901	1,064
Sophomore	986	1,060	1,066	973	997
Junior	1,108	1,141	1,177	1,166	1,045
Senior	1,386	1,422	1,407	1,453	1,449
UG Special	225	233	246	211	223
<b>Graduate</b>	<b>1,033</b>	<b>929</b>	<b>996</b>	<b>891</b>	<b>807</b>
<b>Total</b>	<b>5,782</b>	<b>5,790</b>	<b>5,807</b>	<b>5,595</b>	<b>5,585</b>

### SUMMER

LEVEL / CLASS	2003	2004	2005	2006	2007
<b>Undergraduate</b>	<b>1,309</b>	<b>1,237</b>	<b>1,091</b>	<b>1,051</b>	<b>1,088</b>
Freshman	40	40	25	28	41
Sophomore	243	185	183	126	150
Junior	321	341	268	290	318
Senior	640	605	568	570	534
UG Special	65	66	47	37	45
<b>Graduate</b>	<b>1,186</b>	<b>1,093</b>	<b>864</b>	<b>955</b>	<b>750</b>
<b>Total</b>	<b>2,495</b>	<b>2,330</b>	<b>1,955</b>	<b>2,006</b>	<b>1,838</b>

**FULL-TIME/PART-TIME HEADCOUNT  
ENROLLMENT AND CREDIT HOUR PRODUCTION  
FALL 1998 - FALL 2007**

LEVEL	1998		1999		2000		2001		2002	
	HC	CHP	HC	CHP	HC	CHP	HC	CHP	HC	CHP
<b>Undergraduate</b>	4,340	59,049	4,611	62,943	4,650	64,354	4,838	67,034	5,056	71,006
Full-Time	3,660	55,698	3,940	59,566	4,032	61,159	4,201	63,831	4,448	67,722
Part-Time	680	3,351	671	3,377	618	3,195	637	3,203	608	3,284
<b>Graduate</b>	1,251	6,187	1,229	6,112	1,412	7,644	1,468	6,915	1,406	6,891
Full-Time	251	2,636	281	2,870	289	2,978	270	2,783	303	3,003
Part-Time	1,000	3,551	948	3,242	1,123	4,666	1,198	4,132	1,103	3,888

LEVEL	2003		2004		2005		2006		2007	
	HC	CHP	HC	CHP	HC	CHP	HC	CHP	HC	CHP
<b>Undergraduate</b>	5,161	73,086	5,213	73,807	5,187	73,547	5,101	67,220	4,802	71,211
Full-Time	4,597	70,120	4,617	70,650	4,587	70,507	4,622	64,192	4,461	68,408
Part-Time	564	2,966	596	3,157	600	3,040	479	3,028	341	2,803
<b>Graduate</b>	1,397	7,207	1,234	6,701	1,293	6,793	1,131	3,229	780	7,792
Full-Time	328	3,309	327	3,267	328	3,268	312	2,067	393	4,132
Part-Time	1,069	3,898	907	3,434	965	3,525	819	1,162	387	3,660

Note: Headcount and CHP by classification of student.

**RESIDENCE HALL ENROLLMENT  
COMPARED TO HEADCOUNT ENROLLMENT  
BY CLASS  
FALL 2007**

CLASS LEVEL	MALE RESIDENTS	FEMALE RESIDENTS	TOTAL RESIDENTS	HEADCOUNT ENROLLMENT	% RESIDENTS/ HEADCOUNT
<b>Undergraduates</b>	<b>683</b>	<b>1,654</b>	<b>2,337</b>	<b>5,012</b>	<b>46.6%</b>
New Freshmen	297	651	948	1,064	89.1%
Other Freshmen	28	43	71	122	58.2%
Sophomore	208	605	813	1,176	69.1%
Junior	95	246	341	1,116	30.6%
Senior	50	105	155	1,279	12.1%
Specials	5	4	9	255	3.5%
<b>Graduates</b>	<b>7</b>	<b>17</b>	<b>24</b>	<b>1,370</b>	<b>1.8%</b>
<b>Grand Total</b>	<b>690</b>	<b>1,671</b>	<b>2,361</b>	<b>6,382</b>	<b>37.0%</b>

**FALL 2006**

CLASS LEVEL	MALE RESIDENTS	FEMALE RESIDENTS	TOTAL RESIDENTS	HEADCOUNT ENROLLMENT	% RESIDENTS/ HEADCOUNT
<b>Undergraduates</b>	<b>628</b>	<b>1,629</b>	<b>2,257</b>	<b>5,111</b>	<b>44.2%</b>
New Freshmen	277	796	1,073	1,183	90.7%
Other Freshmen	21	32	53	119	44.5%
Sophomore	176	451	627	1,115	56.2%
Junior	82	192	274	1,070	25.6%
Senior	70	154	224	1,400	16.0%
Specials	2	4	6	224	2.7%
<b>Graduates</b>	<b>8</b>	<b>12</b>	<b>20</b>	<b>1,181</b>	<b>1.7%</b>
<b>Grand Total</b>	<b>636</b>	<b>1,641</b>	<b>2,277</b>	<b>6,292</b>	<b>36.2%</b>

**UNDERGRADUATE  
RESIDENCE/NON-RESIDENCE HALL ENROLLMENT  
FALL 1997 - FALL 2007**

RESIDENCY	1997	1998	1999	2000	2001	2002	2003	2004	2005	2006	2007
Residence Hall	2,054	2,035	2,159	2,152	2,236	2,303	2,466	2,229	2,137	2,257	2,337
% of Total	47.8%	46.9%	46.8%	46.3%	46.2%	45.5%	47.8%	42.8%	41.2%	44.2%	46.6%
Non-Residence Hall	2,240	2,305	2,452	2,498	2,602	2,753	2,695	2,984	3,050	2,854	2,675
% of Total	52.2%	53.1%	53.2%	53.7%	53.8%	54.5%	52.2%	57.2%	58.8%	55.8%	53.4%
<b>Total UG Enrollment</b>	<b>4,294</b>	<b>4,340</b>	<b>4,611</b>	<b>4,650</b>	<b>4,838</b>	<b>5,056</b>	<b>5,161</b>	<b>5,213</b>	<b>5,187</b>	<b>5,111</b>	<b>5,012</b>



**HEADCOUNT ENROLLMENT  
BY STATE OF ORIGIN  
FALL 2003 - FALL 2007**

YEAR	S.C. RESIDENTS						OUT-OF-STATE RESIDENTS						TOTAL STUDENTS					
	UG		GRAD		TOTAL		UG		GRAD		TOTAL		UG		GRAD		TOTAL	
	#	%	#	%	#	%	#	%	#	%	#	%	#	%	#	%	#	%
<b>2003</b>	4,421	80.1%	1101	19.9%	5,522	84.2%	740	71.4%	296	28.6%	1,036	15.8%	5,161	78.7%	1,397	21.3%	6,558	100%
<b>2004</b>	4,514	82.6%	950	17.4%	5,464	84.8%	699	71.1%	284	28.9%	983	15.2%	5,213	80.9%	1,234	19.1%	6,447	100%
<b>2005</b>	4,483	82.1%	980	17.9%	5,463	84.3%	704	69.2%	313	30.8%	1,017	15.7%	5,187	80.0%	1,293	20.0%	6,480	100%
<b>2006</b>	4,450	83.6%	872	16.4%	5,322	84.6%	661	68.1%	309	31.9%	970	15.4%	5,111	81.2%	1,181	18.8%	6,292	100%
<b>2007</b>	4,379	81.2%	1017	18.8%	5,396	84.6%	633	64.2%	353	35.8%	986	15.4%	5,012	78.5%	1,370	21.5%	6,382	100%

Note: State of origin is state of residence at time of entry.

**COUNTRY OF ORIGIN OF INTERNATIONAL STUDENTS  
FALL 2003 - FALL 2007**

COUNTRY	FALL 2003			FALL 2004			FALL 2005			FALL 2006			FALL 2007			% of		
	UG	G	Tot	UG	G	Tot	UG	G	Tot	UG	G	Tot	UG	G	Tot	UG	G	Total
Armenia	0	0	0	0	0	0	1	0	1	0	0	0	0	0	0	0.19%	0.00%	0.14%
Australia	0	0	0	0	0	0	3	0	3	3	0	3	4	0	4	0.00%	0.00%	1.42%
Austria	0	0	0	0	0	0	1	0	1	2	0	2	1	0	1	0.78%	0.00%	0.57%
Bahamas	0	0	0	0	0	0	1	0	1	1	1	2	1	1	2	0.58%	1.04%	0.71%
Bahrain	0	0	0	0	1	1	0	1	1	0	0	0	0	0	0	0.00%	1.04%	0.28%
Bolivia	0	0	0	0	0	0	1	0	1	2	0	2	2	0	2	0.97%	0.00%	0.71%
Brazil	9	1	10	7	0	7	10	2	12	10	2	12	6	3	9	8.19%	4.17%	7.09%
Bulgaria	2	0	2	1	2	3	1	3	4	0	1	1	0	1	1	0.78%	3.65%	1.56%
Cameroon	0	0	0	0	0	0	0	1	1	0	0	0	0	0	0	0.00%	0.52%	0.14%
Canada	21	2	23	19	6	25	24	4	28	20	3	23	18	3	21	19.88%	9.38%	17.02%
Chile	0	0	0	0	0	0	0	0	0	1	0	1	0	0	0	0.19%	0.00%	0.14%
China, Republic of	3	2	5	2	2	4	1	2	3	0	1	1	2	1	3	1.56%	4.17%	2.27%
Colombia	4	1	5	3	0	3	5	1	6	0	1	1	0	2	2	2.34%	2.60%	2.41%
Croatia	0	0	0	1	0	1	1	0	1	1	0	1	0	0	0	0.58%	0.00%	0.43%
Czech Republic	0	0	0	0	0	0	0	0	0	0	0	0	0	0	0	0.00%	0.00%	0.00%
Denmark	0	0	0	1	0	1	2	0	2	1	0	1	1	0	1	0.97%	0.00%	0.71%
Ecuador	0	0	0	0	1	1	1	0	1	0	0	0	0	0	0	0.19%	0.52%	0.28%
El Salvador	0	0	0	0	0	0	1	0	1	0	0	2	0	0	0	0.19%	0.00%	0.43%
Finland	1	0	1	0	0	0	2	0	2	2	0	2	1	0	1	1.17%	0.00%	0.85%
France	4	6	10	10	3	13	6	4	10	11	1	12	8	2	10	7.60%	8.33%	7.80%
Gabon	0	1	1	1	0	1	1	0	1	0	0	0	0	1	1	0.39%	1.04%	0.57%
Georgia	1	0	1	0	0	0	0	0	0	0	0	0	1	0	1	0.39%	0.00%	0.28%
Germany	2	0	2	1	0	1	4	0	4	6	0	6	5	1	6	3.51%	0.52%	2.70%
Ghana	3	0	3	1	0	1	1	0	1	1	0	1	2	0	2	1.56%	0.00%	1.13%
Haiti	0	0	0	0	0	0	0	0	0	0	0	0	0	0	0	0.00%	0.00%	0.00%
Hong Kong	2	0	2	2	0	2	1	0	1	1	1	2	0	1	1	1.17%	1.04%	1.13%
Hungary	1	0	1	0	1	1	0	1	1	0	1	1	0	1	1	0.19%	2.08%	0.71%
Iceland	3	1	4	0	0	0	0	0	0	0	0	0	0	0	0	0.58%	0.52%	0.57%
India	2	3	5	3	5	8	4	5	9	3	3	6	3	3	6	2.92%	9.90%	4.82%
Indonesia	0	0	0	0	0	0	0	0	0	0	0	0	0	0	0	0.00%	0.00%	0.00%
Iran	0	0	0	0	0	0	0	0	0	0	0	0	0	0	0	0.00%	0.00%	0.00%
Ireland	2	0	2	4	0	4	3	0	3	2	0	2	2	0	2	2.53%	0.00%	1.84%
Israel	0	0	0	0	0	0	0	0	0	0	0	0	0	1	1	0.00%	0.52%	0.14%
Italy	2	1	3	0	0	0	0	0	0	0	0	0	0	0	0	0.39%	0.52%	0.43%
Jamaica	3	1	4	2	1	3	0	1	1	2	2	4	0	0	0	1.36%	2.60%	1.70%
Japan	3	1	4	3	1	4	0	2	2	0	2	2	0	0	0	1.17%	3.13%	1.70%
Kazakhstan	1	0	1	0	0	0	0	0	0	0	0	0	1	0	1	0.39%	0.00%	0.28%
Kenya	3	0	3	3	0	3	5	1	6	4	2	6	2	1	3	3.31%	2.08%	2.98%
Korea, Republic of	2	1	3	2	0	2	2	0	2	2	0	2	2	0	2	1.95%	0.52%	1.56%
Kyrgyzstan	0	0	0	0	0	0	0	0	0	1	0	1	0	0	0	0.19%	0.00%	0.14%
Lebanon	0	0	0	0	0	0	0	0	0	0	0	0	0	0	0	0.00%	0.00%	0.00%
Liberia	2	2	4	2	1	3	2	1	3	1	0	1	1	0	1	1.56%	2.08%	1.70%
Lithuania	0	0	0	0	0	0	0	0	0	0	1	1	0	1	1	0.00%	1.04%	0.28%
Macedonia	0	0	0	0	0	0	0	0	0	0	0	0	1	0	1	0.19%	0.00%	0.14%
Morocco	0	1	1	1	0	1	0	0	0	0	0	0	0	0	0	0.19%	0.52%	0.28%
Mexico	0	0	0	0	0	0	0	0	0	0	1	1	0	0	0	0.00%	0.52%	0.14%
Nepal	1	0	1	1	0	1	1	0	1	1	0	1	0	0	0	0.78%	0.00%	0.57%
Netherlands	0	1	1	0	0	0	1	1	2	1	1	2	1	0	1	0.58%	1.56%	0.85%
New Zealand	2	0	2	1	0	1	1	0	1	1	0	1	1	0	1	1.17%	0.00%	0.85%
Niger	0	1	1	0	1	1	0	0	0	0	0	0	0	0	0	0.00%	1.04%	0.28%
Nigeria	3	1	4	3	2	5	3	0	3	3	0	3	1	1	2	2.53%	2.08%	2.41%
Norway	0	0	0	0	0	0	1	3	4	0	0	0	3	0	3	0.78%	1.56%	0.99%
Panama	0	0	0	0	0	0	0	0	0	0	0	0	0	0	0	0.00%	0.00%	0.00%
Peru	1	1	2	3	2	5	1	2	3	1	3	4	1	1	2	1.36%	4.69%	2.27%
Philippines	0	1	1	0	2	2	1	1	2	0	1	1	0	2	2	0.19%	3.65%	1.13%
Poland	2	1	3	2	1	3	0	2	2	0	1	1	0	0	0	0.78%	2.60%	1.28%
Portugal	0	1	1	0	0	0	0	0	0	0	0	0	0	0	0	0.00%	0.52%	0.14%
Romania	0	0	0	0	0	0	4	0	4	7	0	7	0	1	1	2.14%	0.52%	1.70%
Russia	0	1	1	1	0	1	1	0	1	0	0	0	0	0	0	0.39%	0.52%	0.43%
Saudi Arabia	1	0	1	0	0	0	0	0	0	0	1	1	15	3	18	3.12%	2.08%	2.84%
Senegal	0	0	0	0	1	1	1	1	2	1	0	1	1	0	1	0.58%	1.04%	0.71%
Sierra Leone	0	0	0	0	1	1	0	1	1	0	0	0	0	0	0	0.00%	1.04%	0.28%
Slovakia	0	1	1	0	1	1	0	0	0	0	0	0	0	0	0	0.00%	1.04%	0.28%
South Africa	0	0	0	1	0	1	1	0	1	1	0	1	0	0	0	0.58%	0.00%	0.43%
Spain	1	2	3	2	2	4	2	1	3	3	0	3	2	0	2	1.95%	2.60%	2.13%
Sri Lanka	0	0	0	0	0	0	0	0	0	0	0	0	0	0	0	0.00%	0.00%	0.00%
Swaziland	0	0	0	0	0	0	0	0	0	0	0	0	0	1	0	0.19%	0.00%	0.14%
Sweden	1	0	1	0	0	0	1	0	1	1	0	1	2	0	2	0.97%	0.00%	0.71%
Switzerland	0	0	0	1	0	1	1	0	1	1	0	1	1	0	1	0.78%	0.00%	0.57%
Taiwan	0	2	2	0	2	2	0	1	1	0	0	0	0	0	0	0.00%	2.60%	0.71%
Tanzania	2	0	2	1	0	1	1	0	1	1	0	1	0	0	0	0.97%	0.00%	0.71%
Thailand	0	1	1	0	2	2	0	1	1	0	0	0	0	0	0	0.00%	2.08%	0.57%
Tonga	0	0	0	0	0	0	1	0	1	0	0	0	0	0	0	0.19%	0.00%	0.14%
Trinidad and Tobago	0	0	0	0	0	0	0	0	0	0	0	0	0	1	1	0.00%	0.52%	0.14%
Uganda	0	0	0	0	0	0	0	0	0	2	0	2	2	0	2	0.78%	0.00%	0.57%
Ukraine	1	0	1	1	1	2	0	1	1	0	1	1	0	0	0	0.39%	1.56%	0.71%
United Kingdom	7	2	9	6	1	7	4	0	4	2	0	2	0	0	0	3.70%	1.56%	3.12%
Uzbekistan	3	10	13	3	0	3	1	1	2	1	0	1	1	0	1	0.78%	0.00%	0.57%

Venezuela	0	0	0	0	0	0	0	0	0	0	0	0	2	1	0	1	0.19%	0.00%	0.43%
Vietnam	0	0	0	0	0	0	0	0	0	0	0	0	0	0	1	1	0.00%	0.52%	0.14%
Yugoslavia	0	0	0	0	0	0	0	0	0	0	0	0	0	0	0	0	0.00%	0.00%	0.00%
Zambia	0	0	0	0	0	0	1	0	1	1	0	1	1	0	1	0	0.58%	0.00%	0.43%
Zimbabwe	1	0	1	1	0	1	2	0	2	2	0	2	1	1	2	1.36%	0.52%	1.13%	
<b>TOTAL</b>	<b>99</b>	<b>40</b>	<b>139</b>	<b>94</b>	<b>43</b>	<b>137</b>	<b>114</b>	<b>44</b>	<b>158</b>	<b>107</b>	<b>31</b>	<b>138</b>	<b>99</b>	<b>34</b>	<b>133</b>	<b>100.0%</b>	<b>100.0%</b>	<b>100.0%</b>	

# GEOGRAPHICAL DISTRIBUTION OF STUDENTS BY STATE FALL 2003 - FALL 2007

STATE	FALL 2003			FALL 2004			FALL 2005			FALL 2006			FALL 2007			% of 5 Year Total		
	UG	G	Total	UG	G	Total	UG	G	Total	UG	G	Total	UG	G	Total	UG	G	Total
Alabama	6	1	7	4	1	5	4	0	4	3	0	3	2	0	2	0.08%	0.04%	0.07%
Alaska	1	0	1	2	0	2	1	0	1	1	0	1	1	0	1	0.02%	0.00%	0.02%
Arizona	2	0	2	3	0	3	3	0	3	3	0	3	2	0	2	0.05%	0.00%	0.04%
Arkansas	1	1	2	0	0	0	0	0	0	1	0	1	1	1	2	0.01%	0.02%	0.01%
California	6	1	7	5	0	5	4	1	5	6	1	7	2	3	5	0.10%	0.06%	0.09%
Colorado	1	0	1	1	0	1	2	0	2	3	0	3	3	0	3	0.03%	0.00%	0.03%
Connecticut	8	0	8	7	0	7	8	0	8	4	0	4	5	0	5	0.13%	0.00%	0.10%
Delaware	3	0	3	4	0	4	4	0	4	2	0	2	1	0	1	0.06%	0.00%	0.05%
Florida	56	6	62	37	4	41	42	5	47	39	2	41	26	4	30	0.84%	0.33%	0.74%
Georgia	73	9	82	63	6	69	63	6	69	50	6	56	58	13	71	1.20%	0.53%	1.07%
Hawaii	1	0	1	2	0	2	2	0	2	2	0	2	2	0	2	0.03%	0.00%	0.03%
Idaho	0	0	0	0	0	0	1	0	1	1	0	1	0	0	0	0.01%	0.00%	0.01%
Illinois	12	3	15	8	2	10	9	3	12	8	1	9	7	0	7	0.18%	0.18%	0.18%
Indiana	6	0	6	3	0	3	3	0	3	2	1	3	3	3	6	0.07%	0.02%	0.06%
Iowa	2	0	2	4	0	4	6	0	6	5	0	5	3	1	4	0.08%	0.00%	0.07%
Kansas	5	1	6	3	1	4	0	1	1	1	0	1	4	0	4	0.04%	0.06%	0.05%
Kentucky	6	2	8	5	3	8	8	1	9	5	1	6	4	0	4	0.12%	0.14%	0.12%
Louisiana	2	1	3	1	0	1	4	0	4	1	0	1	1	0	1	0.04%	0.02%	0.03%
Maine	3	0	3	1	0	1	0	0	0	1	0	1	2	0	2	0.02%	0.00%	0.02%
Maryland	58	1	59	59	2	61	49	2	51	51	1	52	57	1	58	1.05%	0.12%	0.86%
Massachusetts	2	0	2	8	0	8	8	0	8	10	0	10	8	1	9	0.14%	0.00%	0.11%
Michigan	3	1	4	2	1	3	2	5	7	4	3	7	5	6	11	0.05%	0.20%	0.08%
Minnesota	6	0	6	5	0	5	8	0	8	3	0	3	2	0	2	0.11%	0.00%	0.09%
Mississippi	6	0	6	4	0	4	2	0	2	3	0	3	2	0	2	0.07%	0.00%	0.06%
Missouri	1	1	2	3	1	4	1	1	2	3	1	4	3	0	3	0.04%	0.08%	0.05%
Montana	0	0	0	2	0	2	1	0	1	0	0	0	0	0	0	0.01%	0.00%	0.01%
Nebraska	4	0	4	2	0	2	0	1	1	1	1	2	1	0	1	0.03%	0.04%	0.03%
Nevada	0	0	0	0	0	0	5	0	5	0	0	0	1	0	1	0.02%	0.00%	0.02%
New Hampshire	0	0	0	2	0	2	2	0	2	9	0	9	8	0	8	0.06%	0.00%	0.05%
New Jersey	14	0	14	12	1	13	14	2	16	19	2	21	14	1	15	0.28%	0.10%	0.25%
New Mexico	3	0	3	3	1	4	3	1	4	3	0	3	1	0	1	0.06%	0.04%	0.05%
New York	35	3	38	30	9	39	27	14	41	31	7	38	34	1	35	0.59%	0.65%	0.60%
North Carolina	130	212	342	130	200	330	135	200	335	121	233	354	128	260	388	2.49%	16.53%	5.27%
Ohio	40	3	43	48	2	50	49	6	55	43	2	45	41	3	44	0.87%	0.25%	0.75%
Oklahoma	3	0	3	3	0	3	1	0	1	1	0	1	0	0	0	0.04%	0.00%	0.03%
Oregon	2	0	2	4	0	4	3	0	3	3	0	3	0	0	0	0.06%	0.00%	0.05%
Pennsylvania	25	2	27	25	1	26	21	4	25	20	3	23	18	7	25	0.44%	0.20%	0.39%
Rhode Island	1	1	2	2	1	3	1	0	1	1	1	2	1	1	2	0.02%	0.06%	0.03%
South Carolina	4,421	1,101	5,522	4,514	950	5,464	4,483	980	5,463	4,450	872	5,322	4,379	1,017	5,396	86.26%	76.35%	84.30%
South Dakota	0	0	0	0	0	0	0	0	0	0	0	0	0	0	0	0.00%	0.00%	0.00%
Tennessee	16	1	17	18	2	20	21	2	23	15	2	17	11	1	12	0.34%	0.14%	0.30%
Texas	9	0	9	10	0	10	9	0	9	11	1	12	12	1	13	0.19%	0.02%	0.15%
Utah	2	0	2	2	0	2	2	0	2	2	0	2	1	0	1	0.04%	0.00%	0.03%
Vermont	2	0	2	3	0	3	2	0	2	1	0	1	1	0	1	0.04%	0.00%	0.03%
Virginia	61	4	65	53	1	54	53	6	59	51	6	57	46	7	53	1.05%	0.33%	0.91%
Washington	4	0	4	4	0	4	2	0	2	1	0	1	1	0	1	0.05%	0.00%	0.04%
West Virginia	13	2	15	13	1	14	9	2	11	7	2	9	7	2	9	0.20%	0.14%	0.19%
Wisconsin	4	0	4	4	1	5	2	2	4	1	1	2	1	1	2	0.05%	0.08%	0.06%
Wyoming	0	0	0	0	0	0	0	0	0	0	0	0	0	0	0	0.00%	0.00%	0.00%
<b>Total U.S. States</b>	<b>5,059</b>	<b>1,357</b>	<b>6,416</b>	<b>5,118</b>	<b>1,191</b>	<b>6,309</b>	<b>5,079</b>	<b>1,245</b>	<b>6,324</b>	<b>5,003</b>	<b>1,150</b>	<b>6,153</b>	<b>4,910</b>	<b>1,335</b>	<b>6,245</b>	<b>97.81%</b>	<b>96.69%</b>	<b>97.59%</b>
Dist. of Columbia	1	0	1	1	0	1	1	0	1	1	0	1	0	0	0	0.02%	0.00%	0.02%
International	99	40	139	94	43	137	148	55	203	107	31	138	99	34	133	2.16%	3.31%	2.39%
Puerto Rico	0	0	0	0	0	0	0	0	0	0	0	0	0	0	0	0.00%	0.00%	0.00%
Virgin Islands of the U.S	0	0	0	0	0	0	0	0	0	0	0	0	0	0	0	0.00%	0.00%	0.00%
Unknown	2	0	2	0	0	0	0	0	0	0	0	0	3	1	4	0.01%	0.00%	0.01%
<b>Grand Total</b>	<b>5,161</b>	<b>1,397</b>	<b>6,558</b>	<b>5,213</b>	<b>1,234</b>	<b>6,447</b>	<b>5,228</b>	<b>1,300</b>	<b>6,528</b>	<b>5,111</b>	<b>1,181</b>	<b>6,292</b>	<b>5,012</b>	<b>1,370</b>	<b>6,382</b>	<b>100.0%</b>	<b>100.0%</b>	<b>100.0%</b>

**GEOGRAPHICAL DISTRIBUTION OF STUDENTS  
BY S.C. COUNTY  
FALL 2002 - FALL 2007**

COUNTY	FALL 2003			FALL 2004			FALL 2005			FALL 2006			FALL 2007			% of 5 Year Total		
	UG	G	Total	UG	G	Total	UG	G	Total	UG	G	Total	UG	G	Total	UG	G	Total
Abbeville	14	0	14	12	0	12	16	12	28	9	13	22	8	9	17	0.23%	0.53%	0.29%
Aiken	105	14	119	97	13	110	80	11	91	84	12	96	74	6	80	1.71%	0.86%	1.54%
Allendale	9	2	11	5	0	5	8	0	8	4	0	4	4	0	4	0.12%	0.03%	0.10%
Anderson	63	7	70	70	11	81	62	23	85	80	14	94	84	25	109	1.40%	1.24%	1.37%
Bamberg	2	1	3	3	1	4	3	0	3	2	0	2	10	0	10	0.08%	0.03%	0.07%
Barnwell	18	2	20	18	0	18	12	3	15	10	5	15	8	12	20	0.26%	0.34%	0.27%
Beaufort	65	132	197	69	73	142	91	45	136	89	3	92	93	73	166	1.58%	5.03%	2.28%
Berkeley	96	8	104	105	7	112	125	4	129	123	3	126	119	3	122	2.21%	0.39%	1.84%
Calhoun	7	3	10	11	2	13	13	0	13	12	1	11	8	1	9	0.20%	0.11%	0.17%
Charleston	280	23	303	257	20	277	280	18	298	296	19	315	293	14	307	5.47%	1.45%	4.66%
Cherokee	30	12	42	39	7	46	33	3	36	45	2	47	47	3	50	0.76%	0.42%	0.69%
Chester	119	32	151	128	31	159	109	32	141	113	14	127	102	17	119	2.22%	1.95%	2.17%
Chesterfield	80	20	100	71	26	97	73	16	89	76	16	0	69	19	88	1.44%	1.50%	1.16%
Clarendon	26	6	32	22	4	26	20	11	31	21	8	29	18	13	31	0.42%	0.65%	0.46%
Colleton	28	3	31	33	1	34	33	2	35	31	2	33	24	4	28	0.58%	0.19%	0.50%
Darlington	55	12	67	48	10	58	35	2	37	30	7	37	37	10	47	0.80%	0.63%	0.76%
Dillon	27	8	35	24	12	36	23	14	37	26	14	40	16	12	28	0.45%	0.93%	0.55%
Dorchester	127	5	132	111	7	118	125	8	133	135	4	139	135	8	143	2.46%	0.49%	2.07%
Edgefield	7	0	7	9	0	9	8	0	8	8	1	9	7	1	8	0.15%	0.03%	0.13%
Fairfield	27	12	39	29	5	34	28	11	39	24	10	34	32	2	34	0.55%	0.62%	0.56%
Florence	103	21	124	92	16	108	77	11	88	89	13	102	75	11	86	1.70%	1.11%	1.58%
Georgetown	41	5	46	56	4	60	64	1	65	58	3	61	63	1	64	1.10%	0.22%	0.92%
Greenville	344	31	375	352	27	379	316	29	345	297	37	334	294	30	324	5.34%	1.93%	5.46%
Greenwood	26	13	39	32	15	47	33	74	107	27	66	93	24	54	78	1.60%	3.06%	1.13%
Hampton	7	2	9	5	2	7	8	3	11	2	2	4	1	1	2	0.18%	0.97%	0.10%
Horry	81	42	123	87	43	130	82	25	107	97	11	108	87	6	93	1.35%	1.88%	1.74%
Jasper	8	2	10	6	0	6	2	2	4	4	1	5	1	3	4	0.42%	0.17%	0.09%
Kershaw	77	62	139	60	52	112	63	39	102	63	44	107	71	54	125	1.03%	3.09%	1.82%
Lancaster	111	34	145	159	49	208	150	36	186	138	34	172	152	37	189	2.76%	2.93%	2.80%
Laurens	46	4	50	41	4	45	39	5	44	33	8	41	38	3	41	0.77%	0.37%	0.69%
Lee	10	3	13	11	2	13	10	0	10	14	3	17	7	3	10	0.20%	0.17%	0.20%
Lexington	271	61	332	268	92	360	257	90	347	264	91	355	249	106	355	5.10%	6.80%	5.44%
Marion	14	1	15	13	0	13	15	1	16	19	6	25	19	4	23	0.31%	0.19%	0.29%
Marlboro	4	0	4	3	0	3	1	0	1	1	0	1	1	2	3	0.04%	0.03%	0.04%
McCormick	24	5	29	23	4	27	29	2	31	37	5	42	24	7	31	0.53%	0.36%	0.50%
Newberry	17	9	26	17	7	24	20	8	28	17	9	26	23	3	26	0.37%	0.56%	0.40%
Oconee	54	2	56	66	4	70	56	5	61	50	4	54	51	2	53	1.08%	0.26%	0.91%
Orangeburg	58	15	73	67	10	77	59	8	67	63	19	82	60	2	62	1.20%	0.83%	1.12%
Pickens	59	3	62	55	4	59	49	3	52	67	2	69	62	5	67	1.14%	0.26%	0.96%
Richland	396	62	458	422	68	490	402	74	476	422	75	497	408	89	497	6.63%	4.39%	7.52%
Saluda	17	1	18	15	4	19	14	1	15	14	3	17	10	2	12	1.82%	1.51%	0.25%
Spartanburg	164	28	192	158	15	173	145	14	159	158	13	171	155	12	167	3.04%	1.27%	2.68%
Sumter	111	17	128	119	9	128	110	9	119	121	8	129	127	12	139	2.29%	0.85%	2.00%
Union	32	9	41	30	11	41	53	5	58	38	4	42	41	3	44	0.76%	0.49%	0.70%
Williamsburg	28	2	30	26	2	28	29	1	30	27	0	27	20	0	20	0.51%	0.08%	0.42%
York	1,133	365	1,498	1,170	276	1,446	1,223	319	1,542	1,112	263	1,375	1,128	333	1,461	22.45%	24.03%	22.77%
<b>Total S.C.</b>	<b>4,421</b>	<b>1,101</b>	<b>5,522</b>	<b>4,514</b>	<b>950</b>	<b>5,464</b>	<b>4,483</b>	<b>980</b>	<b>5,463</b>	<b>4,450</b>	<b>872</b>	<b>5,322</b>	<b>4,379</b>	<b>1,017</b>	<b>5,396</b>	<b>86.62%</b>	<b>75.98%</b>	<b>84.48%</b>
Out-of-State	641	256	897	605	241	846	590	269	859	554	278	832	534	319	853	11.38%	21.05%	13.33%
International	99	40	139	94	43	137	114	44	158	107	31	138	99	34	133	2.00%	2.97%	2.19%
<b>Grand Total</b>	<b>5,161</b>	<b>1,397</b>	<b>6,558</b>	<b>5,213</b>	<b>1,234</b>	<b>6,447</b>	<b>5,187</b>	<b>1,293</b>	<b>6,480</b>	<b>5,111</b>	<b>1,181</b>	<b>6,292</b>	<b>5,012</b>	<b>1,370</b>	<b>6,382</b>	<b>100.0%</b>	<b>100.0%</b>	<b>100.0%</b>

## UNDERGRADUATE HEADCOUNT ENROLLMENT FALL 2003 - FALL 2007

COLLEGE / DEGREE PROGRAMS	2003	2004	2005	2006	2007	% OF 5 YEAR TOTAL	06 TO 07 % DIFF.
<b>ARTS &amp; SCIENCES</b>	<b>2,029</b>	<b>2,056</b>	<b>2,056</b>	<b>2,054</b>	<b>1,975</b>	<b>37.2%</b>	<b>-3.8%</b>
Biology	334	345	320	338	320	6.1%	-5.3%
Chemistry	36	45	73	86	87	1.2%	1.2%
English	148	142	164	153	137	2.7%	-10.5%
Environmental Science (B.S.)	12	14	14	7	13	0.2%	85.7%
Environmental Studies (B.A.)	14	14	10	15	19	0.3%	26.7%
General Communication Disorders	64	59	56	72	65	1.2%	-9.7%
History	149	163	169	178	152	3.0%	-14.6%
Human Nutrition	50	56	59	65	92	1.2%	41.5%
Integrated MKTG Communication *	77	112	33	33	47	1.1%	42.4%
Mass Communication	97	71	73	72	71	1.4%	-1.4%
Mathematics (B.A.)	36	31	40	23	32	0.6%	39.1%
Mathematics (B.S.)	25	20	15	21	26	0.4%	23.8%
Medical Technology	1	*	*	*	0	0.0%	N/A
Modern Languages	45	46	65	59	49	1.0%	-16.9%
Philosophy & Religious Studies	25	26	37	33	23	0.5%	-30.3%
Political Science	182	163	175	141	147	3.0%	4.3%
Pre-Engineering	14	11	11	7	12	0.2%	71.4%
Pre-Integrated Marketing	61	78	75	94	74	1.4%	-21.3%
Pre-Mass Communication	113	133	109	113	108	2.1%	-4.4%
Psychology	284	291	313	297	266	5.3%	-10.4%
Science Communications	3	1	2	2	4	0.0%	100.0%
Social Work	114	100	97	92	99	1.8%	7.6%
Sociology	145	135	146	153	132	2.6%	-13.7%
<b>BUSINESS ADMINISTRATION</b>	<b>1,192</b>	<b>1,103</b>	<b>1,107</b>	<b>1,157</b>	<b>1,186</b>	<b>21.0%</b>	<b>2.5%</b>
Business Administration	923	884	897	939	923	16.7%	-1.7%
Computer Science	100	77	76	78	74	1.5%	-5.1%
Economics	9	7	8	17	21	0.2%	23.5%
Information Design**					14	0.1%	N/A
Integrated MKTG Communication *	77	34	33	33	47	0.8%	42.4%
Sport Manangement *	83	101	93	90	107	1.7%	18.9%
<b>EDUCATION</b>	<b>978</b>	<b>994</b>	<b>969</b>	<b>943</b>	<b>945</b>	<b>17.6%</b>	<b>0.2%</b>
Early Childhood Education	258	272	261	273	283	4.9%	3.7%
Elementary Education	361	322	300	261	232	5.4%	-11.1%
Family & Consumer Science	74	83	92	89	69	1.5%	-22.5%
Middle Level Education	*	*	19	40	43	0.4%	N/A
Physical Education	122	140	146	134	153	2.5%	14.2%
Special Education	80	76	58	57	58	1.2%	1.8%
Sport Manangement *	83	101	93	89	107	1.7%	20.2%
<b>VISUAL &amp; PERFORMING ARTS</b>	<b>810</b>	<b>831</b>	<b>853</b>	<b>827</b>	<b>790</b>	<b>15.0%</b>	<b>-4.5%</b>
Art (B.A.)	109	106	111	104	98	1.9%	-5.8%
Art (B.F.A.)	347	355	358	346	356	6.4%	2.9%
Art History (B.A.)	15	23	26	24	24	0.4%	0.0%
Dance	77	77	72	76	59	1.3%	-22.4%
Music (B.A.)	46	41	50	51	33	0.8%	-35.3%
Music Education (Choral)	33	40	41	44	34	0.7%	-22.7%
Music Education (Instrumental)	37	54	58	57	67	1.0%	17.5%
Music (Performance)	36	40	32	32	32	0.6%	0.0%
Theatre	110	95	105	93	87	1.8%	-6.5%
<b>PRE-MAJOR</b>	<b>429</b>	<b>442</b>	<b>453</b>	<b>405</b>	<b>462</b>	<b>8.0%</b>	<b>14.1%</b>
New Start Undecided	2	2	1	1	112	0.4%	11100.0%
Pre-Business	9	13	9	6	11	0.2%	83.3%
Pre-Education	9	4	4	3	3	0.1%	0.0%
Pre-Major	161	149	142	118	96	2.4%	-18.6%
Pre-Nursing	26	34	17	6	0	0.3%	-100.0%
Distance Learning	200	217	255	255	218	4.2%	-14.5%
Non-Degree Transient	15	15	13	13	11	0.2%	-15.4%
Non-Degree Undergraduate	7	8	12	3	11	0.1%	266.7%

Note: Counts include double majors and students working toward two degrees.

\* Interdisciplinary program

**GRADUATE HEADCOUNT ENROLLMENT  
FALL 2003 - FALL 2007**

COLLEGE / DEGREE PROGRAMS	2003	2004	2005	2006	2007	% OF 5-YEAR TOTAL	04 TO 05 % DIFF.
<b>ARTS AND SCIENCES</b>	<b>129</b>	<b>124</b>	<b>131</b>	<b>148</b>	<b>196</b>	<b>13.2%</b>	<b>32.4%</b>
Biology	16	15	21	12	16	1.5%	33.3%
English	12	14	16	15	17	1.3%	13.3%
History	11	11	13	8	6	0.9%	-25.0%
Human Nutrition	35	27	27	25	32	2.7%	28.0%
Human Nutrition - Certification	*	1	3		1	0.1%	100.0%
Liberal Arts	21	20	19	20	23	1.9%	15.0%
Mathematics	3	6	2	***		0.2%	0.0%
S.S.P./ M.S.School Psychology	24	26	27	30	31	2.5%	3.3%
MSW Social Work	*	*	*	32	63		
Spanish	7	4	3	6	7	0.5%	16.7%
<b>BUSINESS ADMINISTRATION</b>	<b>228</b>	<b>236</b>	<b>233</b>	<b>196</b>	<b>192</b>	<b>19.7%</b>	<b>-2.0%</b>
Business Administration	197	206	201	162	158	16.8%	-2.5%
Executive MBA	19	22	26	30	32	2.3%	6.7%
Software Development	12	8	6	4	2	0.6%	-50.0%
<b>EDUCATION</b>	<b>309</b>	<b>301</b>	<b>294</b>	<b>299</b>	<b>275</b>	<b>26.9%</b>	<b>-8.0%</b>
Counseling & Dev (Guidance)	36	45	46	39	38	3.7%	-2.6%
Curriculum and Instruction (Med)	##	21	27	36	33	2.1%	-8.3%
Educational Leadership (MEd)	**	**	**	**	70	1.3%	100.0%
Educational Administration (EdS)						5.5%	0.0%
Educational Leadership	71	84	67	79		5.8%	-100.0%
Elementary Education ##	13	3				0.3%	0.0%
Middle Level Education	18	16	32	30	19	7.3%	-36.7%
Physical Education	15	12	11	18	19	5.2%	5.6%
Reading	78	55	41	18	19	3.8%	5.6%
Secondary Education (MAT)	****	****	****	****		4.1%	N/A
Biology	3	3	2	4	2	5.6%	-50.0%
Business	6	10	11	5	4	5.8%	-20.0%
English	14	14	11	7	9	5.5%	28.6%
Family Consumer Science	1	0	2	1	2	4.8%	100.0%
French	1	0	2	1	1	4.7%	0.0%
Mathematics	1	0	2	4	6	9.4%	50.0%
Social Studies	16	12	12	22	17	11.3%	-22.7%
Spanish	*	1	1		2	10.7%	100.0%
Secondary Education (MEd) ##	11	1				0.2%	0.0%
Special Education	15	14	15	21	18	1.5%	-14.3%
Teacher Education Art K-12	6	5	5	5	5	9.9%	0.0%
Teacher Education Dance K-12	0	0	0	0		10.3%	0.0%
Teacher Education Music K-12	3	4	3	4	5	10.3%	25.0%
Teacher Education Physical Ed. K-12	1	1	4	5	6	0.3%	20.0%
<b>VISUAL &amp; PERFORMING ARTS</b>	<b>31</b>	<b>56</b>	<b>56</b>	<b>59</b>	<b>64</b>	<b>4.8%</b>	<b>8.5%</b>
Art Administration	*	17	22	24	19	1.5%	-20.8%
Art Education	4	7	5	9	9	0.6%	0.0%
Conducting	7	11	11	6	10	0.8%	66.7%
Fine Arts	10	11	9	5	5	0.7%	0.0%
Music Education	1	2	3	2	6	0.3%	200.0%
Music Performance	9	8	6	13	15	0.9%	15.4%
<b>UNDESIGNATED/UNASSIGNED</b>	<b>314</b>	<b>212</b>	<b>282</b>	<b>488</b>	<b>643</b>	<b>35.3%</b>	<b>31.8%</b>
ACRT	3	3	2	0	7	0.3%	100.0%
GNDG	300	202	273	456	595	33.2%	30.5%
ICRT	3	2	5	5	9	0.4%	80.0%
OBRG	*	*	*	15	0		-100.0%
RCRT	1	1	1	1	4	0.1%	300.0%
TRNS	7	4	1	11	2	0.5%	-81.8%
TESL					26	0.5%	100.0%
<b>TOTAL</b>	<b>1,011</b>	<b>929</b>	<b>996</b>	<b>1,190</b>	<b>1,370</b>	<b>100.0%</b>	<b>15.1%</b>

\* New program

\*\* MEd EDAS changed to MEd EDLD in Fall 1999

\*\*\* Program discontinued

\*\*\*\* Concentrations broken out into separate program options

## ELEM (MEd) & SCED (MEd) changed to options under Curriculum and Instruction (MEd)

5496 = 5-YEAR TOTAL

**Ratio of FTE Students to FTE Teaching Faculty  
FALL 2003 - FALL 2007**

(Performance Funding Indicator 3A)

	FALL 2003	FALL 2004	FALL 2005	FALL 2006	FALL 2007
<b>Credit Hour Production</b>	<b>81,122</b>	<b>80,292</b>	<b>80,340</b>	<b>79,630</b>	<b>78,570</b>
Undergraduate	73,701	73,924	73,547	73,391	71,225
Graduate	7,421	6,368	6,793	6,239	7,345
<b>FTE Students*</b>	<b>5,532</b>	<b>5,459</b>	<b>5,469</b>	<b>5,413</b>	<b>5,360</b>
Undergraduate	4,913	4,928	4,903	4,893	4,748
Graduate	618	531	566	520	612
<b>FTE Teaching Faculty**</b>	<b>368</b>	<b>369</b>	<b>386</b>	<b>362</b>	<b>374</b>
<b>FTE Students/FTE Faculty</b>	<b>15.0</b>	<b>14.8</b>	<b>14.2</b>	<b>15.0</b>	<b>14.3</b>

\* FTE Students = CHP divided by 15 for undergraduates & 12 for graduates.

\*\* FTE Teaching Faculty=Headcount FT Instructional Faculty(who teach at least 3 hrs Fall) and FTE of Part-time faculty.



# CREDIT HOUR PRODUCTION BY DEPARTMENT

## FALL 2004-2007

DEPARTMENT	FALL 2004		FALL 2005		FALL 2006		FALL 2007		05 TO 06 % DIFF.	
	UG	G	UG	G	UG	G	UG	G	UG	G
<b>Arts and Sciences</b>	<b>41,466</b>	<b>1,187</b>	<b>40,339</b>	<b>1,205</b>	<b>40,051</b>	<b>1,551</b>	<b>39,364</b>	<b>1,929</b>	<b>-1.7%</b>	<b>24.4%</b>
<b>Biology</b>	<b>4,362</b>	<b>153</b>	<b>4,222</b>	<b>177</b>	<b>4,073</b>	<b>124</b>	<b>3,791</b>	<b>115</b>	<b>-6.9%</b>	<b>-7.3%</b>
BIOL	4,175	149	4,218	177	3,886	116	3,784	115	-2.6%	-0.9%
SCIE	187	4	4	0	187	8	7	0	-96.3%	-100.0%
<b>Chemistry</b>	<b>2,782</b>	<b>0</b>	<b>2,691</b>	<b>0</b>	<b>2,802</b>	<b>0</b>	<b>3,208</b>	<b>8</b>	<b>14.5%</b>	<b>100.0%</b>
CHEM	1,380	0	1,151	0	1,429	0	1,359	8	-4.9%	100.0%
ENVS	63	0	60	0	0	0	79	0	100.0%	0.0%
GEOL	727	0	802	0	597	0	962	0	61.1%	0.0%
PHSC	0	0	0	0	0	0	0	0	0.0%	0.0%
PHYS	612	0	678	0	776	0	808	0	4.1%	0.0%
<b>English</b>	<b>7,168</b>	<b>182</b>	<b>6,914</b>	<b>160</b>	<b>5,934</b>	<b>165</b>	<b>6,442</b>	<b>175</b>	<b>8.6%</b>	<b>6.1%</b>
CRTW	45	0	1,314	0	1,218	0	1,338	0	9.9%	0.0%
ENGL	2,196	129	1,608	120	1,167	123	1,116	129	-4.4%	4.9%
ENGE	71	20	43	16	47	12	43	4	-8.5%	-66.7%
SPCH	828	0	691	0	0	0	678	0	100.0%	0.0%
WRIT	4,028	33	3,258	24	3,502	30	3,267	42	-6.7%	40.0%
<b>History</b>	<b>4,235</b>	<b>132</b>	<b>3,679</b>	<b>107</b>	<b>3,444</b>	<b>152</b>	<b>2,581</b>	<b>97</b>	<b>-25.1%</b>	<b>-36.2%</b>
HIST	4,207	108	3,643	99	3,414	108	2,535	69	-25.7%	-36.1%
SCST	28	24	36	8	30	44	46	28	53.3%	-36.4%
<b>Human Nutrition</b>	<b>1,252</b>	<b>136</b>	<b>1,509</b>	<b>105</b>	<b>1,454</b>	<b>132</b>	<b>1,901</b>	<b>165</b>	<b>30.7%</b>	<b>25.0%</b>
NUTR	1,021	133	1,188	105	1,148	120	1,412	153	23.0%	27.5%
GEOG	231	3	321		306	12	489	12	59.8%	0.0%
<b>Mass Communication</b>	<b>1,379</b>	<b>0</b>	<b>1,390</b>	<b>0</b>	<b>1,429</b>	<b>0</b>	<b>1,284</b>	<b>0</b>	<b>-10.1%</b>	<b>0.0%</b>
MCOM	1,280	0	1,318	0	1,312	0	1,233	0	-6.0%	0.0%
IMCO	99	0	72	0	117	0	51	0	-56.4%	0.0%
<b>Mathematics</b>	<b>4,672</b>	<b>39</b>	<b>4,682</b>	<b>46</b>	<b>4,867</b>	<b>34</b>	<b>5,089</b>	<b>39</b>	<b>4.6%</b>	<b>14.7%</b>
MAED	84	0	76	4	86	4	59	0	-31.4%	-100.0%
MATH	2,440	39	2,233	42	2,288	30	2,705	39	18.2%	30.0%
CTQR	2,148	0	2,373	0	2,493	0	2,325	0	-6.7%	0.0%
<b>Modern &amp; Classical Lang.</b>	<b>4,317</b>	<b>25</b>	<b>3,947</b>	<b>49</b>	<b>3,834</b>	<b>37</b>	<b>3,696</b>	<b>45</b>	<b>-3.6%</b>	<b>21.6%</b>
CHIN	24	0	0	0	56	0	32	0	-42.9%	0.0%
FREN	828	0	727	3	608	3	545	0	-10.4%	-100.0%
GERM	214	0	183	0	251	0	265	0	5.6%	0.0%
ITAL	188	0	176	0	136	0	172	0	26.5%	0.0%
JAPN	84	0	80	8	72	0	0	0	-100.0%	0.0%
LATN	92	0	32	0	64	0	88	0	37.5%	0.0%
MLAN	8	4	8	8	4	4	24	0	500.0%	-100.0%
SPAN	2,879	21	2,741	30	2,643	30	2,570	45	-2.8%	50.0%
<b>Philosophy &amp; Religion</b>	<b>996</b>	<b>0</b>	<b>1,350</b>	<b>0</b>	<b>1,371</b>	<b>0</b>	<b>1,164</b>	<b>9</b>	<b>-15.1%</b>	<b>100.0%</b>
PHIL	576	0	600	0	570	0	576	9	1.1%	100.0%
RELG	420	0	750	0	801	0	588	0	-26.6%	0.0%
<b>Political Science</b>	<b>2,782</b>	<b>3</b>	<b>2,484</b>	<b>21</b>	<b>2,250</b>	<b>12</b>	<b>2,185</b>	<b>12</b>	<b>-2.9%</b>	<b>0.0%</b>
AAMS	90	0	93	0	108	0	123	0	13.9%	0.0%
PLSC	2,692	3	2,391	21	2,142	12	2,062	12	-3.7%	0.0%
<b>Psychology</b>	<b>2,884</b>	<b>463</b>	<b>2,932</b>	<b>459</b>	<b>3,151</b>	<b>463</b>	<b>3,133</b>	<b>434</b>	<b>-0.6%</b>	<b>-6.3%</b>
PSYC	2,884	463	2,932	459	3,151	463	3,133	434	-0.6%	-6.3%
<b>Sociology</b>	<b>3,744</b>	<b>6</b>	<b>3,807</b>	<b>3</b>	<b>3,959</b>	<b>21</b>	<b>3,483</b>	<b>29</b>	<b>-12.0%</b>	<b>38.1%</b>
ANTH	1,308	3	1,206		1,248		1,269	0	1.7%	0.0%
GRNT	99	0	153	0	117	0	11	0	-90.6%	0.0%
SOCL	2,256	3	2,352	3	2,489	21	2,119	29	-14.9%	38.1%
WMST	81	0	96	0	105	0	84	0	-20.0%	0.0%
<b>Social Work</b>	<b>893</b>	<b>3</b>	<b>732</b>	<b>12</b>	<b>664</b>	<b>354</b>	<b>729</b>	<b>753</b>	<b>9.8%</b>	<b>112.7%</b>
SCWK	893	3	732	12	664	354	729	753	9.8%	112.7%
<b>Speech</b>	<b>828</b>	<b>0</b>	<b>691</b>	<b>0</b>	<b>807</b>	<b>0</b>	<b>678</b>	<b>0</b>	<b>-16.0%</b>	<b>0.0%</b>
SPCH	828	0	691	0	807	0	678	0	-16.0%	0.0%
<b>Other</b>	<b>0</b>	<b>45</b>	<b>0</b>	<b>66</b>	<b>12</b>	<b>57</b>	<b>0</b>	<b>48</b>	<b>-100.0%</b>	<b>-15.8%</b>
INAS	0	0	0	0	12	0	0	0	-100.0%	0.0%
LART	0	45	0	66	0	57	0	48	0.0%	-15.8%

# CREDIT HOUR PRODUCTION BY DEPARTMENT

## FALL 2004-2007

DEPARTMENT	FALL 2004		FALL 2005		FALL 2006		FALL 2007		05 TO 06 % DIFF.	
	UG	G	UG	G	UG	G	UG	G	UG	G
<b>Business Admin.</b>	<b>11,649</b>	<b>1,782</b>	<b>11,080</b>	<b>1,575</b>	<b>12,110</b>	<b>1,380</b>	<b>11,464</b>	<b>1,440</b>	<b>-5.3%</b>	<b>4.3%</b>
<b>Acct, Finance, &amp; Econ.</b>	<b>3,828</b>	<b>498</b>	<b>3,864</b>	<b>426</b>	<b>4,059</b>	<b>465</b>	<b>3,792</b>	<b>456</b>	<b>-6.6%</b>	<b>-1.9%</b>
ACCT	1,485	195	1,434	162	1,314	159	1,506	237	14.6%	49.1%
ECON	1,575	123	1,620	87	1,923	66	1,635	63	-15.0%	-4.5%
FINC	768	180	810	177	822	240	651	156	-20.8%	-35.0%
<b>Com. Sci. &amp; Quan. Meth.</b>	<b>2,672</b>	<b>114</b>	<b>2,605</b>	<b>111</b>	<b>2,470</b>	<b>81</b>	<b>2,379</b>	<b>126</b>	<b>-3.7%</b>	<b>55.6%</b>
CSCI	1,772	30	1,735	39	1,603	30	1,578	18	-1.6%	-40.0%
QMTH	900	84	870	72	867	51	801	108	-7.6%	111.8%
<b>Management &amp; Mktg.</b>	<b>5,149</b>	<b>1,170</b>	<b>4,611</b>	<b>1,038</b>	<b>5,581</b>	<b>834</b>	<b>5,293</b>	<b>858</b>	<b>-5.2%</b>	<b>2.9%</b>
BADM	1,281	450	1,224	366	1,326	336	1,269	432	-4.3%	28.6%
HCMT	189	0	0	0	228	0	306	0	34.2%	0.0%
ENTR					138	0	123	0	-10.9%	
IMCO	99	0	99	0	117	0	51	0	-56.4%	0.0%
MGMT	2,133	600	2,310	579	2,286	423	2,103	381	-8.0%	-9.9%
MKTG	1,047	120	978	93	1,152	75	1,077	45	-6.5%	-40.0%
SPMA	400	0	0	0	334	0	364	0	9.0%	0.0%
<b>Education</b>	<b>8,646</b>	<b>3,784</b>	<b>8,998</b>	<b>2,981</b>	<b>9,342</b>	<b>3,291</b>	<b>8,655</b>	<b>3,521</b>	<b>-7.4%</b>	<b>7.0%</b>
<b>Center for Pedagogy</b>	<b>3,686</b>	<b>1,251</b>	<b>3,792</b>	<b>1,095</b>	<b>3,792</b>	<b>978</b>	<b>3,702</b>	<b>1,120</b>	<b>-2.4%</b>	<b>14.5%</b>
EDUC	3,686	735	3,792	564	3,792	564	3,702	577	-2.4%	2.3%
EDLD	0	516	0	531	0	414	0	543	0.0%	31.2%
<b>Curriculum &amp; Inst.</b>	<b>2,470</b>	<b>742</b>	<b>2,421</b>	<b>742</b>	<b>2,578</b>	<b>708</b>	<b>1,933</b>	<b>722</b>	<b>-25.0%</b>	<b>2.0%</b>
CSDV	0	444	0	342	0	312	0	303	0.0%	-2.9%
ECED	648	33	552	0	521	0	548	0	5.2%	0.0%
EDCI	177	84	180	171	300	198	227	114	-24.3%	-42.4%
ELEM	628	0	640	0	583	0	389	0	-33.3%	0.0%
FACS					351	0	170	0	-51.6%	
READ	546	63	507	75	484	54	411	153	-15.1%	183.3%
SCED	0	12	0	12	60	21	54	30	-10.0%	42.9%
SPED	217	78	263	123	267	117	134	120	-49.8%	2.6%
VCED	254	28	279	19	12	6	0	2	-100.0%	-66.7%
<b>Physical Education</b>	<b>2,484</b>	<b>129</b>	<b>2,782</b>	<b>130</b>	<b>2,924</b>	<b>138</b>	<b>3,017</b>	<b>167</b>	<b>3.2%</b>	<b>21.0%</b>
HLTH	657	12	609	18	634	24	662	15	4.4%	-37.5%
PHED	1,679	117	1,773	112	1,967	114	1,991	152	1.2%	33.3%
SPMA	148	0	400	0	323	0	364	0	12.7%	0.0%
<b>Professional Development</b>	<b>6</b>	<b>1,662</b>	<b>3</b>	<b>1,014</b>	<b>48</b>	<b>1,467</b>	<b>3</b>	<b>1,512</b>	<b>-93.8%</b>	<b>3.1%</b>
WPDC	6	1,662	3	1,014	48	1,467	3	1,512	-93.8%	3.1%
<b>Visual &amp; Perf. Arts</b>	<b>9,421</b>	<b>464</b>	<b>9,518</b>	<b>418</b>	<b>9,254</b>	<b>370</b>	<b>8,580</b>	<b>432</b>	<b>-7.3%</b>	<b>16.8%</b>
<b>Art</b>	<b>4,989</b>	<b>126</b>	<b>4,898</b>	<b>105</b>	<b>4,625</b>	<b>96</b>	<b>4,359</b>	<b>61</b>	<b>-5.8%</b>	<b>-36.5%</b>
ARTE	151	36	182	22	153	33	153	19	0.0%	-42.4%
ARTH	1,374	15	1,524	12	1,401	6	1,360	6	-2.9%	0.0%
ARTS	2,971	75	2,634	71	2,610	57	2,376	36	-9.0%	-36.8%
ARTT	493	0	558	0	461	0	470	0	2.0%	0.0%
<b>Design</b>	<b>616</b>	<b>0</b>	<b>1,113</b>	<b>0</b>	<b>1,214</b>	<b>0</b>	<b>1,466</b>	<b>0</b>	<b>20.8%</b>	<b>0.0%</b>
INDS	616	0	578	0	679	0	843	0	24.2%	0.0%
VCOM	N/A	N/A	535	0	535	0	623	0	16.4%	0.0%
<b>CVPA</b>	<b>0</b>	<b>201</b>	<b>0</b>	<b>154</b>	<b>0</b>	<b>154</b>	<b>0</b>	<b>129</b>	<b>0.0%</b>	<b>-16.2%</b>
ARTA	0	198	0	154	0	154	0	126	0.0%	-18.2%
VPAS	0	3	0	0	0	0	0	3	0.0%	100.0%
<b>Dance/Theatre</b>	<b>2,228</b>	<b>3</b>	<b>2,147</b>	<b>0</b>	<b>2,011</b>	<b>0</b>	<b>1,917</b>	<b>0</b>	<b>-4.7%</b>	<b>0.0%</b>
DANA	420	0	384	0	326	0	339	0	4.0%	0.0%
DANT	416	0	449	0	401	0	308	0	-23.2%	0.0%
DCED							46		100.0%	
THED	N/A	N/A	47	0	0	0	57	0	100.0%	0.0%
THRA	717	0	646	0	789	0	732	0	-7.2%	0.0%
THRT	675	3	621	0	495	0	435	0	-12.1%	0.0%
<b>Music</b>	<b>2,204</b>	<b>134</b>	<b>2,473</b>	<b>159</b>	<b>2,618</b>	<b>120</b>	<b>2,304</b>	<b>242</b>	<b>-12.0%</b>	<b>101.7%</b>
MUSA	701	65	895	75	919	39	902	107	-1.8%	174.4%
MUST	1,503	69	1,578	84	1,699	81	1,402	135	-17.5%	66.7%
<b>University College</b>	<b>1,464</b>	<b>0</b>	<b>1,679</b>	<b>0</b>	<b>2,060</b>	<b>0</b>	<b>2,610</b>	<b>0</b>	<b>26.7%</b>	<b>0.0%</b>
ACAD	1,077	0	1,009	0	1,023	0	1,070	0	4.6%	0.0%
GNED	378	0	654	0	1,002	0	1,512	0	50.9%	0.0%
HONR	9	0	16	0	35	0	28	0	-20.0%	0.0%

NOTE: Credit Hours are by Course Level

**CREDIT HOUR PRODUCTION BY DEPARTMENT**  
**SPRING 2004 - SPRING 2008**

UNIT/DEPARTMENT	SPRING 2004		SPRING 2005		SPRING 2006		SPRING 2007		SPRING 2008		07 TO 08 % DIFF.	
	UG	G	UG	G	UG	G	UG	G	UG	G	UG	G
<b>Arts and Sciences</b>	<b>38,892</b>	<b>1,108</b>	<b>34,756</b>	<b>1,059</b>	<b>34,705</b>	<b>1,089</b>	<b>37,912</b>	<b>1,402</b>	<b>37,041</b>	<b>1,772</b>	<b>-2.3%</b>	<b>26.4%</b>
<b>Biology</b>	<b>4,269</b>	<b>111</b>	<b>4,086</b>	<b>164</b>	<b>4,080</b>	<b>153</b>	<b>3,889</b>	<b>132</b>	<b>3,757</b>	<b>109</b>	<b>-3.4%</b>	<b>-17.4%</b>
BIOL	4,269	111	4,086	164	4,080	153	3,889	132	3,757	109	-3.4%	-17.4%
SCIE											0.0%	0.0%
<b>Chemistry</b>	<b>2,755</b>	<b>27</b>	<b>2,441</b>	<b>16</b>	<b>2,714</b>	<b>6</b>	<b>2,417</b>	<b>15</b>	<b>2,887</b>	<b>30</b>	<b>19.4%</b>	<b>100.0%</b>
CHEM	1,331	27	1,011	13	1,164	6	1,069	15	1,259	18	17.8%	20.0%
ENVS	89		87		114		99		108	12	9.1%	100.0%
GEOL	676		614	3	686		490		711		45.1%	0.0%
PHSC												0.0%
PHYS	659		729		750		759		809		6.6%	0.0%
<b>English</b>	<b>5,931</b>	<b>177</b>	<b>3,976</b>	<b>210</b>	<b>3,743</b>	<b>141</b>	<b>3,863</b>	<b>132</b>	<b>3,838</b>	<b>162</b>	<b>-0.6%</b>	<b>22.7%</b>
CRTW	27		348		1,095		1,371		1,530		11.6%	0.0%
ENGL	2,202	114	2,172	135	1,441	99	1,416	93	1,206	129	-14.8%	38.7%
ENGE	51	12	42	9	39	12	42	15	66	15	57.1%	0.0%
WRIT	3,651	51	1,414	66	1,168	30	1,034	24	1,036	18	0.2%	-25.0%
<b>History</b>	<b>3,657</b>	<b>117</b>	<b>2,977</b>	<b>99</b>	<b>2,502</b>	<b>99</b>	<b>2,706</b>	<b>150</b>	<b>2,219</b>	<b>93</b>	<b>-18.0%</b>	<b>-38.0%</b>
HIST	3,657	117	2,977	99	2,502	99	2,706	150	2,219	93	-18.0%	-38.0%
<b>Human Nutrition</b>	<b>1,139</b>	<b>129</b>	<b>1,304</b>	<b>120</b>	<b>1,478</b>	<b>185</b>	<b>1,811</b>	<b>149</b>	<b>1,905</b>	<b>141</b>	<b>5.2%</b>	<b>-5.4%</b>
NUTR	881	129	1,064	120	1,076	185	1,295	149	1,395	141	7.7%	-5.4%
GEOG	258		240		402		516		510		-1.2%	0.0%
<b>Mass Communication</b>	<b>1,609</b>	<b>3</b>	<b>1,411</b>	<b>6</b>	<b>1,328</b>	<b>0</b>	<b>1,357</b>	<b>0</b>	<b>1,380</b>	<b>0</b>	<b>1.7%</b>	<b>0.0%</b>
MCOM	1,528	3	1,372	6	1,274		1,318		1,265		-4.0%	0.0%
IMCO*	81		39		54		39		115		194.9%	0.0%
<b>Mathematics</b>	<b>3,825</b>	<b>42</b>	<b>2,498</b>	<b>33</b>	<b>3,408</b>	<b>3</b>	<b>3,572</b>	<b>9</b>	<b>3,771</b>	<b>12</b>	<b>5.6%</b>	<b>33.3%</b>
CTQR			858		1,011		1,116		1,185		6.2%	0.0%
MAED/MPDC	30	3	62	3	60	3	74	6	23	6	-68.9%	0.0%
MATH	3,795	39	2,436	30	2,337		2,382	3	2,563	6	7.6%	100.0%
<b>Modern &amp; Classical Lang.</b>	<b>3,872</b>	<b>30</b>	<b>3,898</b>	<b>18</b>	<b>3,880</b>	<b>48</b>	<b>3,570</b>	<b>30</b>	<b>3,086</b>	<b>57</b>	<b>-13.6%</b>	<b>90.0%</b>
CHIN	32		8		64		44		28		-36.4%	0.0%
FREN	710		688	3	677	6	585		471	3	-19.5%	100.0%
GERM	211		186		165		233		203		-12.9%	0.0%
ITAL	176		168		84		64		108		68.8%	0.0%
JAPN	52		40		72		60				-100.0%	0.0%
LATN	32		36		40		32				-100.0%	0.0%
MLAN		6	3								0.0%	0.0%
SPAN	2,659	24	2,769	15	2,778	42	2,552	30	2,276	54	-10.8%	80.0%
<b>Philosophy &amp; Religion</b>	<b>1,056</b>	<b>0</b>	<b>1,023</b>	<b>0</b>	<b>1,326</b>	<b>9</b>	<b>1,353</b>	<b>6</b>	<b>1,071</b>	<b>0</b>	<b>-20.8%</b>	<b>-100.0%</b>
PHIL	687		669	3	627	6	729		519		-28.8%	0.0%
RELG	369		354		699	3	624	6	552	0	-11.5%	-100.0%
<b>Political Science</b>	<b>2,452</b>	<b>15</b>	<b>2,601</b>	<b>15</b>	<b>2,138</b>	<b>9</b>	<b>1,962</b>	<b>18</b>	<b>1,798</b>	<b>7</b>	<b>-8.4%</b>	<b>-61.1%</b>
AAMS	3		90		117		105		90		-14.3%	0.0%
PLSC	2,452	15	2,601	15	2,138	9	1,962	18	1,798	7	-8.4%	-61.1%
<b>Psychology</b>	<b>2,979</b>	<b>373</b>	<b>3,007</b>	<b>339</b>	<b>2,729</b>	<b>358</b>	<b>2,819</b>	<b>326</b>	<b>3,080</b>	<b>456</b>	<b>9.3%</b>	<b>39.9%</b>
PSYC	2,979	373	3,007	339	2,729	358	2,819	326	3,080	456	9.3%	39.9%
<b>Sociology</b>	<b>3,479</b>	<b>12</b>	<b>3,727</b>	<b>0</b>	<b>3,716</b>	<b>6</b>	<b>3,903</b>	<b>6</b>	<b>3,347</b>	<b>15</b>	<b>-14.2%</b>	<b>150.0%</b>
ANTH	1,216	3	1,298		1,358		1,339		1,314		-1.9%	0.0%
GRNT	18		36		156		159		84	3	-47.2%	100.0%
SOCL	2,245	9	2,393		2,172	3	2,402	6	1,919	12	-20.1%	100.0%
WMST					30	3	3		30		900.0%	0.0%
<b>Social Work</b>	<b>1,131</b>	<b>12</b>	<b>1,015</b>	<b>6</b>	<b>884</b>	<b>6</b>	<b>805</b>	<b>384</b>	<b>740</b>	<b>687</b>	<b>-8.1%</b>	<b>78.9%</b>
CMVS	45		54		45		45		60		33.3%	0.0%
SCWK	1,086	12	961	6	839	6	760	384	680	687	-10.5%	78.9%
<b>Speech</b>	<b>726</b>	<b>0</b>	<b>771</b>	<b>0</b>	<b>758</b>	<b>0</b>	<b>765</b>	<b>0</b>	<b>932</b>	<b>0</b>	<b>21.8%</b>	<b>0.0%</b>
SPCH	726		771		758		765		932		21.8%	0.0%
<b>Other</b>	<b>12</b>	<b>60</b>	<b>21</b>	<b>33</b>	<b>21</b>	<b>66</b>	<b>24</b>	<b>45</b>	<b>102</b>	<b>3</b>	<b>325.0%</b>	<b>-93.3%</b>
INAS	12		21		21		24		102		325.0%	0.0%
LART		60		33		66		45		3	0.0%	-93.3%
<b>University College</b>	<b>543</b>	<b>0</b>	<b>2,538</b>	<b>0</b>	<b>2,579</b>	<b>0</b>	<b>3,096</b>	<b>0</b>	<b>3,128</b>	<b>0</b>	<b>1.0%</b>	<b>0.0%</b>
ACAD	33		65		22		25		114		356.0%	0.0%
GNED/HMXP	543		2538		2508		3030		2931		-3.3%	0.0%
HONR	37		62		49		41		83		102.4%	0.0%
LEAD									49			0.0%

\*Interdisciplinary Courses

NOTE: Credit Hours are by course level.

## CREDIT HOUR PRODUCTION BY DEPARTMENT SPRING 2004 - SPRING 2008

UNIT/DEPARTMENT	SPRING 2004		SPRING 2005		SPRING 2006		SPRING 2007		SPRING 2008		07 TO 08 % DIFF.	
	UG	G	UG	G	UG	G	UG	G	UG	G	UG	G
<b>Business Administration</b>	<b>10,915</b>	<b>1,659</b>	<b>11,005</b>	<b>1,719</b>	<b>11,465</b>	<b>1,404</b>	<b>11,650</b>	<b>1,371</b>	<b>11,566</b>	<b>1,551</b>	<b>-0.7%</b>	<b>13.1%</b>
<b>Account, Finance, &amp; Econ.</b>	<b>3,936</b>	<b>588</b>	<b>3,771</b>	<b>522</b>	<b>3,888</b>	<b>435</b>	<b>3,948</b>	<b>360</b>	<b>3,804</b>	<b>453</b>	<b>-3.6%</b>	<b>25.8%</b>
ACCT	1,488	321	1,461	264	1,422	252	1,380	213	1,296	303	-6.1%	42.3%
ECON	1,803	120	1,611	84	1,707	51	1,848	42	1,683	33	-8.9%	-21.4%
FINC	645	147	699	174	759	132	720	105	825	117	14.6%	11.4%
<b>Com. Sci. &amp; Quan. Meth.</b>	<b>2,729</b>	<b>144</b>	<b>2,383</b>	<b>108</b>	<b>2,360</b>	<b>63</b>	<b>2,477</b>	<b>117</b>	<b>2,694</b>	<b>102</b>	<b>8.8%</b>	<b>-12.8%</b>
CSCI	1,748	30	1,492	24	1,475	18	1,553	15	1,755	9	13.0%	-40.0%
INFD									114		100.0%	0.0%
QMTH	981	114	891	84	885	45	924	102	825	93	-10.7%	-8.8%
<b>Management &amp; Marketing</b>	<b>4,250</b>	<b>927</b>	<b>4,851</b>	<b>1,089</b>	<b>5,217</b>	<b>906</b>	<b>5,225</b>	<b>894</b>	<b>5,068</b>	<b>996</b>	<b>-3.0%</b>	<b>11.4%</b>
BADM	712	285	1,115	456	957	306	1,020	375	1,017	438	-0.3%	16.8%
ENTR					162		177		165		-6.8%	0.0%
HCMT					168		219		246		12.3%	0.0%
HLAD/HLSM	237		141								0.0%	0.0%
IMCO*	81		39		54		39		115		194.9%	0.0%
MGMT	2,025	504	2,277	480	2,478	474	2,409	429	2,187	459	-9.2%	7.0%
MKTG	1,137	138	1,074	153	1,179	126	1,131	90	1,002	99	-11.4%	10.0%
SPMA*	58		205		219		230		336		46.1%	0.0%
<b>Education</b>	<b>8,964</b>	<b>2,088</b>	<b>9,016</b>	<b>2,025</b>	<b>8,954</b>	<b>1,848</b>	<b>8,640</b>	<b>1,758</b>	<b>8,602</b>	<b>2,073</b>	<b>-0.4%</b>	<b>17.9%</b>
<b>Center for Pedagogy</b>	<b>3,927</b>	<b>1,341</b>	<b>3,756</b>	<b>897</b>	<b>3,623</b>	<b>990</b>	<b>3,532</b>	<b>876</b>	<b>3,425</b>	<b>1,080</b>	<b>-3.0%</b>	<b>23.3%</b>
EDUC	3,927	759	3,756	501	3,623	567	3,532	432	3,425	534	-3.0%	23.6%
EDLD		582		396		423		444		546	0.0%	23.0%
<b>Curriculum &amp; Instruction</b>	<b>2,274</b>	<b>336</b>	<b>2,290</b>	<b>552</b>	<b>2,414</b>	<b>381</b>	<b>2,400</b>	<b>465</b>	<b>2,050</b>	<b>402</b>	<b>-14.6%</b>	<b>-13.5%</b>
CSDV		426		396		348		339		327	0.0%	-3.5%
EDCI	276	72	267	141	333	120	306	114	357	57	16.7%	-50.0%
ECED	285		285	30	291		360	21	244		-32.2%	-100.0%
ELEM	396		394		324		364	24	306		-15.9%	-100.0%
FACS					564	3	521	3	345		-33.8%	-100.0%
READ	665	183	696	249	665	156	663	111	603	222	-9.0%	100.0%
SPED	243	81	225	126	237	99	186	192	195	123	4.8%	-35.9%
VCED	409		423	6		3					0.0%	0.0%
<b>Physical Education</b>	<b>2,763</b>	<b>93</b>	<b>2,970</b>	<b>90</b>	<b>2,917</b>	<b>123</b>	<b>2,708</b>	<b>258</b>	<b>3,127</b>	<b>162</b>	<b>15.5%</b>	<b>-37.2%</b>
HLTH/WELL	537	21	576	21	674	27	580	111	481	48	-17.1%	-56.8%
PHED	2,168	72	2,189	69	2,024	96	1,898	147	2,310	114	21.7%	-22.4%
SPMA*	58		205		219		230		336		46.1%	0.0%
<b>Other</b>		<b>318</b>		<b>486</b>		<b>354</b>		<b>159</b>		<b>429</b>	<b>0.0%</b>	<b>169.8%</b>
WSDT/WPDC		318		486		354		159		429	0.0%	169.8%
<b>Visual &amp; Performing Arts</b>	<b>10,449</b>	<b>491</b>	<b>10,722</b>	<b>444</b>	<b>10,648</b>	<b>379</b>	<b>11,296</b>	<b>405</b>	<b>12,224</b>	<b>493</b>	<b>8.2%</b>	<b>21.7%</b>
<b>Art*</b>	<b>6,055</b>	<b>315</b>	<b>6,375</b>	<b>274</b>	<b>6,488</b>	<b>198</b>	<b>6,927</b>	<b>241</b>	<b>6,459</b>	<b>234</b>	<b>-6.8%</b>	<b>-2.9%</b>
ARTA		187		151		123		154		112	0.0%	-27.3%
ARTE	195	24	225	33	156	6	165	36	147	27	-10.9%	-25.0%
ARTH	1,482	42	1,158	15	1,182	6	1,347	9	1,284	39	-4.7%	333.3%
ARTS	2,804	62	2,295	75	2,177	63	2,103	42	2,013	56	-4.3%	33.3%
ARTT	368		345		339		288		249		-13.5%	0.0%
<b>Design*</b>	<b>603</b>	<b>0</b>	<b>1,176</b>	<b>0</b>	<b>1,317</b>	<b>0</b>	<b>1,512</b>	<b>0</b>	<b>1,383</b>	<b>0</b>	<b>-8.5%</b>	<b>0.0%</b>
VCOM			516		510		516		492		-4.7%	0.0%
INDS	603		660		807		996		891		-10.5%	0.0%
<b>Dance/Theatre</b>	<b>2,111</b>		<b>2,076</b>	<b>3</b>	<b>1,884</b>		<b>2,007</b>		<b>2,200</b>		<b>9.6%</b>	<b>0.0%</b>
DANA	314		284		244		287		292		1.7%	0.0%
DANT	452		378		400		442		453		2.5%	0.0%
DECD							74		76		2.7%	0.0%
THED			48		55		45		49		8.9%	0.0%
THRA	711		727		700		664		752		13.3%	0.0%
THRT	634		639	3	485		495		578		16.8%	0.0%
<b>Music</b>	<b>2,283</b>	<b>176</b>	<b>2,271</b>	<b>167</b>	<b>2,276</b>	<b>178</b>	<b>2,362</b>	<b>164</b>	<b>2,182</b>	<b>259</b>	<b>-7.6%</b>	<b>57.9%</b>
MUSA	893	70	847	73	868	66	916	61	835	89	-8.8%	45.9%
MUST	1,390	106	1,424	94	1,408	112	1,446	103	1,347	170	-6.8%	65.0%
<b>Other</b>	<b>0</b>	<b>0</b>	<b>0</b>	<b>0</b>	<b>0</b>	<b>3</b>	<b>0</b>	<b>0</b>	<b>0</b>	<b>0</b>	<b>0.0%</b>	<b>0.0%</b>
VPAS						3					0.0%	0.0%

NOTE: Credit Hours are by course level.

**CREDIT HOUR PRODUCTION BY DEPARTMENT BY COURSE LEVEL  
SUMMER 2004 - SUMMER 2007**

DEPARTMENT	SUM 2004		SUM 2005		SUM 2006		SUM 2007		06 TO 07 % DIFF.	
	UG	G	UG	G	UG	G	UG	G	UG	G
<b>Unit/Department</b>	<b>UG</b>	<b>G</b>	<b>UG</b>	<b>G</b>	<b>UG</b>	<b>G</b>	<b>UG</b>	<b>G</b>	<b>UG</b>	<b>G</b>
<b>Arts and Sciences</b>	<b>4,930</b>	<b>874</b>	<b>3,677</b>	<b>741</b>	<b>3,703</b>	<b>777</b>	<b>4,008</b>	<b>755</b>	<b>8.2%</b>	<b>-2.8%</b>
<b>Biology</b>	<b>511</b>	<b>14</b>	<b>534</b>	<b>0</b>	<b>450</b>	<b>16</b>	<b>422</b>	<b>19</b>	<b>-6.2%</b>	<b>18.8%</b>
BIOL	403	14	388		348	16	341	19	-2.0%	18.8%
SCIE	108		146		102		81		-20.6%	0.0%
<b>Chemistry</b>	<b>720</b>	<b>0</b>	<b>416</b>	<b>0</b>	<b>428</b>	<b>45</b>	<b>431</b>	<b>27</b>	<b>0.7%</b>	<b>-40.0%</b>
CHEM	446		284		328		332		1.2%	0.0%
ENVS							3		100.0%	0.0%
GEOL	52		45		45				-100.0%	0.0%
PHYS	222		87		55	45	96	27	74.5%	-40.0%
<b>English</b>	<b>600</b>	<b>171</b>	<b>405</b>	<b>156</b>	<b>436</b>	<b>153</b>	<b>513</b>	<b>138</b>	<b>17.7%</b>	<b>-9.8%</b>
CRTW					51		180		252.9%	0.0%
ENGL	276	24	204	36	225	48	153	21	-32.0%	-56.3%
WRIT	324	147	201	120	160	105	180	117	12.5%	11.4%
<b>History</b>	<b>285</b>	<b>51</b>	<b>291</b>	<b>39</b>	<b>306</b>	<b>39</b>	<b>222</b>	<b>42</b>	<b>-27.5%</b>	<b>7.7%</b>
HIST	285	51	291	39	306	39	222	42	-27.5%	7.7%
<b>Human Nutrition</b>	<b>225</b>	<b>62</b>	<b>309</b>	<b>57</b>	<b>289</b>	<b>68</b>	<b>265</b>	<b>46</b>	<b>-8.3%</b>	<b>-32.4%</b>
NUTR	171	62	243	57	238	68	265	46	11.3%	-32.4%
GEOG	54		66		51				-100.0%	0.0%
<b>Mass Communication</b>	<b>97</b>	<b>51</b>	<b>74</b>	<b>39</b>	<b>49</b>	<b>48</b>	<b>92</b>	<b>0</b>	<b>87.8%</b>	<b>-100.0%</b>
MCOM	97	51	74	39	49	48	92		87.8%	-100.0%
<b>Mathematics</b>	<b>651</b>	<b>75</b>	<b>423</b>	<b>21</b>	<b>453</b>	<b>18</b>	<b>513</b>	<b>42</b>	<b>13.2%</b>	<b>133.3%</b>
CTQR					132		171		29.5%	0.0%
MAED/MPDC		57				18		24	0.0%	33.3%
MATH	651	18	423	21	321		342	18	6.5%	100.0%
<b>Modern &amp; Classical Lang.</b>	<b>518</b>	<b>30</b>	<b>331</b>	<b>12</b>	<b>419</b>	<b>42</b>	<b>337</b>	<b>75</b>	<b>-19.6%</b>	<b>78.6%</b>
FREN	32		48		48		64		33.3%	0.0%
MLAN	120	6	54	12	102	12	34		-66.7%	-100.0%
SPAN	366	24	229		269	30	239	75	-11.2%	150.0%
<b>Philosophy &amp; Religion</b>	<b>138</b>	<b>0</b>	<b>141</b>	<b>0</b>	<b>78</b>	<b>0</b>	<b>60</b>	<b>0</b>	<b>-23.1%</b>	<b>0.0%</b>
PHIL	108		42		33		60		81.8%	0.0%
RELG	30		99		45				-100.0%	0.0%
<b>Political Science</b>	<b>210</b>	<b>3</b>	<b>141</b>	<b>0</b>	<b>108</b>	<b>6</b>	<b>168</b>	<b>0</b>	<b>55.6%</b>	<b>-100.0%</b>
PLSC	210	3	141		108	6	168		55.6%	-100.0%
<b>Psychology</b>	<b>198</b>	<b>411</b>	<b>214</b>	<b>408</b>	<b>207</b>	<b>333</b>	<b>346</b>	<b>249</b>	<b>67.1%</b>	<b>-25.2%</b>
PSYC	198	411	214	408	207	333	346	249	67.1%	-25.2%
<b>Sociology</b>	<b>370</b>	<b>3</b>	<b>117</b>	<b>3</b>	<b>300</b>	<b>3</b>	<b>429</b>	<b>0</b>	<b>43.0%</b>	<b>-100.0%</b>
ANTH			90		57		87		52.6%	0.0%
GRNT	36		27		21		30		42.9%	0.0%
SOCL	334	3		3	222	3	312		40.5%	-100.0%
<b>Social Work</b>	<b>206</b>	<b>3</b>	<b>142</b>	<b>6</b>	<b>24</b>	<b>6</b>	<b>21</b>	<b>117</b>	<b>-12.5%</b>	<b>1850.0%</b>
CMVS					15				-100.0%	0.0%
SCWK	206	3	142	6	9	6	21	117	133.3%	1850.0%
<b>Speech</b>	<b>192</b>	<b>0</b>	<b>139</b>	<b>0</b>	<b>156</b>	<b>0</b>	<b>189</b>	<b>0</b>	<b>21.2%</b>	<b>0.0%</b>
SPCH	192		139		156		189		21.2%	0.0%
<b>Other</b>	<b>9</b>	<b>0</b>	<b>0</b>	<b>0</b>	<b>0</b>	<b>0</b>	<b>0</b>	<b>0</b>	<b>0.0%</b>	<b>0.0%</b>
AAMS	9								0.0%	0.0%
	<b>UG</b>	<b>G</b>	<b>UG</b>	<b>G</b>	<b>UG</b>	<b>G</b>	<b>UG</b>	<b>G</b>	<b>UG</b>	<b>G</b>
<b>University College</b>	<b>12</b>	<b>0</b>	<b>0</b>	<b>0</b>	<b>66</b>	<b>0</b>	<b>132</b>	<b>0</b>	<b>100.0%</b>	<b>0.0%</b>
GNED/HMXP	12				66		132		100.0%	0.0%

**CREDIT HOUR PRODUCTION BY DEPARTMENT BY COURSE LEVEL  
SUMMER 2004 - SUMMER 2007**

DEPARTMENT	SUM 2004		SUM 2005		SUM 2006		SUM 2007		06 TO 07 % DIFF.	
	UG	G	UG	G	UG	G	UG	G	UG	G
<b>Business Administration</b>	1,120	897	1,005	723	983	570	1,002	672	1.9%	17.9%
<b>Account, Finance, &amp; Econ.</b>	348	336	423	234	288	228	309	267	7.3%	17.1%
ACCT	129	123	168	132	90	102	111	132	23.3%	29.4%
ECON	129	126	132	60	75	69	111	90	48.0%	30.4%
FINC	90	87	123	42	123	57	87	45	-29.3%	-21.1%
<b>Com. Sci. &amp; Quan.Meth.</b>	156	87	129	99	106	51	159	48	50.0%	-5.9%
CSCI	54	9	27		19	12	48		152.6%	-100.0%
QMTH	102	78	102	99	87	39	111	48	27.6%	23.1%
<b>Management &amp; Marketing</b>	616	474	453	390	589	291	534	357	-9.3%	22.7%
BADM	63	111	57	147	103	111	72	162	-30.1%	45.9%
ENTR					6		3		-50.0%	0.0%
HCMT					27		33		22.2%	0.0%
HLAD/HLSM	42		42						0.0%	0.0%
MGMT	312	363	264	243	240	180	237	195	-1.3%	8.3%
MKTG	123		90		135		135		0.0%	0.0%
SPMA	76				78		54		-30.8%	0.0%
	UG	G	UG	G	UG	G	UG	G	UG	G
<b>College of Education</b>	505	2,142	482	1,815	758	1,914	566	1,626	-25.3%	-15.0%
<b>Center for Pedagogy</b>	94	594	78	633	60	666	97	684	61.7%	2.7%
EDLD		213		237		108		210	0.0%	94.4%
EDUC	94	381	78	396	60	558	97	474	61.7%	-15.1%
<b>Curriculum &amp; Instruction</b>	309	918	262	792	389	690	274	678	-29.6%	-1.7%
CSDV		360		321		366		381	0.0%	4.1%
ECED	54	60	21		78	54	51	24	-34.6%	-55.6%
ELEM	48	42		51	33			30	-100.0%	100.0%
FACS					18		16		-11.1%	0.0%
READ	186	303	194	261	256	198	207	159	-19.1%	-19.7%
SCED									0.0%	0.0%
SPED		153		153		69		84	0.0%	21.7%
VCED	21		47	6	4	3			-100.0%	-100.0%
<b>Physical Education</b>	102	6	142	15	309	3	195	27	-36.9%	800.0%
HLTH	69	3	81	6	150	3	81	18	-46.0%	500.0%
PHED	33	3	61	9	81		60	9	-25.9%	100.0%
SPMA					78		54		-30.8%	0.0%
<b>WPDC</b>	0	624	0	375	0	555	0	237	0.0%	-57.3%
WPDC		624		375		555		237	0.0%	-57.3%
	UG	G	UG	G	UG	G	UG	G	UG	G
<b>Visual &amp; Performing Arts</b>	539	283	(415)	227	460	496	538	295	17.0%	-40.5%
<b>Art &amp; Design</b>	354	(323)	(606)	(401)	340	152	343	145	0.9%	-4.6%
ARTA		61				68		88	0.0%	29.4%
ARTE	57		15		33	36	39	18	18.2%	-50.0%
ARTH	87		15		96	39	84	30	-12.5%	-23.1%
ARTS	171	(192)	(318)	(201)	177	9	163	9	-7.9%	0.0%
ARTT	39	(132)	(217)	(136)			15		100.0%	0.0%
INDS		(60)	(101)	(65)	34		42		23.5%	0.0%
<b>Dance/Theatre</b>	32	255	45	273	33	0	60	0	81.8%	0.0%
DANA		255		273					0.0%	0.0%
DANT	4		15		15		3		-80.0%	0.0%
DECD							3			0.0%
THRA	25		15		3				-100.0%	0.0%
THRT	3		15		15		54		260.0%	0.0%
<b>Music</b>	153	96	146	82	87	80	135	48	55.2%	-40.0%
MUSA	12	12	15	6	3	11	5	3	66.7%	-72.7%

**CREDIT HOUR PRODUCTION BY DEPARTMENT BY COURSE LEVEL  
SUMMER 2004 - SUMMER 2007**

DEPARTMENT	SUM 2004		SUM 2005		SUM 2006		SUM 2007		06 TO 07 % DIFF.	
	MUST	141	84	131	76	84	69	130	45	54.8%
<b>Other</b>	<b>0</b>	<b>255</b>	<b>0</b>	<b>273</b>	<b>0</b>	<b>264</b>	<b>0</b>	<b>102</b>	<b>0.0%</b>	<b>-61.4%</b>
VPAS		255		273		264		102	0.0%	-61.4%

**Average Number of Student Credit Hours Taught by Full-Time Teaching Faculty\***  
(Performance Funding Indicator 3B)

COLLEGE/DEPARTMENT	FALL 2003		FALL 2004		FALL 2005		FALL 2006		FALL 2007		5-YEAR AVERAGE	
	headcount	avg. hrs.	headcount	avg. hrs.	headcount	avg. hrs.	headcount	avg. hrs.	headcount	avg. hrs.	headcount	avg. hrs.
<b>ARTS &amp; SCIENCES</b>	<b>135</b>	<b>235</b>	<b>132</b>	<b>220</b>	<b>132</b>	<b>204</b>	<b>132</b>	<b>214</b>	<b>131</b>	<b>197</b>	<b>132</b>	<b>214</b>
Biology	14	172	14	155	14	136	14	153	14	140	14	151
Chemistry and Physics	14	181	15	162	15	145	12	152	15	133	14	155
English	24	191	21	199	21	192	20	189	19	175	21	189
History	10	381	9	379	10	326	10	306	7	274	9	333
Human Nutrition	5	212	6	165	6	167	6	155	6	213	6	182
Mass Communication	13	309	7	179	7	176	7	181	7	162	8	201
Mathematics	6	215	13	293	12	281	13	328	13	303	11	284
Modern and Classical Lang.	8	206	5	174	5	136	6	164	7	134	6	163
Philosophy & Religious Studies	3	290	3	305	5	274	5	300	5	265	4	287
Political Science	9	289	10	232	8	215	8	254	8	244	9	247
Psychology	13	208	13	208	13	202	13	212	13	195	13	205
Social Work	6	188	6	149	6	134	8	96	7	152	7	144
Sociology	7	347	7	330	7	302	8	306	8	249	7	307
Speech	3	237	3	276	3	197	2	236	2	248	3	239
<b>BUSINESS ADMINISTRATION</b>	<b>40</b>	<b>273</b>	<b>36</b>	<b>306</b>	<b>43</b>	<b>261</b>	<b>41</b>	<b>259</b>	<b>35</b>	<b>256</b>	<b>39</b>	<b>271</b>
Accounting, Finance & Econ.	17	247	15	244	17	260	17	262	13	279	16	258
Computer Science & Quan. Meth.	10	302	9	360	10	277	9	270	9	271	9	296
Management & Marketing	13	284	12	342	16	251	15	248	13	222	14	269
<b>EDUCATION</b>	<b>44</b>	<b>179</b>	<b>42</b>	<b>194</b>	<b>48</b>	<b>178</b>	<b>46</b>	<b>174</b>	<b>40</b>	<b>164</b>	<b>44</b>	<b>178</b>
Center for Pedagogy	13	210	13	245	16	185	16	200	15	194	15	165
Counseling and Leadership	6	122	-	-	-	-	-	-	-	-	-	-
Curriculum and Instruction	16	164	19	154	21	161	19	162	17	129	18	154
Health and Physical Education	9	199	10	201	11	199	11	155	8	180	10	187
<b>VISUAL &amp; PERFORMING ARTS</b>	<b>45</b>	<b>137</b>	<b>45</b>	<b>130</b>	<b>41</b>	<b>133</b>	<b>46</b>	<b>125</b>	<b>44</b>	<b>114</b>	<b>44</b>	<b>128</b>
Art and Design	22	153	20	139	21	158	21	149	19	143	21	148
Music	14	83	17	82	13	91	16	93	16	92	15	88
Theatre And Dance	9	183	8	208	7	133	9	123	9	90	8	147
<b>TOTAL</b>	<b>264</b>	<b>215</b>	<b>255</b>	<b>212</b>	<b>264</b>	<b>197</b>	<b>265</b>	<b>198</b>	<b>250</b>	<b>185</b>	<b>260</b>	<b>202</b>

\*NOTE: For this performance indicator full-time teaching faculty is defined as full-time, unclassified faculty at the rank of instructor, assistant professor, associate professor, professor at institutions, who teach at least three credit hours, measured in the fall semester. Unclassified employees who hold positions above department chair, such as deans, vice presidents, and presidents are excluded.



**AVERAGE CLASS SIZE OF LECTURE/LAB  
BY DISCIPLINE AND LEVEL**

Program Code	Discipline	2003		2004		2005		2006		2007	
		Lower Div.	Upper Div.	Lower Div.	Upper Div.	Lower Div.	Upper Div.	Lower Div.	Upper Div.	Lower Div.	Upper Div.
0300	Natural Resources and Conservation	21	9.5	18.00	1.00	19.00	0	0	0	24.00	2.00
0500	Area, Ethnic, Cultural and Gender Studies	0.00	0.00	0.00	15.00	0.00	15.50	0.00	9	0.00	13.67
0900	Communications	24.88	17.23	17.60	16.05	17.89	17.33	20.00	15.82	26.25	15.43
1100	Computer and Information Sciences	25.00	20.50	23.30	15.70	26.06	12.86	25.05	7.00	23.69	7.55
1300	Education	23.00	16.81	22.62	19.17	21.63	18.38	21.12	18.70	20.47	16.70
1600	Foreign Languages and Literatures	18.64	8.63	18.54	9.88	17.02	7.45	17.00	6.64	17.50	6.13
1900	Home Economics	22.83	14.60	26.13	14.64	27.56	15.27	21.33	11.71	21.36	21.60
2300	English Language and Literatures	19.99	15.39	19.81	13.66	18.97	11.63	20.22	11.52	19.48	12.33
2400	Liberal Arts	0.00	0.00	16.77	0.00	19.65	0.00	16.93	0.00	20.16	0.00
2600	Biological Sciences/Life Sciences	34.70	21.38	27.75	18.39	26.47	20.65	22.88	20.25	23.76	21.26
2700	Mathematics	37.81	12.40	32.80	9.73	35.26	9.64	37.86	10.55	35.06	10.50
3000	Multi/Interdisciplinary Studies	18.00	12.40	5.33	12.00	17.00	16.00	13.00	9.50	11.00	6.40
3100	Sport Management	35.00	4.50	29.00	9.33	31.00	12.33	18.25	6.00	25.75	8.50
3800	Philosophy and Religion	33.40	28.40	34.50	27.71	34.33	27.11	31.11	29.50	29.67	17.75
4000	Physical Sciences	24.10	14.43	22.33	16.25	21.67	17.00	22.35	16.80	20.22	13.48
4200	Psychology	42.75	22.32	44.42	19.04	42.42	21.96	38.56	23.65	40.33	21.10
4400	Public Administration and Services	28.33	14.33	23.50	12.11	22.25	10.33	18.67	10.86	16.25	15.00
4500	Social Sciences	51.21	19.44	42.80	18.91	37.83	19.06	45.87	15.43	47.55	15.21
5000	Visual and Performing Arts	23.97	11.00	23.27	11.93	21.95	11.69	20.21	11.19	18.98	10.66
5100	Communication Disorders, General	*	*	*	*	*	*	21.75	19.00	22.14	14.20
5200	Business Management and Admin.	42.09	26.65	37.38	27.27	36.87	28.38	38.26	28.50	38.51	26.60
5400	History	43.64	21.46	40.70	19.47	38.39	20.11	35.12	18.33	32.18	13.69
	<b>University Total Average</b>	27.47	15.09	25.43	15.33	25.71	15.64	24.07	14.55	24.30	13.70

\* New program

\*\* In fall 2003, History CIP changed from 4508 to 5401

**DEGREES CONFERRED  
BY LEVEL & SEMESTER  
1997 - 2007**

<b>LEVEL/SEMESTER</b>	<b>97-98</b>	<b>98-99</b>	<b>99-00</b>	<b>00-01</b>	<b>01-02</b>	<b>02-03</b>	<b>03-04</b>	<b>04-05</b>	<b>05-06</b>	<b>06-07</b>	<b>07-08</b>
<b>Undergraduate</b>	<b>713</b>	<b>688</b>	<b>765</b>	<b>724</b>	<b>770</b>	<b>835</b>	<b>870</b>	<b>900</b>	<b>1,006</b>	<b>1,028</b>	<b>287</b>
Fall	227	202	261	217	250	279	290	305	327	300	287
Spring	408	391	413	428	425	472	507	508	605	640	
Summer	78	95	91	79	95	84	73	87	74	88	
<b>Graduate</b>	<b>264</b>	<b>269</b>	<b>260</b>	<b>219</b>	<b>279</b>	<b>230</b>	<b>287</b>	<b>264</b>	<b>270</b>	<b>1,266</b>	<b>66</b>
Fall	65	67	75	77	90	58	94	72	83	369	66
Spring	132	124	104	92	110	101	119	133	155	767	
Summer	67	78	81	50	79	71	74	59	32	130	
<b>Certificate</b>									<b>2</b>	<b>6</b>	<b>2</b>
Fall									2	1	2
Spring										4	
Summer										1	
<b>Total UG, G,&amp; C</b>	<b>977</b>	<b>957</b>	<b>1,025</b>	<b>943</b>	<b>1,049</b>	<b>1,065</b>	<b>1,157</b>	<b>1,164</b>	<b>1,278</b>	<b>2,300</b>	<b>355</b>
Fall	292	269	336	294	340	337	384	377	412	670	355
Spring	540	515	517	520	535	573	626	641	760	1,411	0
Summer	145	173	172	129	174	155	147	146	106	219	0



**GRADUATE DEGREES CONFERRED  
BY DEGREE PROGRAM & SEMESTER  
2003 - 2007**

DEGREE PROGRAM	2003	2004	2004	2004	2005	2005	2005	2006	2006	2006	2007	2007
	FALL	SPR	SUM	FALL	SPR	SUM	FALL	SPR	SUM	FALL	SPR	SUM
<b>ARTS &amp; SCIENCES</b>	<b>12</b>	<b>33</b>	<b>2</b>	<b>5</b>	<b>32</b>	<b>1</b>	<b>16</b>	<b>31</b>	<b>2</b>	<b>12</b>	<b>30</b>	<b>7</b>
M.S. Biology	3	2	0	0	6	1	5	2	1	3	5	0
M.A. English	0	4	0	1	3	0	1	3	0	1	3	1
Certificate Gerontology							0	0	0		3	0
M.S. Human Nutrition	5	1	0	3	3	0	4	3	1	2	1	1
M.A. History	0	2	1	1	2	0	0	1	0	1	2	1
M.L.A. Liberal Arts	0	5	0	0	1	0	3	4	0	3	0	0
MMTH Mathematics	1	3	1	0	0	0	2	0	0	0	0	0
M.S. School Psychology	0	6	0	0	8	0	0	8	0	1	8	0
S.S.P. School Psychology	0	9	0	0	8	0	0	9	0	0	7	1
M.A. Spanish	3	1	0	0	1	0	1	1	0	1	1	3
<b>BUSINESS ADMINISTRATION</b>	<b>42</b>	<b>34</b>	<b>29</b>	<b>36</b>	<b>47</b>	<b>22</b>	<b>29</b>	<b>46</b>	<b>12</b>	<b>36</b>	<b>34</b>	<b>20</b>
Certificate Business Administration							0					
M.B.A. Business Administration	39	23	29	30	30	22	26	36	12	34	20	19
Executive MBA	1	8	0	0	15	0	1	8	0	1	12	0
P.B. Cert. Software Project Management	2	3	0	3	1	0	0	1	0	0	1	0
M.S. Software Engineering				3	1	0	2	1	0	1	1	1
<b>EDUCATION</b>	<b>34</b>	<b>47</b>	<b>41</b>	<b>30</b>	<b>58</b>	<b>28</b>	<b>33</b>	<b>67</b>	<b>16</b>	<b>23</b>	<b>72</b>	<b>11</b>
M.A.T. Business Education	0	0	0	1	3	0	0	0	0	0	0	0
M. Ed. Counseling & Development	0	14	3	1	25	2	0	17	0	0	21	0
M.Ed. Curriculum and Instruction	4	0	1	4	0	0	12	3	0	9	4	2
M.Ed. Educational Leadership	10	9	8	16	13	4	1	25	7	3	10	3
M. Ed. Elementary Education	0	2	1									
M. Ed. Middle Level Education	11	0	0	0	0	0	12	1	0	1	12	0
M.A.T. Art Education (K-12)	0	2	0	0	0	0	0	0	0	0	0	0
M.A.T. Music Education (K-12)	0	0	0	0	2	0	0	0	0	0	0	0
M.A.T. Physical Education (K-12)	1	0	0	0	1	0	0	0	0	0	0	0
M.S. Physical Education	0	0	0	2	1	2	0	0	1	0	8	2
M. Ed. Reading	4	3	24	2	3	18	0	5	8	2	2	3
M. Ed. Secondary Education	0	0	1									
M.A.T. Secondary Education	3	14	2	1								
M. Ed. Special Education	1	3	1	2	0	1	6	3	0	3	2	0
M.A.T. Teacher Education- Art				0	2	0	0	3	0	0	1	0
M.A.T. Teacher Education- Biology				0	1	0				0	0	0
M.A.T. Teacher Education- Business				0	0	0				0	0	0
M.A.T. Teacher Education- PE							0	1	0	1	3	0
M.A.T. Secondary Education-Biology										0	1	
M.A.T. Secondary Education-Business							1	2	0	2	0	1
M.A.T. Secondary Education-English				1	2	1	1	2	0	2	1	0
M.A.T. Secondary Education-Fam&Cons S							0	1	0	0	0	0
M.A.T. Secondary Education-French				0	0	0	0	2	0	0	0	0
M.A.T. Secondary Education-Math										0	1	0
M.A.T. Secondary Education-Soc Stud				0	4	0	0	2	0	0	6	0
M.A.T. Secondary Education-SPAN				0	1	0	0	0	0	0	0	0
<b>VISUAL &amp; PERFORMING ARTS</b>	<b>3</b>	<b>3</b>	<b>2</b>	<b>4</b>	<b>7</b>	<b>6</b>	<b>6</b>	<b>11</b>	<b>2</b>	<b>1</b>	<b>7</b>	<b>3</b>
M.F.A Art and Design	0	0	0	2	2	0	0	3	0	0	1	0
M.A. Art Administration							4	1	1	0	0	0
M.A. Art Education	2	1	1	1	0	0	1	1	0	0	0	1
M.M. Conducting	0	1	1	0	4	3	0	3	0	1	0	0
M.M.E. Music Education	0	0	0	0	0	1	0	2	1	0	0	2
M.M. Music Performance	1	1	0	1	1	2	1	1	0	0	6	0
<b>TOTAL</b>	<b>91</b>	<b>117</b>	<b>74</b>	<b>75</b>	<b>144</b>	<b>57</b>	<b>84</b>	<b>155</b>	<b>32</b>	<b>72</b>	<b>143</b>	<b>41</b>

**UNDERGRADUATE DEGREES CONFERRED  
BY DEGREE PROGRAM & SEMESTER  
2003 - 2007**

DEGREE PROGRAM	2003	2004	2004	2004	2005	2005	2005	2006	2006	2006	2007	2007
	FALL	SPR	SUM	FALL	SPR	SUM	FALL	SPR	SUM	FALL	SPR	SUM
<b>ARTS &amp; SCIENCES</b>	<b>120</b>	<b>219</b>	<b>32</b>	<b>131</b>	<b>234</b>	<b>35</b>	<b>145</b>	<b>280</b>	<b>30</b>	<b>120</b>	<b>269</b>	<b>31</b>
B.S. Biology	9	25	5	16	31	4	12	28	1	18	34	2
B.S. Chemistry	1	4	0	1	4	1	0	7	0		9	1
B.A. English	9	12	0	4	16	2	16	19	2	9	19	0
B.A. Environmental Science/Studies		2	1	2	1	1	1	3	1		2	1
B.S. Environmental Science				2	1	0	0	3	0	1	0	0
B.S. Human Nutrition	2	2	0	6	4	0	2	11	0	4	1	0
Certificate in Gerontology	3	2	0	0	1	0	1	1	0	1	3	1
B.S. Integrated Marketing Comm.	11	26	2	16	19	0	11	19	0	17	15	2
B.A. History	8	22	2	9	22	2	15	29	1	12	15	5
B.A. Mass Communication	11	15	3	11	23	1	10	21	3	12	26	2
B.A. Gen. Communication Disorders	3	11	1	4	11	3	4	16	1	2	14	1
B.A. Mathematics	1	6	0	2	2	0	2	5	0	1	2	0
B.S. Mathematics	2	4	0	0	2	0	1	3	0	0	2	1
B.S. Medical Technology	0	0	0	0	0	0	0		0	0	0	0
B.A. Modern Languages	2	5	0	6	6	1	3	9	2	0	9	2
B.A. Philosophy & Religion	0	6	0	0	2	1	1	5	2	0	10	0
B.A. Political Science	11	14	2	10	19	3	17	31	7	9	17	3
B.A. Psychology	23	33	6	17	36	3	23	38	3	16	55	10
B.S. Science Communication	0	2	0	0	1	0	0	0	0	0	0	0
B.S.W. Social Work	11	16	5	8	18	8	12	12	0	9	12	0
B.A. Sociology	13	12	5	17	15	5	14	20	7	9	24	0
<b>BUSINESS ADMINISTRATION</b>	<b>83</b>	<b>111</b>	<b>15</b>	<b>83</b>	<b>75</b>	<b>25</b>	<b>76</b>	<b>99</b>	<b>19</b>	<b>81</b>	<b>120</b>	<b>7</b>
B.S. Business Administration	77	105	15	78	69	22	69	92	18	78	110	5
B.A. Economics		1	0	1	2	2	0	1	0	2	4	1
B.S. Computer Science	6	5	0	4	4	1	7	6	1	1	6	1
B.S. Integrated Marketing										17	15	2
B.S. Sport Management	9	6	1	6	9	2	6	13	7	11	6	0
<b>EDUCATION</b>	<b>53</b>	<b>103</b>	<b>15</b>	<b>57</b>	<b>95</b>	<b>15</b>	<b>64</b>	<b>130</b>	<b>18</b>	<b>59</b>	<b>130</b>	<b>9</b>
B.S. Business Education												
B.S. Early Childhood Education	11	30	3	11	26	1	9	30	0	4	31	3
B.S. Elementary Education	14	39	5	14	29	2	25	31	0	11	37	1
B.S. Family Consumer Sciences	13	12	5	13	11	9	11	24	8	21	22	4
B.S. Middle Level Education											2	1
B.S. Physical Education	3	14	0	6	6	1	9	20	3	7	22	0
B.S. Special Education	3	2	1	7	14	0	4	12	0	5	10	0
B.S. Sport Management	9	6	1	6	9	2	6	13	7	11	6	0
<b>VISUAL &amp; PERFORMING ARTS</b>	<b>37</b>	<b>76</b>	<b>11</b>	<b>34</b>	<b>96</b>	<b>12</b>	<b>43</b>	<b>96</b>	<b>7</b>	<b>37</b>	<b>108</b>	<b>11</b>
B.A. Art	4	17	5	7	11	4	13	17	1	8	11	1
B.A. Art History	2	5	0	2	1	0	1	5	0	2	7	1
B.F.A. Art	22	25	3	14	36	5	14	41	4	13	42	3
B.A. Dance	1	9	0	4	6	0	6	10	0	5	10	0
B.A. Music	1	0	0	2	5	0	2	3	1	2	10	0
B.M.E. Music Education (Choral)	0	5	0	1	4	0	1	3	1	1	3	1
B.M.E. Music Education (Instrumental)	1	4	0	1	4	0	0	1	0		3	0
B.M. Music Performance	1	1	1	0	9	2	1	1	0	2	5	0
B.A. Theatre	5	10	2	3	20	1	5	15	0	4	17	5
<b>TOTAL</b>	<b>293</b>	<b>509</b>	<b>73</b>	<b>305</b>	<b>500</b>	<b>87</b>	<b>328</b>	<b>605</b>	<b>74</b>	<b>297</b>	<b>627</b>	<b>58</b>

# WINTHROP UNIVERSITY RETENTION & GRADUATION RATES

## ALL FULL-TIME FIRST-TIME FRESHMEN

Fall	#	Retention Rate after			%	Cumulative Graduation & Continuation Rate			
		1-Year	2-Year	3-Year	Grad.	Within 5 Years		Within 6 Years	
					4-Year	Graduated	Continued	Graduated	Continued
1997	909	75.2%	66.8%	61.4%	30.0%	50.2%	7.7%	54.9%	2.1%
1998	826	77.1%	67.4%	63.7%	31.5%	51.2%	6.7%	56.1%	2.5%
1999	965	77.8%	69.5%	65.2%	32.4%	54.7%	6.6%	59.7%	2.3%
2000	904	74.5%	67.0%	63.2%	32.4%	54.3%	5.4%	57.9%	1.8%
2001	940	74.3%	66.0%	62.3%	31.5%	54.1%	5.9%	60.7%	1.5%
2002	1086	77.6%	67.8%	63.1%	35.1%	55.9%	6.5%		
2003	1074	76.4%	66.4%	63.4%	36.9%				
2004	999	71.8%	62.5%	58.7%					
2005	1017	74.8%	65.8%						
2006	1180	71.7%							

**TOTAL FULL-TIME FACULTY HEADCOUNT  
FALL 2003 - FALL 2007**

COLLEGE/DEPARTMENT	Fall 2003	Fall 2004	Fall 2005	Fall 2006	Fall 2007
<b>ARTS &amp; SCIENCES</b>	<b>141</b>	<b>139</b>	<b>148</b>	<b>147</b>	<b>152</b>
Biology	14	14	15	16	16
Chemistry and Physics	14	16	15	16	17
English	24	23	24	23	24
History	11	10	10	10	8
Human Nutrition	7	7	7	6	6
Mass Communication	6	7	7	7	7
Mathematics	13	13	12	13	14
Modern and Classical Languages	8	5	6	8	9
Philosophy and Religious Studies	3	3	5	5	5
Political Science	10	10	9	8	8
Psychology	14	15	19	16	17
Social Work	7	6	7	8	10
Sociology	7	7	9	9	10
Speech	3	3	3	2	1
<b>BUSINESS ADMINISTRATION*</b>	<b>48</b>	<b>47</b>	<b>53</b>	<b>51</b>	<b>51</b>
Accounting, Finance & Economics	17	15	20	18	18
Computer Science & Quant. Methods	9	12	11	10	11
Management and Marketing	22	20	22	23	22
<b>EDUCATION*</b>	<b>51</b>	<b>52</b>	<b>48</b>	<b>56</b>	<b>54</b>
Center for Pedagogy	17	17	16	20	19
Counseling and Leadership**	7	7	0	0	
Curriculum and Instruction	17	17	21	25	24
Health and Physical Education	10	11	11	11	11
<b>VISUAL &amp; PERFORMING ARTS</b>	<b>51</b>	<b>47</b>	<b>51</b>	<b>50</b>	<b>54</b>
Fine Arts***	25	21	23	22	17
Design***					8
Music	16	17	17	18	18
Theatre and Dance	10	9	11	10	11
<b>LIBRARY</b>	<b>13</b>	<b>13</b>	<b>13</b>	<b>12</b>	<b>13</b>
<b>ACADEMIC AFFAIRS</b>	<b>1</b>	<b>1</b>	<b>1</b>	<b>1</b>	<b>1</b>
<b>TOTAL</b>	<b>305</b>	<b>299</b>	<b>314</b>	<b>317</b>	<b>325</b>

\* In the College of Education and the College of Business Administration, faculty have moved between departments during the 9-year period shown.

\*\* Became a part of Curriculum & Instruction

\*\*\* Formerly Art & Design; split in 2007 to become Fine Arts and Design.

**COMPARISON OF FALL 2006 AND FALL 2007  
TOTAL FULL-TIME FACULTY  
TENURED, DOCTORATE, AND TERMINAL DEGREE**

COLLEGE/DEPARTMENT	TENURED				TERMINAL DEGREE				DOCTORATE DEGREE			
	2006		2007		2006		2007		2006		2007	
	#	% OF FT	#	% OF FT	#	% OF FT	#	% OF FT	#	% OF FT	#	% OF FT
<b>ARTS &amp; SCIENCES</b>	<b>78</b>	<b>53.1%</b>	<b>83</b>	<b>54.6%</b>	<b>120</b>	<b>81.6%</b>	<b>129</b>	<b>84.9%</b>	<b>120</b>	<b>81.6%</b>	<b>128</b>	<b>84.2%</b>
Biology	9	56.3%	9	56.3%	14	87.5%	14	87.5%	14	87.5%	14	87.5%
Chemistry & Physics	7	43.8%	8	47.1%	15	93.8%	17	100.0%	15	93.8%	17	100.0%
English	12	52.2%	12	50.0%	16	69.6%	20	83.3%	16	69.6%	19	79.2%
History	8	80.0%	8	100.0%	10	100.0%	8	100.0%	10	100.0%	8	100.0%
Human Nutrition	3	50.0%	3	50.0%	3	50.0%	3	50.0%	3	50.0%	3	50.0%
Mass Communication	4	57.1%	4	57.1%	5	71.4%	5	71.4%	5	71.4%	5	71.4%
Mathematics	7	53.8%	8	57.1%	10	76.9%	12	85.7%	9	69.2%	11	78.6%
Modern & Classical Lang.	4	50.0%	4	44.4%	7	87.5%	8	88.9%	7	87.5%	8	88.9%
Phil. and Religious Studies	0	0.0%	2	40.0%	5	100.0%	5	100.0%	5	100.0%	5	100.0%
Political Science	5	62.5%	6	75.0%	8	100.0%	8	100.0%	8	100.0%	8	100.0%
Psychology	10	62.5%	11	64.7%	15	93.8%	16	94.1%	15	93.8%	16	94.1%
Social Work	4	50.0%	3	30.0%	5	62.5%	6	60.0%	6	75.0%	7	70.0%
Sociology	4	44.4%	5	50.0%	6	66.7%	7	70.0%	6	66.7%	7	70.0%
Speech	1	50.0%	0	0.0%	1	50.0%	0	0.0%	1	50.0%	0	0.0%
<b>BUSINESS ADMIN.</b>	<b>26</b>	<b>52.0%</b>	<b>22</b>	<b>43.1%</b>	<b>38</b>	<b>76.0%</b>	<b>38</b>	<b>74.5%</b>	<b>38</b>	<b>76.0%</b>	<b>39</b>	<b>76.5%</b>
Acc., Finance & Econ.	11	61.1%	7	38.9%	13	72.2%	12	66.7%	13	72.2%	12	66.7%
Comp. Sci. & Quant. Meth.	4	40.0%	4	36.4%	9	90.0%	10	90.9%	9	90.0%	10	90.9%
Management & Marketing	11	50.0%	11	50.0%	16	72.7%	16	72.7%	16	72.7%	17	77.3%
<b>EDUCATION</b>	<b>18</b>	<b>32.7%</b>	<b>20</b>	<b>37.0%</b>	<b>43</b>	<b>78.2%</b>	<b>44</b>	<b>81.5%</b>	<b>42</b>	<b>76.4%</b>	<b>44</b>	<b>81.5%</b>
Center for Pedagogy	8	42.1%	8	42.1%	18	94.7%	17	89.5%	17	89.5%	17	89.5%
Curriculum & Instruction	7	28.0%	6	25.0%	17	68.0%	18	75.0%	17	68.0%	18	75.0%
Health & Physical Edu.	3	27.3%	6	54.5%	8	72.7%	9	81.8%	8	72.7%	9	81.8%
<b>VISUAL &amp; PERF. ARTS</b>	<b>25</b>	<b>51.0%</b>	<b>24</b>	<b>44.4%</b>	<b>33</b>	<b>67.3%</b>	<b>36</b>	<b>66.7%</b>	<b>17</b>	<b>34.7%</b>	<b>18</b>	<b>33.3%</b>
Art & Design	12	54.5%	11	44.0%	13	59.1%	14	56.0%	3	13.6%	3	12.0%
Music	10	55.6%	9	50.0%	13	72.2%	13	72.2%	13	72.2%	13	72.2%
Theatre and Dance	3	33.3%	4	36.4%	7	77.8%	9	81.8%	1	11.1%	2	18.2%
<b>LIBRARY</b>	<b>8</b>	<b>66.7%</b>	<b>8</b>	<b>61.5%</b>	<b>2</b>	<b>16.7%</b>	<b>5</b>	<b>38.5%</b>	<b>1</b>	<b>8.3%</b>	<b>2</b>	<b>15.4%</b>
<b>OTHER</b>	<b>1</b>	<b>20.0%</b>	<b>1</b>	<b>50.0%</b>	<b>2</b>	<b>40.0%</b>	<b>1</b>	<b>50.0%</b>	<b>2</b>	<b>40.0%</b>	<b>1</b>	<b>50.0%</b>
<b>TOTAL</b>	<b>156</b>	<b>49.1%</b>	<b>158</b>	<b>48.5%</b>	<b>238</b>	<b>74.8%</b>	<b>253</b>	<b>77.6%</b>	<b>220</b>	<b>69.2%</b>	<b>232</b>	<b>71.2%</b>

VI-2 SOURCE: INSTITUTIONAL RESEARCH



**COMPARISON OF FALL 2006 AND FALL 2007  
FULL-TIME INSTRUCTIONAL FACULTY  
TENURED, DOCTORATE, AND TERMINAL DEGREE**

COLLEGE/DEPARTMENT	TENURED				TERMINAL DEGREE				DOCTORATE DEGREE			
	2006		2007		2006		2007		2006		2007	
	#	% OF FT Instr	#	% OF FT Instr	#	% OF FT Instr	#	% OF FT Instr	#	% OF FT Instr	#	% OF FT Instr
<b>ARTS &amp; SCIENCES</b>	<b>75</b>	<b>54.3%</b>	<b>79</b>	<b>55.2%</b>	<b>113</b>	<b>81.9%</b>	<b>121</b>	<b>84.6%</b>	<b>113</b>	<b>81.9%</b>	<b>120</b>	<b>83.9%</b>
Biology	9	60.0%	9	60.0%	14	93.3%	14	93.3%	14	93.3%	14	93.3%
Chemistry & Physics	7	46.7%	8	47.1%	15	100.0%	17	100.0%	15	100.0%	17	100.0%
English	10	47.6%	10	45.5%	14	66.7%	18	81.8%	14	66.7%	17	77.3%
History	8	80.0%	8	100.0%	10	100.0%	8	100.0%	10	100.0%	8	100.0%
Human Nutrition	3	50.0%	3	50.0%	3	50.0%	3	50.0%	3	50.0%	3	50.0%
Mass Communication	4	57.1%	4	57.1%	5	71.4%	5	71.4%	5	71.4%	5	71.4%
Mathematics	7	53.8%	8	57.1%	10	76.9%	12	85.7%	9	69.2%	11	78.6%
Modern & Classical Lang.	4	57.1%	4	50.0%	6	85.7%	7	87.5%	6	85.7%	7	87.5%
Phil. and Religious Studies	0	0.0%	2	40.0%	5	100.0%	5	100.0%	5	100.0%	5	100.0%
Political Science	5	62.5%	6	75.0%	8	100.0%	8	100.0%	8	100.0%	8	100.0%
Psychology	9	69.2%	10	71.4%	12	92.3%	13	92.9%	12	92.3%	13	92.9%
Social Work	4	50.0%	3	30.0%	5	62.5%	6	60.0%	6	75.0%	7	70.0%
Sociology	4	50.0%	4	50.0%	5	62.5%	5	62.5%	5	62.5%	5	62.5%
Speech	1	50.0%	0	0.0%	1	50.0%	0	0.0%	1	50.0%	0	0.0%
<b>BUSINESS ADMIN.</b>	<b>24</b>	<b>57.1%</b>	<b>20</b>	<b>47.6%</b>	<b>36</b>	<b>85.7%</b>	<b>36</b>	<b>85.7%</b>	<b>36</b>	<b>85.7%</b>	<b>36</b>	<b>85.7%</b>
Acc., Finance & Econ.	11	64.7%	7	41.2%	13	76.5%	12	70.6%	13	76.5%	12	70.6%
Comp. Sci. & Quant. Meth.	4	44.4%	4	40.0%	9	100.0%	10	100.0%	9	100.0%	10	100.0%
Management & Marketing	9	56.3%	9	60.0%	14	87.5%	14	93.3%	14	87.5%	14	93.3%
<b>EDUCATION</b>	<b>16</b>	<b>34.8%</b>	<b>18</b>	<b>38.3%</b>	<b>39</b>	<b>84.8%</b>	<b>40</b>	<b>85.1%</b>	<b>38</b>	<b>82.6%</b>	<b>40</b>	<b>85.1%</b>
Center for Pedagogy	7	43.8%	7	43.8%	16	100.0%	15	93.8%	15	93.8%	15	93.8%
Curriculum & Instruction	6	31.6%	5	25.0%	15	78.9%	16	80.0%	15	78.9%	16	80.0%
Health & Physical Edu.	3	27.3%	6	54.5%	8	72.7%	9	81.8%	8	72.7%	9	81.8%
<b>VISUAL &amp; PERF. ARTS</b>	<b>25</b>	<b>53.2%</b>	<b>23</b>	<b>46.0%</b>	<b>32</b>	<b>68.1%</b>	<b>33</b>	<b>66.0%</b>	<b>17</b>	<b>36.2%</b>	<b>17</b>	<b>34.0%</b>
Art & Design	12	57.1%	10	43.5%	12	57.1%	12	52.2%	3	14.3%	2	8.7%
Music	10	58.8%	9	52.9%	13	76.5%	13	76.5%	13	76.5%	13	76.5%
Theatre and Dance	3	33.3%	4	40.0%	7	77.8%	8	80.0%	1	11.1%	2	20.0%
<b>TOTAL</b>	<b>140</b>	<b>51.3%</b>	<b>140</b>	<b>49.6%</b>	<b>220</b>	<b>80.6%</b>	<b>230</b>	<b>81.6%</b>	<b>204</b>	<b>74.7%</b>	<b>213</b>	<b>75.5%</b>

VI-3 SOURCE: INSTITUTIONAL RESEARCH

**FULL-TIME INSTRUCTIONAL\* FACULTY  
BY RANK AND DEPARTMENT  
FALL 2004 - FALL 2007**

COLLEGE/DEPARTMENT	PROFESSOR				ASSOCIATE PROFESSOR				ASSISTANT PROFESSOR				INSTRUCTOR			
	2004	2005	2006	2007	2004	2005	2006	2007	2004	2005	2006	2007	2004	2005	2006	2007
<b>ARTS &amp; SCIENCES</b>	<b>35</b>	<b>38</b>	<b>35</b>	<b>34</b>	<b>39</b>	<b>41</b>	<b>39</b>	<b>45</b>	<b>37</b>	<b>37</b>	<b>42</b>	<b>41</b>	<b>20</b>	<b>19</b>	<b>22</b>	<b>23</b>
Biology	4	6	5	5	4	3	3	3	5	4	6	6	1	1	1	1
Chemistry & Physics	5	5	5	6	2	2	2	2	6	6	7	8	2	2	1	1
English	4	4	4	3	5	6	6	7	4	5	6	5	8	6	5	7
History	1	1	1	2	4	6	6	5	4	3	3	1	0	0	0	0
Human Nutrition	1	1	1	1	2	2	2	2	1	0	0	0	1	3	3	3
Mass Communication	1	1	1	1	3	3	3	3	1	2	2	2	2	1	1	1
Mathematics	4	4	5	5	1	2	1	2	5	3	4	5	3	3	3	2
Modern & Classical Lang.	1	1	3	3	3	3	2	2	0	0	0	0	1	1	2	3
Phil. and Religious Studies	1	1	0	0	0	0	0	2	2	4	5	3	0	0	0	0
Political Science	2	3	2	2	3	2	3	5	4	4	3	1	1	0	0	0
Psychology	3	3	2	2	7	7	7	8	3	4	3	3	0	0	1	1
Social Work	2	2	2	1	4	4	3	3	0	0	1	4	0	0	2	2
Sociology	5	5	4	3	0	0	0	1	2	2	2	3	0	1	2	1
Speech	1	1	0	0	1	1	1	0	0	0	0	0	1	1	1	1
<b>BUSINESS ADMIN.</b>	<b>10</b>	<b>13</b>	<b>13</b>	<b>12</b>	<b>21</b>	<b>20</b>	<b>19</b>	<b>20</b>	<b>5</b>	<b>9</b>	<b>10</b>	<b>8</b>	<b>0</b>	<b>1</b>	<b>0</b>	<b>2</b>
Acc., Finance & Econ.	3	5	6	5	12	11	10	10	0	1	1	1	0	0	0	1
Comp. Sci. & Quant. Method	3	3	3	3	4	4	4	5	2	2	2	2	0	1	0	0
Management & Marketing	4	5	4	4	5	5	5	5	3	6	7	5	0	0	0	1
<b>EDUCATION</b>	<b>10</b>	<b>9</b>	<b>7</b>	<b>6</b>	<b>8</b>	<b>10</b>	<b>11</b>	<b>14</b>	<b>19</b>	<b>21</b>	<b>21</b>	<b>20</b>	<b>4</b>	<b>8</b>	<b>7</b>	<b>7</b>
Center for Pedagogy	3	2	2	2	3	4	5	6	7	9	8	7	0	1	1	1
Counseling & Leadership***	2				0				1				0			
Curriculum & Instruction	3	5	3	2	3	4	5	5	7	6	7	9	2	6	4	4
Health & Physical Education	2	2	2	2	2	2	1	3	4	6	6	4	2	1	2	2
<b>VISUAL &amp; PERF. ARTS</b>	<b>15</b>	<b>15</b>	<b>13</b>	<b>11</b>	<b>10</b>	<b>14</b>	<b>16</b>	<b>15</b>	<b>16</b>	<b>11</b>	<b>17</b>	<b>21</b>	<b>4</b>	<b>4</b>	<b>1</b>	<b>3</b>
Fine Arst**	6	6	5	4	7	7	8	5	6	8	8	5	1	1	0	1
Design**				0				2				5				1
Music	8	8	7	6	2	3	4	4	4	1	5	6	3	3	1	1
Theatre and Dance	1	1	1	1	1	4	4	4	6	2	4	5	0	0	0	0
<b>LIBRARY</b>	<b>4</b>	<b>3</b>	<b>3</b>	<b>3</b>	<b>1</b>	<b>1</b>	<b>2</b>	<b>4</b>	<b>6</b>	<b>6</b>	<b>4</b>	<b>4</b>	<b>1</b>	<b>1</b>	<b>1</b>	<b>0</b>
<b>TOTAL</b>	<b>74</b>	<b>78</b>	<b>71</b>	<b>66</b>	<b>79</b>	<b>86</b>	<b>87</b>	<b>98</b>	<b>83</b>	<b>84</b>	<b>94</b>	<b>94</b>	<b>29</b>	<b>33</b>	<b>31</b>	<b>35</b>

\* Includes Library.

\*\*Formerly combined as Art &amp; Design; separated into Fine Arts and Design in 2007

\*\*\*Joined with Curriculum &amp; Instruction

**FULL-TIME INSTRUCTIONAL\* FACULTY HEADCOUNT  
BY GENDER AND DEPARTMENT  
FALL 2005 - FALL 2007**

COLLEGE/DEPARTMENT	MALE			FEMALE		
	2005	2006	2007	2005	2006	2007
<b>ARTS &amp; SCIENCES</b>	<b>74</b>	<b>70</b>	<b>72</b>	<b>61</b>	<b>68</b>	<b>71</b>
Biology	7	7	7	7	8	8
Chemistry & Physics	8	8	10	7	7	7
English	6	6	6	15	15	16
History	8	8	6	2	2	2
Human Nutrition	2	2	2	4	4	4
Mass Communication	5	5	5	2	2	2
Mathematics	7	8	8	5	5	6
Modern & Classical Lang.	2	3	4	3	4	4
Phil. and Religious Studies	4	4	4	1	1	1
Political Science	7	6	6	2	2	2
Psychology	9	7	8	5	6	6
Social Work	3	2	2	3	6	8
Sociology	5	4	4	3	4	4
Speech	1	0	0	2	2	1
<b>BUSINESS ADMIN.</b>	<b>31</b>	<b>30</b>	<b>29</b>	<b>12</b>	<b>12</b>	<b>13</b>
Acc., Finance & Econ.	15	15	14	2	2	3
Comp. Sci. & Quant. Method	7	6	7	3	3	3
Management & Marketing	9	9	8	7	7	7
<b>EDUCATION</b>	<b>14</b>	<b>12</b>	<b>13</b>	<b>34</b>	<b>34</b>	<b>34</b>
Center for Pedagogy	6	6	6	10	10	10
Curriculum & Instruction	5	4	5	16	15	15
Health & Physical Education	3	2	2	8	9	9
<b>VISUAL &amp; PERF. ARTS</b>	<b>25</b>	<b>27</b>	<b>29</b>	<b>19</b>	<b>20</b>	<b>21</b>
Fine Arts**	14	13	9	8	8	6
Design**			5			3
Music	10	11	11	5	6	6
Theatre and Dance	1	3	4	6	6	6
<b>LIBRARY</b>	<b>2</b>	<b>2</b>	<b>3</b>	<b>9</b>	<b>8</b>	<b>8</b>
<b>TOTAL</b>	<b>146</b>	<b>141</b>	<b>146</b>	<b>135</b>	<b>142</b>	<b>147</b>

\* Includes Library.

\*\*Formerly Art & Design; split in 2007 to become Fine Arts and Design.

**FULL-TIME INSTRUCTIONAL\* FACULTY  
BY DEPARTMENT  
FALL 2003 - FALL 2007**

COLLEGE/DEPARTMENT	Fall 2003		Fall 2004		Fall 2005		Fall 2006		Fall 2007	
	#	TT	#	TT	#	TT	#	TT	#	TT
<b>ARTS &amp; SCIENCES</b>	<b>135</b>	<b>114</b>	<b>132</b>	<b>108</b>	<b>135</b>	<b>112</b>	<b>137</b>	<b>110</b>	<b>143</b>	<b>116</b>
Biology	14	13	14	13	14	13	15	13	15	13
Chemistry and Physics	14	13	15	11	15	11	15	11	17	13
English	23	14	21	14	21	15	21	16	22	15
History	10	9	9	8	10	10	10	10	8	8
Human Nutrition	6	4	6	4	6	3	6	3	6	3
Mass Communication	6	5	7	5	7	6	7	6	7	6
Mathematics	13	11	13	10	12	9	13	9	14	12
Modern and Classical Languages	8	6	5	4	5	4	7	5	8	5
Philosophy and Religious Studies	3	3	3	3	5	4	5	4	5	5
Political Science	10	9	10	9	9	9	8	8	8	8
Psychology	12	12	13	13	14	14	13	12	14	13
Social Work	6	6	6	5	6	5	8	6	10	8
Sociology	7	7	7	7	8	7	8	6	8	7
Speech	3	2	3	2	3	2	1	1	1	0
<b>BUSINESS ADMINISTRATION**</b>	<b>39</b>	<b>33</b>	<b>36</b>	<b>29</b>	<b>43</b>	<b>36</b>	<b>42</b>	<b>37</b>	<b>42</b>	<b>36</b>
Accounting, Finance, & Economics	17	16	15	12	17	13	17	14	17	12
Computer Science & Quant. Meth.	8	7	9	8	10	9	9	9	10	10
Management and Marketing	14	10	12	9	16	14	16	14	15	14
<b>EDUCATION**</b>	<b>42</b>	<b>36</b>	<b>42</b>	<b>34</b>	<b>48</b>	<b>36</b>	<b>46</b>	<b>33</b>	<b>47</b>	<b>38</b>
Center for Pedagogy	12	12	13	13	16	15	16	15	16	15
Counseling and Leadership	5	5	3	3						
Curriculum and Instruction	16	13	16	12	21	13	19	11	20	15
Health and Physical Education	9	6	10	6	11	8	11	7	11	8
<b>VISUAL &amp; PERFORMING ARTS</b>	<b>48</b>	<b>36</b>	<b>45</b>	<b>34</b>	<b>44</b>	<b>38</b>	<b>47</b>	<b>40</b>	<b>50</b>	<b>44</b>
Fine Arts***	23	18	20	16	22	20	21	19	15	12
Design***									8	7
Music	16	14	17	14	15	12	17	14	17	16
Theatre and Dance	9	4	8	4	7	6	9	7	10	9
<b>LIBRARY</b>	<b>13</b>	<b>9</b>	<b>13</b>	<b>9</b>	<b>13</b>	<b>11</b>	<b>11</b>	<b>10</b>	<b>11</b>	<b>10</b>
<b>TOTAL</b>	<b>277</b>	<b>228</b>	<b>268</b>	<b>214</b>	<b>283</b>	<b>233</b>	<b>283</b>	<b>230</b>	<b>293</b>	<b>244</b>

\* Includes Library.

\*\* In the College of Education and the College of Business Administration, faculty have moved between departments during the 5-year period shown. Counseling now part of Curriculum & Instruction.

\*\*\*Formerly Art & Design; split in Fall 2007 to become Design and Fine Arts

Notes: # is headcount employed as of October 1; TT is number tenured or holding tenure track appointment.

Faculty on leave without pay are not counted;

**PART-TIME INSTRUCTIONAL FACULTY AND FTE  
BY DEPARTMENT  
FALL 2003 - FALL 2007**

COLLEGE/DEPARTMENT	FALL 2003		FALL 2004		FALL 2005		FALL 2006		FALL 2007		DIFF 03-07	
	#	FTE	#	FTE	#	FTE	#	FTE	#	FTE	#	FTE
<b>ARTS &amp; SCIENCES</b>	<b>72</b>	<b>36.45</b>	<b>98</b>	<b>49.71</b>	<b>94.00</b>	<b>55.78</b>	<b>103.00</b>	<b>56.71</b>	<b>103.00</b>	<b>57.94</b>	<b>31.00</b>	<b>21.49</b>
Biology	6	2.91	12	6.47	13	7.14	13	6.81	12	6.14	6.00	3.23
Chemistry and Physics	5	1.66	4	1.66	5	2.32	8	3.40	8	4.07	3.00	2.41
English	17	10.54	20	11.70	13	10.71	17	11.29	17	10.71	0.00	0.17
History	3	1.00	5	1.74	4	1.74	4	1.58	5	2.16	2.00	1.16
Human Nutrition	3	1.08	6	1.91	7	2.24	8	3.57	8	3.90	5.00	2.82
Mass Communication	2	0.50	1	0.50	2	0.50	1	0.50	2	0.75	0.00	0.25
Mathematics	4	2.49	4	2.24	4	2.99	3	1.49	4	2.99	0.00	0.50
Modern and Classical Languages	15	9.63	21	13.78	21	16.85	19	14.70	16	12.20	1.00	2.57
Philosophy and Religious Studies	1	0.25	1	0.25	0	0.00	1	0.25	0	0.00	-1.00	-0.25
Political Science	3	0.58	5	1.74	5	2.24	4	1.41	4	1.49	1.00	0.91
Psychology	7	3.24	11	4.48	12	5.48	12	5.98	11	6.81	4.00	3.57
Social Work	1	0.25	0	0.00	1	0.25	5	1.49	4	1.49	3.00	1.24
Sociology	5	2.32	8	3.24	7	3.32	7	3.49	10	4.23	5.00	1.91
Speech	0	0.00	0	0.00	0	0.00	1	0.75	2	1.00	2.00	1.00
<b>BUSINESS ADMINISTRATION*</b>	<b>13</b>	<b>4.23</b>	<b>10</b>	<b>4.07</b>	<b>9.00</b>	<b>2.75</b>	<b>13.00</b>	<b>5.48</b>	<b>14.00</b>	<b>8.47</b>	<b>1.00</b>	<b>4.24</b>
Accounting, Finance & Econ.	5	1.74	5	1.99	3	1.25	5	2.74	5	2.74	0.00	1.00
Computer Sci. & Quan. Meth.	1	0.50	1	0.25	1	0.25	0	0.00	0	0.00	-1.00	-0.50
Management and Marketing	7	1.99	4	1.83	5	1.25	8	2.74	9	5.73	2.00	3.74
<b>EDUCATION*</b>	<b>63</b>	<b>18.76</b>	<b>44</b>	<b>12.53</b>	<b>44.00</b>	<b>14.03</b>	<b>50.00</b>	<b>20.50</b>	<b>65.00</b>	<b>46.73</b>	<b>2.00</b>	<b>27.97</b>
Center for Pedagogy	9	3.74	8	2.49	9	4.65	10	7.80	13	4.90	4.00	1.16
Counseling and Leadership	0	0.00	4	2.24	0	0.00	0	0.00	0	0.00	0.00	0.00
Curriculum and Instruction	4	1.91	4	1.00	25	7.14	6	1.91	9	6.64	5.00	4.73
Health and Physical Education	17	3.07	15	2.57	10	2.24	15	5.06	18	7.47	1.00	4.40
Professional Development	33	10.04	13	4.23			19	5.73	25	27.72	-8.00	17.68
<b>VISUAL &amp; PERFORMING ARTS</b>	<b>49</b>	<b>29.30</b>	<b>57</b>	<b>34.62</b>	<b>74.00</b>	<b>37.93</b>	<b>72.00</b>	<b>40.84</b>	<b>70.00</b>	<b>41.50</b>	<b>21.00</b>	<b>12.20</b>
Art and Design	21	12.20	28	15.44	33	15.27	31	14.86			-21.00	-12.20
Fine Arts***									27	11.87	27.00	11.87
Design***									6	4.48	6.00	4.48
Music	18	12.62	19	15.69	25	16.68	28	21.00	23	19.26	5.00	6.64
Theatre and Dance	10	4.48	10	3.49	16	5.98	13	4.98	14	5.89	4.00	1.41
ACAD 101**	25	2.57	21	3.24	7	1.16	24	3.82	23	2.91	-2.00	0.34
<b>PART-TIME TOTAL</b>	<b>222</b>	<b>113.74</b>	<b>230</b>	<b>104.17</b>	<b>228</b>	<b>111.65</b>	<b>262</b>	<b>127.35</b>	<b>275</b>	<b>157.55</b>	<b>53.00</b>	<b>43.81</b>

\* In the College of Education and the College of Business Administration, faculty have moved between departments during the 5-year period shown.

Notes: # is headcount employed as of October 1; FTE is teaching FTE only.

\*\* In fall 2003, CISM program was changed, and renamed ACAD

\*\*\*Art & Design split in 2007 Fall

**FULL-TIME INSTRUCTIONAL FACULTY  
BY DEPARTMENT, RACE AND GENDER  
FALL 2007**

COLLEGE/DEPARTMENT	AFRICAN AMERICAN			AMERICAN INDIAN/NATIVE ALASKAN			ASIAN/PACIFIC ISLANDER			HISPANIC			WHITE			TOTAL		
	Male	Female	Total	Male	Female	Total	Male	Female	Total	Male	Female	Total	Male	Female	Total	Male	Female	Total
<b>ARTS &amp; SCIENCES</b>	2	5	7	0	0	0	2	3	5	3	3	6	65	60	125	72	71	143
Biology	0	0	0	0	0	0	1	0	1	0	0	0	6	8	14			0
Chemistry & Physics	1	1	2	0	0	0	1	0	1	0	0	0	8	6	14			0
English	0	1	1	0	0	0	0	0	0	0	0	0	6	15	21			0
History	0	0	0	0	0	0	0	0	0	0	0	0	6	2	8			0
Human Nutrition	0	0	0	0	0	0	0	0	0	0	0	0	2	4	6			0
Mass Communication	0	0	0	0	0	0	0	0	1	1	0	0	5	1	6			0
Mathematics	0	0	0	0	0	0	0	1	1	1	1	2	7	4	11			0
Modern & Classical Lang.	0	0	0	0	0	0	0	1	1	1	2	3	3	1	4			0
Phil. and Religious Studies	0	0	0	0	0	0	0	0	0	0	0	0	4	1	5			0
Political Science	1	0	1	0	0	0	0	0	0	0	0	0	5	2	7			0
Psychology	0	1	1	0	0	0	0	0	0	0	0	0	8	5	13			0
Social Work	0	2	2	0	0	0	0	0	0	0	0	0	2	6	8			0
Sociology	0	0	0	0	0	0	0	0	0	1	0	1	3	4	7			0
Speech	0	0	0	0	0	0	0	0	0	0	0	0	0	1	1			0
<b>BUSINESS ADMIN.</b>	2	2	4	0	0	0	5	0	5	0	0	0	22	11	33	29	13	42
Acc., Finance & Econ.	2	0	2	0	0	0	2	0	2	0	0	0	10	3	13	14	3	17
Comp. Sci. & Quant. Method	0	1	1	0	0	0	2	0	2	0	0	0	5	2	7	7	3	10
Management & Marketing	0	1	1	0	0	0	1	0	1	0	0	0	7	6	13	8	7	15
<b>EDUCATION</b>	1	4	5	0	0	0	0	0	0	1	0	1	11	29	40	13	33	46
Center for Pedagogy	0	1	1	0	0	0	0	0	0	1	0	1	5	9	14	6	10	16
Curriculum & Instruction*	1	3	4	0	0	0	0	0	0	0	0	0	4	11	15	5	14	19
Health & Physical Education	0	0	0	0	0	0	0	0	0	0	0	0	2	9	11	2	9	11
<b>VISUAL &amp; PERF. ARTS</b>	0	0	0	0	0	0	0	1	1	0	0	0	29	20	49	29	21	50
Fine Arts	0	0	0	0	0	0	0	0	0	0	0	0	9	6	15	9	6	15
Design	0	0	0	0	0	0	0	0	0	0	0	0	5	3	8	5	3	8
Music	0	0	0	0	0	0	0	1	1	0	0	0	11	5	16	11	6	17
Theatre and Dance	0	0	0	0	0	0	0	0	0	0	0	0	4	6	10	4	6	10
<b>TOTAL</b>	<b>5</b>	<b>11</b>	<b>16</b>	<b>0</b>	<b>0</b>	<b>0</b>	<b>7</b>	<b>4</b>	<b>11</b>	<b>4</b>	<b>3</b>	<b>7</b>	<b>127</b>	<b>120</b>	<b>247</b>	<b>143</b>	<b>138</b>	<b>281</b>

\* 1 International/Non-resident Alien (1female)

## STATEMENT OF REVENUES, EXPENSES AND ASSETS

	<u>2004-05</u>	<u>2005-06</u>	<u>2006-07</u>
<b>REVENUES</b>			
<u>Operating Revenues</u>			
Tuition and Fees	\$29,397,363	\$32,314,186	\$35,324,518
Federal Grants and Contracts	\$5,548,926	\$6,226,575	\$6,658,624
State Grants and Contracts	\$12,532,472	\$12,761,368	\$13,226,485
Local/Private Grants and Contracts	\$69,085	\$84,479	\$244,093
Sales and Services of Auxiliary Enterprises	\$10,028,862	\$10,453,478	\$11,629,416
Other Sources	\$3,355,811	\$3,686,945	\$4,355,643
Total Operating Revenues	\$60,932,519	\$65,527,031	\$71,438,779
<u>Nonoperating Revenues</u>			
State Appropriations	\$21,158,536	\$21,814,659	\$23,941,590
State Nonoperating Grants	\$18,346	\$18,133	\$18,132
Local Nonoperating Grants	\$110,346	\$100,848	\$3,985
Gifts	\$1,327,895	\$1,617,050	\$3,311,938
Investment Income	\$328,378	\$856,228	\$1,807,427
Other Nonoperating Revenues	\$886,887	\$857,171	\$954,421
Total Nonoperating Revenues	\$23,830,388	\$25,264,089	\$30,037,493
<u>Other Revenues &amp; Additions</u>			
Capital Appropriations	\$4,899,848	\$1,542,667	\$1,623,035
<b>Total All Revenues &amp; Additions</b>	<b>\$89,662,755</b>	<b>\$92,333,787</b>	<b>\$103,099,307</b>
<b>EXPENSES</b>			
<u>Operating Expenses</u>			
Instruction	\$27,681,971	\$29,673,318	\$31,120,077
Research	\$395,276	\$1,177,907	\$1,185,870
Public Service	\$3,639,273	\$3,754,660	\$3,401,476
Academic Support	\$7,163,042	\$6,727,349	\$7,312,366
Student Services	\$8,827,092	\$9,806,794	\$10,680,793
Institutional Support	\$6,519,112	\$7,403,126	\$7,602,734
Plant Operation & Maintenance	\$12,199,781	\$12,109,830	\$12,994,112
Depreciation	\$3,612,153	\$3,710,490	\$3,753,352
Scholarships & Fellowships	\$4,811,850	\$4,923,261	\$5,198,389
Auxiliary Expenses	\$7,714,975	\$8,374,134	\$8,743,401
Total Operating Expenses	\$82,564,525	\$87,660,869	\$91,992,570
<u>Non-Operating Expenses</u>			
Interest Expense	\$1,127,283	\$1,559,833	\$1,622,606
Other Non-Operating Expense	\$46,445	\$215,247	\$27,434
Total Non-Operating Expenses	\$1,173,728	\$1,775,080	\$1,650,040
<b>Total All Expenses</b>	<b>\$83,738,253</b>	<b>\$89,435,949</b>	<b>\$93,642,610</b>
<b>NET ASSETS</b>			
Total Assets	\$104,582,284	\$129,313,218	\$137,077,522
Total Liabilities	\$40,781,873	\$62,614,969	\$60,922,576
Total Net Assets	\$63,800,012	\$66,698,249	\$76,154,946

## ACADEMIC YEAR STUDENT FEES 1998-2007

<b>STUDENT FEES</b>	<b>1998-99</b>	<b>1999-00</b>	<b>2000-01</b>	<b>2001-02</b>	<b>2002-03</b>	<b>2003-04</b>	<b>2004-05</b>	<b>2005-06</b>	<b>2006-07</b>	<b>2007-08</b>
<b>TUITION</b>										
In-State	4,032	4,126	4,262	4,668	5,600	6,652	7,816	8,756	9,500	10,210
% Difference	2.9%	2.3%	3.3%	9.5%	20.0%	18.8%	17.5%	12.0%	8.5%	7.5%
<b>Out-of-State</b>	<b>7,250</b>	<b>7,434</b>	<b>7,680</b>	<b>8,756</b>	<b>10,310</b>	<b>12,258</b>	<b>14,410</b>	<b>16,150</b>	<b>17,564</b>	<b>19,034</b>
% Difference	2.9%	2.5%	3.3%	14.0%	17.7%	18.9%	17.6%	12.1%	8.8%	8.4%
<b>ROOM &amp; BOARD</b>										
Room	2,360	2,420	2,500	2,592	2,670	2,770	3,060	3,420	3,560	3,780
% Difference	4.4%	2.5%	3.3%	3.7%	3.0%	3.7%	10.5%	11.8%	4.1%	6.2%
<b>Board</b>	<b>1,544</b>	<b>1,602</b>	<b>1,656</b>	<b>1,746</b>	<b>1,800</b>	<b>1,860</b>	<b>1,932</b>	<b>1,932</b>	<b>2,010</b>	<b>2,130</b>
% Difference	2.7%	3.8%	3.4%	5.4%	3.1%	3.3%	3.9%	0.0%	4.0%	6.0%
<b>TOTAL FEES</b>										
<b>In-State</b>	<b>7,936</b>	<b>8,148</b>	<b>8,418</b>	<b>9,006</b>	<b>10,070</b>	<b>11,282</b>	<b>12,808</b>	<b>14,108</b>	<b>15,070</b>	<b>16,120</b>
% Difference	3.3%	2.7%	3.3%	7.0%	11.8%	12.0%	13.5%	10.1%	6.8%	7.0%
<b>Out-of-State</b>	<b>11,154</b>	<b>11,456</b>	<b>11,836</b>	<b>13,094</b>	<b>14,780</b>	<b>16,888</b>	<b>19,402</b>	<b>21,502</b>	<b>23,134</b>	<b>24,944</b>
% Difference	3.2%	2.7%	3.3%	10.6%	12.9%	14.3%	14.9%	10.8%	7.6%	7.8%

Note: % Difference is the percent change from the previous year to the current year.





**WINTHROP UNIVERSITY LIBRARY STATISTICS  
2000 - 2006**

DESCRIPTION	2000-01	2001-02	2002-03	2003-04	2004-05	2005-06	2006-07
<b>LIBRARY STAFF</b>	31.00	31.00	31.00	31.00	31.00	31.00	31.00
Professional Librarians	14	14	14	14	14	14	13
Para-Professionals	16.00	16.00	16.00	16.00	16.00	16.00	17.00
Clericals	1.00	1.00	1.00	1.00	1.00	1.00	1.00
<b>HOLDINGS</b>							
Volumes in Book Stock	422,725	424,681	414,871	419,244	421,505	419,244	425,648
Shelving Capacity (Volumes)	400,000	400,000	400,000	400,000	400,000	400,000	400,000
U.S. Government Documents	0***	0***	0***	0***	0***	0***	0***
Units of Microtext	1,191,255	1,209,273	1,236,619	1,242,545	1,247,774	1,242,545	1,249,379
Audio Recordings (Discs & Cassettes)	1,634	1,664	1,739	1,739	1,756	1,739	1,778
Maps	2,540	2,620	2,675	2,733	2,763	2,733	2,824
CD-ROM Titles	231	256	282	294	310	294	322
Total Bound Periodicals & Serials	72,680	70,523	56,183	70,268	70,268	70,268	69,917
Total Current Subscription Serial Titles Regularly Received	1,754	1,600	1,446	1,729	1,421	1,729	1,545
Archives (Approximate Piece Count)	2,672,159	2,746,777	2,893,465	2,964,747	3,102,566	2,964,747	3,155,716
<b>TOTAL OPERATING EXPENDITURES</b>	\$2,169,201	\$2,174,908	\$2,359,729	\$2,424,034	\$2,683,011	\$2,424,034	\$2,818,003
<b>STUDENTS</b>							
Student Headcount Enrollment (Fall)	6,062	6,306	6,462	6,558	6,447	6,558	6,292
Expenditures per Student	\$358	\$345	\$365	\$370	\$416	\$370	\$448
Volumes in Book Stock per Student	70	67	64	64	65	64	68
Students per Library Staff Member	196	203	208	212	208	212	203
Students per Librarian	433	450	462	468	461	468	484

\*\*\* U.S. Government Documents are now included in the total volume count

# The Center for Career Development and Service Learning

## NUMBER OF CO-OPS

SCHOOL/COLLEGE	2001-02	2002-03	2003-04	2004-05	2005-06	2006-07
ARTS & SCIENCES	22	23	26	11	28	19
BUSINESS ADMINISTRATION	22	29	29	11	4	4
EDUCATION	38	28	46	48	74	67
VISUAL & PERFORMING ARTS	36	36	31	44	28	42
<b>TOTAL</b>	<b>118</b>	<b>116</b>	<b>132</b>	<b>114</b>	<b>134</b>	<b>132</b>

## NUMBER OF CO-OP EMPLOYERS

YEAR	A&S	Business	Education	VPA	Any Major	Total
2006-07	31	4	58	40		133
2005-06	18	3	60	24	5	93
2004-05	10	10	21	18	0	59
2003-04	25	29	40	28	8	130
2002-03	20	23	10	12	16	81
2001-02	20	20	29	32		101
<b>TOTAL</b>	<b>110</b>	<b>141</b>	<b>114</b>	<b>117</b>	<b>24</b>	<b>565</b>

## CO-OP CREDIT HOURS

	A&S	Business	Education	VPA	Total
<b>2006-07</b>					
# of Students	17	2	67	41	127
Credit Hours Earned	34.5	4	143	123	304.5
Tuition (\$396 avg./credit hour)	\$13,662	\$1,584	\$56,628	\$48,708	\$120,582
<b>2005-06</b>					
# of Students	15	3	72	26	116
Credit Hours Earned	31	9	146	81	267
Tuition (\$375 avg./credit hour)	\$11,315	\$3,375	\$54,750	\$30,375	\$99,815.00
<b>2004-05</b>					
# of Students	9	5	55	31	100
Credit Hours Earned	19	13	135.5	90	257.5
Tuition (\$203 avg./credit hour)	\$6,213	\$4,251	\$44,309	\$29,448	\$84,221
<b>2003-04</b>					
# of Students	14	17	47	29	107
Credit Hours Earned	31	37	136.5	85	289.5
Tuition (\$203 avg./credit hour)	\$8,587	\$10,249	\$37,811	\$23,545	\$80,192
<b>2002-03</b>					
# of Students	12	8	27	35	82
Credit Hours Earned	22	18	81	105	226
Tuition (\$203 avg./credit hour)	\$4,466	\$3,654	\$16,443	\$21,306	\$45,869
<b>2001-02</b>					
# of Students	32	11	35	16	94
Credit Hours Earned	81	25	105	48	259
Tuition (\$192 avg./credit hour)	\$14,992	\$4,969	\$19,854	\$9,576	\$49,391

## Part-time Job Listings

	2001-02	2002-03	2003-04	2004-05	2005-06	2006-07
<b>Total Employers</b>	<b>246</b>	<b>93</b>	<b>175</b>	<b>426</b>	<b>113</b>	<b>105</b>
First-Time Employers	98	45	128	281	51	60
Repeat Employers	148	48	47	145	62	45
# of Jobs Posted	424	182	312	727	276	181
# of Students Placed	\$ 32.00	\$61	\$74	\$120	\$78	\$58
Total Earnings*	\$154,105	\$290,378	\$121,185	\$264,600	\$211,809	\$178,924
Yearly Avg. Earned per Student	\$4,816.00	\$4,760.00	\$1,638.00	\$2,205.00	\$2,715.00	\$3,084.90
Avg. Hourly Wage per Student	\$7.61	\$7.76	\$7.46	\$7.50	\$7.75	\$7.91
Avg. Hrs. Worked per Week per Stu.		15.54	13.4	14	14	15

\*Estimated earnings based on average hours worked and money earned per week for each student placed.

Note: Students no longer register with open board system

## JOB LISTINGS POSTED AT CAREER SERVICES

YEAR	# General Job Listings	# of Co-op Listings	# Part-time Job listings	# EagleTrak	On Campus Recruiters
2006-07		162	181	1,925	8
2005-06		94	250	1621	9
2004-05		146	727	4164	18
2003-04	17,847	81	128	1446	8
2002-03	19,938	93	182	333	12
2001-02	20,412	102	424	68	21
2000-01	35,402	87	653	182	28
<b>TOTAL</b>	<b>136,608</b>	<b>637</b>	<b>2,774</b>	<b>6,535</b>	<b>111</b>

**WINTHROP UNIVERSITY ACTIVE ALUMNI**  
**By County and State of Residence**  
**As of November 26, 2007**

S.C. COUNTY OF RESIDENCE	NUMBER OF ACTIVE ALUMNI
Abbeville	81
Aiken	451
Allendale	26
Anderson	618
Bamberg	49
Barnwell	77
Beaufort	327
Berkeley	355
Calhoun	70
Charleston	1,615
Cherokee	388
Chester	742
Chesterfield	333
Clarendon	104
Colleton	140
Darlington	327
Dillon	140
Dorchester	399
Edgefield	96
Fairfield	161
Florence	713
Georgetown	281
Greenville	2,335
Greenwood	291
Hampton	74
Horry	686
Jasper	20
Kershaw	403
Lancaster	916
Laurens	309
Lee	66
Lexington	1,355
Marion	127
Marlboro	113
McCormick	29
Newberry	226
Oconee	280
Orangeburg	366
Pickens	490
Richland	1,962
Saluda	54
Spartanburg	1,352
Sumter	449
Union	242
Williamsburg	106
York	7,717
<b>TOTAL</b>	<b>27,461</b>

STATE OF RESIDENCE	NUMBER OF ACTIVE ALUMNI
Alabama	205
Alaska	13
Arizona	77
Arkansas	30
California	294
Colorado	102
Connecticut	53
Delaware	38
District of Columbia	37
Florida	1,007
Georgia	1,701
Hawaii	17
Idaho	7
Illinois	131
Indiana	64
Iowa	26
Kansas	30
Kentucky	93
Louisiana	65
Maine	21
Maryland	337
Massachusetts	69
Michigan	91
Minnesota	34
Mississippi	49
Missouri	70
Montana	15
Nebraska	17
Nevada	21
New Hampshire	16
New Jersey	156
New Mexico	27
New York	249
North Carolina	6,256
North Dakota	4
Ohio	208
Oklahoma	38
Oregon	42
Pennsylvania	196
Rhode Island	17
South Carolina	27,461
South Dakota	5
Tennessee	408
Texas	363
Utah	15
Vermont	10
Virginia	812
Washington	69
West Virginia	40
Wisconsin	41
Wyoming	4
Foreign	515
Other (Military Addresses)	20
Puerto Rico	3
Virgin Islands	5
<b>TOTAL</b>	<b>41,694</b>